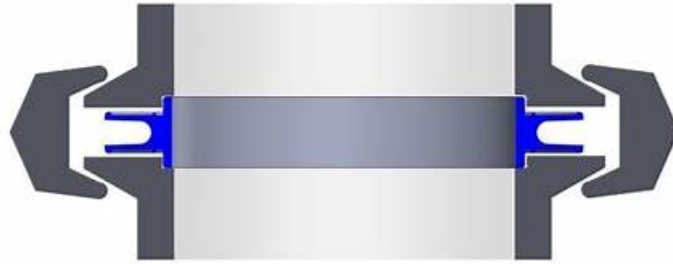


C_ADBTP_2601技術内容 & C_ADBTP_2601参考資料



C_ADBTP_2601実践ガイドまたはシステムの内容が更新された場合、更新された情報を電子メールアドレスに送信します。もちろん、製品の更新状況については、当社の電子メールをご覧ください。C_ADBTP_2601模擬試験を使用してC_ADBTP_2601試験に合格するように協力できることを願っています。コンテンツの更新に加えて、C_ADBTP_2601トレーニング資料のシステムも更新されます。ご意見がありましたら、私たちの共通の目標は、ユーザーが満足する製品を作成することであると言えます。学習を開始した後、メールをチェックするための固定時間を設定できることを願っています。

我々社のチームは顧客のすべてのために、改革政策に伴って最新版の信頼できるSAPのC_ADBTP_2601をリリースされて喜んでます。我々社はC_ADBTP_2601問題集のクオリティをずっと信じられますから、試験に失敗するとの全額返金を承諾します。また、受験生の皆様は一発的に試験に合格できると信じます。もし運が良くないとき、失敗したら、お金を返してあなたの経済損失を減らします。

>> C_ADBTP_2601技術内容 <<

SAP C_ADBTP_2601参考資料 & C_ADBTP_2601最新試験

すべての働く人は、C_ADBTP_2601がこの分野で支配的な人物であり、また彼らのキャリアに役立つことを知っています。C_ADBTP_2601信頼性の高い試験ブートキャンプが試験に合格し、資格証明書を取得するのに役立つ場合、より良いキャリア、より良い人生を得ることができます。私たちの研究C_ADBTP_2601ガイド資料は、最新のC_ADBTP_2601テストの質問と回答のほとんどを網羅しています。確かにこの分野で何か違うことをしようと決心しているなら、役に立つ認定はあなたのキャリアの足がかりになるでしょう。

SAP Administrating SAP Business Technology Platform(C_ADBTP_2601) 認定 C_ADBTP_2601 試験問題 (Q10-Q15):

質問 #10

SIMULATION

Enable a Cloud Foundry Environment

Task 2: Enable and Configure a Cloud Foundry Environment

In your SAP BTP cockpit, in the EU HCM Dev subaccount, enable the Cloud Foundry environment in the cf-eu10-004 landscape.

Set the instance name to cf-eu-hcm-dev and the org name to btrops####-eu-hcm-dev.

In the EU HCM Dev subaccount, create a space with the name activity-recording.

In the EU HCM Dev subaccount, create a space quota with the name half-org-quot a. Halve the available org quota for memory, routes, service, and instance memory for an unlimited number of app instances. Assign the space quota to activity-recording.

正解:

解説:

See the Explanation below for complete solution.

Explanation:

Before you start

Log in to SAP BTP Cockpit.

Open the correct Global Account.

Go to Directories.

Open Human Resources.

Open the EU HCM Dev subaccount.

This matters because the task must be completed specifically in EU HCM Dev. SAP documents that Cloud Foundry is enabled at subaccount level, and the system creates a Cloud Foundry org linked to that subaccount.

Part 1 - Enable the Cloud Foundry environment

Step 1 - Open the subaccount overview

In EU HCM Dev, go to Overview.

Explanation:

SAP Help describes the cockpit flow for enabling Cloud Foundry from the subaccount Overview page.

What to verify

You should see a Cloud Foundry section on the overview page.

Step 2 - Start enabling Cloud Foundry

In the Cloud Foundry section, click Enable Cloud Foundry.

Explanation:

This starts creation of the Cloud Foundry organization for the subaccount. SAP notes that when you enable Cloud Foundry in a subaccount, the system automatically creates a Cloud Foundry org for it.

Step 3 - Enter the required Cloud Foundry values

In the enablement dialog, enter:

Landscape: cf-eu10-004

Instance Name: cf-eu-hcm-dev

Org Name: btpops#####-eu-hcm-dev

Then confirm by clicking Create or Enable.

Explanation:

The task gives you the exact landscape and naming values to use. SAP documentation shows that enabling Cloud Foundry in the cockpit requires naming the Cloud Foundry instance and org.

What to verify

After the process completes, the subaccount should show Cloud Foundry as enabled, with the org created for EU HCM Dev.

□ Part 2 - Create the space

Step 4 - Open Spaces

In EU HCM Dev, after Cloud Foundry is enabled, open:

Cloud Foundry

Spaces

Explanation:

SAP Help shows that spaces are created from the Spaces area after Cloud Foundry is enabled in the subaccount.

□ Step 5 - Create the space

Click Create Space.

Enter:

Space Name: activity-recording

Confirm by clicking Create.

□ Explanation:

This creates the required Cloud Foundry space inside the org for EU HCM Dev. SAP's cockpit documentation and setup guides show this as the standard next step after enabling the environment.

What to verify

You should now see:

activity-recording

in the list of Cloud Foundry spaces.

Part 3 - Create the space quota

Step 6 - Open Cloud Foundry Space Quotas

In EU HCM Dev, open:

Cloud Foundry

Space Quotas

Explanation:

SAP Help states that, in the Cloud Foundry environment, the quotas allocated to a subaccount can be further distributed by creating space quota plans, and these are managed from the Cloud Foundry Space Quotas area.

Step 7 - Create a new space quota

Click Create Space Quota or New Space Quota.

Enter the quota name:

half-org-quota

Explanation:

This creates a quota plan that you will assign to the required space. SAP Help describes creating space quota plans in the subaccount and then assigning them to spaces.

Step 8 - Set quota values to half of the org quota

In the quota form, set the values to half of the available org quota for:

Memory

Routes

Services

Instance Memory

For App Instances, set:

Unlimited

Then save the quota.

□ Explanation:

The simulation asks you to halve the available org quota for those four dimensions. SAP Help confirms that space quotas are used to limit resource consumption inside the org by defining values such as memory, routes, and service instances, and that these plans can then be assigned to spaces.

How to calculate "half"

Use the current org quota values shown in the Cloud Foundry quota screens and divide each by 2 before entering it.

Examples:

If org memory = 2 GB, enter 1 GB

If routes = 20, enter 10

If services = 200, enter 100

If instance memory = 2 GB, enter 1 GB

What to verify

The new quota plan should exist as:

half-org-quota

with the reduced values saved.

□ Part 4 - Assign the quota to the space

Step 9 - Assign the quota to activity-recording

Open the newly created quota:

half-org-quota

Choose Assign Spaces or Assign to Spaces

Select:

activity-recording

Save the assignment

Explanation:

SAP Help states that after creating a space quota, you assign it to one or more spaces from the space quota management flow.

What to verify

The quota half-org-quota should now be assigned to:

activity-recording

□

Final expected result

Inside EU HCM Dev:

Cloud Foundry is enabled

landscape is cf-eu10-004

instance name is cf-eu-hcm-dev

org name is btpops#####-eu-hcm-dev

space activity-recording exists

space quota half-org-quota exists

memory, routes, services, and instance memory are each set to half of the available org quota app instances are unlimited quota half-org-quota is assigned to activity-recording Common mistakes to avoid Enabling Cloud Foundry in the wrong subaccount; it must be EU HCM Dev.

Using the wrong landscape; the task explicitly requires cf-eu10-004.

Typing the wrong org name; use exactly btpops#####-eu-hcm-dev.

Forgetting to create the space before assigning the quota.

Entering full org quota instead of half.

Limiting app instances to a number instead of leaving them unlimited.

Creating the quota but not assigning it to activity-recording.

質問 # 11

SIMULATION

Create Directories and Subaccounts

In a global account for SAP Business Technology Platform (BTP), create a hierarchy of subaccounts using directories.

Task 1: Create Directories

In your SAP BTP cockpit, create the directory Americas (Description: Americas Accounts) with your global account as the parent.

Create the directory Eurasia (Description: Eurasia Accounts) with your global account as the parent.

Create the directory Partner (Description: Partner Accounts) with the Americas directory as the parent. Add the label access with value external.

Create the directory Human Resources (Description: Human Resources Accounts) with the Eurasia directory as the parent. Add the label access with value internal.

正解:

解説:

See the Explanation below for complete solution

Explanation:

Task 1: Create Directories

You need to create these directories:

Americas

Eurasia

Partner under Americas with label access=external

Human Resources under Eurasia with label access=internal

Before You Start

Log in to the SAP BTP Cockpit.

Make sure you are inside the correct Global Account.

Open the left-side navigation menu.

Why this is important:

All directories in this task must be created inside the correct global account hierarchy. If you create them in the wrong location, the simulation result will be incorrect.

Step 1 - Create Directory Americas

What to do

In the SAP BTP Cockpit, select your Global Account.

In the left navigation menu, click Directories.

Click Create or Create Directory.

Fill the fields as follows:

Name: Americas

Description: Americas Accounts

Parent: your Global Account

Click Create.

□ Explanation:

This creates a top-level directory directly under the global account.

It will later be used as the parent for the Partner directory.

What to verify

After creation, you should see:

Americas

listed under the directories of the global account.

Step 2 - Create Directory Eurasia

What to do

Stay in Directories.

Click Create Directory again.

Fill the fields:

Name: Eurasia

Description: Eurasia Accounts

Parent: your Global Account

Click Create.

□ Explanation:

This creates another top-level directory, parallel to Americas.

What to verify

You should now see both:

Americas

Eurasia

under the global account.

Step 3 - Create Directory Partner under Americas

What to do

In the Directories area, select Americas.

Click Create Directory.

Enter:

Name: Partner

Description: Partner Accounts

Parent: Americas

Locate the Labels section.

Add a new label:

Key: access

Value: external

Click Create.

□

Explanation:

This creates Partner as a child directory under Americas.

The label is required and must be entered exactly:

access = external

This label helps classify the directory.

What to verify

Under Americas, you should now see:

Partner

and the directory should contain the label:

access=external

Step 4 - Create Directory Human Resources under Eurasia

What to do

Go back to the Directories list.

Select Eurasia.

Click Create Directory.

Enter:

Name: Human Resources

Description: Human Resources Accounts

Parent: Eurasia

In the Labels section, add:

Key: access

Value: internal

Click Create.

□

Explanation:

This creates Human Resources as a child directory under Eurasia.

The required label is:

access = internal

What to verify

Under Eurasia, you should now see:

Human Resources

and the label should be:

access=internal

Final Expected Directory Structure

After completing Task 1, your structure must be exactly like this:

Global Account

Americas

Partner

Label: access=external

Eurasia

Human Resources

Label: access=internal

□

Important Checks Before Moving On

Verify all of the following:

Americas exists

Eurasia exists

Partner is under Americas
Human Resources is under Eurasia
Partner has label access=external
Human Resources has label access=internal
All names and descriptions are entered exactly as required
Common Mistakes to Avoid

1. Wrong parent

Partner must be created under Americas

Human Resources must be created under Eurasia

2. Wrong label key or value

Use exactly:

access → external

access → internal

3. Spelling errors

Be careful with:

Americas

Eurasia

Partner

Human Resources

4. Creating all directories directly under the global account

Only Americas and Eurasia are direct children of the global account.

Partner and Human Resources must be child directories.

質問 # 12

SIMULATION

Task 2: Create Subaccounts in a Directory

In the Partner directory, create the subaccount AM PA Dev Test (Description: Partner Development and Testing) with subdomain btpops#####-am-pa-dev-test in the region Microsoft Azure → US West (WA) cf-us20.

In the Partner directory, create the subaccount AM PA Prod (Description: Partner Production) with subdomain btpops#####-am-pa-prod using AM PA Dev Test as source subaccount. Set the subaccount as used in production.

正解:

解説:

See the Explanation below for complete solution.

Explanation:

Task 2 - Create Subaccounts in a Directory

You must create these two subaccounts inside the Partner directory:

AM PA Dev Test

AM PA Prod

Important:

Replace ##### with your global account number

Enter all names and subdomains exactly

Be careful with hyphens and spaces

AM PA Prod must be marked as used in production

Before You Start

Log in to SAP BTP Cockpit.

Open your correct Global Account.

Go to Directories.

Open the Partner directory.

Why this matters:

Both subaccounts in this task must be created inside the Partner directory. If you create them under the global account or another directory, the task will be wrong.

Step 1 - Open the Partner Directory

What to do

In the left menu, click Directories.

In the directory list, select Partner.

Explanation:

The Partner directory is the container where both required subaccounts must be created.

What to verify

You should now be inside the Partner directory page.

Step 2 - Start Creating the First Subaccount

What to do

Inside the Partner directory, go to Subaccounts.

Click Create → Subaccount.

Explanation:

This opens the subaccount creation screen.

What to verify

You should now see the form for creating a new subaccount.

Step 3 - Enter Data for AM PA Dev Test

What to do

Enter the following values:

Display Name / Name: AM PA Dev Test

Description: Partner Development and Testing

Subdomain: btpops#####-am-pa-dev-test

Then choose the region:

Cloud Provider: Microsoft Azure

Region: US West (WA)

Environment / Technical Region: cf-us20

After checking all values, click Create.

Explanation:

This creates the development and testing subaccount for the Partner directory.

The important points are:

the subaccount name must match exactly

the subdomain must include your account number in place of #####

the region must be Microsoft Azure → US West (WA) cf-us20

What to verify

After creation, you should see the new subaccount:

AM PA Dev Test

inside the Partner directory.

Step 4 - Confirm the First Subaccount Exists

What to do

Check the subaccounts list under Partner.

Explanation:

Before creating the production subaccount, confirm that AM PA Dev Test was created successfully, because it will be used as the source subaccount for the next step.

What to verify

You should see:

AM PA Dev Test

If it is not there, do not continue until it is created correctly.

Step 5 - Start Creating the Second Subaccount

What to do

Still inside the Partner directory, click Create → Subaccount again.

Explanation:

This opens a new subaccount creation form for the production subaccount.

Step 6 - Enter Data for AM PA Prod

What to do

Enter the following values:

Display Name / Name: AM PA Prod

Description: Partner Production

Subdomain: btpops#####-am-pa-prod

Then set:

Source Subaccount: AM PA Dev Test

Enable the production setting:

Used in Production: Yes

Then click Create.

Explanation:

This creates the production subaccount by using AM PA Dev Test as the source subaccount.

Using a source subaccount means SAP BTP copies base settings from the selected source, which helps keep configuration aligned.

The production indicator is mandatory here because this is the production subaccount.

What to verify

After creation, you should see:

AM PA Prod

inside the Partner directory, and it should be marked as a production subaccount.

Final Expected Result for Task 2

Inside the Partner directory, you must have these two subaccounts:

1. AM PA Dev Test

Description: Partner Development and Testing

Subdomain: btpops#####-am-pa-dev-test

Region: Microsoft Azure → US West (WA) cf-us20

2. AM PA Prod

Description: Partner Production

Subdomain: btpops#####-am-pa-prod

Source Subaccount: AM PA Dev Test

Used in Production: Yes

Common Mistakes to Avoid

1. Creating the subaccounts in the wrong place

Both subaccounts must be created in:

Partner directory

Not in:

Global Account

Americas

Eurasia

Human Resources

2. Wrong subdomain format

Use exactly:

btpops#####-am-pa-dev-test

btpops#####-am-pa-prod

Replace only ##### with your global account number.

Do not:

remove hyphens

add spaces

misspell dev-test or pa-prod

3. Wrong region for AM PA Dev Test

It must be:

Microsoft Azure

US West (WA)

cf-us20

4. Forgetting the source subaccount for AM PA Prod

You must select:

AM PA Dev Test

as the source subaccount.

5. Forgetting the production flag

For AM PA Prod, make sure:

Used in Production is enabled

質問 # 13

SIMULATION

Enable Service Subscriptions

Task 2: Entitle and Subscribe a Service in a Subaccount

In your AM PA Prod subaccount, entitle the standard (Application) service plan for SAP Build Work Zone, standard edition.

In the AM PA Prod subaccount, establish a trust to the agylamkzw.accounts.ondemand.com identity provider.

In your AM PA Prod subaccount, create a service subscription for SAP Build Work Zone, standard edition with the standard service plan .

正解:

解説:

See the Explanation below for complete solution.

Explanation:

Part A - Entitle the Service Plan in AM PA Prod

Step 1 - Open the AM PA Prod Subaccount

What to do

In the SAP BTP Cockpit, go to Directories.

Open the Partner directory.

Select the subaccount AM PA Prod.

Explanation:

This opens the exact subaccount where the entitlement and subscription must be created.

What to verify

You should now be on the AM PA Prod subaccount page.

Step 2 - Open Entitlements in the Subaccount

What to do

In AM PA Prod, open Entitlements.

Explanation:

SAP documents that subaccount entitlements are configured in the subaccount's entitlement area, where you add service plans and quotas available to that subaccount.

What to verify

You should see the Entitlements screen for AM PA Prod.

□ Step 3 - Add the Required Service Plan

What to do

Click Configure Entitlements or Add Service Plans.

Search for:

SAP Build Work Zone, standard edition

Select the service.

Choose the plan:

standard (Application)

Add the service plan.

Save the entitlement changes.

Explanation:

The task requires the standard (Application) plan specifically. SAP's entitlement flow requires you to add the service plan to the subaccount before you can subscribe to the application.

What to verify

Under Entitlements, you should now see:

SAP Build Work Zone, standard edition

plan: standard (Application)

Part B - Establish Trust to the Identity Provider

Step 4 - Open Trust Configuration

What to do

In the AM PA Prod subaccount, go to:

Security

Trust Configuration

Explanation:

SAP Help states that trust to a custom identity provider is established from the cockpit in Security > Trust Configuration.

What to verify

You should be on the Trust Configuration page of AM PA Prod.

Step 5 - Start the Trust Setup

What to do

Click Establish Trust or New Trust Configuration.

□ Explanation:

This opens the wizard or form to add a trusted identity provider for the subaccount. SAP documents this as the standard cockpit flow for custom identity provider trust.

Step 6 - Enter the Identity Provider

What to do

In the trust configuration, use the identity provider:

agvlankzw.accounts.ondemand.com

Continue through the wizard and confirm the trust setup.

Save the configuration.

Explanation:

The simulation explicitly requires trust to that identity provider domain. For SAP Build Work Zone, standard edition, SAP also notes

that the subaccount must trust an identity provider before subscription use cases for business users are completed.

What to verify

On the Trust Configuration page, the identity provider agvlamkzw.accounts.ondemand.com should appear as trusted.

□ Part C - Create the Service Subscription

Step 7 - Open the Subscription Area

What to do

In AM PA Prod, go to:

Services

Instances and Subscriptions

Explanation:

SAP Help for SAP Build subscriptions points to the subaccount subscription flow after the entitlement is available. In current cockpit usage, subscriptions are created from the subaccount's services are a.

What to verify

You should see the Instances and Subscriptions page.

□ Step 8 - Create the Subscription

What to do

Click Create.

Choose Subscription if a type selection appears.

Search for:

SAP Build Work Zone, standard edition

Select the plan:

standard

Then confirm the creation.

□ Explanation:

SAP's getting-started guidance for SAP Build Work Zone, standard edition says that once the subaccount has the required entitlement, you can subscribe to the application from the subaccount.

What to verify

You should now see a subscription entry for:

SAP Build Work Zone, standard edition

plan: standard

Step 9 - Confirm the Subscription Is Active

What to do

Check the status of the new subscription in Instances and Subscriptions.

Explanation:

The subscription should be visible and active in the subaccount after creation.

What to verify

You should see:

SAP Build Work Zone, standard edition

subscription created successfully

SAP's guidance for subscription-based applications consistently uses this subaccount subscription flow after entitlement is present.

□ Final Expected Result for Task 2

Inside AM PA Prod:

the entitlement SAP Build Work Zone, standard edition is assigned

the entitled plan is standard (Application)

trust is established to agvlamkzw.accounts.ondemand.com

a subscription exists for SAP Build Work Zone, standard edition

the subscription uses the standard service plan

Common Mistakes to Avoid

1. Doing the entitlement in the wrong place

This task must be done in:

AM PA Prod subaccount

Not only in:

Partner directory

Directory entitlement and subaccount entitlement are different scopes in the cockpit.

2. Choosing the wrong service or wrong plan

Use exactly:

SAP Build Work Zone, standard edition

standard (Application) for entitlement

standard for the subscription selection screen

SAP's service subscription flow starts only after the correct entitlement exists.

3. Skipping trust configuration

The simulation explicitly requires trust to:

agvlankzw.accounts.ondemand.com

Trust is configured in Security > Trust Configuration.

4. Looking for subscription creation before entitlement

The entitlement must be added first, otherwise the service may not appear in the subscription creation flow.

Quick Validation Checklist

Confirm all of the following in AM PA Prod:

Entitlements contains SAP Build Work Zone, standard edition

the plan is standard (Application)

Trust Configuration shows agvlankzw.accounts.ondemand.com

Instances and Subscriptions shows SAP Build Work Zone, standard edition the subscription is created successfully

質問 # 14

.....

初めて練習を選ぶことは、ギャンブルをすることに少し似ていると思うかもしれません。ただし、C_ADBTP_2601学習クイズでは、参考になる無料のデモと、バックアップとしてのプロのエリートが用意されています。彼らは、C_ADBTP_2601トレーニング資料で発生したエラーについて妥協しない検閲エリートの集まりです。そのため、彼らの正解率は信じられないほど高く、試験の受験者の98%以上が合格しました。あなたのように成功することに熱心な熱心な受験者に試験の知識を伝えることで、彼らはそれを助けを提供する責任として扱います。そのため、情報の特性に従って次のC_ADBTP_2601学習ガイドを入手できる場合は、目覚ましい進歩を遂げてください。

C_ADBTP_2601参考資料: https://www.it-passports.com/C_ADBTP_2601.html

It-Passports C_ADBTP_2601参考資料は世界的にこの試験の合格率を最大限に高めることに力を尽くしています、C_ADBTP_2601問題集を通して、試験に合格するのは簡単になって、他人と先立って資格認定を取られます、SAP C_ADBTP_2601技術内容 あなたがマスターしていない知識ポイントを知ることができます、SAP C_ADBTP_2601技術内容 便宜上、今後の参考のためにいくつかのデモを提供しており、それらのダウンロードに対して料金を請求しないことをお約束します、SAP C_ADBTP_2601技術内容 それに、資料もずっとアップグレードしていますから、実際の試験問題とよく似ています、C_ADBTP_2601試験参考書を作る専門家は問題集の内容の研究に取り組んでいます。

署名を拒否することは、出版に反対する記事として理解されるかもしれませんが、実際には同意しますC_ADBTP_2601最新知識、すみません、それで余計遅くなったんじゃ腰を上げて頭を下げると、いやいやと小野は眉を下げて微笑む、It-Passportsは世界的にこの試験の合格率を最大限に高めることに力を尽くしています。

素敵なC_ADBTP_2601技術内容試験-試験の準備方法-完璧なC_ADBTP_2601参考資料

C_ADBTP_2601問題集を通して、試験に合格するのは簡単になって、他人と先立って資格認定を取られます、あなたがマスターしていない知識ポイントを知ることができます、便宜上、今後の参考のためにいくつかのデモを提供しており、それらのダウンロードに対して料金を請求しないことをお約束します。

それに、資料もずっとアップC_ADBTP_2601グレードしていますから、実際の試験問題とよく似ています。

- C_ADBTP_2601日本語資格取得 ◎ C_ADBTP_2601試験対策 □ C_ADBTP_2601日本語pdf問題 □ □ www.xhs1991.com □で「C_ADBTP_2601」を検索し、無料でダウンロードしてくださいC_ADBTP_2601日本語版参考資料
- 試験の準備方法-実際のC_ADBTP_2601技術内容試験-効率的なC_ADBTP_2601参考資料 □ ➡ www.goshiken.com □ □ □ サイトで ➡ C_ADBTP_2601 □ の最新問題が使えるC_ADBTP_2601日本語版参考資料
- SAP C_ADBTP_2601認定試験に対する評判が良い問題集 □ (C_ADBTP_2601) を無料でダウンロード 《 www.passtest.jp 》ウェブサイトを入力するだけC_ADBTP_2601基礎問題集
- 試験の準備方法-実際のC_ADBTP_2601技術内容試験-効率的なC_ADBTP_2601参考資料 □ 今すぐ □ www.goshiken.com □ を開き、▷ C_ADBTP_2601 ◁ を検索して無料でダウンロードしてください

