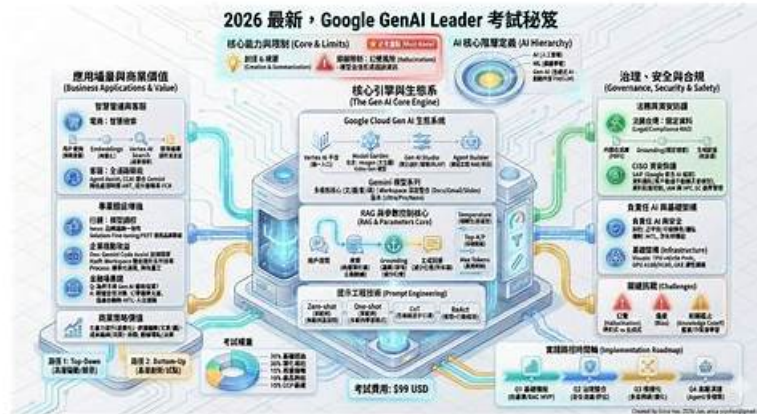


Generative-AI-Leader考試證照綜述 & Generative-AI-Leader權威考題



BONUS!!! 免費下載KaoGuTi Generative-AI-Leader考試題庫的完整版: <https://drive.google.com/open?id=1742DhDUxuXcpcQYqHV6AXQjoKRllWsAZ>

KaoGuTi為每個需要通過Google的Generative-AI-Leader考試認證的考生提供了一個明確和卓越的解決方案，我們為你提供Google的Generative-AI-Leader考試詳細的問題及答案，我們團隊的IT專家是最有經驗和資格的，我們的考試測試題及答案幾乎和真實得考試一樣，做到這樣的確很了不起，更重要的是我們KaoGuTi網站在全球範圍內執行這項考試培訓通過率最大。

Google Generative-AI-Leader 考試大綱：

主題	簡介
主題 1	<ul style="list-style-type: none"> Google Cloud's Generative AI Offerings: This section of the exam measures the skills of Cloud Architects and highlights Google Cloud's strengths in generative AI. It emphasizes Google's AI-first approach, enterprise-ready platform, and open ecosystem. Candidates will learn about Google's AI infrastructure, including TPUs, GPUs, and data centers, and how the platform provides secure, scalable, and privacy-conscious solutions. The section also explores prebuilt AI tools such as Gemini, Workspace integrations, and AgentSpace, while demonstrating how these offerings enhance customer experience and empower developers to build with Vertex AI, RAG capabilities, and agent tooling.
主題 2	<ul style="list-style-type: none"> Business Strategies for a Successful Generative AI Solution: This section of the exam measures the skills of Cloud Architects and evaluates the ability to design, implement, and manage enterprise-level generative AI solutions. It covers the decision-making process for selecting the right solution, integrating AI into an organization, and measuring business impact. A strong emphasis is placed on secure AI practices, highlighting Google's Secure AI Framework and cloud security tools, as well as the importance of responsible AI, including fairness, transparency, privacy, and accountability.
主題 3	<ul style="list-style-type: none"> Fundamentals of Generative AI: This section of the exam measures the skills of AI Engineers and focuses on the foundational concepts of generative AI. It covers the basics of artificial intelligence, natural language processing, machine learning approaches, and the role of foundation models. Candidates are expected to understand the machine learning lifecycle, data quality, and the use of structured and unstructured data. The section also evaluates knowledge of business use cases such as text, image, code, and video generation, along with the ability to identify when and how to select the right model for specific organizational needs.
主題 4	<ul style="list-style-type: none"> Techniques to Improve Generative AI Model Output: This section of the exam measures the skills of AI Engineers and focuses on improving model reliability and performance. It introduces best practices to address common foundation model limitations such as bias, hallucinations, and data dependency, using methods like retrieval-augmented generation, prompt engineering, and human-in-the-loop systems. Candidates are also tested on different prompting techniques, grounding approaches, and the ability to configure model settings such as temperature and token count to optimize results.

實用的Generative-AI-Leader考試證照綜述 |高通過率的考試材料|有效的Generative-AI-Leader權威考題

作為一位 Generative-AI-Leader 考生而言，作好充分的準備可以幫助您通過考試。KaoGuTi 的 Generative-AI-Leader 題庫覆蓋了最新的 Generative-AI-Leader 考試指南及考試真題題型。Generative-AI-Leader 隸屬於 Google 認證考試科目。我們的 Generative-AI-Leader 認證考題已經幫助很多考生通過考試，試題質量和考題的覆蓋率都有保證，保證考生權利不受任何損失。獲取 Generative-AI-Leader 考試認證證書可以用來實施一些複雜多變的工程。

最新的 Google Cloud Certified Generative-AI-Leader 免費考試真題 (Q23-Q28):

問題 #23

Summit Dynamics has three groups that plan to use generative AI on Google Cloud. The Innovation Lab requires complete control of the guest operating system and exact NVIDIA driver builds on virtual machines so they can trial cutting edge AI frameworks. The Product Engineering group wants to write only Python code for a custom model while Google manages the operating system, autoscaling, and infrastructure. The Communications department wants a ready to use assistant that helps them compose emails inside their current Workspace apps with no coding.

Which combination of Google Cloud services correctly aligns to the IaaS, PaaS, and SaaS models for these groups?

- A. 1 maps to Gemini for Workspace SaaS, 2 maps to Vertex AI PaaS, 3 maps to Compute Engine IaaS
- B. 1 maps to Vertex AI PaaS, 2 maps to Compute Engine IaaS, 3 maps to Gemini for Workspace SaaS
- **C. 1 maps to Compute Engine IaaS, 2 maps to Vertex AI PaaS, 3 maps to Gemini for Workspace SaaS**
- D. 1 maps to Google Kubernetes Engine, 2 maps to Vertex AI PaaS, 3 maps to Gemini for Workspace SaaS

答案： C

解題說明：

The Innovation Lab needs full control of the guest operating system and precise NVIDIA driver versions on virtual machines. Compute Engine provides raw VM instances in an infrastructure as a service model so the team can pick images, install and pin specific drivers, and manage the OS as required.

The Product Engineering group wants to write only Python while Google manages the operating system, autoscaling, and infrastructure. Vertex AI fits this platform as a service need because it provides managed training and serving, serverless endpoints, and autoscaling so developers can focus on code and models rather than machines.

The Communications department wants a ready to use assistant in existing Workspace apps with no coding. Gemini for Workspace is software as a service that integrates into Gmail, Docs, and other Workspace apps and delivers assistance without any infrastructure setup.

問題 #24

A highly regulated financial institution wants to use Gemini as the core decision engine for a loan approval system that will deterministically approve or reject loan applications based on a strict set of predefined criteria. Why is this an inappropriate use case for Gemini?

- A. Gemini deployment for this scenario would be too expensive and complex.
- B. Gemini is not equipped to handle structured numerical data for financial assessments.
- **C. Gemini is designed for flexible content generation and inference, not rigid rule-based decisions.**
- D. Gemini cannot integrate with required financial databases.

答案： C

解題說明：

Gemini, as a large language model, excels at flexible content generation, summarization, understanding, and inference. However, it is not designed for deterministic, rule-based decision-making that requires absolute consistency and adherence to strict, predefined criteria, as is common in highly regulated financial systems like loan approvals. Such systems typically require traditional programming logic or specific rule engines for auditable and consistent outcomes.

問題 #25

A development team is building an internal knowledge base chatbot to answer employee questions about company policies and procedures. This information is stored across various documents in Google Cloud Storage and is updated regularly by different departments. What is the primary benefit of using Google Cloud's RAG APIs in this scenario?

- A. They allow the development team to train a single foundation model on all company documents.
- **B. They enable the generative AI model to retrieve the most up-to-date and relevant information from the policy documents in real-time.**
- C. They provide a pre-built user interface for the chatbot, simplifying the front-end development process.
- D. They automatically create summaries of all company policies, which are then presented to employees as quick answers.

答案: B

解題說明:

The primary benefit of RAG (Retrieval-Augmented Generation) in this context is its ability to ensure the chatbot provides accurate and up-to-date information. By retrieving relevant and recent policy documents from Cloud Storage in real-time and then grounding the LLM's response with this information, the chatbot avoids hallucinating or providing outdated answers, which is crucial for an internal knowledge base.

問題 #26

A team is using a generative AI model to automatically generate short summaries of customer feedback. They need to ensure that these summaries are concise and easy to digest. What model setting should they adjust?

- A. Safety settings
- B. Top-p (nucleus sampling)
- C. Temperature
- **D. Output length**

答案: D

解題說明:

The objective is to make the generated summaries concise--that is, to control their length. In the configuration of a generative AI model, particularly a large language model (LLM), the parameter used to directly control the maximum size of the response is the Output Length parameter (often referred to as `max_output_tokens` or `max_tokens`). By setting a low limit on this parameter, the team can ensure that the model is forced to terminate its response once that limit is reached, resulting in a shorter, more concise summary that is "easy to digest," as requested.

問題 #27

A user asks a generative AI model about the scientific accuracy of a popular science fiction movie. The model confidently states that humans can indeed travel faster than light, referencing specific but entirely fictional theories and providing made-up explanations of how this is achieved according to the movie's "established science." The model presents this information as factual, without indicating that it originates from a fictional work. What type of model limitation is this?

- A. Knowledge cutoff
- B. Data dependency
- **C. Hallucination**
- D. Bias

答案: C

解題說明:

The limitation described is the AI model generating a false or misleading response (humans traveling faster than light is scientifically impossible/unproven) and presenting it as fact (confidently stating a fictional theory is real) without the ability to indicate its uncertainty or the source's fictional nature. This is the definition of a Hallucination in generative AI. AI Hallucinations occur when a Large Language Model (LLM) generates outputs that are factually incorrect, irrelevant, or nonsensical, despite being linguistically fluent and seemingly plausible. They arise because the model is designed to predict the most statistically probable next word or token based on its training data, even when it lacks information or when its training data contains a mixture of fact and fiction. The model is

overconfident in its generated response, a behavior that diminishes user trust and reliability, especially in applications where factual accuracy is critical.

問題 #28

.....

KaoGuTi有最新的Google Generative-AI-Leader 認證考試的培訓資料，KaoGuTi的一些勤勞的IT專家通過自己的專業知識和經驗不斷地推出最新的Google Generative-AI-Leader的培訓資料來方便通過Google Generative-AI-Leader的IT專業人士。Google Generative-AI-Leader的認證證書在IT行業中越來越有份量，報考的人越來越多了，很多人就是使用KaoGuTi的產品通過Google Generative-AI-Leader認證考試的。通過這些使用過產品的人的回饋，證明我們的KaoGuTi的產品是值得信賴的。

Generative-AI-Leader權威考題: https://www.kaoguti.com/Generative-AI-Leader_exam-pdf.html

- 新版Generative-AI-Leader題庫 □ Generative-AI-Leader考試資訊 ☀ Generative-AI-Leader參考資料 □ 立即在☀ www.pdfexamdumps.com □☀□上搜尋【Generative-AI-Leader】並免費下載Generative-AI-Leader考題套裝
- Generative-AI-Leader考試證照綜述: Google Cloud Certified - Generative AI Leader Exam確定通過考試 □ 免費下載 □ Generative-AI-Leader □ 只需在 □ www.newdumpspdf.com □ 上搜索Generative-AI-Leader軟件版
- Generative-AI-Leader題庫更新 □ Generative-AI-Leader考試備考經驗 □ Generative-AI-Leader考古題分享 □ 免費下載 ➤ Generative-AI-Leader □ 只需進入【www.testpdf.net】網站Generative-AI-Leader在線題庫
- Generative-AI-Leader熱門考古題 □ Generative-AI-Leader考試證照 □ Generative-AI-Leader熱門考古題 □ { www.newdumpspdf.com } 是獲取 ➤ Generative-AI-Leader □ 免費下載的最佳網站Generative-AI-Leader軟件版
- Generative-AI-Leader考題套裝 □ Generative-AI-Leader考試證照 □ Generative-AI-Leader參考資料 □ 透過 { www.newdumpspdf.com } 輕鬆獲取 ⇒ Generative-AI-Leader ⇐ 免費下載Generative-AI-Leader信息資訊
- 準確的Generative-AI-Leader考試證照綜述和資格考試中的領先提供商 & 可信賴的Generative-AI-Leader權威考題 □ 開啟 [www.newdumpspdf.com] 輸入【Generative-AI-Leader】並獲取免費下載Generative-AI-Leader考證
- Generative-AI-Leader信息資訊 □ Generative-AI-Leader考試指南 □ Generative-AI-Leader考題套裝 □ ▷ tw.fast2test.com ◁ 上搜索 □ Generative-AI-Leader □ 輕鬆獲取免費下載新版Generative-AI-Leader題庫
- Generative-AI-Leader在線題庫 □ Generative-AI-Leader考題套裝 □ Generative-AI-Leader考題套裝 □ 在《 www.newdumpspdf.com 》網站下載免費 ▷ Generative-AI-Leader ◁ 題庫收集Generative-AI-Leader在線題庫
- 準確的Generative-AI-Leader考試證照綜述和資格考試中的領先提供商 & 可信賴的Generative-AI-Leader權威考題 □ { tw.fast2test.com } 上的 □ Generative-AI-Leader □ 免費下載只需搜尋Generative-AI-Leader參考資料
- 準確的Generative-AI-Leader考試證照綜述和資格考試中的領先提供商 & 可信賴的Generative-AI-Leader權威考題 □ 在 (www.newdumpspdf.com) 網站上免費搜索 ➤ Generative-AI-Leader □ 題庫Generative-AI-Leader軟件版
- Generative-AI-Leader熱門考古題 □ Generative-AI-Leader考題套裝 □ Generative-AI-Leader考證 □ 請在 { www.vcesoft.com } 網站上免費下載 □ Generative-AI-Leader □ 題庫Generative-AI-Leader考證
- reganjwlv514147.blogars.com, barryonmt642732.tokka-blog.com, heiditxo651893.answerblogs.com, karindvdj738524.blogsvirals.com, kbookmarking.com, bookmark-master.com, startupxplore.com, aishaifcu394320.ianthewiki.com, owaineuak412980.liveblogs.com, bookmarkuse.com, Disposable vapes

BONUS!!! 免費下載KaoGuTi Generative-AI-Leader考試題庫的完整版: <https://drive.google.com/open?id=1742DhDUxuXcpcQYqHV6AXQjoKRllWsAZ>