

IDFX Exam Overviews & IDFX Certification Practice

NCIDQ IDFX - Practice Exam Questions and Answers 2024

Your client would like to relocate from an existing ground floor location to several floors in a new building. You have been hired to evaluate the feasibility of the move. Which action should you take FIRST?

- A. Interview several employees from each division of the company
 - B. Determine the usable floor area of each floor of the new building
 - C. Assess which spaces will make up the core of the building
 - D. Locate all load-bearing components on each floor - ANSWER
- Answer: B

When are three-dimensional studies MOST useful in the design process?

- A. In the final contract document presentation
 - B. During the programming phase
 - C. As a rough sketch during the schematic stage
 - D. Throughout the entire design process - ANSWER
- Answer: D

You are renovating a healthcare facility for patients with mental and psychological disorders. Based on research on color in healing environments, which of the following is the MOST appropriate wall color choice for the individual patient rooms?

- A. Red-orange
- B. Blue-green
- C. Yellow

What's more, part of that ActualtestPDF IDFX dumps now are free: https://drive.google.com/open?id=1zdjLE7u19HRfxvorn9_Bd1L0IRjYcKcz

Each product has a trial version and our products are without exception, literally means that our IDFX guide torrent can provide you with a free demo when you browse our website of IDFX prep guide, and we believe it is a good way for our customers to have a better understanding about our products in advance. Moreover if you have a taste ahead of schedule, you can consider whether our IDFX Exam Torrent is suitable to you or not, thus making the best choice. What's more, if you become our regular customers, you can enjoy more membership discount and preferential services.

CIDQ IDFX Exam Syllabus Topics:

Topic	Details
Topic 1	<ul style="list-style-type: none">Construction Drawings, Schedules, and Specifications: This section of the exam measures skills of an Interior Designer and covers the production and interpretation of technical documents. Test takers must show mastery of drawing standards, dimensioning conventions, and code-required annotations, as well as the ability to develop plans, sections, elevations, schedules, and millwork details that accurately communicate design intent.
Topic 2	<ul style="list-style-type: none">Relationship between Human Behavior and the Designed Environment: This section of the exam measures skills of a Design Consultant and covers interpreting how people interact with spaces. Examinees demonstrate an understanding of human factors—from ergonomic dimensions to social and cultural influences—and how universal design principles ensure accessibility and inclusivity, while also considering sensory impacts such as lighting, acoustics, and thermal comfort.

Topic 3	<ul style="list-style-type: none"> • Interior Building Materials and Finishes: This section of the exam measures skills of an Interior Designer and explores the selection and specification of surface materials. Examinees must show comprehension of the performance standards, installation methods, and technical considerations for textiles, floor coverings, wall and ceiling treatments, acoustical products, and signage within interior environments.
Topic 4	<ul style="list-style-type: none"> • Design Communication Techniques: This section of the exam measures skills of an Interior Designer and focuses on translating research and concepts into clear visual formats. Test takers show how they develop charts, infographics, and conceptual diagrams to convey ideas, and how they organize planning diagrams—like adjacency studies and zoning plans—to guide the layout and functional relationships within a space.
Topic 5	<ul style="list-style-type: none"> • Programming and Site Analysis: This section of the exam measures skills of an Interior Designer and covers the effective use of analytical techniques to understand a project's context. Candidates must show how they apply tools—such as spreadsheets, diagrams, and photographic studies—alongside research methods like observations and precedent studies to evaluate site factors including location, orientation, zoning restrictions, and existing conditions.
Topic 6	<ul style="list-style-type: none"> • Technical Specifications for Furniture, Fixtures, & Equipment and Lighting: This section of the exam measures skills of a Design Consultant and examines how to specify FF&E and lighting systems. Candidates demonstrate an understanding of life safety requirements, sustainability metrics, material performance standards, and how to choose appropriate fixtures—considering factors like luminous efficacy, color rendering, and energy load—to meet functional and environmental goals.
Topic 7	<ul style="list-style-type: none"> • Life Safety and Universal Design: This section of the exam measures skills of a Design Consultant and addresses the principles that protect occupants and ensure accessibility. Candidates demonstrate knowledge of life safety requirements—such as egress paths, fire separation, and alarm coordination—as well as universal design strategies that accommodate diverse abilities and special needs populations.

>> IDFX Exam Overviews <<

Reliable IDFX Exam Overviews - Win Your CIDQ Certificate with Top Score

The privacy protection of users is an eternal issue in the internet age. Many illegal websites will sell users' privacy to third parties, resulting in many buyers are reluctant to believe strange websites. But you don't need to worry about it at all when buying our IDFX learning engine: IDFX. We assure you that we will never sell users' information because it is damaging our own reputation. In addition, when you buy our IDFX simulating exam, our website will use professional technology to encrypt the privacy of every user to prevent hackers from stealing. We believe that business can last only if we fully consider it for our customers, so we will never do anything that will damage our reputation. Hope you can give our IDFX exam questions full trust, we will not disappoint you.

CIDQ Interior Design Fundamentals Exam Sample Questions (Q15-Q20):

NEW QUESTION # 15

What are blocking and stacking diagrams used to determine?

- A. Key departmental adjacencies
- B. Client organizational structure
- C. Square footage [m²] requirements
- D. Private office locations

Answer: A

Explanation:

Blocking and stacking diagrams are tools used during the programming and schematic design phases to plan the layout of a multi-story building. Blocking diagrams show the horizontal arrangement of departments or functions on each floor, while stacking diagrams show the vertical arrangement across floors. Together, they are used to determine key departmental adjacencies, ensuring that related departments are placed near each other, either on the same floor or on adjacent floors, to support workflow and efficiency. Option A (private office locations) is too specific for these diagrams, which focus on larger zones. Option B (client organizational structure) is determined during programming, not through these diagrams. Option D (square footage requirements) is

part of programming but not the primary purpose of blocking and stacking diagrams.

Verified Answer from Official Source:

The correct answer is verified using NCIDQ IDFX content on space planning tools.

Exact Extract: The NCIDQ IDFX Reference Manual states, "Blocking and stacking diagrams are used to determine key departmental adjacencies, showing the horizontal and vertical arrangement of functions in a multi-story building." The NCIDQ IDFX curriculum includes blocking and stacking diagrams as tools for organizing space in complex projects, focusing on adjacencies to enhance functionality.

Objectives:

* Use space planning tools to determine adjacencies (IDFX Objective: Programming and Site Analysis).

NEW QUESTION # 16

A designer is preparing a programming document for a tenant space. Which technique would BEST confirm that the available space is adequate for user needs?

- A. Compare the program area to the building utilization rate
- **B. Equate the program area to the usable area**
- C. Compare the program area to industry standards for occupancy type
- D. Equate the program area to the rentable area

Answer: B

Explanation:

During the programming phase, the designer must ensure that the available space meets the client's needs as outlined in the program. The program area represents the total space required for all functions (e.g., workstations, circulation, support spaces). The usable area is the actual space available for occupancy, excluding structural elements and common areas. Equating the program area to the usable area ensures that the space can accommodate all required functions without over- or underestimating the space. Option B (rentable area) includes common areas like hallways, which inflates the space and is not accurate for functional needs. Option C (building utilization rate) is a broader metric for overall building efficiency, not specific to the tenant space. Option D (industry standards) is useful for benchmarking but not for confirming specific space adequacy.

Verified Answer from Official Source:

The correct answer is verified using NCIDQ IDFX content on programming and space planning.

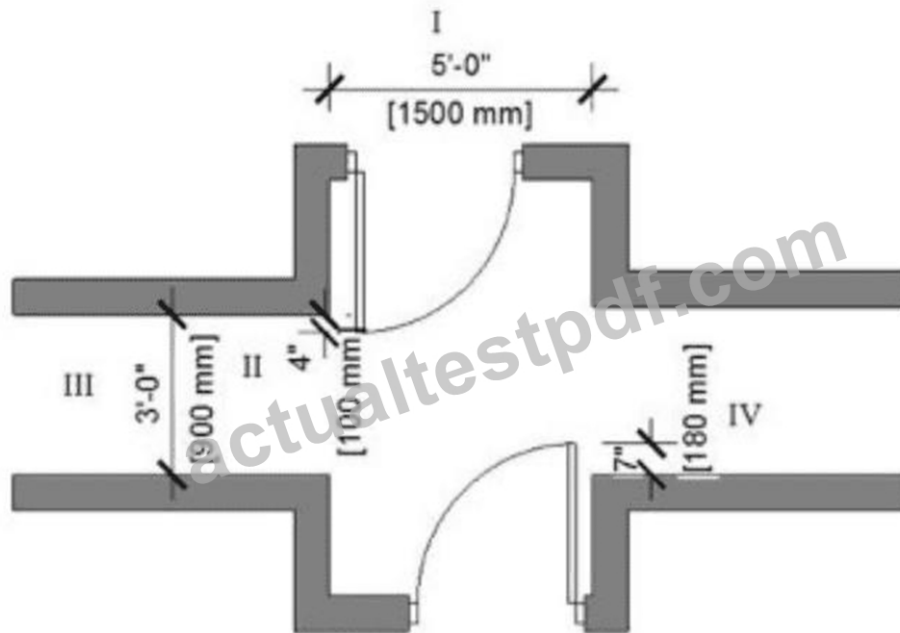
Exact Extract: The NCIDQ IDFX Reference Manual states, "To confirm space adequacy, the program area should be equated to the usable area of the tenant space to ensure all functional needs are met." The NCIDQ IDFX curriculum emphasizes accurate space analysis during programming, using usable area as the key metric for tenant spaces to ensure functionality.

Objectives:

* Analyze space requirements during programming (IDFX Objective: Programming and Site Analysis).

NEW QUESTION # 17

In the image below, which dimension must be changed to meet minimum means of egress requirements?



ActualtestPDF

- A. II
- **B. III**
- C. I
- D. IV

Answer: B

Explanation:

The means of egress is a continuous and unobstructed path of travel from any point in a building to a public way, as defined by the IBC. The NCIDQ IDFX Reference Manual and IBC Chapter 10 (Means of Egress) specify minimum clear widths for corridors to ensure safe evacuation. For most occupancies, such as business (Group B) or residential (Group R), the minimum clear width for a corridor is 44 inches (1118 mm) in a non-sprinklered building, though it can be reduced to 36 inches (914 mm) in certain cases, such as for smaller occupancies or residential corridors serving fewer than 50 occupants (per IBC Section 1020.2).

Let's evaluate the dimensions in the image:

* Dimension I: 5'-0" [1500 mm]: This is well above the minimum required width of 44 inches (1118 mm) or 36 inches (914 mm), so it meets egress requirements.

* Dimension II: 4'-0" [1200 mm]: This is also above the minimum required width, as 4 feet (1200 mm) exceeds both 44 inches and 36 inches.

* Dimension III: 3'-0" [900 mm]: This is below the minimum required width. At 3 feet (900 mm), it does not meet the 44-inch (1118 mm) requirement for most corridors, nor the 36-inch (914 mm) minimum for smaller residential corridors. This dimension must be increased to at least 36 inches, and likely 44 inches, depending on the occupancy and number of occupants served.

* Dimension IV: 4'-0" [1200 mm]: Like Dimension II, this meets the minimum requirements.

Since Dimension III (3'-0" or 900 mm) does not meet the minimum clear width for a means of egress, it must be changed to comply with building code requirements. The NCIDQ IDFX Reference Manual confirms that corridors must meet these minimum widths to ensure safe evacuation.

Verified Answer from Official Source: The correct answer is C, as verified by the NCIDQ IDFX Reference Manual and IBC Section 1020.

Exact Extract:

From the NCIDQ IDFX Reference Manual (Chapter 2: Building Codes and Standards): "Corridors must have a minimum clear width of 44 inches (1118 mm) in most occupancies, or 36 inches (914 mm) in certain residential settings, to meet means of egress requirements." Explanation from Official Source:

The NCIDQ IDFX Reference Manual explains that the minimum clear width for corridors in the means of egress is typically 44 inches, though it can be 36 inches in specific cases. Dimension III (3'-0" or 900 mm) falls below this threshold, making it non-compliant with egress requirements. Increasing this dimension to at least 36 inches, and likely 44 inches depending on the occupancy, ensures safe evacuation.

Objectives:

- * Understand the minimum clear width requirements for corridors in the means of egress.
- * Apply building code standards to ensure safe evacuation paths.

NEW QUESTION # 18

Which of the following window treatments is best suited for a curved window?

- A. Roller shade
- B. Horizontal blind
- C. Pleated shade
- D. Vertical blind

Answer: C

Explanation:

Curved windows, such as those in arched or bay window configurations, present unique challenges for window treatments because standard treatments may not conform to the window's shape. The NCIDQ IDFX Reference Manual and interior design standards provide guidance on selecting window treatments based on window shape, functionality, and aesthetics.

* A. Roller shade: Roller shades are flat and typically designed for straight, rectangular windows. They cannot easily conform to the curve of a window, making them difficult to install and operate on a curved window. While custom solutions exist, they are not the best fit for this scenario.

* B. Vertical blind: Vertical blinds are designed for tall, straight windows or sliding doors, with slats that hang vertically. They are not flexible enough to follow the curve of a window and would leave gaps, making them unsuitable for curved windows.

* C. Pleated shade: Pleated shades are made of fabric that is folded into accordion-like pleats, allowing them to be custom-cut and shaped to fit curved or arched windows. They can be installed in a fan-like configuration for arched windows or adjusted to follow the curve of a bay window, making them the most suitable option for curved windows. Pleated shades also provide light control and privacy while maintaining an aesthetic fit with the window's shape.

* D. Horizontal blind: Horizontal blinds have rigid slats that are designed for straight windows. They cannot bend or conform to a curved window, making them impractical for this application.

The NCIDQ IDFX Reference Manual highlights that pleated shades are often used for specialty windows, such as curved or arched windows, due to their flexibility and ability to be custom-fitted to non-standard shapes.

Verified Answer from Official Source: The correct answer is C, as verified by the NCIDQ IDFX Reference Manual.

Exact Extract:

From the NCIDQ IDFX Reference Manual (Chapter 8: Environmental Control Systems): "Pleated shades are best suited for curved or arched windows, as their flexible, accordion-like structure can be custom-cut to fit the window's shape while providing light control and privacy." Explanation from Official Source:

The NCIDQ IDFX Reference Manual explains that pleated shades are ideal for curved windows because their design allows them to be shaped to fit the window's contour, ensuring both functionality and aesthetics. This makes them a better choice than roller shades, vertical blinds, or horizontal blinds, which are designed for straight windows.

Objectives:

- * Understand the application of window treatments for specialty window shapes.
- * Select appropriate window treatments based on window configuration and design needs.

NEW QUESTION # 19

Which item is BEST to specify for a universal workstation?

- A. Overhead storage shelving
- B. Adjustable task light
- C. Adjustable height work surface
- D. Under counter filing cabinets

Answer: C

Explanation:

A universal workstation is designed to accommodate a wide range of users, including those with disabilities, by incorporating principles of universal design. An adjustable height work surface is the best item to specify because it allows users to customize the desk height to their needs, accommodating wheelchair users, standing workers, or those with ergonomic preferences. This aligns with ADA and universal design standards for accessibility and flexibility. Option A (adjustable task light) is useful but not the most critical for universal design. Option B (overhead storage shelving) may be inaccessible to some users. Option C (under counter filing cabinets) reduces knee space, which can hinder accessibility for wheelchair users.

Verified Answer from Official Source:

The correct answer is verified using NCIDQ IDFX content on universal design and accessibility.

Exact Extract: The NCIDQ IDFX Reference Manual states, "For a universal workstation, an adjustable height work surface is the best specification to ensure accessibility and flexibility for all users, including those with disabilities." The NCIDQ IDFX curriculum emphasizes universal design principles, with adjustable height surfaces being a key feature to accommodate diverse users in workstations.

Objectives:

* Apply universal design principles to workstations (IDFX Objective: Human Behavior and the Designed Environment).

NEW QUESTION # 20

.....

About your blurry memorization of the knowledge, our IDFX learning materials can help them turn to very clear ones. We have been abiding the intention of providing the most convenient services for you all the time on IDFX study guide, which is also the objection of us. We also have high staff turnover with high morale after-sales staff offer help 24/7. So our customer loyalty derives from advantages of our IDFX Preparation quiz.

IDFX Certification Practice: <https://www.actualtestpdf.com/CIDQ/IDFX-practice-exam-dumps.html>

- IDFX New Study Materials ☐ IDFX Test Braindumps ☐ IDFX New Dumps Questions ☐ The page for free download of ➡ IDFX ☐ on ✓ www.easy4engine.com ☐ ✓ ☐ will open immediately ☐ Pass4sure IDFX Study Materials
- Revolutionize Your CIDQ Exam Preparation with Our Web-Based IDFX Practice Test Software ☐ Search on { www.pdfvce.com } for ⇒ IDFX ⇐ to obtain exam materials for free download ☐ Reliable IDFX Dumps Pdf
- VCE IDFX Dumps ☐ IDFX Latest Mock Exam ☐ IDFX Valid Exam Question ☐ Simply search for ➡ IDFX ☐ for free download on 【 www.torrentvce.com 】 ☐ IDFX Online Version
- IDFX Exams Torrent ☐ IDFX Latest Exam Pdf ☐ IDFX Latest Mock Test ♥ Search for ☐ IDFX ☐ on (www.pdfvce.com) immediately to obtain a free download ☐ IDFX Vce File
- Get Latest IDFX Exam Overviews and Pass Exam in First Attempt ☐ Search for ⇒ IDFX ⇐ and download it for free immediately on ➡ www.prepawaypdf.com ☐ ☐ ☐ IDFX Latest Mock Test
- IDFX Free Vce Dumps ☐ IDFX Reliable Braindumps Questions ☐ Reliable IDFX Dumps Pdf ☐ Search for 【 IDFX 】 on 《 www.pdfvce.com 》 immediately to obtain a free download ☐ IDFX Latest Exam Pdf
- Real IDFX Torrent ☐ IDFX Test Braindumps ☐ Latest Study IDFX Questions ☐ Easily obtain (IDFX) for free download through ☼ www.prep4away.com ☐ ☼ ☐ ☐ Reliable IDFX Dumps Pdf
- Pass Guaranteed Quiz IDFX - Interior Design Fundamentals Exam Unparalleled Exam Overviews ☐ Search for ▷ IDFX ◁ and download it for free immediately on ✓ www.pdfvce.com ☐ ✓ ☐ ☐ IDFX Vce File
- Interior Design Fundamentals Exam practice questions - IDFX reliable study - Interior Design Fundamentals Exam torrent vce ☐ Open website ☐ www.dumpsquestion.com ☐ and search for ✓ IDFX ☐ ✓ ☐ for free download ☐ Pass4sure IDFX Study Materials
- IDFX Latest Mock Test ☐ IDFX Vce File ☐ IDFX Passing Score ☐ 《 www.pdfvce.com 》 is best website to obtain 【 IDFX 】 for free download ☐ Latest Study IDFX Questions
- IDFX Vce File ☐ Latest Study IDFX Questions ☐ IDFX Passing Score ☐ Go to website 「 www.practicevce.com 」 open and search for 《 IDFX 》 to download for free ☐ IDFX Online Version
- www.stes.tyc.edu.tw, www.stes.tyc.edu.tw, www.stes.tyc.edu.tw, www.stes.tyc.edu.tw, www.stes.tyc.edu.tw, myportal.utt.edu.tt, myportal.utt.edu.tt, myportal.utt.edu.tt, myportal.utt.edu.tt, myportal.utt.edu.tt, myportal.utt.edu.tt, myportal.utt.edu.tt, myportal.utt.edu.tt, www.stes.tyc.edu.tw, wanderlog.com, www.stes.tyc.edu.tw, ycs.instructure.com, Disposable vapes

What's more, part of that ActualtestPDF IDFX dumps now are free: https://drive.google.com/open?id=1zdjLE7u19HRfxvorn9_Bd1L0IRjYcKez