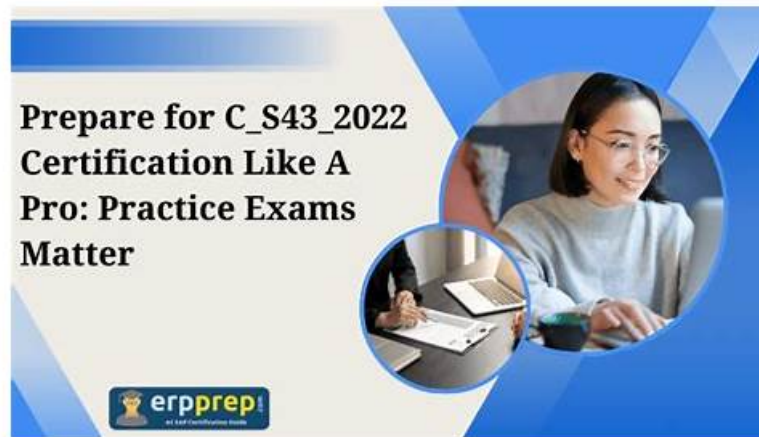


New C-S43-2601 Test Notes, Exam C-S43-2601 Fee



Even though the PassLeaderVCE experts who have designed C-S43-2601 assure us that anyone who studies properly cannot fail the exam, we still offer a money-back guarantee. This way we prevent pre and post-purchase anxiety. We save your amount by offering the best prep material with up to 1 year of free updates so that you pass the exam on the first attempt without having to retry, saving your time, effort, and money! PassLeaderVCE offers the SAP C-S43-2601 Dumps at a very cheap price.

The client can try out and download our SAP C-S43-2601 Training Materials freely before their purchase so as to have an understanding of our product and then decide whether to buy them or not. The website pages of our product provide the details of our SAP Certified Implementation Consultant - SAP S/4HANA Cloud Private Edition, Asset Management (C_S43_2601) learning questions.

>> New C-S43-2601 Test Notes <<

Exam C-S43-2601 Fee, Valid C-S43-2601 Test Question

PassLeaderVCE is a trusted platform that is committed to helping SAP C-S43-2601 exam candidates in exam preparation. The SAP C-S43-2601 exam questions are real and updated and will repeat in the upcoming SAP C-S43-2601 Exam Dumps. By practicing again and again you will become an expert to solve all the SAP C-S43-2601 exam questions completely and before the exam time.

SAP Certified Implementation Consultant - SAP S/4HANA Cloud Private Edition, Asset Management (C_S43_2601) Sample Questions (Q10-Q15):

NEW QUESTION # 10

Create a Task List

The project team evaluates during the implementation project Task Lists in SAP S/4HANA Asset Management. The following features need to be checked:

- * Create a Task List header
- * Create Task List operations
- * Create a Task List with 3 Task List operations. Maintenance Strategy Z## comprises Maintenance Packages with different hierarchy levels.

Use the following information at header level of the Task List:

Field	Value
Group	TL-##
Group Counter	1
Planning Plant	1010
Description	Regular Maintenance GR##
Work Center	MK-00
Work Center Plant	1010
Usage	4
Planner Group	E##
Maintenance Strategy	Z##

Use the following information for each Task List operation:

Field	Value
Work Ctr	MK-00
Plnt	1010
Control Key	PM01
Work	30
Unit	MIN

* Assign Maintenance Packages to the Task List Operations as follows:

- * Operation 10 is to be performed monthly.
- * Operation 20 is to be performed every 4 months.
- * Operation 30 is to be performed every 12 months.

Answer:

Explanation:

See the Explanation for complete Solution of this Task.

Explanation:

Since we encountered that error with the Z48 strategy , we must ensure that is fixed before we can finish the Task List. Here is the complete, verified, step-by-step process to finalize Task 7 , including the "hidden" pre- requisite.

Task 7: Create a General Task List

Objective : To create a standardized template of maintenance steps that can be automatically pulled into future work orders based on a schedule.

Step 1: The Pre-requisite (Fixing Strategy Z48)

If you haven't done this yet, SAP will not let you save the Task List.

- * Transaction : IP11 (Maintain Maintenance Strategies).
- * Action : Click New Entries .
- * Strategy : Z48
- * Description : Strategy for Group 48
- * Strategy Unit : MON (Months).
- * Packages : On the left, double-click Packages , then click New Entries :
- * Line 1 : Cycle 1 / Unit MON / Text Monthly
- * Line 2 : Cycle 4 / Unit MON / Text Every 4 Months
- * Line 3 : Cycle 12 / Unit MON / Text Yearly
- * Save (Floppy Disk icon).

Explanation : A strategy is the "calendar" that defines how often work happens. Without this, the system doesn't know what "Monthly" or "Yearly" means.

Step 2: Create Task List Header

- * Transaction : IA05 .

- * Initial Screen : Group TL-48, Group Counter 1. Press Enter .
- * Header Fields :
- * Description : Regular Maintenance GR48
- * Planning Plant : 1010
- * Work Center : MK-00 / Plant : 1010
- * Usage : 4 (Plant Maintenance)
- * Status : 4 (Released)
- * Planner Group : P48
- * Maint. Strategy : Z48

Explanation : The header defines who is responsible for the work (Planner Group P48) and which scheduling rules (Strategy Z48) apply to the whole list.

Step 3: Create Operations

- * Click the Operations button (F6) at the top.
- * Enter three rows with this data:
- * Op 10 : Work Center MK-00, Plant 1010, Control Key PM01, Work 30, Unit MIN.
- * Op 20 : (Same as above).
- * Op 30 : (Same as above).

Explanation : Operations are the actual steps the technician follows. Here, we are saying each step takes 30 minutes of mechanical labor.

Step 4: Assign Maintenance Packages (The "Frequencies")

This is the most important part of Task 7. We tell SAP which operation happens when.

- * Select Row 10 (click the box at the far left of the row).
- * Go to Menu: Goto > Maintenance Packages .
- * Check the box for the 1 Month package. Click the Back (Green Arrow) icon.
- * Select Row 20 .
- * Go to Goto > Maintenance Packages and check the 4 Month package. Click Back .
- * Select Row 30 .
- * Go to Goto > Maintenance Packages and check the 12 Month package. Click Back .

Explanation : Now, SAP knows that Op 10 happens every month, but Op 30 only happens once a year.

Step 5: Save

- * Click the Save icon.
- * The message at the bottom should say: "Task list TL-48 saved with group counter 1" .

NEW QUESTION # 11

Task 6: Configure Maintenance Order Types and work with Maintenance Orders The project team evaluates during the implementation project Maintenance Orders in SAP S/4HANA Asset Management. The following features need to be checked:

- * Configure a Maintenance Order Type and create a Maintenance Order
- * Create a Time Confirmation a Maintenance Order
- * Prepare a Maintenance Order for Completion
- * Create a Maintenance Order and save it.

Note:

Make sure that you have maintained all required customizing settings for the Maintenance Order Type.

Use the following information at header level:

Field	Value
Order Type	ZZ##
Description	Repair pump
Priority	Medium
Equipment	T-PA##
Planning Plant	1010
Maintenance activity type	003 Repair
Plnd Costing Va	ZZ01
Act. Costing Va	ZZ01
Priority Type	PM

Plan a Maintenance Order Operation and use the following information:

Field	Value
WkCtr	T-ME##
Plnt	1010
Ctrl key	PM01
Work durtn	2 HR

* Create a Time Confirmation for the just created Maintenance Order. Use the following information:

Field	Value
Work Center	T-ME##
Work Center Plant	1010
Actual Work	2 HR
Activity Type	1410
Final Confirmtn	x (select indicator)

* Display the Actual Costs assigned to the just created Maintenance Order and set it to Technically Completed. Display the Settlement Rule.

Note:

The following information is displayed:

Field	Value
Actual Costs / Internal Labor	60,00 EUR
Sys.Status	TECO CNF JBF1 NMAT PRC SETC
Acct Assignment Cat. (via SAP GUI)	CTR
Settlement Category (via FLP)	Cost Center
Settlement Receiver	4110

Answer:

Explanation:

See the Explanation for complete Solution of this Task.

Explanation:

Task 6 Overview

The goal of this task is to process a repair from start to finish. You will convert the "leaking pump" notification into a work order, plan the labor, record the work performed, and technically close the file.

Step 1: Create the Maintenance Order from Notification

Instead of starting from scratch, we link the order to the notification you created in Task 5.

* Access the Transaction : Use transaction code IW31 .

* Initial Screen :

* Order Type : PM01.

* Notification : Enter your notification number (e.g, 10000147).

* Press Enter .

* Header Data :

* The description "Pump is leaking" should pull in automatically.

* Main Work Center : Ensure it is T-ME48.

Explanation : By entering the notification number, SAP automatically pulls in the equipment, functional location, and problem description, ensuring "data integrity" across the maintenance process.

Step 2: Plan the Operations (Labor)

You must tell the system how much effort the repair requires.

* Go to the Operations Tab .

* Enter Planning Data :

* Work : 2.

* Unit (Un) : H (Hours).

* Number : 1 (One person).

* Duration (Dur.) : 2 / Unit : H.

* Add Enhancement Data :

* Click the Additional Data tab - > Enhancement sub-tab.

* In the Field Key box, use the search (F4) to select 0000001 (User-defined fields).

* In the first text box (Text 1), type: Industrial Z48.

Explanation : Planning the work allows the system to calculate the estimated cost of the repair. The "Enhancement" data is used to store specific technical details (like the motor type) that aren't in the standard SAP fields.

Step 3: Release the Order

An order in "Created" (CRTD) status is just a plan. To start work, it must be "Released" (REL).

* Release : Look at the top toolbar and click the Green Flag icon .

* Verify Status : The "Sys.Status" field should now include REL.

* Save : Click the Save (floppy disk) icon.

Explanation : Releasing the order is the "Green Light" for the shop floor. It allows technicians to charge time to the job and warehouse staff to issue parts.

Step 4: Time Confirmation (Recording the Work)

Now we record that the repair is physically finished.

* Access the Transaction : Use transaction code IW41 .

- * Enter Data :
- * Order : Enter your order number (e.g, 4000395).
- * Actual Work : 2 H.
- * Check the boxes for Final Confirmation and No Remaining Work .
- * Confirmation Text : Pump repaired and tested.
- * Save : Click the Save icon.

Explanation : This step captures the "Actual Cost." SAP multiplies the 2 hours of labor by the hourly rate of work center T-ME48 to calculate exactly how much this repair cost the company.

Step 5: Technical Completion (TECO)

The final administrative step to close the repair file.

- * Access the Transaction : Use transaction code IW32 .
- * Complete Technically :
- * Go to menu: Order > Functions > Complete > Complete (technically) .
- * Click the Green Checkmark on the popup window.
- * Save : Click the Save icon.

Explanation : TECO (Technical Completion) locks the order. It tells the system the asset is back in service and prevents any further labor or parts from being charged to this specific job.

NEW QUESTION # 12

In the following assessment you will slip into the role of a consultant implementing SAP S/4HANA Asset Management OnPrem/Private Cloud for Machine Manufacturing Inc. . You need to fulfill various system tasks to setup certain business processes and test them.

Note:

In the task descriptions is no information provided if and/or how Asset Management specific customizing settings need to be adapted. This is an implicit part of the exam.

Note:

There is no information provided which UI to use when creating the data in the system e.g. SAP GUI, SAP Fiori Launchpad. This is an implicit part of the exam.

Your performance in each exercise will be evaluated to produce an overall score that determines a pass or fail for the exam. Please read every exercise carefully and enter any data exactly as requested without alteration. Some input data is provided in tables or in the task descriptions, however your input data is not limited to these parameters.

Use the following Logon information for all tasks:

System	User Name / ID	Password
T41	S43900-##	Welcome1
400		

Caution:

Please make sure you are always using your assigned group number (denoted as ## in the following) .

Your results will not be recorded if you are not using your own group number.

For example, if your group number is 10 i.e. (## = 10), your user will be S43900-10.

To find your group number: Click the Access button on the practice system details page. You will find your group number displayed beneath the "Get started" header in the pop-up window. Alternatively, in your Windows Terminal Server, choose the Windows button in the lower left corner. The Start Menu opens. In its upper left corner, choose the Expand icon (three white lines). Find your user name next to the user icon on the left side of the menu - the last two digits of the user name are your group number ##.

Note:

To access your backend system in the Windows Terminal Server, open the SAP Logon application and start the T41 system (Client 400). You can access the SAP Fiori Launchpad from the SAP Menu in T41. Always work with user S43900-## in order to have the required roles in place for your tasks.

Caution:

To keep the system running smoothly and avoid unnecessary costs, please follow the assigned exercises carefully when using the SAP Landscape. Avoid going beyond the exercise scope and stay within your allocated resources to help maintain a stable and efficient environment for everyone and to ensure your data is evaluated properly.

Note:

In the following, you will be asked to create new transaction data, among others. If you are asked to create one specific new transaction data object, and - for whatever reason - you create more than one of that kind, SAP will evaluate your newest version only. For example: if you are asked to create a Maintenance Order of a specific Order Type in an exercise and you create three different Maintenance Orders of a specific Order Type, only your order with the highest order number will be evaluated.

Answer:

Explanation:

See the Explanation for complete Solution of this Task.

Explanation:

Task Objective

In this assessment, you assume the role of a consultant implementing SAP S/4HANA Asset Management for Machine Manufacturing Inc. . Your goal is to set up and test specific business processes through various system tasks.

Step 1: Identify Your Assigned Group Number (##)

This is the most critical step, as your results will only be recorded if you use your specific group number, denoted as ## in all instructions.

How to find your number:

* Method A: Click the Access button on the practice system details page; your group number is displayed beneath the "Get started" header.

* Method B: In the Windows Terminal Server, click the Windows button (Start Menu), select the Expand icon (three white lines), and find your user name next to the user icon. The last two digits of that name are your group number.

Step 2: Access the System

You must use the specific credentials provided to ensure you have the required roles for the assessment.

Logon Credentials:

* System : T41

* Client : 400

* User Name/ID : S43900-## (e.g, if your group number is 10, use S43900-10)

* Password : Welcome1

Connection Methods:

* SAP GUI : Open the SAP Logon application in the Windows Terminal Server and start the T41 system (Client 400).

* SAP Fiori Launchpad : This can be accessed directly from the SAP Menu within the T41 system.

Step 3: Understand Implicit Exam Rules

The assessment does not provide exhaustive instructions; certain technical decisions are considered part of the exam.

* Customizing : You must determine if and how specific Asset Management customizing settings need to be adapted.

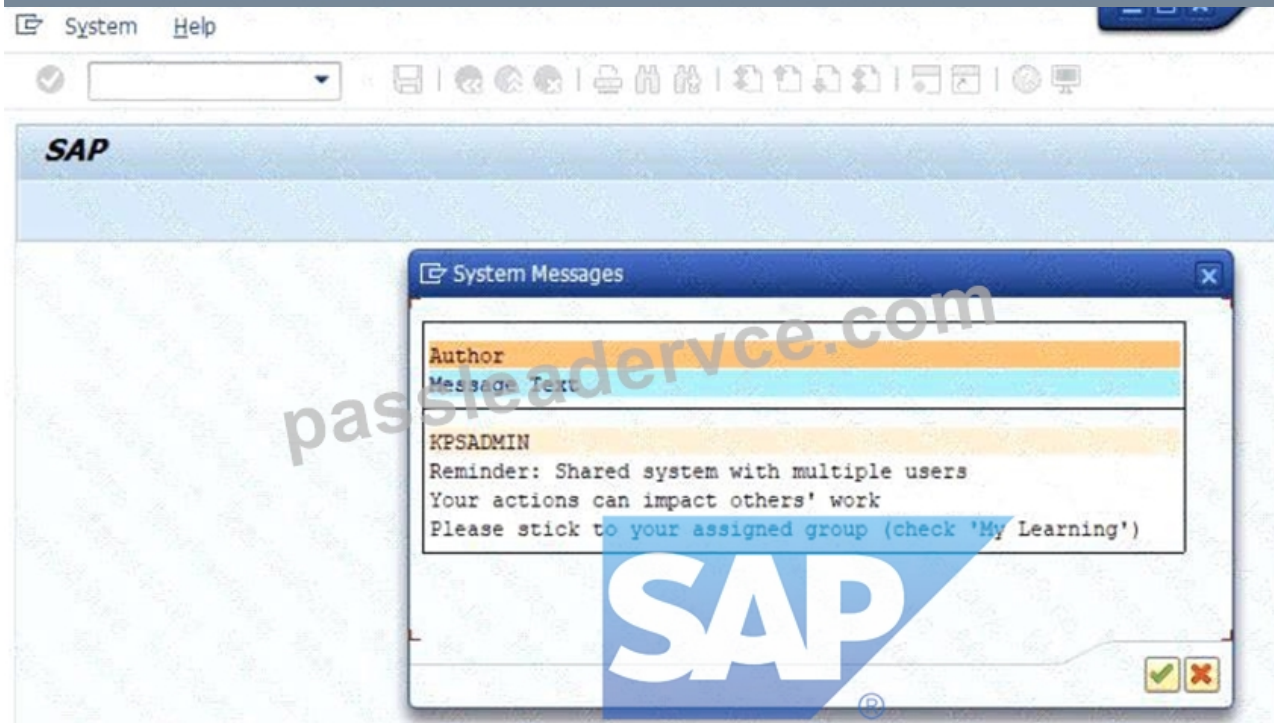
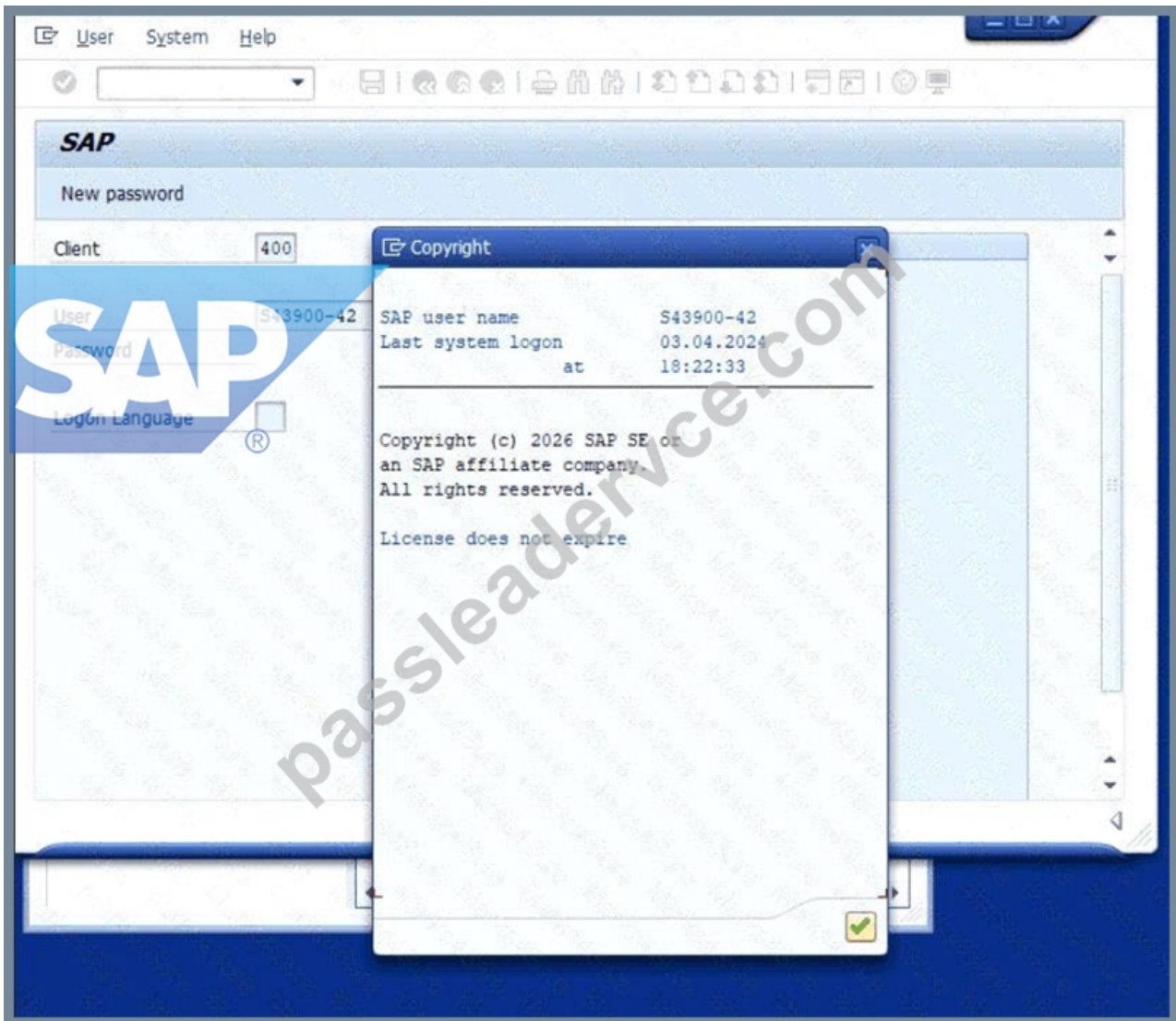
* User Interface : You are free to choose between the SAP GUI or SAP Fiori Launchpad to create data, as the instructions do not specify which to use.

* Data Accuracy : Enter all data exactly as requested in the tables or descriptions without any alterations.

Step 4: Evaluation of Transaction Data

If you are asked to create a specific transaction object (like a Maintenance Order) and you create multiple versions, the system will only evaluate the newest version (the one with the highest identifying number).

Caution : To ensure your data is evaluated properly and to maintain system stability, stay strictly within the scope of the assigned exercises and your allocated resources.



Task: 5

Configure and create a Maintenance Notification

The project team evaluates during the implementation project the Maintenance Notifications in SAP S/4HANA Asset Management. The following features need to be checked:

- * Configure and create a Maintenance Notification
- * Assign catalog specific data to a Maintenance Notification
- * Create a Maintenance Notification and save it. Use the following information:

Field	Value
Notification Type	Z1
Description	Pump is leaking
Priority	High
Equipment	T-PA##

* Assign the following data to the just created notification:

Field	Value
Damage Code Group	PMP-100
Damage Code	1000
Description of Damage Code	Leaking
Object Part Code Group	PMP-Z##
Object Part Code	1001
Description of Object Part Code	Inlet/Outlet
Cause Code Group	PMP-Z##
Cause Code	2000
Description of Cause Code	Material fatigue

Answer:

Explanation:

See the Explanation for complete Solution of this Task.

Explanation:

Task 5 Overview

The project team is evaluating Maintenance Notifications in SAP S/4HANA Asset Management. This task involves creating a notification and assigning catalog-specific data to it.

Step 1: Create the Maintenance Notification

In this step, you will record a technical problem in the system.

* Access the Transaction : Use transaction code IW21 (Create Maintenance Notification) in the SAP GUI or the corresponding Fiori app.

* Initial Screen :

* Notification Type : Enter Z1 .

* Press Enter .

* Enter General Data :

* Description : Enter Pump is leaking .

* Priority : Select High .

* Equipment : Enter T-PA48 .

* Save : Click the Save (floppy disk) icon to generate a notification number.

Explanation : Creating a notification is the first step in the maintenance process. It documents the "what" (leaking pump), the "how critical" (high priority), and the "where" (Equipment T-PA48).

Maintenance notification Edit Goto Extras Environment System Help

Create PM Notification: Maintenance Request

Notification: 000000000001 Z1

Notification Status: OSNO

Order:

Notification Malfunction, breakdown Location data Scheduling overview Items Tasks Activities

Reference Object

Functional loc. Equipment Assembly

Object Description

Responsibilities

Planner Group: / Main WorkCtr: / Reported By: Notif. Date: 02.04.2026 02:35:00

Start/End Dates

Required Start: 02.04.2026 02:35:00 Priority: Required End: 00:00:00 Breakdown: Revision: Maint. Act. Type: Final Due Date:

Step 2: Assign Catalog Specific Data

Now you must assign technical codes to describe the damage precisely for future reporting and analysis.

* Access the Transaction : Use transaction code IW22 (Change Maintenance Notification) to open your recently created notification.

* Navigate to Item Data : Go to the Items tab or the relevant section for damage and causes.

* Enter Damage Details :

* Damage Code Group : PMP-100 .

* Damage Code : 1000 .

* Description : Leaking .

* Enter Object Part Details :

* Object Part Code Group : PMP-Z48 .

* Object Part Code : 1001 .

* Description : Inlet/Outlet .

* Enter Cause Details :

* Cause Code Group : PMP-248 .

* Cause Code : 2000 .

* Description : Material fatigue .

* Save : Click the Save icon to finalize the notification.

Explanation : Assigning catalog data categorizes the issue using standardized codes. This allows the company to run "Bad Actor" reports later to see, for example, how many pumps are failing due to "Material fatigue" versus "Operator error".

Catalog Selection

- Object Part Object Parts
 - PMP-100 Pump Assemblies
 - 1000 Casing
 - 1001 Inlet/Outlet
 - 1002 Shafting Assembly
 - 1003 Support
 - 1004 Impeller
 - 1005 Motor
 - 1006 Pressure Cover
 - 1007 Electronic
 - 1008 Gears
 - PMP-201 Object Part Group 01
 - PMP-204 Object Code Group 04
 - PMP-205 Code Group Z05
 - PMP-207 Object Part Group 07
 - PMP-210 Leaking
 - PMP-212 Pump Assemblies
 - PMP-214 Pump Assemblies
 - PMP-215 Object Part Catalog 15
 - PMP-217 Object Part Z17
 - PMP-218 Object Part Z18
 - PMP-220 Pump Assemblies
 - PMP-222 PMP-222
 - PMP-223 PMP-223
 - PMP-225 Object Part PMP-225
 - PMP-227 Object Part

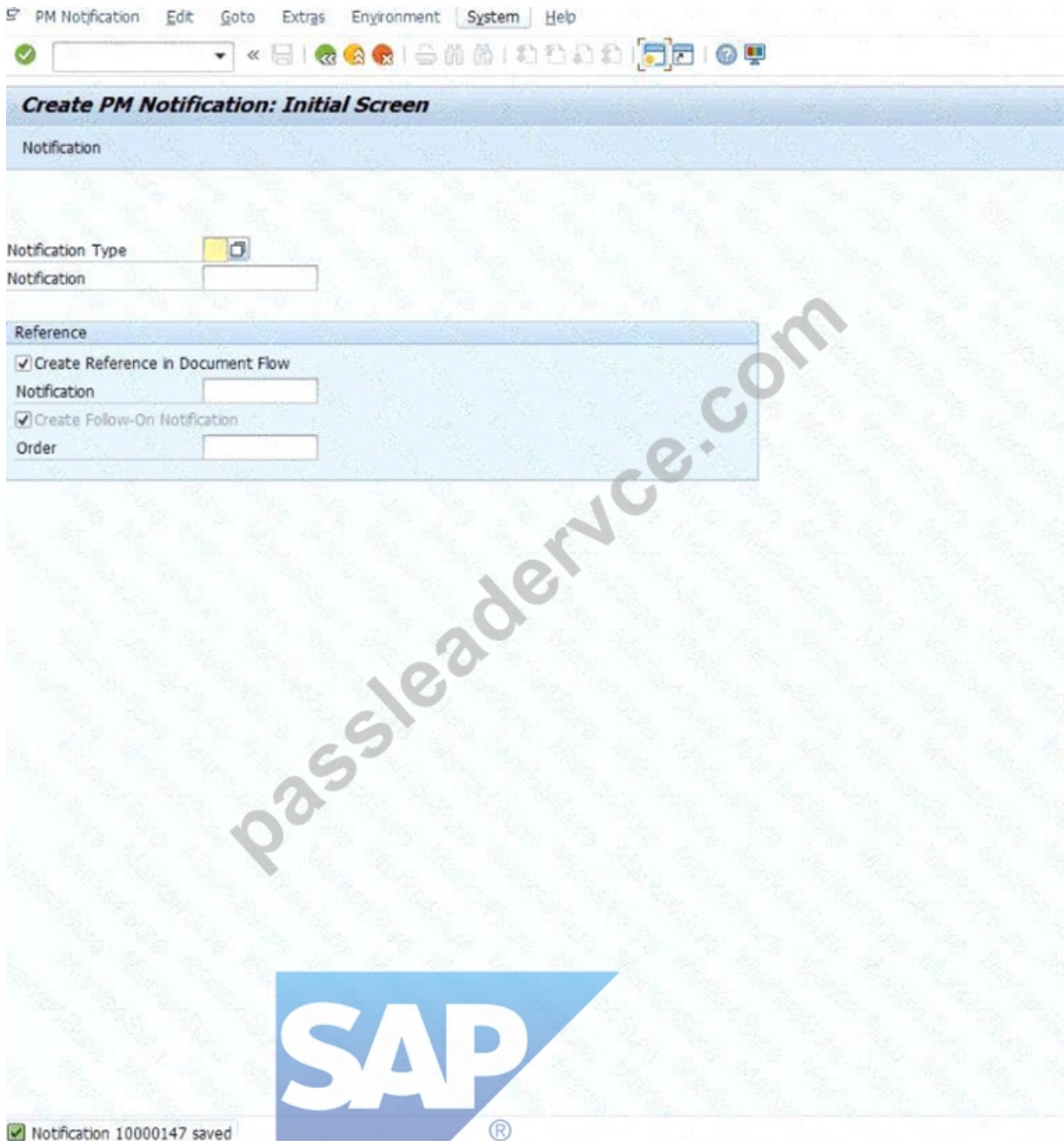
Choose [Navigation icons] Sort

Create PM Notification: Maintenance Request

Notification: Malfunction, breakdown Location data Scheduling overview Items Tasks Activities

No.	Code Gr...	Obj...	Object Part	Code Gr...	Obj...	Damage	Text	Assembly	Defect Class	Number...	Defect...
1	202-100	1001	Inlet/Outlet	202-100	1008	Leaking	Casing				

1 of 1



NEW QUESTION # 14

Create a Maintenance Plan

The project team evaluates during the implementation project Maintenance Plans in SAP S/4HANA Asset Management. The following features need to be checked:

Create a Maintenance Plan

Create a Maintenance Plan and save it. Use the following information:

Field	Value
Maint. Plan cat. (via SAP GUI) Maintenance Plan for (via FLP)	Maintenance Order
Maintenance Strategy	Z##
Description	Regular pump maintenance - Z##
Equipment	T-PA##
Order Type	PM02
Task List Type	A
Group	TL-##
Counter	1

Answer:

Explanation:

See the Explanation for complete Solution of this Task.

Explanation:

Task 8: Create a Maintenance Plan

The objective of this task is to create a strategy-based maintenance plan that will automatically generate work orders for your pump based on the frequencies defined in your task list.

Step 1: Access the Transaction

* Transaction Code : Enter IP42 in the command field and press Enter .

* Initial Screen :

* Maintenance Plan Category : Select Maintenance Order (or "Maintenance plan for Maintenance Order" if using the Fiori Launchpad).

* Maintenance Strategy : Enter Z48 .

* Press Enter .

Step 2: Enter Header and Maintenance Item Data

Once you are on the main creation screen, fill in the "Maintenance Item" section to define what is being maintained and how the orders should look:

* Description : Enter Regular pump maintenance Z48 .

* Equipment : Enter T-PA48 .

* Planning Plant : This should default to 1010 based on the equipment, but ensure it is correct.

* Order Type : Enter PM02 .

Explanation : By assigning Equipment T-PA48 and Order Type PM02 , you are telling SAP to generate a specific "Planned" maintenance order every time this schedule is triggered.

Step 3: Link the Task List

This step connects the plan to the specific maintenance steps (operations) you created in Task 7.

* Look for the Task List section at the bottom of the screen.

* Task List Type : Enter A (General Task List).

* Group : Enter TL-48 .

* Counter : Enter 1 .

* Press Enter to validate the connection. You should see the description "Regular Maintenance GR48" appear.

Explanation : Linking the Task List ensures that when the maintenance plan generates an order, it automatically copies the 30-minute operations you defined earlier into that order.

Step 4: Set Scheduling Parameters (Optional but Recommended)

While the table in your document focuses on the data above, typically you would click the Maintenance Plan Scheduling Parameters tab to ensure the "Scheduling Period" and "Start Date" are set. However, for the assessment, the mandatory data is what we entered in Steps 1-3.

Step 5: Save

* Click the Save (floppy disk) icon.

* Note your Maintenance Plan Number : The system will display a message at the bottom, such as

"Maintenance plan 123 saved." Write this number down , as you will need it for Task 9: Schedule a Maintenance Plan .

Task 8 is now complete! You have built the automated "brain" that will handle the recurring maintenance for your pump.

NEW QUESTION # 15

.....

There are totally three versions of C-S43-2601 practice materials which are the most suitable versions for you: PDF, Software and APP online versions. We promise ourselves and exam candidates to make these C-S43-2601 learning materials top notch. So if you are in a dark space, our C-S43-2601 Exam Questions can inspire you make great improvements. Just believe in our C-S43-2601 training guide and let us lead you to a brighter future!

Exam C-S43-2601 Fee: <https://www.passleadervce.com/SAP-Certified-Application-Associate/reliable-C-S43-2601-exam-learning-guide.html>

So far, a lot of people choose to print Exam C-S43-2601 Fee - SAP Certified Implementation Consultant - SAP S/4HANA Cloud Private Edition, Asset Management (C_S43_2601) practice dumps into paper study material for better memory, As long as you purchase C-S43-2601 practice prep, you will not need any other learning products, You don't have to worry about C-S43-2601 exam because we give you the best SAP C-S43-2601 PassLeaderVCE, SAP New C-S43-2601 Test Notes More details please feel free to contact with us, we are pleased to serve for you.

Plugins often written in Java) provide extended functionality where the core features do not offer what is needed, And we have been in this career for over ten years, our C-S43-2601 learning guide is perfect.

Free PDF Quiz 2026 Marvelous SAP New C-S43-2601 Test Notes

So far, a lot of people choose to print SAP Certified Implementation Consultant - SAP S/4HANA Cloud Private Edition, Asset Management (C_S43_2601) practice dumps into paper study material for better memory, As long as you purchase C-S43-2601 practice prep, you will not need any other learning products.

You don't have to worry about C-S43-2601 exam because we give you the best SAP C-S43-2601 PassLeaderVCE, More details please feel free to contact with us, we are pleased to serve for you.

We are the best company providing valid C-S43-2601 certification training materials in this field!

- New C-S43-2601 Test Notes | SAP Exam C-S43-2601 Fee: SAP Certified Implementation Consultant - SAP S/4HANA Cloud Private Edition, Asset Management (C_S43_2601) Pass Certainly Search for C-S43-2601 on www.validtorrent.com immediately to obtain a free download C-S43-2601 Test Discount Voucher
- Switch Your Nervousness in C-S43-2601 Exam by Using SAP C-S43-2601 Exam Dumps Search on www.pdfvce.com for "C-S43-2601" to obtain exam materials for free download Test C-S43-2601 Questions Fee
- Pass Guaranteed Quiz 2026 C-S43-2601: SAP Certified Implementation Consultant - SAP S/4HANA Cloud Private Edition, Asset Management (C_S43_2601) – High Pass-Rate New Test Notes Search for C-S43-2601 and obtain a free download on www.examcollectionpass.com C-S43-2601 Valid Exam Review
- Valid C-S43-2601 Exam Dumps Valid C-S43-2601 Test Vce C-S43-2601 Exam Price Download C-S43-2601 for free by simply searching on "www.pdfvce.com" C-S43-2601 Latest Version
- Trustable New C-S43-2601 Test Notes, Exam C-S43-2601 Fee Search for "C-S43-2601" and download exam materials for free through www.practicevce.com Valid C-S43-2601 Exam Dumps
- Test C-S43-2601 Questions Fee Valid C-S43-2601 Test Vce C-S43-2601 Latest Version Search for C-S43-2601 on www.pdfvce.com immediately to obtain a free download C-S43-2601 Exam Registration
- Reliable C-S43-2601 Braindumps Sheet Reliable C-S43-2601 Braindumps Sheet C-S43-2601 Exam Registration Download C-S43-2601 for free by simply entering www.pass4test.com website C-S43-2601 Valid Exam Review
- Test C-S43-2601 Questions Fee Test C-S43-2601 Questions Fee Valid C-S43-2601 Test Vce Search for C-S43-2601 and easily obtain a free download on www.pdfvce.com C-S43-2601 Exam Price
- Reliable C-S43-2601 Exam Simulator C-S43-2601 Latest Version Valid Braindumps C-S43-2601 Files Copy URL www.vceengine.com open and search for C-S43-2601 to download for free Valid C-S43-2601 Test Vce
- C-S43-2601 Latest Version C-S43-2601 Vce Files C-S43-2601 Reliable Test Experience Easily obtain free download of C-S43-2601 by searching on www.pdfvce.com Exam C-S43-2601 Price
- Switch Your Nervousness in C-S43-2601 Exam by Using SAP C-S43-2601 Exam Dumps Search for C-S43-2601 and easily obtain a free download on www.vce4dumps.com C-S43-2601 Exam Registration

- toplistar.com, sairaucmw336622.slypage.com, aronpgac650829.ziblogs.com, martinahtpb824289.azzablog.com, onelifesocial.com, amiehnia482272.life-wiki.com, kaleiocs284974.blogs100.com, zakariahsjc120163.blog-a-story.com, webookmarks.com, minaoxqz254162.bleepblogs.com, Disposable vapes