

# Quiz 2026 C\_S43: SAP Certified Implementation Consultant - SAP S/4HANA Cloud Private Edition, Asset Management (C\_S43\_2601)–Valid Testing Center



You may feel astonished and doubtful about this figure; but we do make our C\_S43 exam dumps well received by most customers. Better still, the 98-99% pass rate has helped most of the candidates get the certification successfully, which is far beyond that of others in this field. In recent years, supported by our professional expert team, our C\_S43 test braindumps have grown up and have made huge progress. We pay emphasis on variety of situations and adopt corresponding methods to deal with. More successful cases of passing the C\_S43 Exam can be found and can prove our powerful strength. As a matter of fact, since the establishment, we have won wonderful feedback and ceaseless business, continuously working on developing our C\_S43 test prep. We have been specializing C\_S43 exam dumps many years and have a great deal of long-term old clients, and we would like to be a reliable cooperator on your learning path and in your further development.

Exam4Docs is an excellent platform where you get relevant, credible, and unique SAP C\_S43 exam dumps designed according to the specified pattern, material, and format as suggested by the SAP C\_S43 exam. To make the SAP C\_S43 Exam Questions content up-to-date for free of cost up to 1 year after buying them, our certified trainers work strenuously to formulate the exam questions in compliance with the SAP Certified Implementation Consultant - SAP S/4HANA Cloud Private Edition, Asset Management (C\_S43\_2601) (C\_S43) dumps.

>> Testing C\_S43 Center <<

## C\_S43 Customized Lab Simulation & C\_S43 Latest Exam

As everybody knows, competitions appear ubiquitously in current society. In order to live a better life, people improve themselves by furthering their study, as well as increase their professional C\_S43 skills. With so many methods can boost individual competitiveness, people may be confused, which can really bring them a glamorous work or brighter future? We are here to tell you that a C\_S43 Certification definitively has everything to gain and nothing to lose for everyone.

## SAP Certified Implementation Consultant - SAP S/4HANA Cloud Private Edition, Asset Management (C\_S43\_2601) Sample Questions (Q10-Q15):

## NEW QUESTION # 10

In the following assessment you will slip into the role of a consultant implementing SAP S/4HANA Asset Management OnPrem/Private Cloud for Machine Manufacturing Inc. . You need to fulfill various system tasks to setup certain business processes and test them.

Note:

In the task descriptions is no information provided if and/or how Asset Management specific customizing settings need to be adapted. This is an implicit part of the exam.

Note:

There is no information provided which UI to use when creating the data in the system e.g. SAP GUI, SAP Fiori Launchpad. This is an implicit part of the exam.

Your performance in each exercise will be evaluated to produce an overall score that determines a pass or fail for the exam. Please read every exercise carefully and enter any data exactly as requested without alteration. Some input data is provided in tables or in the task descriptions, however your input data is not limited to these parameters.

Use the following Logon information for all tasks:

System	User Name / ID	password
T41	S43900-##	Welcome1
400		

Caution:

Please make sure you are always using your assigned group number (denoted as ## in the following) .

Your results will not be recorded if you are not using your own group number.

For example, if your group number is 10 i.e. (## = 10), your user will be S43900-10.

To find your group number: Click the Access button on the practice system details page. You will find your group number displayed beneath the "Get started" header in the pop-up window. Alternatively, in your Windows Terminal Server, choose the Windows button in the lower left corner. The Start Menu opens. In its upper left corner, choose the Expand icon (three white lines). Find your user name next to the user icon on the left side of the menu - the last two digits of the user name are your group number ##.

Note:

To access your backend system in the Windows Terminal Server, open the SAP Logon application and start the T41 system (Client 400 ). You can access the SAP Fiori Launchpad from the SAP Menu in T41. Always work with user S43900-## in order to have the required roles in place for your tasks.

Caution:

To keep the system running smoothly and avoid unnecessary costs, please follow the assigned exercises carefully when using the SAP Landscape. Avoid going beyond the exercise scope and stay within your allocated resources to help maintain a stable and efficient environment for everyone and to ensure your data is evaluated properly.

Note:

In the following, you will be asked to create new transaction data, among others. If you are asked to create one specific new transaction data object, and - for whatever reason - you create more than one of that kind, SAP will evaluate your newest version only. For example: if you are asked to create a Maintenance Order of a specific Order Type in an exercise and you create three different Maintenance Orders of a specific Order Type, only your order with the highest order number will be evaluated.

## Answer:

Explanation:

See the Explanation for complete Solution of this Task.

Explanation:

Task Objective

In this assessment, you assume the role of a consultant implementing SAP S/4HANA Asset Management for Machine Manufacturing Inc. . Your goal is to set up and test specific business processes through various system tasks.

Step 1: Identify Your Assigned Group Number (##)

This is the most critical step, as your results will only be recorded if you use your specific group number, denoted as ## in all instructions.

How to find your number:

\* Method A: Click the Access button on the practice system details page; your group number is displayed beneath the "Get started" header.

\* Method B: In the Windows Terminal Server, click the Windows button (Start Menu), select the Expand icon (three white lines), and find your user name next to the user icon. The last two digits of that name are your group number.

Step 2: Access the System

You must use the specific credentials provided to ensure you have the required roles for the assessment.

Logon Credentials:

- \* System : T41
- \* Client : 400
- \* User Name/ID : S43900-## (e.g., if your group number is 10, use S43900-10)
- \* Password : Welcome1

Connection Methods:

- \* SAP GUI : Open the SAP Logon application in the Windows Terminal Server and start the T41 system (Client 400).
- \* SAP Fiori Launchpad : This can be accessed directly from the SAP Menu within the T41 system.

Step 3: Understand Implicit Exam Rules

The assessment does not provide exhaustive instructions; certain technical decisions are considered part of the exam.

\* Customizing : You must determine if and how specific Asset Management customizing settings need to be adapted.

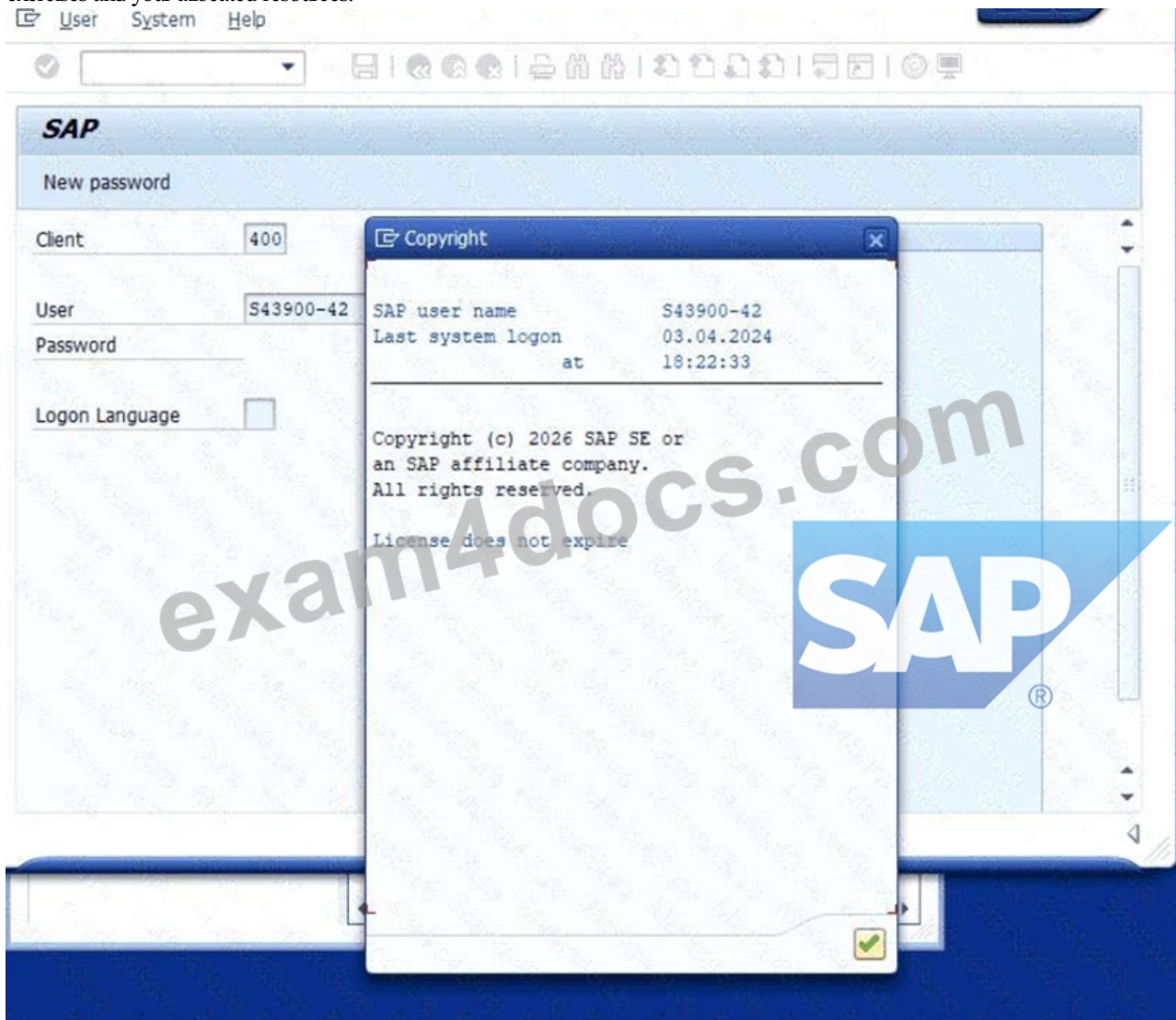
\* User Interface : You are free to choose between the SAP GUI or SAP Fiori Launchpad to create data, as the instructions do not specify which to use.

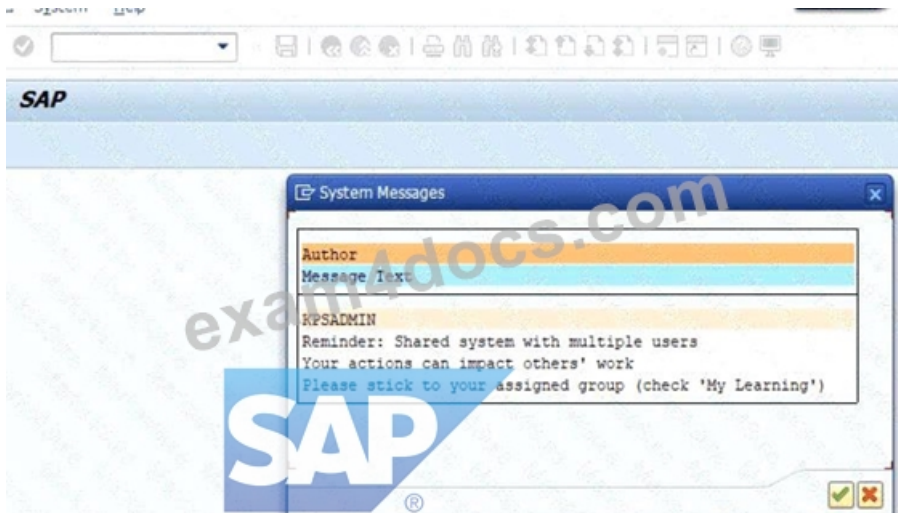
\* Data Accuracy : Enter all data exactly as requested in the tables or descriptions without any alterations.

Step 4: Evaluation of Transaction Data

If you are asked to create a specific transaction object (like a Maintenance Order) and you create multiple versions, the system will only evaluate the newest version (the one with the highest identifying number).

Caution : To ensure your data is evaluated properly and to maintain system stability, stay strictly within the scope of the assigned exercises and your allocated resources.





**NEW QUESTION # 11**

Task: 5

Configure and create a Maintenance Notification

The project team evaluates during the implementation project the Maintenance Notifications in SAP S/4HANA Asset Management. The following features need to be checked:

- \* Configure and create a Maintenance Notification
- \* Assign catalog specific data to a Maintenance Notification
- \* Create a Maintenance Notification and save it. Use the following information:

Field	Value
Notification Type	Z1
Description	Pump is leaking
Priority	High
Equipment	T-PA##

\* Assign the following data to the just created notification:

Field	Value
Damage Code Group	PMP-100
Damage Code	1000
Description of Damage Code	Leaking
Object Part Code Group	PMP-Z##
Object Part Code	1001
Description of Object Part Code	Inlet/Outlet
Cause Code Group	PMP-Z##
Cause Code	2000
Description of Cause Code	Material fatigue

**Answer:**

Explanation:

See the Explanation for complete Solution of this Task.

Explanation:

Task 5 Overview

The project team is evaluating Maintenance Notifications in SAP S/4HANA Asset Management. This task involves creating a notification and assigning catalog-specific data to it.

Step 1: Create the Maintenance Notification

In this step, you will record a technical problem in the system.

\* Access the Transaction : Use transaction code IW21 (Create Maintenance Notification) in the SAP GUI or the corresponding Fiori app.

\* Initial Screen :

\* Notification Type : Enter Z1 .

\* Press Enter .

\* Enter General Data :

\* Description : Enter Pump is leaking .

\* Priority : Select High .

\* Equipment : Enter T-PA48 .

\* Save : Click the Save (floppy disk) icon to generate a notification number.

Explanation : Creating a notification is the first step in the maintenance process. It documents the "what" (leaking pump), the "how critical" (high priority), and the "where" (Equipment T-PA48).

The screenshot displays the SAP 'Create PM Notification: Maintenance Request' screen. The interface is divided into several sections. At the top, there are navigation icons and a search bar. Below that, the 'Notification' field is set to '100000000001 Z1'. The 'Status' is 'OSNO'. The 'Reference Object' section includes fields for 'Functional loc.', 'Equipment', and 'Assembly'. The 'Subject' section has a large text area with a 'SAP' watermark. The 'Responsibilities' section includes 'Planner Group', 'Main WorkCtr', and 'Reported By'. The 'Start/End Dates' section shows 'Required Start' as '02.04.2026 02:35:00' and 'Required End' as '00:00:00'. The 'Revision' and 'Maint.Act.Type' fields are also visible.

Step 2: Assign Catalog Specific Data

Now you must assign technical codes to describe the damage precisely for future reporting and analysis.

\* Access the Transaction : Use transaction code IW22 (Change Maintenance Notification) to open your recently created notification.

\* Navigate to Item Data : Go to the Items tab or the relevant section for damage and causes.

\* Enter Damage Details :

\* Damage Code Group : PMP-100 .

\* Damage Code : 1000 .

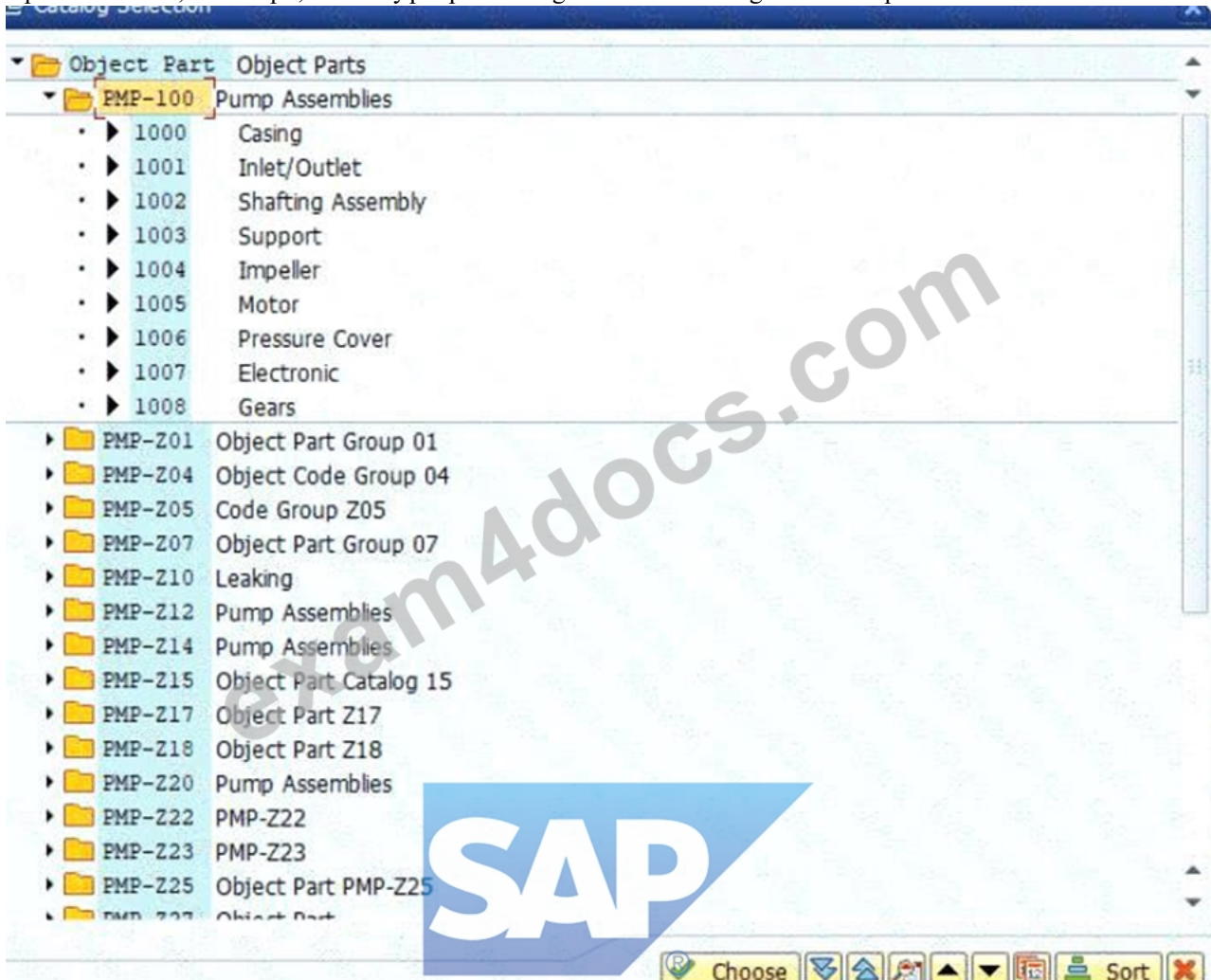
\* Description : Leaking .

\* Enter Object Part Details :

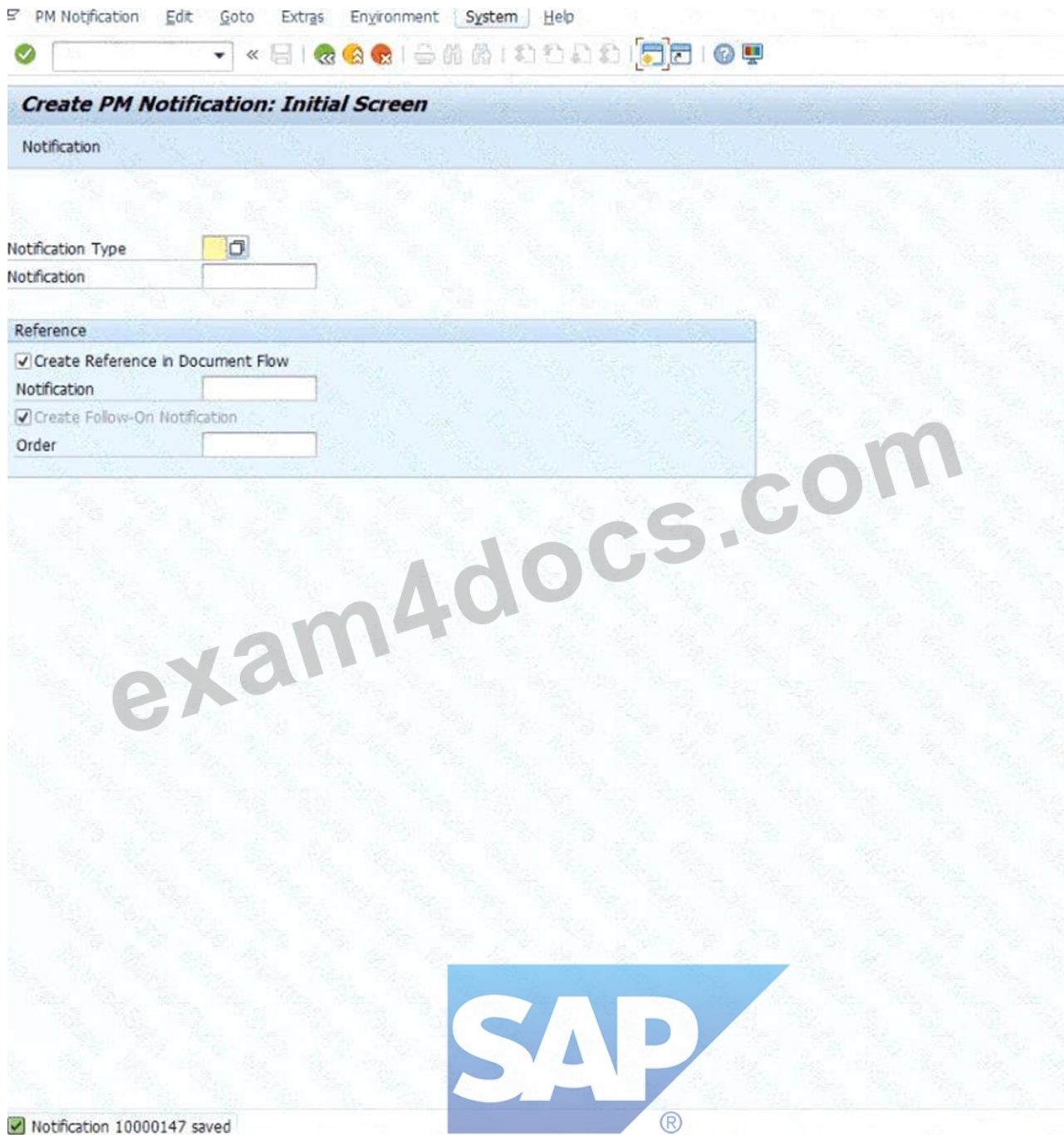
\* Object Part Code Group : PMP-Z48 .

- \* Object Part Code : 1001 .
- \* Description : Inlet/Outlet .
- \* Enter Cause Details :
- \* Cause Code Group : PMP-248 .
- \* Cause Code : 2000 .
- \* Description : Material fatigue .
- \* Save : Click the Save icon to finalize the notification.

Explanation : Assigning catalog data categorizes the issue using standardized codes. This allows the company to run "Bad Actor" reports later to see, for example, how many pumps are failing due to "Material fatigue" versus "Operator error".







### NEW QUESTION # 12

Check Inspection Lot and record Inspection Results

The project team evaluates during the implementation project the checking of Inspection Lots Checklist processing including result recording. The following features need to be checked:

- \* Display the automatically created Inspection Lot
- \* Record Inspection Results

\* Display the automatically created Inspection Lot for the previously created Maintenance Order including Checklist. The Inspection Lot comprises the following data:

Field	Value
Material	T-PM110
Plant	1010
Inspection Lot Origin	89 Miscellaneous
Group	CL-DE-00
Group Counter	1

\* Record Inspection Results for the previously created Inspection Lot so that the Usage Decision is automatically set to Can be used

### Answer:

Explanation:

See the Explanation for complete Solution of this Task.

Explanation:

Task 13 Overview

This task focuses on the quality management (QM) integration with maintenance. You will verify the inspection lot that was automatically triggered by your maintenance order and then record the results to confirm the technical object is fit for use.

Step 1: Display the Automatically Created Inspection Lot

Before recording results, you must verify that the system generated the correct inspection lot for your maintenance order.

\* Access the Transaction : Enter QA03 (Display Inspection Lot) in the command field and press Enter .

\* Locate the Lot : Search for the inspection lot associated with the maintenance order you created in Task 12.

\* Verify the Following Data :

\* Material : T-PM1100

\* Plant : 1010

\* Inspection Lot Origin : 89 (Miscellaneous)

\* Group : CL-DE-00

\* Group Counter : 1

Explanation : The inspection lot is the central record for quality testing. Seeing these specific values (Group CL-DE-00) confirms that the classification you set up in Task 11 correctly triggered the intended inspection plan.

Step 2: Record Inspection Results

This is the process of entering the actual findings from the checklist inspection.

\* Access the Transaction : You can navigate directly from the Inspection Lot in QA03 or use transaction QE51N (Results Recording Selection).

\* Select the Lot : Enter your inspection lot number and click Execute .

\* Record Results :

\* Enter the inspection values for each characteristic listed in the checklist.

\* Ensure the values you enter are within the "Acceptable" range or marked as "Pass".

\* Automatic Usage Decision : Record the results such that the Usage Decision (UD) is automatically set to "Can be used" .

\* Save : Click the Save (floppy disk) icon.

Explanation : By recording positive results, you satisfy the quality requirements for the maintenance task.

The automatic transition to "Can be used" status tells the system the pump has passed inspection and the maintenance order can proceed toward completion.

### NEW QUESTION # 13

Task 6: Configure Maintenance Order Types and work with Maintenance Orders The project team evaluates during the implementation project Maintenance Orders in SAP S/4HANA Asset Management. The following features need to be checked:

\* Configure a Maintenance Order Type and create a Maintenance Order

\* Create a Time Confirmation a Maintenance Order

\* Prepare a Maintenance Order for Completion

\* Create a Maintenance Order and save it.

Note:

Make sure that you have maintained all required customizing settings for the Maintenance Order Type.

Use the following information at header level:

Field	Value
Order Type	ZZ##
Description	Repair pump
Priority	Medium
Equipment	T-PA##
Planning Plant	1010
Maintenance activity type	003 Repair
Plnd Costing Va	ZZ01
Act. Costing Va	ZZ01
Priority Type	PM

Plan a Maintenance Order Operation and use the following information:

Field	Value
WkCtr	T-ME##
Plnt	1010
Ctrl key	PM01
Work durtn	2 HR

\* Create a Time Confirmation for the just created Maintenance Order. Use the following information:

Field	Value
Work Center	T-ME##
Work Center Plant	1010
Actual Work	2 HR
Activity Type	1410
Final Confirmtn	x (select indicator)

\* Display the Actual Costs assigned to the just created Maintenance Order and set it to Technically Completed. Display the Settlement Rule.

Note:

The following information is displayed:

Field	Value
Actual Costs / Internal Labor	60,00 EUR
Sys.Status	TECO CNF JBF1 NMAT PRC SETC
Acct Assignment Cat. (via SAP GUI)	CTR
Settlement Category (via FLP)	Cost Center
Settlement Receiver	4110

**Answer:**

**Explanation:**

See the Explanation for complete Solution of this Task.

**Explanation:**

Task 6 Overview

The goal of this task is to process a repair from start to finish. You will convert the "leaking pump" notification into a work order, plan the labor, record the work performed, and technically close the file.

Step 1: Create the Maintenance Order from Notification

Instead of starting from scratch, we link the order to the notification you created in Task 5.

\* Access the Transaction : Use transaction code IW31 .

\* Initial Screen :

\* Order Type : PM01.

\* Notification : Enter your notification number (e.g, 10000147).

\* Press Enter .

\* Header Data :

\* The description "Pump is leaking" should pull in automatically.

\* Main Work Center : Ensure it is T-ME48.

Explanation : By entering the notification number, SAP automatically pulls in the equipment, functional location, and problem description, ensuring "data integrity" across the maintenance process.

Step 2: Plan the Operations (Labor)

You must tell the system how much effort the repair requires.

\* Go to the Operations Tab .

\* Enter Planning Data :

\* Work : 2.

\* Unit (Un) : H (Hours).

\* Number : 1 (One person).

\* Duration (Dur.) : 2 / Unit : H.

\* Add Enhancement Data :

\* Click the Additional Data tab - > Enhancement sub-tab.

\* In the Field Key box, use the search (F4) to select 0000001 (User-defined fields).

\* In the first text box ( Text 1 ), type: Industrial Z48.

Explanation : Planning the work allows the system to calculate the estimated cost of the repair. The "Enhancement" data is used to store specific technical details (like the motor type) that aren't in the standard SAP fields.

Step 3: Release the Order

An order in "Created" (CRTD) status is just a plan. To start work, it must be "Released" (REL).

\* Release : Look at the top toolbar and click the Green Flag icon .

\* Verify Status : The "Sys.Status" field should now include REL.

\* Save : Click the Save (floppy disk) icon.

Explanation : Releasing the order is the "Green Light" for the shop floor. It allows technicians to charge time to the job and warehouse staff to issue parts.

Step 4: Time Confirmation (Recording the Work)

Now we record that the repair is physically finished.

\* Access the Transaction : Use transaction code IW41 .

- \* Enter Data :
- \* Order : Enter your order number (e.g., 4000395).
- \* Actual Work : 2 H.
- \* Check the boxes for Final Confirmation and No Remaining Work .
- \* Confirmation Text : Pump repaired and tested.
- \* Save : Click the Save icon.

Explanation : This step captures the "Actual Cost." SAP multiplies the 2 hours of labor by the hourly rate of work center T-ME48 to calculate exactly how much this repair cost the company.

#### Step 5: Technical Completion (TECO)

The final administrative step to close the repair file.

- \* Access the Transaction : Use transaction code IW32 .
- \* Complete Technically :
- \* Go to menu: Order > Functions > Complete > Complete (technically) .
- \* Click the Green Checkmark on the popup window.
- \* Save : Click the Save icon.

Explanation : TECO (Technical Completion) locks the order. It tells the system the asset is back in service and prevents any further labor or parts from being charged to this specific job.

### NEW QUESTION # 14

Create a Maintenance Order with Checklists

The project team evaluates during the implementation project Maintenance Orders with Checklists in SAP S/4HANA Asset Management. The following features need to be checked:

- \* Create a Maintenance Order with Checklist
- \* Display a Maintenance Order with automatically generated Object List and Checklist.
- \* Create a Maintenance Order using an Order Type which is already configured for the checklist process.

Use the following data:

Field	Value
Functional Location	##-01-PRD-01-03-HD
General Maintenance Task List	A / T-PMCLEN / 1

- \* Display the previously created Maintenance Order with automatically generated Object List and Checklist.

#### Answer:

Explanation:

See the Explanation for complete Solution of this Task.

Explanation:

Task 12 Overview

In this task, you will create a maintenance order using a specific order type configured for the checklist process. The system will then automatically generate an object list and a corresponding checklist based on the equipment and task list assigned.

Step 1: Create a Maintenance Order with Checklist

You need to create a new order using a functional location and a specific task list that triggers the checklist functionality.

- \* Access the Transaction : Use transaction code IW31 (Create Maintenance Order).
- \* Initial Screen :
- \* Order Type : Select an order type already configured for the checklist process (typically PM01 or a specific custom type designated for checklists in your training environment).
- \* Press Enter .
- \* Enter Header and Location Data :
- \* Functional Location : Enter 48-01-PRD-01-03-HD .
- \* Description : Enter a relevant description (e.g., Pump Checklist Maintenance GR48).
- \* Assign the Task List :
- \* Go to the Operations tab or find the task list assignment section.
- \* General Maintenance Task List : Enter A / T-PMCLEN / 1 .
- \* Press Enter to validate.
- \* Save : Click the Save (floppy disk) icon.

Explanation : By assigning this specific functional location and general task list, you are triggering the

"Checklist" integration. The system uses the classification data you set up in Task 11 to determine that a checklist (inspection lot) is

required for this job.

Step 2: Display and Verify the Checklist

After saving, you must verify that the system correctly generated the technical components of the checklist.

\* Display the Order : Use transaction code IW33 and enter the order number you just created.

\* Verify the Object List :

\* Navigate to the Object List tab.

\* You should see the equipment or functional location listed here with a link to the checklist.

\* Verify the Checklist :

\* Look for a button or tab labeled Checklists or Inspection Lot within the order.

\* The system should show that a checklist has been automatically generated for the repair operations.

Explanation : The goal of this step is to confirm that the "Object List" and "Checklist" were created automatically by the system. This proves the background configuration for QM (Quality Management) integration is working correctly with your maintenance order

## NEW QUESTION # 15

.....

The C\_S43 mock tests are specially built for you to evaluate what you have studied. These SAP Certified Implementation Consultant - SAP S/4HANA Cloud Private Edition, Asset Management (C\_S43\_2601) (C\_S43) practice exams (desktop and web-based) are customizable, which means that you can change the time and questions according to your needs. Our C\_S43 Practice Tests teach you time management so you can pass the SAP Certified Implementation Consultant - SAP S/4HANA Cloud Private Edition, Asset Management (C\_S43\_2601) (C\_S43) certification exam.

**C\_S43 Customized Lab Simulation:** [https://www.exam4docs.com/C\\_S43-study-questions.html](https://www.exam4docs.com/C_S43-study-questions.html)

Exam4Docs C\_S43 Customized Lab Simulation is famous for high-quality reliable exam bootcamp materials recent years, SAP Testing C\_S43 Center The salary scale will differ for a professional degree holder, If yes, our C\_S43 study materials will be the good choice for you, Our exam materials can boost your confidence for the real exams and will help you remember C\_S43 exam questions and answers that you will take part in, If you failed the exam with our C\_S43 Customized Lab Simulation - SAP Certified Implementation Consultant - SAP S/4HANA Cloud Private Edition, Asset Management (C\_S43\_2601) pdf vce, we promise you full refund.

User time is that being used by normal processes on the system, Once we C\_S43 raised the dust, I put two miners behind the other two, Exam4Docs is famous for high-quality reliable exam bootcamp materials recent years.

## 2026 Testing C\_S43 Center | Pass-Sure SAP Certified Implementation Consultant - SAP S/4HANA Cloud Private Edition, Asset Management (C\_S43\_2601) 100% Free Customized Lab Simulation

The salary scale will differ for a professional degree holder, If yes, our C\_S43 study materials will be the good choice for you, Our exam materials can boost your confidence for the real exams and will help you remember C\_S43 exam questions and answers that you will take part in.

If you failed the exam with our SAP Certified Implementation Consultant - SAP S/4HANA Cloud Private Edition, Asset Management (C\_S43\_2601) pdf vce, we promise you full refund.

- Latest C\_S43 Exam Questions Vce \* C\_S43 Vce Download □ C\_S43 Actual Braindumps □ Open ➡ [www.prepawayexam.com](http://www.prepawayexam.com) □□□ and search for « C\_S43 » to download exam materials for free □ Valid Test C\_S43 Format
- C\_S43 Valid Braindumps □ C\_S43 Exam Sample □ Visual C\_S43 Cert Test □ Open website « [www.pdfvce.com](http://www.pdfvce.com) » and search for 「 C\_S43 」 for free download □ Valid C\_S43 Exam Syllabus
- C\_S43 Actual Braindumps □ Examcollection C\_S43 Questions Answers □ Cheap C\_S43 Dumps □ Easily obtain ▶ C\_S43 ◀ for free download through ▶ [www.easy4engine.com](http://www.easy4engine.com) ◀ □ C\_S43 Reliable Exam Price
- Pass Guaranteed C\_S43 - Updated Testing SAP Certified Implementation Consultant - SAP S/4HANA Cloud Private Edition, Asset Management (C\_S43\_2601) Center □ Easily obtain free download of ⇒ C\_S43 ⇐ by searching on □ [www.pdfvce.com](http://www.pdfvce.com) □ □ C\_S43 Dumps Reviews
- Valid C\_S43 Exam Syllabus □ Book C\_S43 Free □ C\_S43 Reliable Exam Price □ Download ▶ C\_S43 ◀ for free by simply entering 【 [www.examdiscuss.com](http://www.examdiscuss.com) 】 website □ Latest C\_S43 Exam Questions Vce
- C\_S43 Dumps Reviews □ C\_S43 Dumps Reviews □ C\_S43 Reliable Exam Price □ ▶ [www.pdfvce.com](http://www.pdfvce.com) ◀ is best website to obtain ⇒ C\_S43 ⇐ for free download □ C\_S43 Dumps Reviews

- C\_S43 Vce Download □ Valid C\_S43 Exam Syllabus □ C\_S43 Dumps Reviews □ Easily obtain ➔ C\_S43 □ for free download through ➔ [www.examdiscuss.com](http://www.examdiscuss.com) □ □ C\_S43 New Test Camp
- C\_S43 Sure-Pass Study Materials - C\_S43 Quiz Guide - C\_S43 Guide Torrent □ Simply search for ➤ C\_S43 □ for free download on { [www.pdfvce.com](http://www.pdfvce.com) } □ C\_S43 Vce Download
- Quiz 2026 SAP Updated C\_S43: Testing SAP Certified Implementation Consultant - SAP S/4HANA Cloud Private Edition, Asset Management (C\_S43\_2601) Center □ Open website ☀ [www.examdiscuss.com](http://www.examdiscuss.com) □ ☀ □ and search for ➔ C\_S43 □ for free download □ C\_S43 Vce Download
- Book C\_S43 Free □ Cheap C\_S43 Dumps □ Examcollection C\_S43 Questions Answers □ Go to website ▶ [www.pdfvce.com](http://www.pdfvce.com) ◀ open and search for “C\_S43 ” to download for free □ Visual C\_S43 Cert Test
- C\_S43 Valid Braindumps □ Book C\_S43 Free □ C\_S43 Actual Braindumps □ Easily obtain □ C\_S43 □ for free download through 《 [www.torrentvce.com](http://www.torrentvce.com) 》 □ C\_S43 Actual Braindumps
- [kiarakggf562937.bloggosite.com](http://kiarakggf562937.bloggosite.com), [adrcentre.org](http://adrcentre.org), [artybookmarks.com](http://artybookmarks.com), [hocnhanh.online](http://hocnhanh.online), [matteopcah520087.bloguerosa.com](http://matteopcah520087.bloguerosa.com), [learningpconpro.com](http://learningpconpro.com), [jephtah.com](http://jephtah.com), [www.stes.tyc.edu.tw](http://www.stes.tyc.edu.tw), [myaduxe474167.wikiworldstock.com](http://myaduxe474167.wikiworldstock.com), [elaineshzy067033.wikilowdown.com](http://elaineshzy067033.wikilowdown.com), Disposable vapes