



Online Cisco 300-510 Test, 300-510 Reliable Exam Labs

2023

 IPSpecialist
Sharpen Your Skills for the Digital Future

Exam: 300-510
CCNP SPRI: Implementing Cisco Service Provider Advanced Routing Solutions
Study Guide with Practice Questions & Labs
First Edition



Up to Date Exam Blueprint
Latest exam questions and regularly refreshed content for you to master your exam certification.

Ace Exams with Confidence:
Our precise and comprehensive study material ensures passing grades.

What's more, part of that PDFBraindumps 300-510 dumps now are free: https://drive.google.com/open?id=1t84R6Br9AQyGKJ_brAFkpKZXi7K4n-

The pass rate is 98.65% for 300-510 learning materials, and if you choose us, we can ensure you that you can pass the exam just one time. In addition, 300-510 exam dumps are edited by skilled experts, who have the professional knowledge for 300-510 exam dumps, therefore the quality and accuracy can be guaranteed. We also pass guarantee and money back guarantee for 300-510 Learning Materials, and if you fail to pass the exam, we will give you full refund, and no other questions will be asked.

Earning the Cisco 300-510 Certification can provide you with many benefits, including increased job opportunities, higher salaries, and greater credibility in the industry. Implementing Cisco Service Provider Advanced Routing Solutions certification is highly valued by employers and can help you stand out from other candidates when applying for jobs in the field of service provider networking.

>> Online Cisco 300-510 Test <<

100% Pass Quiz 2026 Cisco 300-510: Implementing Cisco Service Provider Advanced Routing Solutions Updated Online Test

When you are struggling with those troublesome reference books; when you feel helpless to be productive during the process of preparing 300-510 exams; when you have difficulty in making full use of your sporadic time and avoiding procrastination. It is time for you to realize the importance of our 300-510 Test Prep, which can help you solve these annoyance and obtain a 300-510

certificate in a more efficient and productive way. Not only will you be able to pass any 300-510 test, but will get higher score, if you choose our 300-510 study materials.

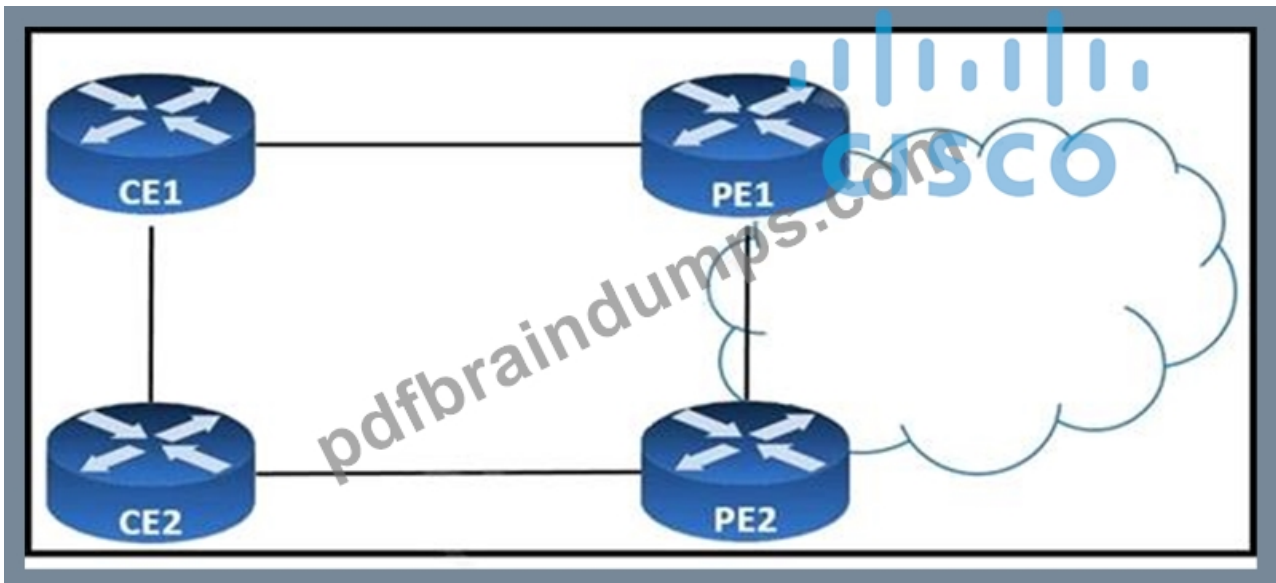
Prerequisites for Final Exam

The individuals concerned will already have awareness and skills involving how to execute and operate Cisco core technologies for the networks that are targeted at the Service Providers. They should also have a deep comprehension of the 300-510 subject matter so gaining the requisite knowledge takes deliberate learning that makes use of recommended courses as well as revision or study guides. Potential candidates should also be aware of the registration process for the official test. Thus, they should have a Pearson VUE account before they can do the final registration, which includes selecting the number of the evaluation they intend to do.

Cisco Implementing Cisco Service Provider Advanced Routing Solutions Sample Questions (Q148-Q153):

NEW QUESTION # 148

Refer to the exhibit.

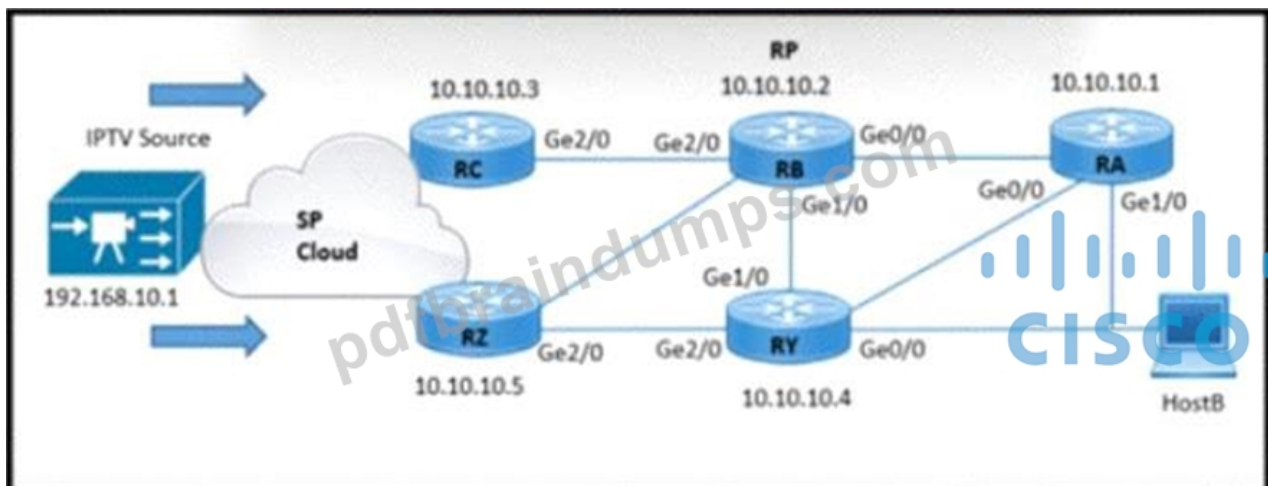


CE1 and CE2 are iBGP neighbors in AS 65516. All traffic that exits AS 65516 must use the link from CE1 to PE1. CE1 is advertising a higher local preference to CE2, but traffic from CE2 still prefers the PE2 link. Which action corrects the problem?

- A. Add the lower local-preference value on PE2 towards CE2.
- B. Configure CE1 to send routes to CE2 with a higher MED.
- **C. Add the next-hop self command to the CE1 neighbor statement for CE2.**
- D. Configure CE1 to send routes to CE2 with a higher weight.

Answer: C

NEW QUESTION # 149

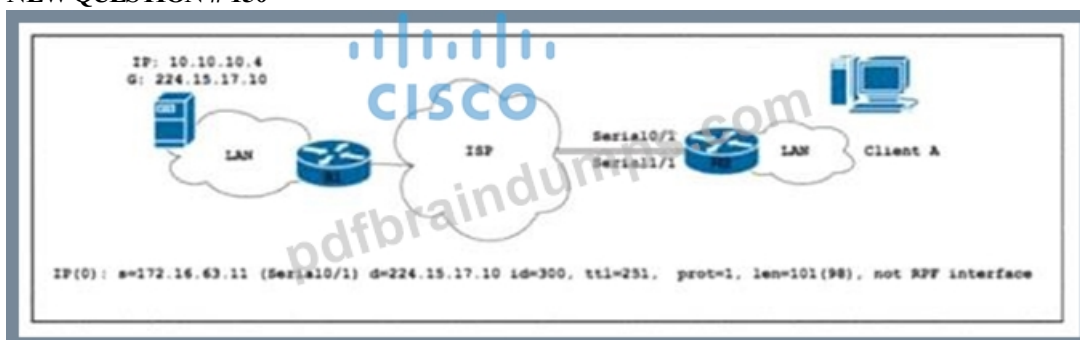


Refer to the exhibit. HostB receives an IPTV traffic stream from the multicast source at 192.168.10.1. When router RB is powered down, it impacts multicast traffic forwarding to downstream peers. The RA and RB routers reside in the same physical location. Which two configurations must be implemented so that HostB receives the multicast stream even when RB is powered down? (Choose two)

- A. Enable bi-directional PIM on all routers.
- B. Set the backup RP address to 10.10.10.3 on routers RY and RZ.
- C. Enable PIM SSM mode on routers RA and RY.
- D. Enable PIM sparse mode on routers RC and RZ with a static RP address of 10.10.10.1.
- E. Set the RP address to 10.10.10.4 on all routers

Answer: C,D

NEW QUESTION # 150



Refer to the exhibit. Mid-sized company Z connected two branch offices via a multicast-enabled ISP using the BGP routing protocol. PIM was implemented to support multicast streaming between the branches via MSDP. Client A cannot connect to the multicast stream source of company Z.

The network engineer ran a debug on the edge of the network as shown. Which action resolves the issue?

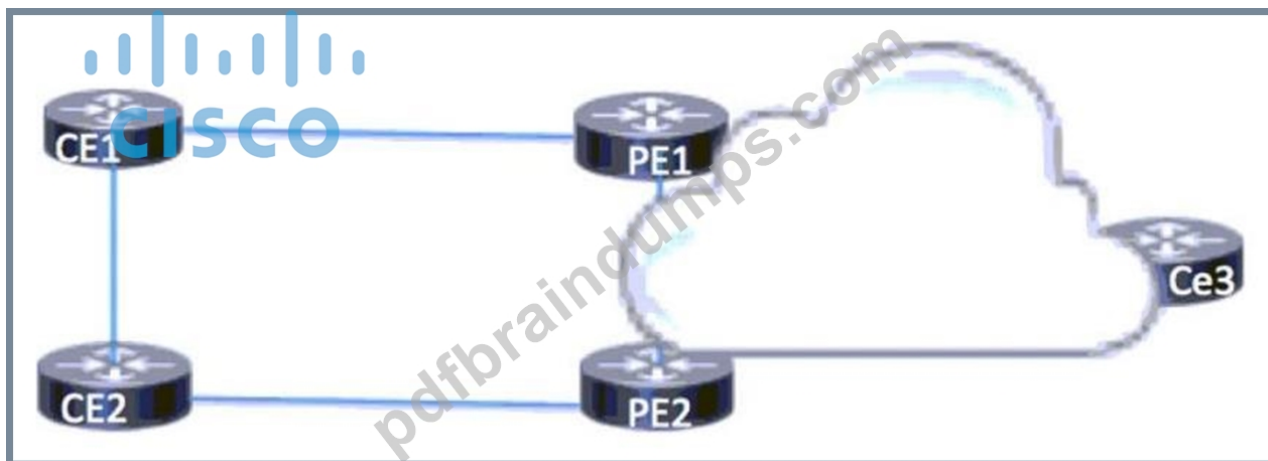
- A. Implement MBGP and enable a multicast address family on R2
- B. Deploy BSR on routers R1 and R2 and enable multicast on both LAN segments.
- C. Enable the BGP routing protocol and advertise the 10.10.10.0/24 subnet on R1.
- D. Configure the PIM protocol on the Serial 1/1 interface and enable Auto-RP

Answer: B

NEW QUESTION # 151

Refer to the exhibit. CE1 and CE2 use connectivity over the service provider cloud to reach CE3.

In the event of a link failure in the service provider cloud, which BGP feature relies on IGP convergence to quickly assist in the installation of a backup path?

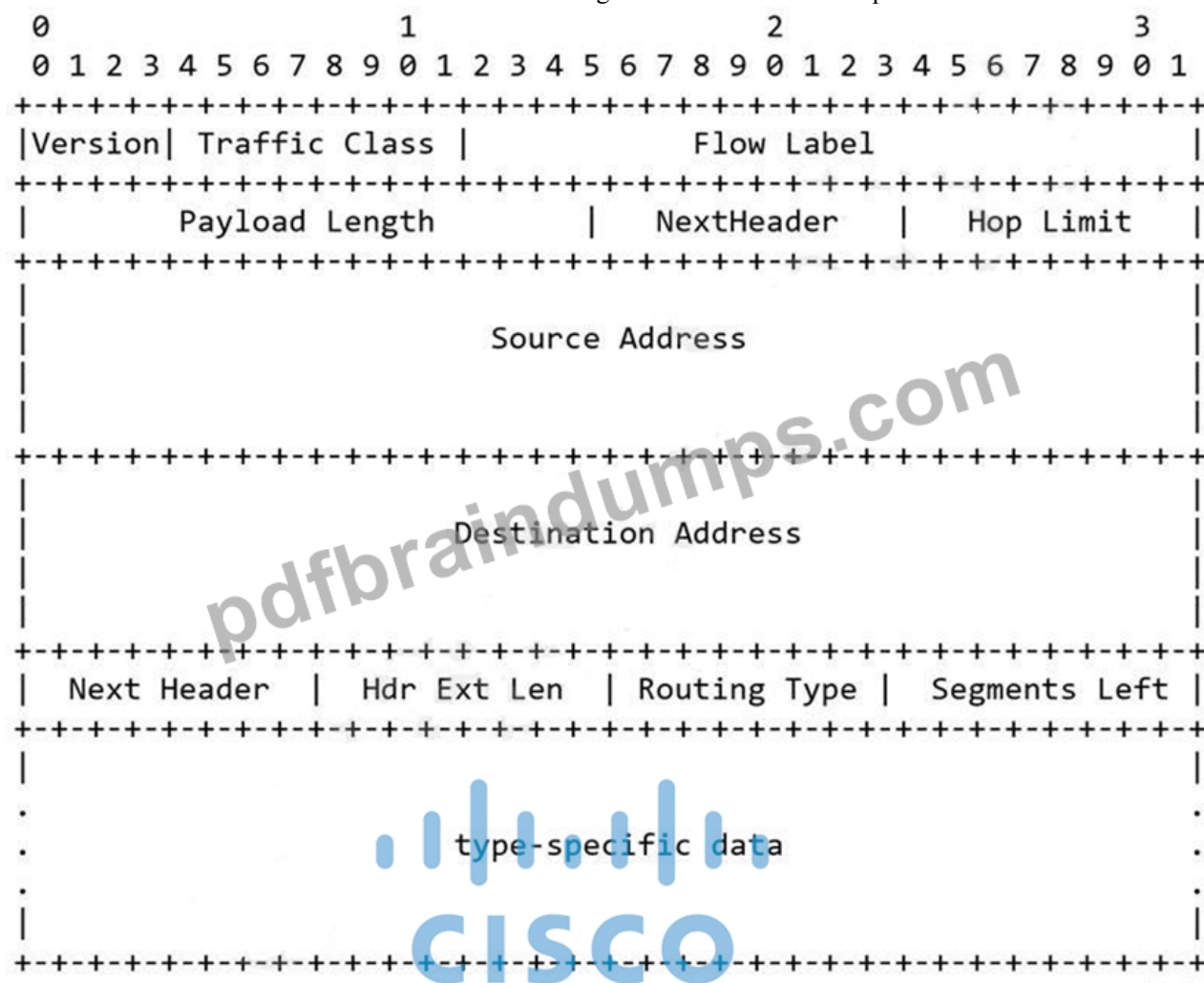


- A. BGP confederations
- **B. BGP confederation**
- C. BGP route dampening
- D. BGP graceful restart

Answer: B

NEW QUESTION # 152

Refer to the exhibit. The extension header of the IPv6 header is ignored when which value is equal to zero?



- **A. Segments Left**
- B. Hdr Ext Len

P.S. Free 2026 Cisco 300-510 dumps are available on Google Drive shared by PDFBraindumps: https://drive.google.com/open?id=1t84R6Br9AQvzGKJ_brAFkpKZXi7K4n-