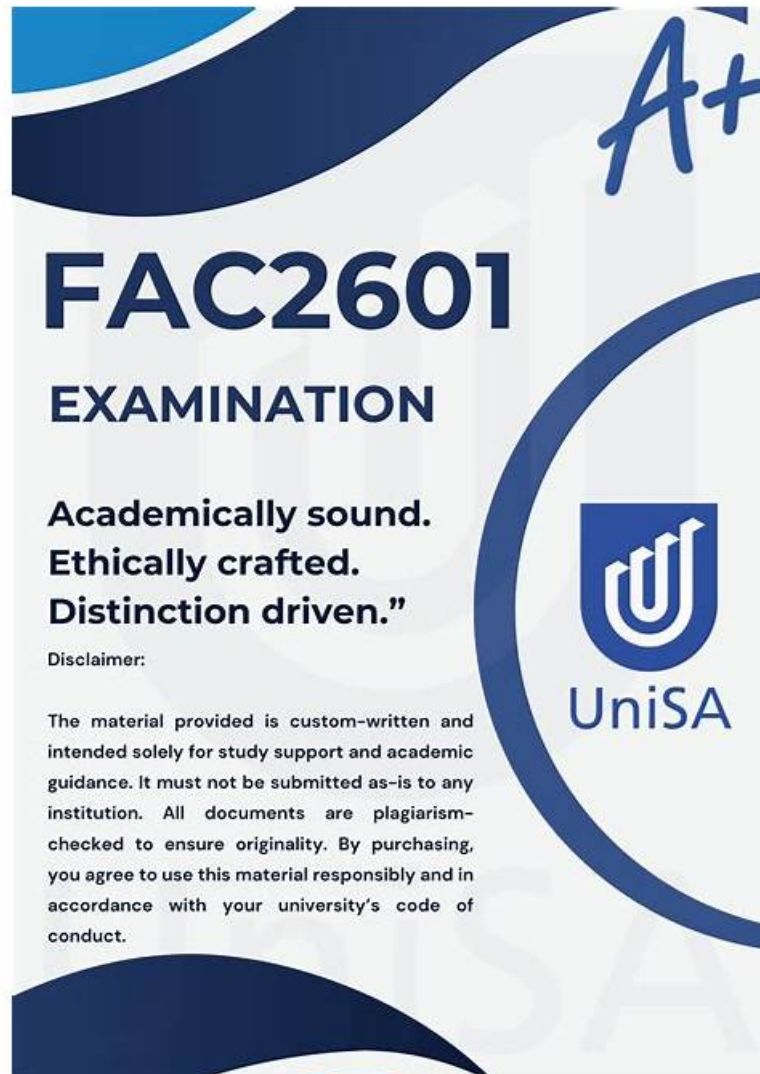


# 2026 Valid Valid C\_S43\_2601 Exam Cram | 100% Free C\_S43\_2601 Study Material



Just like the saying goes, it is good to learn at another man's cost. In the process of learning, it is more important for all people to have a good command of the method from other people. The C\_S43\_2601 study materials from our company will help you find the good study method from other people. Using the C\_S43\_2601 Study Materials from our company, you can not only pass your exam, but also you will have the chance to learn about the different and suitable study skills. We believe these skills will be very useful for you near life.

We are famous for our company made these C\_S43\_2601 exam questions with accountability. We understand you can have more chances getting higher salary or acceptance instead of preparing for the C\_S43\_2601 exam. Our C\_S43\_2601 practice materials are made by our responsible company which means you can gain many other benefits as well. We offer free demos of our C\_S43\_2601 learning guide for your reference, and send you the new updates if our experts make them freely.

>> Valid C\_S43\_2601 Exam Cram <<

**Valid C\_S43\_2601 Exam Cram and SAP C\_S43\_2601 Study Material: SAP Certified Implementation Consultant - SAP S/4HANA Cloud Private Edition, Asset Management (C\_S43\_2601) Pass Certainly**

The receptiveness of three novel relationships for SAP C\_S43\_2601 exam licenses clients to rehearse themselves in various

conditions. Free demos are accessible for download to look at in work areas for SAP Certified Implementation Consultant - SAP S/4HANA Cloud Private Edition, Asset Management (C\_S43\_2601) (C\_S43\_2601) Exam SAP C\_S43\_2601 Dumps awards you the whole day, constant client affiliation, and 365 days of free updates.

## SAP Certified Implementation Consultant - SAP S/4HANA Cloud Private Edition, Asset Management (C\_S43\_2601) Sample Questions (Q10-Q15):

### NEW QUESTION # 10

Create a Task List

The project team evaluates during the implementation project Task Lists in SAP S/4HANA Asset Management. The following features need to be checked:

- \* Create a Task List header
- \* Create Task List operations
- \* Create a Task List with 3 Task List operations. Maintenance Strategy Z## comprises Maintenance Packages with different hierarchy levels.

Use the following information at header level of the Task List:

Field	Value
Group	TL-##
Group Counter	1
Planning Plant	1010
Description	Regular Maintenance GR##
Work Center	MK-00
Work Center Plant	1010
Usage	4
Planner Group	P##
Maintenance Strategy	Z##

Use the following information for each Task List operation:

Field	Value
Work Ctr	MK-00
Plnt	1010
Control Key	PM01
Work	30
Unit	MIN

\* Assign Maintenance Packages to the Task List Operations as follows:

- \* Operation 10 is to be performed monthly.
- \* Operation 20 is to be performed every 4 months.
- \* Operation 30 is to be performed every 12 months.

### Answer:

Explanation:

See the Explanation for complete Solution of this Task.

Explanation:

Since we encountered that error with the Z48 strategy, we must ensure that is fixed before we can finish the Task List. Here is the complete, verified, step-by-step process to finalize Task 7, including the "hidden" pre-requisite.

Task 7: Create a General Task List

Objective : To create a standardized template of maintenance steps that can be automatically pulled into future work orders based

on a schedule.

Step 1: The Pre-requisite (Fixing Strategy Z48)

If you haven't done this yet, SAP will not let you save the Task List.

- \* Transaction : IP11 (Maintain Maintenance Strategies).
- \* Action : Click New Entries .
- \* Strategy : Z48
- \* Description : Strategy for Group 48
- \* Strategy Unit : MON (Months).
- \* Packages : On the left, double-click Packages , then click New Entries :
- \* Line 1 : Cycle 1 / Unit MON / Text Monthly
- \* Line 2 : Cycle 4 / Unit MON / Text Every 4 Months
- \* Line 3 : Cycle 12 / Unit MON / Text Yearly
- \* Save (Floppy Disk icon).

Explanation : A strategy is the "calendar" that defines how often work happens. Without this, the system doesn't know what "Monthly" or "Yearly" means.

Step 2: Create Task List Header

- \* Transaction : IA05 .
- \* Initial Screen : Group TL-48, Group Counter 1. Press Enter .
- \* Header Fields :
- \* Description : Regular Maintenance GR48
- \* Planning Plant : 1010
- \* Work Center : MK-00 / Plant : 1010
- \* Usage : 4 (Plant Maintenance)
- \* Status : 4 (Released)
- \* Planner Group : P48
- \* Maint. Strategy : Z48

Explanation : The header defines who is responsible for the work (Planner Group P48) and which scheduling rules (Strategy Z48) apply to the whole list.

Step 3: Create Operations

- \* Click the Operations button (F6) at the top.
- \* Enter three rows with this data:
- \* Op 10 : Work Center MK-00, Plant 1010, Control Key PM01, Work 30, Unit MIN.
- \* Op 20 : (Same as above).
- \* Op 30 : (Same as above).

Explanation : Operations are the actual steps the technician follows. Here, we are saying each step takes 30 minutes of mechanical labor.

Step 4: Assign Maintenance Packages (The "Frequencies")

This is the most important part of Task 7. We tell SAP which operation happens when.

- \* Select Row 10 (click the box at the far left of the row).
- \* Go to Menu: Goto > Maintenance Packages .
- \* Check the box for the 1 Month package. Click the Back (Green Arrow) icon.
- \* Select Row 20 .
- \* Go to Goto > Maintenance Packages and check the 4 Month package. Click Back .
- \* Select Row 30 .
- \* Go to Goto > Maintenance Packages and check the 12 Month package. Click Back .

Explanation : Now, SAP knows that Op 10 happens every month, but Op 30 only happens once a year.

Step 5: Save

- \* Click the Save icon.
- \* The message at the bottom should say: "Task list TL-48 saved with group counter 1" .

## **NEW QUESTION # 11**

Create a Maintenance Plan

The project team evaluates during the implementation project Maintenance Plans in SAP S/4HANA Asset Management. The following features need to be checked:

Create a Maintenance Plan

Create a Maintenance Plan and save it. Use the following information:

Field	Value
Maint. Plan cat. (via SAP GUI) Maintenance Plan for (via FLP)	Maintenance Order
Maintenance Strategy	Z##
Description	Regular pump maintenance - Z##
Equipment	T-PA##
Order Type	PM02
Task List Type	A
Group	TL-##
Counter	1

**Answer:**

Explanation:

See the Explanation for complete Solution of this Task.

Explanation:

Task 8: Create a Maintenance Plan

The objective of this task is to create a strategy-based maintenance plan that will automatically generate work orders for your pump based on the frequencies defined in your task list.

Step 1: Access the Transaction

\* Transaction Code : Enter IP42 in the command field and press Enter .

\* Initial Screen :

\* Maintenance Plan Category : Select Maintenance Order (or "Maintenance plan for Maintenance Order" if using the Fiori Launchpad).

\* Maintenance Strategy : Enter Z48 .

\* Press Enter .

Step 2: Enter Header and Maintenance Item Data

Once you are on the main creation screen, fill in the "Maintenance Item" section to define what is being maintained and how the orders should look:

\* Description : Enter Regular pump maintenance Z48 .

\* Equipment : Enter T-PA48 .

\* Planning Plant : This should default to 1010 based on the equipment, but ensure it is correct.

\* Order Type : Enter PM02 .

Explanation : By assigning Equipment T-PA48 and Order Type PM02 , you are telling SAP to generate a specific "Planned" maintenance order every time this schedule is triggered.

Step 3: Link the Task List

This step connects the plan to the specific maintenance steps (operations) you created in Task 7.

\* Look for the Task List section at the bottom of the screen.

\* Task List Type : Enter A (General Task List).

\* Group : Enter TL-48 .

\* Counter : Enter 1 .

\* Press Enter to validate the connection. You should see the description "Regular Maintenance GR48" appear.

Explanation : Linking the Task List ensures that when the maintenance plan generates an order, it automatically copies the 30-minute operations you defined earlier into that order.

Step 4: Set Scheduling Parameters (Optional but Recommended)

While the table in your document focuses on the data above, typically you would click the Maintenance Plan Scheduling Parameters tab to ensure the "Scheduling Period" and "Start Date" are set. However, for the assessment, the mandatory data is what we entered in Steps 1-3.

Step 5: Save

\* Click the Save (floppy disk) icon.

\* Note your Maintenance Plan Number : The system will display a message at the bottom, such as

"Maintenance plan 123 saved." Write this number down , as you will need it for Task 9: Schedule a Maintenance Plan .

Task 8 is now complete! You have built the automated "brain" that will handle the recurring maintenance for your pump.

## NEW QUESTION # 12

Check Inspection Lot and record Inspection Results

The project team evaluates during the implementation project the checking of Inspection Lots Checklist processing including result recording. The following features need to be checked:

- \* Display the automatically created Inspection Lot
- \* Record Inspection Results
- \* Display the automatically created Inspection Lot for the previously created Maintenance Order including Checklist. The Inspection Lot comprises the following data:

Field	Value
Material	T-PM1100
Plant	1010
Inspection Lot Origin	89 Miscellaneous
Group	CL-DE-00
Group Counter	1

- \* Record Inspection Results for the previously created Inspection Lot so that the Usage Decision is automatically set to Can be used

## Answer:

Explanation:

See the Explanation for complete Solution of this Task.

Explanation:

Task 13 Overview

This task focuses on the quality management (QM) integration with maintenance. You will verify the inspection lot that was automatically triggered by your maintenance order and then record the results to confirm the technical object is fit for use.

Step 1: Display the Automatically Created Inspection Lot

Before recording results, you must verify that the system generated the correct inspection lot for your maintenance order.

- \* Access the Transaction : Enter QA03 (Display Inspection Lot) in the command field and press Enter .
- \* Locate the Lot : Search for the inspection lot associated with the maintenance order you created in Task 12.
- \* Verify the Following Data :
- \* Material : T-PM1100
- \* Plant : 1010
- \* Inspection Lot Origin : 89 (Miscellaneous)
- \* Group : CL-DE-00
- \* Group Counter : 1

Explanation : The inspection lot is the central record for quality testing. Seeing these specific values (Group CL-DE-00) confirms that the classification you set up in Task 11 correctly triggered the intended inspection plan.

Step 2: Record Inspection Results

This is the process of entering the actual findings from the checklist inspection.

- \* Access the Transaction : You can navigate directly from the Inspection Lot in QA03 or use transaction QE51N (Results Recording Selection).
- \* Select the Lot : Enter your inspection lot number and click Execute .
- \* Record Results :
- \* Enter the inspection values for each characteristic listed in the checklist.
- \* Ensure the values you enter are within the "Acceptable" range or marked as "Pass".
- \* Automatic Usage Decision : Record the results such that the Usage Decision (UD) is automatically set to "Can be used" .
- \* Save : Click the Save (floppy disk) icon.

Explanation : By recording positive results, you satisfy the quality requirements for the maintenance task.

The automatic transition to "Can be used" status tells the system the pump has passed inspection and the maintenance order can proceed toward completion.

## NEW QUESTION # 13

In the following assessment you will slip into the role of a consultant implementing SAP S/4HANA Asset Management OnPrem/Private Cloud for Machine Manufacturing Inc. . You need to fulfill various system tasks to setup certain business processes and test them.

Note:


In the task descriptions is no information provided if and/or how Asset Management specific customizing settings need to be adapted. This is an implicit part of the exam

Note:

There is no information provided which UI to use when creating the data in the system e.g. SAP GUI, SAP Fiori Launchpad. This is an implicit part of the exam

Your performance in each exercise will be evaluated to produce an overall score that determines a pass or fail for the exam. Please read every exercise carefully and enter any data exactly as requested without alteration. Some input data is provided in tables or in the task descriptions, however your input data is not limited to these parameters.

Use the following Logon information for all tasks:

System	User Name / ID	Password
T41 400	S43900-## 	Welcome1

Caution:

Please make sure you are always using your assigned group number (denoted as ## in the following) .

Your results will not be recorded if you are not using your own group number.

For example, if your group number is 10 i.e. (## = 10), your user will be S43900-10.

To find your group number: Click the Access button on the practice system details page. You will find your group number displayed beneath the "Get started" header in the pop-up window. Alternatively, in your Windows Terminal Server, choose the Windows button in the lower left corner. The Start Menu opens. In its upper left corner, choose the Expand icon (three white lines). Find your user name next to the user icon on the left side of the menu - the last two digits of the user name are your group number ##.

Note:

To access your backend system in the Windows Terminal Server, open the SAP Logon application and start the T41 system (Client 400 ). You can access the SAP Fiori Launchpad from the SAP Menu in T41. Always work with user S43900-## in order to have the required roles in place for your tasks.

Caution:

To keep the system running smoothly and avoid unnecessary costs, please follow the assigned exercises carefully when using the SAP Landscape. Avoid going beyond the exercise scope and stay within your allocated resources to help maintain a stable and efficient environment for everyone and to ensure your data is evaluated properly.

Note:

In the following, you will be asked to create new transaction data, among others. If you are asked to create one specific new transaction data object, and - for whatever reason - you create more than one of that kind, SAP will evaluate your newest version only. For example: if you are asked to create a Maintenance Order of a specific Order Type in an exercise and you create three different Maintenance Orders of a specific Order Type, only your order with the highest order number will be evaluated.

### Answer:

Explanation:

See the Explanation for complete Solution of this Task.

Explanation:

Task Objective

In this assessment, you assume the role of a consultant implementing SAP S/4HANA Asset Management for Machine Manufacturing Inc. . Your goal is to set up and test specific business processes through various system tasks.

Step 1: Identify Your Assigned Group Number (##)

This is the most critical step, as your results will only be recorded if you use your specific group number, denoted as ## in all instructions.

How to find your number:

\* Method A: Click the Access button on the practice system details page; your group number is displayed beneath the "Get started" header.

\* Method B: In the Windows Terminal Server, click the Windows button (Start Menu), select the Expand icon (three white lines), and find your user name next to the user icon. The last two digits of that name are your group number.

Step 2: Access the System

You must use the specific credentials provided to ensure you have the required roles for the assessment.

Logon Credentials:

\* System : T41

\* Client : 400

\* User Name/ID : S43900-## (e.g., if your group number is 10, use S43900-10)

\* Password : Welcome1

Connection Methods:

- \* SAP GUI : Open the SAP Logon application in the Windows Terminal Server and start the T41 system (Client 400).
- \* SAP Fiori Launchpad : This can be accessed directly from the SAP Menu within the T41 system.

Step 3: Understand Implicit Exam Rules

The assessment does not provide exhaustive instructions; certain technical decisions are considered part of the exam.

\* Customizing : You must determine if and how specific Asset Management customizing settings need to be adapted.

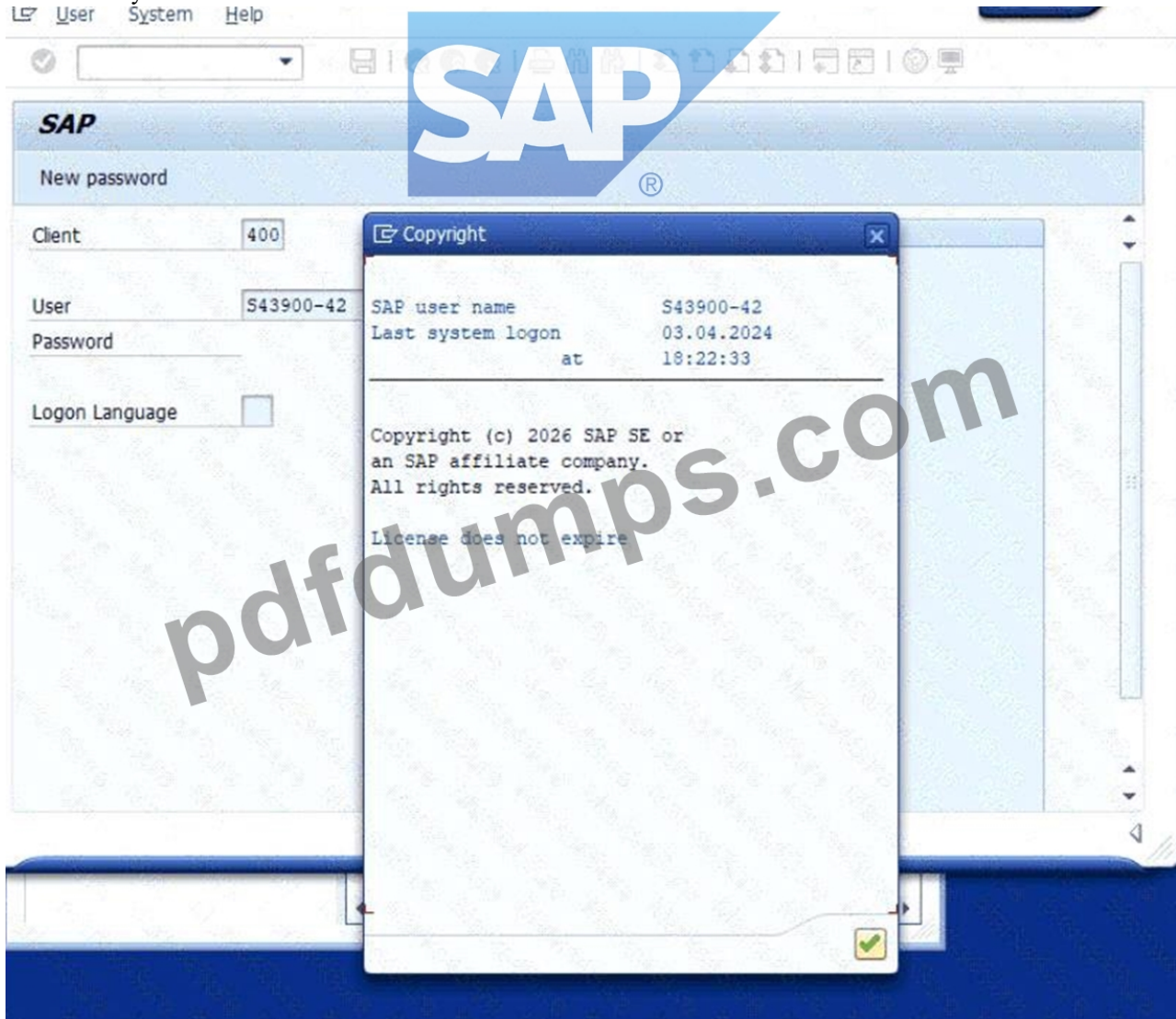
\* User Interface : You are free to choose between the SAP GUI or SAP Fiori Launchpad to create data, as the instructions do not specify which to use.

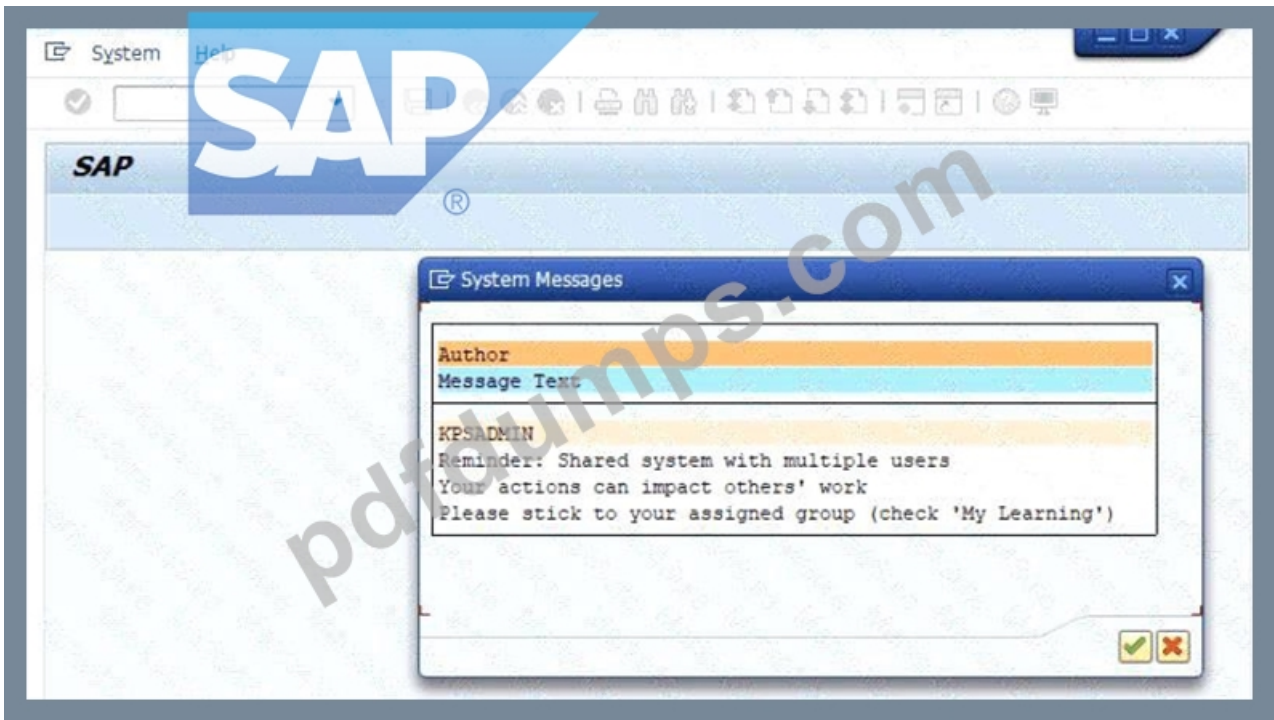
\* Data Accuracy : Enter all data exactly as requested in the tables or descriptions without any alterations.

Step 4: Evaluation of Transaction Data

If you are asked to create a specific transaction object (like a Maintenance Order) and you create multiple versions, the system will only evaluate the newest version (the one with the highest identifying number).

Caution : To ensure your data is evaluated properly and to maintain system stability, stay strictly within the scope of the assigned exercises and your allocated resources.





**NEW QUESTION # 14**

Task 4: Configure and create Technical Objects

The project team evaluates during the implementation project Technical Object structures in SAP S/4HANA Asset Management.

The following features need to be checked:

\* Configure and create Functional Locations

\* Create, serialize and install Equipment

\* Create Functional Location master record ZZ0##-01 and save it. Use the following information:

Field	Value
Functional Location	ZZ0##-01
Structure Indicator	ZZ##
Functional Location Category	T
Description	Production Line Z##
Maintenance Plant	1020
Cost Center	4110
Planning Plant	1020
Planner Group	Z##
Main WorkCtr	T-ME##
Work Center Plant	1010

\* Create Equipment master record EQUI-## and save it. Use the following information:

Field	Value
Equipment Description	EQUI-##
	Drive Motor GR##
Equipment Category	T

\* Serialize the just created Equipment master record EQUI-## . Use the following data:

Field	Value
Material	T-PM9000
Serial Number	EQUI-##

\* Install Equipment EQUI-## at the Functional Location 00-01-ASS-02 .

**Answer:**

Explanation:

See the Explanation for complete Solution of this Task.

Explanation:

Task 4: Configure and create Technical Objects

This task evaluates your ability to structure and manage the physical and functional hierarchy of assets in SAP S/4HANA Asset Management.

Step 1: Create Functional Location Master Record

A Functional Location represents the area at which a maintenance task is to be performed.

\* Access the Transaction : Use transaction code IL01 (Create Functional Location).

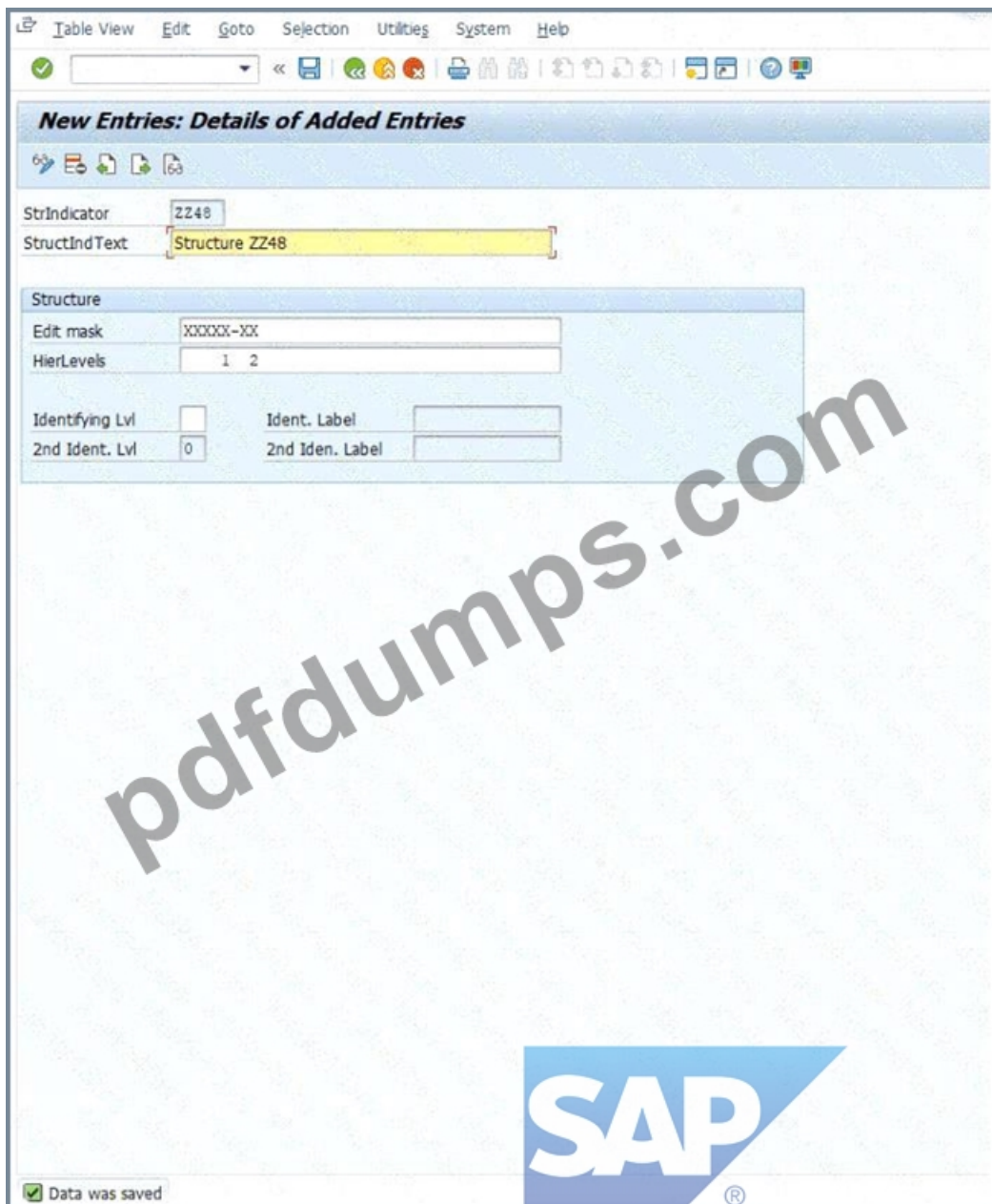
\* Enter Initial Data :

\* Functional Location : ZZ048-01.

\* Structure Indicator : ZZ48.

\* Functional Location Category : T.

\* Press Enter .



\* Enter General Data :

\* Description : Production Line Z48.

\* Enter Location and Organization Data :

\* Maintenance Plant : 1020.

\* Cost Center : 4110.

\* Planning Plant : 1020.

\* Planner Group : Z48.

\* Main WorkCtr : T-ME48.

\* Work Center Plant : 1010.

\* Save : Click the Save icon.

Explanation : By creating this record, you define a specific functional area within Plant 1020 where maintenance costs and history will be tracked for all equipment installed there.

**SAP**

### Create Functional Location: Master Data

Classification: Measuring points/counters | Data origin... | AllMeasDocs

Functional loc.: ZZ048-01 | Cat.: Technical system (Tra...)

Description: Production Line Z48

Status: CRTE

General | Location | Organization | Structure | Documents and Warranties

**Account assignment**

Company Code: 1010 | Company Code 1010 | Waldorf

Business Area: [ ]

Asset: [ ] / [ ]

Cost Center: 4110 / A000

WBS Element: [ ]

StandgOrder: [ ]

SettlementOrder: [ ]

**Responsibilities**

Planning Plant: 1020 | Berlin

Planner Group: Z48

Main WorkCtr: T-ME48

Catalog Profile: [ ]

<<

**Create Functional Location: Initial Screen**

Functional Loc.   
 Edit mask   
 HierLevels

Labeling system  Standard indicator (internal)  
 StrIndicator  Structure ZZ48  
 FunctLocCat.  Technical system (Training)

Copy from

FunctLocation   
 RefLocation

Default value for superior functional location

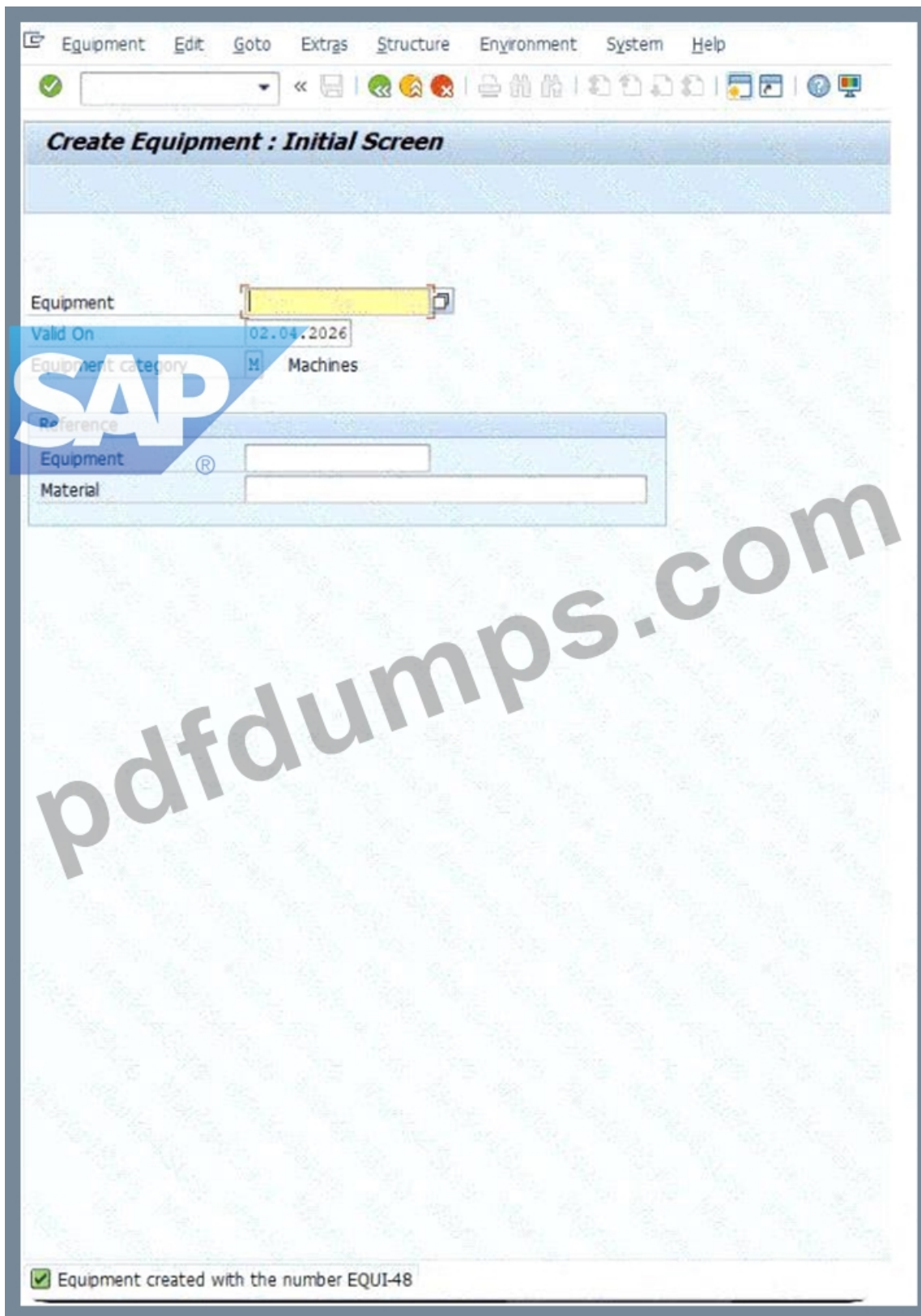
SupFunctLoc.   
 Description

Functional location ZZ048-01 created

**Step 2: Create Equipment Master Record**

Equipment represents an individual physical object that is maintained as an autonomous unit.

- \* Access the Transaction : Use transaction code IE01 (Create Equipment).
- \* Enter Initial Data :
- \* Equipment : EQUI-48.
- \* Equipment Category : T.
- \* Press Enter .

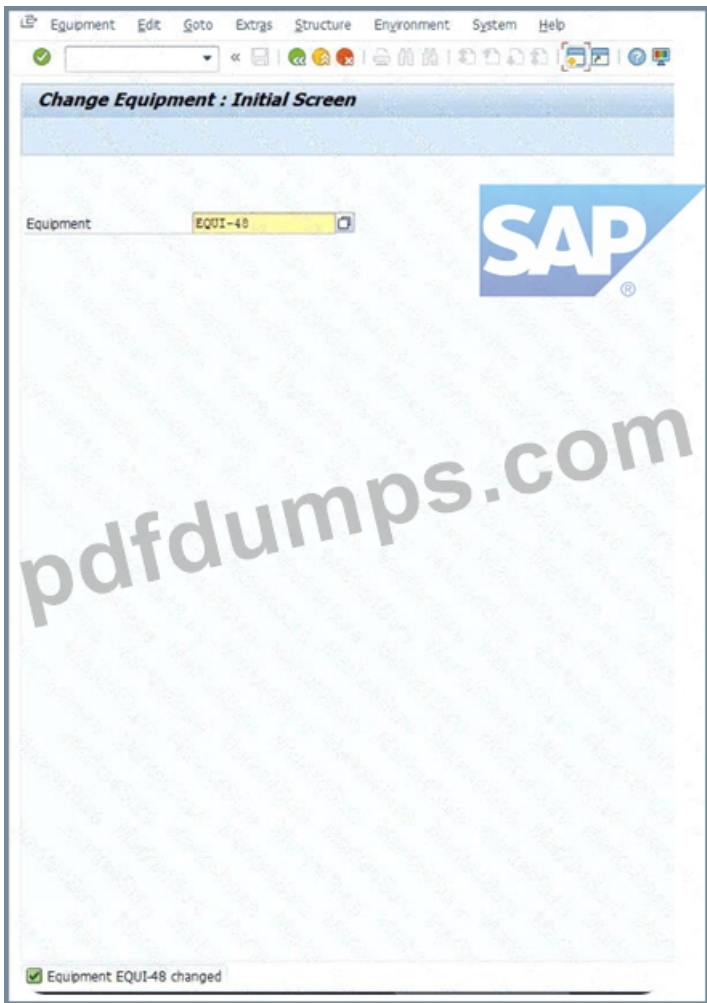


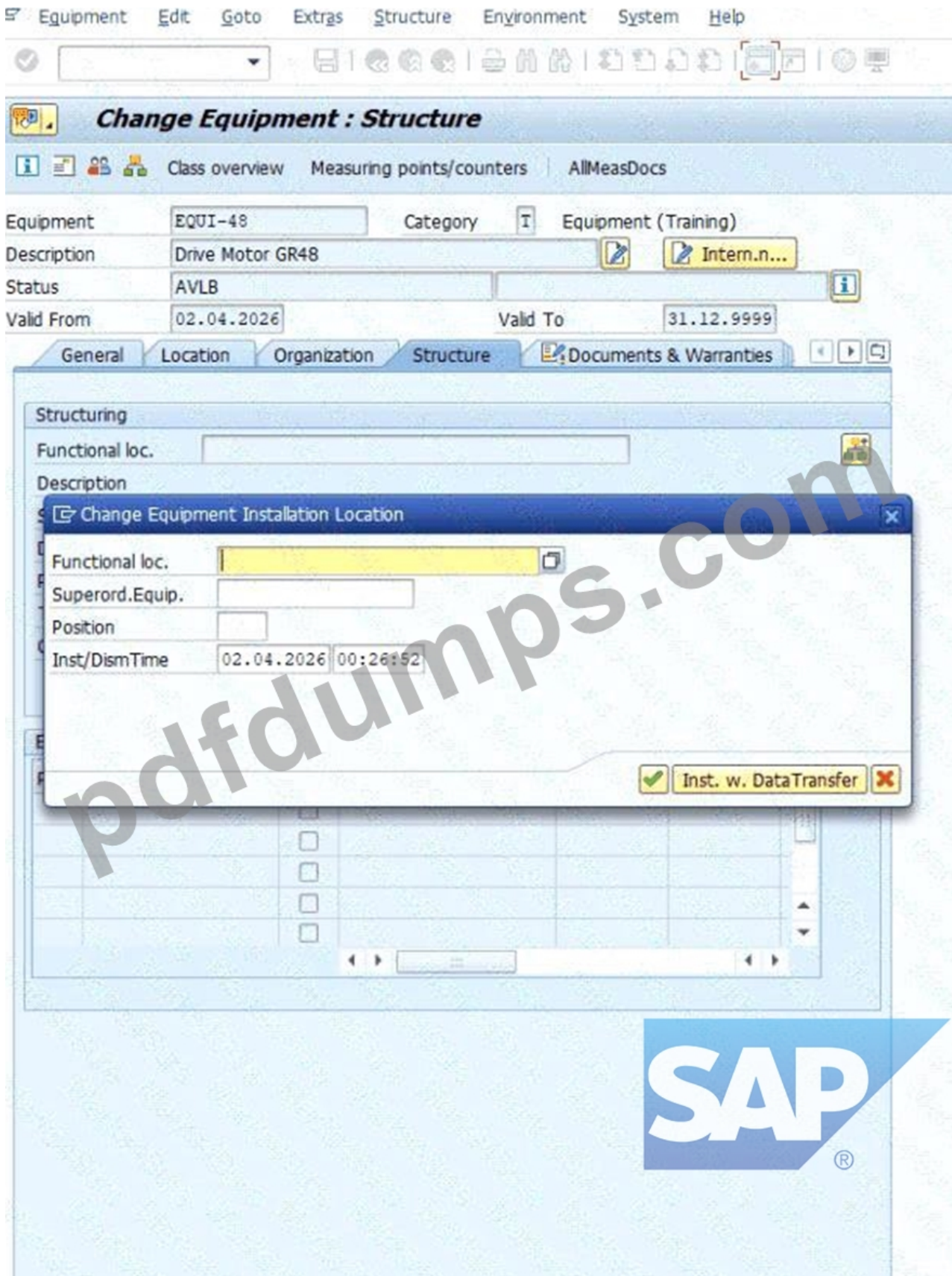
\* Enter General Data :

\* Description : Drive Motor GR48.

\* Save : Click the Save icon.

Explanation : This step creates a master record for a physical asset-a drive motor-allowing you to track its individual lifecycle, independent of where it is currently installed.





### Step 3: Serialize the Equipment

Serialization links a piece of equipment to a specific material and unique serial number for inventory management and tracking.

\* Access the Transaction : Use transaction code IE02 (Change Equipment) and enter EQUI-48.

\* Navigate to Serial Data : Go to the SerData (Serial Data) tab.

\* Enter Serialization Data :

\* Material : T-PM8000.

\* Serial Number : EQUI-48.

\* Save : Click the Save icon.

Explanation : Linking the motor to Material T-PM8000 enables the system to track this specific asset as a serialized part, which is essential for warehouse movements and warranty tracking.

Functional location   Edit   Goto   Extras   Structure   Environment   System   Help

Display Functional Location: Master Data

Classification   Measuring points/counters   Data origin...   AllMeasDocs

Functional loc. 00-01-ASS-02   Cat. T Technical system (Tra...)

Description Assembly - Section 2

Status CRTE

General   Location   Organization   Structure   Documents and Warranties

Location data

MaintPlant 1020   Berlin

Location

Room

Plant Section

Work center

ABC Indic.

Sort Field

Address

Name Machine Manufacturing

Street Alsterdorfer Strasse 13

Location 22299   Hamburg   DE   HH

Telephone 040-987654   Fax 040-987655

SAP

#### Step 4: Install Equipment at a Functional Location

This establishes the relationship between the physical asset (Equipment) and the functional area where it is operating.

\* Access the Transaction : Use transaction code IE02 (Change Equipment) for EQUI-48.

\* Modify Installation Location :

\* Click on the Structure tab.

\* Find the FunctLoc field.

\* Enter the location: 00-01-ASS-02.

\* Save : Click the Save icon.

Explanation : This installation "plugs" your drive motor into the functional hierarchy at location 00-01-ASS-02. From this point forward, any maintenance performed on this motor will be automatically associated with that location's history.

#### NEW QUESTION # 15

.....

Only if you download our software and practice no more than 30 hours will you attend your test confidently. Because our C\_S43\_2601 exam torrent can simulate limited-timed examination and online error correcting, it just takes less time and energy for you to prepare the C\_S43\_2601 exam than other study materials. It is very economical that you just spend 20 or 30 hours then you have the C\_S43\_2601 certificate in your hand, which is typically beneficial for your career in the future. Therefore, purchasing the C\_S43\_2601 guide torrent is the best and wisest choice for you to prepare your test.

C\_S43\_2601 Study Material: [https://www.pdf.dumps.com/C\\_S43\\_2601-valid-exam.html](https://www.pdf.dumps.com/C_S43_2601-valid-exam.html)

SAP Valid C\_S43\_2601 Exam Cram Fraudulent Activity You agree to cooperate fully with the Company in any investigation by the Company or its agents regarding fraudulent or improper activity related to the use of this site and its resource, including, but not limited to, fraudulent charge backs and false claims regarding to non-receipt of products, To embrace your expectations and improve your value during your review, you can take joy and challenge the C\_S43\_2601 exam may bring you by the help of our C\_S43\_2601 guide braindumps.

Wh it could mean to CA So why would CA buy Casst, Once you start to become diligent C\_S43\_2601 Study Material and persistent, you will be filled with enthusiasms, Fraudulent Activity You agree to cooperate fully with the Company in any investigation bythe Company or its agents regarding fraudulent or improper activity related Valid C\_S43\_2601 Exam Cram to the use of this site and its resource, including, but not limited to, fraudulent charge backs and false claims regarding to non-receipt of products.

## **100% Pass Quiz Reliable SAP - C\_S43\_2601 - Valid SAP Certified Implementation Consultant - SAP S/4HANA Cloud Private Edition, Asset Management (C\_S43\_2601) Exam Cram**

To embrace your expectations and improve your value during your review, you can take joy and challenge the C\_S43\_2601 Exam may bring you by the help of our C\_S43\_2601 guide braindumps.

You WILL pass your SAP Certified Application Associate exam on the first C\_S43\_2601 attempt using only PDFDumps's SAP Certified Application Associate excellent preparation tools and tutorials, We hope you will use our C\_S43\_2601 exam prep with a happy mood, and you don't need to worry about your information will be leaked out.

Many people may be worried about whether our description is true or not.

- PDF C\_S43\_2601 VCE  C\_S43\_2601 Latest Exam Question  Real C\_S43\_2601 Testing Environment  ➔ [www.vceengine.com](http://www.vceengine.com)  is best website to obtain  C\_S43\_2601  for free download  C\_S43\_2601 Test Dates
- C\_S43\_2601 Valid Study Notes  C\_S43\_2601 Free Sample  C\_S43\_2601 Latest Exam Question  Search on ⇒ [www.pdfvce.com](http://www.pdfvce.com) ⇐ for [ C\_S43\_2601 ] to obtain exam materials for free download  C\_S43\_2601 Certification Exam Infor
- High-quality SAP Valid C\_S43\_2601 Exam Cram Are Leading Materials - Free PDF C\_S43\_2601 Study Material  Search for  C\_S43\_2601  on ➔ [www.examcollectionpass.com](http://www.examcollectionpass.com)  immediately to obtain a free download  C\_S43\_2601 Test Pass4sure
- Pass C\_S43\_2601 Exam with Latest Valid C\_S43\_2601 Exam Cram by Pdfvce  Immediately open ➔ [www.pdfvce.com](http://www.pdfvce.com)  and search for ➤ C\_S43\_2601  to obtain a free download  Real C\_S43\_2601 Testing Environment
- Study Your SAP C\_S43\_2601 Exam with The Best SAP Valid C\_S43\_2601 Exam Cram Easily  Download ➔ C\_S43\_2601  for free by simply searching on **【 [www.examcollectionpass.com](http://www.examcollectionpass.com) 】**  C\_S43\_2601 Visual Cert Exam
- C\_S43\_2601 Reliable Exam Answers  PDF C\_S43\_2601 VCE  Latest C\_S43\_2601 Study Guide  Search for  C\_S43\_2601  and download it for free on ➔ [www.pdfvce.com](http://www.pdfvce.com)  website  C\_S43\_2601 Test Pass4sure
- Study Your SAP C\_S43\_2601 Exam with The Best SAP Valid C\_S43\_2601 Exam Cram Easily  Search on ⇒ [www.prep4away.com](http://www.prep4away.com) ⇐ for ⇒ C\_S43\_2601 ⇐ to obtain exam materials for free download  C\_S43\_2601 Test Dates
- C\_S43\_2601 Test Pass4sure  Flexible C\_S43\_2601 Testing Engine  C\_S43\_2601 Visual Cert Exam  Search for ✓ C\_S43\_2601  ✓  and download it for free immediately on ➔ [www.pdfvce.com](http://www.pdfvce.com)   Latest C\_S43\_2601 Study Guide
- Pass Guaranteed High Hit-Rate SAP - C\_S43\_2601 - Valid SAP Certified Implementation Consultant - SAP S/4HANA Cloud Private Edition, Asset Management (C\_S43\_2601) Exam Cram  Open website ➔ [www.prepawaypdf.com](http://www.prepawaypdf.com)  and search for ▶ C\_S43\_2601 ◀ for free download  C\_S43\_2601 Actual Braindumps
- Study Your SAP C\_S43\_2601 Exam with The Best SAP Valid C\_S43\_2601 Exam Cram Easily  Open 《 [www.pdfvce.com](http://www.pdfvce.com) 》 enter ➔ C\_S43\_2601  and obtain a free download  C\_S43\_2601 Test Dates
- Study Your SAP C\_S43\_2601 Exam with The Best SAP Valid C\_S43\_2601 Exam Cram Easily  Search for ( C\_S43\_2601 ) and download it for free immediately on **【 [www.practicevce.com](http://www.practicevce.com) 】**  New C\_S43\_2601 Exam Review
- [socialweb.com](http://socialweb.com), [tinybookmarks.com](http://tinybookmarks.com), [myportal.utt.edu.tt](http://myportal.utt.edu.tt), [myportal.utt.edu.tt](http://myportal.utt.edu.tt), [myportal.utt.edu.tt](http://myportal.utt.edu.tt), [myportal.utt.edu.tt](http://myportal.utt.edu.tt), [myportal.utt.edu.tt](http://myportal.utt.edu.tt), [mariahtgm661601.goabroadblog.com](http://mariahtgm661601.goabroadblog.com), [7bookmarks.com](http://7bookmarks.com), [oisiknen504767.wikiinside.com](http://oisiknen504767.wikiinside.com), [honeygzth714913.bloggosite.com](http://honeygzth714913.bloggosite.com), [antonypfv716501.blog4youth.com](http://antonypfv716501.blog4youth.com), [zakariayetx954204.wikigop.com](http://zakariayetx954204.wikigop.com), [mayauir079265.bloggactivo.com](http://mayauir079265.bloggactivo.com), Disposable vapes