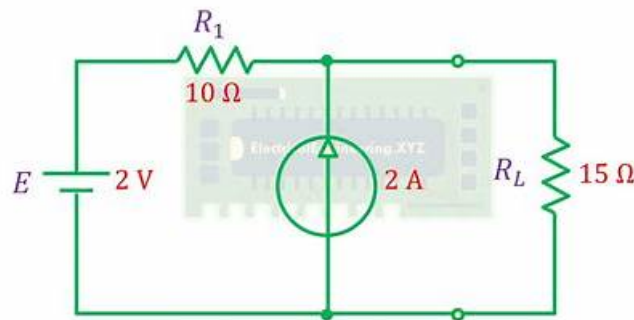


# Real NGFW-Engineer Questions | NGFW-Engineer Reliable Test Labs



Step by Step Solution in description link

ElectricalEngineering.XYZ

**Find Norton  
Equivalent of Circuit**

ElectricalEngineering.XYZ

P.S. Free & New NGFW-Engineer dumps are available on Google Drive shared by TrainingDumps: <https://drive.google.com/open?id=16S6F783JotHKZPYpyHUj-nqSWglG7iP9>

Once the clients order our NGFW-Engineer cram training materials we will send the NGFW-Engineer exam questions quickly by mails. The clients abroad only need to fill in correct mails and then they get our NGFW-Engineer training guide conveniently. Our NGFW-Engineer cram training materials provide the version with the language domestically and the version with the foreign countries' language so that the clients at home and abroad can use our NGFW-Engineer Study Tool conveniently. And after study for 20 to 30 hours, you can pass the NGFW-Engineer exam with ease.

Here, the TrainingDumps empathizes with them for the extreme frustration they undergo due to not finding updated and actual Palo Alto Networks NGFW-Engineer exam dumps. It helps them by providing the exceptional Palo Alto Networks NGFW-Engineer Questions to get the prestigious Palo Alto Networks NGFW-Engineer certificate.

>> Real NGFW-Engineer Questions <<

## 2026 Palo Alto Networks NGFW-Engineer: Latest Real Palo Alto Networks Next-Generation Firewall Engineer Questions

Perhaps the few qualifications you have on your hands are your greatest asset, and the NGFW-Engineer test prep is to give you that capital by passing exam fast and obtain certification soon. Don't doubt about it. More useful certifications mean more ways out. If you pass the NGFW-Engineer exam, you will be welcome by all companies which have relating business with NGFW-Engineer exam torrent. Even some one can job-hop to this international company. Opportunities are reserved for those who are prepared.

## Palo Alto Networks NGFW-Engineer Exam Syllabus Topics:

Topic	Details
Topic 1	<ul style="list-style-type: none"><li>Integration and Automation: This section measures the skills of Automation Engineers in deploying and managing Palo Alto Networks NGFWs across various environments. It includes the installation of PA-Series, VM-Series, CN-Series, and Cloud NGFWs. The use of APIs for automation, integration with third-party services like Kubernetes and Terraform, centralized management with Panorama templates and device groups, as well as building custom dashboards and reports in Application Command Center (ACC) are key topics.</li></ul>
Topic 2	<ul style="list-style-type: none"><li>PAN-OS Networking Configuration: This section of the exam measures the skills of Network Engineers in configuring networking components within PAN-OS. It covers interface setup across Layer 2, Layer 3, virtual wire, tunnel interfaces, and aggregate Ethernet configurations. Additionally, it includes zone creation, high availability configurations (active<ul style="list-style-type: none"><li>active and active</li><li>passive), routing protocols, and GlobalProtect setup for portals, gateways, authentication, and tunneling. The section also addresses IPSec, quantum-resistant cryptography, and GRE tunnels.</li></ul></li></ul>
Topic 3	<ul style="list-style-type: none"><li>PAN-OS Device Setting Configuration: This section evaluates the expertise of System Administrators in configuring device settings on PAN-OS. It includes implementing authentication roles and profiles, and configuring virtual systems with interfaces, zones, routers, and inter-VSYS security. Logging mechanisms such as Strata Logging Service and log forwarding are covered alongside software updates and certificate management for PKI integration and decryption. The section also focuses on configuring Cloud Identity Engine User-ID features and web proxy settings.</li></ul>

## Palo Alto Networks Next-Generation Firewall Engineer Sample Questions (Q25-Q30):

### NEW QUESTION # 25

Which zone type allows traffic between zones in different virtual systems (VSYS), without the traffic leaving the firewall?

- A. External
- B. Isolated
- **C. Transient**
- D. Internal

**Answer: C**

Explanation:

The Transient zone type is used to allow traffic between zones in different virtual systems (VSYS) on a Palo Alto Networks firewall without the traffic leaving the firewall. It provides a way for virtual systems to communicate with each other by acting as a temporary or intermediary zone. Traffic can pass through the firewall between the virtual systems without requiring physical interfaces or leaving the device.

### NEW QUESTION # 26

By default, which type of traffic is configured by service route configuration to use the management interface?

- A. IPSec tunnel
- B. Security zone
- **C. Autonomous Digital Experience Manager (ADEM)**
- D. Virtual system (VSYS)

**Answer: C**

Explanation:

By default, the Autonomous Digital Experience Manager (ADEM) traffic is configured to use the management interface in a Palo Alto Networks firewall. The management interface is typically used for management-related traffic, such as monitoring and logging.

and it is configured to handle ADEM-related traffic for the optimal performance of digital experience monitoring features. This default configuration helps ensure that ADEM traffic does not interfere with regular traffic that may traverse other interfaces, such as traffic from security zones or IPSec tunnels.

#### NEW QUESTION # 27

In a hybrid cloud deployment, what is the primary function of Ansible in managing Palo Alto Networks NGFWs?

- A. It provides a web interface for managing NGFW hardware clusters.
- **B. It automates NGFW policy updates and configurations through playbooks.**
- C. It facilitates dynamic updates to NGFW threat databases.
- D. It enables centralized log collection and correlation for NGFWs.

**Answer: B**

Explanation:

In a hybrid cloud deployment, Ansible is primarily used for automating configurations and policy updates on Palo Alto Networks Next-Generation Firewalls (NGFWs). Through the use of playbooks, Ansible can automate the process of deploying security policies, updating configurations, and managing the firewall's state, which enhances efficiency and consistency across multiple NGFWs in a large or hybrid cloud environment.

#### NEW QUESTION # 28

When deploying Palo Alto Networks NGFWs in a cloud service provider (CSP) environment, which method ensures high availability (HA) across multiple availability zones?

- A. Deploying Ansible scripts for zone-specific scaling
- B. Implementing Terraform templates for redundancy within one availability zone
- **C. Using load balancer and health probes**
- D. Configuring active/active HA

**Answer: C**

Explanation:

To ensure high availability (HA) across multiple availability zones (AZs) in a cloud service provider (CSP) environment, using a load balancer with health probes is a recommended method. This setup ensures that traffic can be directed to the healthy NGFW instances across multiple availability zones. If one NGFW instance or availability zone goes down, the load balancer can redirect traffic to the available instance(s) in other zones, providing redundancy and maintaining service availability.

#### NEW QUESTION # 29

What are the phases of the Palo Alto Networks AI Runtime Security: Network Intercept solution?

- A. Policy Generation, Discovery, Enforcement, Logging
- B. Profiling, Policy Generation, Enforcement, Reporting
- C. Scanning, Isolation, Whitelisting, Logging
- **D. Discovery, Deployment, Detection, Prevention**

**Answer: D**

Explanation:

The phases of the Palo Alto Networks AI Runtime Security: Network Intercept solution are designed to help identify and protect against potential threats in real time by using AI to detect and prevent malicious activities within the network.

Discovery: Identifying applications, services, and behaviors within the network to understand baseline activity.

Deployment: Implementing the solution into the network and integrating with existing security measures.

Detection: Monitoring traffic and activities to identify abnormal or malicious behavior.

Prevention: Taking action to stop threats once detected, such as blocking malicious traffic or stopping exploit attempts.

#### NEW QUESTION # 30

In order to cater to different kinds of needs of candidates, we offer three versions for NGFW-Engineer training materials for you to select. Each version has its own advantage, and you can choose the most suitable one in accordance with your own needs. NGFW-Engineer PDF version is printable, and you can print it into paper if you like. NGFW-Engineer Soft test engine can stimulate the real exam environment, so that you can build up your confidence for the exam. NGFW-Engineer Online test engine is convenient and easy to learn, and it supports offline proactive. You can also have a review of what you have learned through NGFW-Engineer Online test engine.

[illegible]

P.S. Free & New NGFW-Engineer dumps are available on Google Drive shared by TrainingDumps: <https://drive.google.com/open?id=16S6F783JotHKZPYpyHUi-nqSWglG7iP9>