

350-501 Customized Lab Simulation & Best 350-501 Study Material



P.S. Free 2023 ISC SSCP dumps are available on Google Drive shared by Actual4Exams:
https://drive.google.com/open?id=1zPn8xYhpeWScXF_Wa06ug3AQjUV46TBW

ISC SSCP certification exams play a significant role to verify skills, experience, and knowledge in a specific technology. Enrollment in the System Security Certified Practitioner (SSCP) SSCP is open to everyone. Participants in the System Security Certified Practitioner (SSCP) SSCP come from all over the world and receive the credentials for the ISC SSCP. They can quickly advance their careers in the fiercely competitive market and benefit from certification after earning the System Security Certified Practitioner (SSCP) SSCP badge.

The SSCP System Security Certified Practitioner (SSCP) practice questions are designed by experienced and qualified SSCP exam trainers. They have the expertise, knowledge, and experience to design and maintain the top standard of SSCP System Security Certified Practitioner (SSCP) exam dumps. So rest assured that with the SSCP System Security Certified Practitioner (SSCP) exam real questions you can not only ace your SSCP System Security Certified Practitioner (SSCP) exam dumps preparation but also get deep insight knowledge about ISC SSCP exam topics. So download SSCP System Security Certified Practitioner (SSCP) exam questions now and start this journey.

[>> SSCP Latest Exam Pass4sure <<](#)

Customized ISC SSCP Lab Simulation, Reliable SSCP Dumps Book

The pass rate is 98.75% for SSCP exam materials, and we can ensure you that you can pass the exam just one time if you choose us. SSCP exam materials contain most of knowledge points for the

[SSCP Latest Exam Pass4sure - Customized SSCP Lab Simulation](#)

BONUS!!! Download part of SureTorrent 350-501 dumps for free: <https://drive.google.com/open?id=1tc4YzmtgmgGMYEwKC8N2yQVIAG5GuVnF>

As we all know, famous companies use certificates as an important criterion for evaluating a person when recruiting. The number of certificates you have means the level of your ability. 350-501 practice materials are an effective tool to help you reflect your abilities. We also hire a team of experts, and the content of 350-501 question torrent is all high-quality test guidance materials that have been accepted by experienced professionals. 350-501 practice materials will be the most professional and dedicated tutor you have ever met.

Cisco 350-501 exam is intended for individuals who are interested in pursuing a career in service provider networking. 350-501 exam covers a range of topics, including network automation, virtualization, security, and quality of service. Successful completion of 350-501 Exam will demonstrate an individual's expertise in these areas and their ability to manage and operate service provider networks.

[>> 350-501 Customized Lab Simulation <<](#)

Latest 350-501 Customized Lab Simulation offer you accurate Best Study Material | Implementing and Operating Cisco Service Provider Network

Core Technologies

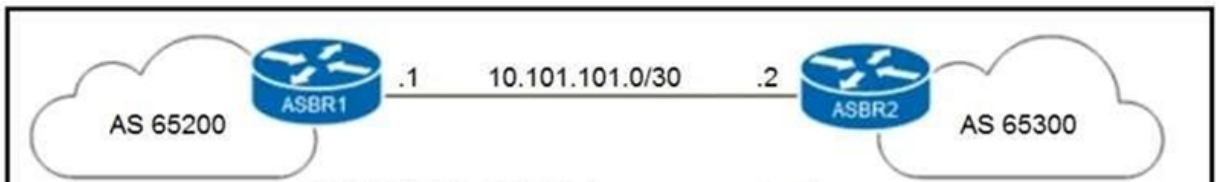
Normally a haphazard IT exam will become your power of progress which may change your whole life. As one of Cisco important certifications 350-501 exam is an important exam. Our 350-501 exam learning materials are updated with latest official exam change, SureTorrent will release new version of 350-501 in first time. If you are still hesitating about purchasing exam learning materials, you can consider the free demo materials in our website for your reference.

Cisco 350-501 certification exam is a challenging exam that requires a lot of preparation and study. However, achieving this certification can be a major career boost for IT professionals working in the service provider industry. Implementing and Operating Cisco Service Provider Network Core Technologies certification demonstrates the candidate's expertise in service provider networking technologies and can open up new career opportunities and higher salaries. Additionally, the certification is recognized globally and can help IT professionals stand out in a crowded job market.

In terms of the exam format, the Cisco 350-501 consists of around 60-70 questions that need to be completed within a time limit of 120 minutes. These questions are a mix of multiple-choice, drag and drop, and simulation-based questions, which aim to test the candidate's ability to apply their knowledge to real-world scenarios. To pass the exam, candidates need to achieve a score of at least 825 out of 1000.

Cisco Implementing and Operating Cisco Service Provider Network Core Technologies Sample Questions (Q82-Q87):

NEW QUESTION # 82



```
RE/0/0/CPU0:ASBR1#show run router bgp
Tue Jun 2 07:18:58.154 UTC
router bgp 65200
 address-family ipv4 unicast
 !
 neighbor 10.101.101.2
  remote-as 65300
 address-family ipv4 unicast
  route-policy BGP-CUSTOMER-IN (ASN-65300) in
  maximum-prefix 100 90
  route-policy BGP-DEFAULT-ONLY-OUT out
  default-originate
  soft-reconfiguration inbound always
 !
 !
RE/0/0/CPU0:ASBR1#show running-config prefix-set ASN-65300
Tue Jun 2 07:09:28.863 UTC
prefix-set ASN-65300
 172.16.3.0/24
end-set
!
```

Refer to the exhibit. A network engineer is implementing a standard customer route-policy on router ASBR1 with these requirements:

- * It must accept only customer-assigned prefixes.
- * It must preserve customer-advertised BGP communities.
- * It must set the local-preference to 110 for all prefixes.
- * It must attach the ORIGIN-PE and LOCAL-CITY communities to all accepted prefixes.

Which route policy must the engineer implement on ASBR1 to satisfy the requirements?

- A.


```

route-policy BGP-CUSTOMER-IN($CUSTOMER_PREFIX)
  if destination in $CUSTOMER_PREFIX then
    done
  else
    drop
  endif
  set local-preference 110
  set community ORIGINATION-PE additive
  set community LOCAL-CITY additive
end-policy

```

```

route-policy BGP-CUSTOMER-IN($CUSTOMER_PREFIX)
  if destination in $CUSTOMER_PREFIX then
    done
  else
    drop
  endif
  set local-preference 110
  set community ORIGINATION-PE
  set community LOCAL-CITY additive
end-policy

```

- B.

```

route-policy BGP-CUSTOMER-IN($CUSTOMER_PREFIX)
  if destination in $CUSTOMER_PREFIX then
    pass
  else
    drop
  endif
  set local-preference 110
  set community ORIGINATION-PE additive
  set community LOCAL-CITY additive
end-policy

```

- C.

- D.


```

route-policy BGP-CUSTOMER-IN($CUSTOMER_PREFIX)
  if destination in $CUSTOMER_PREFIX then
    pass
  else
    drop
  endif
  set local-preference 110
  set community ORIGINATION-PE
  set community LOCAL-CITY additive
end-policy

```

Answer: C

Explanation:

Section: Networking

NEW QUESTION # 83

Refer to the exhibit. A network operator is attempting to configure an IS-IS adjacency between two routers, but the adjacency cannot be established. To troubleshoot the problem, the operator collects this debugging output. Which interface are misconfigured on these routers?

```

RP/0/0/CPU0:R2#debug isis adjacencies
RP/0/0/CPU0:Apr 2 20:57:00.421 : isis[1010]: RECV P2P ITH (L2)
from GigabitEthernet0/0/0/0 SNPA {a16.3ebe.a7bc: System ID R2,
Holdtime 30, length 1429
RP/0/0/CPU0:Apr 2 20:57:01.761 : isis[1010]: SEND P2P ITH (L1)
on GigabitEthernet0/0/0/0: Holdtime, 30s, length 41

```

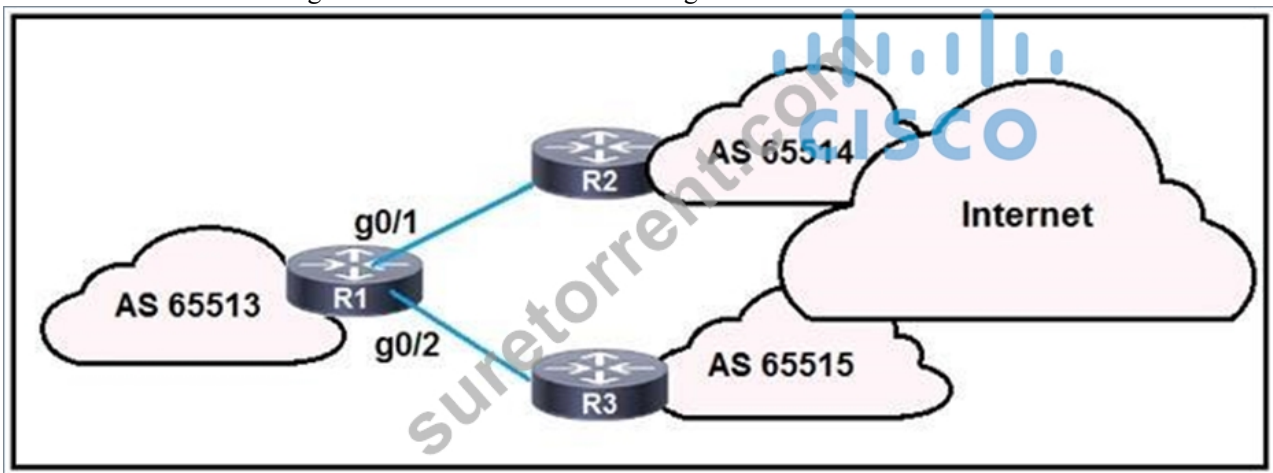
- Ⓐ The peer router interface is configured as Level 1 only, and the R2 interface is configured as Level 2 only.
- Ⓑ The R2 interface is configured as Level 1 only, and the peer router interface is configured as Level 2 only.
- Ⓒ The R2 interface is configured as point-to-point, and the peer router interface is configured as multipoint.
- Ⓓ The peer router interface is configured as point-to-point, and the R2 interface is configured as multipoint.

- A. Option B
- B. Option C
- C. Option D
- D. Option A

Answer: A

NEW QUESTION # 84

Refer to the exhibit. R1 is connected to two service providers and is under a DDoS attack. Which statement about this design is true if uRPF in strict mode is configured on both interfaces?

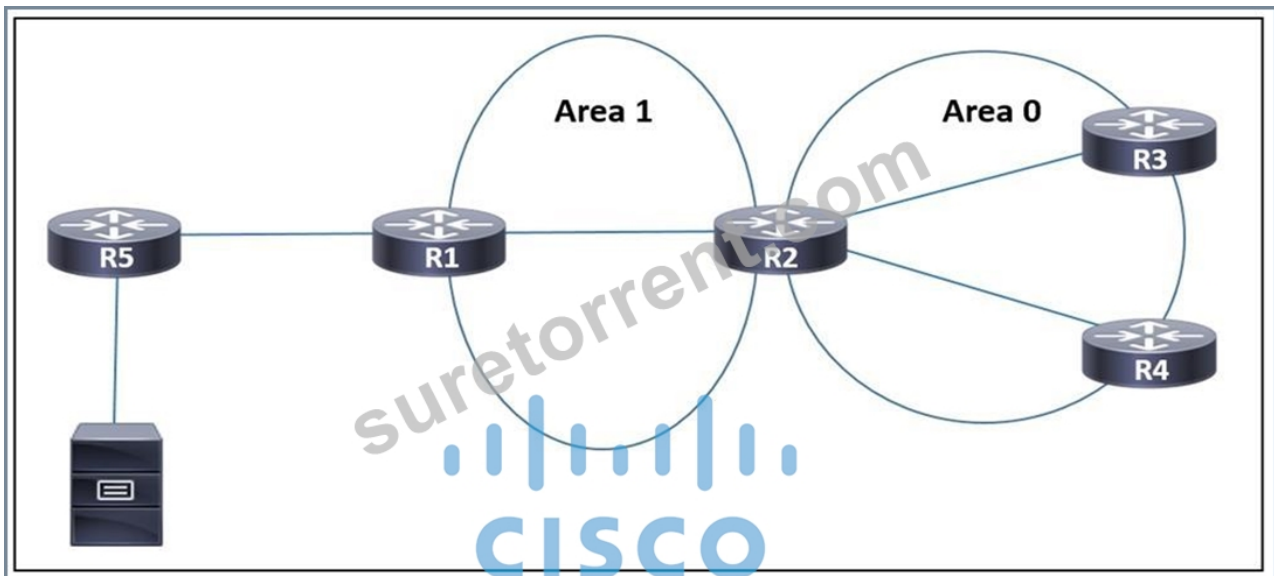


- A. R1 drops all traffic that ingresses either interface that has a FIB entry that exits a different interface
- B. R1 drops destination addresses that are routed to a null interface on the router
- C. R1 accepts source addresses on interface gigabitethernet0/1 that are private addresses
- D. R1 permits asymmetric routing as long as the AS-RATH attribute entry matches the connected AS

Answer: A

NEW QUESTION # 85

Refer to the exhibit. EIGRP is running between routers R5 and R1, and OSPF is used in the rest of the network. Users in a network attached to router R3 need to access a server connected to R5. Which task must the engineer perform so that only the users attached to R3 are able to access the server, but no other network is shared to OSPF?

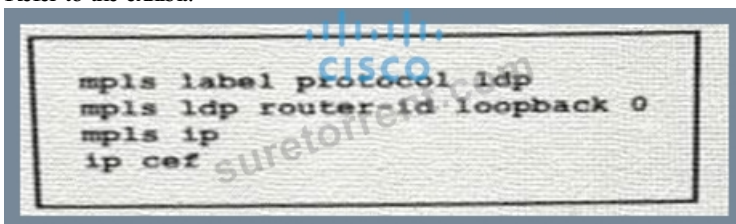


- A. Configure an OSPF virtual link between R1 and R3 to route traffic between the two areas.
- B. Configure R1 as a stub router for EIGRP and OSPF so that only the default route is shared
- **C. Configure redistribution using route maps to filter the routes that are shared**
- D. Configure redistribution using an offset list to filter the routes that are shared.

Answer: C

NEW QUESTION # 86

Refer to the exhibit:



A network operator working for service provider with an employee id 3715 15:021 applied this configuration to a router. Which additional step should the engineer use to enable LDP?

- A. Configure the both keyword to enable LDP globally
- **B. Enable MPLS LDP on the interface**
- C. Disable Cisco Express Forwarding globally
- D. Delete the static router ID

Answer: B

Explanation:

The configuration snippet shows that MPLS and LDP are configured globally but not enabled on an interface.

The commands include "mpls label protocol ldp," "mpls ldp router-id loopback 0," and "mpls ip," which are necessary for global settings. However, to establish LDP neighbors and exchange labels, LDP must be enabled on the specific interface where it's needed.

:

Implementing and Operating Cisco Service Provider Network Core Technologies (SPCOR) Cisco SPCOR Training resources available on the Cisco Learning Network Store.

NEW QUESTION # 87

.....

Best 350-501 Study Material: <https://www.suretorrent.com/350-501-exam-guide-torrent.html>

