

# Valid Dumps Desktop-Specialist Sheet | Desktop-Specialist Latest Practice Questions



P.S. Free 2025 Tableau Desktop-Specialist dumps are available on Google Drive shared by GuideTorrent:  
<https://drive.google.com/open?id=1vhfP8RoRH0bF5YJnJQuHUuFixve3OVA1>

Do you feel headache looking at so many IT certification exams and so many exam materials? What should you do? Which materials do you choose? If you don't know how to choose, I choose your best exam materials for you. You can choose to attend Tableau Desktop-Specialist exam which is the most popular in recent. Getting Desktop-Specialist certificate, you will get great benefits. Moreover, to effectively prepare for the exam, you can select GuideTorrent Tableau Desktop-Specialist certification training dumps which are the best way to pass the test.

Tableau Desktop-Specialist Certification Exam is a popular certification exam that measures one's knowledge of Tableau Desktop Specialist. Tableau Desktop is a data visualization tool that is used to analyze data, create interactive visualizations, and share insights with others. Tableau Desktop Specialist Exam certification exam is designed to test the candidate's proficiency in using Tableau Desktop to perform data analysis, create visualizations, and build dashboards.

Tableau Desktop-Specialist exam is one of the most popular certification exams for professionals who are looking to enhance their skills and knowledge in data visualization and analysis. Desktop-Specialist Exam is designed to test the candidate's ability to use Tableau Desktop, a powerful data analysis and visualization tool that helps organizations make data-driven decisions. Passing Desktop-Specialist exam demonstrates the candidate's proficiency in using Tableau Desktop software and ability to create visualizations, build dashboards, and work with data.

>> Valid Dumps Desktop-Specialist Sheet <<

## Tableau Desktop Specialist Exam Training Pdf Vce & Desktop-Specialist Exam Study Guide & Tableau Desktop Specialist Exam Free Practice Pdf

So many candidates have encountered difficulties in preparing to pass the Desktop-Specialist exam. But our study materials will help candidates to pass the exam easily. Our Desktop-Specialist guide questions can provide statistics report function to help the learners to find weak links and deal with them. The Desktop-Specialist Test Torrent boost the function of timing and simulating the exam. They set the timer to simulate the exam and help the learners adjust the speed and keep alert. So the Desktop-Specialist guide questions are very convenient for the learners to master and pass the exam.

Tableau Desktop-Specialist Certification Exam is a computer-based exam that consists of multiple-choice questions, requiring candidates to select the best answer from a list of options. Desktop-Specialist exam is timed, with a total of 2 hours to complete. The passing score for the exam is 75%. Desktop-Specialist Exam Fee varies depending on the region, but it is typically around \$250.

## Tableau Desktop Specialist Exam Sample Questions (Q304-Q309):

### NEW QUESTION # 304

\_\_\_\_\_ is a snapshot of the data that Tableau stores locally. Good for very large datasets of which we only need few fields.

- A. Tableau Data Source (.tds)
- B. Tableau Packaged Workbook (.twbx)
- C. Tableau Data Extract (.tde)

- D. Tableau Workbook (.twb)

**Answer: C**

Explanation:

Tableau Data Extract (TDE) is a snapshot of the data that Tableau stores locally. Good for very large datasets of which we only need few fields. Performance is optimised because it queries its own database engine instead of the local data source.

When you create an extract of your data, you can reduce the total amount of data by using filters and configuring other limits. After you create an extract, you can refresh it with data from the original data. When refreshing the data, you have the option to either do a full refresh, which replaces all of the contents in the extract, or you can do an incremental refresh, which only adds rows that are new since the previous refresh.

Extracts are advantageous for several reasons:

- 1) Supports large data sets: You can create extracts that contain billions of rows of data.
- 2) Fast to create: If you're working with large data sets, creating and working with extracts can be faster than working with the original data.
- 3) Help improve performance: When you interact with views that use extract data sources, you generally experience better performance than when interacting with views based on connections to the original data.
- 4) Support additional functionality: Extracts allow you to take advantage of Tableau functionality that's not available or supported by the original data, such as the ability to compute Count Distinct.
- 5) Provide offline access to your data: Extracts allow you to save and work with the data locally when the original data is not available. For example, when you are traveling.

### NEW QUESTION # 305

Broadly speaking, after an importing a dataset in Tableau Desktop, all fields in it are broken down into

- A. Numbers and Headers
- **B. Dimensions and Measures**
- C. Labels and Values
- D. Rows and Columns

**Answer: B**

Explanation:

Explanation

When you connect to a new data source, Tableau assigns each field in the data source as dimension or measure in the Data pane, depending on the type of data the field contains. You use these fields to build views of your data.

Further,

#### About data field roles and types

Data fields are made from the columns in your data source. Each field is automatically assigned a data type (such as integer, string, date), and a role: Discrete Dimension or Continuous Measure (more common), or Continuous Dimension or Discrete Measure (less common).

- *Dimensions* contain qualitative values (such as names, dates, or geographical data). You can use dimensions to categorize, segment, and reveal the details in your data. Dimensions affect the level of detail in the view.
- *Measures* contain numeric, quantitative values that you can measure. Measures can be aggregated. When you drag a measure into the view, Tableau applies an aggregation to that measure (by default).

### NEW QUESTION # 306

Download the Dataset from:

<https://drive.google.com/file/d/12AYHfIPWkwBmVH0zbunOURgUX6Az00Rw/view?usp=sharing> Using the Time Series Table, create a line chart to show Sales over time. Which Month and Year witnessed the lowest Sales?

- A. September 2017

- B. January 2018
- C. March 2018
- D. December 2017

**Answer: B**

Explanation:

Follow the steps to get the correct answer : January 2018

**Connections**

- Retail-Sales-Data (Microsoft Excel)

**Sheets**

- ☐ Use Data Interpreter
- Geo Data
- Time Series**
- New Union

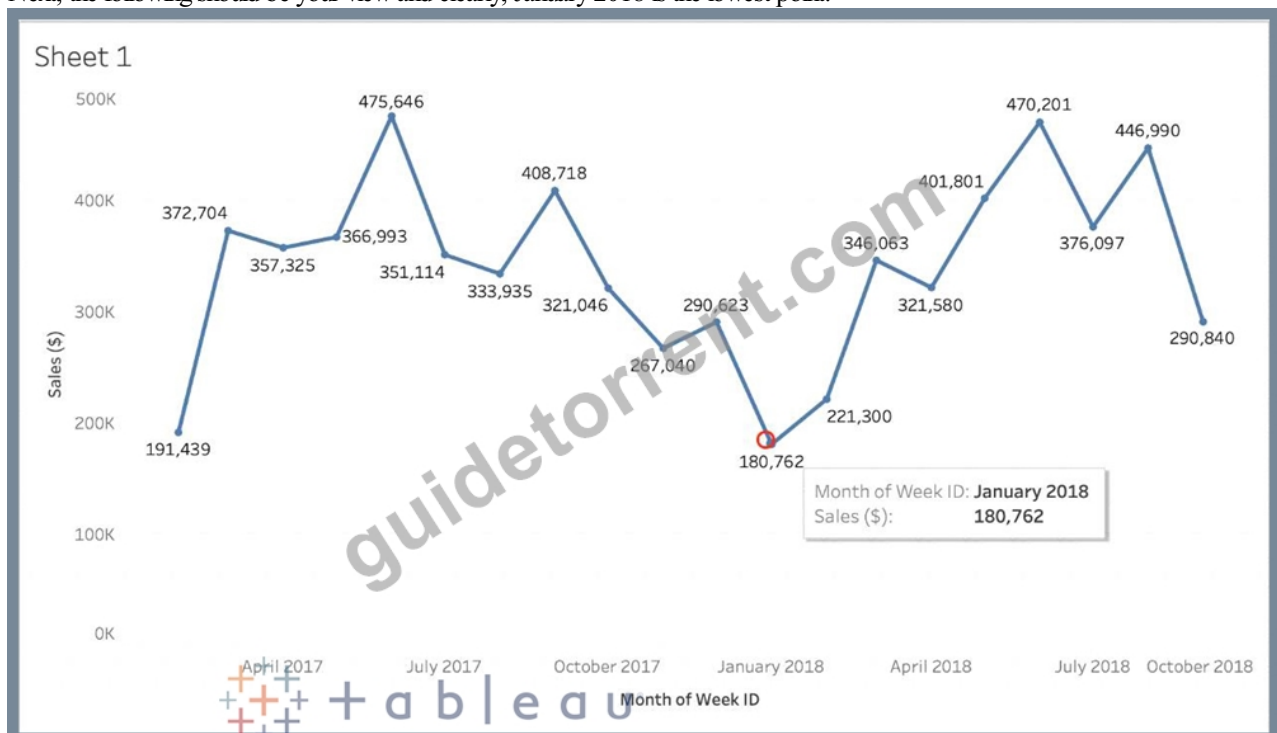
**Time Series (Retail-Sales-Data)**

Sort fields: Data source order

Time Series	Time Series	Time Series
Item Number ID	Assortment	Week ID

We are talking about dates, so use the Time series sheet as follows:

Next, the following should be your view and clearly, January 2018 is the lowest point:



Read more about dates:

<https://interworks.com/blog/rcurtis/2017/01/30/tableau-deep-dive-dates-introduction-dates/>

### NEW QUESTION # 307

Tableau will automatically create a hierarchy for which two kinds of data? Choose two.

- A. Geographic
- B. String
- C. Date
- D. Date & Time

**Answer: B,D**

Explanation:

Tableau will automatically create a hierarchy for date and geographic data. A hierarchy is a way of organizing data into different levels of detail. For example, a date hierarchy can have year, quarter, month, and day levels.

A geographic hierarchy can have country, state, city, and zip code levels. Tableau recognizes date and geographic data based on their data types and formats, and creates hierarchies for them by default. Tableau does not automatically create hierarchies for date & time or string data<sup>3</sup>

### NEW QUESTION # 308

How can you change the Default Aggregation for a measure in Tableau?

- A. By right clicking the measure -> Default properties and choosing Aggregation
- B. By changing its properties manually every time we need to use it
- C. By right clicking the dimension -> Default properties and choosing Aggregation
- D. By double clicking on the measure, and then choosing Window -> Default Aggregation

**Answer: D**

Explanation:

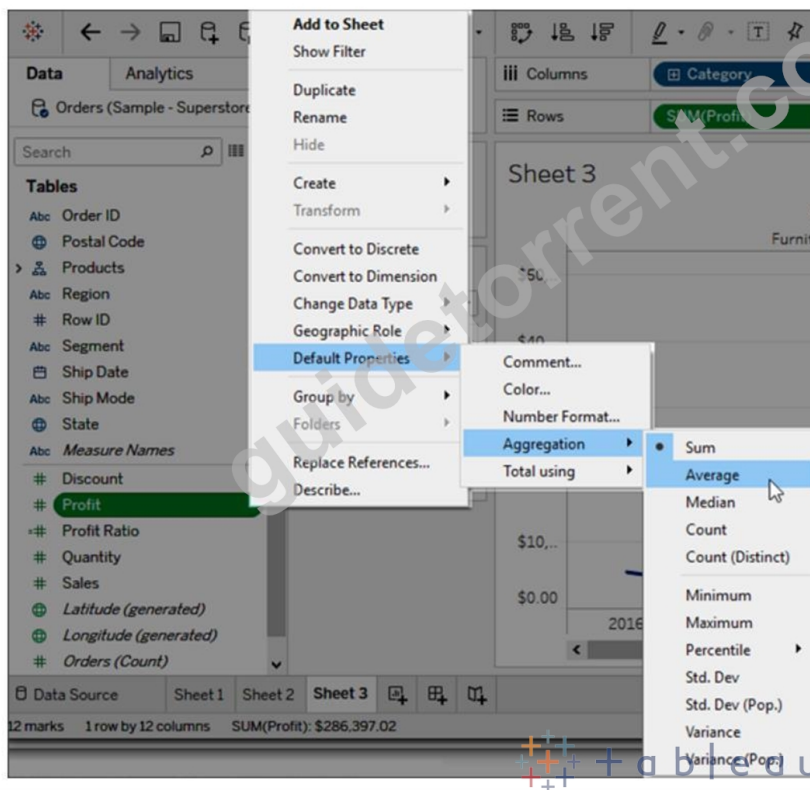
Explanation

According to the official Tableau documentation:

## Set the default aggregation for a measure

You can specify a default aggregation for any measure. The default aggregation will be used automatically when the measure is first totaled in the view.

1. Right-click (control-click on a Mac) any measure in the Data pane and select **Default Properties > Aggregation**.
2. In the Aggregation list, select an aggregation.



Dimensions don't have aggregation properties, and adding properties manually each time defeats the whole DEFAULT aggregation purpose. Window tab doesn't have any default aggregation option!

### NEW QUESTION # 309

.....

**Desktop-Specialist Latest Practice Questions:** <https://www.guidetorrent.com/Desktop-Specialist-pdf-free-download.html>

- 2026 Valid Desktop-Specialist: Valid Dumps Tableau Desktop Specialist Exam Sheet ☀ Open website ☀ [www.vce4dumps.com](http://www.vce4dumps.com) ☀ and search for 《 Desktop-Specialist 》 for free download ☀ Test Desktop-Specialist Pattern
- Online Desktop-Specialist Test ☀ Test Desktop-Specialist Lab Questions ☀ New Desktop-Specialist Exam Cram ☀ Download ⇒ Desktop-Specialist ⇐ for free by simply entering ► [www.pdfvce.com](http://www.pdfvce.com) ◀ website ☀ New Desktop-Specialist Exam Guide
- Provides you with an exam-simulated environment to relieve Tableau Desktop-Specialist exam stress ☀ Open website [ [www.examcollectionpass.com](http://www.examcollectionpass.com) ] and search for 「 Desktop-Specialist 」 for free download ☀ Detailed Desktop-Specialist Study Plan
- TOP Valid Dumps Desktop-Specialist Sheet 100% Pass | The Best Tableau Desktop Specialist Exam Latest Practice Questions Pass for sure ☀ Copy URL [ [www.pdfvce.com](http://www.pdfvce.com) ] open and search for ✓ Desktop-Specialist ☀ to download for free ☀ Detailed Desktop-Specialist Study Plan
- High Hit Rate Valid Dumps Desktop-Specialist Sheet - 100% Pass Desktop-Specialist Exam ☀ Open website 「 [www.troytecdumps.com](http://www.troytecdumps.com) 」 and search for ► Desktop-Specialist ◀ for free download ☀ Desktop-Specialist Reliable Test Testking
- Desktop-Specialist Valid Test Online ☀ New Desktop-Specialist Exam Guide ☀ Desktop-Specialist Brainsdumps Pdf ☀ Easily obtain free download of ⇒ Desktop-Specialist ⇐ by searching on “ [www.pdfvce.com](http://www.pdfvce.com) ” ☀ Test Desktop-Specialist

## Lab Questions

- [illegible]

P.S. Free & New Desktop-Specialist dumps are available on Google Drive shared by GuideTorrent: <https://drive.google.com/open?id=1vhfP8RoRH0bF5YJnJQuHUuFixve3OVA1>