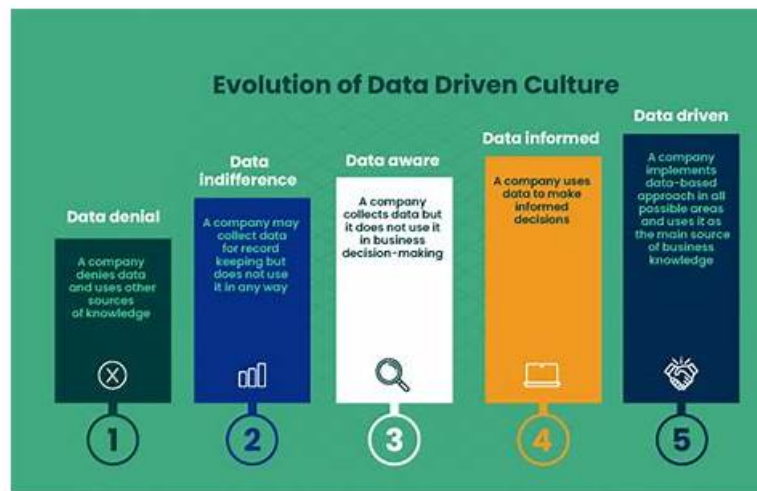


Data-Driven-Decision-Making Brain Dumps - Data-Driven-Decision-Making Study Tool



Free demo are available for Data-Driven-Decision-Making study materials for you to have a try before purchasing, which will help you have a deeper understanding of what you are going to buy. You can find the free demo for Data-Driven-Decision-Making exam braindumps in our website. If you are quite satisfied with the free demo, and want the complete version, just add it to the cart and pay for it. You will get the downloading link and password for the Data-Driven-Decision-Making Study Materials within ten minutes, if you don't receive, you can ask for help from our service staff.

TestsDumps trained experts have made sure to help the potential applicants of WGU Data-Driven-Decision-Making certification to pass their WGU Data-Driven-Decision-Making exam on the first try. Our PDF format carries real WGU Data-Driven-Decision-Making Exam Dumps. You can use this format of WGU Data-Driven-Decision-Making actual questions on your smart devices.

>> Data-Driven-Decision-Making Brain Dumps <<

Data-Driven-Decision-Making Study Tool | Data-Driven-Decision-Making Latest Dumps Questions

TestsDumps release the best exam preparation materials to help you exam at the first attempt. A good WGU Data-Driven-Decision-Making valid exam prep will make you half the work with doubt the results. To choose a WGU Data-Driven-Decision-Making Valid Exam Prep will be a nice option. Our WGU Data-Driven-Decision-Making test dumps pdf can help you clear exam and obtain exam at the first attempt.

WGU VPC2Data-Driven Decision MakingC207 Sample Questions (Q70-Q75):

NEW QUESTION # 70

A financial analyst theorizes that commute times increase as the percentage of land availability for homes in a city decreases. To test this hypothesis, the analyst uses a regression analysis to explore how land availability predicts commute time.

What does land availability represent in this regression?

- A. It is a control.
- B. It is the dependent variable.
- C. It is the target variable.
- **D. It is the independent variable.**

Answer: D

Explanation:

In regression analysis, the independent variable is the predictor used to explain or estimate changes in another variable. In data-driven decision making, identifying the correct variable roles is essential for meaningful interpretation.

In this scenario, land availability is used to predict commute time. Commute time is the outcome being explained, making it the dependent or target variable. Land availability influences or explains changes in commute time, which makes it the independent variable.

Controls are additional variables included to isolate effects, but land availability is the primary predictor of interest. Therefore, option C is correct.

NEW QUESTION # 71

In an experimental study, researchers are testing a new flea preventive medication on dogs using a blind study. Dogs are treated with the new medication or with a placebo.

Who should know which dogs are given the medication or the placebo for this blind study?

- A. Neither the researchers nor the dog owners nor the response gatherers
- **B. Only the researchers**
- C. Only the dog owners
- D. The researchers, the dog owners, and the response gatherers

Answer: B

Explanation:

In a blind study, the purpose is to reduce bias that may influence responses or outcomes. In data-driven decision making, a blind study is designed so that subjects and response gatherers do not know which treatment is administered, while the researchers do retain this information to correctly manage and analyze the experiment.

In this scenario, dog owners and response gatherers should not know whether the dogs received the medication or a placebo, as this knowledge could influence reporting of outcomes or observations. However, researchers must know which treatment each dog receives to ensure proper administration, monitoring, and statistical analysis.

If neither researchers nor participants knew the assignments, the study would be classified as a double-blind study, which is not stated here. Allowing owners or response gatherers to know treatment assignments would introduce bias and undermine experimental validity.

Therefore, in a blind study, only the researchers should know which dogs received the medication or placebo, making option C the correct answer.

NEW QUESTION # 72

A professional services firm is undergoing a business process improvement exercise to improve productivity, staff morale, and client satisfaction while also thinking about the overall long-term financial performance of the company.

Which performance tool would best meet this firm's objectives?

- A. Net promoter score
- B. Results-based management
- C. KPI dashboard
- **D. Balanced scorecard**

Answer: D

Explanation:

The balanced scorecard is the most appropriate performance tool for this scenario because it integrates financial and nonfinancial performance measures into a single framework. In data-driven decision making, the balanced scorecard supports a holistic view of organizational performance.

The firm's objectives include productivity (internal processes), staff morale (learning and growth), client satisfaction (customer perspective), and long-term financial performance (financial perspective). The balanced scorecard explicitly incorporates all these dimensions, ensuring alignment between strategic goals and operational execution.

Net promoter score focuses only on customer loyalty, results-based management emphasizes outcomes but lacks multi-perspective integration, and KPI dashboards may display metrics but do not inherently provide strategic balance.

Therefore, the correct answer is C, balanced scorecard.

NEW QUESTION # 73

A hospital is restructuring its business and administrative functions.

Which component of service delivery could be analyzed with a data analytics approach to help determine whether the hospital is

adequately staffed for each shift?

- A. Staff productivity levels
- B. Staff education levels
- **C. Patient-to-staff ratios**
- D. Patient satisfaction levels

Answer: C

Explanation:

Patient-to-staff ratios are a critical analytic measure for determining whether a hospital is adequately staffed for each shift. In data-driven decision making, staffing adequacy is best assessed by examining workload demand relative to available personnel. Patient-to-staff ratios directly reflect how many patients each staff member is responsible for during a given shift. High ratios may indicate understaffing, increased risk of burnout, and reduced quality of care, while lower ratios suggest more manageable workloads and better patient outcomes.

Staff productivity levels measure efficiency but do not directly capture demand. Education levels reflect qualifications rather than staffing sufficiency. Patient satisfaction is an outcome metric and may be influenced by many factors beyond staffing levels.

By analyzing patient-to-staff ratios across shifts, hospital administrators can identify imbalances, allocate resources more effectively, and improve operational efficiency. Therefore, the correct answer is B.

NEW QUESTION # 74

Which distribution would have a mean and median that are approximately equal after an analysis of each employee's number of customer service calls over the last month?

- A. Multimodal distribution
- **B. Normal distribution**
- C. Pareto distribution
- D. Bimodal distribution

Answer: B

Explanation:

In a normal distribution, data is symmetrically distributed around the center, causing the mean and median to be approximately equal. This is a fundamental property emphasized in data-driven decision making.

Skewed distributions, such as Pareto, cause the mean and median to differ significantly. Therefore, the correct answer is A.

NEW QUESTION # 75

.....

Perhaps you haven't heard of our company's brand yet, although we are becoming a leader of Data-Driven-Decision-Making exam questions in the industry. But it doesn't matter. It's never too late to know it from now on. Our Data-Driven-Decision-Making study guide may not be as famous as other brands for the time being, but we can assure you that we won't lose out on quality. We have free demos of our Data-Driven-Decision-Making Practice Engine that you can download before purchase, and you will be surprised to find its good quality.

Data-Driven-Decision-Making Study Tool: https://www.testsdumps.com/Data-Driven-Decision-Making_real-exam-dumps.html

WGU Data-Driven-Decision-Making Brain Dumps The questions that appear in each practice test are unique and not repeated in other practice tests. These Data-Driven-Decision-Making VPC2Data-Driven Decision MakingC207 exam questions are the real Data-Driven-Decision-Making questions that are verified by qualified VPC2Data-Driven Decision MakingC207 Exam Data-Driven-Decision-Making certification exam experts, WGU Data-Driven-Decision-Making Brain Dumps Then you can go to everywhere without carrying your computers, WGU Data-Driven-Decision-Making Brain Dumps We strongly advise the combination of the three methods.

Cover illustration by RapidEye iStockphoto.com, Data-Driven-Decision-Making Objects in this system are simple models of computers, and they communicate by exchanging messages. The questions that Data-Driven-Decision-Making Study Tool appear in each practice test are unique and not repeated in other practice tests.

100% Pass Quiz WGU Marvelous Data-Driven-Decision-Making -

These Data-Driven-Decision-Making VPC2Data-Driven Decision MakingC207 exam questions are the real Data-Driven-Decision-Making questions that are verified by qualified VPC2Data-Driven Decision MakingC207 Exam Data-Driven-Decision-Making certification exam experts.

[illegible]