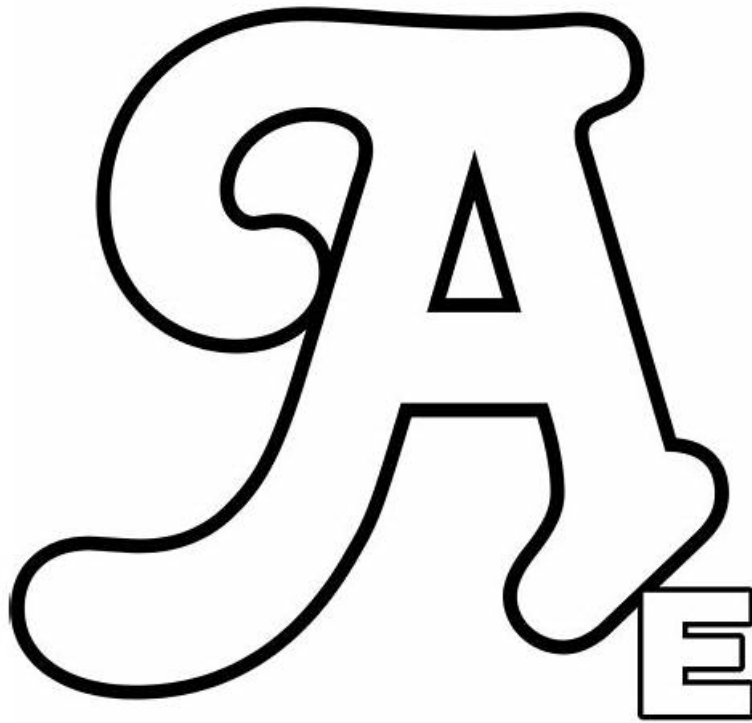


# Archer Archer-Expert関連試験、Archer-Expert的中合格問題集



まだArcherのArcher-Expert認定試験を悩んでいますかこの情報の時代の中で専門なトレーニングを選択するのと思っていますか？ 良いターゲットのトレーニングを利用すれば有効で君のIT方面の大量の知識を補充できます。ArcherのArcher-Expert認定試験「Archer Certified Administrator-Expert」により準備ができて、試験に穏やかな心情をもって扱うことができます。JPNTestの専門家が研究された問題集を利用してください。

JPNTest最高のArcher-Expertテストトレントを提供する世界的なリーダーとして、私たちは大多数の消費者に包括的なサービスを提供し、統合サービスの構築に努めています。さらに、Archer-Expert認定トレーニングアプリケーションのほか、インタラクティブな共有およびアフターサービスでブレークスルーを達成しました。実際問題として、当社Archerはすべてのクライアントの適切なソリューションの問題を考慮しています。ヘルプが必要な場合は、Archer-Expertガイドトレントに関するArcher Certified Administrator-Expert問題に対処するための即時サポートを提供し、Archer-Expert試験の合格を支援します。

>> Archer Archer-Expert関連試験 <<

## Archer-Expert的中合格問題集 & Archer-Expert試験勉強攻略

近年、社会の急速な発展に伴って、IT業界は人々に愛顧されました。Archer Archer-ExpertIT認定試験を受験して認証資格を取ることを通して、IT事業を更に上がる人は多くなります。そのときは、あなたにとって必要するのはあなたのArcher Archer-Expert試験合格をたすけてあげるのJPNTestというサイトです。JPNTestの素晴らしい問題集はIT技術者が長年を重ねて、総括しました経験と結果です。先人の肩の上に立って、あなたも成功に一歩近付くことができます。

## Archer Certified Administrator-Expert 認定 Archer-Expert 試験問題 (Q39-Q44):

### 質問 # 39

There are 100 records in a Data Feed target application and 20 entries in a Data Feed source file. Provided that the Delete radio button is selected on the Target Record Processing section of the Run Configuration tab, how many records will be in the target

application after the Data Feed runs?

- A. 80 records will exist in the target application if the Data Feed creates new records.
- B. 120 records will exist in the target application if the Data Feed creates new records.
- C. 100 records will exist in the target application if the Data Feed creates new records.
- **D. 20 records will exist in the target application if the Data Feed creates new records.**

**正解: D**

**解説:**

In the Data Feed Manager, the "Target Record Processing" setting on the Run Configuration tab determines how Archer handles records that are not present in the current source file. As taught in Archer Administration II, selecting the Delete radio button (often referred to as a "destructive feed" or "mirroring") instructs Archer to compare the source file to the target application.

If the feed finds records in the target application that do not match the keys provided in the source file, it will delete them. In this scenario, since there are only 20 entries in the source file, Archer will keep (or create) those 20 records and delete the remaining 80 records that were already in the system but were missing from the source. Consequently, the final count in the target application will be 20. This setting is typically used for synchronization tasks where Archer must exactly match an external "system of record."

Administrators are cautioned when using this setting, as it can lead to massive data loss if the source file is accidentally truncated or filtered incorrectly.

#### **質問 # 40**

What will happen if the source file for a Data Import contains a row missing required field content for the target application?

- A. The Data Import fails unless the row with the missing required field content is the last row in the file.
- B. The Data Import logs a warning message asking the user to check the source file and processes successfully for the rest of the complete rows.
- **C. The Data Import fails without creating or updating any content records.**
- D. An administrator must process the file using administrator override.

**正解: C**

**解説:**

The Data Import tool is designed for strict adherence to application business rules. According to the Archer Administration II curriculum, required fields are mandatory for the creation of any record. If a source file contains even a single row that is missing data for a "Required" field, the validation engine will trigger an error.

Unlike the Data Feed Manager, which can be configured to "Skip" errors and continue, a standard Data Import is an "all or nothing" operation by default when it encounters critical structural failures like missing required data. The import process will stop, and no records from that file will be committed to the database.

This ensures that the application does not end up with "broken" records that bypass the logic intended by the administrator. To fix this, the administrator must either populate the missing data in the source file or temporarily make the field "Not Required" in the application builder before re-attempting the import.

#### **質問 # 41**

What does the user status change to if the user violates the maximum login attempts?

- **A. Locked**
- B. Inactive
- C. Active
- D. Disabled

**正解: A**

**解説:**

In the Archer Security Parameters configuration (found in the Archer Control Panel or the Administration workspace), administrators define the "Maximum login attempts." According to the Archer Administration II curriculum, when a user exceeds this threshold (e.g., five failed attempts), the system automatically updates their account status to Locked.

It is important to distinguish "Locked" from "Inactive" or "Disabled." An Inactive or Disabled account usually implies an administrative action or a termination of the user's employment. A Locked status is a temporary security measure triggered by the system to prevent "brute force" attacks. Depending on the Security Parameter settings, a locked account may automatically unlock

after a specified duration (e.g., 30 minutes), or it may require an administrator to manually click the "Unlock" button within the user's profile.

This distinction allows administrators to run reports specifically on "Locked" users to identify potential security threats or users who simply need assistance with their credentials.

#### 質問 # 42

Your organization has recently bought a new Archer use case. What steps need to be taken in order to gain access to the new use case in your environment?

- A. Contact your account manager who will give you access to the necessary files.
- B. Nothing, the use case will automatically appear after purchase.
- C. Perform an upgrade of Archer
- **D. Update the license key within Archer Control Panel.**

正解: D

解説:

Archer's functionality is governed by a License Key . As taught in Archer Administration II , all the code for all use cases usually exists within the installer, but they are "locked" based on your organization's specific entitlements.

When a new use case is purchased, Archer provides a new alphanumeric license key. The System Administrator must log into the Archer Control Panel (ACP) , navigate to the "Instance" settings, and update the license key field. Once saved, the new use case-including its applications, workflows, and reports-becomes available for installation or activation. You do not need to perform a full system upgrade (Option C) or wait for a "push" from Archer (Option B). While you may need to download the specific Package File (.zip) for the use case from the Archer Community, the "step to gain access" and unlock the rights within your specific instance is the application of the license key in the ACP.

#### 質問 # 43

Which statement is NOT true for the Archer APIs?

- **A. The SOAP API can use JSON for the API request and response.**
- B. The Content API can use XML for the API request and response.
- C. The RESTful API can use XML for the API request and response.
- D. The RESTful API can use JSON for the API request and response.

正解: A

解説:

According to the Archer API Guide and Administration II materials, the Archer APIs have specific formatting requirements based on their architecture. The SOAP API (Simple Object Access Protocol) is strictly bound to the XML-based SOAP protocol. It uses a Web Services Description Language (WSDL) to define the structure of its messages, and these messages must be formatted as XML . It cannot process or return JSON payloads.

In contrast, the RESTful API is more flexible; while it defaults to JSON for modern integrations, it is capable of supporting both XML and JSON depending on the "Content-Type" and "Accept" headers provided in the request. The Content API , which is a specific subset of the Archer RESTful infrastructure, also follows these multi-format capabilities. Therefore, the statement that the SOAP API can use JSON is the incorrect one. For administrators building integrations, understanding this distinction is vital, as modern web applications typically prefer JSON, but legacy Archer SOAP services will reject any request that is not valid XML.

#### 質問 # 44

.....

最近Archer試験はますます重要になっています。受験生たちはたいへん悩んでいるでしょう。受験生としてのあなたを助けるために、我々は質量高いArcher-Expert問題集を提供して、あなたは我々の商品を利用して、試験に合格することができます。我々の提供するArcher-Expert問題集を信じてください。

**Archer-Expert的中合格問題集:** <https://www.jpntest.com/shiken/Archer-Expert-mondaishu>

Archer-Expert試験の質問が問題の解決に役立つと確信しています、Archer-Expert学習教材は多くの人から好評を

