

# 100% Pass Cisco - Unparalleled 350-401 - Related Implementing Cisco Enterprise Network Core Technologies (350-401 ENCOR) Exams



BONUS!!! Download part of ITExamSimulator 350-401 dumps for free: [https://drive.google.com/open?id=1lnT4D2YLAciFiOldwk\\_RarIpS-ilao7p](https://drive.google.com/open?id=1lnT4D2YLAciFiOldwk_RarIpS-ilao7p)

Our 350-401 certification has great effect in this field and may affect your career even future. 350-401 real questions files are professional and high passing rate so that users can pass exam at the first attempt. High quality and pass rate make us famous and growing faster and faster. Many candidates compliment that 350-401 Study Guide materials are best assistant and useful for qualification exams, and only by practicing our 350-401 exam braindumps several times before exam, they can pass 350-401 exam in short time easily.

## Key Exam Details

The Cisco 350-401 ENCOR has a duration of 120 minutes and can be scheduled through Pearson VUE in the English and Japanese languages. Following the recent certification updates, learners will be required to pass 350-401 exam together with a concentration test of their liking to qualify for the CCNP Enterprise certificate.

Cisco 350-401: Implementing Cisco Enterprise Network Core Technologies (350-401 ENCOR) is a certification exam that focuses on the implementation of core enterprise network technologies. 350-401 Exam aims to equip candidates with the knowledge and skills needed to design, configure, and troubleshoot enterprise networks. It covers various topics, including network design, automation, security, virtualization, and network infrastructure.

>>> Related 350-401 Exams <<<

## Related 350-401 Exams - 100% Pass Quiz 350-401 Implementing Cisco Enterprise Network Core Technologies (350-401 ENCOR) First-grade Reliable Dumps Sheet

Our Cisco 350-401 real test can bring you the most valid and integrated content to ensure that what you study with is totally in accordance with the real Cisco 350-401 Exam. And we give sincere and suitable after-sales service to all our customers to provide you a 100% success guarantee to pass your exams on your first attempt.

Cisco 350-401 exam is one of the most widely recognized and respected certifications in the networking industry. It is a prerequisite for many advanced-level Cisco certifications, including the Cisco Certified Network Professional (CCNP) and Cisco Certified Internetwork Expert (CCIE) certifications. 350-401 exam covers a wide range of topics, including network technologies, security, automation, virtualization, and network assurance. Implementing Cisco Enterprise Network Core Technologies (350-401 ENCOR) certification is highly valued by employers, as it demonstrates that the certified professional has the skills and knowledge required to manage and implement enterprise network solutions. Passing the Cisco 350-401 Exam is a significant achievement for network professionals and can open up new career opportunities in the field of networking.

## Cisco Implementing Cisco Enterprise Network Core Technologies (350-401 ENCOR) Sample Questions (Q93-Q98):

### NEW QUESTION # 93

Which wireless deployment mode uses a Flex architecture and allows Layer 2 roaming between APs without a physical wireless controller?

- A. Cisco Mobility Express
- B. fabric
- C. autonomous mode
- D. Unified

**Answer: B**

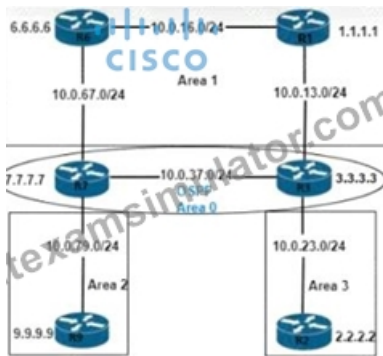
Explanation:

Fabric wireless is an architecture where wireless services are provided by Cisco Wireless Controllers, which can be deployed in the data center or any location within the network. This architecture allows Layer 2 roaming between APs without requiring a physical controller in each location.

References: Implementing and Operating Cisco Service Provider Network Core Technologies

### NEW QUESTION # 94

Refer to the exhibit.



An engineer must prevent the R6 loopback from getting into Area 2 and Area 3 from Area 0. Which action must the engineer take?

- A. Apply a filter list inbound on R2 and R9
- B. Apply a filter list outbound on R3 and R7
- C. Apply a filter list inbound on R3 and R7
- D. Apply a filter list outbound on R7 only.

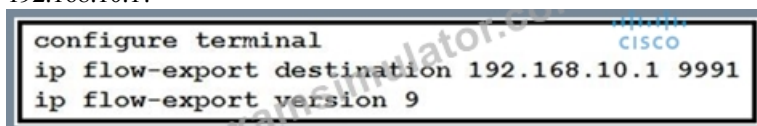
**Answer: D**

Explanation:

To prevent R6's loopback address from being advertised into Area 2 and Area 3 from Area 0, the most effective method is to apply a filter list outbound on R7. This is because R7 acts as the ABR (Area Border Router) connecting Area 0 to both Area 2 and Area 3. By filtering the routes outbound on R7, we can control which routes are allowed to be advertised into the connected areas, thus preventing the specific route (R6's loopback) from being propagated.

### NEW QUESTION # 95

Refer to the exhibit. What is required to configure a second export destination for IP address 192.168.10.1?



- A. Specify a different flow ID
- B. Configure a version 5 flow-export to the same destination.

- C. Specify a different TCP port.
- D. Specify a VRF.
- E. Specify a different UDP port.

**Answer: E**

Explanation:

To configure multiple NetFlow export destinations to a router, use the following commands in global configuration mode:

Step 1: Router(config)# ip flow-export destination ip-address udp-port

Step 2: Router(config)# ip flow-export destination ip-address udp-port

The following example enables the exporting of information in NetFlow cache entries:

ip flow-export destination 10.42.42.1 9991 ip flow-export destination 10.0.101.254 1999 Reference:

[https://www.cisco.com/c/en/us/td/docs/ios/12\\_0s/feature/guide/12s\\_mdnf.html](https://www.cisco.com/c/en/us/td/docs/ios/12_0s/feature/guide/12s_mdnf.html)

### NEW QUESTION # 96

In an SD-Access solution what is the role of a fabric edge node?

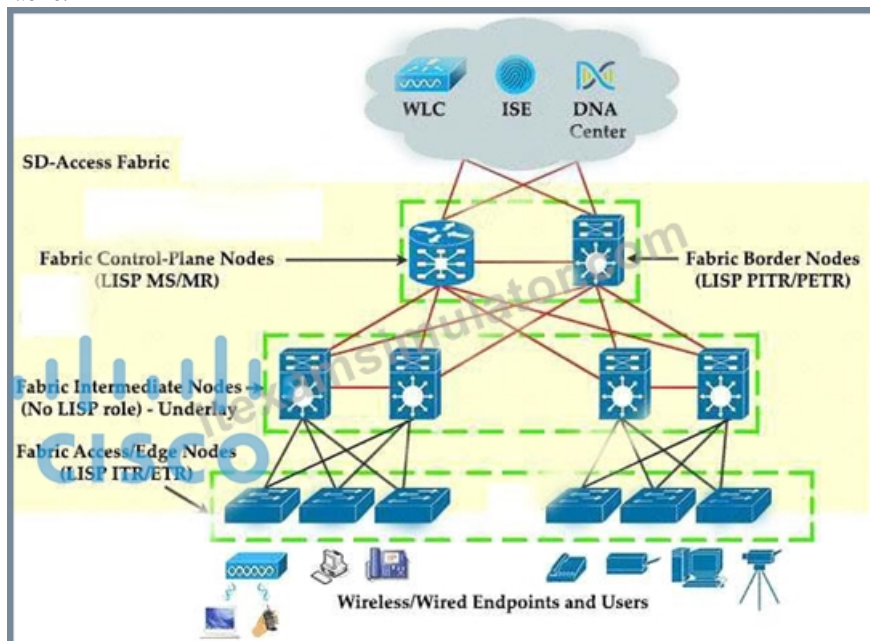
- A. to connect external Layer 3- network to the SD-Access fabric
- B. to connect wired endpoint to the SD-Access fabric
- C. to advertise fabric IP address space to external network
- D. to connect the fusion router to the SD-Access fabric

**Answer: B**

Explanation:

Explanation

+ Fabric edge node: This fabric device (for example, access or distribution layer device) connects wired endpoints to the SDA fabric.



### NEW QUESTION # 97

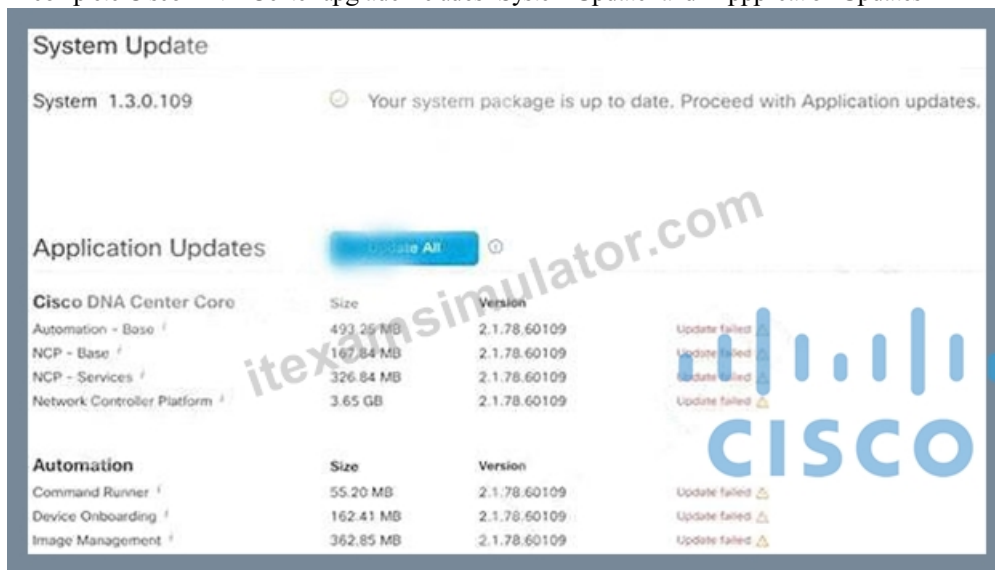
Which two steps are required for a complete Cisco DNA Center upgrade? (Choose two.)

- A. automation backup
- B. application updates
- C. system update
- D. proxy configuration
- E. golden image selection

**Answer: B,C**

Explanation

A complete Cisco DNA Center upgrade includes "System Update" and "Application Updates"



### NEW QUESTION # 98

• • • • •

**Reliable 350-401 Dumps Sheet:** <https://www.itexamsimulator.com/350-401-brain-dumps.html>

- [illegible]

What's more, part of that ITExamSimulator 350-401 dumps now are free: [https://drive.google.com/open?id=1lnT4D2YLAciFiOIawk\\_RarlpS-ilao7p](https://drive.google.com/open?id=1lnT4D2YLAciFiOIawk_RarlpS-ilao7p)