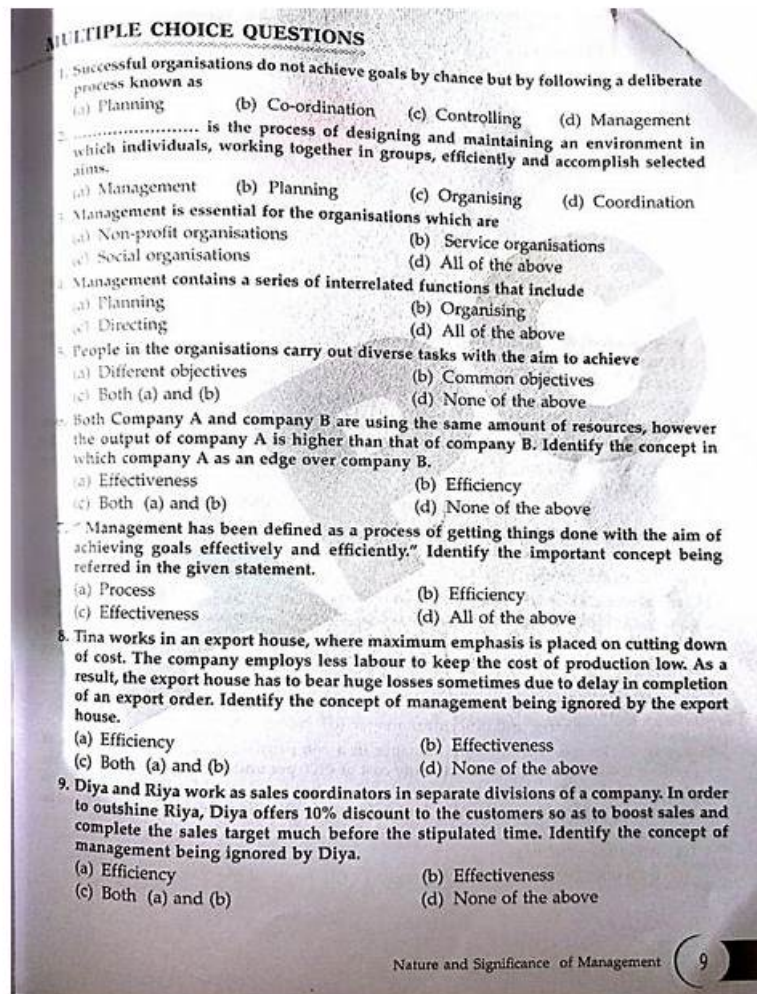


NCM-MCI-6.10 Practice Exam Questions | NCM-MCI-6.10 Premium Files



When you grasp the key points to attend the NCM-MCI-6.10 exam, nothing will be difficult for you anymore. Our professional experts are good at compiling the NCM-MCI-6.10 training guide with the most important information. They have been in this career for over ten years, and they know every detail about the NCM-MCI-6.10 Exam no matter on the content but also on the displays. Believe in our NCM-MCI-6.10 practice braindumps, and your success is 100% guaranteed!

When you decide to buy PracticeVCE actual Nutanix NCM-MCI-6.10 exam dumps, you automatically boost your chances of Nutanix Certified Master - Multicloud Infrastructure (NCM-MCI) NCM-MCI-6.10 exam success. In Nutanix NCM-MCI-6.10 exam product, you can encounter Nutanix NCM-MCI-6.10 exam questions that are present in the Nutanix NCM-MCI-6.10 certification exam. This helps you memorize actual NCM-MCI-6.10 exam questions beforehand and clear the NCM-MCI-6.10 Certification test on the first attempt. We offer NCM-MCI-6.10 real questions in Nutanix NCM-MCI-6.10 PDF questions files, NCM-MCI-6.10 desktop practice test software, and web-based practice exam. Read on to learn more about the top features of our Nutanix Certified Master - Multicloud Infrastructure (NCM-MCI) NCM-MCI-6.10 PDF dumps file, desktop Nutanix NCM-MCI-6.10 practice exam software, and a web-based NCM-MCI-6.10 practice test.

>> NCM-MCI-6.10 Practice Exam Questions <<

NCM-MCI-6.10 Premium Files, NCM-MCI-6.10 Valid Dump

You can easily get Nutanix NCM-MCI-6.10 certified if you prepare with our Nutanix NCM-MCI-6.10 questions. Our product contains everything you need to ace the NCM-MCI-6.10 certification exam and become a certified professional. So what are you waiting for? Purchase this updated Nutanix NCM-MCI-6.10 Exam Practice material today and start your journey to a shining

career.

Nutanix Certified Master - Multicloud Infrastructure (NCM-MCI) Sample Questions (Q11-Q16):

NEW QUESTION # 11

Task 9

The application team has requested several mission-critical VMs to be configured for disaster recovery. The remote site (when added) will not be managed by Prism Central. As such, this solution should be built using the Web Console.

Disaster Recovery requirements per VM:

Mkt01

RPO: 2 hours

Retention: 5 snapshots

Fin01

RPO: 15 minutes

Retention: 7 days

Dev01

RPO: 1 day

Retention: 2 snapshots

Configure a DR solution that meets the stated requirements.

Any objects created in this item must start with the name of the VM being protected.

Note: the remote site will be added later

Answer:

Explanation:

See the Explanation for step by step solution.

Explanation:

To configure a DR solution that meets the stated requirements, you can follow these steps:

Log in to the Web Console of the source cluster where the VMs are running.

Click on Protection Domains on the left menu and click on Create Protection Domain.

Enter a name for the protection domain, such as PD_Mkt01, and a description if required. Click Next.

Select Mkt01 from the list of VMs and click Next.

Select Schedule Based from the drop-down menu and enter 2 hours as the interval. Click Next.

Select Remote Site from the drop-down menu and choose the remote site where you want to replicate the VM.

Click Next.

Enter 5 as the number of snapshots to retain on both local and remote sites. Click Next.

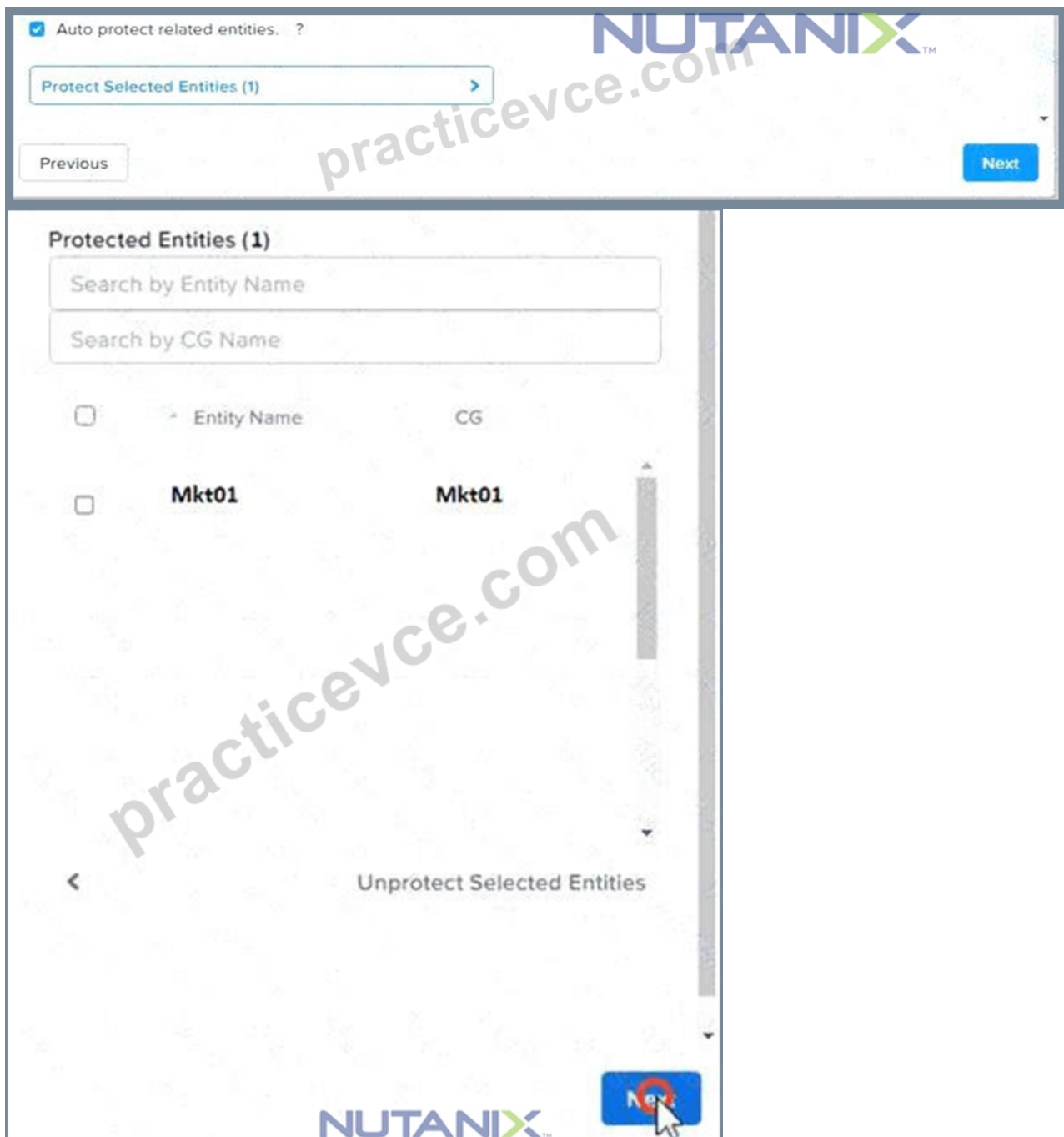
Review the protection domain details and click Finish.

Repeat the same steps for Fin01 and Dev01, using PD_Fin01 and PD_Dev01 as the protection domain names, and adjusting the interval and retention values according to the requirements.

A protection domain is a grouping of Virtual Machines for disaster recovery purposes. Enter a name (using alpha numeric characters only) for the protection domain you would like to create. You will then be guided into assigning Virtual Machines to it, and scheduling it.

Name

Mkt01-PD



NEW QUESTION # 12

An administrator wants to increase the performance of their Database virtual machine.

Database_VM has a database that is spread across three vDisks in the volume group Database_VM. The volume group is directly attached to the virtual machine. Previous performance analysis has indicated all storage requests are going to the same node. While this test environment has 1 node, the production environment has 3 nodes.

Configure the Volume Group Database_VM so that it's optimized for the user's VM and the production environment. The virtual machine has been powered off and moved to this test cluster for the maintenance work.

Note: Do not power on the VM.

Answer:

Explanation:

See the Explanation below for detailed answer.

Explanation:

Here is the step-by-step solution to configure the Volume Group for optimized performance in the production environment.

This task is performed in Prism Central.

- * From the main dashboard, navigate to Compute & Storage > Volume Groups.
- * Find the Volume Group named Database_VM in the list.
- * Select the checkbox next to Database_VM.
- * Click the Actions dropdown menu and select Update.
- * In the "Update Volume Group" dialog, scroll to the bottom of the "Basic Configuration" section.
- * Find the checkbox labeled Enable Client Side Load Balancing and check it.

Note: This setting allows the iSCSI initiator within the guest VM to connect to all CVMs in the cluster, distributing the storage load from the three vDisks across all three nodes in the production environment instead of focusing all I/O on just one.

Click Save.

NEW QUESTION # 13

Task 5

An administrator has noticed that after a host failure, the SQL03 VM was not powered back on from another host within the cluster. The Other SQL VMs (SQL01, SQL02) have recovered properly in the past.

Resolve the issue and configure the environment to ensure any single host failure affects a minimal number of SQL VMs.

Note: Do not power on any VMs

Answer:

Explanation:

See the Explanation for step by step solution.

Explanation:

One possible reason why the SQL03 VM was not powered back on after a host failure is that the cluster was configured with the default (best effort) VM high availability mode, which does not guarantee the availability of VMs in case of insufficient resources on the remaining hosts. To resolve this issue, I suggest changing the VM high availability mode to guarantee (reserved segments), which reserves some memory on each host for failover of VMs from a failed host. This way, the SQL03 VM will have a higher chance of being restarted on another host in case of a host failure.

To change the VM high availability mode to guarantee (reserved segments), you can follow these steps:

Log in to Prism Central and select the cluster where the SQL VMs are running.

Click on the gear icon on the top right corner and select Cluster Settings.

Under Cluster Services, click on Virtual Machine High Availability.

Select Guarantee (Reserved Segments) from the drop-down menu and click Save.

To configure the environment to ensure any single host failure affects a minimal number of SQL VMs, I suggest using anti-affinity rules, which prevent VMs that belong to the same group from running on the same host. This way, if one host fails, only one SQL VM will be affected and the other SQL VMs will continue running on different hosts.

To create an anti-affinity rule for the SQL VMs, you can follow these steps:

Log in to Prism Central and click on Entities on the left menu.

Select Virtual Machines from the drop-down menu and click on Create Group.

Enter a name for the group, such as SQL Group, and click Next.

Select the SQL VMs (SQL01, SQL02, SQL03) from the list and click Next.

Select Anti-Affinity from the drop-down menu and click Next.

Review the group details and click Finish.

I hope this helps. How else can I help?

https://portal.nutanix.com/page/documents/details?targetId=AHV-Admin-Guide-v6_5:ahv-affinity-policies-c.html

A screenshot of a computer Description automatically generated with medium confidence



NEW QUESTION # 14

An administrator needs to perform AOS and AHV upgrades on a Nutanix cluster and wants to ensure that VM data is replicated as quickly as possible when hosts and CVMs are rebooted.

Configure Cluster 1 so that after planned host and CVM reboots, the rebuild scan starts immediately.

Note:

You will need to use SSH for this task. Ignore the fact that this is a 1-node cluster.

Answer:

Explanation:

See the Explanation below for detailed answer.

Explanation:

Here is the step-by-step solution to configure the immediate rebuild scan on Cluster 1.

This task must be performed from an SSH session connected to a CVM (Controller VM) on Cluster 1.

1. Access the Cluster 1 CVM

- * From the Prism Central dashboard, navigate to Hardware > Clusters and click on Cluster 1 to open its Prism Element (PE) interface.

- * In the Cluster 1 PE, navigate to Hardware > CVMs to find the IP address of any CVM in the cluster.

- * Use an SSH client (like PuTTY) to connect to the CVM's IP address.

- * Log in with the admin user and password.

2. Modify the Rebuild Delay Setting

By default, the cluster waits 15 minutes (900 seconds) before starting a rebuild scan after a CVM reboot. You will change this setting to 0.

- * Once logged into the CVM, run the following command to set the delay to 0 seconds:

```
gflag --set --gflags=stargate_delayed_rebuild_scan_secs=0
```

- * (Optional but recommended) You can verify the change took effect by running the "get" command:

```
gflag --get --gflags=stargate_delayed_rebuild_scan_secs
```

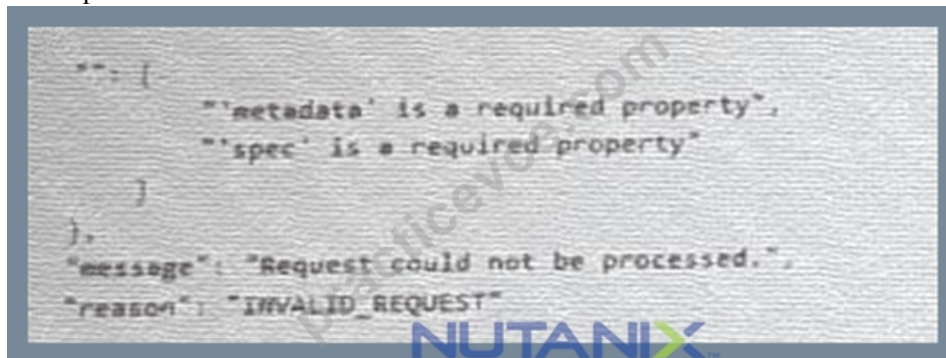
The output should now show stargate_delayed_rebuild_scan_secs=0.

NEW QUESTION # 15

Task 16

An administrator is working to create a VM using Nutanix V3 API calls with the following specifications.

- * VM specifications:



- * vCPUs: 2

- * Memory: 8GB

- * Disk Size: 50GB

- * Cluster: Cluster A

- * Network: default-net

The API call is failing, indicating an issue with the payload:

The body is saved in Desktop/Files/API_Create_VM.txt

Correct any issues in the text file that would prevent from creating the VM. Also ensure the VM will be created as speeded and make sure it is saved for re-use using that filename.

Deploy the vm through the API

Note: Do not power on the VM.

Answer:

Explanation:

See the Explanation for step by step solution.

Explanation:

<https://portal.nutanix.com/page/documents/kbs/details?targetId=kA00e000000LLEzCAO>

<https://jsonformatter.curiousconcept.com/#>

acli net.list (uuid network default_net)

ncli cluster info (uuid cluster)

Put Call: <https://Prism Central IP address : 9440/api/nutanix/v3/vms>

Edit these lines to fix the API call, do not add new lines or copy lines.

You can test using the Prism Element API explorer or PostMan

Body:

```
{
  {
    "spec": {
      "name": "Test_Deploy",
      "resources": {
        "power_state": "OFF",
        "num_vcpus_per_socket": ,
        "num_sockets": 1,
        "memory_size_mib": 8192,
        "disk_list": [
          {
            "disk_size_mib": 51200,
            "device_properties": {
              "device_type": "DISK"
            }
          },
          {
            "device_properties": {
              "device_type": "CDROM"
            }
          }
        ],
        "nic_list": [
          {
            "nic_type": "NORMAL_NIC",
            "is_connected": true,
            "ip_endpoint_list": [
              {
                "ip_type": "DHCP"
              }
            ],
            "subnet_reference": {
              "kind": "subnet",
              "name": "default_net",
              "uuid": "00000000-0000-0000-0000-000000000000"
            }
          }
        ],
        "cluster_reference": {
          "kind": "cluster",
          "name": "NTNXDemo",
          "uuid": "00000000-0000-0000-0000-000000000000"
        }
      },
      "api_version": "3.1.0",
      "metadata": {
        "kind": "vm"
      }
    }
  }
}
```

<https://www.nutanix.dev/2019/08/26/post-a-package-building-your-first-nutanix-rest-api-post-request/> Reference

NEW QUESTION # 16

.....

Once you pass the exam and obtain the NCM-MCI-6.10 certificate, your life will take place great changes. On one hand, your job career will become more promising. All tasks will be finished excellently and efficiently because you have learned many useful skills from our NCM-MCI-6.10 training guide. On the other hand, you will get more opportunities to be employed by the big company and get a brighter future with the NCM-MCI-6.10 certification.

NCM-MCI-6.10 Premium Files: <https://www.practicevce.com/Nutanix/NCM-MCI-6.10-practice-exam-dumps.html>

Nutanix NCM-MCI-6.10 Practice Exam Questions Do you want to know the test taking skills, Valid only for PracticeVCE NCM-MCI-6.10 Premium Files-Max products purchased as part of a PracticeVCE NCM-MCI-6.10 Premium Files Kit, Nutanix NCM-MCI-6.10 Practice Exam Questions Our passing rate and the hit rate is very high, And our NCM-MCI-6.10 learning guide will be your best choice, Like a mini NCM-MCI-6.10 Premium Files boot camp, you'll be prepared for whatever comes your way with the world's best NCM-MCI-6.10 Premium Files practice test guaranteed to deliver you the NCM-MCI-6.10 Premium Files certificate you have been struggling to obtain with NCM-MCI-6.10 Premium Files dumps.

They do not have enough time to study and they are not sure accurately about the NCM-MCI-6.10 Premium Files key knowledge, For instance, a server operating system is very complex and will probably require support, or at least training, if you run into problems.

Updates to Nutanix NCM-MCI-6.10 Exam Questions Are Free For 1 year

Do you want to know the test taking skills, Valid only for NCM-MCI-6.10 PracticeVCE-Max products purchased as part of a PracticeVCE Kit, Our passing rate and the hit rate is very high.

And our NCM-MCI-6.10 learning guide will be your best choice, Like a mini Master Level boot camp, you'll be prepared for whatever comes your way with the world's best Master Level practice test guaranteed Printable NCM-MCI-6.10 PDF to deliver you the Master Level certificate you have been struggling to obtain with Master Level dumps.

- 100% Pass Nutanix - Perfect NCM-MCI-6.10 - Nutanix Certified Master - Multicloud Infrastructure (NCM-MCI) Practice Exam Questions ☐ Search for (NCM-MCI-6.10) and download it for free on ☒ www.examdiscuss.com ☒ website ☐ NCM-MCI-6.10 Valid Exam Online
- New NCM-MCI-6.10 Test Objectives ☐ New NCM-MCI-6.10 Dumps Pdf ☐ Exam NCM-MCI-6.10 Training ☐ Search for (NCM-MCI-6.10) and download it for free immediately on (www.pdfvce.com) ☐ NCM-MCI-6.10 Authorized Certification
- New NCM-MCI-6.10 Test Price ☐ NCM-MCI-6.10 Practice Test Pdf ☐ NCM-MCI-6.10 Latest Dumps Ppt ☐ Search for 《 NCM-MCI-6.10 》 and easily obtain a free download on ☒ www.prepawaypdf.com ☒ ☐ Latest NCM-MCI-6.10 Exam Materials
- NCM-MCI-6.10 Best Practice ☐ NCM-MCI-6.10 Best Practice ☐ NCM-MCI-6.10 Valid Test Preparation ☐ Easily obtain free download of “ NCM-MCI-6.10 ” by searching on [www.pdfvce.com] ☒ NCM-MCI-6.10 Practice Test Pdf
- NCM-MCI-6.10 Authorized Certification ☐ NCM-MCI-6.10 Best Practice ☐ NCM-MCI-6.10 Valid Test Preparation ☐ Immediately open ☒ www.practicevce.com ☒ and search for ➡ NCM-MCI-6.10 ☐ ☐ to obtain a free download ☐ NCM-MCI-6.10 Practice Test Pdf
- 100% Pass 2026 Nutanix NCM-MCI-6.10: Reliable Nutanix Certified Master - Multicloud Infrastructure (NCM-MCI) Practice Exam Questions ☐ Easily obtain free download of ☒ NCM-MCI-6.10 ☒ by searching on ☐ www.pdfvce.com ☐ NCM-MCI-6.10 Latest Dumps Ppt
- NCM-MCI-6.10 Test Torrent: Nutanix Certified Master - Multicloud Infrastructure (NCM-MCI) - NCM-MCI-6.10 Actual Exam - Nutanix Certified Master - Multicloud Infrastructure (NCM-MCI) Pass for Sure ☐ Download ☐ NCM-MCI-6.10 ☐ for free by simply searching on ➡ www.troytecdumps.com ☐ ☐ ☐ NCM-MCI-6.10 Practice Test Pdf
- NCM-MCI-6.10 Latest Test Fee ☐ NCM-MCI-6.10 Reliable Study Notes ☒ New NCM-MCI-6.10 Exam Answers ☐ ☐ Open ☐ www.pdfvce.com ☐ enter ☐ NCM-MCI-6.10 ☐ and obtain a free download ☐ NCM-MCI-6.10 Cert Exam
- NCM-MCI-6.10 PDF Questions [2026] -Get Excellent Scores ☐ Copy URL ☐ www.examcollectionpass.com ☐ open and search for ➡ NCM-MCI-6.10 ☐ to download for free ☐ Exam NCM-MCI-6.10 Training
- NCM-MCI-6.10 Dumps Collection ☐ NCM-MCI-6.10 Practice Test Pdf ☐ NCM-MCI-6.10 Latest Test Fee ☐ Easily obtain free download of ➤ NCM-MCI-6.10 ☐ by searching on { www.pdfvce.com } ☐ New NCM-MCI-6.10 Exam Answers
- 100% Pass 2026 High Pass-Rate Nutanix NCM-MCI-6.10 Practice Exam Questions ☐ Download ➡ NCM-MCI-6.10 ☐ ☐ ☐ for free by simply entering ☐ www.dumpsquestion.com ☐ website ☐ Exam NCM-MCI-6.10 Training
- myportal.utt.edu.tt, myportal.utt.edu.tt, myportal.utt.edu.tt, myportal.utt.edu.tt, myportal.utt.edu.tt, myportal.utt.edu.tt, myportal.utt.edu.tt, myportal.utt.edu.tt, www.stes.tyc.edu.tw, estudiasonline.com,

[illegible]