

# Pass Guaranteed Quiz 2026 The Best NCARB PDD Relevant Answers

---

## NCARB PDD – Questions With Complete Solutions

The role of a specifier?    Right Ans - 1. determine the responsibility for structural specs with structure engineer;  
2. coordinating standardized keynotes lists to be used on all drawings with the architect;  
3. obtain a preferred general condition document from the client through the architect;  
4. recommending everyone to use BIM;

What are included in the preliminary studies?    Right Ans - 1. allowable height;  
2. allowable area and occupant allowance;  
3. fire rating requirements;

Percolation rate is used to determine what?    Right Ans - To determine whether porous pavement should be used.

Forest Steward Council (FSC)    Right Ans - Harvesting tree without violating people's right.

Under what condition can you put storage under stair?    Right Ans - If it's protected with a minimum of 1-hour rated construction.

Where should the fire extinguisher cabinet (FEC) located?    Right Ans - 48" - 60" AFF, no more than 4" extrusion.

Tear-out, Pull-through    Right Ans - Tear-out: shear failure in a bolted connection due to tension at hole;  
Pull-through: a compression failure where bolts pull through the holes.

ANSI, ASTM    Right Ans - ANSI: American National Standard Institute;  
ASTM: American Society for Testing Material, it's used for testing materials.

Composition of cement    Right Ans - Limestone, clay, iron ore, gypsum

Subsystem estimate is used in which phases of design?    Right Ans - SD and DD. Subsystem estimates deal with a project's functional units and it enables

P.S. Free & New PDD dumps are available on Google Drive shared by Itexamguide: <https://drive.google.com/open?id=1iuRCejHXclaB70VnXwa0Bx1qRB2TXLj1>

We provide our candidates with valid PDD vce dumps and the most reliable pass guide for the certification exam. Our IT professionals written the latest PDD test questions based on the requirement of the certification center, as well as the study materials and test content. By using our online training, you may rest assured that you grasp the key points of PDD Dumps Torrent for the practice test.

At present, many office workers are dedicated to improving themselves. Most of them make use of their spare time to study our PDD learning prep. As you can see, it is important to update your skills in company. After all, the most outstanding worker can get promotion. And if you want to be one of them, you had to learn more. And our PDD Exam Materials are right to help you not only on the latest information but also can help you achieve the authentic PDD certification.

>> PDD Relevant Answers <<

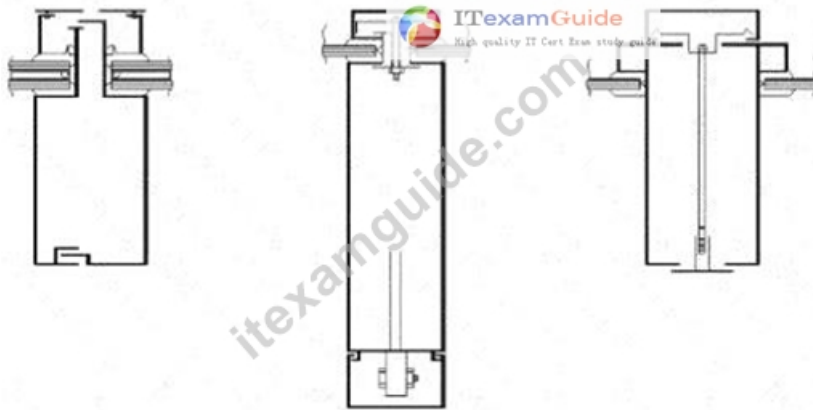
## Free PDF Quiz High-quality NCARB - PDD - ARE 5.0 Project Development and Documentation Exam Relevant Answers

You can contact our service any time as long as you have questions on our PDD practice engine. They are available 24-hours for

guidance and information to help you solve your problem or confusion on the PDD exam braindumps. And they can also give you the fast and professional help as they are trained to deal with matters with high-efficiency on our PDD learning guide. And if you buy our PDD training materials, you will find you can have it in 5 to 10 minutes.

## NCARB ARE 5.0 Project Development and Documentation Exam Sample Questions (Q14-Q19):

### NEW QUESTION # 14



Refer to the exhibit.

In the curtain wall systems shown, each of the aluminum mullions is designed to allow for which of the following?

- A. Capillary action
- **B. Vertical expansion**
- C. Horizontal expansion
- D. Surface tension

**Answer: B**

Explanation:

#### 1. Understanding the Diagram

The three sections in the exhibit show different curtain wall mullion profiles (vertical and horizontal sections) designed for glazing systems.

In curtain wall design, aluminum mullions must accommodate:

- \* Structural loads (wind, dead load of glass, seismic)
- \* Thermal expansion and contraction of metal members
- \* Building movement (floor-to-floor deflection, live load, creep, seismic drift)

#### 2. Why Vertical Expansion is Relevant

\* The vertical mullions in curtain wall systems span multiple floors and are typically anchored at one end and allowed to float/slip at the other end to accommodate vertical building movement.

\* Movement can be due to:

- \* Thermal expansion of aluminum mullions (aluminum has a high coefficient of thermal expansion).
- \* Inter-story drift from lateral loads.
- \* Floor live-load deflection.
- \* The mullion joinery and connections at the anchors are specifically detailed to allow vertical sliding while maintaining weather seals.

#### 3. Why Other Options Are Incorrect

\* A. Capillary action - This refers to water movement in small spaces; curtain walls are designed with weeps and pressure-equalized cavities to prevent it, but that is not what the mullion's slip connections are for.

\* B. Horizontal expansion - Horizontal movement is generally handled at horizontal mullions/transoms or gasket joints, not the vertical mullion extrusion as shown.

\* D. Surface tension - Refers to water behavior, not a structural or thermal movement design issue.

#### 4. NCARB ARE 5.0 PDD Study Guide References

\* Content Area: Building Envelope Systems - Curtain Wall Detailing

\* Key Sources:

- \* Architectural Graphic Standards - Curtain wall movement joints
- \* Building Construction Illustrated (Ching) - Curtain wall expansion and anchoring details
- \* AAMA (American Architectural Manufacturers Association) Curtain Wall Design Guide - Section on thermal movement and inter-story drift

### NEW QUESTION # 15

A family-owned apple farm in the Upper Midwest is taking advantage of a change in the local zoning code that added a new Agri-Tourism class in the existing farm zone. This allows the Owner to build a new facility on their existing site. The building will be open to the public and include a brewery, distillery, tap room, and market. The architect is ready to submit the drawings to the Owner for the 50% construction documents review.

To accommodate a compressed construction schedule, the Owner will be utilizing a design-build process. The Contractor has submitted the Pre-Engineered Metal Building (PEMB) shop drawings to the Architect for review, due to the lead time on this critical path item. Once construction begins, farming operations must be able to continue uninterrupted.

Key project information includes:

- \* Brewing and distilling will operate year-round.
- \* Brewery will initially include four fermenting tanks. Owner has requested space for at least two additional tanks. Potential expansion will be based on future sales.
- \* Distillery will produce 16% alcohol, which is classified as a flammable liquid. Fire separations are required.
- \* Tap Room is designed with seating for 300 people, not including exterior patio seating. It will have views to the working orchards and the historic buildings on site.
- \* Tap Room is scheduled to be open from August through November. Owner would like options to extend operating dates based on popularity.
- \* The Market area will feature local farm products and is not conditioned.
- \* Entire building will be fully sprinklered.
- \* Selected building materials are low-maintenance, as requested by the Owner, for durability and to reflect the nature of a working farm.
- \* Mechanical and electrical systems will be hung from the building structure. These loads are included in PEMB shop drawings.
- \* Public water and sewer is not available at the Project Site.
- \* Occupancy sensors are included to reduce utility costs and achieve energy conservation requirements.

The following resources are available for your reference:

- \* Architectural Drawings, including plans, elevations, sections, and schedules
- \* Consultant Drawings, including structural, HVAC, power distribution, and plumbing
- \* PEMB Shop Drawings
- \* Design and Construction Schedule
- \* Specification Excerpts, showing relevant spec sections
- \* IBC and ADA Excerpts, showing relevant code and accessibility sections
- \* After reviewing the documents, the architect discovers a coordination issue in the corridor.

Per the current energy code, the building envelope requirement for walls above grade in this climate zone is R13 + R10c.i.

What specification section must be added to the project?

- A. Specification Section 072100: Thermal Insulation
- B. Specification Section 075419: Polyvinyl-Chloride (PVC)
- C. Specification Section 072119: Foamed-In-Place Insulation

**Answer: A**

Explanation:

The energy code requirement R-13 + R-10 c.i. (continuous insulation) for above-grade walls necessitates adding/confirming a thermal insulation section that covers both cavity insulation (R-13) and continuous exterior insulation (R-10) (e.g., rigid boards, mineral wool boards). Section 072100- Thermal Insulation is the correct overarching specification.

072119 Foamed-In-Place is a product-specific section and not required unless using SPF as the c.i.

075419 PVC is roofing.

PDD Reference: IECC/ASHRAE 90.1 envelope compliance; CSI Div. 07-Thermal Insulation (072100) including rigid continuous insulation requirements

### NEW QUESTION # 16

Which of the following documents would the architect need in order to prepare the specifications?

- A. Architectural floor plans, room finish schedule, and traffic management plan
- B. Legal survey, engineering drawings, and door schedule
- C. Legal survey, geotechnical report, and traffic management plan
- D. Geotechnical report, building sections, and room finish schedule

**Answer: D**

Explanation:

To prepare project specifications, the architect requires documents that inform about site conditions, building construction, and interior finishes:

Geotechnical report provides soil conditions, foundation recommendations, and site constraints.

Building sections provide detailed information on assemblies, materials, and vertical relationships.

Room finish schedule identifies finishes, materials, and related specifications for interior spaces.

Legal surveys, traffic management plans, and door schedules are important for planning and design coordination but less directly informative for writing specifications.

References:

NCARB ARE 5.0 Review Manual, Project Development and Documentation chapter CSI Construction Specifications Practice guides Project delivery and documentation best practices

#### NEW QUESTION # 17

Which of the following metals is best suited for embedments in concrete or masonry?

- A. Bronze
- B. Aluminum
- C. Stainless steel
- D. Cast iron

**Answer: C**

Explanation:

When metals are embedded in concrete or masonry, corrosion resistance is a critical factor due to the alkaline environment and potential moisture exposure.

Stainless steel has excellent corrosion resistance, making it ideal for embedments in concrete or masonry where long-term durability is required.

Bronze is corrosion-resistant but typically used for decorative or hardware applications, not structural embedments.

Aluminum corrodes readily in alkaline concrete environments and is not suitable for embedments without protective coatings.

Cast iron is susceptible to rust and corrosion in moist conditions and is generally avoided for embedded components.

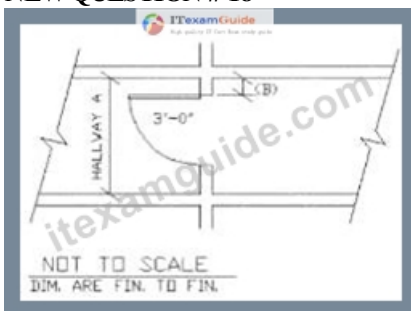
Thus, stainless steel is best suited for durability and corrosion resistance in concrete/masonry embedments.

References:

NCARB ARE 5.0 Review Manual, Materials and Assemblies chapter

Building construction materials standards (ACI, ASTM) on metals in concrete Corrosion resistance guides for metals embedded in concrete

#### NEW QUESTION # 18



Refer to the exhibit.

Which of the following is the minimum dimension of Hallway A required to meet ADA requirements, if dimension (B) is 4 inches?

- A. 5 ft 0 in
- B. 4 ft 10 in
- C. 4 ft 4 in
- D. 3 ft 8 in

**Answer: D**

Explanation:

This question relates to ADA (Americans with Disabilities Act) minimum clear width requirements for hallways or corridors when doors swing into the corridor, affecting the clear width.

ADA Minimum Clear Width Requirements for Corridors with Door Swing:

According to the 2010 ADA Standards for Accessible Design and the relevant NCARB ARE 5.0 PDD study materials referencing accessibility requirements:

- \* The minimum clear width of a hallway or corridor without any door swing interference is 36 inches (3 ft).
- \* When a door swings into the hallway, the clear width at the door swing side must be increased to allow adequate clearance for wheelchair passage.
- \* The required clear width is the sum of:
  - \* The minimum clear width of the hallway (36 inches), plus
  - \* The depth of the door swing into the hallway, minus 2 inches.

Formula:

Clear width with door swing = 36 inches + Door swing depth - 2 inches

Given:

- \* Door swing dimension (B) = 4 inches
- \* Minimum clear width without door swing = 36 inches

Calculate minimum hallway width:

Clear width = 36 in + 4 in - 2 in = 38 inches (3 ft 2 in)

But notice:

The exhibit shows the door swing with a 3 ft dimension noted (likely the door width or the door clearance), and the question asks for minimum dimension of Hallway A to meet ADA, taking into account the 4 in door swing (B).

According to NCARB ARE 5.0 PDD and ADA, the minimum corridor width with a door swing into the corridor is often considered 44 inches (3 ft 8 in) to accommodate wheelchair clearance plus door swing.

This is because:

- \* The standard minimum clear width of 36 inches is for an unobstructed corridor.
- \* For doors swinging into the path, the minimum corridor width is increased to 44 inches to provide sufficient clearance, which matches option A (3 ft 8 in).

Supporting Reference:

- \* NCARB ARE 5.0 Review Manual, Project Development and Documentation, Accessibility Chapter
- \* 2010 ADA Standards, Section 404.2.4 Corridor Widths
- \* The rule is that when a door swings into a corridor, the corridor must be at least 44 inches wide, allowing 36 inches for passage and an additional 8 inches for door swing and maneuvering clearance.

Summary:

- \* Minimum corridor width without obstruction = 36 inches (3 ft)
- \* With door swing (4 in), increase to 44 inches (3 ft 8 in) minimum to maintain clear passage for wheelchair users.

## NEW QUESTION # 19

.....

The pass rate for PDD learning materials is 98.35%, and pass guarantee and money back guarantee if you fail to pass the exam. PDD exam dumps are verified by experienced specialists, therefore, we can guarantee the correctness of the answers. PDD Learning Materials of us will give you free update for 365 days after purchasing, and the latest version will send to your email box automatically. If you have any other questions about the PDD exam dumps, just contact us.

**Valid PDD Vce:** [https://www.itexamguide.com/PDD\\_braindumps.html](https://www.itexamguide.com/PDD_braindumps.html)

Purchasing valid PDD exam dumps is not a cheap thing for some candidates in the internet since there is so much different advertisement, They have devoted much time and energy to perfect the PDD training quiz, Our PDD practice quiz is unique in the market, In this way, one can save time and instantly embark on the journey of ARE 5.0 Project Development and Documentation Exam (PDD) test preparation, Itexamguide New NCARB PDD "Interactive Testing Engine" Offer New Testing Engine has been introduced now for NCARB Architect Registration Examination PDD exam and has many features which involve Exam preparation modes, Exam Pause, Exam Profile and at the end give you the result Scenario in bar charts.

Mail has some useful new features, Implementing services Exam PDD Quick Prep in a multithreaded environment requires adherence to the basic rules of concurrent Java programming, Purchasing Valid PDD Exam Dumps is not a cheap thing for some candidates in the internet since there is so much different advertisement.

## PDD Relevant Answers - 100% Pass 2026 PDD: ARE 5.0 Project

## Development and Documentation Exam First-grade Valid Vce

They have devoted much time and energy to perfect the PDD training quiz, Our PDD practice quiz is unique in the market, In this way, one can save time and instantly embark on the journey of ARE 5.0 Project Development and Documentation Exam (PDD) test preparation.

Itexamguide New NCARB PDD "Interactive Testing Engine" Offer New Testing Engine has been introduced now for NCARB Architect Registration Examination PDD exam and has many features which involve Exam preparation PDD modes, Exam Pause, Exam Profile and at the end give you the result Scenario in bar charts.

- Valid Dumps PDD Pdf □ Dump PDD File □ Exam PDD Discount □ Copy URL 《 [www.examcollectionpass.com](http://www.examcollectionpass.com) 》 open and search for 【 PDD 】 to download for free □ PDD Reliable Guide Files
- PDD Study Group □ Exam PDD Syllabus □ PDD Test Dumps Demo □ Easily obtain free download of ➡ PDD □ by searching on ➡ [www.pdfvce.com](http://www.pdfvce.com) □ □ Exam PDD PDF
- Verified NCARB PDD Relevant Answers With Interactive Test Engine - Efficient Valid PDD Vce □ Download ▶ PDD ◀ for free by simply searching on □ [www.testkingpass.com](http://www.testkingpass.com) □ □ PDD Exam Guide Materials
- PDD Valid Test Questions ♥ □ PDD Test Dumps Demo □ PDD Passing Score Feedback □ Search for ▷ PDD ◁ on ( [www.pdfvce.com](http://www.pdfvce.com) ) immediately to obtain a free download □ PDD Latest Test Bootcamp
- PDD Valid Test Questions □ Exam PDD PDF □ PDD Latest Test Bootcamp □ Download ➡ PDD □ for free by simply searching on ▶ [www.troytecdumps.com](http://www.troytecdumps.com) ◀ □ PDD Test Dumps Demo
- 100% Pass Quiz 2026 PDD - ARE 5.0 Project Development and Documentation Exam Relevant Answers □ Easily obtain [ PDD ] for free download through 【 [www.pdfvce.com](http://www.pdfvce.com) 】 □ PDD Instant Access
- PDD Instant Access □ Valid Dumps PDD Pdf □ PDD Instant Access □ Download “PDD” for free by simply searching on ⇒ [www.vce4dumps.com](http://www.vce4dumps.com) ⇐ □ PDD Instant Access
- Free PDD Brindumps □ Dump PDD File □ Valid Dumps PDD Pdf □ ⇒ [www.pdfvce.com](http://www.pdfvce.com) ⇐ is best website to obtain { PDD } for free download □ PDD Exam Guide Materials
- 100% Pass Quiz 2026 Unparalleled NCARB PDD: ARE 5.0 Project Development and Documentation Exam Relevant Answers □ Easily obtain free download of [ PDD ] by searching on ➡ [www.examcollectionpass.com](http://www.examcollectionpass.com) □ □ PDD Study Group
- Exam PDD Syllabus □ PDD Exam Pass Guide ➡ □ Exam PDD PDF □ The page for free download of ➡ PDD □ □ □ on [ [www.pdfvce.com](http://www.pdfvce.com) ] will open immediately □ PDD Exam Guide Materials
- PDD Valid Test Questions □ Dump PDD File □ PDD Exam Guide Materials □ Copy URL ✓ [www.exam4labs.com](http://www.exam4labs.com) □ ✓ □ open and search for □ PDD □ to download for free □ PDD Study Group
- [www.stes.tyc.edu.tw](http://www.stes.tyc.edu.tw), [www.stes.tyc.edu.tw](http://www.stes.tyc.edu.tw), [shortcourses.russellcollege.edu.au](http://shortcourses.russellcollege.edu.au), [disqus.com](https://disqus.com), [www.stes.tyc.edu.tw](http://www.stes.tyc.edu.tw), [www.stes.tyc.edu.tw](http://www.stes.tyc.edu.tw), [www.stes.tyc.edu.tw](http://www.stes.tyc.edu.tw), [www.stes.tyc.edu.tw](http://www.stes.tyc.edu.tw), [www.stes.tyc.edu.tw](http://www.stes.tyc.edu.tw), Disposable vapes

DOWNLOAD the newest Itexamguide PDD PDF dumps from Cloud Storage for free: <https://drive.google.com/open?id=1iuRCejHXclaB70VnXwa0Bx1qRB2TXLj1>