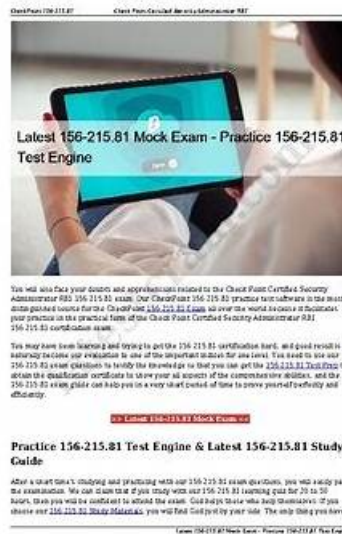


# 156-215.81 Valid Test Practice - Latest 156-215.81 Exam Discount



What's more, part of that Real4Prep 156-215.81 dumps now are free: [https://drive.google.com/open?id=1sdSZNurX9d\\_Jcwesc5odX4fqSiiEwUcT](https://drive.google.com/open?id=1sdSZNurX9d_Jcwesc5odX4fqSiiEwUcT)

With the rapid development of the world economy and frequent contacts between different countries, the talent competition is increasing day by day, and the employment pressure is also increasing day by day. Our company provides three different versions to choice for our customers. The software version of our 156-215.81 exam question has a special function that this version can simulate test-taking conditions for customers. If you feel very nervous about exam, we think it is very necessary for you to use the software version of our 156-215.81 Guide Torrent. The simulated tests are similar to recent actual exams in question types and degree of difficulty. By simulating actual test-taking conditions, we believe that you will relieve your nervousness before examination.

The CheckPoint 156-215.81 dumps are given regular update checks in case of any update. We make sure that candidates are not preparing for the CheckPoint 156-215.81 exam from outdated and unreliable 156-215.81 study material. Real4Prep offers you a free demo version of the CheckPoint 156-215.81 Dumps. This way candidates can easily check the validity and reliability of the 156-215.81 exam products without having to spend time.

>> 156-215.81 Valid Test Practice <<

**Latest 156-215.81 Exam Discount, Authentic 156-215.81 Exam Hub**

Our company has successfully created ourselves famous brands in the past years, and more importantly, all of the 156-215.81 exam braindumps from our company have been authenticated by the international authoritative institutes and cater for the demands of all customers at the same time. We are attested that the quality of the 156-215.81 test prep from our company have won great faith and favor of customers. We persist in keeping close contact with international relative massive enterprise and have broad cooperation in order to create the best helpful and most suitable 156-215.81 study practice question for all customers. We can promise that our company will provide the authoritative study platform for all people who want to prepare for the exam. If you buy the 156-215.81 test prep from our company, we can assure to you that you will have the chance to enjoy the authoritative study platform provided by our company to improve your study efficiency.

The Check Point Certified Security Administrator R81 certification exam is intended for professionals who work in the field of network security and want to validate their expertise in configuring and managing Check Point Security Gateways. Check Point Certified Security Administrator R81 certification exam covers a wide range of topics, including network design, installation, and configuration, as well as troubleshooting and optimization of Check Point Security Gateway systems.

CheckPoint 156-215.81 Certification Exam is a valuable certification for individuals seeking to demonstrate their knowledge and skills in Check Point's network security technologies. 156-215.81 exam can help individuals enhance their careers, gain recognition in the industry, and demonstrate their proficiency in network security administration.

## CheckPoint Check Point Certified Security Administrator R81 Sample Questions (Q10-Q15):

### NEW QUESTION # 10

Security Gateway software blades must be attached to what?

- A. Management server
- B. Security Gateway
- C. Management container
- D. Security Gateway container

**Answer: D**

Explanation:

Security Gateway software blades must be attached to a Security Gateway container. A Security Gateway container is a logical object that represents a physical or virtual machine that runs the Security Gateway software. A software blade is a modular security feature that can be enabled or disabled away container. A software blade can provide functions such as firewall, VPN, IPS, anti-virus, anti-bot, application control, URL filtering, etc. References: [Security Gateway Containers], [Software Blades]

### NEW QUESTION # 11

One of major features in R80.x SmartConsole is concurrent administration. Which of the following is NOT possible considering that AdminA, AdminB, and AdminC are editing the same Security Policy?

- A. AdminA and AdminB are editing the same rule at the same time.
- B. AdminA, AdminB and AdminC are editing three different rules at the same time.
- C. AdminC sees a lock icon which indicates that the rule is locked for editing by another administrator.
- D. AdminB sees a pencil icon next the rule that AdminB is currently editing.

**Answer: A**

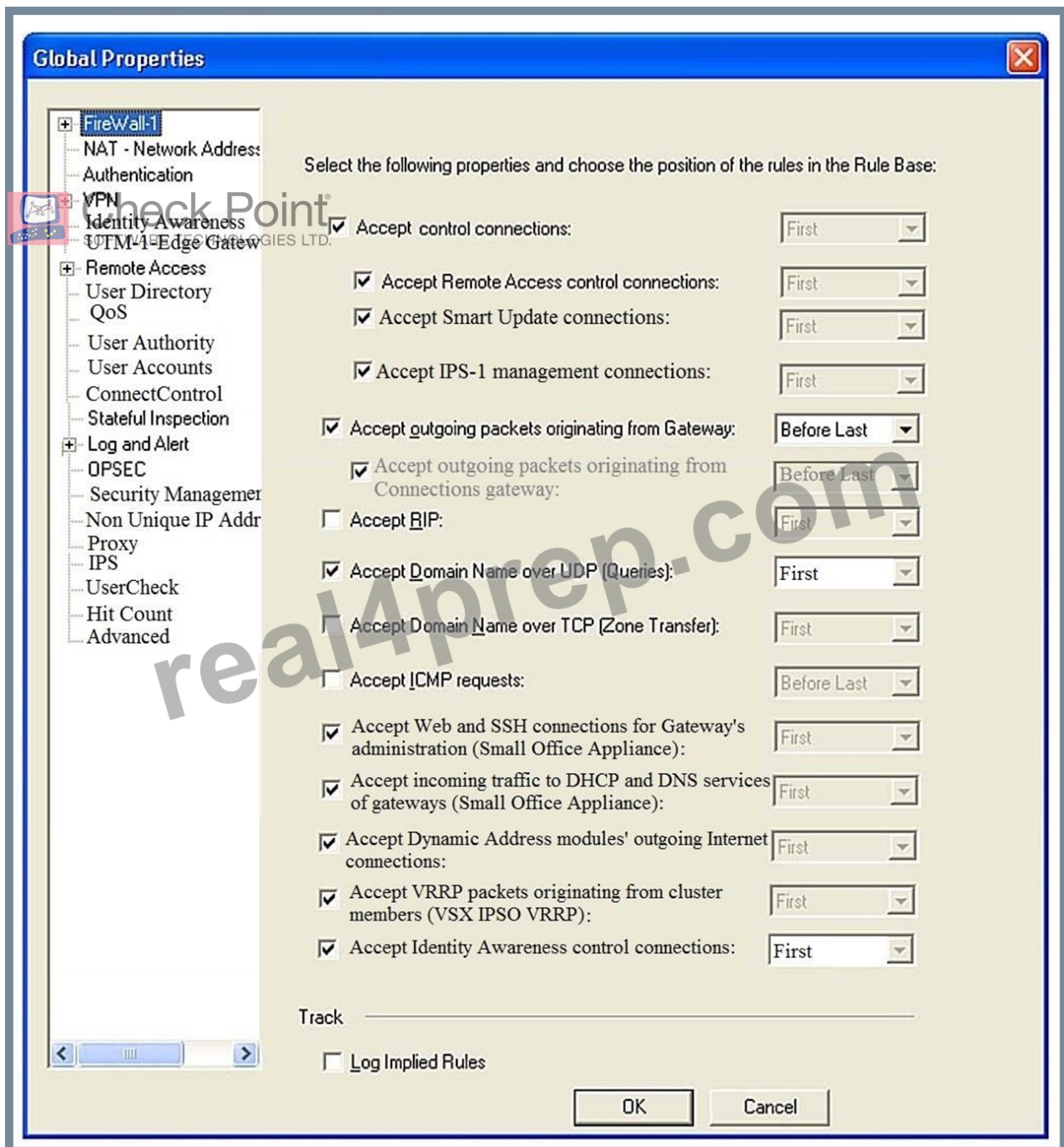
Explanation:

Explanation

One of the major features in R80.x SmartConsole is concurrent administration, which allows multiple administrators to work on the same Security Policy at the same time<sup>12</sup>. However, only one administrator can edit a rule at a time. If AdminA and AdminB are editing the same rule at the same time, it will cause a conflict and prevent them from saving their changes<sup>12</sup>. Therefore, the correct answer is B. Admin A and Admin B are editing the same rule at the same time.

### NEW QUESTION # 12

Consider the Global Properties following settings:



The selected option "Accept Domain Name over UDP (Queries)" means:

- A. All UDP Queries will be accepted by the traffic allowed through all interfaces and this will be done before first explicit rule written by Administrator in a Security Policy.
- B. All UDP Queries will be accepted by the traffic allowed by first explicit rule written by Administrator in a Security Policy.
- C. No UDP Queries will be accepted by the traffic allowed through all interfaces and this will be done before first explicit rule written by Administrator in a Security Policy.
- D. UDP Queries will be accepted by the traffic allowed only through interfaces with external anti-spoofing topology and this will be done before first explicit rule written by Administrator in a Security Policy.

**Answer: D**

Explanation:

The selected option "Accept Domain Name over UDP (Queries)" means that UDP Queries will be accepted by the traffic allowed only through interfaces with external anti-spoofing topology and this will be done before first explicit rule written by Administrator in a Security Policy. This option enables the Security Gateway to accept DNS queries from external hosts and forward them to internal DNS servers. The queries are accepted by an implied rule that is applied before the explicit rules in the Security Policy. The implied rule only allows queries from interfaces that have external anti-spoofing groups defined. References: Check Point R81 Quantum

### NEW QUESTION # 13

You are the Check Point administrator for Alpha Corp with an R81 Check Point estate. You have received a call by one of the management users stating that they are unable to browse the Internet with their new tablet connected to the company Wireless. The Wireless system goes through the Check Point Gateway.

How do you review the logs to see what the problem may be?

- A. Open SmartView Tracker and check all the IP logs for the tablet
- B. Open SmartLog and connect remotely to the IP of the wireless controller
- **C. Open SmartView Tracker and filter the logs for the IP address of the tablet**
- D. Open SmartLog and query for the IP address of the Manager's tablet

**Answer: C**

### NEW QUESTION # 14

Which of the following is a new R80.10 Gateway feature that had not been available in R77.X and older?

- A. Time object to a rule to make the rule active only during specified times.
- **B. Sub Policies are sets of rules that can be created and attached to specific rules. If the rule is matched, inspection will continue in the sub policy attached to it rather than in the next rule.**
- C. The rule base can be built of layers, each containing a set of the security rules. Layers are inspected in the order in which they are defined, allowing control over the rule base flow and which security functionalities take precedence.
- D. Limits the upload and download throughput for streaming media in the company to 1 Gbps.

**Answer: B**

### NEW QUESTION # 15

.....

Because our 156-215.81 practice materials are including the best thinking from upfront experts with experience more than ten years. By using our 156-215.81 study guide, your possibility of getting certificate and being success will increase dramatically and a series of benefits will come along in your life. So our 156-215.81 real quiz is versatile and accessible to various exam candidates. Just trust us and you can get what you want for sure!

**Latest 156-215.81 Exam Discount:** <https://www.real4prep.com/156-215.81-exam.html>

- Reliable 156-215.81 Test Dumps ☐ Latest 156-215.81 Exam Answers ☐ Reliable 156-215.81 Test Dumps ☐ Search for { 156-215.81 } on ⇒ [www.pass4test.com](http://www.pass4test.com) ⇐ immediately to obtain a free download ☐ Reliable 156-215.81 Test Dumps
- Experience The Real CheckPoint 156-215.81 Exam With Web-Based Practice Exam Software ☐ Easily obtain **【 156-215.81 】** for free download through ( [www.pdfvce.com](http://www.pdfvce.com) ) ☐ Reliable 156-215.81 Test Dumps
- Updated CheckPoint - 156-215.81 - Check Point Certified Security Administrator R81 Valid Test Practice ☐ Open “ [www.prep4away.com](http://www.prep4away.com) ” enter ☐ 156-215.81 ☐ and obtain a free download ☐ Reliable 156-215.81 Test Dumps
- Download CheckPoint 156-215.81 Real Dumps and Start This Journey (M) Easily obtain [ 156-215.81 ] for free download through ☐ [www.pdfvce.com](http://www.pdfvce.com) ☐ ☐ 156-215.81 Dumps Free Download
- 156-215.81 100% Exam Coverage ☐ Download 156-215.81 Free Dumps ☐ Valid 156-215.81 Exam Topics ☐ The page for free download of 《 156-215.81 》 on ☐ [www.exams4collection.com](http://www.exams4collection.com) ☐ will open immediately ☐ 156-215.81 Test Voucher
- Experience The Real CheckPoint 156-215.81 Exam With Web-Based Practice Exam Software ☐ Search for { 156-215.81 } and obtain a free download on ☐ [www.pdfvce.com](http://www.pdfvce.com) ☐ ☐ 156-215.81 Test Voucher
- Avail Updated and Latest 156-215.81 Valid Test Practice to Pass 156-215.81 on the First Attempt ☐ Search on ➡ [www.free4dump.com](http://www.free4dump.com) ☐ for ( 156-215.81 ) to obtain exam materials for free download ☐ 156-215.81 Valid Study Guide
- Reliable 156-215.81 Test Dumps ☐ 156-215.81 Vce Exam ☐ Latest 156-215.81 Exam Answers ☐ Open website ➡ [www.pdfvce.com](http://www.pdfvce.com) ☐ and search for ☐ 156-215.81 ☐ for free download ☐ 156-215.81 Actual Brindumps
- Latest 156-215.81 Exam Discount ☐ New 156-215.81 Test Cost x Valid 156-215.81 Exam Topics ☐ Easily obtain

free download of 156-215.81 by searching on [ [www.prep4away.com](http://www.prep4away.com) ] 156-215.81 Vce Exam

- 156-215.81 Actual Lab Questions: Check Point Certified Security Administrator R81 - 156-215.81 Study Guide Search for > 156-215.81 and download exam materials for free through ( [www.pdfvce.com](http://www.pdfvce.com) ) 156-215.81 100% Exam Coverage
- Updated CheckPoint - 156-215.81 - Check Point Certified Security Administrator R81 Valid Test Practice Search for 156-215.81 and easily obtain a free download on ➡ [www.free4dump.com](http://www.free4dump.com) 156-215.81 Valid Study Guide
- [mikemil988.laowaiblog.com](http://mikemil988.laowaiblog.com), [heibaficroncologycourse.com](http://heibaficroncologycourse.com), [adamree449.blogocial.com](http://adamree449.blogocial.com), [mikemil988.blogsumer.com](http://mikemil988.blogsumer.com), [ncon.edu.sa](http://ncon.edu.sa), [academy.wassinamanssour.com](http://academy.wassinamanssour.com), [tedcole945.newsbloger.com](http://tedcole945.newsbloger.com), 47.121.119.212, [adamree449.blog-ezine.com](http://adamree449.blog-ezine.com), [myportal.utt.edu.tt](http://myportal.utt.edu.tt), [myportal.utt.edu.tt](http://myportal.utt.edu.tt), [myportal.utt.edu.tt](http://myportal.utt.edu.tt), [myportal.utt.edu.tt](http://myportal.utt.edu.tt), [myportal.utt.edu.tt](http://myportal.utt.edu.tt), [myportal.utt.edu.tt](http://myportal.utt.edu.tt), [myportal.utt.edu.tt](http://myportal.utt.edu.tt), [myportal.utt.edu.tt](http://myportal.utt.edu.tt), Disposable vapes

DOWNLOAD the newest Real4Prep 156-215.81 PDF dumps from Cloud Storage for free: [https://drive.google.com/open?id=1sdSZNurX9d\\_Jcwesc5odX4fqSiiEwUcT](https://drive.google.com/open?id=1sdSZNurX9d_Jcwesc5odX4fqSiiEwUcT)