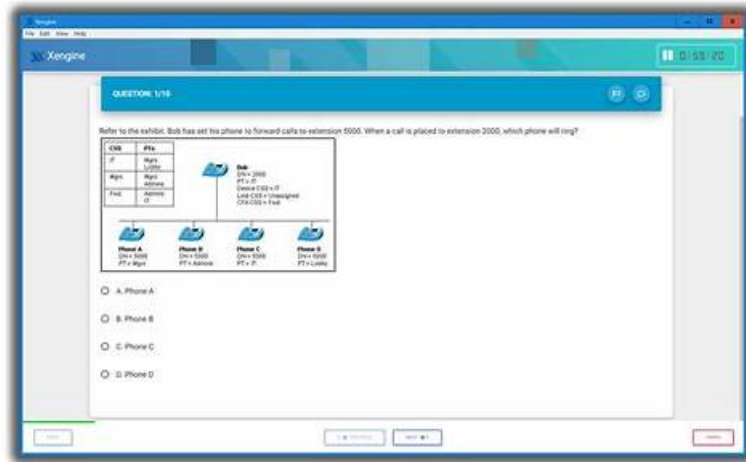


JN0-232 Practice Engine & JN0-232 Reliable Cram Materials



What's more, part of that ExamBoasts JN0-232 dumps now are free: https://drive.google.com/open?id=1b6Ttkqmlipg_grKc6toC36x22DpNTNz

The product ExamBoosts provide with you is compiled by professionals elaborately and boosts varied versions which aimed to help you pass the JN0-232 exam by the method which is convenient for you. It is not only cheaper than other dumps but also more effective. The high pass rate of our JN0-232 Study Materials has been approved by thousands of candidates, they recognized our website as only study tool to pass JN0-232 exam.

ExamBoosts is the leading position in this field and famous for high pass rate. If you are headache about your qualification exams, our JN0-232 learning guide materials will be a great savior for you. Now it is your opportunity that we provide the best valid and professional JN0-232 study guide materials which have 100% pass rate. If you really want to Clear JN0-232 Exam and gain success one time, choosing us will be the wise thing for you. If you hesitate about us please pay attention on below about our satisfying service and high-quality JN0-232 guide torrent.

>> JN0-232 Practice Engine <<

Free PDF Quiz Juniper - JN0-232 Perfect Practice Engine

Someone around you must be using our JN0-232 exam questions. The users of our JN0-232 exam materials are really very extensive. Or, you can consult someone who has participated in the JN0-232 exam. They must know or use our products. We can confidently say that our products are leading in the products of the same industry. The richness and authority of JN0-232 Exam Materials are officially certified.

Juniper Security, Associate (JNCIA-SEC) Sample Questions (Q44-Q49):

NEW QUESTION # 44

You have created a series of security policies permitting access to a variety of services. You now want to create a policy that blocks access to all other services for all user groups.

What should you create in this scenario?

- A. IDP policy
- B. global security policy
- C. Juniper ATP policy
- D. integrated user firewall policy

Answer: B

Explanation:

To enforce a catch-all blocking policy after other specific policies, the correct solution is a global security policy (Option A).

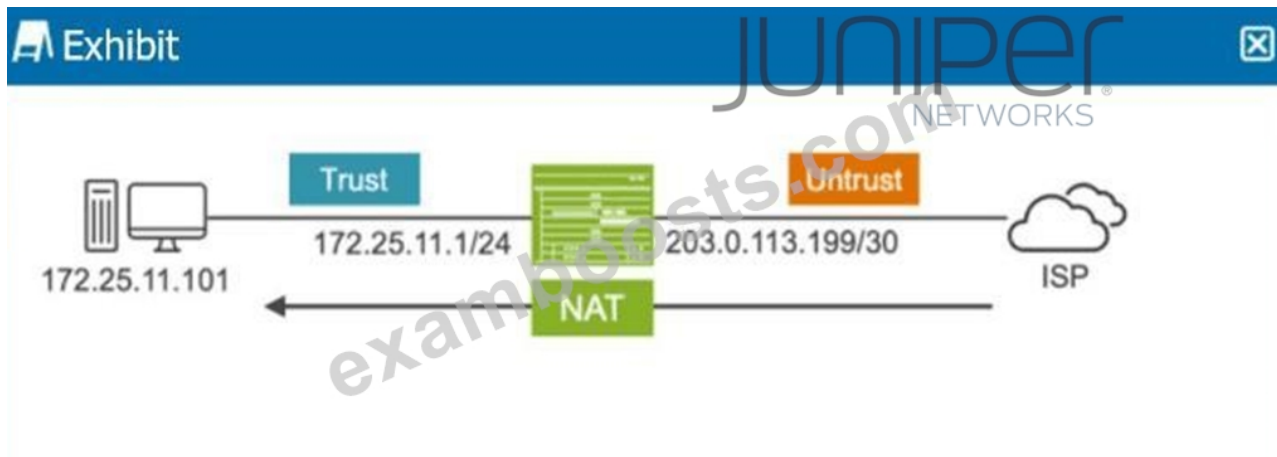
- * Global policies can apply universally across zones, and an administrator can configure a final "deny all" rule to block any unmatched traffic.
- * ATP policy (Option B): Protects against advanced threats, not used for catch-all rule enforcement.
- * IDP policy (Option C): Focuses on intrusion detection and prevention signatures, not general traffic blocking.
- * Integrated user firewall policy (Option D): Applies policies based on user identity, but it does not provide a universal block across all services.

Correct Solution: Global security policy

Reference: Juniper Networks - Global Security Policies, Junos OS Security Fundamentals.

NEW QUESTION # 45

Click the Exhibit button.



You must ensure that sessions can only be established from the external device. Referring to the exhibit, which type of NAT is being performed?

- A. static PAT only
- **B. destination NAT only**
- C. source NAT only
- D. static NAT and source NAT

Answer: B

Explanation:

From the exhibit:

- * The internal host (172.25.11.101) is located in the Trust zone.
- * The external address (203.0.113.199/30) is used for communication with the ISP.
- * The requirement is that sessions can only be initiated from the external device (the ISP or untrust side) toward the internal host. This requirement matches the behavior of Destination NAT:
- * Destination NAT only (Option A): Maps the external/public IP (203.0.113.199) to the internal/private IP (172.25.11.101). This allows inbound connections to be translated and sent to the internal host. The internal host cannot initiate outbound sessions, since the translation only applies to inbound traffic.
- * Source NAT only (Option B): Used for outbound sessions from internal private IPs to the Internet. This does not meet the requirement.
- * Static PAT (Option C): Maps a single port of a public IP to a private IP/port. The exhibit does not indicate a port-based translation.
- * Static NAT and source NAT (Option D): Would provide bidirectional communication, allowing sessions to be initiated in both directions. This contradicts the requirement.

Correct NAT Type: Destination NAT only

Reference: Juniper Networks - NAT Types (Source NAT, Destination NAT, Static NAT), Junos OS Security Fundamentals.

NEW QUESTION # 46

What is a purpose for creating multiple routing instances on an SRX Series Firewall device?

- A. to manage routing protocols and updates
- **B. to maintain separation of routing information for security purposes**

- C. to simplify the configuration of network interfaces
- D. to enable network monitoring through SNMP

Answer: B

Explanation:

Multiplexing instances (such as virtual routers or VRFs) can be configured on an SRX to provide separation of routing tables. This enables:

- * Maintaining separation of routing information (Option B): Different departments, tenants, or customers can have their own independent routing domains for security and isolation.
- * SNMP monitoring (Option A) is unrelated to routing instances.
- * Routing protocols (Option C) can be run inside each instance, but the purpose of multiple instances is separation, not general routing protocol management.
- * Simplifying interface configuration (Option D) is not a function of routing instances.

Correct Purpose: To maintain separation of routing information for security purposes.

Reference: Juniper Networks - Routing Instances and Virtual Routers, Junos OS Security Fundamentals.

NEW QUESTION # 47

Which two statements are correct about NAT and security policy processing? (Choose two.)

- A. The security policy is evaluated before source NAT.
- B. The security policy is evaluated before destination NAT.
- C. The security policy is evaluated after source NAT.
- D. The security policy is evaluated after destination NAT.

Answer: C,D

Explanation:

The packet processing order in SRX with NAT and policies is:

- * Destination NAT (applies first, for inbound traffic).
- * Security Policy Evaluation (after destination NAT, before source NAT).
- * Source NAT (applies last, for outbound traffic).
- * Option A: Incorrect. Policies are not evaluated before destination NAT.
- * Option B: Correct. Security policies are evaluated before source NAT but after destination NAT. So in terms of order, policies are processed prior to source NAT.
- * Option C: Incorrect. Policies are not evaluated before source NAT - they are evaluated before source NAT is applied.
- * Option D: Correct. Policies are evaluated after destination NAT.

Correct Statements: B and D

Reference: Juniper Networks - Packet Flow Processing Order (NAT and Policies), Junos OS Security Fundamentals.

NEW QUESTION # 48

You are asked to enable trace options to debug the packet flow.

In this scenario, which flag would you configure at the [edit security flow trace options] hierarchy?

- A. packet-dump
- B. basic-datapath
- C. general
- D. state

Answer: A

Explanation:

Trace options in the security flow hierarchy provide debugging for how packets are processed in the flow module.

- * The correct flag to capture detailed packet-level debugging is packet-dump (Option A). This outputs packet-level trace messages showing flow decisions, NAT processing, and policy matches.
- * general (Option B): Provides basic flow trace information but not full packet inspection.
- * state (Option C): Tracks flow state transitions, less detailed than packet-dump.
- * basic-datapath (Option D): Provides high-level datapath debugging, not detailed flow troubleshooting.

Correct Flag: packet-dump

- Test JN0-232 Online ☐ Exam JN0-232 Overviews ☐ JN0-232 Valid Dumps Ppt ☐ Download ➡ JN0-232 ☐☐☐ for free by simply searching on ☐ www.pdf dumps.com ☐ ☐Valid JN0-232 Practice Questions
- Latest JN0-232 Test Question ☐ Exam JN0-232 Material ☐ Certification JN0-232 Cost ☐ Download ☐ JN0-232 ☐ for free by simply entering ☐ www.pdfvce.com ☐ website ☐ JN0-232 Valid Mock Test
- 2026 Accurate JN0-232 Practice Engine | 100% Free JN0-232 Reliable Cram Materials ☐ Copy URL ☐ www.prep4sures.top ☐ open and search for “JN0-232” to download for free ☐ JN0-232 Reliable Exam Sample
- JN0-232 Updated Demo ☐ Certification JN0-232 Cost ☐ Test JN0-232 Online ☐ Open website “www.pdfvce.com” and search for ✓ JN0-232 ☐ ✓ ☐ for free download ☐ JN0-232 Pass Guarantee
- JN0-232 Practice Engine - Free PDF 2026 Juniper First-grade JN0-232 Reliable Cram Materials ☐ The page for free download of 「 JN0-232 」 on ▶ www.prepawayete.com ◀ will open immediately ☐ Test JN0-232 Online
- 100% Pass 2026 Juniper JN0-232: Security, Associate (JNCIA-SEC) Useful Practice Engine ☐ Search for ➡ JN0-232 ☐ ☐ and download it for free on ▶ www.pdfvce.com ◀ website ☐ JN0-232 Pass Guarantee
- 2026 Pass-Sure 100% Free JN0-232 – 100% Free Practice Engine | Security, Associate (JNCIA-SEC) Reliable Cram Materials ☐ Search for ☐ JN0-232 ☐ and download exam materials for free through ⇒ www.examdiscuss.com ⇐ ☐ ☐Dumps JN0-232 Discount
- Exam JN0-232 Details ☐ Exam JN0-232 Details ☐ JN0-232 Valid Dumps Ppt ☐ Simply search for 「 JN0-232 」 for free download on ➡ www.pdfvce.com ☐ ☐ JN0-232 Valid Dumps Ppt
- Reliable JN0-232 Braindumps Book ☐ Training JN0-232 Kit ☐ JN0-232 Test Cram ☐ Copy URL ☐ www.vce4dumps.com ☐ open and search for { JN0-232 } to download for free ☐ Valid Dumps JN0-232 Sheet
- JN0-232 Test Cram ☐ JN0-232 Reliable Exam Sample ☐ JN0-232 Valid Dumps Ppt ☐ Enter “www.pdfvce.com” and search for (JN0-232) to download for free ☐Dumps JN0-232 Discount
- Latest JN0-232 Test Question ☐ Exam JN0-232 Details ☐ JN0-232 Pass Guarantee ☐ Open ☀
www.pdf dumps.com ☐ ☀ ☐ and search for 《 JN0-232 》 to download exam materials for free ☐Dumps JN0-232 Discount
- myportal.utt.edu.tt, myportal.utt.edu.tt, myportal.utt.edu.tt, myportal.utt.edu.tt, myportal.utt.edu.tt, myportal.utt.edu.tt,

BONUS!!! Download part of ExamBoosts JN0-232 dumps for free: <https://drive.google.com/open?id=1b6Ttkqmlipg-grKc6toC36x22DpNTNz>