

Exam 350-501 Labs | 350-501 New Test Materials



BONUS!!! Download part of VCETorrent 350-501 dumps for free: https://drive.google.com/open?id=1o3jwr3IST094cIgy-u-ARdifH_3ODtUq

As long as you can provide us with a transcript or other proof of your failure, we can refund you the full amount immediately. The goal of our 350-501 exam questions is always to get you through the 350-501 exam. If you don't pass, we won't earn you any money. This is what we should do for you as a responsible company. But our 350-501 Study Materials have the high pass rate as 98% to 100%, so it is guarantee for you to pass.

Cisco 350-501 certification exam, also known as Implementing and Operating Cisco Service Provider Network Core Technologies, is a test that evaluates a candidate's knowledge and skills in the field of service provider networking. 350-501 exam is designed to validate the abilities of professionals who work in service provider environments and want to enhance their knowledge of core technologies.

Cisco 350-501 certification exam is an essential requirement for professionals who want to obtain the CCNP Service Provider certification. 350-501 exam tests the candidate's knowledge and skills in implementing and operating Cisco service provider network core technologies. Passing the exam validates the candidate's expertise in service provider networking and opens up new career opportunities in the industry.

Cisco 350-501 Exam is a challenging but rewarding certification that validates the knowledge and skills of professionals in implementing and operating service provider network technologies. Candidates who pass 350-501 exam can gain recognition for their expertise, advance their careers, and open up new job opportunities. With the right preparation and training, candidates can pass 350-501 exam and gain the Cisco Certified Specialist - Service Provider Core certification.

>> Exam 350-501 Labs <<

350-501 New Test Materials, Latest 350-501 Learning Materials

Compared with our PDF version of 350-501 training guide, you will forget the so-called good, although all kinds of digital device convenient now we read online to study for the 350-501 exam, but many of us are used by written way to deepen their memory patterns. Our PDF version of 350-501 prep guide can be very good to meet user demand in this respect, allow the user to read and write in a good environment continuously consolidate what they learned. And the PDF version of 350-501 learning guide can be taken to anywhere you like, you can practice it at any time as well.

Cisco Implementing and Operating Cisco Service Provider Network Core Technologies Sample Questions (Q174-Q179):

NEW QUESTION # 174

SIMULATION 7

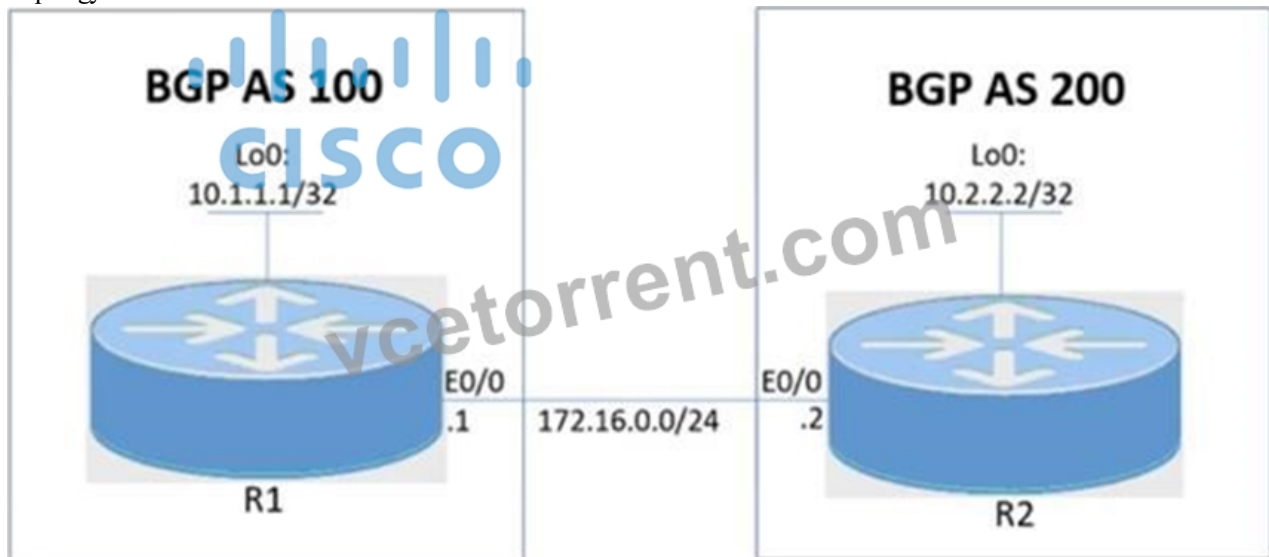
Guidelines

This is a lab item in which tasks will be performed on virtual devices.

- Refer to the Tasks tab to view the tasks for this lab item.
- Refer to the Topology tab to access the device console(s) and perform the tasks.

- Console access is available for all required devices by clicking the device icon or using the tab(s) above the console window.
- All necessary preconfigurations have been applied.
- Do not change the enable password or hostname for any device.
- Save your configurations to NVRAM before moving to the next item.
- Click Next at the bottom of the screen to submit this lab and move to the next question.
- When Next is clicked, the lab closes and cannot be reopened.

Topology



Tasks

R1 and R2 currently have an eBGP connection. Configure and verify these tasks on R1 and R2:

1. Apply the preconfigured route map R1-TO-R2 and R1 to receive the R2 Loopback address on R1.
2. Apply the preconfigured route map R2-TO-R1 and R2 to receive the R1 Loopback address on R1.
3. R1 must advertise network 10.1.1.1/32 toward R2. Redistribution is not allowed.
4. R2 must advertise network 10.2.2.2/32 toward R1. Redistribution is not allowed.

Answer:

Explanation:

R1:

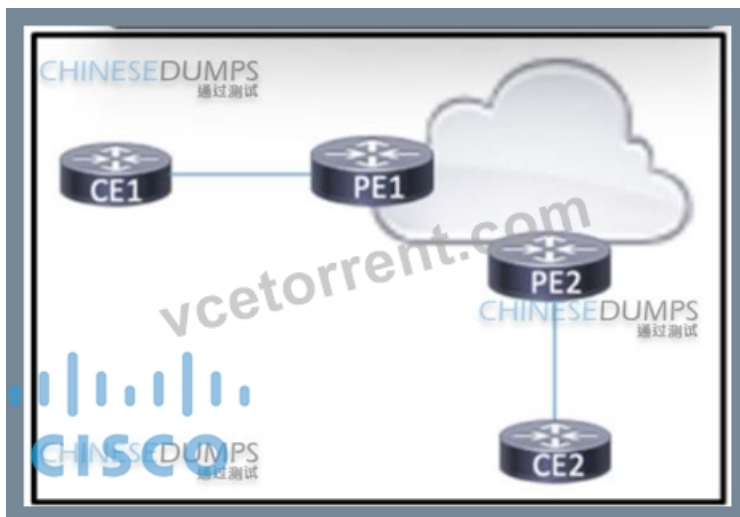
```
router bgp 100
address-family ipv4
nei 172.16.0.2 route-map R1-TO-R2 in
network 10.1.1.1 mask 255.255.255.255
copy run start
```

R2:

```
router bgp 200
address-family ipv4
network 10.2.2.2 mask 255.255.255.255
nei 172.16.0.1 route-map R2-TO-R1 in
copy run start
```

NEW QUESTION # 175

Refer to the exhibit.



Refer to the exhibit BGP is running in the core of the service provider to exchange routes for its customers, and OSPF serves as the PE-CE routing protocol. The service provider's existing customer at CE1 is opening a new office in a different geographical location connected via CE2. A network engineer must update the BGP implementation so that PE1 and PE2 will share routes and provide communication between CE1 and CE2. Which action must the engineer take?

- A. Configure CE2 to establish a BGP relationship with PE1 and PE2
- B. Configure CE1 and CE2 with a pseudowire that will run over the service provider core.
- C. Configure PE1 and PE2 to redistribute OSPF from the VRF for the customer into BGP
- **D. Configure PE1 and PE2 to mutually redistribute BGP and OSPF in the VRF for the customer.**

Answer: D

NEW QUESTION # 176

Which module refers to the network automation using Ansible?

- **A. the iosxr_command module to issue run commands on remote devices**
- B. the iosxr_user module to manage banners for users in the local database
- C. the iosxr_system module to collect facts from remote devices
- D. the iosxr_logging module to run debugging for severity levels 2 to 5

Answer: A

Explanation:

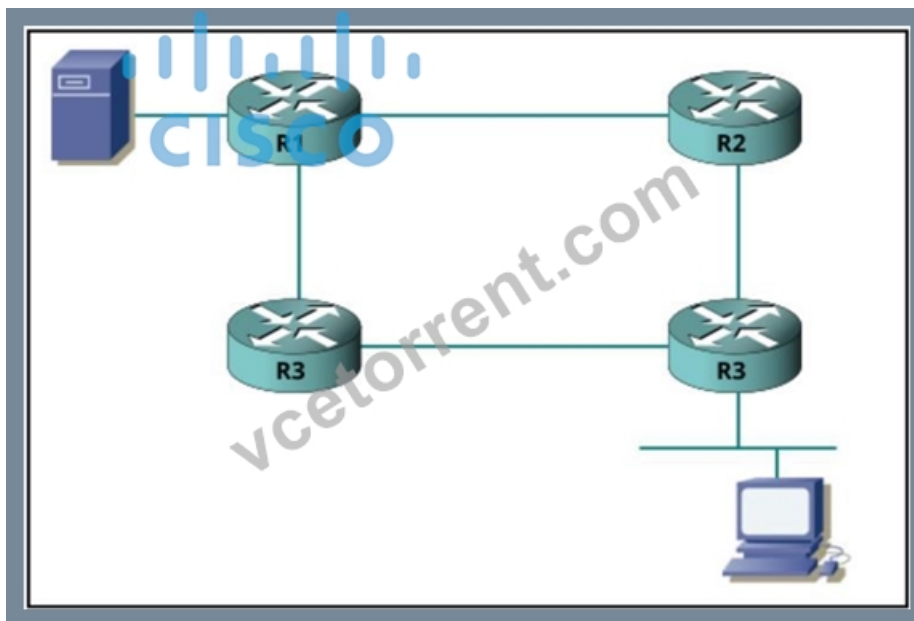
The `iosxr_command` module in Ansible is used to issue commands on remote devices running Cisco IOS XR. This module allows network administrators to execute operational commands on Cisco routers and switches, which is essential for tasks such as retrieving information or applying configuration changes. It is a part of network automation using Ansible, which simplifies the management of network devices by automating repetitive tasks.

NEW QUESTION # 177

Refer to the exhibit. R1 is connected to a server that is used by hosts residing on R3. The networking team decided to implement real-time traffic monitoring on the Ethernet link between R1 and R4 due to the traffic loss on the segment. Traffic on the other segments must not be affected by the solution.

Which two configuration must the engineer apply to R1 on the interface connected to R4?

(Choose two.)



- A. interface TenGigE 0/1/0/0
 - ethernet oam
 - link-monitor
 - symbol-period window 60000
 - symbol-period threshold low 10000000 high 60000000
 - frame window 60
- B. mep crosscheck
 - mep-id 10
 - mep-id 20
 - interface gigabitethernet 0/1/0/1
 - ethernet cfm
 - mep domain Dm1 service Sv1 mep-id 1
 - commit
- C. interface TenGigE 0/1/0/0
 - ethernet oam
 - link-monitor
 - symbol-period window 50000
 - symbol-period threshold low 10000000 high 50000000
 - frame window 1000
 - frame threshold low 10000000 high 50000000
 - frame-period window 50000
 - frame-period threshold low 200 high 11000000
 - frame-seconds window 800000
 - frame-seconds threshold 5 threshold 800
- D. mib-retrieval
 - connection timeout 30
 - require-remote mode active
 - require-remote link-monitoring
 - require-remote mib-retrieval
 - action dying-gasp error-disable-interface
 - action critical-event error-disable-interface
 - action discovery-timeout error-disable-interface
 - action-session-down error-disable-interface
 - action-capabilities-conflict-error-disable-interface
 - action-wiring-conflict-error-disable-interface
 - action-remote-loopback-error-disable-interface
- E. ethernet oam profile Profile_1
 - snmp-server traps ethernet oam events
 - snmp-server community pulbic
 - snmp-server enable traps snmp authentication snmp-server manager
 - snmp-server ifindex persist

```
snmp ifmib ifalias long
snmp mib notification-log default
snmp mib notification-log global-size 600
```

Answer: A,D

NEW QUESTION # 178

Refer to the exhibit. Which type of DDoS attack will be mitigated by this configuration?

```
interface gigabitethernet 0/2
no ip directed-broadcast
```

- A. teardrop attack
- B. smurf attack
- C. SYN flood
- D. SIP INVITE flood attacks

Answer: B

NEW QUESTION # 179

• • • • •

You can learn from your Implementing and Operating Cisco Service Provider Network Core Technologies (350-501) practice test mistakes and overcome them before the actual Implementing and Operating Cisco Service Provider Network Core Technologies (350-501) exam. The software keeps track of the previous Implementing and Operating Cisco Service Provider Network Core Technologies (350-501) practice exam attempts and shows the changes of each attempt. You don't need to wait days or weeks to get your performance report. The software displays the result of the Cisco 350-501 Practice Test immediately, which is an excellent way to understand which area needs more attention.

350-501 New Test Materials: <https://www.vcetorrent.com/350-501-valid-vce-torrent.html>

- [illegible]

www.stes.tyc.edu.tw, www.stes.tyc.edu.tw, myportal.utt.edu.tw, myportal.utt.edu.tw, myportal.utt.edu.tw, myportal.utt.edu.tw,
myportal.utt.edu.tw, myportal.utt.edu.tw, myportal.utt.edu.tw, myportal.utt.edu.tw, myportal.utt.edu.tw, myportal.utt.edu.tw,
www.stes.tyc.edu.tw, Disposable vapes

BONUS!!! Download part of VCETorrent 350-501 dumps for free: https://drive.google.com/open?id=1o3jwr3IST094cIgy-u-ARdiffH_3ODtUq