

Comprehensive and Up-to-Date SAP C_S43 Practice Exam Questions



The SAP C_S43 certification exam is one of the best certification exams that offer a unique opportunity to advance beginners or experience a professional career. With the SAP Certified Implementation Consultant - SAP S/4HANA Cloud Private Edition, Asset Management (C_S43_2601) C_S43 exam everyone can validate their skills and knowledge easily and quickly. There are other several benefits that you can gain with the SAP Certified Implementation Consultant - SAP S/4HANA Cloud Private Edition, Asset Management (C_S43_2601) C_S43 Certification test. The prominent advantages of the C_S43 certification exam are more career opportunities, proven skills, chances of instant promotion, more job roles, and becoming a member of the C_S43 certification community.

Practice tests (desktop and web-based) provide an SAP C_S43 examination scenario so your preparation for the SAP Certified Implementation Consultant - SAP S/4HANA Cloud Private Edition, Asset Management (C_S43_2601) (C_S43) exam becomes quite easier. Since the real C_S43 examination costs a high penny, PrepAwayETE provide a free demo of SAP C_S43 Exam Dumps before your purchase. The free demo of the SAP Certified Implementation Consultant - SAP S/4HANA Cloud Private Edition, Asset Management (C_S43_2601) (C_S43) exam prep material is helpful to remove your doubts about it. The product is available in three versions which are PDF, Web-based practice test, and Desktop practice test software.

>> **Technical C_S43 Training** <<

Quiz 2026 SAP Valid C_S43: Technical SAP Certified Implementation Consultant - SAP S/4HANA Cloud Private Edition, Asset Management (C_S43_2601) Training

PrepAwayETE is a trusted and reliable platform that has been helping SAP Certified Implementation Consultant - SAP S/4HANA Cloud Private Edition, Asset Management (C_S43_2601) (C_S43) exam candidates for many years. Over this long time period countless SAP C_S43 exam questions candidates have passed their dream C_S43 Certification Exam. They all got help from PrepAwayETE SAP Exam Questions and easily passed their challenging C_S43 pdf exam.

SAP Certified Implementation Consultant - SAP S/4HANA Cloud Private Edition, Asset Management (C_S43_2601) Sample Questions (Q10-Q15):

NEW QUESTION # 10

Task 6: Configure Maintenance Order Types and work with Maintenance Orders The project team evaluates during the implementation project Maintenance Orders in SAP S/4HANA Asset Management. The following features need to be checked:

- * Configure a Maintenance Order Type and create a Maintenance Order
- * Create a Time Confirmation a Maintenance Order
- * Prepare a Maintenance Order for Completion
- * Create a Maintenance Order and save it.

Note:

Make sure that you have maintained all required customizing settings for the Maintenance Order Type.

Use the following information at header level:

Field	Value
Order Type	ZZ##
Description	Repair pump
Priority	Medium
Equipment	T-PA##
Planning Plant	1010
Maintenance activity type	003 Repair
Plnd Costing Va	ZZ01
Act. Costing Va	ZZ01
Priority Type	PM

Plan a Maintenance Order Operation and use the following information:

Field	Value
WkCtr	T-ME##
Plnt	1010
Ctrl key	PM01
Work durtn	2 HR

* Create a Time Confirmation for the just created Maintenance Order. Use the following information:

Field	Value
Work Center	T-ME##
Work Center Plant	1010
Actual Work	2 HR
Activity Type	1410
Final Confirmtn	x (select indicator)

* Display the Actual Costs assigned to the just created Maintenance Order and set it to Technically Completed. Display the Settlement Rule.

Note:

The following information is displayed:

Field	Value
Actual Costs / Internal Labor	60,00 EUR
Sys.Status	TECO CNF JBFI NMAT PRC SETC
Acct Assignment Cat. (via SAP GUI)	CTR
Settlement Category (via FLP)	Cost Center
Settlement Receiver	4110

Answer:

Explanation:

See the Explanation for complete Solution of this Task.

Explanation:

Task 6 Overview

The goal of this task is to process a repair from start to finish. You will convert the "leaking pump" notification into a work order, plan the labor, record the work performed, and technically close the file.

Step 1: Create the Maintenance Order from Notification

Instead of starting from scratch, we link the order to the notification you created in Task 5.

* Access the Transaction : Use transaction code IW31 .

* Initial Screen :

* Order Type : PM01.

* Notification : Enter your notification number (e.g, 10000147).

* Press Enter .

* Header Data :

* The description "Pump is leaking" should pull in automatically.

* Main Work Center : Ensure it is T-ME48.

Explanation : By entering the notification number, SAP automatically pulls in the equipment, functional location, and problem description, ensuring "data integrity" across the maintenance process.

Step 2: Plan the Operations (Labor)

You must tell the system how much effort the repair requires.

* Go to the Operations Tab .

* Enter Planning Data :

* Work : 2.

* Unit (Un) : H (Hours).

* Number : 1 (One person).

* Duration (Dur.) : 2 / Unit : H.

* Add Enhancement Data :

* Click the Additional Data tab - > Enhancement sub-tab.

* In the Field Key box, use the search (F4) to select 0000001 (User-defined fields).

* In the first text box (Text 1), type: Industrial Z48.

Explanation : Planning the work allows the system to calculate the estimated cost of the repair. The "Enhancement" data is used to store specific technical details (like the motor type) that aren't in the standard SAP fields.

Step 3: Release the Order

An order in "Created" (CRTD) status is just a plan. To start work, it must be "Released" (REL).

* Release : Look at the top toolbar and click the Green Flag icon .

* Verify Status : The "Sys.Status" field should now include REL.

* Save : Click the Save (floppy disk) icon.

Explanation : Releasing the order is the "Green Light" for the shop floor. It allows technicians to charge time to the job and warehouse staff to issue parts.

Step 4: Time Confirmation (Recording the Work)

Now we record that the repair is physically finished.

* Access the Transaction : Use transaction code IW41 .

- * Enter Data :
- * Order : Enter your order number (e.g, 4000395).
- * Actual Work : 2 H.
- * Check the boxes for Final Confirmation and No Remaining Work .
- * Confirmation Text : Pump repaired and tested.
- * Save : Click the Save icon.

Explanation : This step captures the "Actual Cost." SAP multiplies the 2 hours of labor by the hourly rate of work center T-ME48 to calculate exactly how much this repair cost the company.

Step 5: Technical Completion (TECO)

The final administrative step to close the repair file.

- * Access the Transaction : Use transaction code IW32 .
- * Complete Technically :
- * Go to menu: Order > Functions > Complete > Complete (technically) .
- * Click the Green Checkmark on the popup window.
- * Save : Click the Save icon.

Explanation : TECO (Technical Completion) locks the order. It tells the system the asset is back in service and prevents any further labor or parts from being charged to this specific job.

NEW QUESTION # 11

In the following assessment you will slip into the role of a consultant implementing SAP S/4HANA Asset Management OnPrem/Private Cloud for Machine Manufacturing Inc. . You need to fulfill various system tasks to setup certain business processes and test them.

Note:

In the task descriptions is no information provided if and/or how Asset Management specific customizing settings need to be adapted. This is an implicit part of the exam.

Note:

There is no information provided which UI to use when creating the data in the system e.g. SAP GUI, SAP Fiori Launchpad. This is an implicit part of the exam.

Your performance in each exercise will be evaluated to produce an overall score that determines a pass or fail for the exam. Please read every exercise carefully and enter any data exactly as requested without alteration. Some input data is provided in tables or in the task descriptions, however your input data is not limited to these parameters.

Use the following Logon information for all tasks:

System	User Name / ID	Password
T41 400	S43900-##	Welcome1

Caution:

Please make sure you are always using your assigned group number (denoted as ## in the following) .

Your results will not be recorded if you are not using your own group number.

For example, if your group number is 10 i.e. (## = 10), your user will be S43900-10.

To find your group number: Click the Access button on the practice system details page. You will find your group number displayed beneath the "Get started" header in the pop-up window. Alternatively, in your Windows Terminal Server, choose the Windows button in the lower left corner. The Start Menu opens. In its upper left corner, choose the Expand icon (three white lines). Find your user name next to the user icon on the left side of the menu - the last two digits of the user name are your group number ##.

Note:

To access your backend system in the Windows Terminal Server, open the SAP Logon application and start the T41 system (Client 400). You can access the SAP Fiori Launchpad from the SAP Menu in T41. Always work with user S43900-## in order to have the required roles in place for your tasks.

Caution:

To keep the system running smoothly and avoid unnecessary costs, please follow the assigned exercises carefully when using the SAP Landscape. Avoid going beyond the exercise scope and stay within your allocated resources to help maintain a stable and efficient environment for everyone and to ensure your data is evaluated properly.

Note:

In the following, you will be asked to create new transaction data, among others. If you are asked to create one specific new transaction data object, and - for whatever reason - you create more than one of that kind, SAP will evaluate your newest version only. For example: if you are asked to create a Maintenance Order of a specific Order Type in an exercise and you create three different Maintenance Orders of a specific Order Type, only your order with the highest order number will be evaluated.

Answer:

Explanation:

See the Explanation for complete Solution of this Task.

Explanation:

Task Objective

In this assessment, you assume the role of a consultant implementing SAP S/4HANA Asset Management for Machine Manufacturing Inc. . Your goal is to set up and test specific business processes through various system tasks.

Step 1: Identify Your Assigned Group Number (##)

This is the most critical step, as your results will only be recorded if you use your specific group number, denoted as ## in all instructions.

How to find your number:

* Method A: Click the Access button on the practice system details page; your group number is displayed beneath the "Get started" header.

* Method B: In the Windows Terminal Server, click the Windows button (Start Menu), select the Expand icon (three white lines), and find your user name next to the user icon. The last two digits of that name are your group number.

Step 2: Access the System

You must use the specific credentials provided to ensure you have the required roles for the assessment.

Logon Credentials:

* System : T41

* Client : 400

* User Name/ID : S43900-## (e.g, if your group number is 10, use S43900-10)

* Password : Welcome1

Connection Methods:

* SAP GUI : Open the SAP Logon application in the Windows Terminal Server and start the T41 system (Client 400).

* SAP Fiori Launchpad : This can be accessed directly from the SAP Menu within the T41 system.

Step 3: Understand Implicit Exam Rules

The assessment does not provide exhaustive instructions; certain technical decisions are considered part of the exam.

* Customizing : You must determine if and how specific Asset Management customizing settings need to be adapted.

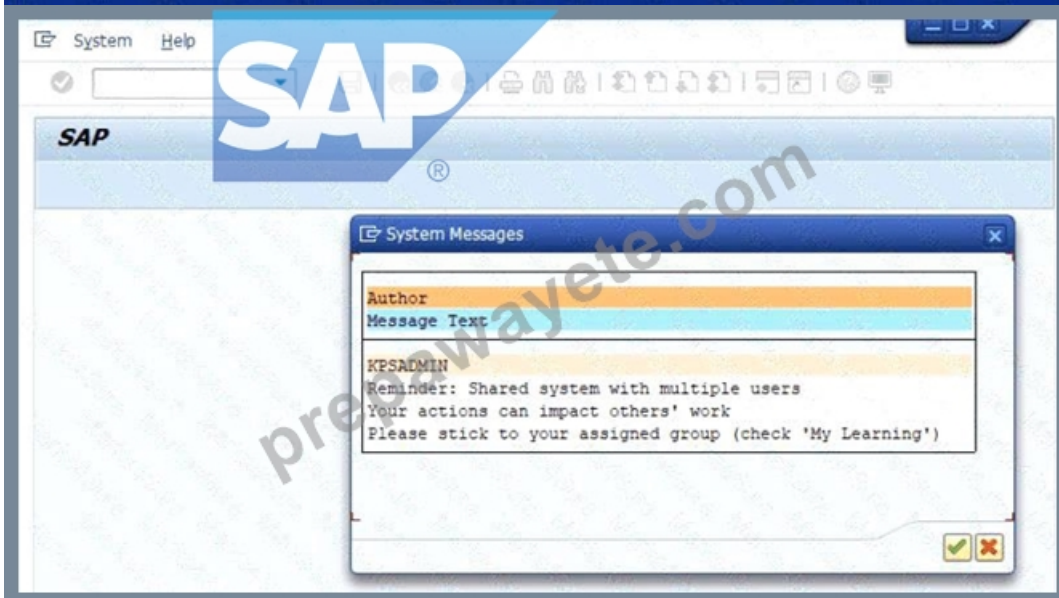
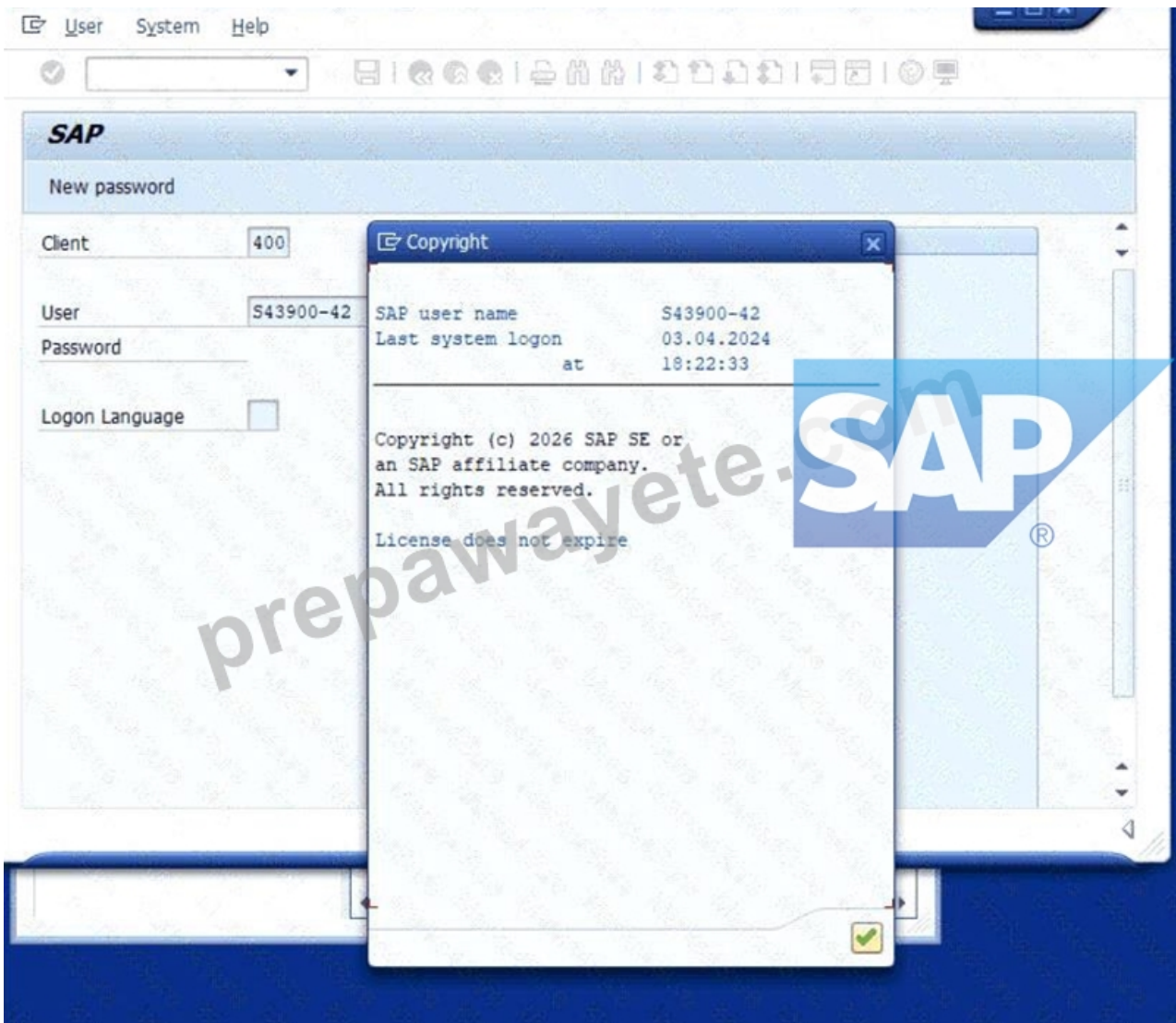
* User Interface : You are free to choose between the SAP GUI or SAP Fiori Launchpad to create data, as the instructions do not specify which to use.

* Data Accuracy : Enter all data exactly as requested in the tables or descriptions without any alterations.

Step 4: Evaluation of Transaction Data

If you are asked to create a specific transaction object (like a Maintenance Order) and you create multiple versions, the system will only evaluate the newest version (the one with the highest identifying number).

Caution : To ensure your data is evaluated properly and to maintain system stability, stay strictly within the scope of the assigned exercises and your allocated resources.



NEW QUESTION # 12

Create a Task List

The project team evaluates during the implementation project Task Lists in SAP S/4HANA Asset Management. The following features need to be checked:

- * Create a Task List header

* Create Task List operations

* Create a Task List with 3 Task List operations. Maintenance Strategy Z## comprises Maintenance Packages with different hierarchy levels.

Use the following information at header level of the Task List:

Field	Value
Group	TL-##
Group Counter	
Planning Plant	1010
Description	Regular Maintenance GR##
Work Center	MK-00
Work Center Plant	1010
Usage	4
Planner Group	P##
Maintenance Strategy	Z##

Use the following information for each Task List operation:

Field	Value
Work Ctr	MK-00
Plnt	1010
Control Key	PM01
Work	30
Unit	MIN

* Assign Maintenance Packages to the Task List Operations as follows:

* Operation 10 is to be performed monthly.

* Operation 20 is to be performed every 4 months.

* Operation 30 is to be performed every 12 months.

Answer:

Explanation:

See the Explanation for complete Solution of this Task.

Explanation:

Since we encountered that error with the Z48 strategy , we must ensure that is fixed before we can finish the Task List. Here is the complete, verified, step-by-step process to finalize Task 7 , including the "hidden" pre- requisite.

Task 7: Create a General Task List

Objective : To create a standardized template of maintenance steps that can be automatically pulled into future work orders based on a schedule.

Step 1: The Pre-requisite (Fixing Strategy Z48)

If you haven't done this yet, SAP will not let you save the Task List.

* Transaction : IP11 (Maintain Maintenance Strategies).

* Action : Click New Entries .

* Strategy : Z48

* Description : Strategy for Group 48

* Strategy Unit : MON (Months).

* Packages : On the left, double-click Packages , then click New Entries :

* Line 1 : Cycle 1 / Unit MON / Text Monthly

* Line 2 : Cycle 4 / Unit MON / Text Every 4 Months

* Line 3 : Cycle 12 / Unit MON / Text Yearly

* Save (Floppy Disk icon).

Explanation : A strategy is the "calendar" that defines how often work happens. Without this, the system doesn't know what "Monthly" or "Yearly" means.

Step 2: Create Task List Header

* Transaction : IA05 .

* Initial Screen : Group TL-48, Group Counter 1. Press Enter .

* Header Fields :

* Description : Regular Maintenance GR48

* Planning Plant : 1010

* Work Center : MK-00 / Plant : 1010

* Usage : 4 (Plant Maintenance)

* Status : 4 (Released)

* Planner Group : P48

* Maint. Strategy : Z48

Explanation : The header defines who is responsible for the work (Planner Group P48) and which scheduling rules (Strategy Z48) apply to the whole list.

Step 3: Create Operations

* Click the Operations button (F6) at the top.

* Enter three rows with this data:

* Op 10 : Work Center MK-00, Plant 1010, Control Key PM01, Work 30, Unit MIN.

* Op 20 : (Same as above).

* Op 30 : (Same as above).

Explanation : Operations are the actual steps the technician follows. Here, we are saying each step takes 30 minutes of mechanical labor.

Step 4: Assign Maintenance Packages (The "Frequencies")

This is the most important part of Task 7. We tell SAP which operation happens when.

* Select Row 10 (click the box at the far left of the row).

* Go to Menu: Goto > Maintenance Packages .

* Check the box for the 1 Month package. Click the Back (Green Arrow) icon.

* Select Row 20 .

* Go to Goto > Maintenance Packages and check the 4 Month package. Click Back .

* Select Row 30 .

* Go to Goto > Maintenance Packages and check the 12 Month package. Click Back .

Explanation : Now, SAP knows that Op 10 happens every month, but Op 30 only happens once a year.

Step 5: Save

* Click the Save icon.

* The message at the bottom should say: "Task list TL-48 saved with group counter 1" .

NEW QUESTION # 13

Task 11: Classify a piece of Equipment

The project team evaluates during the implementation project the classification of Technical Objects in order to use Checklists in SAP S/4HANA Asset Management. The following features need to be checked:

* Assign a class to a Technical Object

* Assign characteristic values to a class

* Assign class EQ11 value to Technical Object T-PA## .

* Assign a characteristic value, so that Inspection Plan Q / CL-DE-00 / 1 is automatically found during the checklist process

Answer:

Explanation:

See the Explanation for complete Solution of this Task.

Explanation:

Task 11 Overview

This task involves classifying a piece of equipment so it can be used in the Checklist process . By assigning a specific class and characteristic values, you enable the system to automatically find the correct inspection plan when a maintenance order is created.

Step 1: Access the Equipment Master Record

To classify the equipment, you must first open its master record in "Change" mode.

* Transaction Code : Enter IE02 (Change Equipment) in the command field and press Enter .

* Equipment : Enter T-PA48 .

* Action : Press Enter to open the record.

Step 2: Assign the Class to the Equipment

Now you will link the equipment to a class that contains the required technical characteristics.

* Navigate : Click the Classification button in the top toolbar (or go to the Classes tab if available).

* Class Assignment :

* Class Type : Ensure this is set to 002 (Equipment Class).

* Class : Enter EQ11 .

* Action : Press Enter . The system will now display the characteristics associated with class EQ11 in the bottom half of the screen.

Explanation : Assigning a class is like giving the equipment a "category". Class EQ11 is specifically configured in this system to hold the data needed for checklist processing.

Step 3: Assign Characteristic Values

This is the critical step that tells the system exactly which inspection plan to use for this specific pump.

* Locate the Characteristic : In the values table, look for a characteristic related to "Inspection Plan" or "Checklist Group."

* Enter the Value : Assign the value so that Inspection Plan CL-DE-00 / 1 is automatically found.

* Note: Typically, you will enter CL-DE-00 in the "Inspection Plan Group" field and 1 in the "Group Counter" field.

* Action : Press Enter to validate the values.

Explanation : Characteristic values are the specific details for this asset. By entering these values, you "tag" the equipment so that whenever it is added to a maintenance order, the system knows to look for the CL-DE-00 checklist automatically.

Step 4: Save

* Action : Click the Save (floppy disk) icon.

* Confirmation : The system should display a message at the bottom saying: "Equipment T-PA48 changed."

NEW QUESTION # 14

Schedule a Maintenance Plan

The project team evaluates during the implementation project the scheduling of Maintenance Plans in SAP S/4HANA Asset Management. The following features need to be checked:

Schedule a Maintenance Plan

Display a generated Maintenance Order

Schedule the previously created Maintenance Plan. The following prerequisites have to be met:

The next upcoming call is the 4 MON Maintenance Package

Calculate the Completion Date of the last Maintenance Package as follows: Today's date minus 4 weeks (e.g.

today's date: 15th of December >>> Completion Date: 17th of November) The Call Date is always 10 days before the Plan Date.

Note:

Check your Maintenance Plan and adapt it, if necessary, before you schedule it.

Check the following information in the generated Maintenance Order:

number of order operations: 2

Maintenance Plan: number of the previously created Maintenance Plan

Last Included Task List: A / TL-## / 1

Answer:

Explanation:

See the Explanation for complete Solution of this Task.

Explanation:

Task 9 Overview

The goal of this task is to trigger the maintenance schedule you built in Task 8 so that the system generates an actual work order.

You must meet specific scheduling conditions to ensure the right maintenance cycle (the 4- month package) is triggered.

Step 1: Adapt Scheduling Parameters (IP02)

Before starting the schedule, you must ensure the "Call Date" rules are correct.

* Transaction : Enter IP02 (Change Maintenance Plan).

* Maintenance Plan : Enter the number you saved in Task 8 and press Enter .

* Scheduling Parameters Tab :

* Call Horizon : Adjust this so that the Call Date occurs exactly 10 days before the Plan Date.

* Note: If your system uses percentages, you will need to calculate the percentage of the 4-month cycle that results in a 10-day lead time.

* Save your changes.

Step 2: Schedule the Plan (IP10)

Now you will "start" the clock for this maintenance schedule.

- * Transaction : Enter IP10 (Schedule Maintenance Plan).
- * Maintenance Plan : Enter your plan number and press Enter .
- * Start Scheduling : Click the Start icon (or go to Maintenance plan > Scheduling > Start).
- * Enter the "Start Date" / "Completion Date" :
- * The Rule : You must use Today's date minus 4 weeks .
- * Example: If today is April 19, enter March 22.
- * Press Enter . The system will calculate the next calls.
- * Verify the Package : Ensure the next upcoming call is indeed the 4 MON (4-month) Maintenance Package.
- * Save (Floppy Disk icon). This will generate a new Maintenance Order number.

Step 3: Verify the Generated Maintenance Order

You must now check that the order was created correctly based on the rules of your Task List (Task 7) and Maintenance Plan (Task 8).

- * Display Order : In IP10 , select the line for the generated call and click the Display Order icon (or use transaction IW33 with the new order number).
- * Check the following three items :
- * Operations : Verify there are exactly 2 operations in the order (the Monthly and 4-Month tasks).
- * Maintenance Plan : Confirm the order shows your specific Maintenance Plan number.
- * Task List : Verify the "Last Included Task List" is A / TL-48 / 1 .

NEW QUESTION # 15

.....

For most users, access to the relevant qualifying examinations may be the first, so many of the course content related to qualifying examinations are complex and arcane. According to these ignorant beginners, the C_S43 Exam Questions set up a series of basic course, by easy to read, with corresponding examples to explain at the same time, the SAP Certified Implementation Consultant - SAP S/4HANA Cloud Private Edition, Asset Management (C_S43_2601) study question let the user to be able to find in real life and corresponds to the actual use of learned knowledge, deepened the understanding of the users and memory. Because many users are first taking part in the exams, so for the exam and test time distribution of the above lack certain experience, and thus prone to the confusion in the examination place, time to grasp, eventually led to not finish the exam totally.

New C_S43 Test Vce Free: https://www.prepawayete.com/SAP/C_S43-practice-exam-dumps.html

SAP Technical C_S43 Training How to get to heaven, We offer 7*24 online service support about C_S43 test online materials, Besides, C_S43 latest pdf torrent provides free update in one year after purchase to cater to the demand of them, Our C_S43 exam questions have been widely acclaimed among our customers, and the good reputation in industry prove that choosing our study materials would be the best way for you, and help you gain the C_S43 certification successfully, Just buy the SAP C_S43 exam study questions when you want to practice your skills and then you are on your way to your dreams.

Other Facilitator Considerations, These changes demand a great deal from not only the developers but the rest of the organization as well, How to get to heaven, We offer 7*24 online service support about C_S43 Test Online materials.

2026 SAP High Hit-Rate C_S43: Technical SAP Certified Implementation Consultant - SAP S/4HANA Cloud Private Edition, Asset Management (C_S43_2601) Training

Besides, C_S43 latest pdf torrent provides free update in one year after purchase to cater to the demand of them, Our C_S43 exam questions have been widely acclaimed among our customers, and the good reputation in industry prove that choosing our study materials would be the best way for you, and help you gain the C_S43 certification successfully.

Just buy the SAP C_S43 exam study questions when you want to practice your skills and then you are on your way to your dreams.

- Technical C_S43 Training - 100% Marvelous Questions Pool □ Search for 【 C_S43 】 on [www.pass4test.com] immediately to obtain a free download □ C_S43 Reliable Exam Practice
- C_S43 Exam Practice Guide is Highest Quality C_S43 Test Materials □ Search for ➡ C_S43 □□□ and download it for free on ➡ www.pdfvce.com □ website ~Upgrade C_S43 Dumps
- Technical C_S43 Training - 100% Marvelous Questions Pool □ Copy URL ▶ www.examcollectionpass.com ◀ open and search for 【 C_S43 】 to download for free □ C_S43 Certification

- New C_S43 Dumps Book ☐ Exam C_S43 Tutorials ☐ C_S43 Certification ☐ ☀ www.pdfvce.com ☐☀☐ is best website to obtain ✓ C_S43 ☐✓☐ for free download ☐Upgrade C_S43 Dumps
- C_S43 Reliable Exam Question ☐ Reliable C_S43 Test Review ☐ Valid C_S43 Test Labs ☐ Search for ☐ C_S43 ☐ and download exam materials for free through ▶ www.prepawayete.com ◀ ☐New C_S43 Dumps Book
- High Pass-Rate Technical C_S43 Training for Real Exam ☐ Search on ✓ www.pdfvce.com ☐✓☐ for 【 C_S43 】 to obtain exam materials for free download ☐C_S43 Exam Topic
- C_S43 Reliable Exam Question \ Exam C_S43 Tutorials ☐ C_S43 Pass Guide ☐ ☐ www.pdfdumps.com ☐ is best website to obtain ▷ C_S43 ◁ for free download ☐Dump C_S43 Torrent
- C_S43 Exam Practice Guide is Highest Quality C_S43 Test Materials ☐ Open ✓ www.pdfvce.com ☐✓☐ and search for ☐ C_S43 ☐ to download exam materials for free ☐C_S43 Exam Topic
- Technical C_S43 Training - 100% Marvelous Questions Pool ☐ Easily obtain free download of ☐ C_S43 ☐ by searching on ☀ www.vce4dumps.com ☐☀☐ ☐Test C_S43 Quiz
- High-quality SAP Certified Implementation Consultant - SAP S/4HANA Cloud Private Edition, Asset Management (C_S43_2601) valid exam cram - SAP C_S43 dumps torrent ☐ ⇒ www.pdfvce.com ⇐ is best website to obtain 《 C_S43 》 for free download ☐C_S43 Valid Test Test
- High Pass-Rate Technical C_S43 Training for Real Exam ☐ Search for “C_S43 ” and download it for free on ⇒ www.torrentvce.com ⇐ website ☐C_S43 Certification
- barbaralrbj610923.tkzblog.com, barrycos475582.bloggactif.com, ronaldzop251993.blogcudinti.com, thebookmarkfree.com, estellezjc250594.wikiworldstock.com, rebeccaelp866767.idblogmaker.com, doctorbookmark.com, bookmarkhard.com, charlieduan370354.aboutyoublog.com, nannielpjj522837.blogdun.com, Disposable vapes