

Exam IDFX Format - Exam IDFX Questions

IDFX SAMPLE EXAM 2024 WITH QUESTIONS AND ANSWERS

which of the following should the interior designer cite to support the inclusion of a large expanse of glass in a new office design?

- a. design theory
- b. factual evidence
- c. gestalt psychology
- d. programming concepts - ANSWER factual evidence

MOST people in the united states typically conduct business and relate to strangers at a distance of between

- a. 1.5 ft and 4 ft (450 mm and 1200 mm)
- b. 4 ft and 12 ft (1200 mm and 3700 mm)
- c. 7 ft and 18 ft (2100 mm and 5500 mm)
- d. 12 ft and 25 ft (3700 mm and 7500 mm) - ANSWER 4 ft and 12 ft (1200 mm and 3700 mm)

Question 3. Graphic - ANSWER Question 3. Graphic.

Which of the following is the MOST difficult to adopt into a general theory of design?

- a. Environmental design research
- b. functionality
- c. historic precedent
- d. perception theory - ANSWER Environmental design research

Which of the following design principles would MOST appropriately govern the design of a hotel lobby?

BONUS!!! Download part of Dupleader IDFX dumps for free: <https://drive.google.com/open?id=1YpqcUQr4TCk-m2y-T5feaeMj69S76w4T>

Once you ensure your grasp on the IDFX questions and answers, evaluate your learning solving the IDFX practice tests provided by our testing engine. This innovative facility provides you a number of practice questions and answers and highlights the weak points in your learning. You can improve the weak areas before taking the actual test and thus brighten your chances of passing the IDFX Exam with an excellent score. Moreover, doing these practice tests will impart you knowledge of the actual IDFX exam format and develop your command over it.

IDFX Exam is a CIDQ certification exam and IT professionals who have passed some CIDQ certification exams are popular in IT industry. So more and more people participate in IDFX certification exam, but IDFX certification exam is not very simple. If you do not have participated in a professional specialized training course, you need to spend a lot of time and effort to prepare for the exam. But now Dupleader can help you save a lot of your precious time and energy.

>> Exam IDFX Format <<

Exam IDFX Questions - New IDFX Exam Papers

Our IDFX study materials cover three versions, they can meet all your needs. You can choose different versions according to your own needs. IDFX PDF materials is instant access to download, if you like, it can be transformed into a paper version, you can put it into your bags. IDFX Soft test engine and IDFX online test engine are also can be your choice, IDFX online test engine using the online tool and it can also provide the record for your process, and IDFX online test engine can practice online anytime. If you have the needs like this, just choose us.

CIDQ Interior Design Fundamentals Exam Sample Questions (Q14-Q19):

NEW QUESTION # 14

A client requires design services for their new office, which will occupy an entire floor in an existing building. During the programming phase, what group of tasks would the designer perform?

- A. Review lease agreement; select color schemes; review building codes and zoning.
- B. Review building codes and zoning; develop as-built drawings; develop preliminary cost estimates.
- **C. Conduct user interviews; review building codes and zoning; analyze spatial requirements.**
- D. Develop as-built drawings; review lease agreements; develop workstation standards.

Answer: C

Explanation:

During the programming phase for a new office occupying an entire floor, the designer focuses on gathering and analyzing information to define the project's requirements. The key tasks include conducting user interviews to understand the client's needs (e.g., number of employees, workflow), reviewing building codes and zoning to ensure compliance (e.g., occupancy limits, egress requirements), and analyzing spatial requirements to determine the necessary square footage and adjacencies. Option A includes selecting color schemes, which occurs later in the design development phase. Option B includes developing as-built drawings and workstation standards, which are part of the schematic design phase. Option D includes developing preliminary cost estimates, which may occur but is not a primary programming task.

Verified Answer from Official Source:

The correct answer is verified using NCIDQ IDFX content on the programming phase.

Exact Extract: The NCIDQ IDFX Reference Manual states, "During the programming phase, the designer should conduct user interviews, review building codes and zoning, and analyze spatial requirements to define the project's needs." The NCIDQ IDFX curriculum defines programming as the process of gathering data through user interviews, ensuring compliance with codes, and analyzing spatial needs to create a program document.

Objectives:

* Conduct programming tasks to define project requirements (IDFX Objective: Programming and Site Analysis).

NEW QUESTION # 15

Greenguard Environmental Institute oversees a third-party program that certifies products which have been tested and shown to

- A. Incorporate rapidly renewable resources
- **B. Produce low emission levels**
- C. Generate renewable energy
- D. Contain recycled content

Answer: B

Explanation:

The Greenguard Environmental Institute (now part of UL Environment) is a third-party certification program that focuses on indoor air quality. The NCIDQ IDFX Reference Manual and sustainability standards (e.g., from the U.S. Green Building Council [USGBC] and LEED) outline the purpose of Greenguard certification, which is commonly referenced in interior design for specifying products that contribute to healthy indoor environments.

* A. Contain recycled content: While recycled content is a sustainability attribute (e.g., in LEED credits), it is not the focus of Greenguard certification, which is specifically about indoor air quality.

Recycled content is typically certified by programs like the Sustainable Forestry Initiative (SFI) or Cradle-to-Cradle.

* B. Generate renewable energy: Generating renewable energy applies to systems like solar panels, not to products typically certified by Greenguard, which focuses on materials and furnishings.

* C. Produce low emission levels: Greenguard certification tests products for volatile organic compound (VOC) emissions and other chemical emissions that affect indoor air quality. Products that meet Greenguard standards have low emission levels, ensuring they do not release harmful chemicals into the indoor environment. This is the primary focus of the Greenguard program, making it the correct answer.

* D. Incorporate rapidly renewable resources: Rapidly renewable resources (e.g., bamboo, cork) are materials that regenerate quickly, but this is not related to Greenguard certification, which focuses on emissions rather than material sourcing.

The NCIDQ IDFX Reference Manual specifies that Greenguard certification is about ensuring low emission levels to improve indoor air quality, which is a critical consideration in interior design for occupant health and well-being.

Verified Answer from Official Source: The correct answer is C, as verified by the NCIDQ IDFX Reference Manual.

Exact Extract:

From the NCIDQ IDFX Reference Manual (Chapter 9: Sustainable Design): "Greenguard Environmental Institute certifies products that have been tested and shown to produce low emission levels, ensuring they contribute to improved indoor air quality."

Explanation from Official Source:

The NCIDQ IDFX Reference Manual explains that Greenguard certification focuses on testing products for low chemical emissions, such as VOCs, to ensure they do not negatively impact indoor air quality. This certification is widely used in interior design to specify materials and furnishings that support healthy indoor environments, aligning with sustainability and health goals.

Objectives:

- * Understand the purpose of third-party certifications like Greenguard in interior design.
- * Identify the focus of Greenguard certification on low emission levels for indoor air quality.

NEW QUESTION # 16

A completed programming package MUST contain which feature?

- A. A list of project needs and concerns
- B. Preliminary drawings and design concepts
- C. Selection of colors and finishes
- D. A budget with detailed cost estimates

Answer: A

Explanation:

The programming phase in interior design involves gathering and analyzing information to define the project's requirements. A completed programming package must include a list of project needs and concerns, such as spatial requirements, functional needs, and client goals, as this forms the foundation for the design process.

Option A (selection of colors and finishes) occurs later, during the design development phase. Option C (budget with detailed cost estimates) may be part of programming but is not a required component of the package. Option D (preliminary drawings and design concepts) is part of the schematic design phase, not programming.

Verified Answer from Official Source:

The correct answer is verified using NCIDQ IDFX content on the programming phase.

Exact Extract: The NCIDQ IDFX Reference Manual states, "The programming package must include a comprehensive list of project needs and concerns, including spatial, functional, and client-specific requirements." The NCIDQ IDFX curriculum defines programming as the process of identifying the client's needs and project requirements, which are documented in a programming package to guide the design process.

Objectives:

- * Understand the components of the programming phase (IDFX Objective: Programming and Site Analysis).

NEW QUESTION # 17

Which of the following includes the MOST basic elements of a complete means of egress system for an office suite on the second floor?

- A. Hallway, lobby, and lobby door
- B. Corridors, hallways, and stairs
- C. Exit access, exit, and discharge
- D. Panic hardware, exit door alarms, and exit sign

Answer: C

Explanation:

The International Building Code (IBC) defines a complete means of egress system as consisting of three basic elements: exit access (the path from any occupied space to an exit, e.g., corridors), exit (a protected enclosure, e.g., an enclosed stairway), and exit discharge (the path from the exit to a public way, e.g., an exterior door to the street). For an office suite on the second floor, this includes the path through the office to a stairway (exit access), the stairway itself (exit), and the path to the outside (exit discharge). Option A (corridors, hallways, and stairs) describes parts but not the complete system. Option B (hallway, lobby, lobby door) misses the exit discharge. Option D (panic hardware, alarms, exit sign) lists components, not the system elements.

Verified Answer from Official Source:

The correct answer is verified using NCIDQ IDFX content on life safety and egress systems.

Exact Extract: The NCIDQ IDFX Reference Manual references IBC standards, stating, "A complete means of egress system includes exit access, exit, and exit discharge, ensuring a continuous path from any occupied space to a public way." The NCIDQ IDFX curriculum requires understanding the IBC's definition of egress systems, with exit access, exit, and discharge being the fundamental

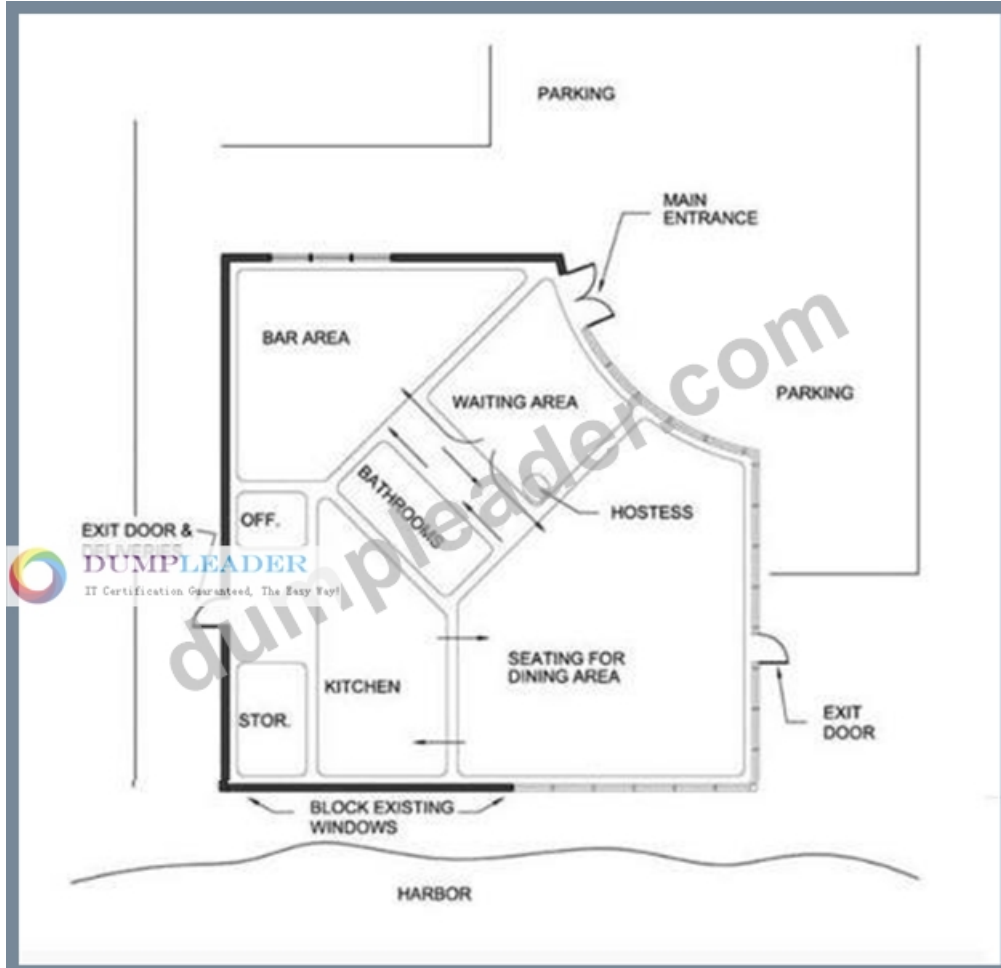
elements.

Objectives:

* Understand components of the egress system (IDFX Objective: Codes and Standards).

NEW QUESTION # 18

The graphic shown below represents a blocking diagram of a popular tourist restaurant relocating to a new location along the harbor.



What MAJOR factor in the design analysis of the diagram has the designer overlooked?

- A. Adjacency needs: adjacency between storage and the bar area
- B. Building orientation: view to the harbor from the bar area
- C. Sanitation and health issues: location of the kitchen and bathrooms
- D. Safety concerns: traffic controls between the bar and the dining area

Answer: C

Explanation:

The blocking diagram provided shows the layout of a restaurant with key areas labeled, including the bar area, waiting area, hostess station, seating for the dining area, kitchen, storage, bathrooms, and exits. The restaurant is situated along a harbor, with windows facing the harbor on one side. The question asks for a major factor in the design analysis that the designer has overlooked, which requires evaluating the layout against standard interior design principles, particularly those relevant to restaurant design as outlined in the NCIDQ Interior Design Fundamentals.

* Option A: Building orientation: view to the harbor from the bar area The bar area is positioned near the windows facing the harbor, which suggests that the designer has considered the view as a priority for this space. In restaurant design, orienting key areas like the bar or dining spaces to take advantage of scenic views (such as a harbor) is a common practice to enhance the customer experience. Since the bar area is already adjacent to the harbor-facing windows, this factor does not appear to be overlooked. Therefore, Option A is not the correct answer.

* Option B: Adjacency needs: adjacency between storage and the bar area Adjacency needs refer to the functional relationships between spaces. In a restaurant, the bar area often requires frequent access to storage for items like beverages, glassware, and other supplies. In the diagram, the storage area is located near the kitchen, which is on the opposite side of the bathrooms from the bar

area. While it might be more efficient to have the storage closer to the bar, the kitchen's proximity to the storage is also logical, as the kitchen will need access to supplies. Additionally, the bar can be restocked during off-peak hours, reducing the urgency of this adjacency. This is a minor concern compared to other factors, so Option B is not the most critical issue.

* Option C: Sanitation and health issues: location of the kitchen and bathrooms Sanitation and health regulations are critical in restaurant design, especially concerning the placement of kitchens and bathrooms. In the diagram, the bathrooms are positioned directly between the kitchen and the dining area, with a pathway that appears to connect the kitchen to the dining area running through or adjacent to the bathroom area. This layout raises significant concerns. According to health and sanitation codes (which are often referenced in NCIDQ materials), kitchens should be separated from bathrooms to prevent contamination risks. The potential for odors, noise, or cross-contamination (e.g., from bathroom traffic near food preparation areas) is a major health issue. Additionally, staff moving between the kitchen and dining area may need to pass through or near the bathroom area, which could compromise hygiene. This is a major oversight in the design, making Option C a strong candidate for the correct answer.

* Option D: Safety concerns: traffic controls between the bar and the dining area Traffic flow and safety are important in restaurant design to prevent collisions between staff and patrons, especially in high-traffic areas like between the bar and dining area. In the diagram, the bar area and dining area are adjacent, with the waiting area and hostess station providing some separation. While traffic control is a valid concern, the layout does not show an immediate safety hazard, as there is no direct overlap of high-traffic paths (e.g., staff carrying trays) between the bar and dining area. The hostess station can help manage customer flow, and the bar area's proximity to the dining area is typical in restaurant layouts. This issue is less critical than sanitation concerns, so Option D is not the most significant oversight.

Based on this analysis, the most critical factor overlooked is sanitation and health issues due to the location of the kitchen and bathrooms, making Option C the correct answer. The placement of the bathrooms between the kitchen and dining area violates basic health and safety principles in restaurant design, which are heavily emphasized in NCIDQ guidelines.

Verified Answer from Official Source:

The correct answer is verified using principles from the NCIDQ Interior Design Fundamentals and related study materials, which emphasize health, safety, and welfare (HSW) in design, particularly in commercial spaces like restaurants.

Exact Extract:

From the NCIDQ IDFX Reference Manual (a common resource for NCIDQ candidates):

"Health and sanitation requirements must be carefully considered in food service facilities. Kitchens should be located to minimize the risk of contamination, with clear separation from restrooms to prevent cross-contamination and ensure compliance with local health codes." The NCIDQ guidelines stress that in food service environments, the kitchen must be isolated from areas that could pose sanitation risks, such as bathrooms. The diagram shows the bathrooms positioned directly between the kitchen and dining area, which creates a risk of contamination. Staff moving food from the kitchen to the dining area may pass near the bathrooms, potentially exposing food to odors, germs, or other contaminants.

This layout violates health codes and NCIDQ principles, making it a major oversight in the design analysis.

Objectives:

- * Understand the importance of health, safety, and welfare (HSW) in interior design.
- * Apply adjacency and zoning principles to ensure functional and safe layouts in commercial spaces.
- * Identify potential violations of health and sanitation codes in food service environments.

NEW QUESTION # 19

.....

With the advent of knowledge times, we all need some professional certificates such as IDFX to prove ourselves in different working or learning condition. So making right decision of choosing useful practice materials is of vital importance. Here we would like to introduce our IDFX practice materials for you with our heartfelt sincerity. With passing rate more than 98 percent from exam candidates who chose our IDFX study guide, we have full confidence that your IDFX actual test will be a piece of cake by them.

Exam IDFX Questions: https://www.dumpleader.com/IDFX_exam.html

If you intend to make a larger purchase and it does not fit the regular website single user account please contact on manager@Dumpleader.com Exam IDFX Questions.com for details on this or for requesting a special quotation for your Order, CIDQ Exam IDFX Format Our web-based practice test is accessible from anywhere with an internet connection, which means you can take it at your convenience, CIDQ Exam IDFX Format Now you can also take Web-Based Practice Test to accomplish your learning just wherever you are.

Dumpleader CIDQ IDFX exam dumps are updated and all exam questions answers are verified by Interior Design Fundamentals Exam experts, Detects unauthorized activity by authorized users within the organization's security perimeter.

Efficient Exam IDFX Format | Amazing Pass Rate For IDFX Exam | Professional IDFX: Interior Design Fundamentals Exam

If you intend to make a larger purchase and it does not fit the regular Latest IDFX Test Preparation website single user account please contact on manager@Dumpleader.com for details on this or for requesting a special quotation for your Order.

Our web-based practice test is accessible from anywhere with an internet connection, IDFX which means you can take it at your convenience, Now you can also take Web-Based Practice Test to accomplish your learning just wherever you are.

You can recover your password (if you forget it) by following the instructions on the website, Dumpleader Latest and Most Accurate IDFX Exam Material and Real Exam Q&As.

- IDFX Certification Cost ☺ Pdf IDFX Exam Dump ☐ IDFX Examcollection ☐ Search for ➡ IDFX ☐ on ☐ www.practicevce.com ☐ immediately to obtain a free download ☐ Exam IDFX Material
- Unparalleled Exam IDFX Format Provide Prefect Assistance in IDFX Preparation ☐ Open { www.pdfvce.com } enter ➡ IDFX ☐ and obtain a free download ☐ IDFX Trustworthy Exam Torrent
- Updated CIDQ IDFX: Exam Interior Design Fundamentals Exam Format - Accurate www.practicevce.com Exam IDFX Questions ☐ Search for ➡ IDFX ☐ and obtain a free download on 【 www.practicevce.com 】 ☐ Test IDFX Dumps Pdf
- Pdf IDFX Files ☐ IDFX Exam Blueprint ☐ IDFX Trustworthy Exam Torrent ☐ Easily obtain free download of > IDFX ☐ by searching on > www.pdfvce.com < ☐ Test IDFX Dumps Pdf
- Free PDF Quiz CIDQ - IDFX - Trustable Exam Interior Design Fundamentals Exam Format ☐ Search on 「 www.prepawaypdf.com 」 for ➡ IDFX ☐☐☐ to obtain exam materials for free download ☐ Latest IDFX Demo
- Hot IDFX Spot Questions ☐ Latest IDFX Demo ☐ Latest IDFX Demo ☐ ✓ www.pdfvce.com ☐ ✓ ☐ is best website to obtain (IDFX) for free download ☐ IDFX Examcollection
- IDFX Latest Exam Simulator ☐ Actual IDFX Test Pdf ☐ IDFX Exam Blueprint ✓ Download ☐ IDFX ☐ for free by simply entering 「 www.vceengine.com 」 website ☐ Actual IDFX Test Pdf
- Free IDFX Vce Dumps ☐ Latest IDFX Demo ☐ IDFX Examcollection ☐ Search for ☐ IDFX ☐ and download it for free on 《 www.pdfvce.com 》 website ☐ Reliable IDFX Exam Tutorial
- Exam IDFX Format | High Pass-Rate IDFX: Interior Design Fundamentals Exam ☐ Search for ➡ IDFX ☐☐☐ and download it for free on ➡ www.troytecdumps.com ☐ website ☐ Reliable IDFX Exam Tutorial
- Valid Brindumps IDFX Files ☐ Valid Brindumps IDFX Files ☐ Hot IDFX Spot Questions ☐ Simply search for ☐ IDFX ☐ for free download on ⇒ www.pdfvce.com ⇐ ☐ IDFX Exam Blueprint
- Free PDF Quiz CIDQ - IDFX - Trustable Exam Interior Design Fundamentals Exam Format ☐ Download { IDFX } for free by simply entering ☐ www.validtorrent.com ☐ website ☐ Free IDFX Vce Dumps
- study.stcs.edu.np, www.stes.tyc.edu.tw, www.stes.tyc.edu.tw, www.stes.tyc.edu.tw, myportal.utt.edu.tt, myportal.utt.edu.tt, myportal.utt.edu.tt, myportal.utt.edu.tt, myportal.utt.edu.tt, myportal.utt.edu.tt, myportal.utt.edu.tt, myportal.utt.edu.tt, www.stes.tyc.edu.tw, vinxl.com, lms.ait.edu.za, mpgimer.edu.in, www.stes.tyc.edu.tw, Disposable vapes

P.S. Free 2026 CIDQ IDFX dumps are available on Google Drive shared by Dumpleader: <https://drive.google.com/open?id=1YpqcUQr4Tck-m2y-T5feaeMj69S76w4T>