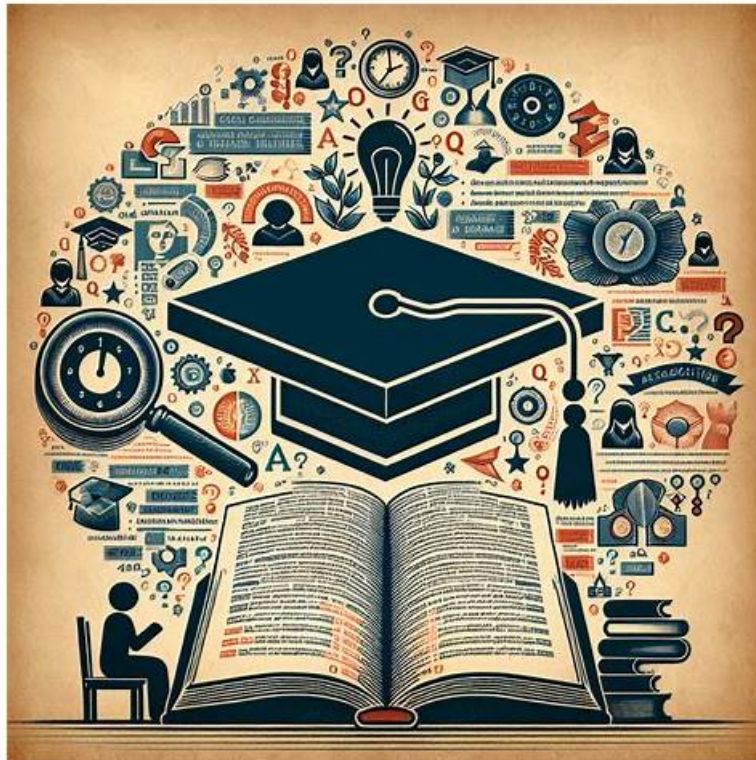


# 2026 Authoritative 101-500–100% Free Study Tool | 101-500 Updated Demo



BTW, DOWNLOAD part of IteXamguide 101-500 dumps from Cloud Storage: [https://drive.google.com/open?id=1GD7RP2A\\_Ec3uivfW7jQpzCYirrwimfd](https://drive.google.com/open?id=1GD7RP2A_Ec3uivfW7jQpzCYirrwimfd)

If you want to give up your certificate exams as you fail 101-500 exam or feel it too difficult, please think about its advantages after you obtain a Lpi certification. Many special positions require employees to have a qualification. If you think it is very difficult for you to pass exams, our 101-500 Valid Exam Cram PDF can help you to achieve your goal. Our exam materials are collected from the real test center and edited by our experienced experts. If you need 100% passing rate, our 101-500 valid exam cram PDF can help you.

## How to Prepare For LPIC-1 Linux Administrator , 101-500 exam

### Preparation Guide for LPIC-1 Linux Administrator , 101-500 exam

#### Introduction

LPIC-1 is the first certification in LPI's multi-level Linux professional certification program. The LPIC-1 will validate the candidate's ability to perform maintenance tasks on the command line, install and configure a computer running Linux and configure basic networking.

The LPIC-1 is designed to reflect current research and validate a candidate's proficiency in real world system administration. The objectives are tied to real-world job skills, which we determine through job task analysis surveying during exam development.

In this guide, we will cover the **101-500 exam** topics, LPIC-1 Linux Administrator , 101-500 Certified professional salary and all aspects of the LPIC-1 Linux Administrator , 101-500 Certification.

Lpi 101-500 (LPIC-1 Exam 101, Part 1 of 2, version 5.0) Certification Exam is designed to test the knowledge and skills of IT professionals in the Linux operating system. 101-500 exam is the first part of a two-part certification process that leads to the LPIC-1 certification. The LPIC-1 certification is a widely recognized credential that validates proficiency in Linux administration and provides a solid foundation for further Linux-related certifications.

Lpi 101-500 exam is designed to test the basic knowledge and skills of a Linux administrator. It is the first part of the LPIC-1

certification process, which is an industry-recognized certification for Linux professionals. 101-500 exam covers a wide range of topics, including system architecture, Linux installation and package management, GNU and Unix commands, devices, and file systems.

>> 101-500 Study Tool <<

## 101-500 Updated Demo | 101-500 Latest Exam Format

The whole payment process on our 101-500 exam braindumps only lasts a few seconds as long as there has money in your credit card. Then our system will soon deal with your orders according to the sequence of payment. Usually, you will receive the 101-500 Study Materials no more than five minutes. Then you can begin your new learning journey of our 101-500 preparation questions. All in all, our payment system and delivery system are highly efficient.

### Lpi LPIC-1 Exam 101, Part 1 of 2, version 5.0 Sample Questions (Q257-Q262):

#### NEW QUESTION # 257

Which standardized TCP port is used by HTTPS services?

- A. 0
- B. 1
- C. 2
- D. 3
- E. 4

**Answer: C**

#### NEW QUESTION # 258

When in Normal mode in vi, which character can be used to begin a reverse search of the text?

- A. F
- B. /
- C. ?
- D. r

**Answer: C**

Explanation:

In vi, the ? character can be used to begin a reverse search of the text. This means that the search will start from the current cursor position and move backwards towards the beginning of the file. The search pattern can be any regular expression that matches the desired text. To repeat the search, the user can press n for the previous match or N for the next match. The / character can be used to begin a forward search of the text, which means that the search will start from the current cursor position and move forwards towards the end of the file. The F and r characters are not used for searching, but for other commands in vi. The F command is used to move the cursor to a previous occurrence of a specified character in the current line. The r command is used to replace the character under the cursor with another character. References:

\* LPI 101-500 Exam Objectives, Topic 103.8, Weight 4

\* LPI Learning Materials, Chapter 3.8, Advanced Scripting

\* Web Search Results,

#### NEW QUESTION # 259

During a system boot cycle, what is the program that is run after the BIOS completes its tasks?

- A. The bootloader
- B. The init program
- C. The kernel
- D. The inetd program

**Answer: A**

**NEW QUESTION # 260**

To what environment variable will you assign or append a value if you need to tell the dynamic linker to look in a build directory for some of a program's shared libraries?

- A. LD\_RUN\_PATH
- B. LD\_LOAD\_PATH
- **C. LD\_LIBRARY\_PATH**
- D. LD\_SHARE\_PATH
- E. LD\_LIB\_PATH

**Answer: C**

Explanation:

Explanation

The environment variable LD\_LIBRARY\_PATH is used to tell the dynamic linker to look in a specific directory for some of a program's shared libraries. It is a colon-separated list of directories that are searched by the dynamic linker when looking for a shared library to load. The directories are searched in the order they are mentioned in. For example, if we have a program that depends on a shared library libfoo.so that is located in /home/user/build/lib, we can run the program with:

```
LD_LIBRARY_PATH=/home/user/build/lib ./program
```

This will instruct the dynamic linker to search for libfoo.so in /home/user/build/lib before the default directories. The environment variable LD\_LIBRARY\_PATH can also be appended to an existing value with the += operator, for example:

```
LD_LIBRARY_PATH+=/home/user/build/lib
```

This will add /home/user/build/lib to the end of the LD\_LIBRARY\_PATH list. The other options are not valid environment variables for the dynamic linker. LD\_LOAD\_PATH, LD\_LIB\_PATH, and LD\_SHARE\_PATH are not recognized by the dynamic linker.

LD\_RUN\_PATH is a linker option that can be used to embed a librarysearch path in the executable at link time, but it is not an environment variable that can be set or modified at run time. References:

\* LPI Exam 101 Detailed Objectives, section 1.101.3

\* ld-linux(8) - Linux manual page

\* Setting the dynamic linker with an environment variable - narkive

**NEW QUESTION # 261**

Which of the following commands will produce the following output?

□

- A. jobs
- B. netstat
- C. proclist
- **D. ps**

**Answer: D**

**NEW QUESTION # 262**

.....

Our company have the higher class operation system than other companies, so we can assure you that you can start to prepare for the 101-500 exam with our study materials in the shortest time. In addition, if you decide to buy the 101-500 study materials from our company, we can make sure that your benefits will far exceed the costs of you. The rate of return will be very obvious for you. We sincerely reassure all people on the 101-500 Study Materials from our company and enjoy the benefits that our study materials bring.

**101-500 Updated Demo:** [https://www.itexamguide.com/101-500\\_braindumps.html](https://www.itexamguide.com/101-500_braindumps.html)

- New 101-500 Test Pass4sure □ 101-500 Reliable Exam Braindumps □ Test 101-500 Questions Vce □ The page for free download of > 101-500 < on ( [www.troytecdumps.com](http://www.troytecdumps.com) ) will open immediately □ 101-500 Test Engine
- Test 101-500 Dumps □ Interactive 101-500 Questions □ Valid 101-500 Test Camp □ Search on ➡ [www.pdfvce.com](http://www.pdfvce.com) □□□ for 「 101-500 」 to obtain exam materials for free download □ Valid Study 101-500 Questions

