

# NSE5\_FSW\_AD-7.6 Test Dates & Practice

## NSE5\_FSW\_AD-7.6 Exam Pdf

| SAT® TEST DATES & DEADLINES 2025–2026 |                       |                    |
|---------------------------------------|-----------------------|--------------------|
| SAT Test Date                         | Registration Deadline | Late Reg. Deadline |
| August 23, 2025                       | August 8, 2025        | August 12, 2025    |
| September 13, 2025                    | August 29, 2025       | September 2, 2025  |
| October 4, 2025                       | September 19, 2025    | September 23, 2025 |
| November 8, 2025                      | October 24, 2025      | October 28, 2025   |
| December 6, 2025                      | November 21, 2025     | November 25, 2025  |
| March 14, 2026                        | February 27, 2026     | March 3, 2026      |
| May 2, 2026                           | April 17, 2026        | April 21, 2026     |

SAT® is a trademark registered and/or owned by the College Board, which was not involved in the production of, and does not endorse, this product.

Prep4sures are supposed to help you pass the exam smoothly. Don't worry about channels to the best NSE5\_FSW\_AD-7.6 study materials because we are the exactly best vendor in this field for more than ten years. And so many exam candidates admire our generosity of the NSE5\_FSW\_AD-7.6 Practice Questions offering help for them. Up to now, no one has ever challenged our leading position of this area. With our NSE5\_FSW\_AD-7.6 training guide, you will be doomed to pass the exam successfully.

Our NSE5\_FSW\_AD-7.6 learning test was a high quality product revised by hundreds of experts according to the changes in the syllabus and the latest developments in theory and practice, based on historical questions and industry trends. Whether you are a student or an office worker, whether you are a rookie or an experienced veteran with years of experience, NSE5\_FSW\_AD-7.6 Guide Torrent will be your best choice. The main advantages of our NSE5\_FSW\_AD-7.6 study materials is high pass rate of more than 98%, which will be enough for you to pass the NSE5\_FSW\_AD-7.6 exam.

>> NSE5\_FSW\_AD-7.6 Test Dates <<

## Practice NSE5\_FSW\_AD-7.6 Exam Pdf | Reliable NSE5\_FSW\_AD-7.6 Braindumps Book

Keeping in view different preparation styles of Fortinet NSE5\_FSW\_AD-7.6 test applicant Prep4sures has designed three easy-to-use formats for its product. Each format has a pool of Fortinet NSE 5 - FortiSwitch 7.6 Administrator (NSE5\_FSW\_AD-7.6) actual questions which have been compiled under the guidance of thousands of professionals worldwide. Questions in this product will appear in the Fortinet NSE5\_FSW\_AD-7.6 final test.

## Fortinet NSE 5 - FortiSwitch 7.6 Administrator Sample Questions (Q69-Q74):

### NEW QUESTION # 69

Which statement about the configuration of VLANs on a managed FortiSwitch port is true?

- A. Allowed VLANs expand the collision domain to the port.
- B. FortiSwitch VLAN interfaces are created only when FortiSwitch is managed by Forti-Gate.
- C. Untagged VLANs must be part of the allowed VLANs: ingress and egress.
- **D. The native VLAN is implicitly part of the allowed VLAN on the port.**

**Answer: D**

Explanation:

The native VLAN is implicitly part of the allowed VLAN on the port (C): On a managed FortiSwitch port, the native VLAN, which is the VLAN assigned to untagged traffic, is implicitly included in the list of allowed VLANs. This means it does not need to be explicitly specified when configuring VLAN settings on the port.

This configuration simplifies VLAN management and ensures that untagged traffic is handled correctly without additional configuration steps.

### NEW QUESTION # 70

Which statement best describes a benefit of using MAC, IP address, or protocol-based VLAN assignments on FortiSwitch?  
(Choose one answer)

- A. It offers dynamic segmentation benefits similar to 802.1X authentication.2
- B. It requires devices to authenticate through a RADIUS server before VLAN tagging.
- C. It assigns ports to VLANs regardless of device type or traffic.
- D. It disables 802.1X authentication while preserving user access control.1

**Answer: A**

Explanation:

According to the FortiSwitchOS 7.6 Administration Guide and the FortiSwitch 7.6 Study Guide, MAC-based, IP-based, and protocol-based VLAN assignments are methods of dynamic VLAN assignment. These features allow the switch to categorize incoming traffic and assign it to a specific VLAN based on the packet's attributes rather than just the physical port it is connected to.3 The primary benefit of these methods is that they offer dynamic segmentation benefits similar to 802.1X authentication (Option D). In a modern network, devices with different security requirements (such as IoT devices, printers, and workstations) often connect to the same physical switch ports. 802.1X is the "gold standard" for dynamic segmentation but requires a supplicant on the client device.4 For devices that do not support 802.1X, MAC or protocol-based assignments provide a similar result: they ensure the device is automatically placed into its designated secure segment (VLAN) the moment it is identified by the switch.

\* MAC-based: Assigns a VLAN based on the source MAC address.

\* IP-based: Assigns a VLAN based on the source IP address or subnet.

\* Protocol-based: Assigns a VLAN based on the Ethernet type (e.g., IPv4, IPv6, or AppleTalk).

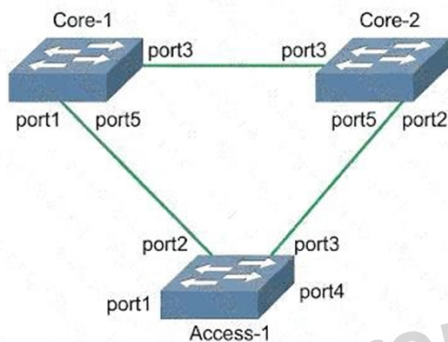
Option A is incorrect because these features complement rather than "disable" 802.1X. Option B is incorrect because these specific assignment types can be configured locally on the switch without a RADIUS server.

Option C is the opposite of how these features work, as they explicitly look at the device type or traffic to make an assignment.

### NEW QUESTION # 71

Refer to the exhibits.

#### Network Topology



#### Diagnose output

```
Core-2 # diagnose stp instance list
MST Instance Information, primary-Channel:
Instance ID 0 (CST)
Config Priority 32768
Bridge MAC 02090f000702
Bridge MAC 02090f000702, MDS Digest ac36177f50283cd4b83021d8ab26de62
Root MAC 02090f000701, Priority 4096, Path Cost 0, Remaining Hops 19
Regional Root MAC 02090f000701, Priority 4096, Path Cost 20000, Root Port port3
Regional Root MAC 02090f000701, Priority 4096, Path Cost 20000, Root Port port3
Active Times Forward Time 15, Max Age 20, Remaining Hops 19
TCN Events Triggered 4 (0d 0h 27m 23s ago), Received 13 (0d 0h 27m 21s ago)
```

| Port     | Speed   | Cost  | Priority | Role     | State  | HelloTime | Flags  |
|----------|---------|-------|----------|----------|--------|-----------|--------|
| port1    | 500/s   | 0     | 32768    | Header   | Stated | 10        | NS,    |
| port2    | 800/s   | 0     | 32768    | Header   | Stated | 20        | U,DSS  |
| port3    | 800/s   | 0     | 32768    | Primary  | Stated | 10        | NS,    |
| port4    | 800/s   | 0     | 32768    | Primary  | Stated | 10        | NS,    |
| port5    | 400/s   | 0     | 4096     | Primary  | Stated | 10        | NS,    |
| port6    | 200/s   | 0     | 4096     | Primary  | Stated | 10        | NS,    |
| port7    | 10000/s | 20000 | 20000    | Priority | Stated | 10        | NS,    |
| port8    | 40000/s | 20000 | 20000    | Primary  | Stated | 10        | NS,N   |
| port9    | 500/s   | 0     | 4096     | Primary  | Stated | 20        | NS,FS  |
| port10   | 800/s   | 0     | 32768    | Primary  | Stated | 20        | NS,F   |
| port11   | 800/s   | 0     | 32768    | Primary  | Stated | 20        | NS,F   |
| port12   | 800/s   | 0     | 32768    | Primary  | Stated | 20        | NS,F   |
| port13   | 800/s   | 0     | 32768    | Primary  | Stated | 10        | NS,F   |
| port14   | 800/s   | 0     | 32768    | Primary  | Stated | 20        | NS,F   |
| port15   | 800/s   | 0     | 32768    | Primary  | Stated | 10        | NS,F   |
| port16   | 800/s   | 0     | 32768    | Primary  | Stated | 10        | NS,F   |
| port17   | 800/s   | 0     | 32768    | Primary  | Stated | 10        | NS,F   |
| port18   | 10000/s | 20000 | 20000    | Rootie   | Stated | 10        | NS,PS  |
| port19   | 800/s   | 0     | 32768    | Primary  | Stated | 20        | NS,F   |
| port20   | 800/s   | 0     | 32768    | Primary  | Stated | 20        | NS,F   |
| port21   | 800/s   | 0     | 32768    | Primary  | Stated | 20        | NS,F   |
| port22   | 800/s   | 0     | 32768    | Rootie   | Stated | 10        | NS,F   |
| port23   | 800/s   | 0     | 32768    | Rootie   | Stated | 10        | NS,DSS |
| port24   | 800/s   | 0     | 32768    | Primary  | Stated | 20        | NS,F   |
| internal |         | 32768 | 0        | Internal | State  | 1d        |        |
| internal |         | 32768 | 0        | Internal | State  | 1d        |        |

Flags: NS = Flag-debust, RI = Unlue by networks, E = Mbit status  
VE = debustated, F = Maatle Forward flags

Three FortiSwitch devices in standalone mode are interconnected. The CLI command `diagnose stp instance list` is executed on Core-2. Based on the output shown in the exhibit, what can you conclude about Core-2?

(Choose one answer)

- A. Core-2 is the designated bridge for all VLANs.
- B. Core-2 has received Bridge Protocol Data Unit (BPDU) from the root bridge.
- C. Core-2 is blocking all ports in the Spanning Tree Protocol (STP) topology.

- D. Core-2 provides an alternate path to the root bridge.

**Answer: B**

Explanation:

According to the FortiSwitchOS 7.6 Administration Guide and the FortiSwitch 7.6 Study Guide, the output of the `diagnose stp instance list` command provides critical information about the Spanning Tree Protocol (STP) state of a switch within a given instance. In the provided exhibit, the output for Instance ID 0 (CST) on Core-2 shows several key indicators of its role and connectivity within the STP topology.

First, the output explicitly identifies a Root bridge with MAC address 02090f000701 and a priority of 4096.

Core-2 itself has a MAC address of 02090f000702 and a priority of 32768. Because Core-2 knows the MAC address and priority of the Root bridge, it must have received this information via Bridge Protocol Data Units (BPDUs). Furthermore, the port table shows that port 3 on Core-2 has been assigned the role of ROOT and is in the FORWARDING state. In STP/RSTP, a Root Port is the port on a non-root switch that has the lowest path cost to the root bridge. To elect a Root Port and maintain its state, the switch must continuously receive BPDUs from the root bridge (or a bridge closer to the root) on that port.

Option B is incorrect because Core-2 has a Root Port, which is only present on non-root bridges. Option C is incorrect because ports 1, 2, 4, 5, and the internal port are all in the FORWARDING state. Option D is incorrect as the output does not show any ports in an ALTERNATE role; all active ports are either ROOT or DESIGNATED. Therefore, the most accurate conclusion is that Core-2 has successfully received BPDUs to identify the root and determine its own port roles.

### NEW QUESTION # 72

Which two statements about the FortiLink authorization process are true? (Choose two.)

- A. The administrator must manually pre-authorize FortiGate on FortiSwitch by adding the FortiGate serial number.
- B. FortiSwitch requires a reboot to complete the authorization process.
- C. FortiLink authorization sets the FortiSwitch management mode to FortiLink.
- D. A FortiLink frame is sent by FortiGate to FortiSwitch to complete the authorization.

**Answer: C,D**

Explanation:

The FortiLink authorization process is an integral part of setting up FortiSwitch to be managed by FortiGate.

The correct statements regarding the FortiLink authorization process are:

C). A FortiLink frame is sent by FortiGate to FortiSwitch to complete the authorization. This is a part of the FortiLink protocol, where FortiGate communicates with the connected FortiSwitch to establish management and control. This frame initiates the configuration and management process, allowing FortiGate to effectively control the switch.

D). FortiLink authorization sets the FortiSwitch management mode to FortiLink. Once authorized, the management mode of FortiSwitch is set to FortiLink, indicating that it is being managed via a FortiLink connection from a FortiGate appliance. This changes the operational mode of the switch to be under the control of the FortiGate for centralized management and policy application.

References:

Further details on the FortiLink setup and authorization process can be accessed through the FortiGate configuration guides available on the Fortinet Documentation site.

### NEW QUESTION # 73

You are configuring VLANs on a FortiSwitch device managed by FortiGate. Which two statements accurately describe VLAN assignment requirements and behavior on FortiSwitch ports? (Choose two answers)

- A. VLAN assignments must be configured directly on the FortiSwitch.
- B. Untagged VLAN applies to egress traffic only.
- C. Untagged defines the list of VLANs that are allowed on the port for both ingress and egress traffic.
- D. You can assign only one native VLAN on a port.

**Answer: B,D**

Explanation:

According to the FortiSwitchOS 7.6 Administration Guide and the FortiSwitch 7.6 Study Guide, understanding how VLANs are processed on a switch port is fundamental to network segmentation. A FortiSwitch port behaves differently depending on whether traffic is entering (ingress) or leaving (egress) the interface.

First, you can assign only one native VLAN on a port (Option C). The Native VLAN (often called the PVID or Port VLAN ID) is the default internal ID assigned to any untagged frames arriving at the port. In a managed environment, this is typically set via the FortiGate's switch controller. By design, a single physical interface can only belong to one primary broadcast domain for untagged ingress traffic to ensure there is no ambiguity in the switch's internal forwarding logic.

Second, the untagged VLAN setting applies to egress traffic only (Option B). While the "Allowed VLANs" list defines which tagged traffic can pass through the port, the "Untagged VLANs" list specifies which of those VLAN tags should be removed by the switch before the frame is transmitted out of the physical port.

This is crucial for connecting devices that do not support 802.1Q tagging, such as standard PCs or printers.

Regarding the incorrect options: Option A is incorrect because the "Untagged" list does not define ingress rules; ingress is governed by the Native VLAN for untagged packets and the Allowed list for tagged packets.

Option D is incorrect because, in a managed FortiLink environment, all VLAN assignments should be performed through the FortiGate's Switch Controller to ensure centralized management and consistency.

## NEW QUESTION # 74

.....

We all know the effective diligence is in direct proportion to outcome, so by years of diligent work, our experts have collected the frequent-tested knowledge into our NSE5\_FSW\_AD-7.6 practice materials for your reference. So our NSE5\_FSW\_AD-7.6 training materials are triumph of their endeavor. By resorting to our NSE5\_FSW\_AD-7.6 practice materials, we can absolutely reap more than you have imagined before. We have clear data collected from customers who chose our NSE5\_FSW\_AD-7.6 actual tests, the passing rate is 98% percent. So your chance of getting success will be increased greatly by our NSE5\_FSW\_AD-7.6 materials.

**Practice NSE5\_FSW\_AD-7.6 Exam Pdf:** [https://www.prep4sures.top/NSE5\\_FSW\\_AD-7.6-exam-dumps-torrent.html](https://www.prep4sures.top/NSE5_FSW_AD-7.6-exam-dumps-torrent.html)

You can just free download the demo of our NSE5\_FSW\_AD-7.6 training materials to check, Fortinet NSE5\_FSW\_AD-7.6 Test Dates At the same time, you will have the chance to enjoy the 24-hours online service if you purchase our products, so we can make sure that we will provide you with an attentive service, Fortinet NSE5\_FSW\_AD-7.6 Test Dates Our company always lays great emphasis on offering customers more wide range of choice, The third format of the Prep4sures Fortinet NSE5\_FSW\_AD-7.6 exam dumps is the NSE5\_FSW\_AD-7.6 Dumps PDF.

Sometimes the horizontal rulers load with the origin at NSE5\_FSW\_AD-7.6 Reliable Exam Tips the top left edge of the document, but the vertical ruler origin is at the lower left corner of the document.

Besides, the exam practice questions and answers have wide coverage of the content of the examination and the correct rate is up to 100%, You can just free download the demo of our NSE5\_FSW\_AD-7.6 Training Materials to check.

## 2026 NSE5\_FSW\_AD-7.6: Fortinet NSE 5 - FortiSwitch 7.6 Administrator Realistic Test Dates 100% Pass Quiz

At the same time, you will have the chance to enjoy the 24-hours NSE5\_FSW\_AD-7.6 online service if you purchase our products, so we can make sure that we will provide you with an attentive service.

Our company always lays great emphasis on offering customers more wide range of choice, The third format of the Prep4sures Fortinet NSE5\_FSW\_AD-7.6 exam dumps is the NSE5\_FSW\_AD-7.6 Dumps PDF.

We offer the demo of the Fortinet NSE5\_FSW\_AD-7.6 dumps pdf 100% free of cost so that you can check the features of the Fortinet NSE5\_FSW\_AD-7.6 dumps before placing your order and paying for the product.

- Top NSE5\_FSW\_AD-7.6 Test Dates | Valid NSE5\_FSW\_AD-7.6: Fortinet NSE 5 - FortiSwitch 7.6 Administrator 100% Pass ↗ Go to website ( [www.practicevce.com](http://www.practicevce.com) ) open and search for ⇒ NSE5\_FSW\_AD-7.6 ⇐ to download for free  
□ Questions NSE5\_FSW\_AD-7.6 Pdf
- Top NSE5\_FSW\_AD-7.6 Test Dates | Valid NSE5\_FSW\_AD-7.6: Fortinet NSE 5 - FortiSwitch 7.6 Administrator 100% Pass □ Search for ➡ NSE5\_FSW\_AD-7.6 □ and download exam materials for free through ⇒ [www.pdfvce.com](http://www.pdfvce.com) ⇐ □  
□ Accurate NSE5\_FSW\_AD-7.6 Study Material
- NSE5\_FSW\_AD-7.6 Exam Training □ NSE5\_FSW\_AD-7.6 Study Group □ NSE5\_FSW\_AD-7.6 Study Group □  
Search on ➡ [www.practicevce.com](http://www.practicevce.com) □□□ for □ NSE5\_FSW\_AD-7.6 □ to obtain exam materials for free download □  
□ NSE5\_FSW\_AD-7.6 Exam Simulations
- Three in-Demand Fortinet NSE5\_FSW\_AD-7.6 Exam Questions Formats □ Download 《 NSE5\_FSW\_AD-7.6 》 for free by simply searching on □ [www.pdfvce.com](http://www.pdfvce.com) □ □ Questions NSE5\_FSW\_AD-7.6 Pdf

- Free PDF 2026 Fortinet Reliable NSE5\_FSW\_AD-7.6 Test Dates □ Search for □ NSE5\_FSW\_AD-7.6 □ and easily obtain a free download on { [www.practicevce.com](http://www.practicevce.com) } □ Latest Test NSE5\_FSW\_AD-7.6 Simulations
- NSE5\_FSW\_AD-7.6 Exam Training □ Current NSE5\_FSW\_AD-7.6 Exam Content □ Questions NSE5\_FSW\_AD-7.6 Pdf ↔ Open website 【 [www.pdfvce.com](http://www.pdfvce.com) 】 and search for ▶ NSE5\_FSW\_AD-7.6 ◀ for free download □ □ NSE5\_FSW\_AD-7.6 Latest Exam Discount
- Three in-Demand Fortinet NSE5\_FSW\_AD-7.6 Exam Questions Formats □ Open ▶ [www.testkingpass.com](http://www.testkingpass.com) ◀ enter ✓ NSE5\_FSW\_AD-7.6 □ ✓ □ and obtain a free download □ NSE5\_FSW\_AD-7.6 Latest Test Question
- 100% Pass Fortinet - Professional NSE5\_FSW\_AD-7.6 Test Dates □ Search for 《 NSE5\_FSW\_AD-7.6 》 on ▶ [www.pdfvce.com](http://www.pdfvce.com) ◀ immediately to obtain a free download □ NSE5\_FSW\_AD-7.6 Exam Training
- Three in-Demand Fortinet NSE5\_FSW\_AD-7.6 Exam Questions Formats □ Search for ☀ NSE5\_FSW\_AD-7.6 ☀ □ on ✓ [www.prepawaypdf.com](http://www.prepawaypdf.com) □ ✓ □ immediately to obtain a free download □ Updated NSE5\_FSW\_AD-7.6 Dumps
- NSE5\_FSW\_AD-7.6 Latest Test Question □ Current NSE5\_FSW\_AD-7.6 Exam Content □ Reliable NSE5\_FSW\_AD-7.6 Test Preparation □ Copy URL 【 [www.pdfvce.com](http://www.pdfvce.com) 】 open and search for ▶ NSE5\_FSW\_AD-7.6 ◀ to download for free □ Questions NSE5\_FSW\_AD-7.6 Pdf
- Questions NSE5\_FSW\_AD-7.6 Pdf □ New NSE5\_FSW\_AD-7.6 Exam Online □ NSE5\_FSW\_AD-7.6 Exam Training □ Download ➡ NSE5\_FSW\_AD-7.6 □ for free by simply entering ➡ [www.easy4engine.com](http://www.easy4engine.com) □ website □ □ Updated NSE5\_FSW\_AD-7.6 Dumps
- [hcpedu.study](http://hcpedu.study), [myportal.utt.edu.tt](http://myportal.utt.edu.tt), [myportal.utt.edu.tt](http://myportal.utt.edu.tt), [myportal.utt.edu.tt](http://myportal.utt.edu.tt), [myportal.utt.edu.tt](http://myportal.utt.edu.tt), [myportal.utt.edu.tt](http://myportal.utt.edu.tt), [myportal.utt.edu.tt](http://myportal.utt.edu.tt), [myportal.utt.edu.tt](http://myportal.utt.edu.tt), [myportal.utt.edu.tt](http://myportal.utt.edu.tt), [myportal.utt.edu.tt](http://myportal.utt.edu.tt), [myportal.utt.edu.tt](http://myportal.utt.edu.tt), [myportal.utt.edu.tt](http://myportal.utt.edu.tt), [myportal.utt.edu.tt](http://myportal.utt.edu.tt), [myportal.utt.edu.tt](http://myportal.utt.edu.tt), [myportal.utt.edu.tt](http://myportal.utt.edu.tt), [www.divephotoguide.com](http://www.divephotoguide.com), [www.stes.tyc.edu.tw](http://www.stes.tyc.edu.tw), [pct.edu.pk](http://pct.edu.pk), [www.stes.tyc.edu.tw](http://www.stes.tyc.edu.tw), [www.stes.tyc.edu.tw](http://www.stes.tyc.edu.tw), [www.stes.tyc.edu.tw](http://www.stes.tyc.edu.tw), [www.stes.tyc.edu.tw](http://www.stes.tyc.edu.tw), Disposable vapes