

# Why Should You Start Preparation With Linux Foundation KCNA Exam Dumps?

## The Linux Foundation KCNA Exam Dumps - Your Path To Pass The Exam

The Linux Foundation **KCNA Exam Dumps** are at your door; stop looking. High-quality Linux Foundation **KCNA Actual Questions** are available from our resource.

## Linux Foundation KCNA Dumps - Self Paced Learning Made Simple With The Exam

Want to succeed on your first attempt at the difficult Kubernetes and Cloud Native Associate Exam? **KCNA Exam Dumps** from **Pass4success** are your only option. Pass4success is aware that finding reliable Linux Foundation KCNA test dumps is difficult, and that having the appropriate study materials is the only way to pass the KCNA Kubernetes Cloud Native Associate certification. To make sure you have all the necessary information while preparing for the KCNA Kubernetes and Cloud Native Associate Exam, Pass4success has Linux Foundation KCNA dumps that have been carefully vetted. You are not required to attend any classes or sit in on any set times if you use Pass4success's Linux Foundation KCNA test dumps.

**KCNA Product Details:** [www.pass4success.com/product-detail/kcna](http://www.pass4success.com/product-detail/kcna)

## KCNA Exam Questions And Answers Professionally Curated And Verified

You need the appropriate Linux Foundation **KCNA Exam Questions** if you want to feel confident on the day of the KCNA Kubernetes Cloud Native Associate exam. The Linux Foundation **KCNA Genuine Questions** and answers package from Pass4success is just what you require. These Linux Foundation **KCNA Updated Questions** and answers cover every topic from the most recent curriculum for the KCNA Kubernetes and Cloud Native Associate Exam. This KCNA Kubernetes and Cloud Native Associate Exam Questions and

BTW, DOWNLOAD part of Prep4pass KCNA dumps from Cloud Storage: [https://drive.google.com/open?id=1LopoG4JdNFA3zT-\\_LEx-avq\\_ffUq7eXF](https://drive.google.com/open?id=1LopoG4JdNFA3zT-_LEx-avq_ffUq7eXF)

KCNA Exam Dumps add vivid examples and accurate charts to stimulate those exceptional cases you may be confronted with. KCNA Guide Torrent has been known as one of the world's leading providers of exam materials. KCNA Test Questions free updating for one year and half price for further partnerships.

The experts and professors of our company have designed the three different versions of the KCNA prep guide, including the PDF version, the online version and the software version. Now we are going to introduce the online version for you. There are a lot of advantages about the online version of the KCNA exam questions from our company. For instance, the online version can support any electronic equipment and it is not limited to all electronic equipment. More importantly, the online version of KCNA study practice dump from our company can run in an off-line state, it means that if you choose the online version, you can use the KCNA exam questions when you are in an off-line state. In a word, there are many advantages about the online version of the KCNA prep guide from our company.

>> 100% KCNA Accuracy <<

## KCNA Latest Braindumps Ebook - Valid KCNA Practice Materials

Our Prep4pass provides the latest and the most complete KCNA exam questions and answers aimed at becoming the most reliable dumps provider in IT exam software. With the help of our Prep4pass, nearly all those who have purchased our dumps have successfully passed the difficult KCNA Exam, which gives us great confidence to recommend our reliable products to you. We can assure you that we will fully refund the cost you purchased our dump, if you fail KCNA exam with our dumps. So, just rest assured to prepare for your exam.

## Linux Foundation Kubernetes and Cloud Native Associate Sample Questions (Q93-Q98):

NEW QUESTION # 93

In Kubernetes, which abstraction defines a logical set of Pods and a policy by which to access them?

- A. NetworkPolicy
- B. Service Account
- C. Custom Resource Definition
- **D. Service**

**Answer: D**

Explanation:

The correct answer is C: Service. A Kubernetes Service is an abstraction that provides stable access to a logical set of Pods. Pods are ephemeral: they can be rescheduled, recreated, and scaled, which changes their IP addresses over time. A Service solves this by providing a stable identity-typically a virtual IP (ClusterIP) and a DNS name-and a traffic-routing policy that directs requests to the current set of backend Pods.

Services commonly select Pods using labels via a selector (e.g., app=web). Kubernetes then maintains the backend endpoint list (Endpoints/EndpointSlices). The cluster networking layer routes traffic sent to the Service IP/port to one of the Pod endpoints, enabling load distribution across replicas. This is fundamental to microservices architectures: clients call the Service name, not individual Pods.

Why the other options are incorrect:

A ServiceAccount is an identity for Pods to authenticate to the Kubernetes API; it doesn't define a set of Pods nor traffic access policy.

A NetworkPolicy defines allowed network flows (who can talk to whom) but does not provide stable addressing or load-balanced access to Pods. It is a security policy, not an exposure abstraction.

A CustomResourceDefinition extends the Kubernetes API with new resource types; it's unrelated to service discovery and traffic routing for a set of Pods.

Understanding Services is core Kubernetes fundamentals: they decouple backend Pod churn from client connectivity. Services also integrate with different exposure patterns via type (ClusterIP, NodePort, LoadBalancer, ExternalName) and can be paired with Ingress/Gateway for HTTP routing. But the essential definition in the question-"logical set of Pods and a policy to access them"-is exactly the textbook description of a Service.

Therefore, the verified correct answer is C.

#### NEW QUESTION # 94

You are running a stateful application on Kubernetes that requires persistent data storage. Which of the following Kubernetes storage classes would be most suitable for this scenario?

- A. Standard
- **B. Persistent Volumes**
- C. HostPath
- D. Ephemeral
- E. Local Persistent Volumes

**Answer: B**

Explanation:

Persistent Volumes (PVs) are the most suitable storage class for stateful applications- They guarantee persistent data storage across pod restarts and provide a consistent interface for accessing the data

#### NEW QUESTION # 95

You have a Kubernetes cluster with a pod that uses a resource limit of 100m CPU. What happens if the pod requests more CPU resources than the limit?

- A. The pod will be automatically scaled down to 100m CPU.
- B. The pod will continue to run using the requested amount of CPU.
- **C. The pod will be throttled and its performance will be impacted.**
- D. The pod will be scheduled on a different node with more available resources.
- E. The pod will be killed and restarted.

**Answer: C**

Explanation:

The pod will be throttled and its performance will be impacted. The CPU limit acts as a hard ceiling, preventing the pod from consuming more resources than specified. Even if the pod requests more CPU, it will be constrained to the limit, leading to performance degradation. The pod will not be killed, restarted, or automatically scaled down. It will continue to run, but its performance will be affected due to the resource constraint.

#### NEW QUESTION # 96

Which of the following is a challenge derived from running cloud native applications?

- A. Cost optimization is complex to maintain across different public cloud environments.
- B. The lack of different container images available in public image repositories.
- C. The operational costs of maintaining the data center of the company.
- D. The lack of services provided by the most common public clouds.

**Answer: A**

Explanation:

The correct answer is B. Cloud-native applications often run across multiple environments-different cloud providers, regions, accounts/projects, and sometimes hybrid deployments. This introduces real cost-management complexity: pricing models differ (compute types, storage tiers, network egress), discount mechanisms vary (reserved capacity, savings plans), and telemetry/charge attribution can be inconsistent. When you add Kubernetes, the abstraction layer can further obscure cost drivers because costs are incurred at the infrastructure level (nodes, disks, load balancers) while consumption happens at the workload level (namespaces, Pods, services).

Option A is less relevant because cloud-native adoption often reduces dependence on maintaining a private datacenter; many organizations adopt cloud-native specifically to avoid datacenter CapEx/ops overhead. Option C is generally untrue-public registries and vendor registries contain vast numbers of images; the challenge is more about provenance, security, and supply chain than "lack of images." Option D is incorrect because major clouds offer abundant services; the difficulty is choosing among them and controlling cost/complexity, not a lack of services.

Cost optimization being complex is a recognized challenge because cloud-native architectures include microservices sprawl, autoscaling, ephemeral environments, and pay-per-use dependencies (managed databases, message queues, observability). Small misconfigurations can cause big bills: noisy logs, over-requested resources, unbounded HPA scaling, and egress-heavy architectures. That's why practices like FinOps, tagging/labeling for allocation, and automated guardrails are emphasized.

So the best answer describing a real, common cloud-native challenge is B.

#### NEW QUESTION # 97

Fluentd is the only way to export logs from Kubernetes cluster or applications running in cluster

- A. False
- B. True

**Answer: A**

Explanation:

<https://github.com/cncf/landscape#trail-map>

## CLOUD NATIVE TRAIL MAP

The Cloud Native Landscape [l.cncf.io](https://l.cncf.io) has a large number of options. This Cloud Native Trail Map is a recommended process for leveraging open source, cloud native technologies. At each step, you can choose a vendor-supported offering or do it yourself, and everything after step #3 is optional based on your circumstances.

### HELP ALONG THE WAY

#### A. Training and Certification

Consider training offerings from CNCF and then take the exam to become a Certified Kubernetes Administrator or a Certified Kubernetes Application Developer

[cncf.io/training](https://cncf.io/training)

#### B. Consulting Help

If you want assistance with Kubernetes and the surrounding ecosystem, consider leveraging a Kubernetes Certified Service Provider

[cncf.io/kcsp](https://cncf.io/kcsp)

#### C. Join CNCF's End User Community

For companies that don't offer cloud native services externally

[cncf.io/enduser](https://cncf.io/enduser)

### WHAT IS CLOUD NATIVE?

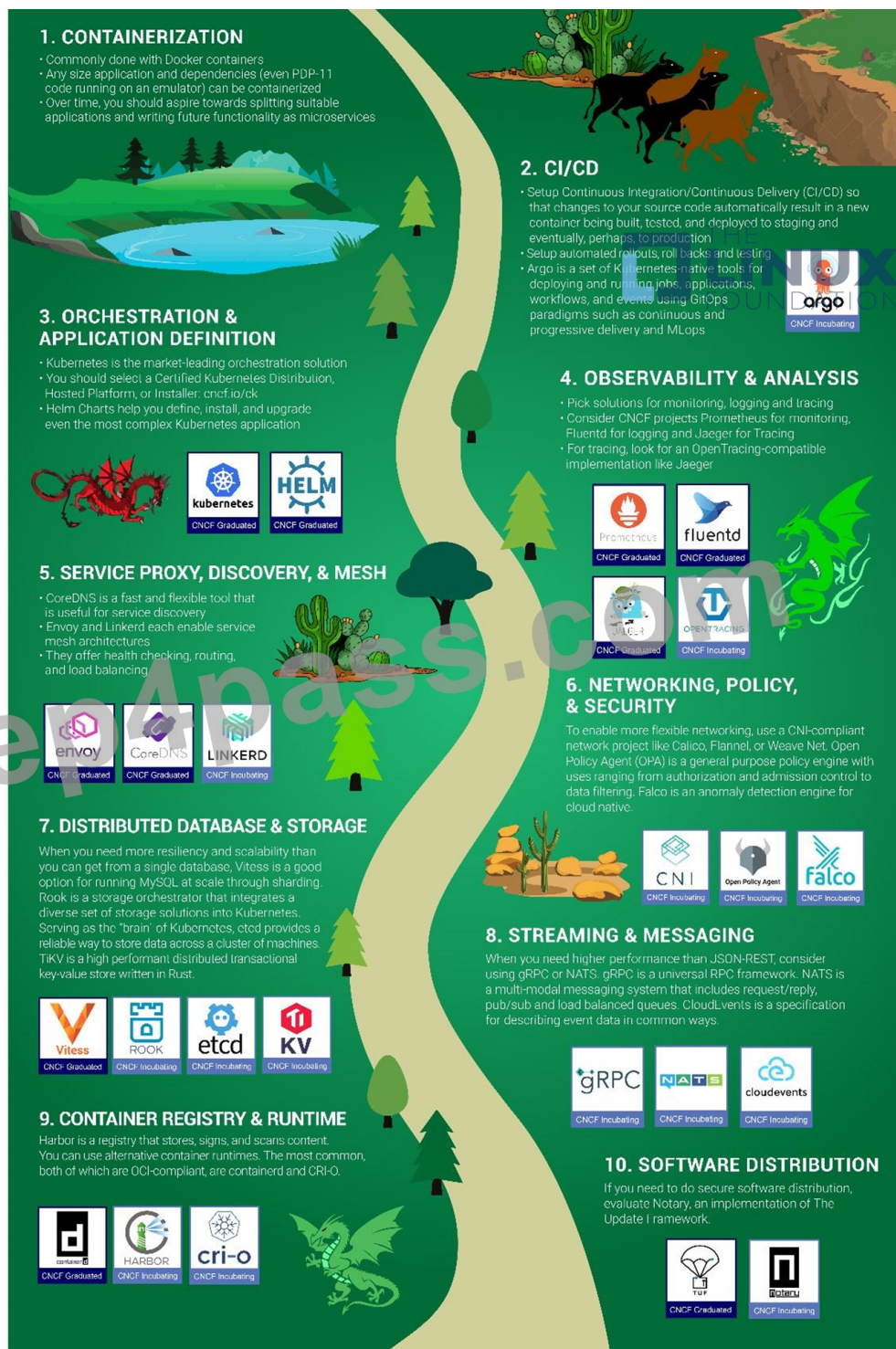
Cloud native technologies empower organizations to build and run scalable applications in modern, dynamic environments such as public, private, and hybrid clouds. Containers, service meshes, microservices, immutable infrastructure, and declarative APIs exemplify this approach.

These techniques enable loosely coupled systems that are resilient, manageable, and observable. Combined with robust automation, they allow engineers to make high-impact changes frequently and predictably with minimal toil.

The Cloud Native Computing Foundation seeks to drive adoption of this paradigm by fostering and sustaining an ecosystem of open source, vendor-neutral projects. We democratize state-of-the-art patterns to make these innovations accessible for everyone.

[l.cncf.io](https://l.cncf.io)

v20200501



### NEW QUESTION # 98

.....

If you are in search for the most useful KCNA exam dumps, you are at the right place to find us! Our KCNA training materials are full of the latest exam questions and answers to handle the exact exam you are going to face. with the help of our KCNA Learning Engine, you will find to pass the exam is just like having a piece of cake. And you will definite pass your exam for our KCNA pass guide has high pass rate as 99%!

**KCNA Latest Braindumps Ebook:** [https://www.prep4pass.com/KCNA\\_exam-braindumps.html](https://www.prep4pass.com/KCNA_exam-braindumps.html)

So let us take a look of KCNA exam preparatory together, If you are not certain whether the KCNA Exam Content prep guide from our company is suitable for you or not, so you are hesitate to buy and use our study materials, Our KCNA test questions are compiled by domestic first-rate experts and senior lecturer and the contents of them contain all the important information about the



What's more, part of that Prep4pass KCNA dumps now are free: [https://drive.google.com/open?id=1LopoG4JdNFA3zT-\\_LEavq\\_ftUq7eXF](https://drive.google.com/open?id=1LopoG4JdNFA3zT-_LEavq_ftUq7eXF)