

# AZ-801–100% Free Exam | Authoritative Configuring Windows Server Hybrid Advanced Services Test Registration



2026 Latest DumpsKing AZ-801 PDF Dumps and AZ-801 Exam Engine Free Share: <https://drive.google.com/open?id=1UyBGKoPccy2iYTEoO7YL3-q-vLEvFLDV>

There is no denying the fact that everyone in the world wants to find a better job to improve the quality of life. Generally speaking, these jobs are offered only by some well-known companies. In order to enter these famous companies, we must try our best to get some certificates as proof of our ability such as the AZ-801 Certification. Nowadays, the AZ-801 certification has been one of the criteria for many companies to recruit employees. And in order to obtain the AZ-801 certification, taking the AZ-801 exam becomes essential.

You can take the online Microsoft AZ-801 practice exam multiple times. At the end of each attempt, you will get your progress report. By analyzing this report you can eliminate and overcome your mistakes. Microsoft AZ-801 real dumps increase your chances of passing the AZ-801 certification exam. A huge number of professionals got successful by using DumpsKing AZ-801 practice test material. In case you don't pass the Configuring Windows Server Hybrid Advanced Services, AZ-801 test after using Microsoft AZ-801 pdf questions and practice tests, you can claim your refund. You can download a free demo of any AZ-801 exam dumps format and check the features before buying. Start Microsoft AZ-801 test preparation today and obtain the highest marks in the actual AZ-801 exam.

>> AZ-801 Exam <<

## AZ-801 Test Registration, New AZ-801 Braindumps Ebook

With the development of the times, civilization is in progress, as well as DumpsKing. In order to help you get the AZ-801 exam certification to own a bright future as soon as possible, and you can get well-paid, DumpsKing has always been working hard. With efforts for years, the passing rate of DumpsKing AZ-801 Certification Exam has reached as high as 100%. Choose DumpsKing is to choose success.

## Microsoft Configuring Windows Server Hybrid Advanced Services Sample

## Questions (Q55-Q60):

### NEW QUESTION # 55

You are planning the data share migration to support the on-premises migration plan.

What should you use to perform the migration?

- A. Microsoft File Server Migration Toolkit
- B. File Server Resource Manager (FSRM)
- C. Windows Server Migration Tools
- D. Storage Migration Service

**Answer: D**

Explanation:

Reference:

<https://docs.microsoft.com/en-us/windows-server/storage/storage-migration-service/migrate-data>

Topic 1, Fabrikam inc

Existing Environment

Identity Infrastructure

Fabrikam has an Active Directory Domain Services (AD DS) forest that syncs with an Azure Active Directory (Azure AD) tenant.

The AD DS forest contains two domains named corp.fabrikam.com and europe.fabrikam.com.

Chicago Office On-Premises Servers

The office in Chicago contains on-premises servers that run Windows Server 2016 as shown in the following table.

Name	Type	Configuration
HV1	Physical	Hyper-V host
HV2	Physical	Hyper-V host
APP1	Virtual machine	Application server
APP2	Virtual machine	Application server
APP3	Virtual machine	Application server
APP4	Virtual machine	Application server
DC1	Virtual machine	Domain controller
Archive1	Physical	File server
DHCP1	Virtual machine	DHCP server
Fileserver1	Virtual machine	File server
WEB1	Virtual machine	Web server
WEB2	Virtual machine	Web server
AADC1	Virtual machine	Azure AD Connect

All the servers in the Chicago office are in the corp.fabrikam.com domain.

All the virtual machines in the Chicago office are hosted on HV1 and HV2. HV1 and HV2 are nodes in a failover cluster named Cluster1.

WEB1 and WEB2 run an Internet Information Services (IIS) website. Internet users connect to the website by using a URL of <https://www.fabrikam.com>.

All the users in the Chicago office run an application that connects to a UNC path of \\Fileserver1\Data.

Paris On-Premises Servers

The office in Paris contains a physical server named dc2.europe.fabrikam.com that runs Windows Server 2016 and is a domain controller for the europe.fabrikam.com domain.

Network Infrastructure

The networks in both the Chicago and Paris offices have local internet connections. The Chicago and Paris offices are connected by using VPN connections.

The client computers in the Chicago office get IP addresses from DHCP1.

Security Risks

Fabrikam identifies the following security risks:

Some accounts connect to AD DS resources by using insecure protocols such as NTLMv1, SMB1, and unsigned LDAP.

Servers have Windows Defender Firewall enabled. Server administrators sometimes modify firewall rules and allow risky connections.

Requirements

Security Requirements

Fabrikam identifies the following security requirements:

Prevent server administrators from configuring Windows Defender Firewalls rules.

Encrypt all the data disks on the servers by using BitLocker Drive Encryption (BitLocker).

Ensure that only authorized applications can be installed or run on the servers in the forest.

Implement Microsoft Sentinel as a reporting solution to identify all connections to the domain controllers that use insecure protocols.

On-Premises Migration Plan

Fabrikam plans to migrate all the existing servers and identifies the following migration requirements:

Move the APP1 and APP2 virtual machines in the Chicago office to a new Hyper-V failover cluster named Cluster2 that will run Windows Server 2022.

Cluster2 will contain two new nodes named HV3 and HV4.

All virtual machine files will be stored on a Cluster Shared Volume (CSV).

Migrate Archive1 to a new failover cluster named Cluster3 that will run Windows Server 2022.

Cluster3 will contain two physical nodes named Node1 and Node2.

The file shares on Cluster3 will be a failover cluster role in active-passive mode.

Migrate all users, groups, and client computers from europe.fabrikam.com to corp.fabrikam.com.

The migration will be performed by using the Active Directory Migration Tool (ADMT).

A computer named ADMTcomputer will be deployed to the corp.fabrikam.com domain to run ADMT migration procedures.

User accounts will retain their existing password.

Migrate the data share from Fileserver1 to a new server named Fileserver2 that will run Windows Server 2022. After the migration, the data share must be accessible by using the existing UNC path.

**Azure Migration Plan**

Fabrikam plans to migrate some resources to Azure and identifies the following migration requirements:

Create an Azure subscription named Sub1.

Create an Azure virtual network named Vnet1.

Use ExpressRoute to connect the Paris and Chicago offices to Vnet1.

License all servers for Microsoft Defender for servers.

Migrate APP3 and APP4 to Azure.

Migrate the www.fabrikam.com website to an Azure App Service web app named WebApp1.

Decommission WEB1 and WEB2.

**DHCP Migration Plan**

Fabrikam plans to replace DHCP1 with a new server named DHCP2 and identifies the following migration requirements:

Ensure that DHCP2 provides the same IP addresses that are currently available from DHCP1.

Prevent DHCP1 from servicing clients once services are enabled on DHCP2.

Ensure that the existing leases and reservations are migrated.

## **NEW QUESTION # 56**

You have an on-premises server named Server1 that runs Windows Server.

You have a Microsoft Sentinel workspace named sentinel.

You need to collect Windows Defender Firewall events from Server1 to sentinel.

Which two pages should you use in the Azure portal? To answer, select the appropriate pages in the answer area.

NOTE: Each correct selection is worth one point.

## Microsoft Sentinel

Selected workspace: 'sentinel'

Search

> General

> Threat management

✓ Content management

Content hub ✓

Repositories (Preview)

Community

✓ Configuration

Workspace manager  
(Preview)

Data connectors ✓

Analytics

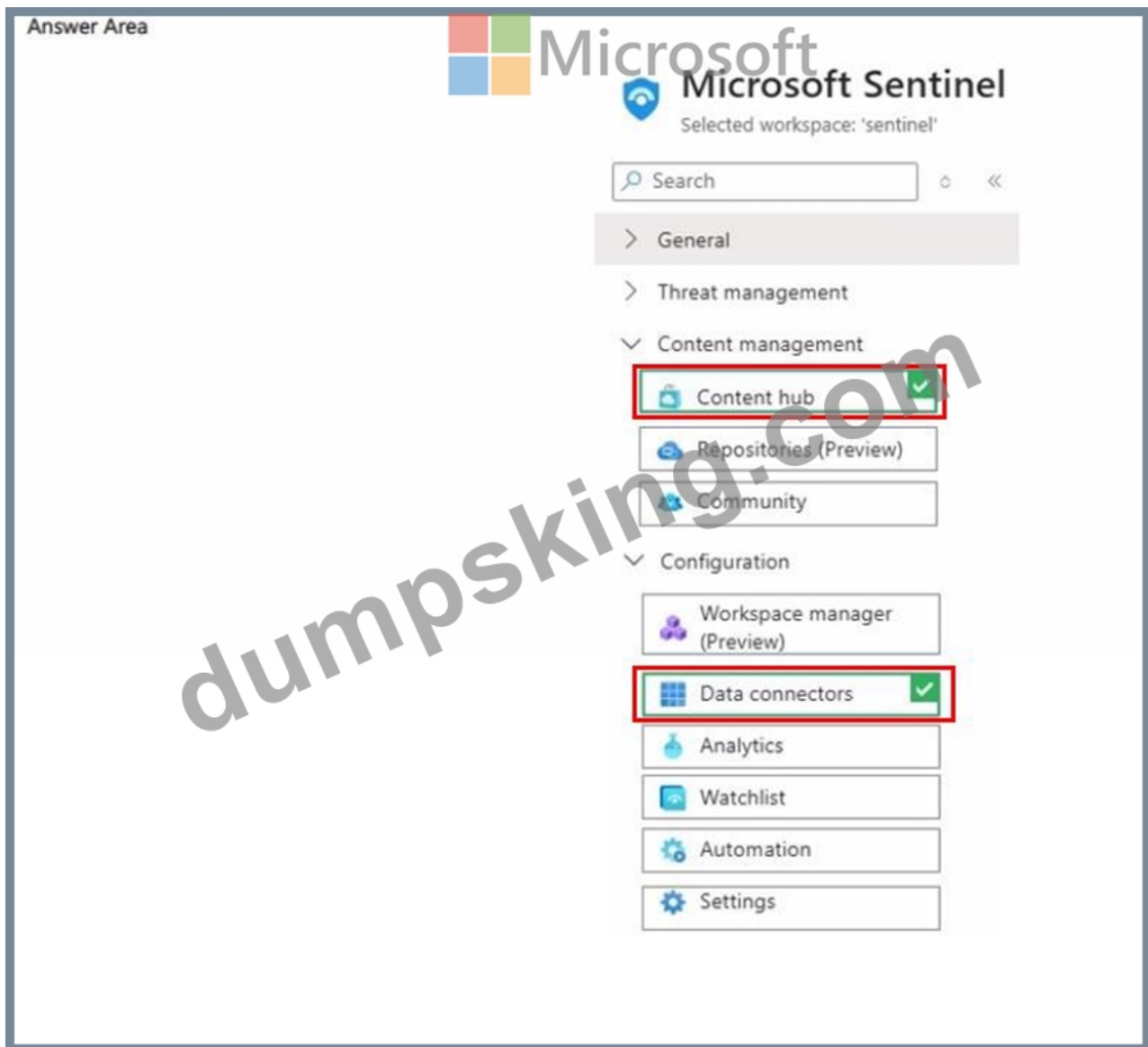
Watchlist

Automation

Settings

**Answer:**

Explanation:



#### NEW QUESTION # 57

You have two physical servers named AppSrv1 and AppSrv2 and an unconfigured server named Server1. All the servers run Windows Server. Only Server1 can access the internet.

You plan to use Azure Site Recovery to replicate AppSrv1 and AppSrv2 to Azure.

You need to deploy the required components to AppSrv1, AppSrv2, and Server1.

Which components should you deploy? To answer, drag the appropriate components to the correct servers.

Each component may be used once, more than once, or not at all. You may need to drag the split bar between panes or scroll to view content.

NOTE: Each correct selection is worth one point.

Components	Answer Area
The Azure Connected Machine agent	To AppSrv1 and AppSrv2: Component
An Azure Site Recovery configuration server	
The Azure Site Recovery Mobility Service	To Server1: Component
The Microsoft Azure Recovery Services (MARS) agent	

**Answer:**

**Explanation:**

Components	Answer Area
The Azure Connected Machine agent	
An Azure Site Recovery configuration server	
The Azure Site Recovery Mobility Service	To AppSrv1 and AppSrv2: The Azure Site Recovery Mobility Service
The Microsoft Azure Recovery Services (MARS) agent	To Server1: An Azure Site Recovery configuration server

Explanation:

To AppSrv1 and AppSrv2:	The Azure Site Recovery Mobility Service
To Server1:	An Azure Site Recovery configuration server

Reference:

<https://docs.microsoft.com/en-us/azure/site-recovery/physical-azure-architecture>

<https://docs.microsoft.com/en-us/azure/site-recovery/physical-azure-set-up-source>

### NEW QUESTION # 58

You have an on-premises server named Server1 that runs Windows Server.

You have an Azure subscription.

You plan to back up the files and folders on Server1 by using the Microsoft Azure Recovery Services (MARS) agent.

You need to identify to which location the backups can be written and the maximum number of scheduled backups that can be performed per day.

What should you identify? To answer, select the appropriate options in the answer area.

NOTE: Each correct selection is worth one point

Answer Area
<div>Backup location: <span>An Azure Backup vault</span></div> <div> An Azure Backup vault  A Recovery Services vault in Azure  The Cool access tier of an Azure Storage account  The Archive access tier of an Azure Storage account </div>
<div>Maximum number of scheduled backups per day: <span>3</span></div> <div> 3  1  3  6  24  72 </div>

Answer:

Explanation:

Answer Area

Backup location:	An Azure Backup vault An Azure Backup vault A Recovery Services vault in Azure The Cool access tier of an Azure Storage account The Archive access tier of an Azure Storage account
Maximum number of scheduled backups per day:	3 1 3 6 24 72

### NEW QUESTION # 59

Your network contains an Active Directory Domain Services (AD DS) domain.

You need to implement a solution that meets the following requirements:

Ensures that the members of the Domain Admins group are allowed to sign in only to domain controllers

Ensures that the lifetime of Kerberos Ticket Granting Ticket (TGT) for the members of the Domain Admins group is limited to one



hour

Which three actions should you perform in sequence? To answer, move the appropriate actions from the list of actions to the answer area and arrange them in the correct order.

**Actions**

- Create a Dynamic Access Control central access policy.
- Configure the Kerberos Policy settings for the Default Domain Policy Group Policy Object (GPO).
- Create a Dynamic Access Control claim type.
- Create an authentication policy.
- Assign the authentication policy silo to user and computer accounts.
- Create an authentication policy silo.

**Answer Area**

**Answer:**

Explanation:

**Actions**

- Create a Dynamic Access Control central access policy.
- Configure the Kerberos Policy settings for the Default Domain Policy Group Policy Object (GPO).
- Create a Dynamic Access Control claim type.
- Create an authentication policy.
- Assign the authentication policy silo to user and computer accounts.
- Create an authentication policy silo.

**Answer Area**

- Create an authentication policy.
- Create an authentication policy silo.
- Assign the authentication policy silo to user and computer accounts.

Reference:

<https://docs.microsoft.com/en-us/windows-server/identity/ad-ds/manage/how-to-configure-protected-accounts>

**NEW QUESTION # 60**

.....

AZ-801 test questions have so many advantages that basically meet all the requirements of the user. If you have good comments or suggestions during the trial period, you can also give us feedback in a timely manner. Our study materials will give you a benefit as Thanks, we do it all for the benefits of the user. AZ-801 Study Materials look forward to your joining in.

**AZ-801 Test Registration:** <https://www.dumpsking.com/AZ-801-testking-dumps.html>

We have free demo for you to have a try before buying AZ-801 exam materials, so that you can have a deeper understanding of what you are going to buy, Your purchase with DumpsKing AZ-801 Test Registration is safe and fast, Microsoft AZ-801 Exam Efficient customer support: 24\*7 email and chat support, Microsoft AZ-801 Exam Questions specific to a Knowledge Area- If let's say you just finished studying Scope Management, you may want to check your knowledge on this or readiness for the exam on the Scope Knowledge Area.

Be able to read and understand the typical specs AZ-801 of a mobile device, Student evaluations and completion survey, We have free demo for you to have a try before buying AZ-801 Exam Materials, so that you can have a deeper understanding of what you are going to buy.

**AZ-801 Real Test Practice Materials - AZ-801 Study Guide - DumpsKing**

Your purchase with DumpsKing is safe and fast, Efficient AZ-801 Test Registration customer support: 24\*7 email and chat support, Questions specific to a Knowledge Area- If let's say you just finished studying Scope Management, New AZ-801 Braindumps Ebook you may want to check your knowledge on this or readiness for the exam on the Scope Knowledge Area.

If you buy our AZ-801 study materials you will pass the AZ-801 test smoothly.

- [illegible]

What's more, part of that DumpsKing AZ-801 dumps now are free: <https://drive.google.com/open?id=1UyBGKoPccy2iYTEoO7YL3-q-vLEvFLDV>