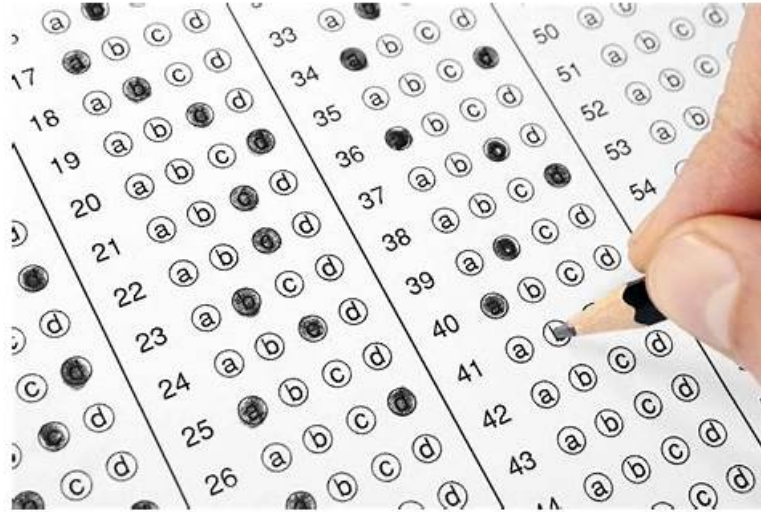


# Reliable Applied-Algebra Test Review | Valid Braindumps Applied-Algebra Ebook



The Applied-Algebra desktop-based practice exam is compatible with Windows-based computers and only requires an internet connection for the first-time license validation. The web-based Applied-Algebra practice test is accessible on any browser without needing to install any separate software. Finally, the Applied-Algebra Dumps PDF is easily portable and can be used on smart devices or printed out. We constantly update the Applied-Algebra pdf file to ensure customers receive the latest version of WGU Applied-Algebra questions, based on the actual WGU Applied Algebra FXO2 PFXP C957 (Applied-Algebra) exam content.

What is more, some after-sales services behave indifferently towards exam candidates who eager to get success, our Applied-Algebra practice materials are on the opposite of it. So just set out undeterred with our Applied-Algebra practice materials, These Applied-Algebra practice materials win honor for our company, and we treat it as our utmost privilege to help you achieve your goal. Our Applied-Algebra practice materials are made by our responsible company which means you can gain many other benefits as well.

>> **Reliable Applied-Algebra Test Review** <<

## **Error-Free WGU Applied-Algebra Exam Questions PDF Format**

Our Applied-Algebra training dumps are deemed as a highly genius invention so all exam candidates who choose our Applied-Algebra exam questions have analogous feeling that high quality our practice materials is different from other practice materials in the market. So our Applied-Algebra study braindumps are a valuable invest which cost only tens of dollars but will bring you permanent reward. So many our customers have benefited form our Applied-Algebra preparation quiz, so will you!

## **WGU Applied Algebra FXO2 PFXP C957 Sample Questions (Q41-Q46):**

### **NEW QUESTION # 41**

Based on collected data, the number of employees at a firm can be modeled using the function  $f(x)=10 \times \# 1.09 \#$