

# 300-425 Certification Torrent | 300-425 PDF VCE

## Introducing a Q2 Response

The first sentence of your introduction to your Q2 response should address the specific topic in the task, develop an interpretation and do this through the framework of a critical lens. The example below is responding to the key word 'control' and develops a Marxist interpretation of the text:

Develop an overall interpretation of the text in response to the key word in the Q2 task	Present the interpretation through the framework of a critical lens or theory
Bram Stoker's <i>Dracula</i> <b>represents and ultimately indicts</b> the material power and control	of the bourgeoisie - embodied by the novel's protagonist - to control and commodify people.

Since the Q2 task asks you to discuss how an idea is "endorsed, challenged and/or marginalised by the text", you should use one of the words or a synonym to present your interpretation. Try writing a first sentence for a Q2 response now. Use one of the words from the list below to introduce an interpretation. Use words from one of the critical theory vocabulary lists (pages 21-29) to frame your interpretation.

Endorses	Challenges	Marginalises
celebrates extols idealises romanticises conveys the importance of represents the profound impact of illustrates the meaning of	subverts criticises condemns decries probes interrogates exposes reveals contradicts	silences erases excludes overlooks dismisses renders invisible fails to represent

The second or third sentence of your introduction only needs to be two sentences but can be longer) should follow on from the first by identifying an aspect or elements of the passage that will be used as a basis for developing this interpretation, and the text as a whole as is demonstrated by the below example:

First sentence:	Bram Stoker's <i>Dracula</i> represents and ultimately indicts the material power of the bourgeoisie - embodied by the novel's protagonist - to control and commodify people.
Second sentence:	As <i>Dracula</i> exposes his capitalist authority, individuals around him lose their humanity and fail to realise consciousness where they accept their exploitation at his hands.

BTW, DOWNLOAD part of PracticeMaterial 300-425 dumps from Cloud Storage: [https://drive.google.com/open?id=1sRx3ZV\\_8MleDOQQuk2aXoRed\\_wBaoIqA](https://drive.google.com/open?id=1sRx3ZV_8MleDOQQuk2aXoRed_wBaoIqA)

During the operation of the 300-425 study materials on your computers, the running systems of the 300-425 study guide will be flexible, which saves you a lot of troubles and help you concentrate on study. If you try on it, you will find that the operation systems of the 300-425 Exam Questions we design have strong compatibility. So the running totally has no problem. And you can free download the demos of the 300-425 practice engine to have a experience before payment.

## Career Prospects and Other Benefits

After successfully completing the Cisco 300-425 and Cisco 350-401 exams, you will become eligible for the CCNP Enterprise certification. It is highly beneficial to the IT specialists who design Cisco wireless networks, particularly in terms of employment opportunities and career growth.

## Wired & Wireless Infrastructure

This subject area makes up 30% of the overall content and measures the applicants' skills in the following:

- Designing wireless networks that are high in density and their related components, including the campus, lecture halls, and conference rooms;
- Determining the requirements of logical infrastructure, which include the WLC/AP licensing needs based on the type of wireless architecture;

- Designing wireless bridging, such as Ethernet bridging, modes of operation, and WGB & roaming.

>> 300-425 Certification Torrent <<

## Get Customizable practice test for Cisco 300-425 Certification

Although our company has designed the best and most suitable 300-425 learn prep, we also do not stop our step to do research about the 300-425 study materials. All experts and professors of our company have been trying their best to persist in innovate and developing the 300-425 test training materials all the time in order to provide the best products for all people and keep competitive in the global market. We believe that the 300-425 Study Materials will keep the top selling products. We sincerely hope that you can pay more attention to our 300-425 study questions.

Cisco 300-425 certification exam, also known as Designing Cisco Enterprise Wireless Networks, is a popular certification exam for IT professionals seeking to validate their skills in designing, deploying, and configuring enterprise wireless networks. Designing Cisco Enterprise Wireless Networks certification exam is designed for network professionals who are responsible for designing and implementing wireless networks in large organizations. 300-425 Exam covers a wide range of topics, including wireless network design, deployment, security, and troubleshooting.

## Cisco Designing Cisco Enterprise Wireless Networks Sample Questions (Q39-Q44):

### NEW QUESTION # 39

Which two criteria must be considered when conducting an outdoor bridge site survey? (Choose two.)

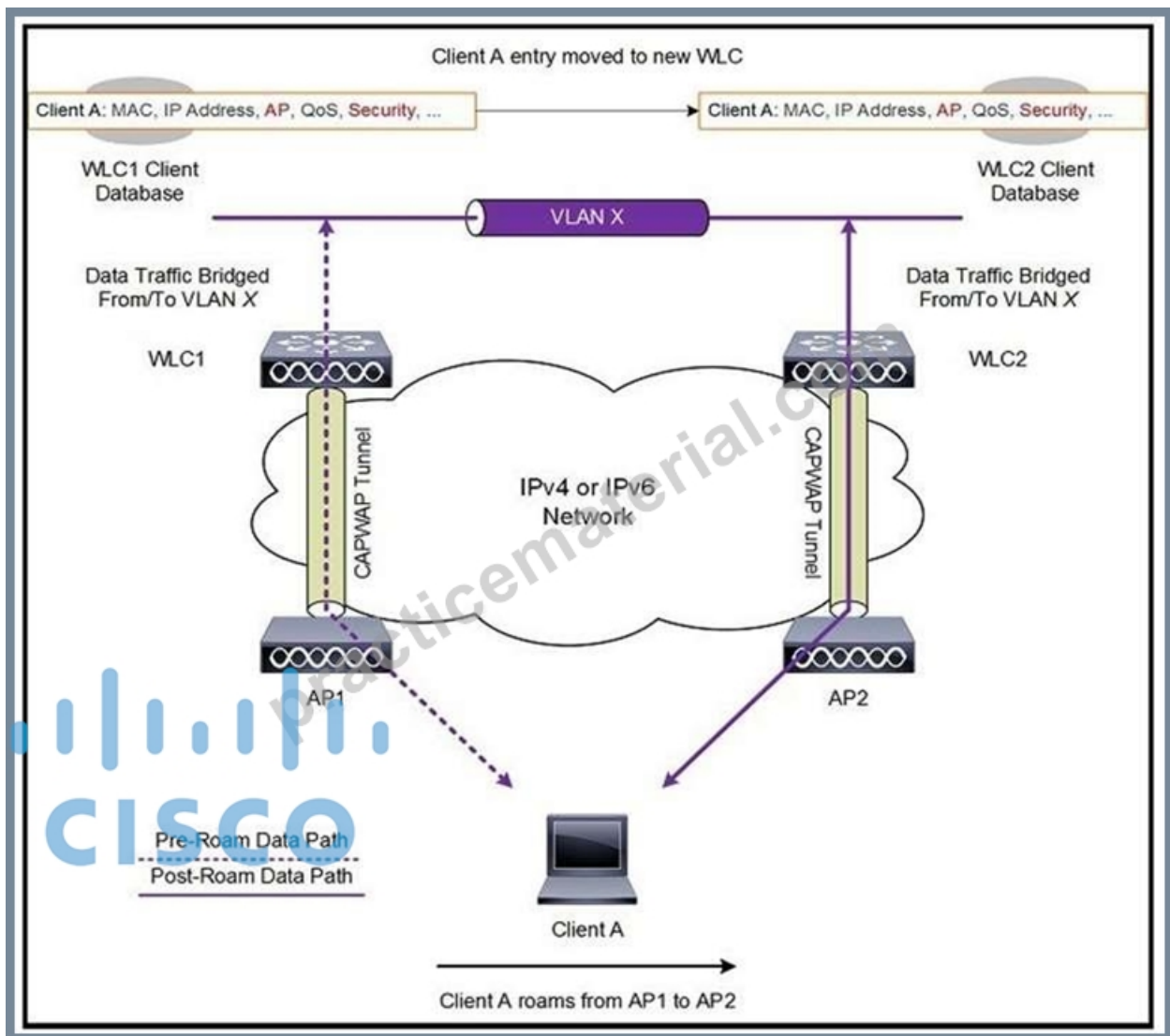
- A. near-far effect
- B. power lines
- C. weather
- D. traffic lights
- E. Fresnel zone

**Answer: A,B**

Explanation:

<https://www.cisco.com/c/en/us/support/docs/wireless/5500-series-wireless-controllers/116057-site-survey-guidelines-wlan-00.html#anc7>

### NEW QUESTION # 40



Refer to the exhibit. A client roams between two APs that are registered to two different controllers, where each controller has an interface in the client subnet. Both controllers are running AireOS. Which scenario explains the client roaming behavior?

- A. Controllers exchange mobility control messages (over UDP port 16666) and the client database entry is tunneled from the original controller to the new controller.
- B. Controllers do not exchange mobility control messages (over UDP port 16666) and the client database entry is not moved from the original controller to the new controller.
- C. Controllers exchange mobility control messages (over UDP port 16666) and the client database entry is moved from the original controller to the new controller.
- D. Controllers exchange mobility control messages (over UDP port 16666) and a new client session is started with the new controller.

**Answer: C**

#### NEW QUESTION # 41

An engineer is performing a predictive wireless design for a medical treatment environment, which requires data and voice services. What is the minimum requirement for the design?

- A. continuous -72 dBm coverage from one access point
- B. overlapping -72 dBm coverage from two access points
- C. overlapping -67 dBm coverage from two access points
- D. continuous -67 dBm coverage from one access point

**Answer: D**

Explanation:

✓ The TX power of 17 dBi is 50mW. What you see on your laptop of a -20 dBm is a good signal. Cisco's recommendation for data is a max of -72 dBm and for voice it is -65dBm. You will notice this when you start walking away from your AP. So if you are planning on adding another ap, you would want your coverage to be bordering either -72 dBm or -65 dBm.

So -67dBm covers both Data & Voice with a single AP

#### NEW QUESTION # 42

A customer has determined that aesthetics is a primary concern for their upcoming guest deployment. Which design consideration can be leveraged to address this concern?

- A. Deploy environmentally friendly cabling components to blend into the environment.
- B. Use AIR-AP-BRACKET-1 to allow for greater mounting locations
- C. Paint the access point to cover the LED from being noticeable.
- D. Use enclosures to hide the wireless infrastructure in the surrounding environment.

Answer: A

Explanation:

- Use cables that are resistive to bend loss if excessive bending of cables cannot be prevented due to installation constraints.
- Avoid mounting the cabling components in places that block accessibility to other equipment (such as a power strip or fans) in and out of the racks.

#### NEW QUESTION # 43

A wireless engineer is designing a wireless network to support real-time applications over wireless. Which IEEE protocol must the engineer enable on the WLC so that the number of packets that are exchanged between an access point and client are reduced and fast roaming occurs?

- A. 802.11k
- B. 802.11r
- C. 802.11i
- D. 802.11w

Answer: B

Explanation:

802.11r reduces the number of packets that are exchanged between the client and an AP. The client preauthenticates to the AP it will roam to before actually roaming. This means the roam itself occurs faster because the AP already has the client authentication credentials cached, resulting in fewer packets required between the client and the AP.

#### NEW QUESTION # 44

.....

300-425 PDF VCE: <https://www.practicematerial.com/300-425-exam-materials.html>

- Test 300-425 Preparation □ 300-425 Training Pdf □ Test 300-425 Preparation □ Go to website □ [www.getvalidtest.com](http://www.getvalidtest.com) □ open and search for [ 300-425 ] to download for free □ Latest 300-425 Exam Practice
- 300-425 Trustworthy Dumps □ Latest 300-425 Test Practice □ Training 300-425 Kit □ Search on ▷ [www.pdfvce.com](http://www.pdfvce.com) ◁ for ▶ 300-425 ◁ to obtain exam materials for free download □ 300-425 New Braindumps Book
- Test 300-425 Preparation □ 300-425 Study Guide Pdf □ New 300-425 Exam Book i Easily obtain free download of ▶ 300-425 ◁ by searching on 《 [www.vceengine.com](http://www.vceengine.com) 》 □ 300-425 Study Guide Pdf
- Latest 300-425 Test Practice □ 300-425 Actual Questions □ 300-425 Trustworthy Dumps □ Immediately open [ [www.pdfvce.com](http://www.pdfvce.com) ] and search for ➡ 300-425 □ to obtain a free download □ Reliable 300-425 Exam Vce
- 100% Pass 2025 High Hit-Rate 300-425: Designing Cisco Enterprise Wireless Networks Certification Torrent x Go to website ☼ [www.dumpsquestion.com](http://www.dumpsquestion.com) □ ☼ □ open and search for “ 300-425 ” to download for free □ 300-425 Valid Exam Cram
- Cisco 300-425 Exam Questions Available At 25% Discount With Free Demo □ Simply search for ➤ 300-425 □ for free download on ⇒ [www.pdfvce.com](http://www.pdfvce.com) ⇐ □ 300-425 Trustworthy Dumps

- 2025 Latest PracticeMaterial 300-425 PDF Dumps and 300-425 Exam Engine Free Share: [https://drive.google.com/open?id=1sRx3ZV\\_8MleDOQQuk2aXoRed\\_wBaoIqA](https://drive.google.com/open?id=1sRx3ZV_8MleDOQQuk2aXoRed_wBaoIqA)

2025 Latest PracticeMaterial 300-425 PDF Dumps and 300-425 Exam Engine Free Share: [https://drive.google.com/open?id=1sRx3ZV\\_8MleDOQQuk2aXoRed\\_wBaoIqA](https://drive.google.com/open?id=1sRx3ZV_8MleDOQQuk2aXoRed_wBaoIqA)