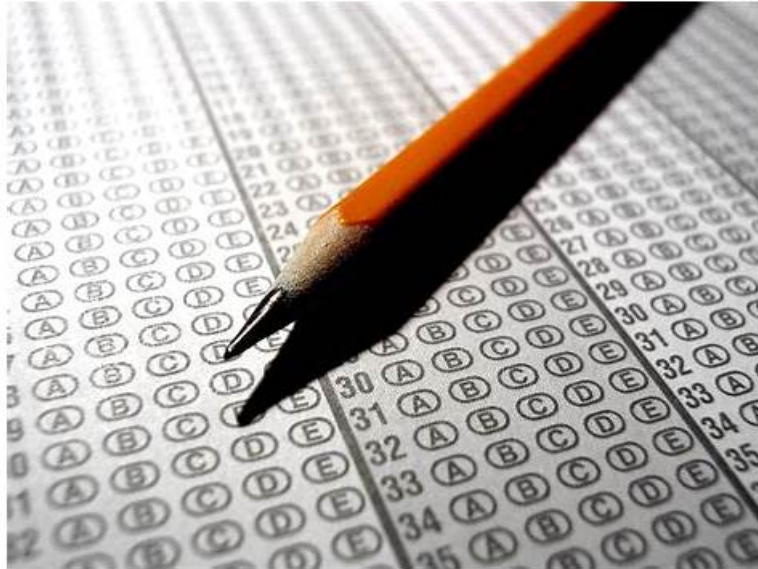


# CTAL-TAE Valid Test Objectives | New CTAL-TAE Test Questions



DOWNLOAD the newest Exam4Docs CTAL-TAE PDF dumps from Cloud Storage for free: <https://drive.google.com/open?id=1f8hUyjrUw9U34W3YQJccwLuPGVXOH1S>

A good brand is not a cheap product, but a brand that goes well beyond its users' expectations. The value of a brand is that the CTAL-TAE study materials are more than just exam preparation tool -- it should be part of our lives, into our daily lives. Do this, therefore, our CTAL-TAE Study Materials has become the industry well-known brands, but even so, we have never stopped the pace of progress, we have been constantly updated the CTAL-TAE study materials.

To be eligible to take the CTAL-TAE exam, candidates must have already achieved the ISTQB Foundation Level Certification in software testing. They must also have completed the ISTQB Advanced Level Test Analyst or Technical Test Analyst certification, or have equivalent experience in the field of software testing.

The CTAL-TAE certification exam is offered by the International Software Quality Institute (ISQI) and is based on the guidelines provided by the International Software Testing Qualifications Board (ISTQB). CTAL-TAE Exam is intended for software testers who want to demonstrate their knowledge and skills in test automation engineering. It is also suitable for professionals involved in the development and maintenance of automated testing solutions.

>> CTAL-TAE Valid Test Objectives <<

## ISTQB Certified Tester Advanced Level, Test Automation Engineering passleader free questions & CTAL-TAE valid practice dumps

The pass rate for CTAL-TAE learning materials is 98.35%, and pass guarantee and money back guarantee if you fail to pass the exam. CTAL-TAE exam dumps are verified by experienced specialists, therefore, we can guarantee the correctness of the answers. CTAL-TAE Learning Materials of us will give you free update for 365 days after purchasing, and the latest version will send to your email box automatically. If you have any other questions about the CTAL-TAE exam dumps, just contact us.

Achieving the CTAL-TAE certification demonstrates the candidate's expertise and proficiency in test automation engineering. ISTQB Certified Tester Advanced Level, Test Automation Engineering certification is highly valued by employers and is a prerequisite for many senior-level positions in software testing. The CTAL-TAE certification is also a stepping stone for professionals who wish to pursue a career in test management or software quality assurance. With the growing demand for automation testing, the CTAL-TAE Certification provides professionals with a competitive edge in the job market and opens up new career opportunities.

## ISQI ISTQB Certified Tester Advanced Level, Test Automation Engineering

## Sample Questions (Q55-Q60):

### NEW QUESTION # 55

Consider a TAS deployed into production. The SUT is a web application and the test suite consists of a set of automated regression tests developed via GUI. A keyword-driven framework has been adopted for automating the regression tests. The tests are based on identification at low-levels of the web page components (e.g class indexes, tab sequence indexes and coordinates) in the next planned release the SUT will be subject to significant corrective maintenance (bug-fixes) and evolution (new features) Maintenance costs to update the test scripts should be as low as possible and the scripts must be highly reusable.

Which of the following statements is most likely to be TRUE?

- A. The keyword-driven framework introduces a level abstraction that is too high and makes it difficult what really happens
- B. The total execution time of the automated regression test suite will decrease for each planned release.
- C. False positive errors are likely to occur when running the automated tests on the new releases without modifying the test
- D. The keyword-driven framework is not suitable, it would be better to adopt a structured-scripting approach

**Answer: D**

### NEW QUESTION # 56

You are using a gTAA to create a TAS for a project. The TAS is aimed specifically at automating a suit of existing manual test cases for standalone desktop applications. All the interfaces between the TAS and SUT will be from the CUI of the application.

Which of the following layers of the gTAA should you focus on for the TAS?

- A. The Test Execution layer
- B. The Test Definition layer
- C. The Test Adaption layer
- D. The test Generation layer

**Answer: D**

### NEW QUESTION # 57

Which of the following practices can be used to specify the active (i.e., actually available) features for each release of the SUT and determine the corresponding automated tests that must be executed for a given release?

- A. The use of feature toggles
- B. Test-driven development
- C. The use of feature files
- D. Feature-driven development

**Answer: A**

Explanation:

TAE materials commonly describe feature toggles (feature flags) as a mechanism to control which features are active in a given release or deployment without necessarily changing the codebase structure for each variant. Because toggles determine what functionality is actually enabled, they provide a practical basis for selecting which automated tests should run for that release configuration. When a feature is disabled via a toggle, executing tests for it can create false failures or wasted effort; when enabled, the corresponding tests become relevant as release evidence. Feature-driven development is a product/development planning approach and does not, by itself, provide an operational mechanism to declare what is active at runtime.

Feature files (often associated with BDD) specify behavior scenarios, but they do not inherently indicate whether a feature is active in a particular release unless explicitly tied to toggles or release configuration.

TDD focuses on coding practices at the unit level and similarly does not specify release-time feature availability. Feature toggles directly express "active vs. inactive" functionality and can be used to drive risk- based and relevance-based test execution decisions, matching the requirement precisely.

### NEW QUESTION # 58

The last few runs for a suite of automated keyword-driven tests on a SUT were never completed. The test where the run was aborted was not the same between runs. Currently, it is not possible to identify the root cause of these aborts, but only determine that test execution aborted when exceptions (e.g., NullPointerException, OutOfMemoryError) occurred on the SUT by analyzing its

log files. Test execution log files are currently generated, in HTML format, by the TAS as follows: all expected logging data is logged for each keyword in intermediate log files. This data is then inserted into the final log file only for keywords that fail, while only a configurable subset of that data is logged for keywords that execute successfully. Which of the following actions (assuming it is possible to perform all of them) would you take FIRST to help find the root cause of the aborts?

- A. Log the stack trace and amount of memory available to the SUT at the start and end of each test in the suite, in the SUT log files
- **B. Log all expected logging data in the final test execution log file, not only for keywords that fail, but also for keywords that execute successfully**
- C. Split the generated log file into smaller parts, load them into external files that are loaded into the browser in transparent mode when needed
- D. Use appropriate colors to effectively visually highlight different types of information in the test execution log files

**Answer: B**

Explanation:

TAE stresses that when diagnosing intermittent aborts with unclear root cause, the first priority is ensuring sufficient, consistent observability from the automation side to reconstruct what happened immediately before termination. In this scenario, the suite aborts in different tests across runs, and the final HTML report currently contains full detail only for failing keywords, while successful keywords have reduced logging. If the run aborts due to an exception in the SUT, the "last executed successful keywords" and their full context may be essential to correlate actions with the SUT failure point. The fastest, most direct improvement is to include complete keyword-level logging for successful steps as well, at least until the issue is understood. This aligns with TAE guidance to temporarily increase logging verbosity during investigation to capture the sequence of actions, inputs, timings, and states leading up to failure. Option A could be helpful, but it changes SUT-side logging and may require additional access or instrumentation; also, it does not guarantee visibility into the exact automation step sequence. Options B and D improve presentation/performance of logs but do not add diagnostic content. Therefore, first increase the completeness of the final execution logs for all keywords to maximize evidence for root cause analysis.

#### NEW QUESTION # 59

A regression test suite consist of 500 test cases which are all executed manually. The business case for a pilot project is based on the adoption of test automation using a commercial tool that will reduce the execution time by a factor of 90% for 100% of the tests in the regression test suite. The pilot project lasted one month ( as planned) and you are currently its results. At the end of the pilot project, 40% of the regression tests have been automated and their execution time has been reduce by 60%. Which of the following statements is TRUE in this scenario?

- A. The project selected for the pilot is too critical -if should not be too critical or too trivial
- B. The duration of the pilot project was too short -it should last unit the success factors are achieved
- C. The target defined for the business case is too accurate -it should not be measureable
- **D. Thetarget defined for the business case seems difficult to hit - it should be realistic**

**Answer: D**

#### NEW QUESTION # 60

.....

**New CTAL-TAE Test Questions:** <https://www.exam4docs.com/CTAL-TAE-study-questions.html>

- Free PDF Quiz ISQI - Authoritative CTAL-TAE - ISTQB Certified Tester Advanced Level, Test Automation Engineering Valid Test Objectives  Search on [www.exam4labs.com](http://www.exam4labs.com)  for **▶▶** CTAL-TAE  to obtain exam materials for free download  Latest CTAL-TAE Dumps Ppt
- Exam CTAL-TAE Braindumps  CTAL-TAE Reliable Test Blueprint  CTAL-TAE Exam Sims  Search for ( CTAL-TAE ) on  [www.pdfvce.com](http://www.pdfvce.com)  immediately to obtain a free download  CTAL-TAE Exam Actual Questions
- CTAL-TAE Reliable Test Testking  CTAL-TAE Exam Sims  CTAL-TAE Reliable Test Testking  Open **▶▶** [www.dumpsmaterials.com](http://www.dumpsmaterials.com)  and search for **▶▶** CTAL-TAE  to download exam materials for free  CTAL-TAE Exam Actual Questions
- Free PDF Quiz ISQI - Authoritative CTAL-TAE - ISTQB Certified Tester Advanced Level, Test Automation Engineering Valid Test Objectives  Search for ( CTAL-TAE ) and download it for free on **▶▶** [www.pdfvce.com](http://www.pdfvce.com)  website  CTAL-TAE Reliable Test Blueprint
- CTAL-TAE Latest Study Notes  CTAL-TAE Reliable Test Testking  CTAL-TAE Exam Exercise  Search for

- CTAL-TAE ☐ and obtain a free download on ( [www.pass4test.com](http://www.pass4test.com) ) ☐CTAL-TAE Reliable Test Blueprint
- Free PDF Quiz ISQI - Authoritative CTAL-TAE - ISTQB Certified Tester Advanced Level, Test Automation Engineering Valid Test Objectives ☐ Search for ▷ CTAL-TAE ◁ and download exam materials for free through ► [www.pdfvce.com](http://www.pdfvce.com) ☐ ☐Dump CTAL-TAE Check
  - New CTAL-TAE Exam Pattern ☐ New CTAL-TAE Exam Pattern ☐ CTAL-TAE Useful Dumps ☐ Simply search for 「 CTAL-TAE 」 for free download on ➡ [www.testkingpass.com](http://www.testkingpass.com) ☐ ☐New CTAL-TAE Exam Pattern
  - Free PDF Quiz ISQI - Authoritative CTAL-TAE - ISTQB Certified Tester Advanced Level, Test Automation Engineering Valid Test Objectives ☐ Search for ▷ CTAL-TAE ◁ and download exam materials for free through 【 [www.pdfvce.com](http://www.pdfvce.com) 】 ☐Reliable CTAL-TAE Exam Pdf
  - CTAL-TAE Exam Actual Questions ☐ Exam CTAL-TAE Braindumps ☐ CTAL-TAE Exam Score ☐ Search for ☼ CTAL-TAE ☐☼☐ on ➡ [www.dumpsmaterials.com](http://www.dumpsmaterials.com) ☐ immediately to obtain a free download ☐CTAL-TAE Valid Dumps Ebook
  - Pass-Sure CTAL-TAE Valid Test Objectives offer you accurate New Test Questions | ISTQB Certified Tester Advanced Level, Test Automation Engineering ☐ Go to website 《 [www.pdfvce.com](http://www.pdfvce.com) 》 open and search for [ CTAL-TAE ] to download for free ☐CTAL-TAE Reliable Test Blueprint
  - CTAL-TAE Testking Exam Questions ☐ CTAL-TAE Useful Dumps ☐ New CTAL-TAE Exam Pattern ☐ Easily obtain 「 CTAL-TAE 」 for free download through ☐ [www.prepawayexam.com](http://www.prepawayexam.com) ☐ ☐CTAL-TAE Exam Exercise
  - [bookmarklogin.com](http://bookmarklogin.com), [larissaspya753212.wiki-cms.com](http://larissaspya753212.wiki-cms.com), [atozbookmark.com](http://atozbookmark.com), [honeylbrb861018.slypage.com](http://honeylbrb861018.slypage.com), [sahilbqwc338429.wikinstructions.com](http://sahilbqwc338429.wikinstructions.com), [lexiefjnt160609.iyublog.com](http://lexiefjnt160609.iyublog.com), [jasonphrt594914.azzablog.com](http://jasonphrt594914.azzablog.com), [royjte817011.blog-mall.com](http://royjte817011.blog-mall.com), [marianymaw313137.idblogmaker.com](http://marianymaw313137.idblogmaker.com), [lancexara142269.laowaiblog.com](http://lancexara142269.laowaiblog.com), Disposable vapes

DOWNLOAD the newest Exam4Docs CTAL-TAE PDF dumps from Cloud Storage for free: <https://drive.google.com/open?id=1f8hUyjrUw9U34W3YQJccwLuPGVXOH1S>