

# PL-400인기시험자료, PL-400인기자격증시험대비공부자료

## ■ ERP정보관리사 ※공인자격

회차	인터넷접수	방문접수회종	잔액환불회종	수험료공고	시험일	합격자공고
제1회	22.12.28~1.4	1.4	1.9	1.19	1.28	2.14
제2회	2.22~3.2	3.2	3.6	3.16	3.25	4.11
제3회	4.26~5.3	5.3	5.8	5.18	5.27	6.13
제4회	6.21~6.28	6.28	7.3	7.13	7.22	8.8
제5회	8.23~8.30	8.30	9.4	9.14	9.23	10.10
제6회	10.25~11.1	11.1	11.6	11.16	11.25	12.12

- 시험용 솔루션  
- 다온 iCUBE(전 회사 공동), 명림원 K-System(5월, 11월)

## ■ IEQ(인터넷윤리자격) ※'지도사' 공인자격, '관리사'1급·2급 등록자격

회차	인터넷접수	방문접수회종	잔액환불회종	수험료공고	시험일	합격자공고
제1회	3.3~3.8	3.8	3.13	3.29	4.8	4.27
제2회	9.8~9.13	9.13	9.18	10.4	10.14	11.2

참고: PassTIP에서 Google Drive로 공유하는 무료 2026 Microsoft PL-400 시험 문제집이 있습니다:  
[https://drive.google.com/open?id=13eh4H3oHSO3h8fEg4dbFNKa-BQ\\_YTAnH](https://drive.google.com/open?id=13eh4H3oHSO3h8fEg4dbFNKa-BQ_YTAnH)

PassTIP 에서 제공해드리는 Microsoft인증PL-400시험덤프자료를 구입하시면 퍼펙트한 구매후 서비스를 약속드립니다. PassTIP에서 제공해드리는 덤프는 IT업계 유명인사들이 자신들의 노하우와 경험을 토대로 하여 실제 출제되는 시험문제를 연구하여 제작한 최고품질의 덤프자료입니다. Microsoft인증PL-400시험은PassTIP 표Microsoft인증 PL-400덤프자료로 시험준비를 하시면 시험패스는 아주 간단하게 할 수 있습니다. 구매하기전 PDF버전 무료샘플을 다운받아 공부하세요.

마이크로소프트 PL-400 자격증 시험은 마이크로소프트 파워 플랫폼 개발자 자격증 시험으로도 알려져 있으며, 마이크로소프트 파워 플랫폼 위에 솔루션을 구축하는 개발자들의 기술을 증명하고자 하는 시험입니다. 이 시험은 후보자가 비즈니스 문제를 해결하기 위해 마이크로소프트 파워 앱, 마이크로소프트 파워 오토메이트, 그리고 마이크로소프트 파워 BI를 생성, 사용자 정의, 확장할 수 있는 능력을 측정합니다. 이 자격증 시험은 개발자가 고객 요구 사항을 충족하는 솔루션을 디자인하고 개발하는 능력을 검증합니다.

시험은 온라인으로 진행되며 40-60개의 객관식 문제로 구성되어 있습니다. 시험 시간은 150분이며, 합격 점수는 1000점 중 700점 이상입니다. 시험에 불합격한 경우 24시간 이후에 재응시할 수 있습니다. 그러나 시험을 첫 번째 시도에서 통과할 가능성을 높이기 위해 철저히 준비하는 것이 권장됩니다.

## 100% 합격보장 가능한 PL-400인기시험자료 시험대비자료

인재가 넘치는 IT업계에서 자기의 자리를 지켜나가려면 학력보다 능력이 더욱 중요합니다.고객님의 능력을 증명해주는 수단은 국제적으로 승인받은 IT인증자격증이 아니겠습니까? Microsoft인증 PL-400시험이 어렵다고 하여 두려워 하지 마세요. IT자격증을 취득하려는 분들의 곁에는 PassTIP가 있습니다. PassTIP의Microsoft인증 PL-400시험준비를 하시고 시험패스하여 자격증을 취득하세요. 국제승인 자격증이라 고객님의 경쟁력을 업그레이드 시켜드립니다.

Microsoft PL-400 또는 Microsoft Power Platform Developer Exam은 Power Apps, Power Automate, Power BI 및 Power Virtual Agent를 포함한 Microsoft Power 플랫폼 기술을 사용하여 솔루션 구축에 대한 전문 지식을 시연하려는 전문가를 위해 설계되었습니다. 이 시험은 비즈니스 환경에서 전력 플랫폼 솔루션 개발, 배포 및 관리 경험이있는 개발자를 위한 것입니다.

### 최신 Microsoft Certified: Power Platform Developer Associate PL-400 무료 샘플문제 (Q259-Q264):

#### 질문 # 259

You need to select the appropriate methods using Azure Event Grid.

Which method should you use for each requirement? To answer, drag the appropriate methods to the correct requirements. Each method may be used once, more than once, or not at all. You may need to drag the split bar between panes or scroll to view content.

NOTE: Each correct selection is worth one point.

Sources	Requirement	Method
Event handler	Notify the infrastructure team when a new virtual machine is created.	
Event subscription		
Event sources	Route orders over \$5,000 to the credit department.	
Events		

정답:

설명:

Sources	Requirement	Method
Event handler	Notify the infrastructure team when a new virtual machine is created.	Event handler
Event subscription		
Event sources	Route orders over \$5,000 to the credit department.	Event subscription
Events		

Explanation

Requirement	Method
Notify the infrastructure team when a new virtual machine is created.	Event handler
Route orders over \$5,000 to the credit department.	Event subscription

Box 1: Event handler

An event handler is the place where the event is sent. The handler takes some further action to process the event.

Box 2: Event subscription

Event subscriptions - The endpoint or built-in mechanism to route events, sometimes to more than one handler. Subscriptions are also used by handlers to intelligently filter incoming events.

Reference:

<https://docs.microsoft.com/en-us/azure/event-grid/event-handlers>

<https://docs.microsoft.com/en-us/azure/event-grid/overview>

### 질문 # 260

A travel company plans to track the address of places their clients visit in an entity named Destination.

Client information is captured as contact records. Client records include links to the places that clients visit.

The company must be able to link multiple rating records to the new address record.

You find a custom Rating entity that is incomplete.

You need to expand the Rating entity to include contact, address, and rating information in one place.

Which three actions should you perform? Each correct answer presents part of the solution.

NOTE: Each correct selection is worth one point.

- A. Create a 1:N relationship between the Contact system entity and the Address system entity named Destination.
- B. Create a mapping for the Contact - Rating relationship.
- C. Create a 1:N relationship between the Destination entity and the Rating entity.
- D. Create a mapping for the Destination - Rating relationship.
- E. Create a 1:N relationship between the Address system entity and the Rating entity.
- F. Create a 1:N relationship between the Contact system entity and the Rating entity.

정답: A,D,E

설명:

Explanation/Reference:

<https://docs.microsoft.com/en-us/powerapps/maker/common-data-service/map-entity-fields> Configure business process automation Testlet 1 Case study This is a case study. Case studies are not timed separately. You can use as much exam time as you would like to complete each case. However, there may be additional case studies and sections on this exam. You must manage your time to ensure that you are able to complete all questions included on this exam in the time provided.

To answer the questions included in a case study, you will need to reference information that is provided in the case study. Case studies might contain exhibits and other resources that provide more information about the scenario that is described in the case study. Each question is independent of the other questions in this case study.

At the end of this case study, a review screen will appear. This screen allows you to review your answers and to make changes before you move to the next section of the exam. After you begin a new section, you cannot return to this section.

To start the case study

To display the first question in this case study, click the Next button. Use the buttons in the left pane to explore the content of the case study before you answer the questions. Clicking these buttons displays information such as business requirements, existing environment, and problem statements. If the case study has an All Information tab, note that the information displayed is identical to the information displayed on the subsequent tabs. When you are ready to answer a question, click the Question button to return to the question.

Background

Bellows Sports is the region's newest, largest, and most complete sports complex. The company features baseball and soccer fields and two full-size hockey rinks. The complex provides coaching, recreational leagues, a pro shop, and state-of-the-art customer and player amenities.

The company is organized into the following divisions:

- \* Baseball
- \* Hockey
- \* Soccer

Bellow Sports runs tournaments several times per year. Each tournament runs six weeks.

Current environment

Requirements

Bellow Sports tracks players and events in Microsoft Excel workbooks and uses email to communicate with players, partners, and prospective customers. The company uses a proprietary cloud-based accounting system.

The company relies on referrals from athletes for new business. Bellows uses a third-party marketing company to gather feedback and referrals from athletes. The third-party marketing company uploads a Microsoft Excel file containing lists of potential customers and players to the FTP site that Bellows Sports maintains.

Tournaments

Customer information is stored in the Accounts entity. Each tournament record must list the associated sales representative as the tournament owner. When team members create tournament records they must enter the start date for a tournament. The end date of the tournament must be automatically calculated.

Registration form

You must create a form to allow players to register for tournaments. The registration form must meet the following requirements:

Division	Requirement
Baseball	Capture the age and weight of the player. The height field must not display.
Hockey	Capture the age, height, and weight of the player.
Soccer	Capture the age of the player. The height and weight fields must not display.

\* Each division has tournaments that take place in specific locations. Users must be able to select the division for a tournament location.

\* Information about upcoming tournaments must be pre-located into the registration form when the registration form loads.

\* The form must include a custom button that sends an email confirmation to the player after the player registers.

\* The button must not be visible until after the form is saved.

Security

The company identifies the following job roles:

Role	Tasks
Sales representative	These users will enter data into Dynamics 365 Customer Service.
Intern	These users will create Power Apps apps, and connectors, and create Power Automate flows.
Manager	These users will add users, assign security roles, and manage data storage.

You must grant users the minimum permissions required to perform their job tasks.

Data automation

\* Customer name must be added to Dynamics 365 Finance automatically after it is entered.

\* You must produce a report that details the number of registrations for a day and send the report as a PDF to the management team.

\* You must implement mechanisms to handle all code-related errors.

\* When a customer record is updated, the system must look up the account number for the customer in the accounting system.

\* Referrals must be imported into the system as soon as they are available.

Issues

Apps

\* The captions for the New and Save buttons do not render properly on the form.

\* Interns can create apps but cannot interact with their own data.

Portal

The query for all registered users must return the data categorized by division. Queries must return only the Name and Sport fields.

Queries return all fields. The query is as follows:

```
GET [Organization URI]/api/data/v9.1/accounts?
&$orderby=Name, sport
&$filter=sport ne null
```

Solution checker issues

You run solution checker and observe Plug-in or workflow activity errors in the following code sets:

Set	Code	Error message
Code set 1	<pre> CS101 var columns = new ColumnSet(); CS102 columns.AllColumns = true; CS103 var query = new QueryExpression("account"); CS104 query.ColumnSet = columns; CS105 var results = service.RetrieveMultiple(query); </pre>	il-specify-column
Code Set 2	<pre> CS201 WebRequest request = WebRequest.Create ("https://www.bellows.com/api/stuff"); CS202 HttpWebResponse response = new HttpWebResponse(); CS203 CS204 response = request.GetResponse(); CS205 response.Close(); </pre>	il-turn-off-keepalive

Code

The following code runs when the registration form loads. You must implement a mechanism to handle errors that occur in the code:

```

UpdateRecord.js (Line numbers are included for reference only.)

UR01
UR02 var data =
UR03     {
UR04         "name" : "Updated Account",
            "creditonhold" : true,
            "description" : "This is an account update",
            "revenue" : 10,000,
            "Division" : 2
        }
UR05 . . .
UR06

```

### 질문 # 261

You need to select connectors for the app.

Which types of connectors should you use? To answer, drag the appropriate connectors to the correct requirements. Each connector may be used once, more than once, or not at all. You may need to drag the split bar between panes or scroll to view content.

NOTE: Each correct selection is worth one point.

Connectors	Requirement	Connectors
Create a custom connector.	View full registration records.	<input type="text"/>
Use an AppSource connector.	View customer names.	<input type="text"/>
Use a native application function.	View daily registrations.	<input type="text"/>
Create a connector with a Postman collection.		

정답:

설명:

Statement	Yes	No
If the last name is an alternate key and there are no contacts with the last name Smith, the stored value of the last name is Smith.	<input type="radio"/>	<input checked="" type="radio"/>
If the client number is an alternate key and the client number exists, the stored value of the last name is Smith.	<input checked="" type="radio"/>	<input type="radio"/>
If the last name is an alternate key and there are people who have the last name Smith, the stored value of the last name is Smith.	<input type="radio"/>	<input checked="" type="radio"/>
If the client number is an alternate key and the client number does not exist, the stored value of the last name is Smith.	<input type="radio"/>	<input checked="" type="radio"/>

Explanation

### Requirement



### Connectors

View full registration records.	Create a custom connector.
View customer names.	Use an AppSource connector.
View daily registrations.	Use a native application function.

Box 1: Create a custom connector

A custom connector is a wrapper around a REST API (Logic Apps also supports SOAP APIs) that allows Logic Apps, Power Automate, or Power Apps to communicate with that REST or SOAP API.

Box 2: Use an AppSource connector

You can only retrieve the Customer, UnifiedActivity, and Segments entities through the Power Apps connector. Other entities are shown because the underlying connector supports them through triggers in Power Automate.

Scenario: Customer information is stored in the Accounts entity.

Box 3: Use a native application function

You must produce a report that details the number of registrations for a day and send the report as a PDF to the management team.

Reference:

<https://docs.microsoft.com/en-us/connectors/custom-connectors/>

<https://docs.microsoft.com/en-us/dynamics365/customer-insights/audience-insights/export-power-apps>

### 질문 # 262

You need to select the visualization component.

What should you use? To answer, select the appropriate options in the answer area.

NOTE: Each correct selection is worth one point.

Requirement	Component
Mailing list opt-in/opt-out	<ul style="list-style-type: none"> <li>Flip switch</li> <li>Linear gauge</li> <li>Radial knob</li> <li>Linear slider</li> </ul>
Number of store visits	<ul style="list-style-type: none"> <li>Linear gauge</li> <li>Flip switch</li> <li>Pen control</li> <li>Input mask</li> </ul>
Purpose of visit	<ul style="list-style-type: none"> <li>Linear gauge</li> <li>Flip switch</li> <li>Radial knob</li> <li>Option set</li> </ul>

정답:

설명:

Requirement	Component
Mailing list opt-in/opt-out	<ul style="list-style-type: none"> <li>Flip switch</li> <li>Linear gauge</li> <li>Radial knob</li> <li>Linear slider</li> </ul>
Number of store visits	<ul style="list-style-type: none"> <li>Linear gauge</li> <li>Flip switch</li> <li>Pen control</li> <li>Input mask</li> </ul>
Purpose of visit	<ul style="list-style-type: none"> <li>Linear gauge</li> <li>Flip switch</li> <li>Radial knob</li> <li>Option set</li> </ul>

Explanation

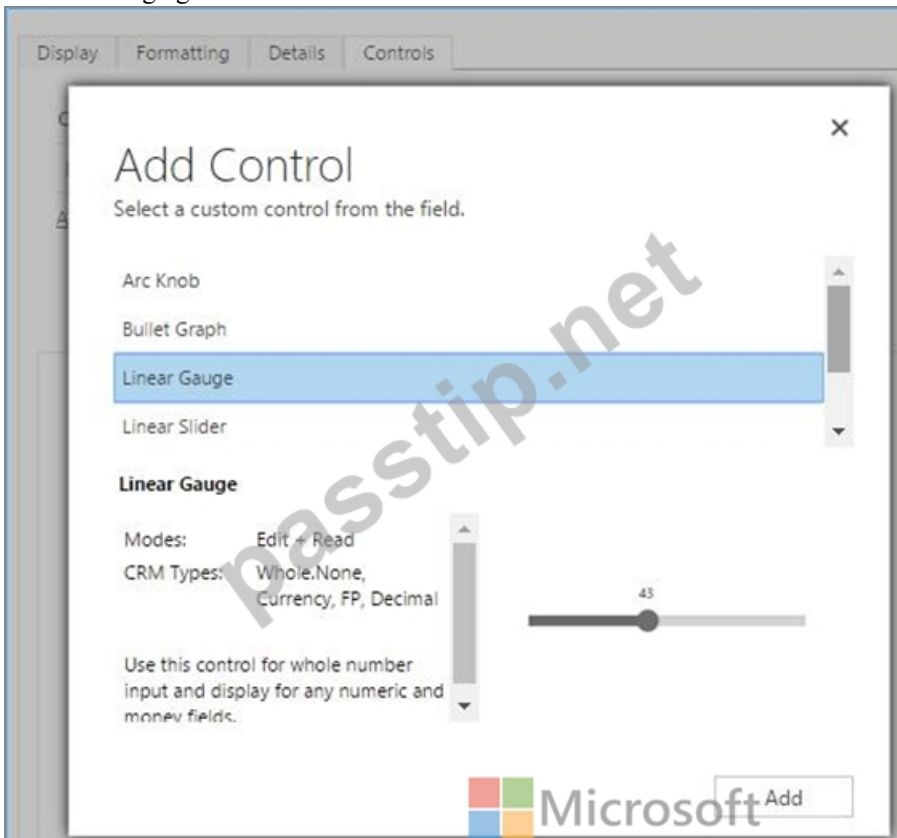
Requirement	Component
Mailing list opt-in/opt-out	<input type="text"/> <ul style="list-style-type: none"> <li>Flip switch</li> <li>Linear gauge</li> <li>Radial knob</li> <li>Linear slider</li> </ul>
Number of store visits	<input type="text"/> <ul style="list-style-type: none"> <li>Linear gauge</li> <li>Flip switch</li> <li>Pen control</li> <li>Input mask</li> </ul>
Purpose of visit	<input type="text"/> <ul style="list-style-type: none"> <li>Linear gauge</li> <li>Flip switch</li> <li>Radial knob</li> <li>Option set</li> </ul>

**Box 1: Flip switch**

The Field Type to use Flip Switch would be 'Two options'.

If you go by UI perspective, Flip switch control- Yes/No (Boolean) options would give the nice field look in the web, mobile app and Tablet. Instead of using check boxes and radio buttons, this control adds a visual effect like the On/Off switch way.

**Box 2: Linear gauge**



**Box 3: Option Set**

Option sets are the ideal choice for offering users a list of defined options for a field selection.

Reference:

<https://www.inogic.com/blog/2018/04/controls-in-dynamics-365-for-mobile-app-flip-switch/>  
<https://community.dynamics.com/365/sales/b/crminogic/posts/new-controls-for-phones-and-tablets-in-dynamics->

**질문 # 263**

The engineering team in a company uses a SharePoint list to manage critical technical issues that are raised by clients. Other departments do not have access to this list. Departments use their own apps for their own processes.

All departments must be able to see the total number of client issues at any point in time.

You need to design a component that can be used in all the departmental apps to display the total number of client issues in bold colors.

Which four actions should you perform in sequence? To answer, move the appropriate actions from the list of actions to the answer area and arrange them in the correct order.

The screenshot shows a configuration interface with two main sections: 'Actions' and 'Answer area'. The 'Actions' list contains six items:

- Create a connection to the engineering issues list and retrieve the total number of critical issues.
- Create an output parameter and set the value of the parameter to the total number of critical issues.
- Create and format a label to display the total number of critical issues.
- Import the counter component in the other apps from the first department app.
- Display the counter output parameter in the department app.
- Create a new component in the department app.

The 'Answer area' is currently empty. A Microsoft logo is visible in the bottom right corner of the interface.

**정답:**

**설명:**

The screenshot shows the same configuration interface as above, but with four actions moved from the 'Actions' list to the 'Answer area' in the following order:

- Create a connection to the engineering issues list and retrieve the total number of critical issues.
- Create an output parameter and set the value of the parameter to the total number of critical issues.
- Create a new component in the department app.
- Create and format a label to display the total number of critical issues.

The remaining two actions in the 'Actions' list are 'Import the counter component...' and 'Display the counter output parameter...'. A Microsoft logo is visible in the background.

**Explanation**

To design a component that can be used in all the departmental apps to display the total number of client issues in bold colors, you should perform the following four actions in sequence:

Create a connection to the engineering issues list and retrieve the total number of critical issues.

Create an output parameter and set the value of the parameter to the total number of critical issues.

Create a new component in the first department app.

Create and format a label to display the total number of critical issues, and display the counter output parameter in the department app.

**질문 # 264**

.....

**PL-400인기자격증 시험대비 공부자료 :** <https://www.passtip.net/PL-400-pass-exam.html>

- 시험패스에 유효한 PL-400인기시험자료 최신버전 덤프데모 문제 다운  무료로 쉽게 다운로드하려면  [www.koreadumps.com](http://www.koreadumps.com) 에서 ( PL-400 ) 를 검색하세요PL-400유효한 공부자료
- PL-400퍼펙트 공부  PL-400퍼펙트 덤프 최신버전  PL-400최신버전 시험덤프자료  무료 다운로드를 위해 지금  [www.itdumpskr.com](http://www.itdumpskr.com) 에서  PL-400 검색PL-400시험패스 가능한 인증덤프자료
- PL-400인기시험자료 덤프로 시험에 도전  [ [www.passtip.net](http://www.passtip.net) ]은“PL-400”무료 다운로드를 받을 수 있는 최고의 사이트입니다PL-400최신버전 시험덤프자료
- PL-400퍼펙트 공부  PL-400시험대비 덤프공부자료  PL-400완벽한 덤프공부자료  > [www.itdumpskr.com](http://www.itdumpskr.com) <에서  PL-400 를 검색하고 무료 다운로드 받기PL-400유효한 공부자료

- 도비 Microsoft PL-400 시험 □ 지금 ▶ [www.exampassdump.com](http://www.exampassdump.com) ◀에서 ▶ PL-400 □를 검색하고 무료로 다운로드하세요 PL-400최고품질 시험덤프 공부자료
- PL-400덤프샘플문제 □ PL-400시험패스 가능한 인증덤프자료 👉 PL-400최고품질 시험덤프 공부자료 ⇨ 검색만 하면 □ [www.itdumpskr.com](http://www.itdumpskr.com) □에서 ( PL-400 ) 무료 다운로드 PL-400완벽한 덤프공부자료
- 시험패스에 유효한 PL-400인기시험자료 최신버전 덤프데모 문제 다운 ↘ 무료로 쉽게 다운로드하려면 ▶▶ [www.koreadumps.com](http://www.koreadumps.com) □에서 { PL-400 }를 검색하세요 PL-400덤프샘플문제
- 시험패스 가능한 PL-400인기시험자료 덤프 최신문제 □ 무료로 쉽게 다운로드하려면 ▶▶ [www.itdumpskr.com](http://www.itdumpskr.com) □□에서 ▶ PL-400 □를 검색하세요 PL-400퍼펙트 최신 덤프
- PL-400인기시험자료 완벽한 덤프데모문제 □ { [www.dumpsttop.com](http://www.dumpsttop.com) }의 무료 다운로드 □ PL-400 □페이지가 지금 열립니다 PL-400퍼펙트 공부
- PL-400최신 덤프문제 □ PL-400최신버전 시험덤프자료 □ PL-400유효한 공부자료 □ 지금 ▶ [www.itdumpskr.com](http://www.itdumpskr.com) □에서 □ PL-400 □를 검색하고 무료로 다운로드하세요 PL-400퍼펙트 덤프 최신버전
- 시험준비에 가장 좋은 PL-400인기시험자료 최신버전 문제 □ ▶▶ [www.dumpsttop.com](http://www.dumpsttop.com) □에서 ✨ PL-400 □ ✨ □를 검색하고 무료 다운로드 받기 PL-400퍼펙트 덤프 최신버전
- [tayamsdb111745.shivawiki.com](http://tayamsdb111745.shivawiki.com), [dommayyay936530.angelinsblog.com](http://dommayyay936530.angelinsblog.com), [nikolasgncs751482.signalwiki.com](http://nikolasgncs751482.signalwiki.com), [lawsonckcz322341.buscawiki.com](http://lawsonckcz322341.buscawiki.com), [lewysqlax463299.kylieblog.com](http://lewysqlax463299.kylieblog.com), [hannacdrz273450.wikinewspaper.com](http://hannacdrz273450.wikinewspaper.com), [techonpage.com](http://techonpage.com), [neveyjyr432763.gynoblog.com](http://neveyjyr432763.gynoblog.com), [thebookmarklist.com](http://thebookmarklist.com), [kaitlynwczv133611.anchor-blog.com](http://kaitlynwczv133611.anchor-blog.com), Disposable vapes

참고: PassTIP에서 Google Drive로 공유하는 무료, 최신 PL-400 시험 문제집이 있습니다: [https://drive.google.com/open?id=13eh4H3oHSO3h8fEg4dbFNKa-BQ\\_YTAnH](https://drive.google.com/open?id=13eh4H3oHSO3h8fEg4dbFNKa-BQ_YTAnH)