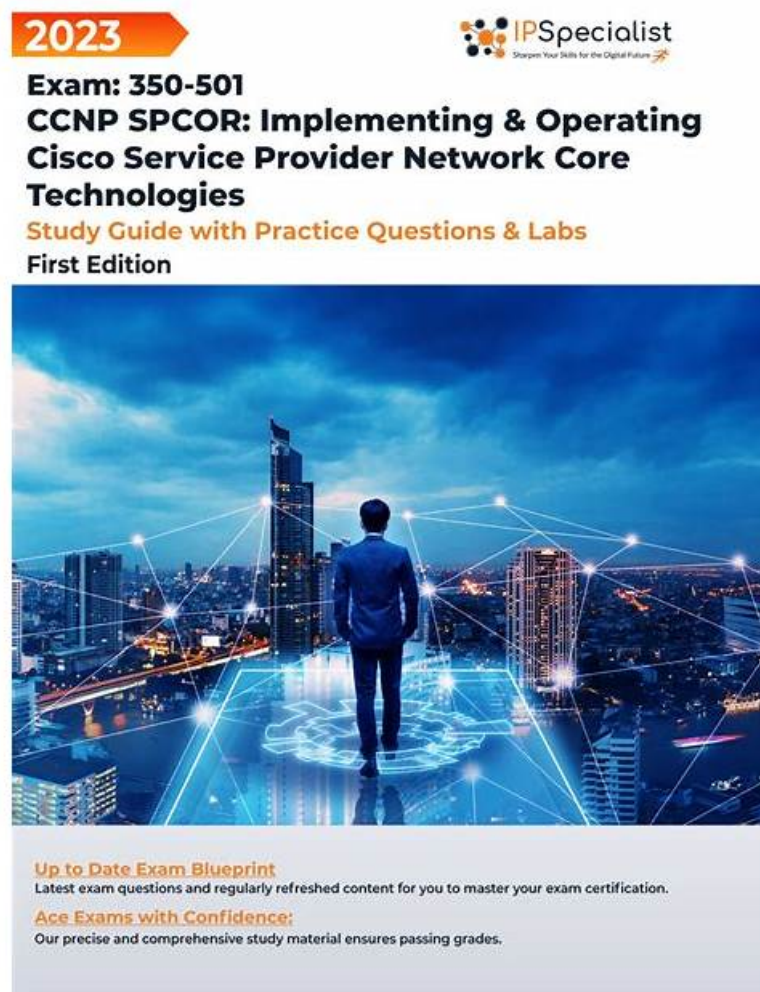


350-501 Study Materials - 350-501 Quiz Bootcamp & 350-501 Quiz Materials



P.S. Free 2025 Cisco 350-501 dumps are available on Google Drive shared by ExamBoosts: <https://drive.google.com/open?id=1BU19xxZi3Lj3jQRA1fSLSQ1tAYoMIP>

While attempting the exam, take heed of the clock ticking, so that you manage the Cisco 350-501 Questions in a time-efficient way. Even if you are completely sure of the correct answer to a question, first eliminate the incorrect ones, so that you may prevent blunders due to human error.

Cisco 350-501 Certification Exam is a comprehensive exam that covers a wide range of topics. 350-501 exam is divided into several sections, each focusing on a specific technology. 350-501 exam includes questions on Routing protocols, such as OSPFv2, OSPFv3, IS-IS, and BGP. MPLS topics include MPLS LDP, MPLS VPNs, and MPLS TE. Quality of Service (QoS) topics include classification and marking, congestion management and avoidance, and traffic shaping and policing. Network automation topics include device programmability, automation tools, and APIs. Lastly, Security protocols include IPsec, SSL/TLS, and IKEv2.

>> Latest 350-501 Dumps Sheet <<

Free PDF 2025 Cisco Reliable 350-501: Latest Implementing and Operating Cisco Service Provider Network Core Technologies Dumps Sheet

The ExamBoosts Cisco 350-501 exam dumps are ready for quick download. Just choose the right ExamBoosts Cisco 350-501 exam questions format and download it after paying an affordable ExamBoosts Implementing and Operating Cisco Service Provider

Network Core Technologies (350-501) practice questions charge and start this journey. Best of luck in Cisco 350-501 exam and career!!!

Cisco 350-501 certification exam is designed for professionals who want to excel in the field of service provider network technologies. 350-501 exam is an excellent way for individuals to demonstrate their skills and knowledge in implementing and operating Cisco Service Provider Network Core Technologies. Implementing and Operating Cisco Service Provider Network Core Technologies certification focuses on advanced-level skills required for implementation, configuration, and troubleshooting of service provider network infrastructure and services.

Cisco 350-501 certification exam is designed for network professionals who want to prove their expertise in implementing and operating Cisco Service Provider Network Core Technologies. 350-501 Exam Tests the candidate's knowledge and skills related to the implementation and operation of core service provider network technologies, including network architecture, virtualization, automation, and service orchestration. Candidates who pass 350-501 exam will demonstrate their ability to configure, manage, and troubleshoot complex service provider network infrastructures, and will be able to design and implement scalable and reliable solutions to meet the needs of service provider customers.

Cisco Implementing and Operating Cisco Service Provider Network Core Technologies Sample Questions (Q479-Q484):

NEW QUESTION # 479

Refer to the exhibit:



```
classmap match-any class1
match protocol ipv4
match qos-group 4
```

A network engineer is implementing QoS services. Which two statements about the QoS-group keyword on Cisco IOS XR 3re true? (Choose two)

- A. QoS group marking occurs on the ingress
- B. It cannot be used with priority traffic class
- C. The QoS group numbering corresponds to priority level
- D. It marks packets for end to end QoS pokey enforcement across the network
- E. QoS group can be used in fabric QoS policy as a match criteria

Answer: A,E

Explanation:

https://www.cisco.com/c/en/us/td/docs/routers/ncs6000/software/ncs6k_r6-1/qos/configuration/guide/b-qos-cg-ncs6k-61x/b-qos-cg-ncs6k-61x_chapter_0110.html Fabric QoS policy class maps are restricted to matching a subset of these classification options:

precedence

dscp

qos-group

discard-class

mpls experimental topmost

NEW QUESTION # 480

Refer to the exhibit. Routers R1 and R2 are connected via a serial link and use the IS-IS routing protocol for route exchange. After a configuration change on R2, IS-IS connectivity is interrupted.

A network engineer confirmed that the interfaces are in the UP state and connectivity exists between the two routers. Which two actions must the engineer perform to resolve the problem?

(Choose two.)

```

Sep 30 03:12:33: ISIS-Adj: Rec serial ITH from *HDLC* (Serial1/1), cir type L1L2
Sep 30 03:12:33: ISIS-Adj: rcvd state DOWN, old state UP, new state INIT
Sep 30 03:12:33: ISIS-Adj: Action = GOING DOWN
Sep 30 03:12:33: %CLNS-5-ADJCHANGE: ISIS: Adjacency to R1 (Serial1/1) Down, nes
Sep 30 03:12:33: ISIS-Adj: L2 adj count 0
Sep 30 03:12:33: ISIS-Adj: Sending serial ITH on Serial1/1, length 1699
Sep 30 03:12:41: ISIS-Adj: Rec serial ITH from *HDLC* (Serial1/1), cir type L1L2
Sep 30 03:12:41: ISIS-Adj: rcvd state DOWN, old state DOWN, new state INIT
Sep 30 03:12:41: ISIS-Adj: Action = GOING UP, new type = L2
Sep 30 03:12:41: ISIS-Adj: New serial adjacency
Sep 30 03:12:41: ISIS-Adj: Sending serial ITH on Serial1/1, length 1699
Sep 30 03:12:47: ISIS-Adj: Rec serial ITH from *HDLC* (Serial1/1), cir type L1L2
Sep 30 03:12:47: ISIS-Adj: rcvd state DOWN, old state INIT, new state INIT
Sep 30 03:12:47: ISIS-Adj: Action = GOING UP, new type = L2
Sep 30 03:12:47: ISIS-Adj: Sending serial ITH on Serial1/1, length 1699
Sep 30 03:12:47: ISIS-Adj: Sending serial ITH on Serial1/1, length 1699

```

- A. Change R2 to an IS-IS Level 1 router
- B. Enable hello packet padding globally on R1
- C. Change the MTU to 1500 bytes on R2
- D. Disable padding for hello packets under the serial interface on R2
- E. Change the hello interface timer to 10 seconds on R1

Answer: C,D

Explanation:

<https://www.cisco.com/c/en/us/support/docs/ip/integrated-intermediate-system-to-intermediate-system-is-is/119399-technote-is-is-00.html> The MTU on the serial interfaces for the routers R1 and R2 are the default 1,500 bytes.

The IS-IS adjacency fails because the IS-IS Hello packets are 1,499 bytes in size. The MPLS network only allows 1,500-byte packets, minus eight bytes (two MPLS labels for the MPLS service), which equals 1,492 bytes (the packet size that is allowed to pass through). For transport of L2 over MPLS, the size of the L2 header must be subtracted from the 1,492 bytes that result as well.

NEW QUESTION # 481

Refer to the exhibit:

```

R1
router isis
 net 49.0012.1111.1111.1111.00
 is-type level-1
 area-password cisco
R2
router isis
 net 49.0022.1111.1111.1112.00
 is-type level-1-2
 area-password cisco

```

What is the effect of this configuration?

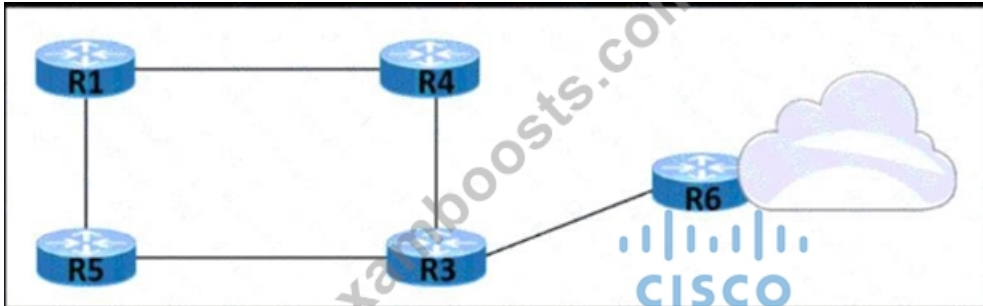
- A. The two routers fail to form a neighbor relationship because they have different IS-IS area types.
- B. The two routers fail to form a neighbor relationship because their system IDs are different.

- C. The two routers successfully form a neighbor relationship
- D. The two routers fail to form a neighbor relationship because the authentication configuration is missing

Answer: C

NEW QUESTION # 482

Refer to the exhibit. An organization's network recently experienced several significant outages due to device failures. The network administrator just moved the network devices to a new central data center, and packets are switched using labels. The administrator is now implementing NSF on the network to reduce potential risk factors in the event of another outage. Which task must the administrator perform on each router as part of the process?



- A. Implement MPLS to forward packets while the RIB updates after a failover.
- B. Copy the router's existing state information and share the file with its peers to enable BGP soft resets
- C. Implement Graceful Restart to mitigate the delay in MPLS LDP synchronization when the IGP starts up.
- D. Remove route filtering to speed repopulation of the link-state database

Answer: C

NEW QUESTION # 483

Refer to the exhibit.

```
!
configure terminal
ip cef distributed
interface gigabitethernet 1/0
ip verify unicast reverse-path 12
!
```

Which show command should be implemented to display per-interface statistics about uRPF drops and suppressed drops?

- A. show ip interface
- B. show ip traffic
- C. show cef interface
- D. show ip interface brief

Answer: A

NEW QUESTION # 484

.....

350-501 Regualer Update: <https://www.examboosts.com/Cisco/350-501-practice-exam-dumps.html>

- Free PDF Quiz Cisco - 350-501 - Latest Implementing and Operating Cisco Service Provider Network Core Technologies Dumps Sheet □ Search for □ 350-501 □ and download it for free immediately on □ www.getvalidtest.com □ □ Valid 350-501 Exam Notes
- Free PDF Quiz 350-501 - Fantastic Latest Implementing and Operating Cisco Service Provider Network Core Technologies Dumps Sheet □ Open ► www.pdfvce.com □ enter ► 350-501 ◀ and obtain a free download □ Lab 350-501 Questions
- 350-501 Certification □ Authorized 350-501 Exam Dumps □ 350-501 Flexible Learning Mode □ Search for □ 350-501 □ and obtain a free download on 「 www.testsimulate.com 」 □ Premium 350-501 Files
- Reliable 350-501 Exam Sims □ Premium 350-501 Files □ Reliable 350-501 Test Simulator □ Search for [350-501] and download it for free immediately on ☀ www.pdfvce.com □ ☀ □ □ Authorized 350-501 Exam Dumps
- Lab 350-501 Questions □ Reliable 350-501 Exam Sims □ 350-501 New Test Bootcamp □ Search on □ www.prep4away.com □ for “350-501 ” to obtain exam materials for free download □ 350-501 Valid Test Duration
- Proven and Instant Method to Pass Cisco 350-501 Exam □ Open ➡ www.pdfvce.com □ enter ➡ 350-501 □ □ □ and obtain a free download □ Latest 350-501 Exam Question
- Free PDF Quiz Cisco - 350-501 - Latest Implementing and Operating Cisco Service Provider Network Core Technologies Dumps Sheet □ Easily obtain free download of ➡ 350-501 □ by searching on □ www.torrentvalid.com □ * New 350-501 Exam Review
- Free PDF Quiz Cisco - 350-501 - Latest Implementing and Operating Cisco Service Provider Network Core Technologies Dumps Sheet □ Go to website ➡ www.pdfvce.com □ open and search for ► 350-501 □ to download for free □ □ Premium 350-501 Files
- Latest 350-501 Dumps Sheet | Latest 350-501 Regualer Update: Implementing and Operating Cisco Service Provider Network Core Technologies □ Open website (www.pass4leader.com) and search for ➡ 350-501 □ for free download □ Lab 350-501 Questions
- Latest 350-501 Dumps Book □ Reliable 350-501 Test Simulator □ Latest 350-501 Dumps Book ↔ Easily obtain ☀ 350-501 □ ☀ □ for free download through { www.pdfvce.com } □ Lab 350-501 Questions
- Excellent Cisco Latest Dumps Sheet – 100% Pass-Rate 350-501 Regualer Update □ Easily obtain free download of { 350-501 } by searching on ➡ www.examsreviews.com □ □ Exam 350-501 Collection
- www.stes.tyc.edu.tw, chloeja894.designertoblog.com, www.xiaodingdong.store, www.stes.tyc.edu.tw, www.notebook.ai, bbs.3927dj.com, www.stes.tyc.edu.tw, www.stes.tyc.edu.tw, myportal.utt.edu.tt, myportal.utt.edu.tt, myportal.utt.edu.tt, myportal.utt.edu.tt, myportal.utt.edu.tt, myportal.utt.edu.tt, myportal.utt.edu.tt, www.stes.tyc.edu.tw, Disposable vapes

BONUS!!! Download part of ExamBoosts 350-501 dumps for free: <https://drive.google.com/open?id=1BU19xxZ32Lj3jQRA1fSLSQ1tAYoMIP>