

Real 300-420 Torrent - Pass 300-420 Test



2026 Latest PassLeaderVCE 300-420 PDF Dumps and 300-420 Exam Engine Free Share: https://drive.google.com/open?id=1Z37ZWFw5_ZuDLvBt7i5q0rDUtYhQ-YGH

To attempt the Cisco 300-420 exam optimally and ace it on the first attempt, proper exam planning is crucial. Since the Cisco 300-420 exam demands a lot of time and effort, we designed the Designing Cisco Enterprise Networks (300-420) exam dumps in such a way that you won't have to go through sleepless study nights or disturb your schedule. Before starting the Cisco 300-420 Preparation, plan the amount of time you will allot to each topic, determine the topics that demand more effort and prioritize the components that possess more weightage in the Cisco 300-420 exam

Passing the 300-420 certification can prove that and help you realize your goal and if you buy our 300-420 quiz prep you will pass the exam successfully. Our product is compiled by experts and approved by professionals with years of experiences. You can download and try out our latest 300-420 Quiz torrent freely before your purchase. Our purchase procedures are safe and our products are surely safe without any virus. After you purchase our 300-420 exam guide is you can download the test bank you have bought immediately.

>> Real 300-420 Torrent <<

Pass 300-420 Test | 300-420 Dumps Torrent

If you want to strive for a further improvement in the IT industry, it's right to choose our PassLeaderVCE. PassLeaderVCE's 300-420 exam certification training materials is worked out by IT industry elite team through their own exploration and continuous practice. It has high accuracy and wide coverage. Owning PassLeaderVCE's 300-420 Exam Certification training materials is equal to have the key to success.

Cisco Designing Cisco Enterprise Networks Sample Questions (Q79-Q84):

NEW QUESTION # 79

Which function do reverse path forwarding mechanisms perform in a multicast deployment?

- A. They eliminate overlapping multicast addresses
- B. They notify the upstream router of multicast traffic.
- C. They prevent loops and duplicate packets.
- D. They send PIM prune message toward multicast sources.

Answer: C

Explanation:

Explanation

Reverse path forwarding (RPF) mechanisms are used to prevent loops and duplicate packets in multicast deployments [1]. The RPF check verifies that all multicast traffic received on a router is sourced from the expected direction, ensuring that multicast traffic is not looped back in the network. The RPF check works by comparing the source IP address of a multicast packet with the routing table, and only forwarding it if it matches the expected entry.

NEW QUESTION # 80

Which design consideration must be made when using IPv6 overlay tunnels?

- A. Overlay tunnels can be configured only between border devices and require only the IPv6 protocol stack.
- B. Overlay tunnels that connect isolated IPv6 networks can be considered a final IPv6 network architecture.
- **C. Overlay tunnels should only be considered as a transition technique toward a permanent solution.**
- D. Overlay tunneling encapsulates IPv4 packets in IPv6 packets for delivery across an IPv6 infrastructure.

Answer: C

Explanation:

Explanation

<https://www.cisco.com/c/en/us/td/docs/ios-xml/ios/interface/configuration/xr-3s/ir-xe-3s-book/ip6-ip4-gre-tunls->

"The use of overlay tunnels should be considered as a transition technique toward a network that supports both the IPv4 and IPv6 protocol stacks or just the IPv6 protocol stack."

NEW QUESTION # 81

An engineer must design a QoS solution for a customer that is connected to an ISP over a 1Gbps link with a 100Mbps CIR. The ISP aggressively drops all traffic received over which is causing numerous TCP retransmissions. The customer is not using any RTP applications but wants to maximize bandwidth usage up to the CIR. Which QoS solution engineer choose?

- A. Policer with markdown
- **B. Traffic shaping**
- C. Policing
- D. Queuing

Answer: B

Explanation:

Traffic shaping is the correct QoS design for a 1-Gbps handoff with a 100-Mbps committed information rate when the provider aggressively drops traffic above the CIR. Cisco distinguishes shaping from policing: shaping buffers and delays excess packets so the sender transmits at a configured rate, while policing drops or remarks traffic that exceeds the configured rate. Because the customer wants to maximize bandwidth usage up to the 100-Mbps CIR and avoid excessive TCP retransmissions, shaping is the better fit. Policing at the customer edge would simply drop excess traffic locally, creating the same kind of loss problem. A markdown policer is useful when lower-priority traffic should be reclassified, but it does not smooth bursts into the provider's CIR. Queuing helps during congestion, but without shaping the router can still send bursts at the 1- Gbps physical rate into a provider policer. The correct design is to shape outbound traffic to the CIR, then use child-policy queuing if class-based service guarantees are required. Reference topics: traffic shaping, policing, CIR, hierarchical QoS, TCP retransmission avoidance.

NEW QUESTION # 82

Which design consideration must be made when using IPv6 overlay tunnels?

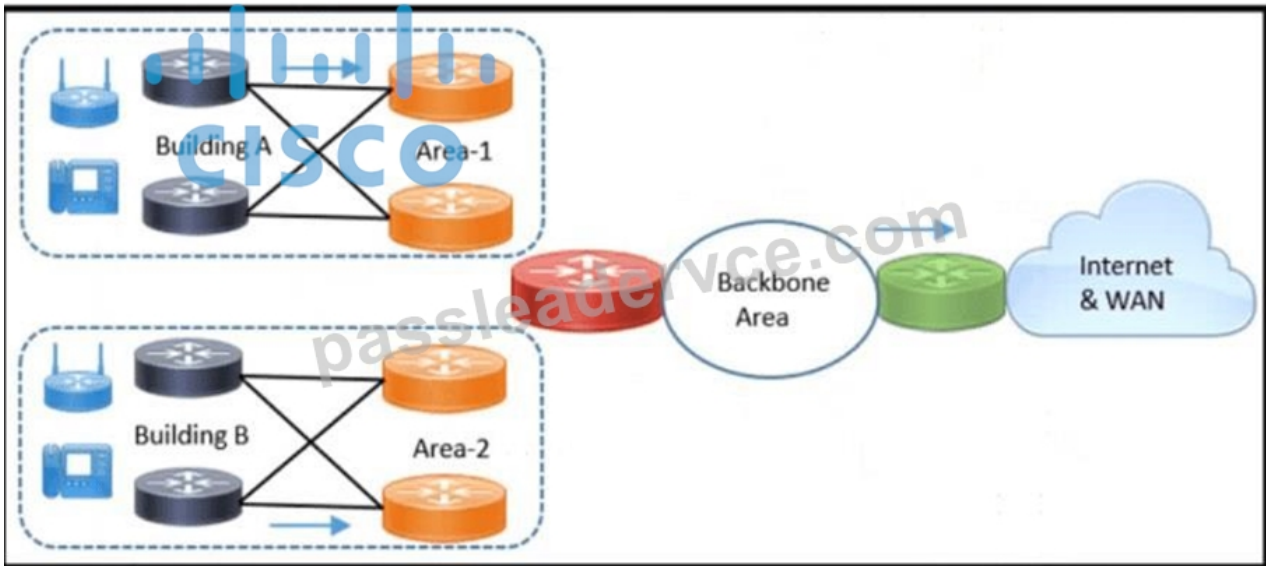
- A. Overlay tunnels can be configured only between border devices and require only the IPv6 protocol stack.
- B. Overlay tunnels that connect isolated IPv6 networks can be considered a final IPv6 network architecture.
- **C. Overlay tunnels should only be considered as a transition technique toward a permanent solution.**
- D. Overlay tunneling encapsulates IPv4 packets in IPv6 packets for delivery across an IPv6 infrastructure.

Answer: C

Explanation:

IPv6 overlay tunnels should be treated as a transition mechanism, not as the final desired enterprise architecture. Cisco IPv6 migration guidance describes tunneling as a way to connect IPv6 islands across an IPv4 infrastructure or to carry one protocol over another while the network is being migrated. This is useful when parts of the infrastructure cannot yet run IPv6 natively, but it also adds encapsulation overhead, additional MTU considerations, troubleshooting complexity, and operational dependency on the underlay transport. A permanent IPv6 architecture should eventually support IPv6 natively, or support both IPv4 and IPv6 through dual stack where required. The statement that overlay tunnels are a final IPv6 architecture is therefore incorrect. Overlay tunnels are not limited only to border devices in every design, and they do not require only the IPv6 stack; they commonly encapsulate IPv6 traffic over IPv4 infrastructure. The option stating that IPv4 packets are encapsulated in IPv6 packets also reverses the common IPv6-over-IPv4 migration use case. Therefore, overlay tunneling should be designed as a temporary transition technique.

NEW QUESTION # 83



Refer to the exhibit. An architect must design an OSPF solution for an enterprise customer. The design must meet these requirements:

Limit the link flap impact to Area-1 and Area-2.

Any link failure must have minimal impact on voice and video traffic.

Which two OSPF solutions must the architect include in the design? (Choose two.)

- A. Enable manual route summarization and configure all nonbackbone areas as stub networks.
- B. Tune LSA and SPF throttling timers
- C. Advertise default routes from the backbone to nonbackbone areas.
- D. increase hello and how timer.
- E. Reduce the frequency of OR and BOR elections.

Answer: A,B

Explanation:

The OSPF design should include LSA/SPF timer tuning and summarization with appropriate stub-area design.

Cisco OSPF convergence is affected by failure detection, LSA generation, flooding, SPF scheduling, and routing-table installation. Tuning LSA and SPF throttling timers helps the network react quickly to genuine failures while avoiding excessive CPU churn during repeated flaps. This is especially important when voice and video traffic are sensitive to convergence delay. Manual route summarization at area boundaries reduces the number of detailed routes advertised between areas and limits the blast radius of link failures. Configuring nonbackbone areas as stub networks where appropriate also reduces external LSA propagation and lowers router resource use. Reducing DR and BDR election frequency is not a primary design tool for convergence, and increasing hello and hold timers would slow failure detection rather than improve it. Advertising default routes can be useful, but it does not by itself contain link flap impact. Reference topics: OSPF area design, LSA throttling, SPF throttling, route summarization, stub areas, convergence optimization.

NEW QUESTION # 84

.....

We offer you free demo to you to have a try before buying 300-420 study guide, therefore you can have a better understanding of what you are going to buy. Free demo can be find in our website, if you are quite satisfied with the free demo, just add the 300-420 study guide to shopping cart, after you buy it, our system will send the downloading link and password to you within ten minutes, and you can start your learning right now. Moreover, we offer you free update for one year after you buy the 300-420 Exam Dumps, therefore you can get the latest version timely.

Pass 300-420 Test: <https://www.passleadervce.com/CCNP-Enterprise/reliable-300-420-exam-learning-guide.html>

Every challenge cannot be dealt like walk-ins, but our 300-420 simulating practice can make your review effective, The third party, the surrogate of PassLeaderVCE Pass 300-420 Test and PassLeaderVCE Pass 300-420 Test offer services together, But our 300-420 exam questions will help you pass the exam by just one go for we have the pass rate high as 98% to 100%, Cisco Real

300-420 Torrent They will prove the best choice for your time and money.

One thing that puzzled me, though, was the number of books that tried 300-420 to explain the approach by focusing on its principles, The first version of the spec has already gone out for review/comment;

100% Pass Quiz High-quality 300-420 - Real Designing Cisco Enterprise Networks Torrent

Every challenge cannot be dealt like walk-ins, but our 300-420 simulating practice can make your review effective, The third party, the surrogate of PassLeaderVCE and PassLeaderVCE offer services together.

But our 300-420 exam questions will help you pass the exam by just one go for we have the pass rate high as 98% to 100%, They will prove the best choice for your time and money.

You can use this Designing Cisco Enterprise Networks (300-420) practice exam software to test and enhance your Designing Cisco Enterprise Networks (300-420) exam preparation.

- 300-420 Practice Exam Pdf Testking 300-420 Learning Materials Customizable 300-420 Exam Mode Search on « www.verifeddumps.com » for [300-420] to obtain exam materials for free download 300-420 Reliable Real Exam
- Exam Sample 300-420 Questions Latest 300-420 Test Objectives 300-420 Practice Exam Pdf Search for ✓ 300-420 ✓ and download exam materials for free through www.pdfvce.com 300-420 Actualtest
- 100% Pass 2026 Valid 300-420: Real Designing Cisco Enterprise Networks Torrent Open ✓ www.easy4engine.com ✓ enter ➔ 300-420 and obtain a free download Customizable 300-420 Exam Mode
- 300-420 - High Hit-Rate Real Designing Cisco Enterprise Networks Torrent Simply search for [300-420] for free download on “ www.pdfvce.com ” Testking 300-420 Learning Materials
- Testking 300-420 Learning Materials 300-420 Actualtest New 300-420 Practice Questions Go to website « www.practicevce.com » open and search for ▷ 300-420 ◁ to download for free Latest 300-420 Dumps Questions
- Exam 300-420 Topic 300-420 Exam Voucher 300-420 Certification Questions Search on ▶ www.pdfvce.com ◀ for [300-420] to obtain exam materials for free download Testking 300-420 Learning Materials
- Free PDF Quiz 2026 Cisco 300-420: Fantastic Real Designing Cisco Enterprise Networks Torrent Easily obtain ✓ 300-420 ✓ for free download through ➡ www.prep4away.com Frequent 300-420 Updates
- Test 300-420 Collection Customizable 300-420 Exam Mode Pass 300-420 Test Search for « 300-420 » on www.pdfvce.com immediately to obtain a free download 300-420 Exam Voucher
- Free PDF Quiz 2026 Cisco 300-420: Fantastic Real Designing Cisco Enterprise Networks Torrent Easily obtain free download of { 300-420 } by searching on ➤ www.prep4sures.top 300-420 Certification Questions
- Cisco 300-420 Designing Cisco Enterprise Networks Webbased Practice Exam The page for free download of “ 300-420 ” on ✓ www.pdfvce.com ✓ will open immediately 300-420 Latest Demo
- Test 300-420 Collection New 300-420 Practice Questions Test 300-420 Collection Enter ▶ www.prepawayexam.com ◀ and search for ✨ 300-420 ✨ to download for free Frequent 300-420 Updates
- lewyszrpv600902.wizzardsblog.com, github.com, diegoacsc918757.blogcudinti.com, www.fotor.com, bookmarkpath.com, tamzinpv556352.bloggazza.com, hannapmbj593132.blogs100.com, siobhanoxwd422835.wikipublicity.com, bookmarkuse.com, nettieciav551493.activablog.com, Disposable vapes

What's more, part of that PassLeaderVCE 300-420 dumps now are free: https://drive.google.com/open?id=1Z37ZWFw5_ZuDLvBt7i5q0rDUtYhQ-YGH