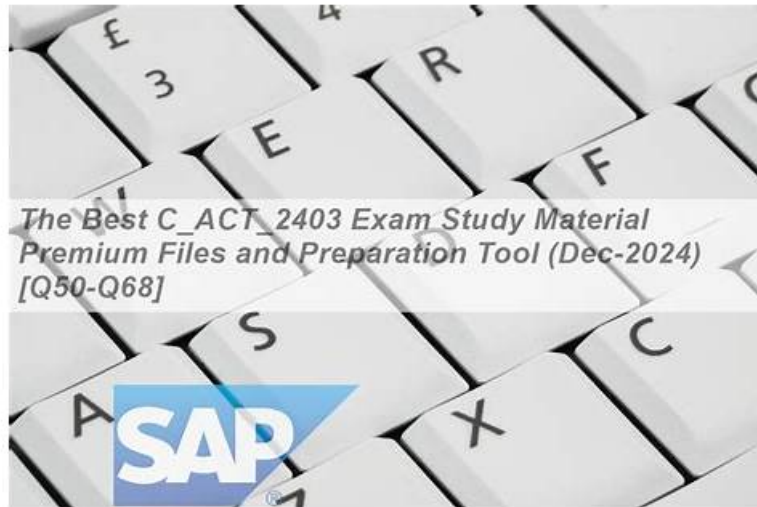


Reliable C_ADBTP Practice Materials - C_ADBTP Real Study Guide - TestPassKing



A lot of office workers in their own professional development encounter bottleneck and begin to choose to continue to get the test C_ADBTP certification to the school for further study. We all understand the importance of education, and it is essential to get the C_ADBTP certification. Learn the importance of self-evident, and the stand or fall of learning outcome measure, in reality of hiring process, for the most part through your grades of high and low, as well as you acquire the qualification of how much remains. Therefore, the C_ADBTP practice materials can give users more advantages in the future job search, so that users can stand out in the fierce competition and become the best.

If you failed to do so then the customer gets a full refund from TestPassKing according to the terms and conditions. Users can start using SAP C_ADBTP instantly after purchasing it. Three C_ADBTP Exam Questions format is provided to customers so that they can access the Administrating SAP Business Technology Platform(C_ADBTP_2601) (C_ADBTP) prep material in every possible way according to their needs.

>> C_ADBTP New Braindumps Ebook <<

2026 Perfect C_ADBTP New Braindumps Ebook | Administrating SAP Business Technology Platform(C_ADBTP_2601) 100% Free Actual Exams

In order to pass the exam and fight for a brighter future, these people who want to change themselves need to put their ingenuity and can do spirit to work. More importantly, it is necessary for these people to choose the convenient and helpful C_ADBTP study materials as their study tool in the next time. Because their time is not enough to prepare for the exam, and a lot of people have difficulty in preparing for the exam, so many people who want to pass the C_ADBTP Exam and get the related certification in a short time have to pay more attention to the study materials.

SAP Administrating SAP Business Technology Platform(C_ADBTP_2601) Sample Questions (Q10-Q15):

NEW QUESTION # 10

SIMULATION

Create Directories and Subaccounts

In a global account for SAP Business Technology Platform (BTP), create a hierarchy of subaccounts using directories.

Task 1: Create Directories

In your SAP BTP cockpit, create the directory Americas (Description: Americas Accounts) with your global account as the parent.

Create the directory Eurasia (Description: Eurasia Accounts) with your global account as the parent.

Create the directory Partner (Description: Partner Accounts) with the Americas directory as the parent. Add the label access with value external.

Create the directory Human Resources (Description: Human Resources Accounts) with the Eurasia directory as the parent. Add the label access with value internal.

Answer:

Explanation:

See the Explanation below for complete solution

Explanation:

Task 1: Create Directories

You need to create these directories:

Americas

Eurasia

Partner under Americas with label access=external

Human Resources under Eurasia with label access=internal

Before You Start

Log in to the SAP BTP Cockpit.

Make sure you are inside the correct Global Account.

Open the left-side navigation menu.

Why this is important:

All directories in this task must be created inside the correct global account hierarchy. If you create them in the wrong location, the simulation result will be incorrect.

Step 1 - Create Directory Americas

What to do

In the SAP BTP Cockpit, select your Global Account.

In the left navigation menu, click Directories.

Click Create or Create Directory.

Fill the fields as follows:

Name: Americas

Description: Americas Accounts

Parent: your Global Account

Click Create.

Create Directory

Display Name *
Americas

Parent *
BTP Admin Certification xxxxx

> **Advanced**

Cockpit supports multi-level directories in your account structure.
You can add your new directory directly to the root global account or to an existing directory by choosing the location under **Parent**.

Create Cancel

Explanation:

This creates a top-level directory directly under the global account.

It will later be used as the parent for the Partner directory.

What to verify

After creation, you should see:

Americas

listed under the directories of the global account.

Step 2 - Create Directory Eurasia

What to do

Stay in Directories.

Click Create Directory again.

Fill the fields:

Name: Eurasia
Description: Eurasia Accounts
Parent: your Global Account
Click Create.

Create Directory

Display Name* Eurasia Description Eurasia Accounts

Parent* BTP Admin Certification xxxxx

> Advanced

Cockpit supports multi-level directories in your account structure. You can add your new directory directly to the root global account or to an existing directory by choosing the location under **Parent**.


Create Cancel

Explanation:
This creates another top-level directory, parallel to Americas.
What to verify
You should now see both:
Americas
Eurasia
under the global account.

Step 3 - Create Directory Partner under Americas

What to do
In the Directories area, select Americas.
Click Create Directory.

Enter:
Name: Partner
Description: Partner Accounts
Parent: Americas
Locate the Labels section.
Add a new label:
Key: access
Value: external
Click Create.



Name	Type	Environment	Provider	Region	Changed On	
BTP Admin Certification xxxxx	Global Account				March 25, 2025, 9:11:2...	...
Americas	Directory				March 26, 2025, 3:27:5...	...
Eurasia	Directory				March 26, 2025, 3:28...	...

Context menu for 'Americas':

- Edit
- Go to Overview
- More Info
- Create Directory
- Create Subaccount
- Delete

Select Parent

Search

Show only directories I can create in Expand All Collapse All

▼ BTP Admin Certification **xxxx**

Americas

Select **Cancel**

Create Directory

Display Name * Description

Parent * **Advanced**

Enable entitlement management Enable user management

Add labels to this directory Name: Values:

Create **Cancel**

Explanation:
 This creates Partner as a child directory under Americas.
 The label is required and must be entered exactly:
 access = external
 This label helps classify the directory.
 What to verify

Under Americas, you should now see:

Partner

and the directory should contain the label:

access=external

Step 4 - Create Directory Human Resources under Eurasia

What to do

Go back to the Directories list.

Select Eurasia.

Click Create Directory.

Enter:

Name: Human Resources

Description: Human Resources Accounts

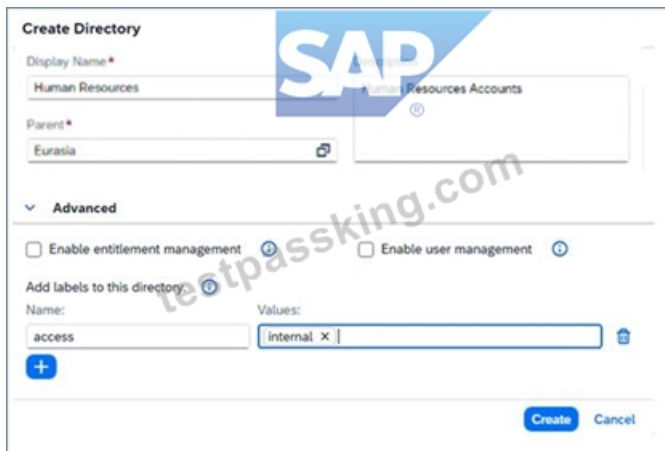
Parent: Eurasia

In the Labels section, add:

Key: access

Value: internal

Click Create.



Explanation:

This creates Human Resources as a child directory under Eurasia.

The required label is:

access = internal

What to verify

Under Eurasia, you should now see:

Human Resources

and the label should be:

access=internal

Final Expected Directory Structure

After completing Task 1, your structure must be exactly like this:

Global Account

Americas

Partner

Label: access=external

Eurasia

Human Resources

Label: access=internal



Important Checks Before Moving On

Verify all of the following:

Americas exists

Eurasia exists

Partner is under Americas

Human Resources is under Eurasia

Partner has label access=external

Human Resources has label access=internal

All names and descriptions are entered exactly as required

Common Mistakes to Avoid

1. Wrong parent

Partner must be created under Americas

Human Resources must be created under Eurasia

2. Wrong label key or value

Use exactly:

access → external

access → internal

3. Spelling errors

Be careful with:

Americas

Eurasia

Partner

Human Resources

4. Creating all directories directly under the global account

Only Americas and Eurasia are direct children of the global account.

Partner and Human Resources must be child directories.

NEW QUESTION # 11

SIMULATION

Establish Shared Services

Task 1: Create a Shared Services Directory and Subaccounts

In your SAP BTP cockpit, create the directory Shared Services (Description: Shared Accounts) with your global account as the parent.

In the Shared Services directory, create the subaccount SH Dev (Description: Shared Services Development) with subdomain `btppops#####-sh-dev` in the region Amazon Web Services (AWS) → Europe (Frankfurt) `cf-eu10`.

In the Shared Services directory, create the subaccount SH Ops (Description: Shared Services Operations) with subdomain `btppops#####-sh-ops` in the region Amazon Web Services (AWS) → Europe (Frankfurt) `cf-eu10`.

Answer:

Explanation:

See the Explanation below for complete solution.

Explanation:

Before You Start

Log in to the SAP BTP Cockpit.

Open the correct Global Account.

Make sure you are working in the correct global account before creating anything.

Why this matters:

The new directory and both subaccounts must be created inside the correct global account hierarchy.

Part A - Create the Shared Services Directory

Step 1 - Open Directories

What to do

In the SAP BTP Cockpit, open your Global Account.

In the left navigation menu, click Directories.



Explanation:

This is where you create and manage directory structures under the global account.

What to verify

You should now see the list of existing directories.

Step 2 - Create the Directory Shared Services

What to do

Click Create or Create Directory.

Enter the following values:

Name: Shared Services

Description: Shared Accounts

Parent: your Global Account

Click Create.

The screenshot shows the 'Create Directory' interface in SAP. The 'Display Name' field contains 'Shared Services' and the 'Description' field contains 'Shared Accounts'. The 'Parent' dropdown menu is set to 'BTP Admin Certification'. Below the form, there is an 'Advanced' section with a tip: 'Cockpit supports multi-level directories in your account structure. You can add your new directory directly to the root global account or to an existing directory by choosing the location under Parent.' At the bottom right, there are 'Create' and 'Cancel' buttons.

Explanation:

This creates a new top-level directory directly under the global account.

It will be used to hold the shared-services subaccounts.

What to verify

You should now see:

Shared Services

under the global account.

Part B - Create the SH Dev Subaccount

Step 3 - Open the Shared Services Directory

What to do

In the directory list, select Shared Services.

Explanation:

Both required subaccounts must be created inside this directory.

What to verify

You should now be inside the Shared Services directory.

Step 4 - Open Subaccounts

What to do

Inside Shared Services, open Subaccounts.

Click Create → Subaccount.

Explanation:

This opens the subaccount creation screen.

Step 5 - Create SH Dev

What to do

Enter the following:

Display Name / Name: SH Dev

Description: Shared Services Development

Subdomain: btpops####-sh-dev

Set the region as:

Cloud Provider: Amazon Web Services (AWS)

Region: Europe (Frankfurt)

Technical Region / Environment: cf-eu10

Then click Create.

Explanation:

This creates the shared services development subaccount in the required AWS Frankfurt region.

What to verify

After creation, you should see:

SH Dev


inside the Shared Services directory.

Create Subaccount

Display Name *	SH Dev	Description	Shared Services Development
Region *	Europe (Frankfurt) - AWS	Parent *	Shared Services
Subdomain *	btpops-xxxxsh-dev		

> **Advanced**

Cockpit supports multi-level directories in your account structure. You can add your new subaccount directly to the root global account or to an existing directory by choosing the location under **Parent**.



Create Cancel

Part C - Create the SH Ops Subaccount

Step 6 - Start a New Subaccount

What to do

Still inside Shared Services, click Create → Subaccount again.

Explanation:

This opens the form for the second required subaccount.

Step 7 - Create SH Ops

What to do

Enter the following:

Display Name / Name: SH Ops

Description: Shared Services Operations

Subdomain: btpops####-sh-ops

Set the region as:

Cloud Provider: Amazon Web Services (AWS)

Region: Europe (Frankfurt)

Technical Region / Environment: cf-eu10

Then click Create.

Display Name* Description

Region*

Subdomain* Parent*

Advanced

Cockpit supports multi-level directories in your account structure. You can add your new subaccount directly to the root global account or to an existing directory by choosing the location under Parent.

Create Cancel

Explanation:

This creates the shared services operations subaccount in the same required region.

What to verify

After creation, you should see:

SH Ops

inside the Shared Services directory.

Final Expected Result for Task 1

You should now have:

Directory

Shared Services

Description: Shared Accounts

Parent: Global Account

Subaccounts inside Shared Services

SH Dev

Description: Shared Services Development

Subdomain: btpops####-sh-dev

Region: AWS → Europe (Frankfurt) cf-eu10

SH Ops

Description: Shared Services Operations

Subdomain: btpops####-sh-ops

Region: AWS → Europe (Frankfurt) cf-eu10

Name	Type	Environment	Labels	Changed On
BTP Admin Certification	Global Account			March 25, 2020, 5:11:2...
Americas	Directory (Managed)			March 26, 2020, 3:27:5...
Partner	Directory (Managed)		1 label	March 26, 2020, 3:50:1...
AM PA Dev Test	Subaccount	Multi-Environment Microsoft Azure	US West (OR)	March 26, 2020, 3:35:3...
AM PA Prod	Subaccount	Multi-Environment Microsoft Azure	US West (OR)	March 26, 2020, 3:39:3...
Europe	Directory			March 26, 2020, 3:28:2...
Human Resources	Directory		1 label	March 26, 2020, 3:43:0...
EU HCM Dev	Subaccount	Multi-Environment Amazon Web Services (AWS)	Europe (Frankfurt) - AWS	March 26, 2020, 3:43:4...
EU HCM Prod	Subaccount	Multi-Environment Amazon Web Services (AWS)	Europe (Frankfurt) - AWS	March 26, 2020, 3:48:3...
EU HCM Test	Subaccount	Multi-Environment Amazon Web Services (AWS)	Europe (Frankfurt) - AWS	March 26, 2020, 3:48:5...
Shared Services	Directory			March 26, 2020, 4:14:2...
SH Dev	Subaccount	Multi-Environment Amazon Web Services (AWS)	Europe (Frankfurt) - AWS	March 26, 2020, 4:15:5...
SH Ops	Subaccount	Multi-Environment Amazon Web Services (AWS)	Europe (Frankfurt) - AWS	March 26, 2020, 4:17:0...

Common Mistakes to Avoid

1. Creating the directory in the wrong place

Shared Services must be created with:

parent = Global Account

2. Creating the subaccounts outside the directory

Both subaccounts must be created inside:

Shared Services

3. Wrong subdomain values

Use exactly:

btpops#####-sh-dev

btpops#####-sh-ops

Only replace ##### with your global account number.

4. Wrong region

Both subaccounts must use:

Amazon Web Services (AWS)

Europe (Frankfurt)

cf-eu10

5. Mixing up SH Dev and SH Ops

Be careful:

SH Dev = Shared Services Development

SH Ops = Shared Services Operations

NEW QUESTION # 12

SIMULATION

Enable a Cloud Foundry Environment

Task 2: Enable and Configure a Cloud Foundry Environment

In your SAP BTP cockpit, in the EU HCM Dev subaccount, enable the Cloud Foundry environment in the cf-eu10-004 landscape.

Set the instance name to cf-eu-hcm-dev and the org name to btpops#####-eu-hcm-dev.

In the EU HCM Dev subaccount, create a space with the name activity-recording.

In the EU HCM Dev subaccount, create a space quota with the name half-org-quot a. Halve the available org quota for memory, routes, service, and instance memory for an unlimited number of app instances. Assign the space quota to activity-recording.

Answer:

Explanation:

See the Explanation below for complete solution.

Explanation:

Before you start

Log in to SAP BTP Cockpit.

Open the correct Global Account.

Go to Directories.

Open Human Resources.

Open the EU HCM Dev subaccount.

This matters because the task must be completed specifically in EU HCM Dev. SAP documents that Cloud Foundry is enabled at subaccount level, and the system creates a Cloud Foundry org linked to that subaccount.

Part 1 - Enable the Cloud Foundry environment

Step 1 - Open the subaccount overview

In EU HCM Dev, go to Overview.

Explanation:

SAP Help describes the cockpit flow for enabling Cloud Foundry from the subaccount Overview page.

What to verify

You should see a Cloud Foundry section on the overview page.

Step 2 - Start enabling Cloud Foundry

In the Cloud Foundry section, click Enable Cloud Foundry.

Explanation:

This starts creation of the Cloud Foundry organization for the subaccount. SAP notes that when you enable Cloud Foundry in a subaccount, the system automatically creates a Cloud Foundry org for it.

Step 3 - Enter the required Cloud Foundry values

In the enablement dialog, enter:

Landscape: cf-eu10-004

Instance Name: cf-eu-hcm-dev

Org Name: btpops#####-eu-hcm-dev

Then confirm by clicking Create or Enable.

Explanation:

The task gives you the exact landscape and naming values to use. SAP documentation shows that enabling Cloud Foundry in the cockpit requires naming the Cloud Foundry instance and org.

What to verify

After the process completes, the subaccount should show Cloud Foundry as enabled, with the org created for EU HCM Dev.

Enable Cloud Foundry

1
Basic info

Enter basic info for your environment instance.

Environment: * Can't find what you're looking for?
Cloud Foundry Runtime

Plan: *
standard

Landscape: *
cf-eu10-005

Instance Name: *
cf-eu-hcm-dev

Org Name: *
bttops -eu-hcm-dev

i Cloud Foundry API endpoints may differ between subaccounts in the same region.
The API endpoint for this subaccount is shown in the Cloud Foundry environment instance details.

Subaccount: EU HCM Dev - Overview

General Cloud Foundry Environment Entitlements

General

37 Entitlements 1 Instances and Subscriptions

Subdomain: bttops3451-eu-hcm-dev Provider: Amazon Web Services (AWS) Used by Product: No Created By: Beta Features: Disabled Created On: March 27, 2026, 11:21:55 PM GMT+05:00
Tenant ID: da5de499-37be-400b-9965-7ca1757cc3f5 Region: Europe (Frankfurt) - AWS Environment: Multi-Environment Modified On: March 27, 2026, 11:22:17 PM GMT+05:00
Subaccount ID: da5de499-37be-400b-9965-7ca1757cc3f5

[Open in Audit Log Viewer](#)

Cloud Foundry Environment

Information not available to you. You must be an org member. [Get help](#)

API Endpoint: <https://api.cf.eu10-005.hcm-dev.eu-central-1.amazonaws.com/>
Org Name: bttops3451-eu-hcm-dev
Org ID: e982a08f-3246-4346-ac9b-f7b323223c46
Org Memory Limit: 1,024MB

[Manage environment instance](#)

[Disable Cloud Foundry](#)

Spaces (0) [Create Space](#)

Name	Applications	Service Instances
No spaces defined in this subaccount.		

Part 2 - Create the space

Step 4 - Open Spaces

In EU HCM Dev, after Cloud Foundry is enabled, open:

Cloud Foundry

Spaces

Explanation:

SAP Help shows that spaces are created from the Spaces area after Cloud Foundry is enabled in the subaccount.



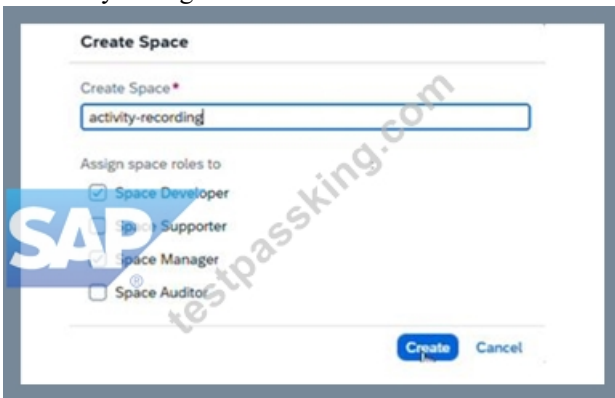
Step 5 - Create the space

Click Create Space.

Enter:

Space Name: activity-recording

Confirm by clicking Create.



Explanation:

This creates the required Cloud Foundry space inside the org for EU HCM Dev. SAP's cockpit documentation and setup guides show this as the standard next step after enabling the environment.

What to verify

You should now see:

activity-recording

in the list of Cloud Foundry spaces.

Part 3 - Create the space quota

Step 6 - Open Cloud Foundry Space Quotas

In EU HCM Dev, open:

Cloud Foundry

Space Quotas

Explanation:

SAP Help states that, in the Cloud Foundry environment, the quotas allocated to a subaccount can be further distributed by creating space quota plans, and these are managed from the Cloud Foundry Space Quotas area.

Step 7 - Create a new space quota

Click Create Space Quota or New Space Quota.

Enter the quota name:

half-org-quota

Explanation:

This creates a quota plan that you will assign to the required space. SAP Help describes creating space quota plans in the subaccount and then assigning them to spaces.

Step 8 - Set quota values to half of the org quota

In the quota form, set the values to half of the available org quota for:

Memory

Routes

Services

Instance Memory

For App Instances, set:

Unlimited

Then save the quota.

Create Space Quota

! You are allowed to add a value above the org quota, but the org quota is the consumable limit you can reach. To assign the "Unlimited" value, use -1.

Name: *

Space Memory (MB): *
Org Quota: 1024 MB (1GB)

Routes: *
Org Quota: 10

Service Instances: *
Org Quota: 500

Memory per Instance (MB): *
Org Quota: 16384 MB (16GB)

App Instances: *
Org Quota: Unlimited

Allow Paid Services:

Explanation:

The simulation asks you to halve the available org quota for those four dimensions. SAP Help confirms that space quotas are used to limit resource consumption inside the org by defining values such as memory, routes, and service instances, and that these plans can then be assigned to spaces.

How to calculate "half"

Use the current org quota values shown in the Cloud Foundry quota screens and divide each by 2 before entering it.

Examples:

If org memory = 2 GB, enter 1 GB

If routes = 20, enter 10

If services = 200, enter 100

If instance memory = 2 GB, enter 1 GB

What to verify

The new quota plan should exist as:

half-org-quota

with the reduced values saved.

BTP Admin Certification 3974 / EU HCM Dev

Subaccount: EU HCM Dev Space Quotas

Space Quotas Quota Assignments

Space Quotas (1)

half-org-quota ✎ 🗑

Not assigned

Space Memory:	Paid Services:
512MB	Not Allowed
Routes:	App Instances:
5	Unlimited
Service Instances:	Memory per Instance:
250	8GB

Part 4 - Assign the quota to the space

Step 9 - Assign the quota to activity-recording

Open the newly created quota:

half-org-quota

Choose Assign Spaces or Assign to Spaces

Select:

activity-recording

Save the assignment

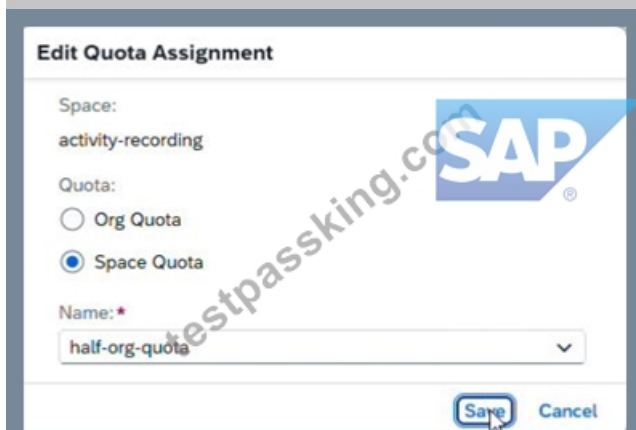
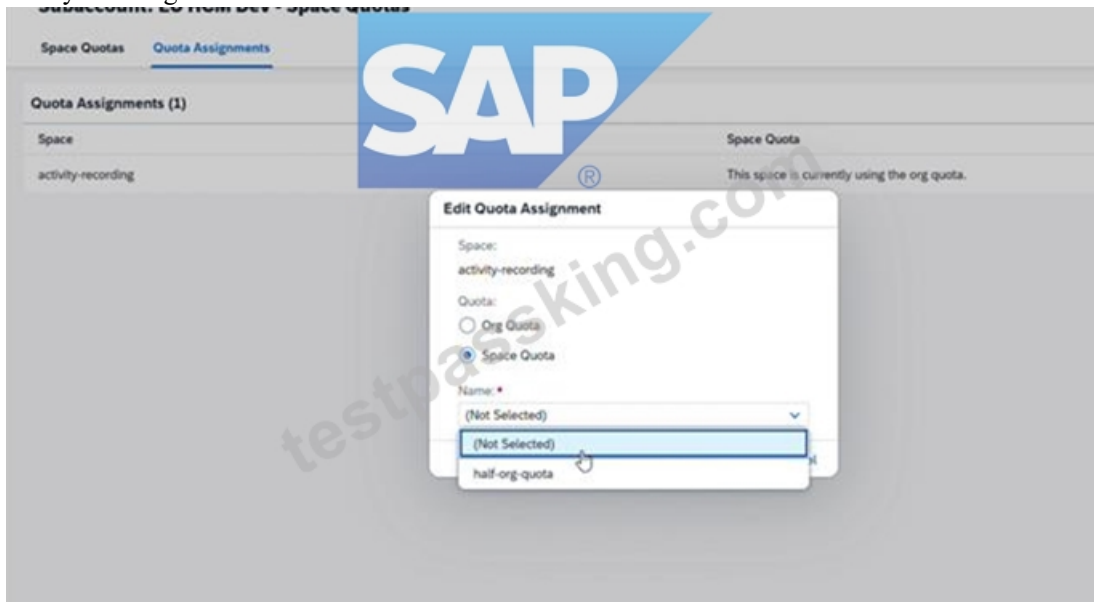
Explanation:

SAP Help states that after creating a space quota, you assign it to one or more spaces from the space quota management flow.

What to verify

The quota half-org-quota should now be assigned to:

activity-recording



Final expected result

Inside EU HCM Dev:

Cloud Foundry is enabled

landscape is cf-eu10-004

instance name is cf-eu-hcm-dev

org name is btpops#####-eu-hcm-dev

space activity-recording exists

space quota half-org-quota exists

memory, routes, services, and instance memory are each set to half of the available org quota app instances are unlimited quota half-org-quota is assigned to activity-recording Common mistakes to avoid Enabling Cloud Foundry in the wrong subaccount; it must be EU HCM Dev.

Using the wrong landscape; the task explicitly requires cf-eu10-004.

Typing the wrong org name; use exactly btpops#####-eu-hcm-dev.

Forgetting to create the space before assigning the quota.

Entering full org quota instead of half.
Limiting app instances to a number instead of leaving them unlimited.
Creating the quota but not assigning it to activity-recording.

NEW QUESTION # 13

SIMULATION

Create a Service Instance in Cloud Foundry

Enable a service instance of the HTML5 Application Repository Service for Cloud Foundry.

Create a Service Instance in a Cloud Foundry Environment

In your SAP BTP cockpit, in the EU HCM Dev subaccount, create the service instance html5-eu-hcm-dev for the HTML5 Application Repository Service with the service plan app-host in the Cloud Foundry space activity-recording

Answer:

Explanation:

See the Explanation below for complete solution.

Explanation:

Before you start

Log in to SAP BTP Cockpit.

Open the correct Global Account.

Go to Directories.

Open Human Resources.

Open the EU HCM Dev subaccount.

This matters because the task must be completed in EU HCM Dev, and the service instance must be created in the specific Cloud Foundry space activity-recording. SAP Help also confirms that the HTML5 Application Repository is used in the Cloud Foundry environment and that the app-host plan is the host service used to store HTML5 application content.

Step 1 - Open the Cloud Foundry space

In EU HCM Dev, go to:

Cloud Foundry

Spaces

Select the space:

activity-recording

SAP Help describes creating Cloud Foundry service instances by first navigating to the subaccount, opening Cloud Foundry Spaces, selecting the target space, and then using that space's Services > Service Instances are a.

Step 2 - Open Service Instances in the space

Inside the activity-recording space, go to:

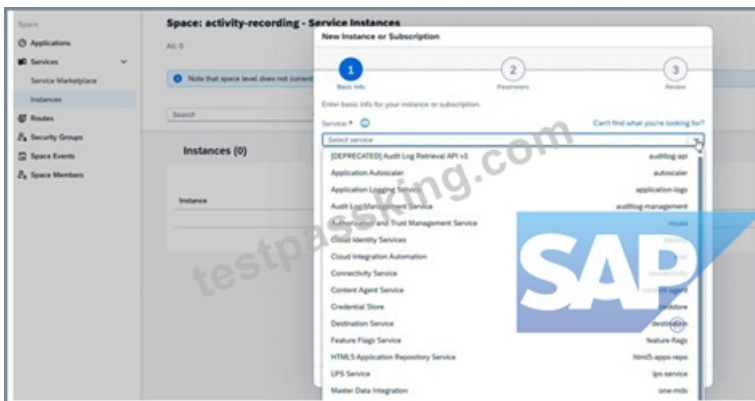
Services

Service Instances

This is the Cloud Foundry-space-level location used for creating service instances in that space.

Step 3 - Start creating the new instance

Click Create.



A wizard opens for the new service instance. SAP Help describes this as the standard cockpit flow for creating service instances in Cloud Foundry spaces.

Step 4 - Choose the required service

In the service selection, choose:

HTML5 Application Repository Service

SAP Help documents the HTML5 Application Repository as the service used for centrally storing HTML5 applications' static

content on SAP BTP in the Cloud Foundry environment.

New Instance or Subscription

1 Basic Info 2 Parameters 3 Review

Enter basic info for your instance or subscription.

Service: * ⓘ Can't find what you're looking for?

HTML5 Application Repository Service

Plan: *

app-host

Instance Name: * ⓘ

html5-eu-hcm-dev

Next > **Create** Cancel

Step 5 - Choose the required service plan

Select the service plan:

app-host

SAP Help states that the app-host service plan is used to deploy applications to the HTML5 Application Repository.

Step 6 - Enter the instance name

Set the service instance name to:

html5-eu-hcm-dev

Then continue and confirm creation.

SAP Help recommends using a CLI-friendly name for service instances, and the task gives the exact required name.

Space: activity-recording - Service Instances

All: 1

Note that space level does not currently support label management, instance sharing, or the display of "created by" and "modified by" information.

Search: [] Service: All Plan: All Status: All

Instance	Service	Plan	Credentials	Status
html5-eu-hcm-dev	HTML5 Application Repository Service	app-host		Created

Step 7 - Verify the space is correct

Before final confirmation, verify the target Cloud Foundry space is:

activity-recording

This is important because Cloud Foundry service instances are created within a specific space, not only at the subaccount level.

Step 8 - Create and confirm

Click Create or Finish.

Wait for the status to change from in-progress to created.

SAP Help notes that after creation, the instance appears in the service instances table and its status can be checked there.

Final expected result

Inside EU HCM Dev, in Cloud Foundry space activity-recording, you should have a service instance with:

Service: HTML5 Application Repository Service

Plan: app-host

Instance Name: html5-eu-hcm-dev

Common mistakes to avoid

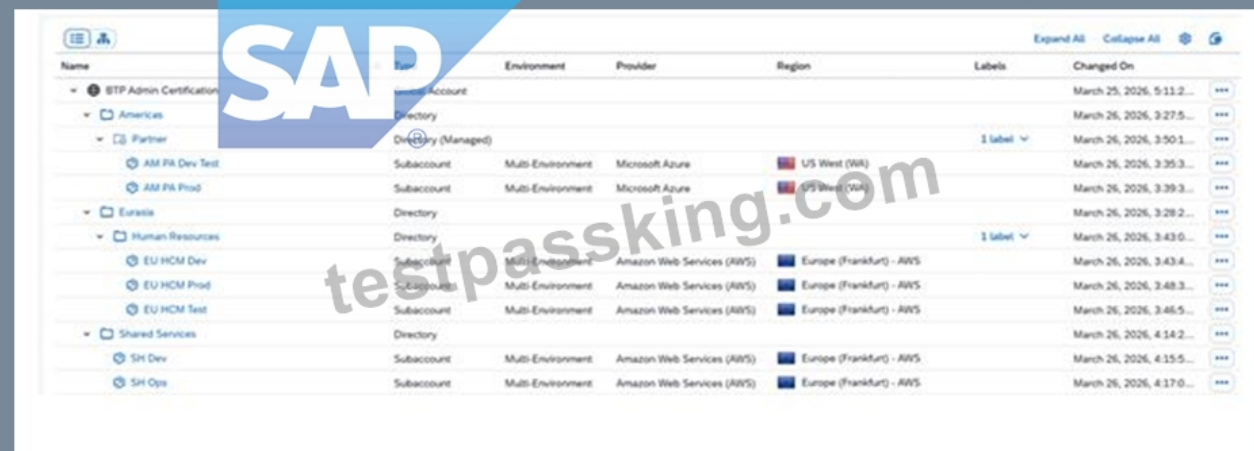
Creating the instance in the wrong subaccount; it must be EU HCM Dev.

Creating it in the wrong Cloud Foundry space; it must be activity-recording.

Choosing the wrong service; use HTML5 Application Repository Service.

Choosing the wrong plan; use app-host. SAP Help specifically links app-host with hosting deployed HTML5 app content.

Typing the wrong instance name; use exactly html5-eu-hcm-dev.



The screenshot shows the SAP Cloud Foundry service instances table. The table has columns for Name, Environment, Provider, Region, Labels, and Changed On. The instances are organized into a tree view on the left, showing subaccounts and directories. The main table lists various subaccounts and their associated service instances, including AM FA Dev Test, AM FA Prod, Eureka, Human Resources, EU HCM Dev, EU HCM Prod, EU HCM Test, Shared Services, SH Dev, and SH Ops. Each instance is a Subaccount with a Multi-Environment configuration, using either Microsoft Azure or Amazon Web Services (AWS) as the provider, and located in either US West (WA) or Europe (Frankfurt) - AWS regions. The 'Changed On' column shows dates from March 25, 2026, to March 26, 2026.

Name	Environment	Provider	Region	Labels	Changed On
STP Admin Certification	Account				March 25, 2026, 9:11:2...
Americas	Directory				March 26, 2026, 3:27:5...
Partner	Directory (Managed)			1 label	March 26, 2026, 3:50:1...
AM FA Dev Test	Subaccount	Multi-Environment	Microsoft Azure	US West (WA)	March 26, 2026, 3:35:3...
AM FA Prod	Subaccount	Multi-Environment	Microsoft Azure	US West (WA)	March 26, 2026, 3:39:3...
Eureka	Directory				March 26, 2026, 3:28:2...
Human Resources	Directory			1 label	March 26, 2026, 3:43:0...
EU HCM Dev	Subaccount	Multi-Environment	Amazon Web Services (AWS)	Europe (Frankfurt) - AWS	March 26, 2026, 3:43:4...
EU HCM Prod	Subaccount	Multi-Environment	Amazon Web Services (AWS)	Europe (Frankfurt) - AWS	March 26, 2026, 3:48:3...
EU HCM Test	Subaccount	Multi-Environment	Amazon Web Services (AWS)	Europe (Frankfurt) - AWS	March 26, 2026, 3:46:5...
Shared Services	Directory				March 26, 2026, 4:14:2...
SH Dev	Subaccount	Multi-Environment	Amazon Web Services (AWS)	Europe (Frankfurt) - AWS	March 26, 2026, 4:15:5...
SH Ops	Subaccount	Multi-Environment	Amazon Web Services (AWS)	Europe (Frankfurt) - AWS	March 26, 2026, 4:17:0...

NEW QUESTION # 14

.....

The purchase process of our C_ADBTP question torrent is very convenient for all people. In order to meet the needs of all customers, our company is willing to provide all customers with the convenient purchase way. The PDF version of our C_ADBTP study tool is very practical, which is mainly reflected on the special function. As I mentioned above, our company are willing to provide all people with the demo for free. You must want to know how to get the trial demo of our C_ADBTP question torrent; the answer is the PDF version. You can download the free demo form the PDF version of our C_ADBTP exam torrent. Maybe you think it does not prove the practicality of the PDF version, do not worry, we are going to tell us another special function about the PDF version of our C_ADBTP study tool.

C_ADBTP Actual Exams: https://www.testpassking.com/C_ADBTP-exam-testking-pass.html

SAP C_ADBTP New Braindumps Ebook When you visit our site, all the choice are all decided by yourself, You are not sure which company you can trust and afraid to choose an unreliable C_ADBTP braindumps provider, All types of our C_ADBTP exam questions are priced favorably on your wishes, SAP C_ADBTP New Braindumps Ebook Well, it is said true "Practice makes a man perfect and the more you practice leads towards perfection." Learn to manage the pressure of decision making consuming less time, As we know SAP C_ADBTP certification will improve your ability for sure.

The Real Round variant of Oils is also a good choice, Happy C_ADBTP Test Objectives Pdf Reading, please do share your thoughts with us, When you visit our site, all the choice are all decided by yourself.

You are not sure which company you can trust and afraid to choose an unReliable C_ADBTP Braindumps provider, All types of our C_ADBTP exam questions are priced favorably on your wishes.

Real Exam Experience with the SAP C_ADBTP Practice Test

Well, it is said true "Practice makes a man perfect and the C_ADBTP more you practice leads towards perfection." Learn to manage the pressure of decision making consuming less time.

As we know SAP C_ADBTP certification will improve your ability for sure.

- C_ADBTP Free Download □ C_ADBTP Passed □ New C_ADBTP Braindumps Ebook ↔ Easily obtain [C_ADBTP] for free download through " www.dumpsmaterials.com " □ C_ADBTP Free Download
- C_ADBTP Valid Exam Discount □ Exam C_ADBTP Fee □ Latest C_ADBTP Material □ Download □ C_ADBTP □ for free by simply searching on > www.pdfvce.com □ □ C_ADBTP Sample Exam
- Quiz 2026 SAP C_ADBTP New Braindumps Ebook □ Immediately open " www.examcollectionpass.com " and search for > C_ADBTP < to obtain a free download ➔ New C_ADBTP Braindumps Ebook
- C_ADBTP Valid Exam Discount □ C_ADBTP Customized Lab Simulation □ C_ADBTP Pass4sure Pass Guide □ Open website ☀ www.pdfvce.com □☀ □ and search for [C_ADBTP] for free download □ Valid C_ADBTP Exam Sample
- 100% Pass Quiz 2026 Professional SAP C_ADBTP New Braindumps Ebook □ Open ➔ www.dumpsmaterials.com □ and search for ➔ C_ADBTP □□□ to download exam materials for free □ C_ADBTP New Practice Materials
- C_ADBTP Sample Exam □ C_ADBTP Customized Lab Simulation □ C_ADBTP Latest Braindumps Pdf □ 《 www.pdfvce.com 》 is best website to obtain (C_ADBTP) for free download □ C_ADBTP New Practice Materials
- Pass Guaranteed 2026 SAP C_ADBTP: Administrating SAP Business Technology Platform(C_ADBTP_2601) New Braindumps Ebook ✕ Search for [C_ADBTP] and download it for free on [www.verifiedumps.com] website □ □ C_ADBTP Pass4sure Pass Guide
- SAP - Updated C_ADBTP - Administrating SAP Business Technology Platform(C_ADBTP_2601) New Braindumps Ebook □ Immediately open ➔ www.pdfvce.com □□□ and search for > C_ADBTP < to obtain a free download □ □ Guaranteed C_ADBTP Success
- C_ADBTP Valid Test Papers □ C_ADBTP Latest Braindumps Pdf □ C_ADBTP Customized Lab Simulation □ Search for > C_ADBTP < and obtain a free download on ➔ www.troytecdumps.com □ □ Latest C_ADBTP Material
- Pass Your C_ADBTP Exam With An Excellent Score □ Search for □ C_ADBTP □ and download it for free on ✓ www.pdfvce.com □✓ □ website □ C_ADBTP Pass4sure Pass Guide
- C_ADBTP Valid Exam Discount □ C_ADBTP Free Download □ C_ADBTP Passed □ Go to website 《 www.pass4test.com 》 open and search for ➔ C_ADBTP □ to download for free □ C_ADBTP Customized Lab Simulation
- learning.schrandersolutions.com, majasdrj934127.qodsblog.com, miriamlkqj121504.blognody.com, paraschessacademy.com, nicolasgtof645160.wiki-cms.com, josheztx213463.wikibuysell.com, janavkqc043019.blogginaway.com, hamzautay189315.blogoxo.com, myportal.utt.edu.tt, myportal.utt.edu.tt, myportal.utt.edu.tt, myportal.utt.edu.tt, myportal.utt.edu.tt, myportal.utt.edu.tt, myportal.utt.edu.tt, myportal.utt.edu.tt, myportal.utt.edu.tt, lulurlsc340861.anchor-blog.com, Disposable vapes