

AZ-104 Valid Study Questions - Test AZ-104 Questions

AZ 104 Exam Questions and Answers Updated

You need to define a custom domain name for Azure AD to support the planned infrastructure. Which domain name should you use?

- A. ad.humongousinsurance.com
- B. humongousinsurance.onmicrosoft.com
- C. humongousinsurance.local
- D. humongousinsurance.com - Answer: D

Every Azure AD directory comes with an initial domain name in the form of domainname.onmicrosoft.com.

The initial domain name cannot be changed or deleted, but you can add your corporate domain name to AAD as well. Adding custom domain names to Azure AD allows you to assign user names in the directory that are familiar to your users, such as 'alice@contoso.com.' instead of 'alice@domain name.onmicrosoft.com'.

You need to prepare the environment to meet the authentication requirements. Which two actions should you perform? Each correct answer presents part of the solution. NOTE: Each correct selection is worth one point.

- A. Allow inbound TCP port 8080 to the domain controllers in the Miami office.
- B. Add <http://autologon.microsoftazuread-ss.com> to the intranet zone of each client computer in the Miami office.
- C. Join the client computers in the Miami office to Azure AD.
- D. Install the Active Directory Federation Services (AD FS) role on a domain controller in the Miami office. Questions & Answers PDF P-16 www.dumpskey.com office.
- E. Install Azure AD Connect on a server in the Miami office and enable Pass-through Authentication. - Answer: BE

B: You can gradually roll out Seamless SSO to your users. You start by adding the following Azure AD URL to all or selected users' Intranet zone settings by using Group Policy in Active Directory: <https://autologon.microsoftazuread-ss.com>

E: Seamless SSO works with any method of cloud authentication - Password Hash Synchronization or Pass-through Authentication, and can be enabled via Azure AD Connect.

Scenario: Licensing Issue

1. You attempt to assign a license in Azure to several users and receive the following error message: "Licenses not assigned. License agreement failed for one user."
2. You verify that the Azure subscription has the available licenses.

BTW, DOWNLOAD part of Dumpkiller AZ-104 dumps from Cloud Storage: <https://drive.google.com/open?id=1vBNUszn9BMyqIJEkjv9pBSXvhtmt2Yxm>

With the Microsoft AZ-104 exam practice test questions, you can easily speed up your AZ-104 exam preparation and be ready to solve all the final Microsoft AZ-104 exam questions. As far as the top features of Microsoft AZ-104 Exam Practice test questions are concerned, these AZ-104 exam questions are real and verified by experience exam trainers.

Microsoft AZ-104 certification exam is designed to test one's skills in managing and administering Microsoft Azure services. AZ-104 exam is ideal for professionals who want to enhance their knowledge and skills related to cloud computing and become certified in Azure administration. AZ-104 Exam is intended to evaluate the candidate's ability to manage Azure subscriptions, resources, and services, along with monitoring, securing, and troubleshooting Azure solutions.

>> AZ-104 Valid Study Questions <<

Quiz Pass-Sure Microsoft - AZ-104 - Microsoft Azure Administrator Valid Study Questions

Dumpkiller are specialized in providing our customers with the most reliable and accurate AZ-104 exam guide and help them pass their AZ-104 exams by achieve their satisfied scores. With our AZ-104 study materials, your exam will be a piece of cake. We have a lasting and sustainable cooperation with customers who are willing to purchase our AZ-104 Actual Exam. We try our best to renovate and update our AZ-104 study materials in order to help you fill the knowledge gap during your learning process, thus increasing your confidence and success rate.

Microsoft Azure Administrator Sample Questions (Q211-Q216):

NEW QUESTION # 211

Note: This question is part of a series of questions that present the same scenario. Each question in the series contains a unique solution that might meet the stated goals. Some question sets might have more than one correct solution, while others might not have a correct solution.

After you answer a question in this section, you will NOT be able to return to it. As a result, these questions will not appear in the review screen.

You have an Azure subscription named Subscription1. Subscription1 contains a resource group named RG1. RG1 contains resources that were deployed by using templates.

You need to view the date and time when the resources were created in RG1.

Solution: From the RG1 blade, you click Automation script.

Does this meet the goal?

- A. No
- B. Yes

Answer: A

Explanation:

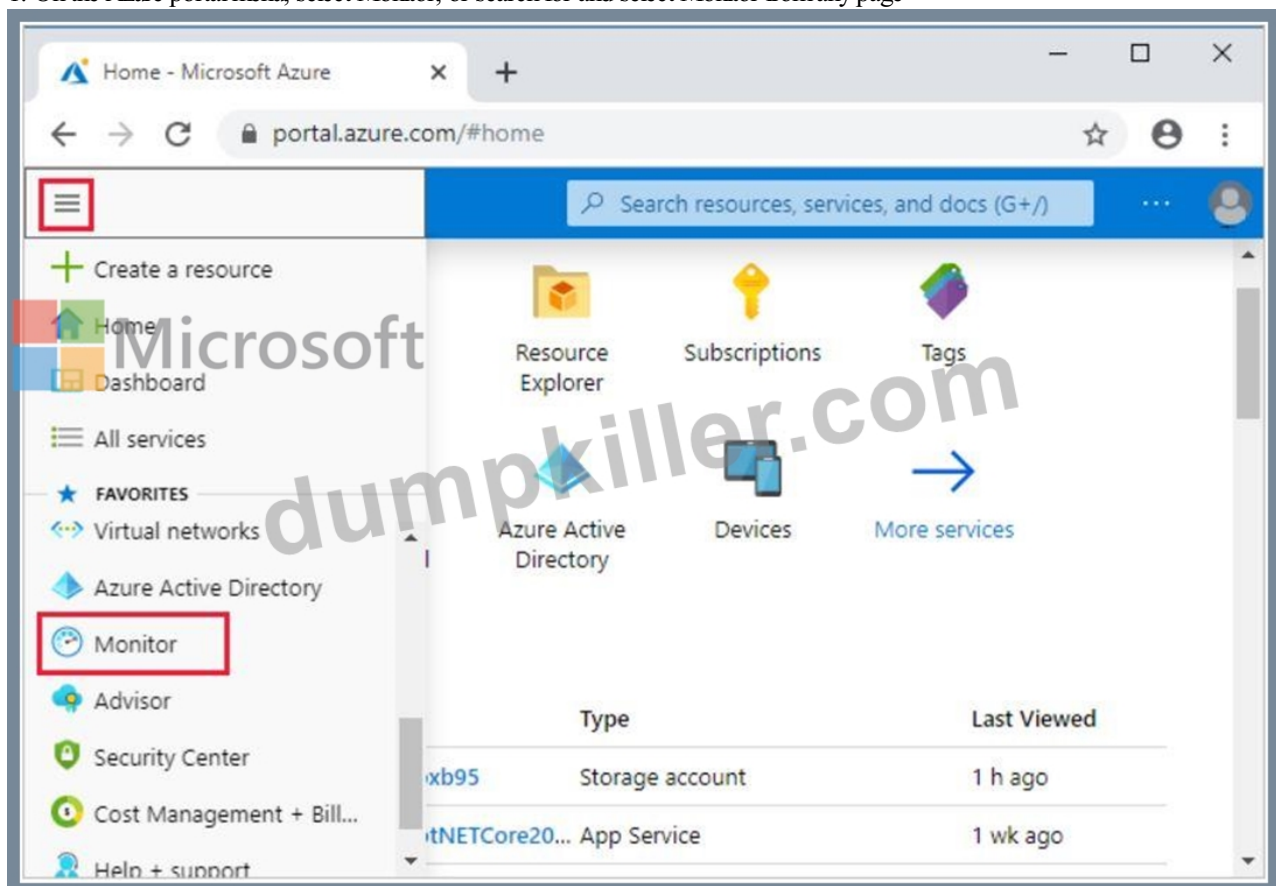
From the RG1 blade, click Deployments. You see a history of deployment for the resource group.

Reference:

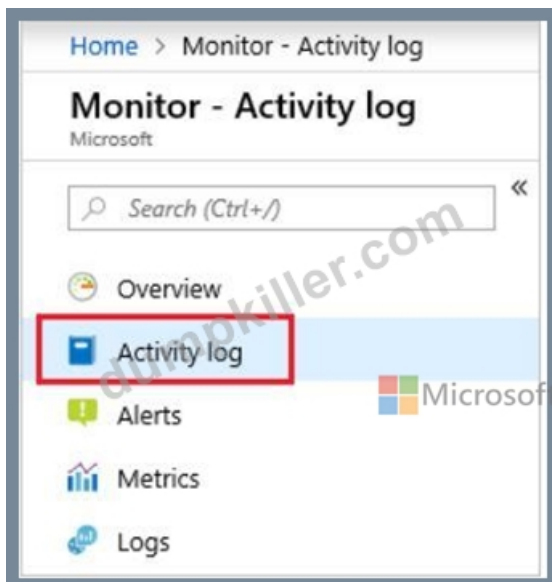
<https://docs.microsoft.com/en-us/azure/azure-resource-manager/templates/template-tutorial-create-first-template?tabs=azure-powershell> Through activity logs, you can determine:

- § what operations were taken on the resources in your subscription
- § who started the operation
- § when the operation occurred
- § the status of the operation
- § the values of other properties that might help you research the operation

1. On the Azure portal menu, select Monitor, or search for and select Monitor from any page



2. Select Activity Log.



3. You see a summary of recent operations. A default set of filters is applied to the operations. Notice the information on the summary includes who started the action and when it happened.

OPERATION NAME	STATUS	TIME	TIME STAMP	SUBSCRIPTION	EVENT INITIATED BY
▶ List Storage Account Keys	Succeeded	3 h ago	Tue Jan 22 2...	Third Internal Consumption	example@microsoft.com
▶ AuditIfNotExists	Succeeded	3 h ago	Tue Jan 22 2...	Third Internal Consumption	Microsoft Azure Policy Insig...
▶ AuditIfNotExists	Succeeded	3 h ago	Tue Jan 22 2...	Third Internal Consumption	Microsoft Azure Policy Insig...

<https://docs.microsoft.com/en-us/azure/azure-resource-manager/management/view-activity-logs>

NEW QUESTION # 212

You have an Azure subscription that contains a storage account named storage1. The subscription is linked to an Azure Active Directory (Azure AD) tenant named contoso.com that syncs to an on-premises Active Directory domain. The domain contains the security principals shown in the following table.

Name	Type
User1	User
Computer1	Computer

In Azure AD, you create a user named User2.

The storage1 account contains a file share named share1 and has the following configurations.

```

"kind": "StorageV2",
"properties": {
  "azureFilesIdentityBasedAuthentication": {
    "directoryServiceOptions": "AD",
    "activeDirectoryProperties": {
      "domainName": "Contoso.com",
      "netBiosDomainName": "Contoso.com",
      "forestName": "Contoso.com",

```



For each of the following statements, select Yes if the statement is true. Otherwise, select No.
NOTE: Each correct selection is worth one point.

Microsoft	Statements	Yes	No
	You can assign the Storage File Data SMB Share Contributor role to User1 for share1.	<input type="radio"/>	<input type="radio"/>
	You can assign the Storage File Data SMB Share Reader role to Computer1 for share1.	<input type="radio"/>	<input type="radio"/>
	You can assign the Storage File Data SMB Share Elevated Contributor role to User2 for share1.	<input type="radio"/>	<input type="radio"/>

Answer:

Explanation:

Microsoft	Statements	Yes	No
	You can assign the Storage File Data SMB Share Contributor role to User1 for share1.	<input checked="" type="radio"/>	<input type="radio"/>
	You can assign the Storage File Data SMB Share Reader role to Computer1 for share1.	<input type="radio"/>	<input checked="" type="radio"/>
	You can assign the Storage File Data SMB Share Elevated Contributor role to User2 for share1.	<input checked="" type="radio"/>	<input type="radio"/>

Reference:

<https://docs.microsoft.com/en-us/azure/storage/files/storage-files-identity-ad-ds-assign-permissions?tabs=azure-portal>

NEW QUESTION # 213

You have an Azure subscription that contains a virtual network named VNet1. VNet1 uses an IP address space of 10.0.0.0/16 and contains the subnets in the following table.

Name	IP address range
Subnet0	10.0.0.0/24
Subnet1	10.0.1.0/24
Subnet2	10.0.2.0/24
GatewaySubnet	10.0.254.0/24

Subnet1 contains a virtual appliance named VM1 that operates as a router.

You create a routing table named RT1.

You need to route all inbound traffic to VNet1 through VM1.

How should you configure RT1? To answer, select the appropriate options in the answer area.

NOTE: Each correct selection is worth one point.

Answer Area

Address prefix	10.0.0.0/16 10.0.1.0/24 10.0.254.0/24
Next hop type:	Virtual appliance Virtual network Virtual network gateway
Assigned to:	GatewaySubnet Subnet0 Subnet1 and Subnet2

Answer:

Explanation:

Answer Area

Address prefix	10.0.0.0/16 10.0.1.0/24 10.0.254.0/24
Next hop type:	Virtual appliance Virtual network Virtual network gateway
Assigned to:	GatewaySubnet Subnet0 Subnet1 and Subnet2

Reference:

<https://docs.microsoft.com/en-us/azure/virtual-network/manage-route-table#create-a-route-table>

<https://docs.microsoft.com/en-us/azure/network-watcher/network-watcher-next-hop-overview>

NEW QUESTION # 214

You have an Active Directory domain named contoso.com that contains the objects shown in the following table.

Name	Type	In organizational unit (OU)
User1	User	OU1
User2	User	OU1
User3	User	OU1
Group1	Security Group – Global	OU1
User4	User	OU2
Group2	Security Group – Global	OU2

The groups have the memberships shown in the following table.

Group	Member
Group1	User1
Group2	User2, Group1

OU1 and OU2 are synced to Azure Active Directory (Azure AD).

You modify the synchronization settings and remove OU1 from synchronization. You sync Active Directory and Azure AD. Which objects are in Azure AD?

- A. User4 and Group2 only

- B. User2, Group1, User4, and Group2 only
- C. User1, User2, Group1, User4, and Group2 only
- D. User1, User2, User3, User4, Group1, and Group2

Answer: C

NEW QUESTION # 215

From Azure Active Directory (AD) Privileged Identity Management, you configure the Role settings for the Owner role of an Azure subscription as shown in the following exhibit.

From Azure AD Privileged Identity Management, you assign the Owner role for the subscription to a user named User1, and you set the Assignment type to Active and Permanently eligible.

Use the drop-down menus to select the answer choice that completes each statement based on the information presented in the graphic.

NOTE: Each correct selection is worth one point.

Answer:

Explanation:

Reference:

NEW QUESTION # 216

• • • • •

Test AZ-104 Questions: https://www.dumpkiller.com/AZ-104_braindumps.html

- [illegible]

myportal.utt.edu.tt, myportal.utt.edu.tt, myportal.utt.edu.tt, myportal.utt.edu.tt, myportal.utt.edu.tt, myportal.utt.edu.tt,
Disposable vapes

P.S. Free & New AZ-104 dumps are available on Google Drive shared by Dumpkiller: <https://drive.google.com/open?id=1vBNUszn9BMyqIJEkjv9pBSXvhtmT2Yxm>