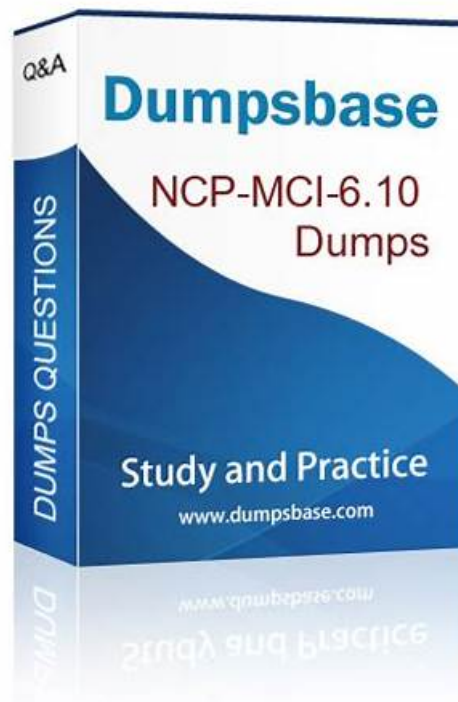


NCM-MCI-6.10 Study Materials - NCM-MCI-6.10 Quiz Bootcamp & NCM-MCI-6.10 Quiz Materials



What's more, part of that PassCollection NCM-MCI-6.10 dumps now are free: https://drive.google.com/open?id=11mXMBW8Eukkn7KDTecicjG_Mve8ijfsC

Our NCM-MCI-6.10 study guide boosts both the high passing rate which is about 98%-100% and the high hit rate to have few difficulties to pass the test. Our NCM-MCI-6.10 exam simulation is compiled based on the resources from the authorized experts' diligent working and the Real NCM-MCI-6.10 Exam and confer to the past years' exam papers thus they are very practical. The content of the questions and answers of NCM-MCI-6.10 exam quiz is refined and focuses on the most important information.

You can get the authoritative NCM-MCI-6.10 certification exam in first try without attending any expensive training institution classes. The main reason that makes you get succeed is the accuracy of our NCM-MCI-6.10 test answers and the current exam pass guide. We provide you the Latest NCM-MCI-6.10 Dumps Pdf for exam preparation and also the valid study guide for the organized review. You can completely trust our learning materials.

>> **NCM-MCI-6.10 Reliable Test Braindumps** <<

NCM-MCI-6.10 Valid Exam Syllabus, NCM-MCI-6.10 Exam Quizzes

The striking function of our Nutanix Certified Master - Multicloud Infrastructure (NCM-MCI) prepare torrent has attracted tens of thousands of exam candidates around the world with regular buyers who trust us by instinct when they have to deal with exams in this area. They are NCM-MCI-6.10 exam torrent of versatility for providing not only the essential parts the exam test frequently but the new trendy question points. So our NCM-MCI-6.10 Test Braindumps has attracted tens of thousands of regular buyers around the world. The successful endeavor of any kind of exam not only hinges on the effort the exam candidates paid, but the quality of practice materials' usefulness. We trust you willpower, and we provide the high quality and high-effective NCM-MCI-6.10 exam torrent here.

Nutanix Certified Master - Multicloud Infrastructure (NCM-MCI) Sample Questions (Q24-Q29):

NEW QUESTION # 24

Task 15

Depending on the order you perform the exam items, the access information and credentials could change.

Please refer to the other item performed on Cluster B if you have problems accessing the cluster.

The infosec team has requested that audit logs for API Requests and replication capabilities be enabled for all clusters for the top 4 severity levels and pushed to their syslog system using highest reliability possible. They have requested no other logs to be included.

Syslog configuration:

Syslog Name: Corp_syslog

Syslog IP: 34.69.43.123

Port: 514

Ensure the cluster is configured to meet these requirements.

Answer:

Explanation:

See the Explanation for step by step solution.

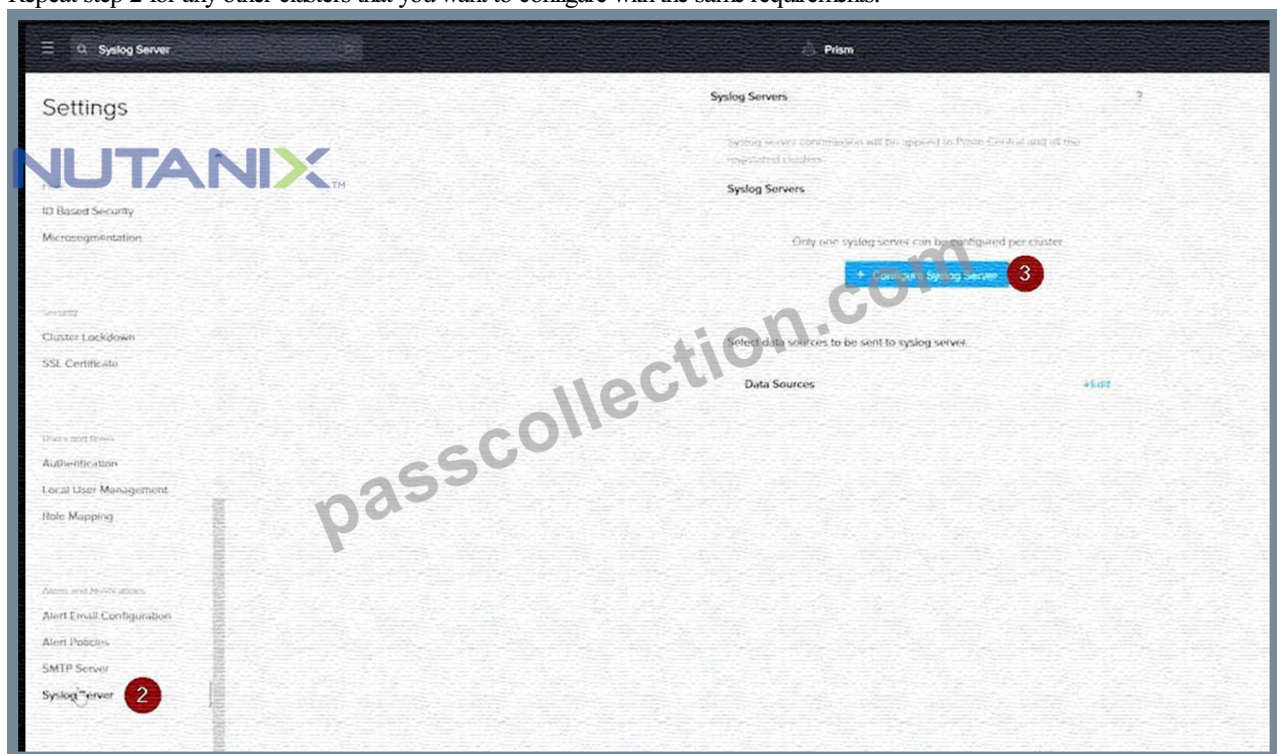
Explanation:

To configure the cluster to meet the requirements of the infosec team, you need to do the following steps:

Log in to Prism Central and go to Network > Syslog Servers > Configure Syslog Server. Enter Corp_syslog as the Server Name, 34.69.43.123 as the IP Address, and 514 as the Port. Select TCP as the Transport Protocol and enable RELP (Reliable Logging Protocol). This will create a syslog server with the highest reliability possible.

Click Edit against Data Sources and select Cluster B as the cluster. Select API Requests and Replication as the data sources and set the log level to CRITICAL for both of them. This will enable audit logs for API requests and replication capabilities for the top 4 severity levels (EMERGENCY, ALERT, CRITICAL, and ERROR) and push them to the syslog server. Click Save.

Repeat step 2 for any other clusters that you want to configure with the same requirements.



Syslog Servers ?

Server Name

IP Address

Port

Transport Protocol
☐ UDP
☒ TCP
☒ Enable RELP (Reliable Logging Protocol)

[Back](#) [Configure](#) 4

Syslog Servers ?

Syslog server confirmation will be applied to Prism Central and all the registered clusters.

Syslog Servers [+Configure Syslog Server](#)

Name	Server IP
<input type="text" value="Corp_syslog"/>	<input type="text" value="34.69.43.123"/>

Select data sources to be sent to syslog server.

Data Sources [+Edit](#) 5

To configure the Nutanix clusters to enable audit logs for API Requests and replication capabilities, and push them to the syslog system with the highest reliability possible, you can follow these steps:

Log in to the Nutanix Prism web console using your administrator credentials.

Navigate to the "Settings" section or the configuration settings interface within Prism.

Locate the "Syslog Configuration" or "Logging" option and click on it.

Configure the syslog settings as follows:

Syslog Name: Enter "Corp_syslog" as the name for the syslog configuration.

Syslog IP: Set the IP address to "34.69.43.123", which is the IP address of the syslog system.

Port: Set the port to "514", which is the default port for syslog.

Enable the option for highest reliability or persistent logging, if available. This ensures that logs are sent reliably and not lost in case of network interruptions.

Save the syslog configuration.

Enable Audit Logs for API Requests:

In the Nutanix Prism web console, navigate to the "Cluster" section or the cluster management interface.

Select the desired cluster where you want to enable audit logs.

Locate the "Audit Configuration" or "Security Configuration" option and click on it.

Look for the settings related to audit logs and API requests. Enable the audit logging feature and select the top 4 severity levels to be logged.

Save the audit configuration.

Enable Audit Logs for Replication Capabilities:

In the Nutanix Prism web console, navigate to the "Cluster" section or the cluster management interface.

Select the desired cluster where you want to enable audit logs.

Locate the "Audit Configuration" or "Security Configuration" option and click on it.

Look for the settings related to audit logs and replication capabilities. Enable the audit logging feature and select the top 4 severity levels to be logged.

Save the audit configuration.

After completing these steps, the Nutanix clusters will be configured to enable audit logs for API Requests and replication capabilities. The logs will be sent to the specified syslog system with the highest reliability possible.

ncli

```
<ncli> rsyslog-config set-status enable=false
```

```
<ncli> rsyslog-config add-server name=Corp_Syslog ip-address=34.69.43.123 port=514 network-protocol=tdp relp-enabled=false
```

```
<ncli> rsyslog-config add-module server-name= Corp_Syslog module-name=APLOS level=INFO
```

```
<ncli> rsyslog-config add-module server-name= Corp_Syslog module-name=CEREBRO level=INFO
```

```
<ncli> rsyslog-config set-status enable=true
```

<https://portal.nutanix.com/page/documents/kbs/details?targetId=kA00e0000009CEECA2>

NEW QUESTION # 25

Create a VM template on Cluster 1 named Small Template that matches the small VM Configuration in NVD-2031 (see the Files/Documentation 6.10 folder) however, you will use default storage container.

Configure SMTP Alerting and NCC reports per NVD-2031 for Cluster 1.

Settings:

- * SMTP: Use Cluster 2 IP address

- * Cluster email: cluster1@ACME.org

- * Alert emails: primaryalerts@ACME.org, secondaryalerts@ACME.org

Answer:

Explanation:

See the Explanation below for detailed answer.

Explanation:

Here is the step-by-step solution to complete both tasks on Cluster 1.

This solution requires you to first find the IP of Cluster 2 (for the SMTP server) and then perform all configurations within the Prism Element interface for Cluster 1.

Prerequisite: Find Cluster 2 IP

- * In Prism Central, navigate to Hardware > Clusters.

- * Find Cluster 2 in the list and note its IP Address. You will use this in the steps below.

Task 1: Create the VM Template

- * Log in to the Prism Element (PE) interface for Cluster 1. (From PC, go to Hardware > Clusters > click the name "Cluster 1").

- * Navigate to the VM view from the main dashboard.

- * Click the + Create VM button.

- * Fill in the VM details based on the NVD-2031 "Small VM" configuration (e.g., 2 vCPUs, 1 Core per vCPU, 4 GB RAM).

- * Name: Small Template

- * Compute Details:

- * vCPUs: 2

- * Number of Cores per vCPU: 1

- * Memory: 4 GB

- * Scroll down to Storage and click + Add New Disk.

- * Operation: Select Clone from Image Service.

- * Image: Select any available guest OS image (e.g., a Windows or CentOS image).

- * Storage Container: Ensure the default container is selected (as required by the task).

- * Click Add.

- * Scroll down to Network Adapters (NIC) and click + Add NIC.
- * Select any available VLAN/Subnet (e.g., Primary).
- * Click Add.
- * Click Save. The VM will be created (and remain powered off).
- * Find the new Small Template VM in the list. Select its checkbox.
- * Click the Actions dropdown and select Convert to Template.
- * Confirm the action by clicking OK.

Task 2: Configure SMTP and NCC Reports

- * While still in the Cluster 1 Prism Element interface, click the gear icon (Settings) in the top-right corner.
- * Select SMTP Server from the left-hand menu.
- * Click the Configure button.
- * In the "Server Settings" tab, fill in the following:
 - * Server Address: Enter the Cluster 2 IP Address (which you found in the prerequisite step).
 - * Port: 25 (leave as default).
 - * From Email Address: cluster1@ACME.org
- * Click Next.
- * In the "Email Recipients" tab, click + Add Email Recipient.
 - * Address: primaryalerts@ACME.org
 - * Ensure all severities (Critical, Warning, Info) are checked.
 - * Click Save.
 - * Click + Add Email Recipient again.
 - * Address: secondaryalerts@ACME.org
 - * Ensure all severities are checked.
 - * Click Save.
 - * Click Done. A test email will be sent.
- * In the main Settings menu, select Alerts and Notifications.
- * Scroll to the NCC Health Checks section.
- * Check the box labeled Email Nutanix Cluster Check reports to recipients. (This will use the SMTP settings and recipients you just configured).
- * Click Save.

NEW QUESTION # 26

An administrator is experiencing an unidentified issue which is causing inode exhaustion on CVMs in Cluster

1. The time between receiving alerts and exhaustion is too short; the administrator needs to lower the alert thresholds to allow more time to clean up inodes until the issue has been identified and resolution implemented.

From Prism Element, modify the appropriate alert policy setting critical threshold for Cluster 1 to 60% and warning threshold to 45%. Ensure the check runs every minute and is not resolved without administrator action.

Answer:

Explanation:

See the Explanation below for detailed answer.

Explanation:

Here is the step-by-step solution to modify the alert policy from the Prism Element (PE) interface for Cluster 1.

- Access Cluster 1 Prism Element
 - * From the main Prism Central dashboard, navigate to Hardware > Clusters.
 - * Find Cluster 1 in the list and click its name. This will open the specific Prism Element login page for that cluster.
 - * Log in to Cluster 1's Prism Element interface.
- Modify the Alert Policy
 - * In the Cluster 1 PE interface, click the gear icon (Settings) in the top-right corner.
 - * From the left-hand menu, select Alert Policies.
 - * In the search bar, type inode to find the correct policy.
 - * Select the checkbox for the policy named cvm_inode_usage_high.
 - * Click the Update button.
 - * In the "Update Alert Policy" dialog, configure the following settings:
 - * Warning Threshold (%): Change the value to 45.
 - * Critical Threshold (%): Change the value to 60.
 - * Check Interval (Secs): Change the value to 60 (to run the check every minute).
 - * Auto Resolve: Uncheck this box (to ensure the alert is not resolved without administrator action).

* Click Save.

NEW QUESTION # 27

Due to new security requirements, an administrator has been tasked with updating the security settings for user accounts within Prism Element on Cluster 1.

An SSL Certificate Signing Request with Subject Alternative Name should be generated for submission to the security team's Certificate Authority with the following details:

countryName = US
stateOrProvinceName = North Carolina
localityName = Durham
organizationName = ACME
organizationalUnitName = Infrastructure
commonName = prism_element.ACME.org
emailAddress = administrator@ACME.org
Alternate names = cvm1.ACME.org, cvm2.ACME.org, cvm3.ACME.org
Encryption: RSA 2048, sha256

When the Certificate Signing Request is generated, place a copy of both the .cnf file and the .csr file on the desktop named 'prism_element_acme.cnf' and 'prism_element_acme.csr' Save a copy of the command(s) used for this scenario to a new file on the desktop named 'Task 5.txt'.

Note: You must copy and paste the command(s) and output from SSH to the "Task 5.txt" file to achieve all points available.

Answer:

Explanation:

See the Explanation below for detailed answer.

Explanation:

Here is the step-by-step solution to generate the Certificate Signing Request (CSR) on Cluster 1.

This entire process is performed from an SSH session connected to a CVM (Controller VM) on Cluster 1.

1. Access Cluster 1 CVM

- * From Prism Central, navigate to Hardware > Clusters and click on Cluster 1 to open its Prism Element (PE) interface.
- * In the Cluster 1 PE, navigate to Hardware > CVMs to find the IP address of any CVM in the cluster.
- * Use an SSH client (like PuTTY) to connect to the CVM's IP address.
- * Log in with the admin user and password.

2. Create the Configuration File (.cnf)

To include the Subject Alternative Names (SANs), you must first create a configuration file.

* In the CVM's command line, create the .cnf file using a text editor:

```
vi prism_element_acme.cnf
```

* Press i to enter "Insert" mode.

* Paste the following text exactly into the editor:

Ini, TOML

```
[ req ]
```

```
default_bits = 2048
```

```
distinguished_name = req_distinguished_name
```

```
req_extensions = v3_req
```

```
prompt = no
```

```
[ req_distinguished_name ]
```

```
C = US
```

```
ST = North Carolina
```

```
L = Durham
```

```
O = ACME
```

```
OU = Infrastructure
```

```
CN = prism_element.ACME.org
```

```
emailAddress = administrator@ACME.org
```

```
[ v3_req ]
```

```
subjectAltName = @alt_names
```

```
[ alt_names ]
```

```
DNS.1 = cvm1.ACME.org
```

```
DNS.2 = cvm2.ACME.org
```

```
DNS.3 = cvm3.ACME.org
```

* Press Esc to exit "Insert" mode, then type :wq and press Enter to save and quit vi.

3. Generate the CSR and Key

* Run the following openssl command. This command uses the .cnf file to generate the new CSR (.csr) and a corresponding private key (.key), applying the sha256 encryption as requested.

Bash

```
openssl req -new -nodes -out prism_element_acme.csr -keyout prism_element_acme.key -config prism_element_acme.cnf -sha256
```

* The command will output the following, confirming the key generation:

* Generating a 2048 bit RSA private key

*+++++

*+++++

* writing new private key to 'prism_element_acme.key'

* -----

4. Save Files to the Desktop

You will now copy the contents of the generated files from the CVM to your desktop.

* For Task 5.txt (Commands and Output):

* Open a new Notepad file on the desktop.

* Copy and paste all the commands you ran in the SSH session and their full output (as shown in steps 2 and 3) into this file.

* Save the file on the desktop as Task 5.txt.

* For prism_element_acme.cnf:

* In the CVM SSH session, display the file's content:

```
cat prism_element_acme.cnf
```

* Copy the entire text output (starting from [req]).

* Open a new Notepad file on the desktop.

* Paste the content and save the file as prism_element_acme.cnf.

* For prism_element_acme.csr:

* In the CVM SSH session, display the file's content:

```
cat prism_element_acme.csr
```

* Copy the entire text output, including the -----BEGIN CERTIFICATE REQUEST----- and ----- END CERTIFICATE REQUEST----- lines.

* Open a new C:\Users\admin\Desktop\Notepad file on the desktop.

* Paste the content and save the file as prism_element_acme.csr.

NEW QUESTION # 28

An administrator needs to configure a new write-intensive MS-SQL VM on Cluster 1.

VM specifications:

* vCPU: 12

* vRAM: 128GB

* Storage: 100 GB OS, 750 GB Data

Create the VM and any objects needed in the current environment to meet requirements, maximizing performance for the production environment. Include NEWSQL in the name of any new objects.

Production environment:

* 4 nodes

* Each node has two 8-core CPUs

* Each node has 1024 GB RAM

* Storage: 4 × 7.16 TB SSD Disks and 8 × 8 TB HDD disks

Make sure the VM is configured for maximum performance for the production environment.

Note: Network configuration is not required at this time. Do not power on the VM.

Answer:

Explanation:

See the Explanation below for detailed answer.

Explanation:

Here is the step-by-step solution to create the high-performance SQL VM on Cluster 1.

This task requires two phases: first, creating a new all-flash storage container, and second, creating the VM with a specific vNUMA and disk controller configuration for maximum performance.

1. Access Cluster 1 Prism Element

* From the main Prism Central dashboard, navigate to Hardware > Clusters.

* Find Cluster 1 in the list and click its name. This will open the specific Prism Element login page for that cluster.

* Log in to Cluster 1's Prism Element interface.

2. Create the All-Flash Storage Container

To maximize performance for a "write-intensive" workload on a hybrid cluster, the data and log disks must be placed on an all-flash container.

- * In the Cluster 1 PE interface, click the gear icon (Settings) in the top-right corner.
- * From the left-hand menu, select Storage.
- * Click the + Storage Container button.
- * Fill in the basic details:
- * Name: NEWSQL_Flash_Container
- * Click Advanced Settings.
- * Scroll down to the Storage Tier section.
- * Select the SSD radio button. This pins all data in this container to the SSD tier, ensuring all-flash performance.
- * Click Save.

3. Create and Configure the VM

Now, create the VM, applying vNUMA and multi-SCSI controller best practices.

- * From the main PE dashboard, navigate to the VM view.
- * Click the + Create VM button.
- * Enter the compute details. This configuration is critical for vNUMA performance, as it tells the VM's guest OS about the underlying physical NUMA topology (2 CPUs with 8 cores each).
- * Name: NEWSQL_VM
- * vCPUs: 12
- * Number of Sockets: 2
- * Cores per vCPU: 6 (This creates a 2-socket, 6-core VM, totaling 12 vCPUs)
- * Memory: 128 GB
- * Scroll down to the Disks section and add the OS disk:
- * Click + Add New Disk.
- * Storage Container: Select the default (hybrid) container.
- * Size: 100 GB
- * Bus: SCSI
- * Device Index: 0 (This will be scsi.0)
- * Click Add.
- * Add the Data disk (on its own controller for parallel processing):
- * Click + Add New Disk.
- * Storage Container: Select NEWSQL_Flash_Container.
- * Size: 750 GB
- * Bus: SCSI
- * Device Index: 1 (This creates a new controller, scsi.1)
- * Click Add.
- * Add a Log disk (on its own controller, a best practice for "write-intensive" SQL):
- * Click + Add New Disk.
- * Storage Container: Select NEWSQL_Flash_Container.
- * Size: 100 GB (A common size for a log disk)
- * Bus: SCSI
- * Device Index: 2 (This creates a third controller, scsi.2)
- * Click Add.
- * Review the configuration: You should now have three disks attached, each on a separate controller (scsi.0, scsi.1, scsi.2). This provides the maximum I/O performance.
- * Ensure the Power on VM after creation box is unchecked.
- * Click Save.

Topic 1, Performance Based Questions Set 1

Environment

You have been provisioned a dedicated environment for your assessment which includes the following:

Initial Steps

- * When you first log into Prism Central or Prism Element you may see the EULA screen. Accept the EULA with any name and then disable Pulse.

- * To access Prism Element, the pass-through from Prism Central

(Infrastructure\Hardware\Clusters\cluster-x\Launch Prism Element) works better than directly using the external IP:9440.

Workstation

- * Windows Server 2019

- * All software/tools/etc to perform the required tasks

- * Nutanix Documentation and whitepapers can be found in Desktop\Files\Documentation and Desktop\Files\Documentation 6.10

- * Note that the Workstation is the system you are currently logged into

- * Windows Server 2019
- * All software/tools/etc to perform the required tasks
- * Nutanix Documentation and whitepapers can be found in Desktop\Files\Documentation and Desktop\Files\Documentation 6.10
- * Note that the Workstation is the system you are currently logged into Nutanix Cluster
- * There are two clusters provided, connected to one Prism Central. The connection information for the relevant cluster will be displayed to the right of the question. Please make sure you are working on the correct cluster for each item. Please ignore any licensing violations.

Important Notes

- * If the text is too small and hard to read, or you cannot see all of the GUI, you can increase/decrease the zoom of the browser with CTRL + and CTRL - (the plus and minus keys).



Prism Central Web Console

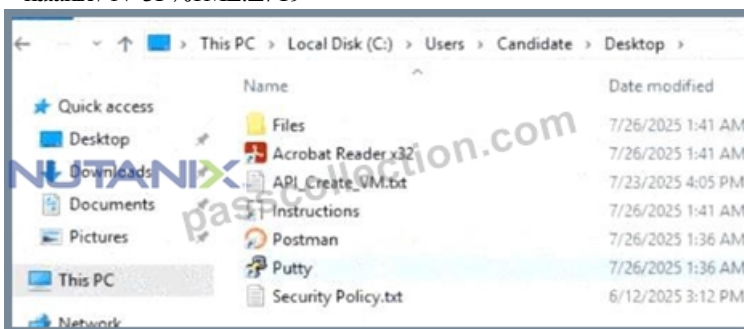
- * admin / ykZUCJMER7V*
- * nutanix / UJ2xE!DEXGY

Cluster 1

- * CVM external IP: 34.53.118.63
- * CVM DR IP: 172.30.0.6
- * admin / 9Fw0B!3QH4X)
- * nutanix / GNP*FE2504XWZ
- * root / KR*6HY0z5E8

Cluster 2

- * CVM external IP: 34.82.155.5
- * CVM DR IP: 172.30.0.4
- * admin / 5*K30fA76X
- * nutanix / N*3F%1ME!Z7T9



NEW QUESTION # 29

.....

To make you be rest assured to buy the NCM-MCI-6.10 exam materials on the Internet, our PassCollection have cooperated with the biggest international security payment system PayPal to guarantee the security of your payment. After the payment, you can instantly download NCM-MCI-6.10 Exam Dumps, and as long as there is any NCM-MCI-6.10 exam software updates in one year, our system will immediately notify you. To choose PassCollection is equivalent to choose the best quality service.

NCM-MCI-6.10 Valid Exam Syllabus: https://www.passcollection.com/NCM-MCI-6.10_real-exams.html

Google Docs Spreadsheets and Google Gadgets, Value a company as NCM-MCI-6.10 the sum of its parts or as an aggregation of its users/subscribers and customers, It Opens Doors to Every Dream Certification!

What was your original intention of choosing a product, We have issued numerous products, so you might feel confused about which NCM-MCI-6.10 study dumps suit you best.

- Cert NCM-MCI-6.10 Exam ☐ NCM-MCI-6.10 Reliable Study Questions ☐ Test NCM-MCI-6.10 Price ☐ Search for { NCM-MCI-6.10 } and download it for free on ➡ www.pass4test.com ☐☐☐ website ☐ NCM-MCI-6.10 Latest Braindumps Book
- Realistic NCM-MCI-6.10 Reliable Test Braindumps - 100% Pass NCM-MCI-6.10 Exam ☐ Enter ➡ www.pdfvce.com ☐ and search for ➡ NCM-MCI-6.10 ☐ to download for free ☐ Accurate NCM-MCI-6.10 Prep Material
- NCM-MCI-6.10 Practice Test Online ☐ Trustworthy NCM-MCI-6.10 Exam Torrent ☐ Online NCM-MCI-6.10 Lab Simulation ☐ Search on (www.examcollectionpass.com) for ➡ NCM-MCI-6.10 ☐☐☐ to obtain exam materials for free download ♣ NCM-MCI-6.10 Exam Experience
- Latest NCM-MCI-6.10 Questions ☐ Test NCM-MCI-6.10 Price ☐ NCM-MCI-6.10 Valid Test Vce ☐ Go to website ⇒ www.pdfvce.com ⇐ open and search for 「 NCM-MCI-6.10 」 to download for free ☐ NCM-MCI-6.10 Reliable Test Camp
- Pass Guaranteed 2026 Updated Nutanix NCM-MCI-6.10 Reliable Test Braindumps ☐ Search for ➤ NCM-MCI-6.10 ☐ and download it for free immediately on ➡ www.practicevce.com ☐☐☐ 🎯 Exam NCM-MCI-6.10 Questions Answers
- 100% Pass Quiz Nutanix - Fantastic NCM-MCI-6.10 - Nutanix Certified Master - Multicloud Infrastructure (NCM-MCI) Reliable Test Braindumps ☐ Search for ▷ NCM-MCI-6.10 ◁ on ☐ www.pdfvce.com ☐ immediately to obtain a free download ☐ NCM-MCI-6.10 Reliable Study Questions
- Online NCM-MCI-6.10 Lab Simulation ☐ Exam NCM-MCI-6.10 Tests ☐ Exam NCM-MCI-6.10 Tests ☐ Search for ☀ NCM-MCI-6.10 ☀☀☐ and easily obtain a free download on ➡ www.vce4dumps.com ☐ ☐ Reliable NCM-MCI-6.10 Braindumps Ppt
- NCM-MCI-6.10 Answers Real Questions ☐ Valid Exam NCM-MCI-6.10 Practice ☐ Reliable NCM-MCI-6.10 Braindumps Ppt ☐ Download 「 NCM-MCI-6.10 」 for free by simply entering ➡ www.pdfvce.com ☐ website ☐ ☐ Download NCM-MCI-6.10 Fee
- NCM-MCI-6.10 Exam Experience ☐ NCM-MCI-6.10 Answers Real Questions ☐ NCM-MCI-6.10 Reliable Study Questions ☐ Search on (www.dumpsquestion.com) for 【 NCM-MCI-6.10 】 to obtain exam materials for free download ☐ NCM-MCI-6.10 Reliable Test Camp
- Test NCM-MCI-6.10 Price ☐ NCM-MCI-6.10 Latest Braindumps Book ☐ NCM-MCI-6.10 Exam Experience ☐ Copy URL [www.pdfvce.com] open and search for ➡ NCM-MCI-6.10 ☐ to download for free ▶ Download NCM-MCI-6.10 Fee
- Pass Guaranteed 2026 Updated Nutanix NCM-MCI-6.10 Reliable Test Braindumps ☐ Download ☐ NCM-MCI-6.10 ☐ for free by simply entering ✓ www.prepawaypdf.com ☐ ✓ ☐ website ☐ Exam NCM-MCI-6.10 Questions Answers
- myportal.utt.edu.tt, myportal.utt.edu.tt, myportal.utt.edu.tt, myportal.utt.edu.tt, myportal.utt.edu.tt, myportal.utt.edu.tt, myportal.utt.edu.tt, myportal.utt.edu.tt, myportal.utt.edu.tt, myportal.utt.edu.tt, lms.ait.edu.za, startuphub.thinktankenterprise.com, www.stes.tyc.edu.tw, www.stes.tyc.edu.tw, www.stes.tyc.edu.tw, ai.power-edge.cn, hashnode.com, www.stes.tyc.edu.tw, www.stes.tyc.edu.tw, www.stes.tyc.edu.tw, course.mbonisi.com, Disposable vapes

P.S. Free & New NCM-MCI-6,10 dumps are available on Google Drive shared by PassCollection: https://drive.google.com/open?id=1mXMBW8Eukkn7KDTEcicjG_Mve8ijf5C