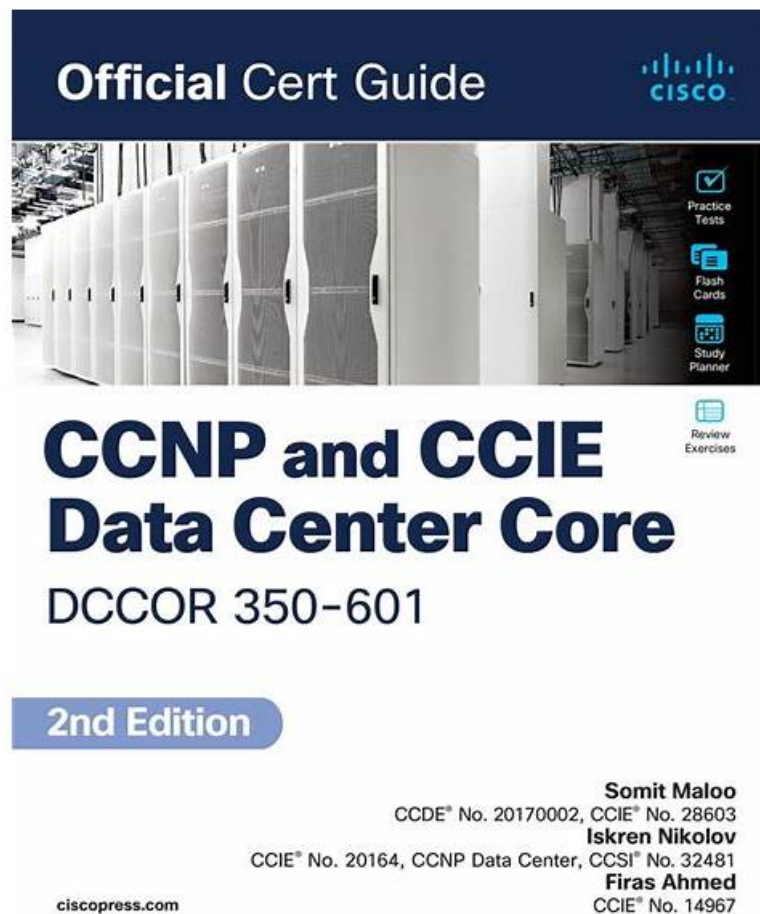


Free PDF 350-601 - Marvelous Exams Implementing Cisco Data Center Core Technologies (350-601 DCCOR) Torrent



BTW, DOWNLOAD part of CertkingdomPDF 350-601 dumps from Cloud Storage: <https://drive.google.com/open?id=19LFW-zfqJmgs-lr3O3hYfDYmDOKtA1a>

Are you looking for the best study materials for the Implementing Cisco Data Center Core Technologies (350-601 DCCOR) exam? CertkingdomPDF is the only place to go! You may be fully prepared to pass the Implementing Cisco Data Center Core Technologies (350-601 DCCOR) (350-601) test with their comprehensive Cisco 350-601 exam questions. CertkingdomPDF provides the Implementing Cisco Data Center Core Technologies (350-601 DCCOR) (350-601) Exam Questions and answers guide in PDF format, making it simple to download and use on any device. You can study at your own pace and convenience with the Cisco 350-601 PDF Questions, without having to attend any in-person seminars. This means you may study for the 350-601 exam from the comfort of your own home whenever you want.

CertkingdomPDF can provide you a pertinence training and high quality exercises, which is your best preparation for your first time to attend Cisco certification 350-601 exam. CertkingdomPDF's exercises are very similar with the real exam, which can ensure you a successful passing the Cisco Certification 350-601 Exam. If you fail the exam, we will give you a full refund.

>>> Exams 350-601 Torrent <<<

Famous 350-601 Exam Guide: Implementing Cisco Data Center Core Technologies (350-601 DCCOR) Bring You Pass-Guaranteed Training Dumps - CertkingdomPDF

We hope this article has given you a good overview of the Cisco 350-601 Exam and what you can expect from it. As always, we recommend you start preparing for your exam as early as possible to give yourself the best chance of success. CertkingdomPDF offers a wide range of study materials and resources to help you prepare, including practice questions, dumps, and a study guide.

Cisco Implementing Cisco Data Center Core Technologies (350-601 DCCOR) Sample Questions (Q223-Q228):

NEW QUESTION # 223

An engineer is implementing NetFlow on a Cisco Nexus 7000 Series Switch. Drag and drop the NetFlow commands from the left into the correct order they must be entered on the right.

N7K-1(config)# interface <interface>
N7K-1(config-if)# ip flow monitor NetflowMonitor input

N7K-1(config)# feature netflow

N7K-1(config)# flow exporter NetflowMonitor
N7K-1(config)# flow record NetflowMonitor

N7K-1(config)# flow monitor NetflowMonitor

Step 1

Step 2

Step 3

Step 4

Answer:

Explanation:

N7K-1(config)# interface <interface>
N7K-1(config-if)# ip flow monitor NetflowMonitor input

N7K-1(config)# feature netflow

N7K-1(config)# flow exporter NetflowMonitor
N7K-1(config)# flow record NetflowMonitor

N7K-1(config)# flow monitor NetflowMonitor

N7K-1(config)# feature netflow

N7K-1(config)# flow exporter NetflowMonitor
N7K-1(config)# flow record NetflowMonitor

N7K-1(config)# flow monitor NetflowMonitor

N7K-1(config)# interface <interface>
N7K-1(config-if)# ip flow monitor NetflowMonitor input

Explanation

- 1- feature netflow
- 2- flow exporter
- 3- flow monitor
- 4- interface<interface>

NEW QUESTION # 224

Refer to the exhibit.

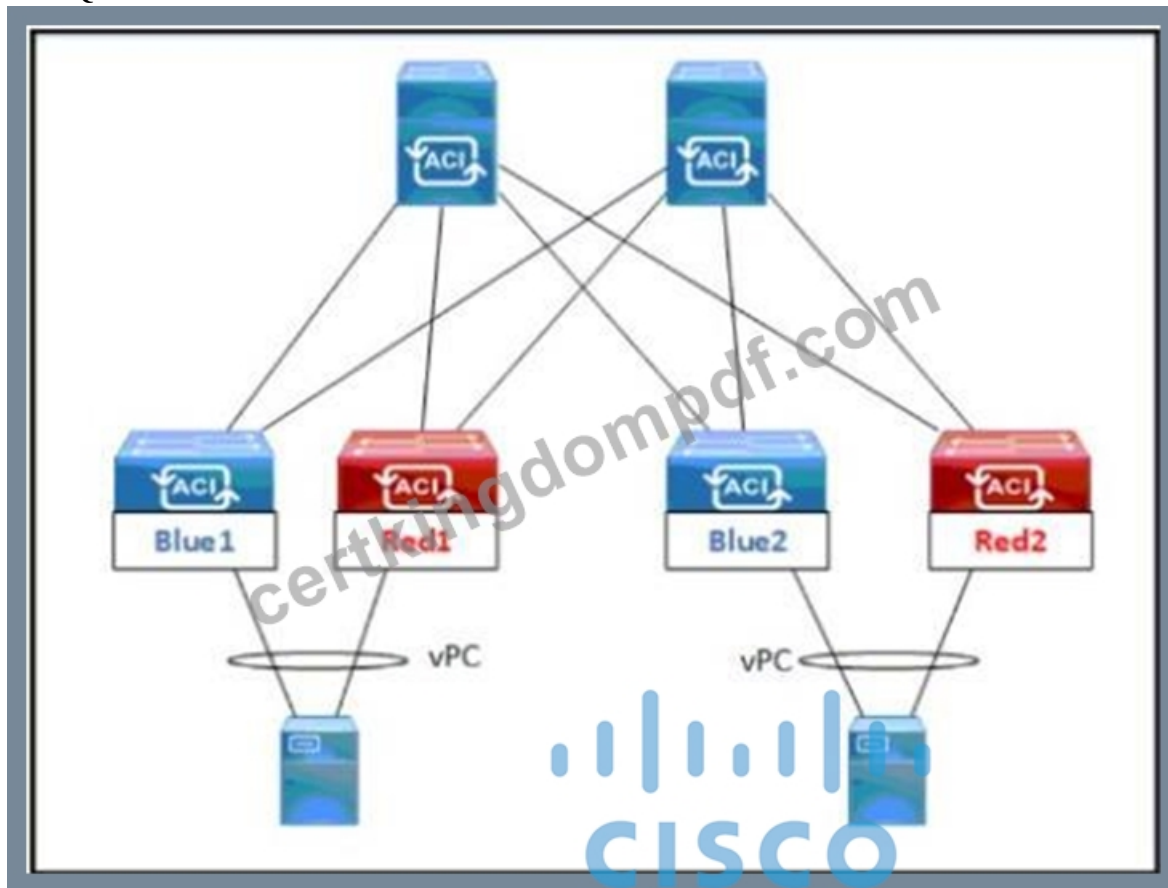
restart pim

Which result of running the command is true?

- A. MRIB is flushed
- B. Multicast traffic forwarding is suspended.
- C. The PIM database is deleted.
- D. PIM join messages are suspended.

Answer: C

NEW QUESTION # 225



Refer to the exhibit. An engineer must schedule the firmware upgrade of the Red1 and Red2 leaf switches. The requirement is to keep the upgrade time to the minimum, avoid any service impact, and perform the parallel upgrade. Which set of scheduler attributes must be used to meet these requirements?

- ☐ • Configure SchedulerPolicy1 for all four leaf switches Blue1, Blue2, Red1, and Red2.
 - ☐ • Configure SchedulerPolicy1 and SchedulerPolicy2 with a one-time window trigger that has maximum concurrent nodes 1.
 - ☐ • Configure SchedulerPolicy1 for leaf switches Blue1 and Red1, and SchedulerPolicy2 for leaf switches Blue2 and Red2.
 - ☐ • Configure SchedulerPolicy1 and SchedulerPolicy2 with a one-time window trigger that has maximum concurrent nodes 2.
 - ☐ • Configure SchedulerPolicy1 for all four leaf switches Blue1, Blue2, Red1, and Red2.
 - ☐ • Configure SchedulerPolicy1 and SchedulerPolicy2 with a one-time window trigger that has maximum concurrent nodes 2.
 - ☐ • Configure SchedulerPolicy1 for leaf switches Blue1 and Red1, and SchedulerPolicy2 for leaf switches Blue2 and Red2.
 - ☐ • Configure SchedulerPolicy1 and SchedulerPolicy2 with a one-time window trigger that has maximum concurrent nodes 1.
- A. Option C
 - B. Option A
 - C. Option D
 - **D. Option B**

Answer: D

Explanation:

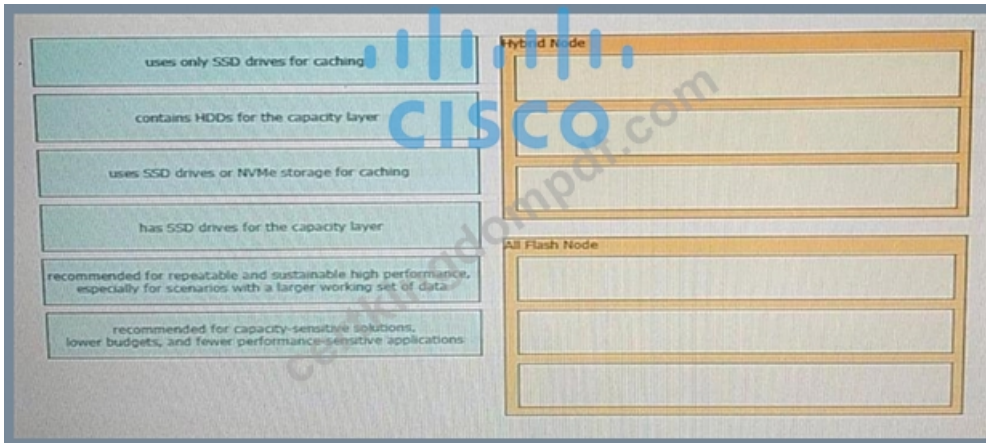
To schedule the firmware upgrade of the Red1 and Red2 leaf switches with the requirements of minimal upgrade time, no service impact, and parallel upgrade, SchedulerPolicy1 and SchedulerPolicy2 with a one-time window trigger that has maximum concurrent nodes 2 should be used. This allows both Red1 and Red2 to upgrade simultaneously within the same maintenance window, thus minimizing the time and avoiding any service disruption.

References := Further details can be found in the Cisco Data Center Core Technologies documentation

NEW QUESTION # 226

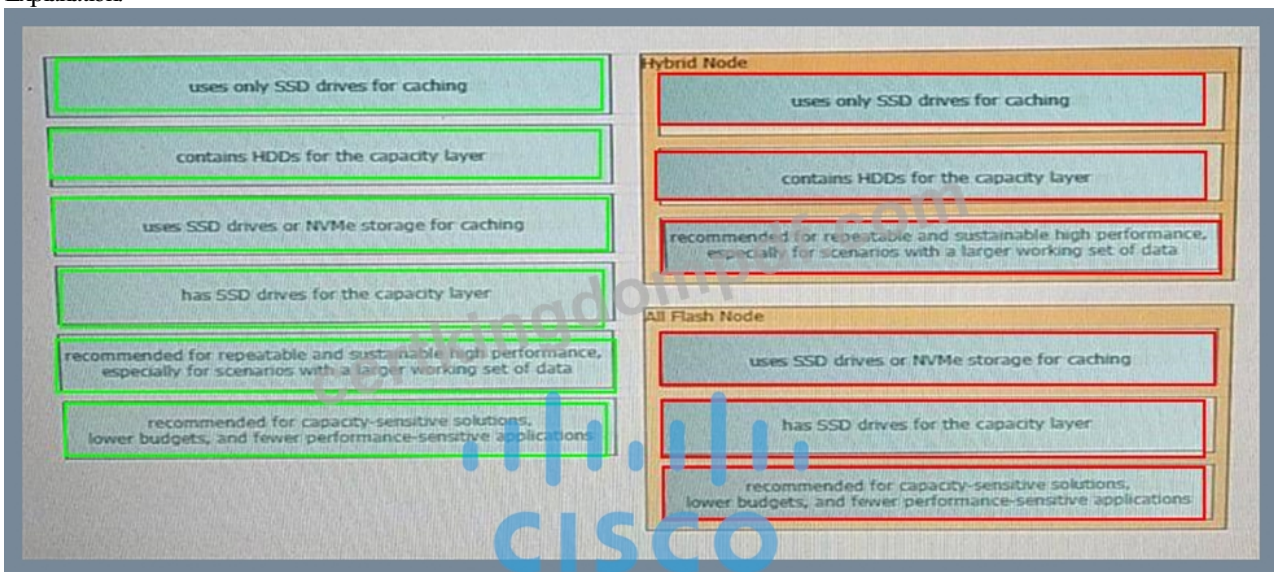
Drag and drop the hyperflex characteristics from the left onto the appropriate. HyperFlex Node types on the right. Not all options

are used.



Answer:

Explanation:



NEW QUESTION # 227

An engineer installed a new Nexus switch with the `mgm0` interface in `vrf management`. Connectivity to the rest of the network needs to be tested from the guest shell of the NX-OS. Which command tests connectivity from the shell of the NX-OS?



- A. Option C
- B. Option A
- C. Option D
- **D. Option B**

Answer: D

NEW QUESTION # 228

.....

Computers are getting faster and faster, which provides us great conveniences and all possibilities in our life and work. IT jobs are

Exam 350-601 Vce: <https://www.certkingdompdf.com/350-601-latest-certkingdom-dumps.html>

Having years of experience is not necessarily the criterion 350-601 for a good mentor, either, I knew some people were poorer and some people were richer, Also, our 350-601 Practice Exam has timed mock test, which enables you to manage time accordingly and it's real exam simulation helps you to pass 350-601 exam on the first try.

You can find latest 350-601 Exam Sims test answers and questions in our pass guide and the detailed explanations will help you understand the content easier, You just spend your spare Certification 350-601 Exam Infor time to review Implementing Cisco Data Center Core Technologies (350-601 DCCOR) real dumps and Implementing Cisco Data Center Core Technologies (350-601 DCCOR) pdf vce, you will pass real test easily.

[illegible]

BTW, DOWNLOAD part of CertkingdomPDF 350-601 dumps from Cloud Storage: <https://drive.google.com/open?id=19LFW-zfqJmgs-lr3O3hYfDYmDoktA1a>