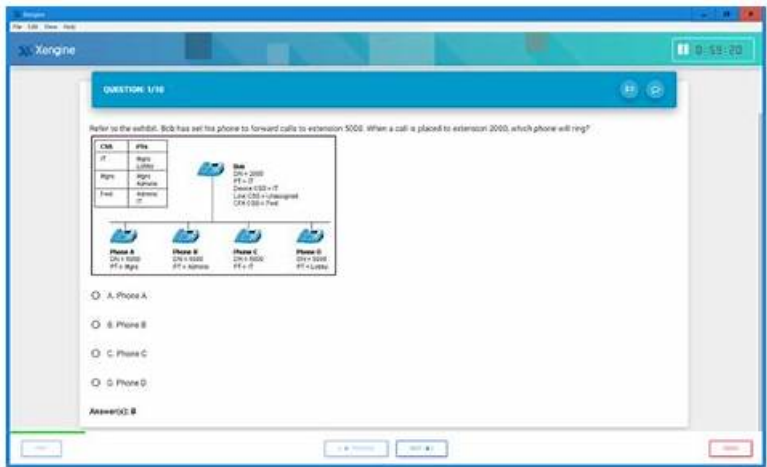


# PSE-Strata-Pro-24 Exam Questions Dumps, Palo Alto Networks Systems Engineer Professional - Hardware Firewall VCE Collection



P.S. Free 2026 Palo Alto Networks PSE-Strata-Pro-24 dumps are available on Google Drive shared by Real4test: [https://drive.google.com/open?id=1nDn6xTs-g6\\_UzzhYv1xnKbpUt\\_jeY8qs](https://drive.google.com/open?id=1nDn6xTs-g6_UzzhYv1xnKbpUt_jeY8qs)

Since the content of the examination is also updating daily, you will need real and latest Palo Alto Networks PSE-Strata-Pro-24 Exam Dumps to prepare successfully for the PSE-Strata-Pro-24 certification exam in a short time. People who don't study from updated Palo Alto Networks PSE-Strata-Pro-24 Questions fail the examination and loss time and money.

All Of Palo Alto Networks staff knows it is very difficult to get Palo Alto Networks certificate. But taking Palo Alto Networks certification exam and getting the certificate are a way to upgrade your ability and prove self-worth, so you have to choose to get the certificate. Isn't there an easy way to help all candidates pass their exam successfully? Of course there is. PSE-Strata-Pro-24 Exam Dumps are the best way. Real4test has everything you need and can absolutely satisfy your demands. You can visit Real4test.com to know more details and find the exam materials you want to.

>> PSE-Strata-Pro-24 Valid Cram Materials <<

## Palo Alto Networks PSE-Strata-Pro-24 PDF Question - Reliable PSE-Strata-Pro-24 Test Syllabus

One of features of PSE-Strata-Pro-24 training materials of us is that we can help you pass the exam just one time, and we also pass guarantee and money back guarantee for you fail to pass the exam. You just need to send your failure scanned to us, and we will give you full refund. In addition, PSE-Strata-Pro-24 exam dumps contain both questions and answers, which can help you have a quickly check after you finish your practice. We also have online and offline chat service stuff, they possess the professional knowledge about the PSE-Strata-Pro-24 Training Materials, if you have any questions just contact us.

## Palo Alto Networks PSE-Strata-Pro-24 Exam Syllabus Topics:

Topic	Details
Topic 1	<ul style="list-style-type: none"><li>Business Value and Competitive Differentiators: This section of the exam measures the skills of Technical Business Value Analysts and focuses on identifying the value proposition of Palo Alto Networks Next-Generation Firewalls (NGFWs). Candidates will assess the technical business benefits of tools like Panorama and SCM. They will also recognize customer-relevant topics and align them with Palo Alto Networks' best solutions. Additionally, understanding Strata's unique differentiators is a key component of this domain.</li></ul>

Topic 2	<ul style="list-style-type: none"> <li>Architecture and Planning: This section of the exam measures the skills of Network Architects and emphasizes understanding customer requirements and designing suitable deployment architectures. Candidates must explain Palo Alto Networks' platform networking capabilities in detail and evaluate their suitability for various environments. Handling aspects like system sizing and fine-tuning is also a critical skill assessed in this domain.</li> </ul>
Topic 3	<ul style="list-style-type: none"> <li>Deployment and Evaluation: This section of the exam measures the skills of Deployment Engineers and focuses on identifying the capabilities of Palo Alto Networks NGFWs. Candidates will evaluate features that protect against both known and unknown threats. They will also explain identity management from a deployment perspective and describe the proof of value (PoV) process, which includes assessing the effectiveness of NGFW solutions.</li> </ul>
Topic 4	<ul style="list-style-type: none"> <li>Network Security Strategy and Best Practices: This section of the exam measures the skills of Security Strategy Specialists and highlights the importance of the Palo Alto Networks five-step Zero Trust methodology. Candidates must understand how to approach and apply the Zero Trust model effectively while emphasizing best practices to ensure robust network security.</li> </ul>

## Palo Alto Networks Systems Engineer Professional - Hardware Firewall Sample Questions (Q11-Q16):

### NEW QUESTION # 11

Which two actions can a systems engineer take to discover how Palo Alto Networks can bring value to a customer's business when they show interest in adopting Zero Trust? (Choose two.)

- A. Explain how Palo Alto Networks can place virtual NGFWs across the customer's network to ensure assets and traffic are seen and controlled.
- B. Ask the customer about their internal business flows, such as how their users interact with applications and data across the infrastructure.
- C. Ask the customer about their approach to Zero Trust, explaining that it is a strategy more than it is something they purchase.
- D. Use the Zero Trust Roadshow package to demonstrate to the customer how robust Palo Alto Networks capabilities are in meeting Zero Trust.

**Answer: B,C**

Explanation:

To help a customer understand how Palo Alto Networks can bring value when adopting a Zero Trust architecture, the systems engineer must focus on understanding the customer's specific needs and explaining how the Zero Trust strategy aligns with their business goals. Here's the detailed analysis of each option:

\* Option A: Ask the customer about their internal business flows, such as how their users interact with applications and data across the infrastructure

\* Understanding the customer's internal workflows and how their users interact with applications and data is a critical first step in Zero Trust. This information allows the systems engineer to identify potential security gaps and suggest tailored solutions.

\* This is correct.

\* Option B: Explain how Palo Alto Networks can place virtual NGFWs across the customer's network to ensure assets and traffic are seen and controlled

\* While placing NGFWs across the customer's network may be part of the implementation, this approach focuses on the product rather than the customer's strategy. Zero Trust is more about policies and architecture than specific product placement.

\* This is incorrect.

\* Option C: Use the Zero Trust Roadshow package to demonstrate to the customer how robust Palo Alto Networks capabilities are in meeting Zero Trust

\* While demonstrating capabilities is valuable during the later stages of engagement, the initial focus should be on understanding the customer's business requirements rather than showcasing products.

\* This is incorrect.

\* Option D: Ask the customer about their approach to Zero Trust, explaining that it is a strategy more than it is something they purchase

\* Zero Trust is not a product but a strategy that requires a shift in mindset. By discussing their approach, the systems engineer can identify whether the customer understands Zero Trust principles and guide them accordingly.

\* This is correct.

References:

- \* Palo Alto Networks documentation on Zero Trust
- \* Zero Trust Architecture Principles in NIST 800-207

**NEW QUESTION # 12**

According to a customer's CIO, who is upgrading PAN-OS versions, "Finding issues and then engaging with your support people requires expertise that our operations team can better utilize elsewhere on more valuable tasks for the business." The upgrade project was initiated in a rush because the company did not have the appropriate tools to indicate that their current NGFWs were reaching capacity.

Which two actions by the Palo Alto Networks team offer a long-term solution for the customer? (Choose two.)

- A. Inform the CIO that the new enhanced security features they will gain from the PAN-OS upgrades will fix any future problems with upgrading and capacity.
- B. Propose AIOps Premium within Strata Cloud Manager (SCM) to address the company's issues from within the existing technology.
- C. Suggest the inclusion of training into the proposal so that the operations team is informed and confident in working on their firewalls.
- D. Recommend that the operations team use the free machine learning-powered AIOps for NGFW tool.

**Answer: B,C**

Explanation:

The customer's CIO highlights two key pain points: (1) the operations team lacks expertise to efficiently manage PAN-OS upgrades and support interactions, diverting focus from valuable tasks, and (2) the company lacked tools to monitor NGFW capacity, leading to a rushed upgrade. The goal is to recommend long-term solutions leveraging Palo Alto Networks' offerings for Strata Hardware Firewalls. Options B and D—training and AIOps Premium within Strata Cloud Manager (SCM)—address these issues by enhancing team capability and providing proactive management tools. Below is a detailed explanation, verified against official documentation.

Step 1: Analyzing the Customer's Challenges

\* Expertise Gap: The CIO notes that identifying issues and engaging support requires expertise the operations team doesn't fully have or can't prioritize. Upgrading PAN-OS on Strata NGFWs involves tasks like version compatibility checks, pre-upgrade validation, and troubleshooting, which demand familiarity with PAN-OS tools and processes.

\* Capacity Visibility: The rushed upgrade stemmed from not knowing the NGFWs were nearing capacity (e.g., CPU, memory, session limits), indicating a lack of monitoring or predictive analytics.

Long-term solutions must address both operational efficiency and proactive capacity management, aligning with Palo Alto Networks' ecosystem for Strata firewalls.

Reference: PAN-OS Administrator's Guide (11.1) - Upgrade Overview

"Successful upgrades require planning, validation, and monitoring to avoid disruptions and ensure capacity is sufficient." Step 2: Evaluating the Recommended Actions Option A: Recommend that the operations team use the free machine learning-powered AIOps for NGFW tool.

Analysis: AIOps for NGFW (free version) is a cloud-based tool that uses machine learning to monitor firewall health, detect anomalies, and provide upgrade recommendations. It offers basic telemetry (e.g., CPU usage, session counts) and alerts, which could have flagged capacity issues earlier. However, it lacks advanced features like automated remediation, detailed capacity planning, or integration with Strata Cloud Manager, limiting its long-term impact. Additionally, it doesn't address the expertise gap, as the team still needs knowledge to interpret and act on insights.

Conclusion: Helpful but not a comprehensive long-term solution.

Reference: AIOps for NGFW Documentation

"The free version provides basic health monitoring and ML-driven insights but lacks premium features for proactive management."

Option B: Suggest the inclusion of training into the proposal so that the operations team is informed and confident in working on their firewalls.

Analysis: Palo Alto Networks offers training through the Palo Alto Networks Authorized Training Partners and Cybersecurity Academy, covering PAN-OS administration, upgrades, and troubleshooting. For Strata NGFWs, courses like "Firewall Essentials: Configuration and Management (EDU-210)" teach upgrade best practices, capacity monitoring (e.g., via Device > High Availability > Resources), and support engagement.

How It Solves the Issue:

Reduces reliance on external expertise by upskilling the team.

Enables efficient upgrade planning (e.g., using Best Practice Assessment (BPA) tool).

Frees the team for higher-value tasks by minimizing support escalations.

Long-Term Benefit: A trained team can proactively manage upgrades and capacity, addressing the CIO's concern about expertise allocation.

Conclusion: A strong long-term solution.

Reference: Palo Alto Networks Training Catalog

"Training empowers operations teams to confidently manage NGFWs, including upgrades and capacity planning." Option C: Inform the CIO that the new enhanced security features they will gain from the PAN-OS upgrades will fix any future problems with upgrading and capacity.

Analysis: New PAN-OS versions (e.g., 11.1) bring features like enhanced App-ID, decryption, or ML-based threat detection, improving security. However, these don't inherently solve upgrade complexity or capacity visibility. Capacity issues depend on hardware limits (e.g., PA-5200 Series max sessions), not software features, and upgrades still require expertise. This response oversells benefits without addressing root causes.

Conclusion: Not a valid long-term solution.

Reference: PAN-OS 11.1 Release Notes

"New features enhance security but do not automate upgrade processes or capacity monitoring." Option D: Propose AIOps Premium within Strata Cloud Manager (SCM) to address the company's issues from within the existing technology.

Analysis: AIOps Premium, integrated with Strata Cloud Manager (SCM), is a subscription-based service for managing Strata NGFWs. It provides:

Predictive Analytics: Forecasts capacity needs (e.g., CPU, memory, sessions) using ML.

Upgrade Planning: Recommends optimal upgrade paths and validates configurations.

Proactive Alerts: Identifies issues before they escalate, reducing support calls.

Centralized Management: Monitors all firewalls from SCM, integrating with existing PAN-OS deployments.

How It Solves the Issue:

Prevents rushed upgrades by predicting capacity limits (e.g., via Capacity Saturation Reports).

Simplifies upgrade preparation with automated insights, reducing expertise demands.

Aligns with existing Strata technology, enhancing ROI.

Long-Term Benefit: Offers a scalable, proactive toolset to manage NGFWs, addressing both capacity and operational efficiency.

Conclusion: A robust long-term solution.

Reference: Strata Cloud Manager AIOps Premium Documentation

"AIOps Premium provides advanced capacity planning and upgrade readiness, minimizing operational burden." Step 3: Why B and D Are the Best Choices B (Training): Directly tackles the expertise gap, empowering the team to handle upgrades and capacity monitoring independently. It's a foundational fix, ensuring long-term self-sufficiency.

D (AIOps Premium in SCM): Provides a technological solution to preempt capacity issues and streamline upgrades, reducing the need for deep expertise and support escalations. It complements training by automating complex tasks.

Synergy: Together, they address both human (expertise) and systemic (tools) challenges, aligning with the CIO's goals of operational efficiency and business value.

Step 4: How These Actions Integrate with Strata NGFWs

Training: Teaches use of PAN-OS tools like System Resources (CLI: show system resources) and Dynamic Updates for capacity and upgrade prep.

AIOps Premium: Enhances Strata NGFW management via SCM, pulling telemetry (e.g., from Device > Setup > Telemetry) to predict and resolve issues.

Reference: PAN-OS Administrator's Guide (11.1) - Monitoring

"Combine training and tools like AIOps to optimize NGFW performance and upgrades."

### NEW QUESTION # 13

An existing customer wants to expand their online business into physical stores for the first time. The customer requires NGFWs at the physical store to handle SD-WAN, security, and data protection needs, while also mandating a vendor-validated deployment method. Which two steps are valid actions for a systems engineer to take? (Choose two.)

- A. Create a bespoke deployment plan with the customer that reviews their cloud architecture, store footprint, and security requirements.
- B. Use the reference architecture "On-Premises Network Security for the Branch Deployment Guide" to achieve a desired architecture.
- C. Use Golden Images and Day 1 configuration to create a consistent baseline from which the customer can efficiently work.
- D. Recommend the customer purchase Palo Alto Networks or partner-provided professional services to meet the stated requirements.

**Answer: B,D**

Explanation:

When an existing customer expands their online business into physical stores and requires Next-Generation Firewalls (NGFWs) at those locations to handle SD-WAN, security, and data protection-while mandating a vendor-validated deployment method-a systems engineer must leverage Palo Alto Networks' Strata Hardware Firewall capabilities and validated deployment strategies. The Strata portfolio, particularly the PA- Series NGFWs, is designed to secure branch offices with integrated SD-WAN and robust

security features.

Below is a detailed explanation of why options A and D are the correct actions, grounded in Palo Alto Networks' documentation and practices as of March 08, 2025.

#### Step 1: Recommend Professional Services (Option A)

The customer's requirement for a "vendor-validated deployment method" implies a need for expertise and assurance that the solution meets their specific needs-SD-WAN, security, and data protection-across new physical stores. Palo Alto Networks offers professional services, either directly or through certified partners, to ensure proper deployment of Strata Hardware Firewalls like the PA-400 Series or PA-1400 Series, which are ideal for branch deployments. These services provide end-to-end support, from planning to implementation, aligning with the customer's mandate for a validated approach.

\* Professional Services Scope: Palo Alto Networks' professional services include architecture design, deployment, and optimization for NGFWs and SD-WAN. This ensures that the PA-Series firewalls are configured to handle SD-WAN (e.g., dynamic path selection), security (e.g., Threat Prevention with ML-powered inspection), and data protection (e.g., WildFire for malware analysis and Data Loss Prevention integration).

\* Vendor Validation: By recommending these services, the engineer ensures a deployment that adheres to Palo Alto Networks' best practices, meeting the customer's requirement for a vendor-validated method. This is particularly critical for a customer new to physical store deployments, as it mitigates risks and accelerates time-to-value.

\* Strata Hardware Relevance: The PA-410, for example, is a desktop NGFW designed for small branch offices, offering SD-WAN and Zero Trust security out of the box. Professional services ensure its correct integration into the customer's ecosystem.

Reference:

"Palo Alto Networks Professional Services" documentation states, "Our experts help you design, deploy, and optimize your security architecture," covering NGFWs and SD-WAN for branch deployments.

"PA-400 Series" datasheet highlights its suitability for branch offices with "integrated SD-WAN functionality" and "advanced threat prevention," validated through professional deployment support.

Why Option A is Correct: Recommending professional services meets the customer's need for a vendor-validated deployment, leveraging Palo Alto Networks' expertise to tailor Strata NGFWs to the physical store requirements.

#### Step 2: Use the Reference Architecture Guide (Option D)

Explanation: Palo Alto Networks provides reference architectures, such as the "On-Premises Network Security for the Branch Deployment Guide," to offer vendor-validated blueprints for deploying Strata Hardware Firewalls in branch environments. This guide is specifically designed for scenarios like the customer's-expanding into physical stores-where SD-WAN, security, and data protection are critical.

Using this reference architecture ensures a consistent, proven deployment method that aligns with the customer's mandate.

Reference Architecture Details: The "On-Premises Network Security for the Branch Deployment Guide" outlines how to deploy PA-Series NGFWs with SD-WAN to secure branch offices. It includes configurations for secure connectivity (e.g., VPNs, SD-WAN hubs), threat prevention (e.g., App-ID, URL Filtering), and data protection (e.g., file blocking policies).

SD-WAN Integration: The guide leverages the PA-Series' native SD-WAN capabilities, such as dynamic path selection and application-based traffic steering, to optimize connectivity between stores and the existing online infrastructure.

Vendor Validation: As a Palo Alto Networks-authored document, this guide is inherently vendor-validated, providing step-by-step instructions and best practices that the engineer can adapt to the customer's store footprint.

Strata Hardware Relevance: The guide recommends models like the PA-1400 Series for larger branches or the PA-410 for smaller stores, ensuring scalability and consistency across deployments.

Reference:

"On-Premises Network Security for the Branch Deployment Guide" (Palo Alto Networks) details "branch office deployment with SD-WAN and NGFW capabilities," validated for Strata hardware like the PA-Series.

"SD-WAN Reference Architecture" complements this, emphasizing the PA-Series' role in "simplified branch deployments with integrated security." Why Option D is Correct: Using the reference architecture provides a vendor-validated, repeatable framework that directly addresses the customer's needs for SD-WAN, security, and data protection, ensuring a successful expansion into physical stores.

#### Why Other Options Are Incorrect

Option B: Use Golden Images and Day 1 configuration to create a consistent baseline from which the customer can efficiently work.

Analysis: While Golden Images and Day 1 configurations (e.g., via Panorama or Zero Touch Provisioning) are valuable for consistency and automation, they are not explicitly vendor-validated deployment methods in the context of Palo Alto Networks' documentation. These are tools for execution, not strategic actions for planning a deployment. Additionally, they assume prior planning, which isn't addressed here, making this less aligned with the customer's stated requirements.

Reference: "Panorama Administrator's Guide" mentions Golden Images for configuration consistency, but it's a technical implementation step, not a vendor-validated planning action.

Option C: Create a bespoke deployment plan with the customer that reviews their cloud architecture, store footprint, and security requirements.

Analysis: Creating a bespoke plan is a reasonable approach but does not inherently meet the "vendor-validated" mandate unless it leverages Palo Alto Networks' official tools (e.g., reference architectures or professional services). The question emphasizes a vendor-validated method, and a custom plan risks deviating from established, proven guidelines unless explicitly tied to such resources.



Reference: No specific Palo Alto Networks documentation mandates bespoke plans as a vendor-validated approach; instead, it prioritizes reference architectures and professional services.

#### Conclusion

Options A and D are the most valid actions for a systems engineer addressing the customer's expansion into physical stores with Strata Hardware Firewalls. Recommending professional services (A) ensures expert-led, vendor-validated deployment, while using the "On-Premises Network Security for the Branch Deployment Guide" (D) provides a proven blueprint tailored to SD-WAN, security, and data protection needs. Together, these steps leverage the PA-Series' capabilities to deliver a secure, scalable solution for the customer's new physical infrastructure.

#### NEW QUESTION # 14

A systems engineer (SE) has joined a team to work with a managed security services provider (MSSP) that is evaluating PAN-OS for edge connections to their customer base. The MSSP is concerned about how to efficiently handle routing with all of its customers, especially how to handle BGP peering, because it has created a standard set of rules and settings that it wants to apply to each customer, as well as to maintain and update them. The solution requires logically separated BGP peering setups for each customer. What should the SE do to increase the probability of Palo Alto Networks being awarded the deal?

- A. Confirm to the MSSP that the existing virtual routers will allow them to have logically separated BGP peering setups, but that there is no method to handle the standard criteria across all of the routers.
- B. Establish with the MSSP the use of vsys as the better way to segregate their environment so that customer data does not intermingle.
- C. Work with the MSSP to plan for the enabling of logical routers in the PAN-OS Advanced Routing Engine to allow sharing of routing profiles across the logical routers.
- D. Collaborate with the MSSP to create an API call with a standard set of routing filters, maps, and related actions, then the MSSP can call the API whenever they bring on a new customer.

#### Answer: C

##### Explanation:

To address the MSSP's requirement for logically separated BGP peering setups while efficiently managing standard routing rules and updates, Palo Alto Networks offers the Advanced Routing Engine introduced in PAN-OS 11.0. The Advanced Routing Engine enhances routing capabilities, including support for logical routers, which is critical in this scenario.

##### Why A is Correct

- \* Logical routers enable the MSSP to create isolated BGP peering configurations for each customer.
- \* The Advanced Routing Engine allows the MSSP to share standard routing profiles (such as filters, policies, or maps) across logical routers, simplifying the deployment and maintenance of routing configurations.
- \* This approach ensures scalability, as each logical router can handle the unique needs of a customer while leveraging shared routing rules.

##### Why Other Options Are Incorrect

- \* B: While using APIs to automate deployment is beneficial, it does not solve the need for logically separated BGP peering setups. Logical routers provide this separation natively.
- \* C: While virtual routers in PAN-OS can separate BGP peering setups, they do not support the efficient sharing of standard routing rules and profiles across multiple routers.
- \* D: Virtual systems (vsys) are used to segregate administrative domains, not routing configurations. Vsys is not the appropriate solution for managing BGP peering setups across multiple customers.

##### Key Takeaways:

- \* PAN-OS Advanced Routing Engine with logical routers simplifies BGP peering management for MSSPs.
- \* Logical routers provide the separation required for customer environments while enabling shared configuration profiles.

##### References:

- \* Palo Alto Networks PAN-OS 11.0 Advanced Routing Documentation

#### NEW QUESTION # 15

A security engineer has been tasked with protecting a company's on-premises web servers but is not authorized to purchase a web application firewall (WAF).

Which Palo Alto Networks solution will protect the company from SQL injection zero-day, command injection zero-day, Cross-Site Scripting (XSS) attacks, and IIS exploits?

- A. Advanced WildFire and PAN-OS 10.0 (and higher)
- B. Threat Prevention, Advanced URL Filtering, and PAN-OS 10.2 (and higher)

- C. Threat Prevention and PAN-OS 11.x
- **D. Advanced Threat Prevention and PAN-OS 11.x**

**Answer: D**

Explanation:

Protecting web servers from advanced threats like SQL injection, command injection, XSS attacks, and IIS exploits requires a solution capable of deep packet inspection, behavioral analysis, and inline prevention of zero-day attacks. The most effective solution here is Advanced Threat Prevention (ATP) combined with PAN-OS 11.x.

\* Why "Advanced Threat Prevention and PAN-OS 11.x" (Correct Answer B)? Advanced Threat Prevention (ATP) enhances traditional threat prevention by using inline deep learning models to detect and block advanced zero-day threats, including SQL injection, command injection, and XSS attacks.

With PAN-OS 11.x, ATP extends its detection capabilities to detect unknown exploits without relying on signature-based methods. This functionality is critical for protecting web servers in scenarios where a dedicated WAF is unavailable.

ATP provides the following benefits:

\* Inline prevention of zero-day threats using deep learning models.

\* Real-time detection of attacks like SQL injection and XSS.

\* Enhanced protection for web server platforms like IIS.

\* Full integration with the Palo Alto Networks Next-Generation Firewall (NGFW).

\* Why not "Threat Prevention and PAN-OS 11.x" (Option A)? Threat Prevention relies primarily on signature-based detection for known threats. While it provides basic protection, it lacks the capability to block zero-day attacks using advanced methods like inline deep learning. For zero-day SQL injection and XSS attacks, Threat Prevention alone is insufficient.

\* Why not "Threat Prevention, Advanced URL Filtering, and PAN-OS 10.2 (and higher)" (Option C)? While this combination includes Advanced URL Filtering (useful for blocking malicious URLs associated with exploits), it still relies on Threat Prevention, which is signature-based. This combination does not provide the zero-day protection needed for advanced injection attacks or XSS vulnerabilities.

\* Why not "Advanced WildFire and PAN-OS 10.0 (and higher)" (Option D)? Advanced WildFire is focused on analyzing files and executables in a sandbox environment to identify malware. While it is excellent for identifying malware, it is not designed to provide inline prevention for web-based injection attacks or XSS exploits targeting web servers.

## NEW QUESTION # 16

.....

For complete, comprehensive, and instant Palo Alto Networks Systems Engineer Professional - Hardware Firewall PSE-Strata-Pro-24 exam preparation, the Palo Alto Networks PSE-Strata-Pro-24 Exam Questions are the right choice. Real4test offers reliable new exam format, exam dumps demo and valid exam online help customers pass the Palo Alto Networks Systems Engineer Professional - Hardware Firewall PSE-Strata-Pro-24 easily.

**PSE-Strata-Pro-24 PDF Question:** [https://www.real4test.com/PSE-Strata-Pro-24\\_real-exam.html](https://www.real4test.com/PSE-Strata-Pro-24_real-exam.html)

- Valid PSE-Strata-Pro-24 Test Cost ☐ Training PSE-Strata-Pro-24 Solutions ☐ Updated PSE-Strata-Pro-24 Test Cram ☐ Simply search for ➤ PSE-Strata-Pro-24 ☐ for free download on [ [www.dumpsmaterials.com](http://www.dumpsmaterials.com) ] ☐ Updated PSE-Strata-Pro-24 Test Cram
- PSE-Strata-Pro-24 Pdf Braindumps ☐ PSE-Strata-Pro-24 Latest Test Format ☐ New Exam PSE-Strata-Pro-24 Materials ☐ Search for ☀ PSE-Strata-Pro-24 ☀ ☐ and download exam materials for free through ➡ [www.pdfvce.com](http://www.pdfvce.com) ☐ ☐ New Exam PSE-Strata-Pro-24 Materials
- Get Updated PSE-Strata-Pro-24 Valid Cram Materials and Newest PSE-Strata-Pro-24 PDF Question ☐ Search for [ PSE-Strata-Pro-24 ] and download it for free immediately on ☐ [www.vceengine.com](http://www.vceengine.com) ☐ ☐ PSE-Strata-Pro-24 PDF Question
- PSE-Strata-Pro-24 Simulation Questions ✓ ☐ PSE-Strata-Pro-24 Interactive Testing Engine ☐ New Exam PSE-Strata-Pro-24 Materials ☐ Open ☐ [www.pdfvce.com](http://www.pdfvce.com) ☐ enter ⇒ PSE-Strata-Pro-24 ⇐ and obtain a free download ☐ PSE-Strata-Pro-24 Test Cram Pdf
- Quiz Palo Alto Networks - PSE-Strata-Pro-24 - Palo Alto Networks Systems Engineer Professional - Hardware Firewall High Hit-Rate Valid Cram Materials ☐ Search for ⇒ PSE-Strata-Pro-24 ⇐ and obtain a free download on ( [www.examcollectionpass.com](http://www.examcollectionpass.com) ) ☐ Exam PSE-Strata-Pro-24 Certification Cost
- 100% Pass 2026 Palo Alto Networks Pass-Sure PSE-Strata-Pro-24 Valid Cram Materials ♣ Immediately open ☐ [www.pdfvce.com](http://www.pdfvce.com) ☐ and search for ➡ PSE-Strata-Pro-24 ☐ to obtain a free download ☐ Instant PSE-Strata-Pro-24 Access
- PSE-Strata-Pro-24 Interactive Testing Engine ☐ Instant PSE-Strata-Pro-24 Access ☐ PSE-Strata-Pro-24 New Study Guide ☐ Search for ( PSE-Strata-Pro-24 ) and download it for free on ☐ [www.verifiedumps.com](http://www.verifiedumps.com) ☐ website ☐

PSE-Strata-Pro-24 New Study Guide ☐ New Study PSE-Strata-Pro-24 Questions ☐ PSE-Strata-Pro-24 Simulation Questions ☐ Search on [www.pdfvce.com](http://www.pdfvce.com) for ☒ PSE-Strata-Pro-24 ☐☐☐ to obtain exam materials for free download ☐ PSE-Strata-Pro-24 Interactive Practice Exam

- P.S. Free & New PSE-Strata-Pro-24 dumps are available on Google Drive shared by Real4test: [https://drive.google.com/open?id=1nDn6xTs-g6\\_UzzhYv1xnKbpUt\\_jeY8qs](https://drive.google.com/open?id=1nDn6xTs-g6_UzzhYv1xnKbpUt_jeY8qs)