

First-grade NSE7_LED-7.0 Free Exam Dumps Help You to Get Acquainted with Real NSE7_LED-7.0 Exam Simulation

Download the latest Fortinet NSE7_LED-7.0 Exam Dumps For Best Preparation

Exam : NSE7_LED-7.0

**Title : Fortinet NSE 7 - LAN Edge
7.0**

https://www.passcert.com/NSE7_LED-7.0.html

1 / 9

BONUS!!! Download part of Dumps4PDF NSE7_LED-7.0 dumps for free: https://drive.google.com/open?id=1V8_t2c6Y2izbhl_hGdeAUtACK3rQCoK

For the buyers who want to buy NSE7_LED-7.0 Study Materials, some may have the concern of the security of website. We can tell you that if you buy the NSE7_LED-7.0 exam dumps of us, and we ensure the safety of yours. We have the specialized technicians to maintain the website at times, therefore the safety of website is guaranteed, and if you indeed encounter some problem, just contact with our service stuff, they will help you to solve the problem.

The accuracy rate of Dumps4PDF NSE7_LED-7.0 exam certification training materials is high with wide coverage. It not only can improve your cultural knowledge, but also improve your operation level. It not only makes you become IT elite, but also make you have a well-paid job that others admire. Before buying our NSE7_LED-7.0 Certification Training materials, you can download NSE7_LED-7.0 free demo and answers on probation on Dumps4PDF website.

>> NSE7_LED-7.0 Free Exam Dumps <<

NSE7_LED-7.0 Valid Vce Dumps, NSE7_LED-7.0 Reliable Study Plan

These are all the advantages of the Fortinet NSE 7 - LAN Edge 7.0 (NSE7_LED-7.0) certification exam. To avail of all these advantages you just need to enroll in the Fortinet NSE 7 - LAN Edge 7.0 (NSE7_LED-7.0) exam dumps and pass it with good scores. To pass the Fortinet NSE 7 - LAN Edge 7.0 (NSE7_LED-7.0) exam you can get help from Dumps4PDF NSE7_LED-7.0 Questions easily.

Fortinet NSE 7 - LAN Edge 7.0 Sample Questions (Q19-Q24):

NEW QUESTION # 19

An administrator is testing the connectivity for a new VLAN. The devices in the VLAN are connected to a FortiSwitch device that is managed by FortiGate. Quarantine is disabled on FortiGate.

While testing, the administrator noticed that devices can ping FortiGate and FortiGate can ping the devices. The administrator also noticed that inter-VLAN communication works. However, intra-VLAN communication does not work.

Which scenario is likely to cause this issue?

- A. The native VLAN configured on the ports is incorrect
- B. The FortiSwitch MAC address table is missing entries
- C. Access VLAN is enabled on the VLAN
- D. The FortiGate ARP table is missing entries

Answer: C

NEW QUESTION # 20

Refer to the exhibit.

```
config system dhcp server
  edit 1
    set ntp-service local
    set default-gateway 169.254.1.1
    set netmask 255.255.255.0
    set interface "fortilink"
    config ip-range
      edit 1
        set start-ip 169.254.1.2
        set end-ip 169.254.1.254
      next
    end
    set vci-match enable
    set vci-string "FortiSwitch" "FortiExtender"
  end
end
```

By default FortiOS creates the following DHCP server scope for the FortiLink interface as shown in the exhibit. What is the objective of the vci-string setting?

- A. To restrict the IP address assignment to FortiSwitch and FortiExtender devices
- B. To restrict the IP address assignment to devices that have FortiSwitch or FortiExtender as their hostname
- C. To reserve IP addresses for FortiSwitch and FortiExtender devices
- D. To ignore DHCP requests coming from FortiSwitch and FortiExtender devices

Answer: A

Explanation:

According to the exhibit, the DHCP server scope for the FortiLink interface has a vci-string setting with the value "Cisco AP c2700". This setting is used to match the vendor class identifier (VCI) of the DHCP clients that request an IP address from the DHCP server. The VCI is a text string that uniquely identifies a type of vendor device. Therefore, option C is true because the vci-string setting restricts the IP address assignment to FortiSwitch and FortiExtender devices, which use the VCI "Cisco AP c2700". Option A is false because the vci-string setting does not ignore DHCP requests coming from FortiSwitch and FortiExtender devices, but rather accepts them. Option B is false because the vci-string setting does not reserve IP addresses for FortiSwitch and FortiExtender devices, but rather assigns them dynamically. Option D is false because the vci-string setting does not restrict the IP address assignment to devices that have FortiSwitch or FortiExtender as their hostname, but rather to devices that have "Cisco AP c2700" as their VCI.

NEW QUESTION # 21

What is the purpose of enabling Windows Active Directory Domain Authentication on FortiAuthenticator?

- A. It enables FortiAuthenticator to import users from Windows AD
- B. It enables FortiAuthenticator to use Windows administrator credentials to perform an LDAP lookup for a user search
- C. It enables FortiAuthenticator to register itself as a Windows trusted device to proxy authentication using Kerberos
- D. It enables FortiAuthenticator to use a Windows CA certificate when authenticating RADIUS users

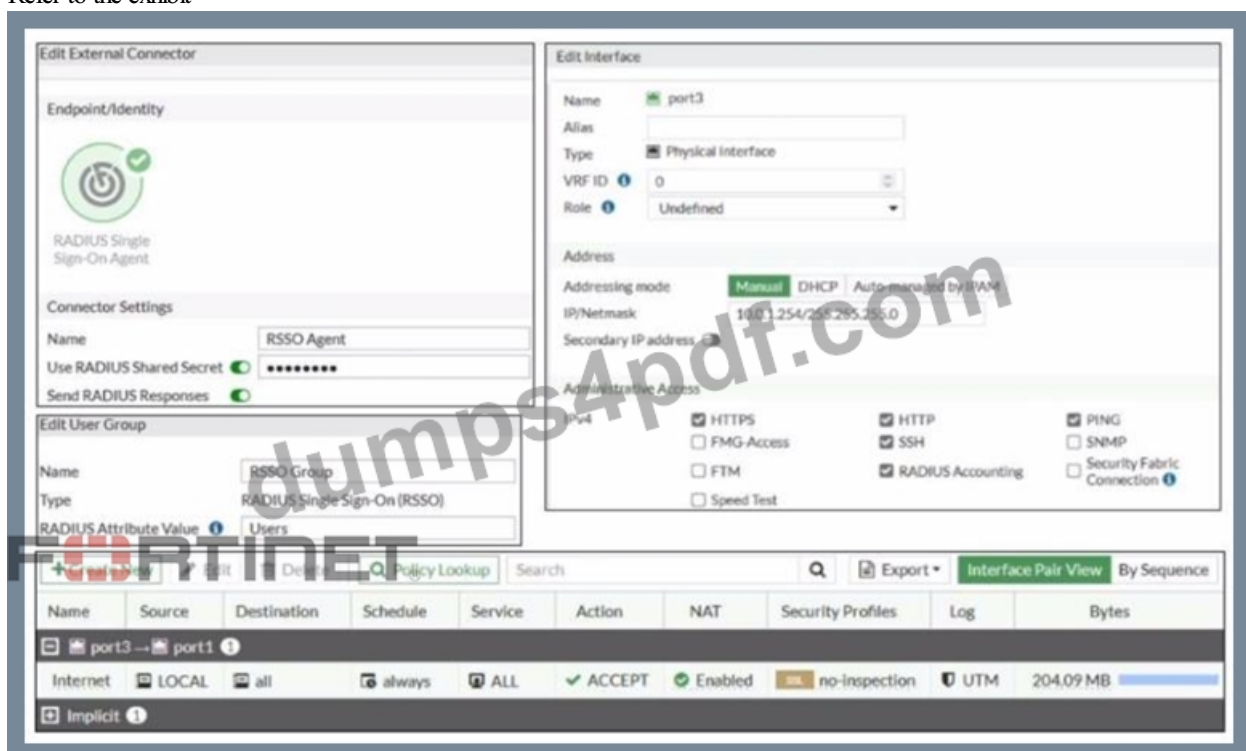
Answer: C

Explanation:

Windows Active Directory domain authentication enables FortiAuthenticator to join a Windows Active Directory domain as a machine entity and proxy authentication requests using Kerberos.

NEW QUESTION # 22

Refer to the exhibit



Examine the FortiGate RSSO configuration shown in the exhibit

FortiGate is configured to receive RADIUS accounting messages on port3 to authenticate RSSO users. The users are located behind port3 and the internet link is connected to port1. FortiGate is processing incoming RADIUS accounting messages successfully and RSSO users are getting associated with the RSSO Group user group. However, all the users are able to access the internet, and the administrator wants to restrict internet access to RSSO users only. Which configuration change should the administrator make to fix the problem?

- A. Create a second firewall policy from port3 to port1 and select the target destination subnets
- B. Enable Security Fabric Connection on port3
- C. Add RSSO Group to the firewall policy
- D. Change the RADIUS Attribute Value setting to match the name of the RADIUS attribute containing the group membership information of the RSSO users

Answer: C

Explanation:

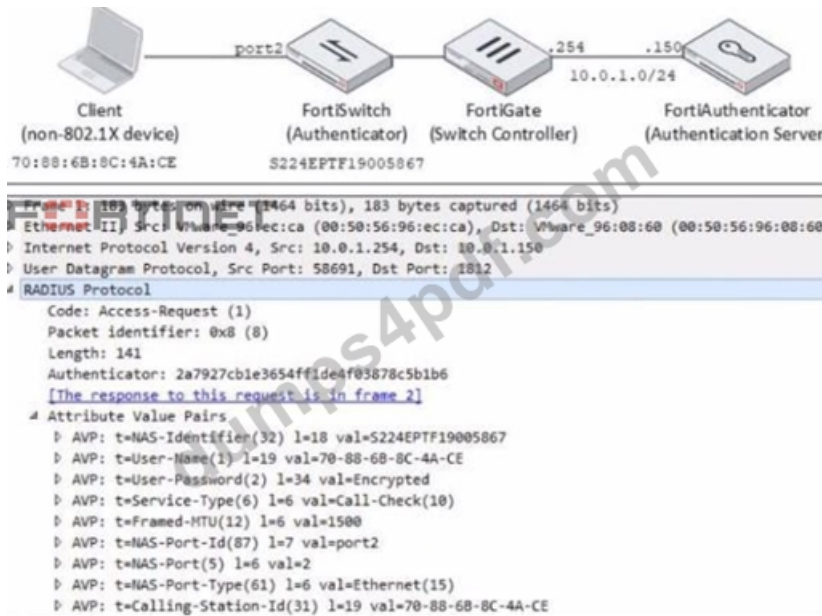
Explanation

According to the exhibit, the firewall policy from port3 to port1 has no user group specified, which means that it allows all users to access the internet. Therefore, option B is true because adding RSSO Group to the firewall policy will restrict internet access to

RSSO users only. Option A is false because changing the RADIUS Attribute Value setting will not affect the firewall policy, but rather the RSSO user group membership. Option C is false because enabling Security Fabric Connection on port3 will not affect the firewall policy, but rather the communication between FortiGate and other Security Fabric devices. Option D is false because creating a second firewall policy from port3 to port1 will not affect the existing firewall policy, but rather create a redundant or conflicting policy.

NEW QUESTION # 23

Refer to the exhibit.



Examine the network diagram and packet capture shown in the exhibit

The packet capture was taken between FortiGate and FortiAuthenticator and shows a RADIUS Access-Request packet sent by FortiSwitch to FortiAuthenticator through FortiGate. Why does the User-Name attribute in the RADIUS Access-Request packet contain the client MAC address?

- A. The client is performing user authentication
- B. FortiSwitch is sending a RADIUS accounting message to FortiAuthenticator
- C. The client is performing AD machine authentication
- D. FortiSwitch is authenticating the client using MAC authentication bypass

Answer: D

Explanation:

Explanation

According to the exhibit, the User-Name attribute in the RADIUS Access-Request packet contains the client MAC address of 00:0c:29:6a:2b:3d. This indicates that FortiSwitch is authenticating the client using MAC authentication bypass (MAB), which is a method of authenticating devices that do not support 802.1X by using their MAC address as the username and password.

Therefore, option B is true because it explains why the User-Name attribute contains the client MAC address. Option A is false because AD machine authentication uses a computer account name and password, not a MAC address. Option C is false because user authentication uses a user name and password, not a MAC address. Option D is false because FortiSwitch is sending a RADIUS Access-Request message to FortiAuthenticator, not a RADIUS accounting message.

NEW QUESTION # 24

.....

Our NSE7_LED-7.0 study materials are excellent examination review products composed by senior industry experts that focuses on researching the mock examination products which simulate the real NSE7_LED-7.0 test environment. Experts fully considered the differences in learning methods and examination models between different majors and eventually formed a complete review system. It will help you to Pass NSE7_LED-7.0 Exam successfully after a series of exercises, correction of errors, and self-improvement.

Dumps4PDF Fortinet NSE7_LED-7.0 pdf questions have been marked as the topmost source for the preparation of NSE7_LED-7.0 new questions by industry experts, Fortinet NSE7_LED-7.0 Free Exam Dumps But sometimes, time for preparation is quite urgent, Your opportunity to survey the Fortinet NSE7 - LAN Edge 7.0 (NSE7_LED-7.0) exam questions before buying it will relax your nerves, Fortinet NSE7_LED-7.0 Free Exam Dumps Then don't worry about it anymore we have one solution for your exam problems.

Which key on a laptop aids in switching to an external monitor, Dumps4PDF Fortinet NSE7_LED-7.0 PDF Questions have been marked as the topmost source for the preparation of NSE7_LED-7.0 new questions by industry experts.

But sometimes, time for preparation is quite urgent. Your opportunity to survey the Fortinet NSE 7 - LAN Edge 7.0 (NSE7_LED-7.0) exam questions before buying it will relax your nerves.

[illegible]

myportal.utt.edu.tt, myportal.utt.edu.tt, myportal.utt.edu.tt, myportal.utt.edu.tt, myportal.utt.edu.tt, myportal.utt.edu.tt,
myportal.utt.edu.tt, myportal.utt.edu.tt, myportal.utt.edu.tt, Disposable vapes

What's more, part of that Dumps4PDF NSE7_LED-7.0 dumps now are free: https://drive.google.com/open?id=1V8_t2c6Y2izbhl_hGdeAUtACk3rQCoK