

DP-600 Relevant Questions & DP-600 New Study Questions

DP-600 EXAM WITH QUESTIONS AND ANSWERS 2024-2025

What are the two types of Fabric licenses?

Per user licenses and Capacity licenses.

What are the SKUs for Fabric (capacity licensing)?

F2^a where the capacity units are 2^a and the Power BI v-cores are 2^(a-3). For example, SKU F4 has 4 capacity units and 0.5 Power BI v-cores.

What three things does Microsoft claim a Fabric license allows you to do?

1. Use all the Microsoft Fabric features licensed by capacity
2. Create Microsoft fabric items and connect to other Microsoft Fabric items.
3. Save your items to a workspace and share them with a user that has an appropriate license.

SKUs that are smaller than _____ require a Pro or Premium Per User PPU license or a Power BI individual trial to consume Power BI content.

F64

What are the three types of individual licenses?

1. Free - a free license allows you to create and share Fabric content other than Power BI items in Microsoft Fabric if you have access to a Fabric capacity (either trial or paid).
2. Pro - a Pro license lets you share Power BI content with other users. Every organization needs at least one user with a Pro or a Premium Per User (PPU) license if they intend to use Power BI within Fabric.
3. Premium per-user (PPU) - PPU licenses allow organizations to access Power BI Premium features by licensing every user with a PPU license instead of purchasing a Power BI Premium capacity. PPU can be more cost-effective when Power BI

P.S. Free & New DP-600 dumps are available on Google Drive shared by Prep4sures: <https://drive.google.com/open?id=16vhlNz4944uw3CgGSLg8xHbHA7QNeTG>

Candidates who want to be satisfied with the Implementing Analytics Solutions Using Microsoft Fabric (DP-600) preparation material before buying can try a free demo. Customers who choose this platform to prepare for the Microsoft DP-600 Exam require a high level of satisfaction. For this reason, Prep4sures has a support team that works around the clock to help DP-600 applicants find answers to their concerns.

Microsoft DP-600 Exam Syllabus Topics:

Topic	Details

Topic 1	<ul style="list-style-type: none"> • Implement and manage semantic models: This section of the exam measures the skills of architects and focuses on designing and optimizing semantic models to support enterprise-scale analytics. It evaluates understanding of storage modes and implementing star schemas and complex relationships, such as bridge tables and many-to-many joins. Architects must write DAX-based calculations using variables, iterators, and filtering techniques. The use of calculation groups, dynamic format strings, and field parameters is included. The section also includes configuring large semantic models and designing composite models. For optimization, candidates are expected to improve report visual and DAX performance, configure Direct Lake behaviors, and implement incremental refresh strategies effectively.
Topic 2	<ul style="list-style-type: none"> • Prepare data: This section of the exam measures the skills of engineers and covers essential data preparation tasks. It includes establishing data connections and discovering sources through tools like the OneLake data hub and the real-time hub. Candidates must demonstrate knowledge of selecting the appropriate storage type—lakehouse, warehouse, or eventhouse—depending on the use case. It also includes implementing OneLake integrations with Eventhouse and semantic models. The transformation part involves creating views, stored procedures, and functions, as well as enriching, merging, denormalizing, and aggregating data. Engineers are also expected to handle data quality issues like duplicates, missing values, and nulls, along with converting data types and filtering. Furthermore, querying and analyzing data using tools like SQL, KQL, and the Visual Query Editor is tested in this domain.
Topic 3	<ul style="list-style-type: none"> • Maintain a data analytics solution: This section of the exam measures the skills of administrators and covers tasks related to enforcing security and managing the Power BI environment. It involves setting up access controls at both workspace and item levels, ensuring appropriate permissions for users and groups. Row-level, column-level, object-level, and file-level access controls are also included, alongside the application of sensitivity labels to classify data securely. This section also tests the ability to endorse Power BI items for organizational use and oversee the complete development lifecycle of analytics assets by configuring version control, managing Power BI Desktop projects, setting up deployment pipelines, assessing downstream impacts from various data assets, and handling semantic model deployments using XMLA endpoint. Reusable asset management is also a part of this domain.

>> DP-600 Relevant Questions <<

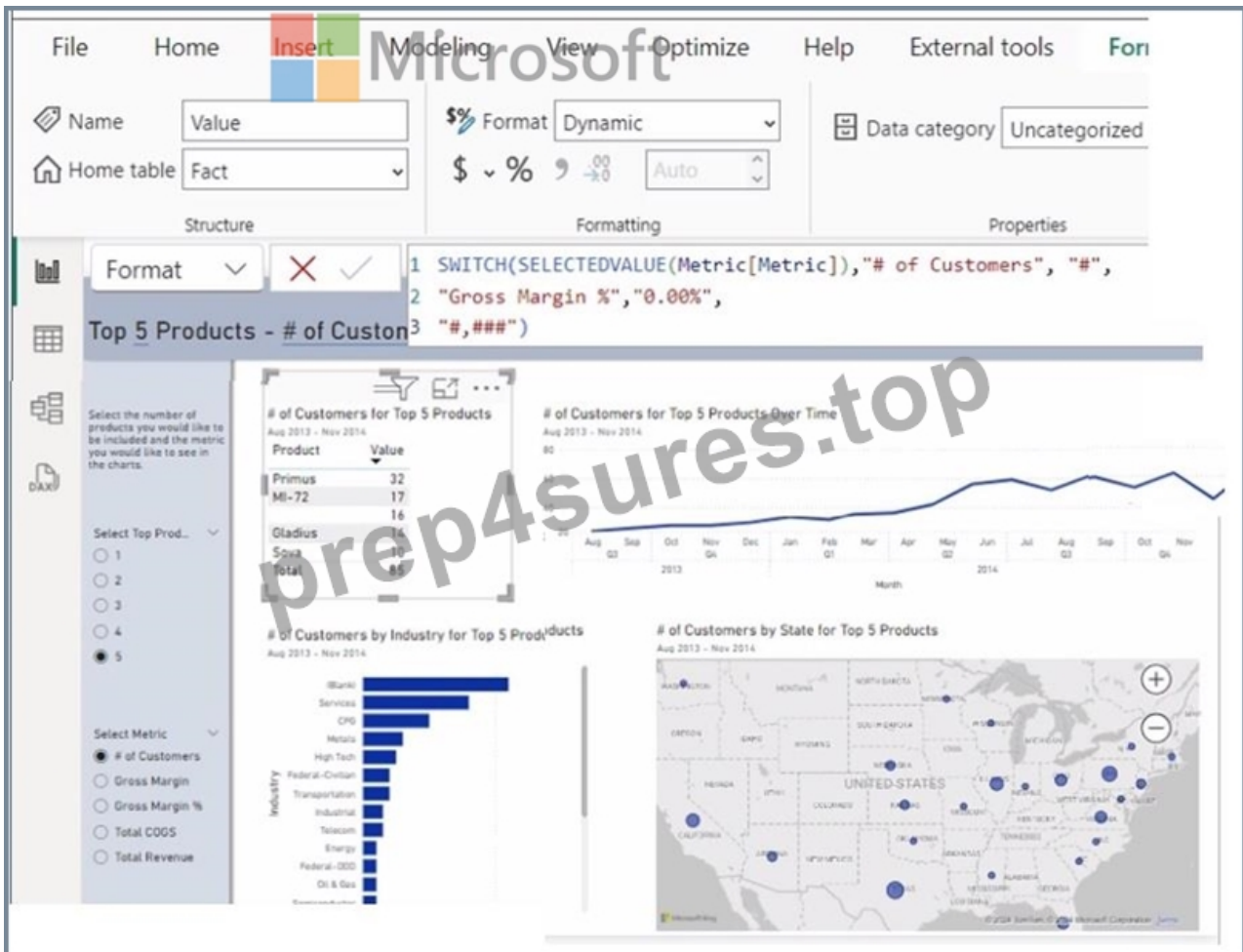
DP-600 New Study Questions, Valid DP-600 Exam Forum

Practice tests (desktop and web-based) provide an Microsoft DP-600 examination scenario so your preparation for the Implementing Analytics Solutions Using Microsoft Fabric (DP-600) exam becomes quite easier. Since the real DP-600 examination costs a high penny, Prep4sures provide a free demo of Microsoft DP-600 Exam Dumps before your purchase. The free demo of the Implementing Analytics Solutions Using Microsoft Fabric (DP-600) exam prep material is helpful to remove your doubts about it. The product is available in three versions which are PDF, Web-based practice test, and Desktop practice test software.

Microsoft Implementing Analytics Solutions Using Microsoft Fabric Sample Questions (Q101-Q106):

NEW QUESTION # 101

You are creating a report and a semantic model in Microsoft Power BI Desktop. The Value measure has the expression shown in the following exhibit.



Use the drop-down menus to select the answer choice that completes each statement based on the information presented in the graphic.

NOTE: Each correct selection is worth one point.

Answer Area

A [answer choice] was added to the Value measure.

The Value measure can return values formatted as [answer choice].

Drop-down 1:

- dynamic format string
- calculation group
- data category
- dynamic format string
- synonym

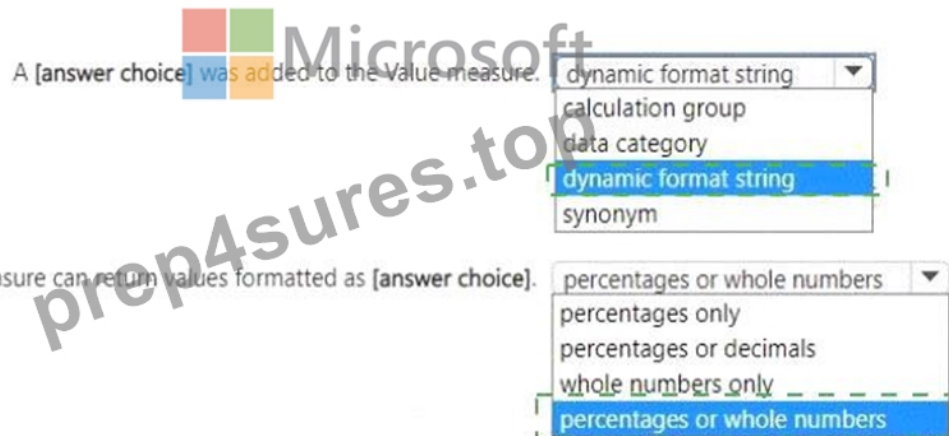
Drop-down 2:

- percentages or whole numbers
- percentages only
- percentages or decimals
- whole numbers only
- percentages or whole numbers

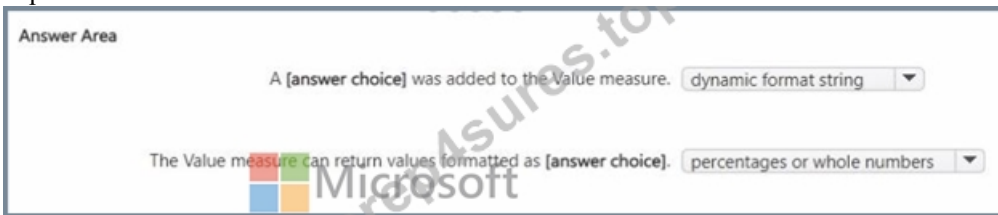
Answer:

Explanation:

Answer Area



Explanation:



Comprehensive Detailed Explanation

Step 1: Reviewing the provided DAX expression

```
SWITCH(  
  SELECTEDVALUE(Metric[Metric]),  
  "# of Customers", "#",  
  "Gross Margin %", "0.00%",  
  "#,####"  
)
```

This is applied as a dynamic format string.

It changes the display formatting of the Value measure depending on the selected metric.

Step 2: Identify the feature

The screenshot shows Format = Dynamic in the Power BI Modeling tab.

This confirms that a dynamic format string has been applied.

So, for the first blank # dynamic format string.

Step 3: Identify the output formats

If the metric = # of Customers # format is "#" # whole numbers.

If the metric = Gross Margin % # format is "0.00%" # percentages.

Fallback # "#,####" # also whole numbers.

Thus, the measure supports both whole numbers and percentages.

So, for the second blank # percentages or whole numbers.

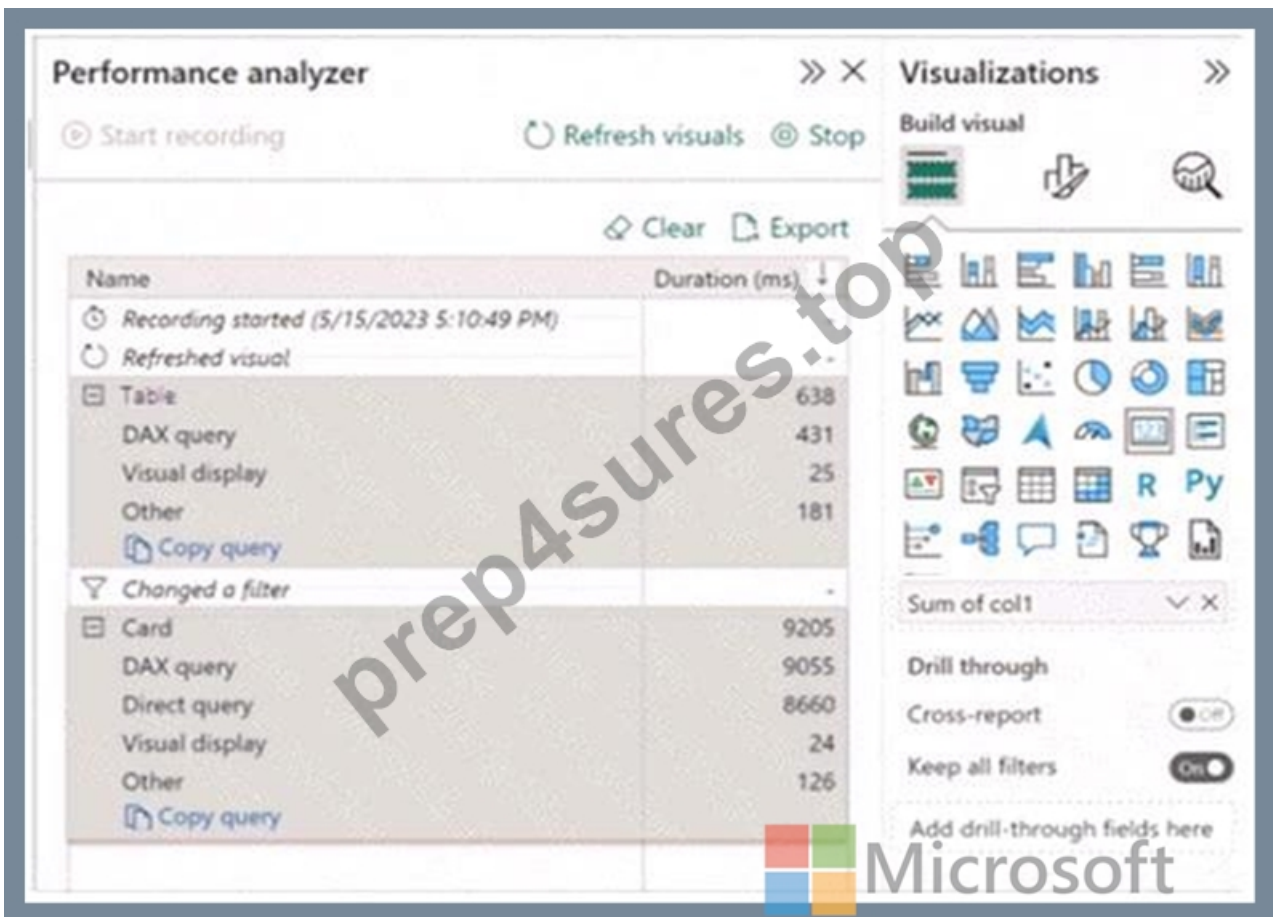
References

Dynamic format strings in Power BI

SWITCH function in DAX

NEW QUESTION # 102

You have a Microsoft Power BI report and a semantic model that uses Direct Lake mode. From Power BI Desktop, you open Performance analyzer as shown in the following exhibit.



Use the drop-down menus to select the answer choice that completes each statement based on the information presented in the graphic. NOTE: Each correct selection is worth one point.

Answer Area



The Direct Lake fallback behavior is set to [answer choice].

DirectQueryOnly
Automatic
DirectLakeOnly
DirectQueryOnly

The query for the table visual is executed by using [answer choice].

the composite model
the composite model
Direct Lake
DirectQuery

Answer:

Explanation:

Answer Area

The Direct Lake fallback behavior is set to [answer choice].

DirectQueryOnly
Automatic
DirectLakeOnly
DirectQueryOnly

The query for the table visual is executed by using [answer choice].

the composite model
the composite model
Direct Lake
DirectQuery



Microsoft

Explanation:

* The Direct Lake fallback behavior is set to: DirectQueryOnly

* The query for the table visual is executed by using: DirectQuery

In the context of Microsoft Power BI, when using DirectQuery in Direct Lake mode, there is no caching of data and all queries are sent directly to the underlying data source. The Performance Analyzer tool shows the time taken for different operations, and from the options provided, it indicates that DirectQuery mode is being used for the visuals, which is consistent with the Direct Lake

setting. DirectQueryOnly as the fallback behavior ensures that only DirectQuery will be used without reverting to import mode.

NEW QUESTION # 103

Which type of data store should you recommend in the AnalyticsPOC workspace?

- A. a warehouse
- **B. a lakehouse**
- C. a data lake
- D. an external Hive metaStore

Answer: B

Explanation:

A lakehouse (C) should be recommended for the AnalyticsPOC workspace. It combines the capabilities of a data warehouse with the flexibility of a data lake. A lakehouse supports semi-structured and unstructured data and allows for T-SQL and Python read access, fulfilling the technical requirements outlined for Litware.

References = For further understanding, Microsoft's documentation on the lakehouse architecture provides insights into how it supports various data types and analytical operations.

NEW QUESTION # 104

What should you recommend using to ingest the customer data into the data store in the AnalyticsPOC workspace?

- **A. a dataflow**
- B. a pipeline that contains a KQL activity
- C. a Spark notebook
- D. a stored procedure

Answer: A

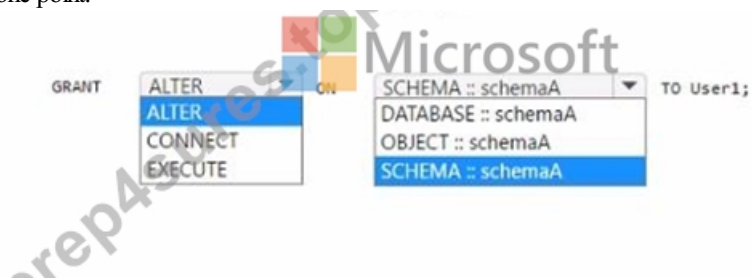
NEW QUESTION # 105

You have a Fabric tenant that contains a warehouse named Warehouse1. Warehouse1 contains three schemas named schemaA, schemaB, and schemaC. You need to ensure that a user named User1 can truncate tables in schemaA only.

How should you complete the T-SQL statement? To answer, select the appropriate options in the answer area.

NOTE: Each correct selection is worth one point.

Answer Area



Answer:

Explanation:



NEW QUESTION # 106

.....

Our DP-600 exam dumps are possessed with high quality which is second to none. Just as what have been reflected in the statistics, the pass rate for those who have chosen our DP-600 exam guide is as high as 99%. In addition, our DP-600 test prep is renowned for free renewal in the whole year. With our DP-600 Training Materials, you will find that not only you can pass and get your certification easily, but also your future is obvious bright. Our DP-600 training guide is worthy to buy.

DP-600 New Study Questions: <https://www.prep4sures.top/DP-600-exam-dumps-torrent.html>

- Implementing Analytics Solutions Using Microsoft Fabric Valid Exam Guide - DP-600 Free Pdf Vce - Implementing Analytics Solutions Using Microsoft Fabric Latest Practice Questions □ Download ☀ DP-600 □☀□ for free by simply entering □ www.examcollectionpass.com □ website □DP-600 Reliable Guide Files
- Free DP-600 Brain Dumps □ DP-600 Valid Vce Dumps * DP-600 Actual Test Answers □ The page for free download of □ DP-600 □ on > www.pdfvce.com □ will open immediately □DP-600 Best Preparation Materials
- Flexible DP-600 Learning Mode □ Flexible DP-600 Learning Mode □ New DP-600 Exam Duration ☆ Easily obtain free download of “ DP-600 ” by searching on □ www.vceengine.com □ □DP-600 Cert Exam
- Valid Exam DP-600 Book □ DP-600 Valid Vce Dumps □ DP-600 New Study Guide □ Open website ☀ www.pdfvce.com □☀□ and search for (DP-600) for free download □DP-600 Latest Dumps Ebook
- 2026 Accurate DP-600 Relevant Questions | 100% Free DP-600 New Study Questions □ Copy URL [www.exam4labs.com] open and search for [DP-600] to download for free □Interactive DP-600 Questions
- DP-600 Cert Exam □ Latest DP-600 Exam Objectives □ New DP-600 Exam Duration □ Immediately open [www.pdfvce.com] and search for (DP-600) to obtain a free download □DP-600 Valid Vce Dumps
- Latest DP-600 Exam Objectives □ Free DP-600 Brain Dumps □ Valid Exam DP-600 Book □ Download ➡ DP-600 □□□ for free by simply entering [www.prepawayexam.com] website □DP-600 Latest Braindumps Ppt
- Pass Guaranteed 2026 DP-600: Implementing Analytics Solutions Using Microsoft Fabric –Authoritative Relevant Questions □ Search for ▷ DP-600 ◁ and download exam materials for free through [www.pdfvce.com] □DP-600 New Study Guide
- Pass Guaranteed 2026 DP-600: Implementing Analytics Solutions Using Microsoft Fabric –Authoritative Relevant Questions □ Search for ☀ DP-600 □☀□ and download it for free immediately on ➡ www.examdiscuss.com □□□ □DP-600 Latest Braindumps Ppt
- Pass Guaranteed 2026 DP-600: Implementing Analytics Solutions Using Microsoft Fabric –Authoritative Relevant Questions □ Search for 「 DP-600 」 and download it for free on □ www.pdfvce.com □ website □DP-600 Reliable Guide Files
- Latest DP-600 Exam Objectives □ DP-600 New Study Guide □ DP-600 Exam Discount □ Go to website ➡ www.examcollectionpass.com □ open and search for “ DP-600 ” to download for free □DP-600 New Study Guide
- binksites.com, tiannayize934626.techionblog.com, gerardeljg724573.blogproducer.com, bookmarkuse.com, montyaccu474342.westexwiki.com, jemimalyyw640073.therainblog.com, marctgrf899693.actoblog.com, scrapbookmarket.com, nicolasxhlm860310.59bloggers.com, delilahsjzh276440.wikilima.com, Disposable vapes

2026 Latest Prep4sures DP-600 PDF Dumps and DP-600 Exam Engine Free Share: <https://drive.google.com/open?id=16vhl1Nz4944uw3CgGSLg8xHbHA7QNeTG>