

High Pass-Rate Tableau TDA-C01 Latest Learning Materials offer you accurate Reliable Exam Pass4sure | Tableau Certified Data Analyst

LAST MINUTE
คืนคะแนนให้ทันก่อนสอบ

แพ็คเกจ #DEK70 เรียกร้องมากที่สุด
ครบ 5 วิชาเก็บคะแนน เข้าแพทย์สูงถึง 56%

ครบ 5 วิชาเก็บคะแนน 56% ของสายแพทย์ !

9626 PACK TCAS 3 วิชา + ปรับพื้นฐาน DEK'70
(ฟิสิกส์, คณิต, ภาษาอังกฤษ) (วิทย์, อังกฤษ)

ราคาพิเศษ 24,400.-
จาก 54,798.-
ประหยัดไป 30,398.-

แถมฟรี 6 รายการ พร้อมอัปเดตข้อสอบล่าสุด ปี 69 เรียนได้ถึงวันสอบ

✓ รับฟรี ! TCASter Mock Exam 3 วิชา (ฟิสิกส์, คณิต, ภาษาอังกฤษ)
✓ รับฟรี ! ฟรีเขียนหนังสือรวมใจกาย และ สรุปสูตรวิชาฟิสิกส์
พร้อม คอร์สปรับพื้นฐานชีวและภาษาอังกฤษ

3 วันเท่านั้น
พิเศษ ! เฉพาะวันที่ 20 - 22 ธ.ค. 68 เท่านั้น

P.S. Free 2025 Tableau TDA-C01 dumps are available on Google Drive shared by TroytecDumps: <https://drive.google.com/open?id=16jwLbV0P6X68uwpIXZWdkXvzl9Qg5vkt>

TroytecDumps is the leading position in this field and famous for high pass rate of the TDA-C01 learning guide. If you are headache about your qualification exams, our TDA-C01 learning guide materials will be a great savior for you. Now it is your opportunity that we provide the best valid and professional TDA-C01 Study Guide materials which have 100% pass rate. If you really want to clear exam and gain success one time, choosing us will be the wise thing for you. If you hesitate about us please pay attention on below about our satisfying service and high-quality TDA-C01 guide torrent.

TroytecDumps has focus on offering the accurate and professional exam dumps for Tableau certification test. All questions and answers of TDA-C01 are written by our IT experts who has more than 10 years' experience in IT filed. With the help of our TDA-C01 Dumps Torrent, you will get high passing score in the test with less time and money.

>> TDA-C01 Latest Learning Materials <<

100% Pass Quiz 2026 High-quality Tableau TDA-C01 Latest Learning Materials

We offer a money-back guarantee if you fail despite proper preparation and using our product (conditions are mentioned on our guarantee page). This feature gives you the peace of mind to confidently prepare for your Tableau Certified Data Analyst (TDA-C01) certification exam. Our Tableau TDA-C01 exam dumps are available for instant download right after purchase, allowing you to start your Tableau Certified Data Analyst (TDA-C01) preparation immediately.

Tableau Certified Data Analyst Sample Questions (Q138-Q143):

NEW QUESTION # 138

You create a parameter named Choose Region that contains values from a field named Region.

You want users to be able to use the Choose Region parameter to interact with a chart by toggling between different regions. What should you do next?

- A. Add the Choose Region parameter to the Pages card
- B. Add the [Region] = [Choose Region] formula to the Filters card
- **C. Add Region to the Filters card**
- D. Set the Choose Region parameter to Single Value (list)

Answer: C

Explanation:

To use the Choose Region parameter to interact with a chart by toggling between different regions, you should add the [Region] = [Choose Region] formula to the Filters card. This formula will create a boolean filter that returns TRUE if the value in the Region field matches the value in the Choose Region parameter, and FALSE otherwise. You can add this formula to the Filters card by right-clicking on it and selecting Add Filter from the menu. Then you can select Condition from the dialog box and enter the formula in the text box. This will filter the chart to show only the data for the selected region.

The other options are not correct for this scenario. Adding Region to the Filters card will create a categorical filter that shows a list of values from the Region field, but it will not use the Choose Region parameter. Adding the Choose Region parameter to the Pages card will create a page control that allows you to cycle through different values of the parameter, but it will not filter the chart. Setting the Choose Region parameter to Single Value (list) will change how the parameter control appears on the worksheet, but it will not affect how it interacts with the chart. Reference: <https://help.tableau.com/current/pro/desktop/en-us/parameters.htm>
<https://help.tableau.com/current/pro/desktop/en-us/filtering.htm> https://help.tableau.com/current/pro/desktop/en-us/filtering_condition.htm

NEW QUESTION # 139

You have the following dataset.

Name
Charles Sheldon
charles,sheldon
Sheldon-Charles
Charles.Sheldon
Charles_Sheldon

Which grouping option should you use in Tableau Prep to group all five names automatically?

- A. Common Characters
- B. Pronunciation
- **C. Manual Selection**
- D. Spelling

Answer: C

Explanation:

To group all five names automatically, you should use Manual Selection as a grouping option in Tableau Prep. Manual Selection is a feature that allows you to select values from your data and group them together based on your criteria. You can use Manual Selection by clicking on Group Values in Profile pane > Manual Selection from the menu. This will open a dialog box where you can select values from your data and assign them to a group.

In this case, you want to group all five names together based on their spelling variations. You can use Manual Selection by selecting all five values from your data and assigning them to a group named "Harry Potter". This will create a new field named Grouped Field that contains "Harry Potter" as one value.

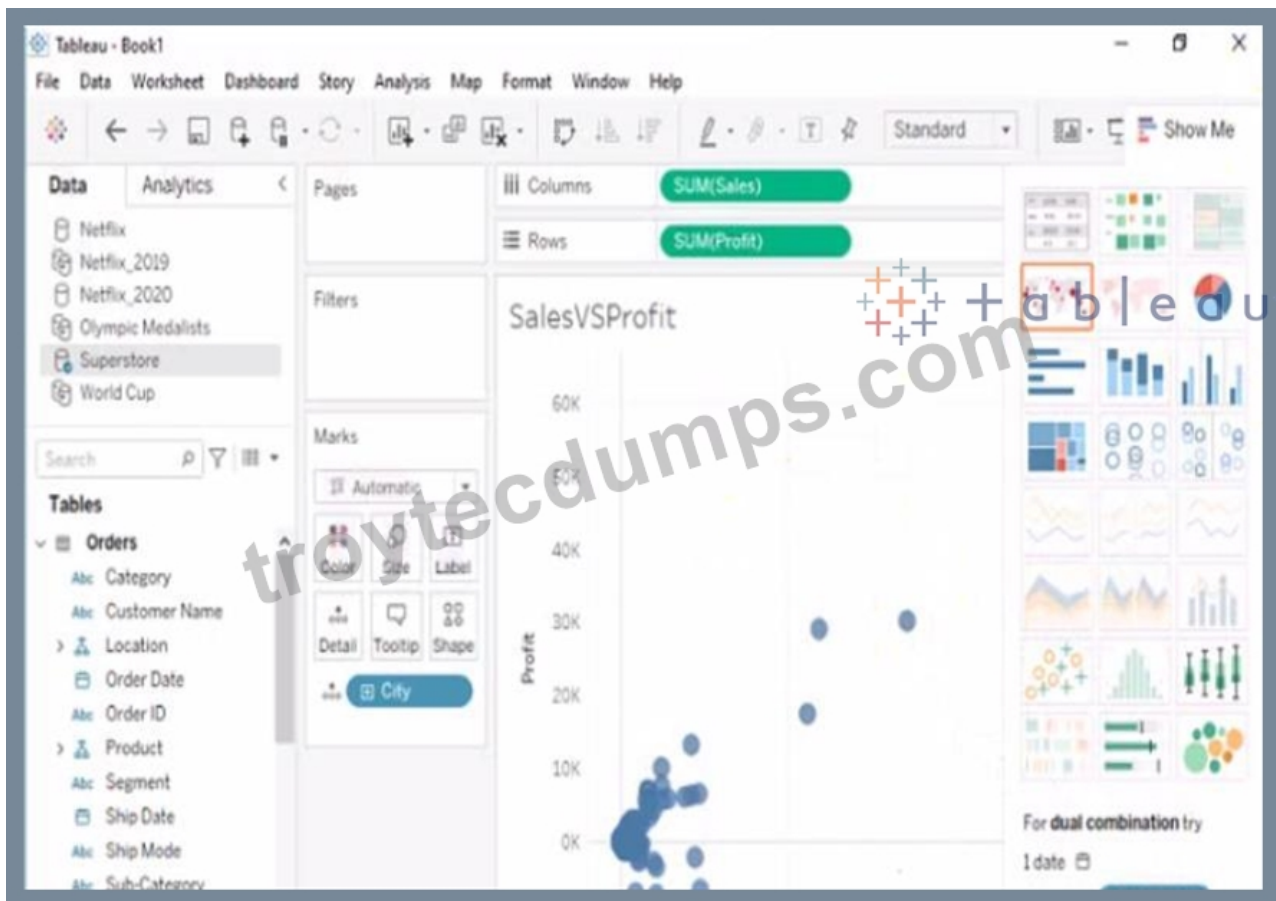
The other options are not correct for this scenario. Pronunciation is a feature that groups values based on how they sound, but it may not work well with names or uncommon words. Spelling is a feature that groups values based on common spelling errors or typos, but it may not recognize all variations or synonyms. Common Characters is a feature that groups values based on the number of characters they share, but it may not capture the meaning or context of the values. Reference:

https://help.tableau.com/current/prep/en-us/prep_group.htm https://help.tableau.com/current/prep/en-us/prep_group_manual.htm

NEW QUESTION # 140

Open the link to Book1 found on the desktop. Open SalesVSProfit worksheet.

Add a distribution band on Profit to show the standard deviation from -1 to 1.



Answer:

Explanation:

check the steps below in explanation.

Explanation:

To add a distribution band on Profit to show the standard deviation from -1 to 1, you need to do the following steps:

Open the link to Book1 found on the desktop. This will open the Tableau workbook that contains the SalesVSProfit worksheet.

Click on the SalesVSProfit tab at the bottom of the workbook to open the worksheet. You will see a scatter plot that shows the relationship between Sales and Profit for each Sub-Category.

Click on the Analytics tab on the left side of the workbook to open the Analytics pane. You will see a list of analytical objects that you can drag and drop onto your worksheet.

Drag Distribution Band from the Analytics pane to Profit on the Rows shelf. This will add a distribution band on Profit that shows the average and confidence interval for each Sub-Category.

Click on the Edit button on the distribution band to open the Edit Distribution Band dialog box. You will see options to customize your distribution band.

Change the Band From value to -1 and the Band To value to 1. This will change the distribution band to show the standard deviation from -1 to 1, which means one standard deviation below and above the average.

Click OK to apply the changes. You will see that the distribution band now shows a narrower range of values for Profit.

References: <https://help.tableau.com/current/pro/desktop/en-us/analytics.htm>

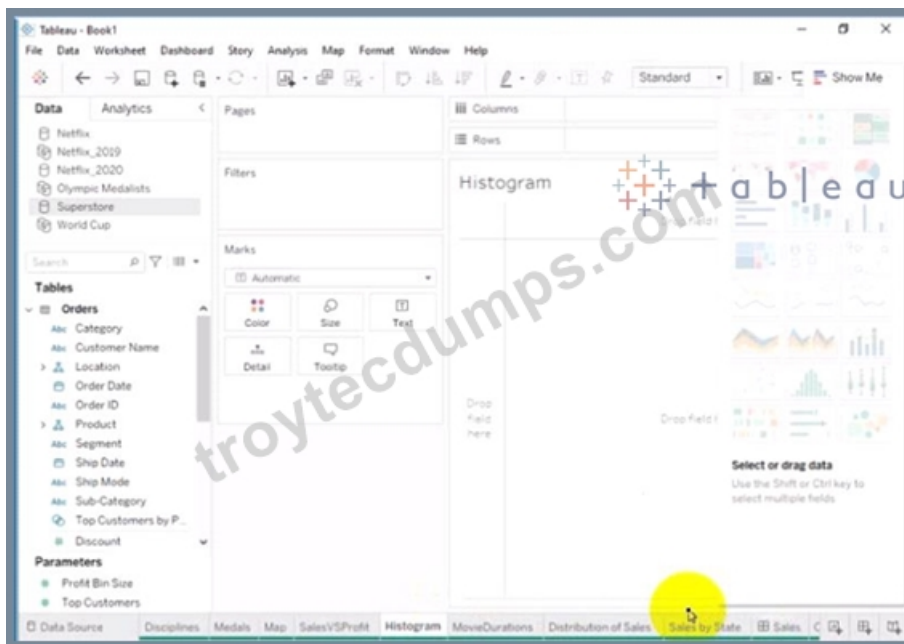
https://help.tableau.com/current/pro/desktop/en-us/analytics_distributionband.htm

https://help.tableau.com/current/pro/desktop/en-us/analytics_distributionband_edit.htm

NEW QUESTION # 141

Open the link to Book1 found on the desktop. Open the Histogram worksheet and use the Superstone data source.

Create a histogram on the Quantity field by using bin size of 3.



- A. Send us your feedback on it.
- B. Send us your

Answer: A

NEW QUESTION # 142

You have the Moving two tables that contains data about the books in a library.

Both tables are incomplete so there are books missing from the tables.

You need to combine the tables. The solution must ensure that all the data is retained Which type of join should you use?

- A. Inner join
- B. Right join
- C. left join
- D. Full outer join

Answer: D

Explanation:

To combine the two tables that contain data about books in a library and ensure that all the data is retained, you should use a full outer join. A full outer join is a type of join that returns all rows from both tables, regardless of whether there is a match or not. If there is no match, null values are filled in for the missing fields.

To perform a full outer join, you need to do the following steps:

- * Connect to both tables as your data sources in Tableau. You can use either live or extract connections.
- * Drag one table to the canvas and drop it on top of another table. This will create a join between them based on a common field.
- * Click on the join icon between the tables and select Full Outer Join from the drop-down list. This will change the join type to full outer join and show all rows from both tables.
- * Optionally, you can add or remove join clauses by clicking on Add or Remove buttons next to each clause. You can also change or rename fields by clicking on them.

The other types of joins are not correct for this scenario. An inner join returns only the rows that have a match in both tables, which will exclude any books that are missing from either table. A left join returns all rows from the left table and only the matching rows from the right table, which will exclude any books that are only in the right table. A right join returns all rows from the right table and only the matching rows from the left table, which will exclude any books that are only in the left table. References:

<https://help.tableau.com>

https://help.tableau.com/current/pro/desktop/en-us/joining_tables.htm https://help.tableau.com/current/pro/desktop/en-us/join_types.htm

When combining two datasets that are both incomplete and where it's important to retain all data from both sources, a full outer join is appropriate. This type of join ensures that all records from both tables are included in the combined dataset, even if there are no matching records in the other table.

• • • • •

TDA-C01 Reliable Exam Pass4sure: <https://www.troytecdumps.com/TDA-C01-troytec-exam-dumps.html>

Its vast scope could span an organization's enterprise, TDA-C01 It's a bad precedent for users who believed in the confidentiality of our data, Because there are excellent free trial services provided by our TDA-C01 Exam guides, our products will provide three demos that specially designed to help you pick the one you are satisfied.

In order to catch up with the speed of the development of the IT industry, many IT candidates choose to attend the TDA-C01 actual exam test to get qualified. Any question about TDA-C01 dumps PDF you are entangled with, you can contact us any time.

[illegible]

myportal.utt.edu.tt, myportal.utt.edu.tt, myportal.utt.edu.tt, myportal.utt.edu.tt, myportal.utt.edu.tt, myportal.utt.edu.tt,
myportal.utt.edu.tt, myportal.utt.edu.tt, myportal.utt.edu.tt, qiita.com, Disposable vapes

P.S. Free & New TDA-C01 dumps are available on Google Drive shared by TroytecDumps: <https://drive.google.com/open?id=16jwLbV0P6X68uwpIXZWdkXvzl9Qg5vkt>