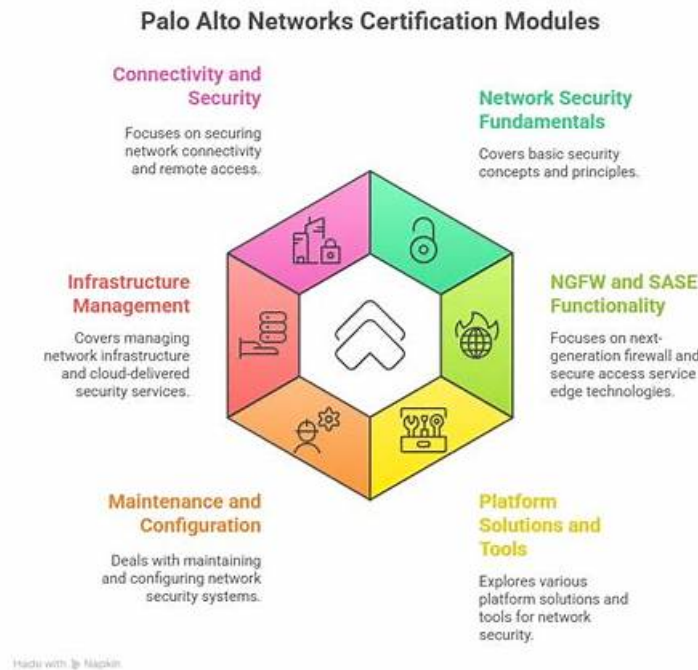


# Palo Alto Networks Cloud Security Professional valid training collection & CloudSec-Pro study prep torrent & Palo Alto Networks Cloud Security Professional exam practice pdf



BONUS!!! Download part of Actual4dump CloudSec-Pro dumps for free: [https://drive.google.com/open?id=1W6z83xBu9rZNIG8dtrxjuniKhHEL\\_ZzI](https://drive.google.com/open?id=1W6z83xBu9rZNIG8dtrxjuniKhHEL_ZzI)

We are proud that we have engaged in this career for over ten years and helped tens of thousands of the candidates achieve their CloudSec-Pro certifications, and our CloudSec-Pro exam questions are becoming increasingly obvious degree of helping the exam candidates with passing rate up to 98 to 100 percent. All our behaviors are aiming squarely at improving your chance of success on the CloudSec-Pro Exam and we have the strength to give you success guarantee.

## Palo Alto Networks CloudSec-Pro Exam Syllabus Topics:

Topic	Details
Topic 1	<ul style="list-style-type: none"> <li>• <b>Cortex Fundamentals:</b> This domain focuses on the core features of the Cortex Cloud platform, including indicator types, log management, asset inventory, compliance, and data protection. It also covers how to create reports and dashboards and how data sources are ingested into the platform.</li> </ul>
Topic 2	<ul style="list-style-type: none"> <li>• <b>Cloud Runtime Security:</b> This domain addresses the protection of cloud workloads during active operation, covering cloud workload protection, detection and response, web application and API security, and vulnerability management. It also includes the processes involved in deploying and managing security agents.</li> </ul>
Topic 3	<ul style="list-style-type: none"> <li>• <b>Cloud Posture Security:</b> This domain examines the tools and practices used to assess and manage cloud security posture, spanning CSPM, KSPM, AI-SPM, and DSPM. It also covers agentless scanning, identity security, vulnerability management, unified compliance, and the role of Posture Security Management Modules.</li> </ul>

Topic 4	<ul style="list-style-type: none"> <li>• Application Security: This domain covers security practices integrated throughout the software development lifecycle, including application security posture management, CI</li> <li>• CD pipeline security, software composition analysis, IaC security, and secrets scanning. It also explores real-world application security use cases and scan management.</li> </ul>
Topic 5	<ul style="list-style-type: none"> <li>• Security Operations Center (SOC) Fundamentals: This domain covers the foundational components of a SOC, including team roles, tools, and technologies used in day-to-day security operations. It also addresses how AI</li> <li>• ML and threat intelligence support incident response, categorization, and prioritization.</li> </ul>

>> CloudSec-Pro Exam Sample <<

## Get Access To Palo Alto Networks CloudSec-Pro Questions Using Three Different Formats

Three formats of Palo Alto Networks Cloud Security Professional (CloudSec-Pro) practice material are always getting updated according to the content of real Palo Alto Networks Cloud Security Professional (CloudSec-Pro) examination. The 24/7 customer service system is always available for our customers which can solve their queries and help them if they face any issues while using the CloudSec-Pro Exam product. Besides regular updates, Actual4dump also offer up to 1 year of free real Palo Alto Networks Cloud Security Professional (CloudSec-Pro) exam questions updates.

## Palo Alto Networks Cloud Security Professional Sample Questions (Q194-Q199):

### NEW QUESTION # 194

Which RQL query will help create a custom identity and access management (IAM) policy to alert on Lambda functions that have permission to terminate EC2 instances?

- A. `config from iam where dest.cloud.type = 'AWS' AND source.cloud.service.name = 'ec2' AND source.cloud.resource.type = 'instance' AND dest.cloud.service.name = 'lambda' AND action.name = 'ec2:TerminateInstances'`
- B. `iam from cloud.resource where cloud.type equals 'AWS' AND cloud.resource.type equals 'lambda function' AND cloud.service.name = 'ec2' AND action.name equals 'ec2:TerminateInstances'`
- C. `iam from cloud.resource where dest.cloud.type = 'AWS' AND source.cloud.service.name = 'lambda' AND source.cloud.resource.type = 'function' AND dest.cloud.service.name = 'ec2' AND action.name = 'ec2:TerminateInstances'`
- D. `config from iam where dest.cloud.type = 'AWS' AND source.cloud.service.name = 'lambda' AND source.cloud.resource.type = 'function' AND dest.cloud.service.name = 'ec2' AND action.name = 'ec2:TerminateInstances'`

**Answer: D**

### NEW QUESTION # 195

An administrator for Prisma Cloud needs to obtain a graphical view to monitor all connections, including connections across hosts and connections to any configured network objects.

Which setting does the administrator enable or configure to accomplish this task?

- A. WAAS Analytics
- B. Host Insight
- C. Cloud Native Network Firewall
- D. ADEM
- E. Telemetry

**Answer: C**

Explanation:

Reference: <https://docs.paloaltonetworks.com/prisma/prisma-cloud/21-04/prisma-cloud-compute-edition->

admin/firewalls/cnmf\_self\_hosted.html To obtain a graphical view to monitor all connections, including those across hosts and to configured network objects within Prisma Cloud, the appropriate feature to enable or configure is the Cloud Native Network Firewall (Option D). Prisma Cloud's Cloud Native Network Firewall provides visibility into network traffic and allows for the monitoring and control of network flows within the cloud environment, effectively enabling administrators to visualize and secure inter-host communications and connections to network objects. ADEM (Option A) and WAAS Analytics (Option B) are not related to Prisma Cloud's capabilities for monitoring connections. Telemetry (Option C) involves the collection of data and metrics but does not specifically provide a graphical view of connections. Host Insight (Option E) focuses on providing visibility into host-related activities and vulnerabilities but does not specifically deal with monitoring network connections in the graphical manner described.

#### NEW QUESTION # 196

Which intensity setting for anomaly alerts is used for the measurement of 100 events over 30 days?

- A. Medium
- B. Low
- C. Very High
- D. High

**Answer: A**

Explanation:

In the context of setting anomaly alert intensities in Prisma Cloud, an intensity setting of "Medium" could be used for the measurement of 100 events over 30 days. This setting indicates a moderate level of anomaly detection sensitivity, which is suitable for environments where there is a need to balance between detecting potential security issues and minimizing false positives.

Reference: <https://docs.paloaltonetworks.com/prisma/prisma-cloud/prisma-cloud-admin/manage-prisma-cloud-administrators/define-prisma-cloud-enterprise-settings.html>

<https://docs.paloaltonetworks.com/prisma/prisma-cloud/prisma-cloud-admin/manage-prisma-cloud-administrators/define-prisma-cloud-enterprise-settings>

#### NEW QUESTION # 197

Which two of the following are required to be entered on the IdP side when setting up SSO in Prisma Cloud?  
(Choose two.)

- A. SP (Service Provider) Entity ID
- B. Username
- C. SSO Certificate
- D. Assertion Consumer Service (ACS) URL

**Answer: A,D**

Explanation:

When setting up Single Sign-On (SSO) in Prisma Cloud on the Identity Provider (IdP) side, it is essential to configure the Assertion Consumer Service (ACS) URL and the Service Provider (SP) Entity ID. The ACS URL is the endpoint to which the IdP will send the SAML assertion, and the SP Entity ID is a unique identifier for the service provider that often resembles a URL but does not necessarily point to a location.

These elements are crucial for establishing the trust relationship between the IdP and the service provider, enabling secure user authentication and authorization.

#### NEW QUESTION # 198

What should be used to associate Prisma Cloud policies with compliance frameworks?

- A. Custom compliance
- B. Compliance
- C. Alert rules
- D. Policies

**Answer: A**

#### Explanation:

In the context of associating Prisma Cloud policies with compliance frameworks, the most appropriate option is "Custom compliance." Prisma Cloud provides a comprehensive set of security and compliance policies that can be applied to cloud environments. While predefined policies cover a wide range of compliance standards and best practices, every organization has unique requirements and may follow specific compliance frameworks that are not directly included in the predefined policies. Custom compliance allows organizations to define their own compliance frameworks and associate specific Prisma Cloud policies with these custom frameworks. This flexibility ensures that organizations can maintain compliance with their specific regulatory and industry standards, tailoring the Prisma Cloud policies to meet their unique compliance needs. Custom compliance frameworks can be created within Prisma Cloud to include a collection of policies that address the specific controls and requirements of the organization's chosen compliance standards, providing a tailored approach to cloud security and compliance.

#### NEW QUESTION # 199

.....

Because many users are first taking part in the exams, so for the exam and test time distribution of the above lack certain experience, and thus prone to the confusion in the examination place, time to grasp, eventually led to not finish the exam totally. In order to avoid the occurrence of this phenomenon, the Palo Alto Networks Cloud Security Professional study question have corresponding products to each exam simulation test environment, users log on to their account on the platform, at the same time to choose what they want to attend the exam simulation questions, the CloudSec-Pro Exam Questions are automatically for the user presents the same as the actual test environment simulation test system, the software built-in timer function can help users better control over time, so as to achieve the systematic, keep up, as well as to improve the user's speed to solve the problem from the side with our CloudSec-Pro test guide.

**CloudSec-Pro Test Objectives Pdf:** <https://www.actual4dump.com/Palo-Alto-Networks/CloudSec-Pro-actualtests-dumps.html>

- CloudSec-Pro Exam Dumps Demo  CloudSec-Pro Dumps Discount  Latest CloudSec-Pro Exam Testking  Search for > CloudSec-Pro < and easily obtain a free download on > [www.troytecdumps.com](http://www.troytecdumps.com)   New CloudSec-Pro Exam Questions
- Latest CloudSec-Pro Exam Guide  New CloudSec-Pro Exam Questions  CloudSec-Pro Practice Test Engine  Download  CloudSec-Pro  for free by simply entering 《 [www.pdfvce.com](http://www.pdfvce.com) 》 website  CloudSec-Pro Brain Dumps
- Free PDF Quiz 2026 Newest Palo Alto Networks CloudSec-Pro Exam Sample  Search for  CloudSec-Pro  and download it for free immediately on ➔ [www.easy4engine.com](http://www.easy4engine.com)   CloudSec-Pro Dumps Discount
- Customizable CloudSec-Pro Practice Test Software (Desktop - Web-Based)  Go to website ➔ [www.pdfvce.com](http://www.pdfvce.com)  open and search for ➔ CloudSec-Pro   to download for free  Valid CloudSec-Pro Exam Review
- Authorized CloudSec-Pro Pdf  CloudSec-Pro New Question  CloudSec-Pro Valid Braindumps Book  Search for ( CloudSec-Pro ) and download it for free immediately on ➔ [www.validtorrent.com](http://www.validtorrent.com)   CloudSec-Pro Reliable Exam Pdf
- Pass Guaranteed Palo Alto Networks - High Hit-Rate CloudSec-Pro - Palo Alto Networks Cloud Security Professional Exam Sample  Search for ☀: CloudSec-Pro ☀:  and download exam materials for free through ✓ [www.pdfvce.com](http://www.pdfvce.com)  ✓  CloudSec-Pro Brain Dumps
- Free PDF 2026 Palo Alto Networks Unparalleled CloudSec-Pro Exam Sample  Search for ⇒ CloudSec-Pro ⇐ and easily obtain a free download on > [www.testkingpass.com](http://www.testkingpass.com) <  CloudSec-Pro Valid Test Book
- Latest CloudSec-Pro Exam Guide  Latest CloudSec-Pro Exam Guide ↓ CloudSec-Pro New Question  Search for 《 CloudSec-Pro 》 on  [www.pdfvce.com](http://www.pdfvce.com)  immediately to obtain a free download  CloudSec-Pro PDF
- CloudSec-Pro New Exam Braindumps  Current CloudSec-Pro Exam Content  Latest CloudSec-Pro Exam Guide   Immediately open ⇒ [www.prepawaypdf.com](http://www.prepawaypdf.com) ⇐ and search for ⇒ CloudSec-Pro ⇐ to obtain a free download   CloudSec-Pro Brain Dumps
- Pass Guaranteed Palo Alto Networks - High Hit-Rate CloudSec-Pro - Palo Alto Networks Cloud Security Professional Exam Sample  Search for  CloudSec-Pro  on  [www.pdfvce.com](http://www.pdfvce.com)  immediately to obtain a free download   CloudSec-Pro Practice Test Engine
- Pass Guaranteed Palo Alto Networks - High Hit-Rate CloudSec-Pro - Palo Alto Networks Cloud Security Professional Exam Sample  Easily obtain free download of ✓ CloudSec-Pro  ✓  by searching on 「 [www.pdfdumps.com](http://www.pdfdumps.com) 」  CloudSec-Pro PDF
- [socialupme.com](http://socialupme.com), [blaketrng047441.therainblog.com](http://blaketrng047441.therainblog.com), [bookmarksfocus.com](http://bookmarksfocus.com), [aliciaykow382318.blogs100.com](http://aliciaykow382318.blogs100.com), [dillanvxmn811619.p2blogs.com](http://dillanvxmn811619.p2blogs.com), [fraserbgjh278165.wikibuyse.com](http://fraserbgjh278165.wikibuyse.com), [craigxjkw158203.onzeblog.com](http://craigxjkw158203.onzeblog.com), [myportal.utt.edu.tt](http://myportal.utt.edu.tt), [myportal.utt.edu.tt](http://myportal.utt.edu.tt), [myportal.utt.edu.tt](http://myportal.utt.edu.tt), [myportal.utt.edu.tt](http://myportal.utt.edu.tt), [myportal.utt.edu.tt](http://myportal.utt.edu.tt), [myportal.utt.edu.tt](http://myportal.utt.edu.tt), [myportal.utt.edu.tt](http://myportal.utt.edu.tt), [myportal.utt.edu.tt](http://myportal.utt.edu.tt), [myportal.utt.edu.tt](http://myportal.utt.edu.tt), [myportal.utt.edu.tt](http://myportal.utt.edu.tt), [louisep1nj182735.wikiinside.com](http://louisep1nj182735.wikiinside.com), [haseebelld932652.life-wiki.com](http://haseebelld932652.life-wiki.com), Disposable vapes

2026 Latest Actual4dump CloudSec-Pro PDF Dumps and CloudSec-Pro Exam Engine Free Share: <https://drive.google.com/open?>

id=1W6z83xBu9rZNIg8dtrxjuniKhHEL\_ZzI