

Adobe AD0-E605合格資料、AD0-E605日本語復習赤本



無料でクラウドストレージから最新のPass4Test AD0-E605 PDFダンプをダウンロードする：<https://drive.google.com/open?id=10FsZhabvyTteZKgs2t8JO9QU3SEIj8I>

専門家と他の作業スタッフの熱心な献身により、当社のAD0-E605学習教材はより成熟し、困難に立ち向かうことができます。AD0-E605準備試験は、業界で高い合格率を達成しており、AD0-E605試験問題では、絶え間ない努力で常に99%の合格率を維持しています。私たちは、このようなスターのような人物の背後に、当社からの大量投資を受け入れていることを認めなければなりません。当社の設立以来、私たちはAD0-E605試験資料に大量の人材、資料、資金を投入しました。

Adobe AD0-E605 認定試験の出題範囲：

トピック	出題範囲
トピック 1	<ul style="list-style-type: none">Real-Time Customer Profile: Covers how profiles are assembled and composed, how the Identity Graph works, and the differences between edge and hub profiles.
トピック 2	<ul style="list-style-type: none">Data Ingestion: Covers general and edge data ingestion capabilities within the CDP and advanced architectural techniques for efficient data ingestion.
トピック 3	<ul style="list-style-type: none">Segmentation: Covers methods for building audiences and segments, the various segmentation types and how they operate, and applying use cases to segment activation.
トピック 4	<ul style="list-style-type: none">Governance: Covers data governance best practices for Adobe RT-CDP implementations and managing data across the platform's various services.
トピック 5	<ul style="list-style-type: none">Data Architecture: Covers translating RDBMS to Adobe RT-CDP's NoSQL model, best practices for profile modeling, and designing identity strategies and entity relationships.
トピック 6	<ul style="list-style-type: none">Administration: Covers monitoring tools, alerts, license usage types, and use cases for Attribute-Based Access Control (ABAC) within Adobe RT-CDP.

>> Adobe AD0-E605合格資料 <<

AD0-E605日本語復習赤本、AD0-E605資格認定試験

人々は自分が将来何か成績を作るようにずっと努力しています。IT業界でのあなたも同じでしょう。自分の能力を高めるために、AD0-E605試験に参加する必要があります。AD0-E605試験に合格したら、あなたがより良く就職し輝かしい未来を持っています。この試験が非常に困難ですが、実は試験を準備するとき、もっと楽になることができます。我々のAD0-E605問題集を入手するのはあなたの進めるべきの第一歩です。

Adobe Real-Time CDP Business Practitioner Professional 認定 AD0-E605 試験問題 (Q35-Q40):

質問 # 35

A data engineer creates a custom identity namespace within Adobe Experience Platform. However, this custom Identity namespace is the wrong Identity type. What would the data engineer do to correct the situation?

- A. Create a new custom Identity Namespace with the correct Identity type
- B. Edit the Identity Namespace type within the Adobe Experience Platform User-interface under Identities
- C. Delete the custom Identity Namespace from the Adobe Experience Platform User-Interface under Identities
- D. Using the Identity Namespace APIs, update the custom Identity type

正解: A

解説:

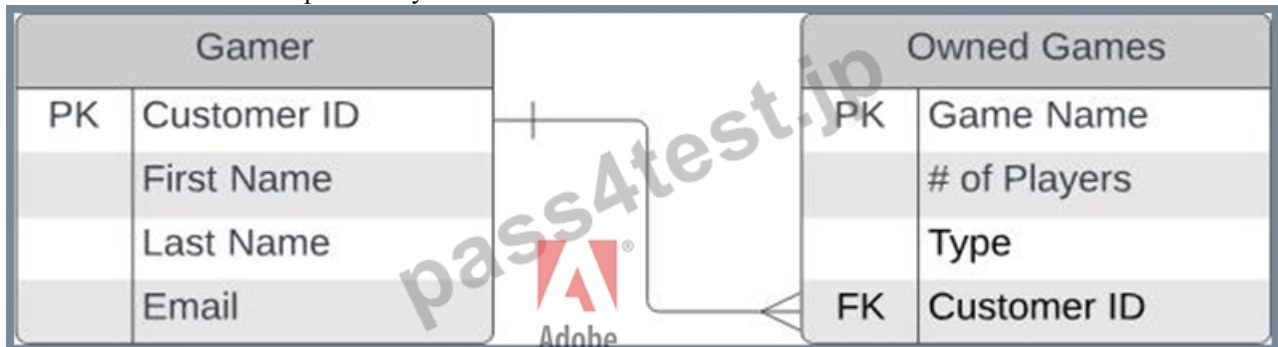
In Adobe Experience Platform, once an Identity Namespace is created and saved, its core configuration- specifically the Identity Type (e.g., Cross-device, Phone, or Email)-becomes immutable. The platform's architecture does not allow for the editing of an existing namespace's type via the User Interface (UI) or the Identity Namespace APIs due to the potential for severe data corruption within the Identity Graph.

If an Identity Namespace is created with the wrong type, the only corrective action is to create a new custom Identity Namespace with the correct parameters. It is important to note that Identity Namespaces cannot be "deleted" in the traditional sense if they have already been used to ingest data or are linked in a graph. While you can hide them or stop using them, the original erroneous namespace will persist in the system's metadata.

Choosing Option C is the standard operational procedure. After creating the correct namespace, the data engineer must update the corresponding XDM schema to point to the new namespace and re-ingest or backfill the data to ensure that the Identity Service accurately reconciles the identities. Options A and B are technically impossible within the current AEP framework. Option D is incorrect because the platform generally restricts the deletion of namespaces once they are registered to prevent breaking existing identity links and historical profile fragments.

質問 # 36

A relational diagram can be seen in the exhibit; a Gamer (parent entity) is shown to have many Owned Games (child entity). Each owned game is essentially a property of the gamer. Looking at this diagram, what would a data architect say about how the Owned Games table will act within the parent entity?



- A. Acts as an array of values
- B. Acts as an object
- C. Acts as an object array
- D. Acts as a new schema

正解: C

質問 # 37

A data engineer is working on a schema that has not been enabled for profile and contains an out-of-the-box field group. In addition to adding a relationship and marking as identity, what is a valid change that can be made to the out-of-the-box field group?

- A. Mark as required

- B. Change the data type of an out-of-the-box field
- **C. Change the display name**
- D. Change the field name

正解: C

質問 # 38

A data engineer is troubleshooting an issue where clickstream data being ingested via Adobe's Web SDK into Adobe Real-Time CDP is not populating the desired segment. The segment is looking for visitors who have added an item to their cart but have not made a purchase in over 30 days. The source data consists of user interactions, collected in real-time. It is available in a structured format and includes information like click timestamp, visitor ID, event type (page view, item added to cart, purchase, etc.), and item details.

What is the possible cause for the error when trying to create the Edge Segment?

- A. The data being ingested does not include timestamp information
- **B. The segment logic of 30 days between events does not meet Edge segmentation criteria.**
- C. The data engineer has not specified that the data should populate this segment during ingestion.
- D. The SDK has not been configured to send data to the platform

正解: B

解説:

Adobe Experience Platform Edge Segmentation is designed for ultra-low latency personalization and carries specific architectural guardrails that differ from Hub-based (Batch or Streaming) segmentation. One of the primary limitations of Edge Segmentation is the lookback window and the complexity of time-based event relationships.

Edge segmentation is optimized for "in-session" or very recent cross-session behavior. A segment requiring a 30-day lookback or a specific duration of inactivity (over 30 days) between two discrete events exceeds the current technical capabilities of the Edge Network's real-time evaluation engine. Edge segments typically support shorter lookback windows (typically up to 24 hours for certain attributes) and are intended to react to the "current" state of the user.

Option B is incorrect because Web SDK automatically includes timestamps. Option C is incorrect because segments are evaluated against ingested data based on rules, not manual "population" flags during ingestion.

Option D is unlikely as the prompt implies the data is being ingested but just not populating the segment.

Therefore, the "30 days" logic is the root cause; while this segment would work perfectly as a Batch Segment in the Hub, it is ineligible for Edge Segmentation due to the memory and processing requirements of maintaining a 30-day state at the network edge.

質問 # 39

A marketer would like to create an Audience by ranking the existing set based on the loyalty points, and select the top 1000 profiles. The marketer would also like to enrich the audience with additional attributes like city and gender from a profile enabled record type dataset. The marketer wishes to accomplish all of this using Adobe Experience Platform.

Which method should the marketer use to create an Audience to achieve this?

- A. Apply filters to create a "Ranked audience" using the dataset
- **B. Compose Audience**
- C. Rule-based Audience
- D. Import Audience

正解: B

質問 # 40

.....

当社Pass4Testは、製品の品質が非常に重要であることを深く知っているため、AD0-E605テストトレンドの高品質の開発に注力しています。当社の製品を購入したすべてのお客様は、AD0-E605ガイド急流に深い印象を残しています。もちろん、顧客は製品の品質だけでなく、製品の効率性にも深い印象を残しています。AD0-E605試験の質問は多くの時間を節約するのに役立ちます。AD0-E605試験準備を使用する場合、学習に20~30時間を費やすだけで、AD0-E605試験に合格できます。

AD0-E605日本語復習赤本: <https://www.pass4test.jp/AD0-E605.html>

- AD0-E605テキスト □ AD0-E605対応問題集 □ AD0-E605最新知識 □ ウェブサイト □ www.passtest.jp □ から「AD0-E605」を開いて検索し、無料でダウンロードしてくださいAD0-E605最速合格
- AD0-E605認定資格試験問題集 □ AD0-E605受験トレーニング □ AD0-E605全真模擬試験 □ “www.goshiken.com”から（AD0-E605）を検索して、試験資料を無料でダウンロードしてくださいAD0-E605参考資料
- 完璧なAD0-E605合格資料 - 合格スムーズAD0-E605日本語復習赤本 | 便利なAD0-E605資格認定試験 □ ➡ www.goshiken.com □ を入力して □ AD0-E605 □ を検索し、無料でダウンロードしてくださいAD0-E605対応問題集
- AD0-E605試験の準備方法 | 正確なAD0-E605合格資料試験 | 認定するAdobe Real-Time CDP Business Practitioner Professional日本語復習赤本 □ Open Webサイト 【 www.goshiken.com 】 検索▷ AD0-E605 ◁無料ダウンロードAD0-E605資格トレーニング
- AD0-E605資格取得講座 □ AD0-E605最速合格 □ AD0-E605模擬問題 □ （ www.passtest.jp ）には無料の“AD0-E605”問題集がありますAD0-E605模擬試験最新版
- AD0-E605最新知識 □ AD0-E605受験練習参考書 □ AD0-E605復習テキスト □ 最新{ AD0-E605 }問題集ファイルは“www.goshiken.com”にて検索AD0-E605最新知識
- AD0-E605模擬問題 □ AD0-E605受験練習参考書 □ AD0-E605復習テキスト □ URL ▶ www.passtest.jp ◀をコピーして開き、▶ AD0-E605 □ を検索して無料でダウンロードしてくださいAD0-E605認定資格試験問題集
- AD0-E605受験練習参考書 □ AD0-E605テキスト □ AD0-E605復習テキスト □ ✨ www.goshiken.com ✨ □ で ✓ AD0-E605 □ ✓ □ を検索し、無料でダウンロードしてくださいAD0-E605難易度
- ユニーク-完璧なAD0-E605合格資料試験-試験の準備方法AD0-E605日本語復習赤本 □ URL ⇒ www.jpexam.com ⇨ をコピーして開き、（AD0-E605）を検索して無料でダウンロードしてくださいAD0-E605対応問題集
- AD0-E605受験トレーニング □ AD0-E605日本語 □ AD0-E605復習問題集 □ ウェブサイト ➡ www.goshiken.com □ から“AD0-E605”を開いて検索し、無料でダウンロードしてくださいAD0-E605難易度
- AD0-E605受験練習参考書 □ AD0-E605復習テキスト □ AD0-E605模擬問題 □ ウェブサイト ➡ www.xhs1991.com □ から ➡ AD0-E605 □ を開いて検索し、無料でダウンロードしてくださいAD0-E605資格トレーニング
- www.stes.tyc.edu.tw, www.stes.tyc.edu.tw, www.stes.tyc.edu.tw, margiekip440091.estate-blog.com, disqus.com, socialdosa.com, kailyncowj648749.blog-a-story.com, emilieqfwb410501.muzwiki.com, www.stes.tyc.edu.tw, www.stes.tyc.edu.tw, Disposable vapes

さらに、Pass4Test AD0-E605ダンプの一部が現在無料で提供されています：<https://drive.google.com/open?id=10FsZhabvyTteZKgs2t8JO9QU3SEIij8I>