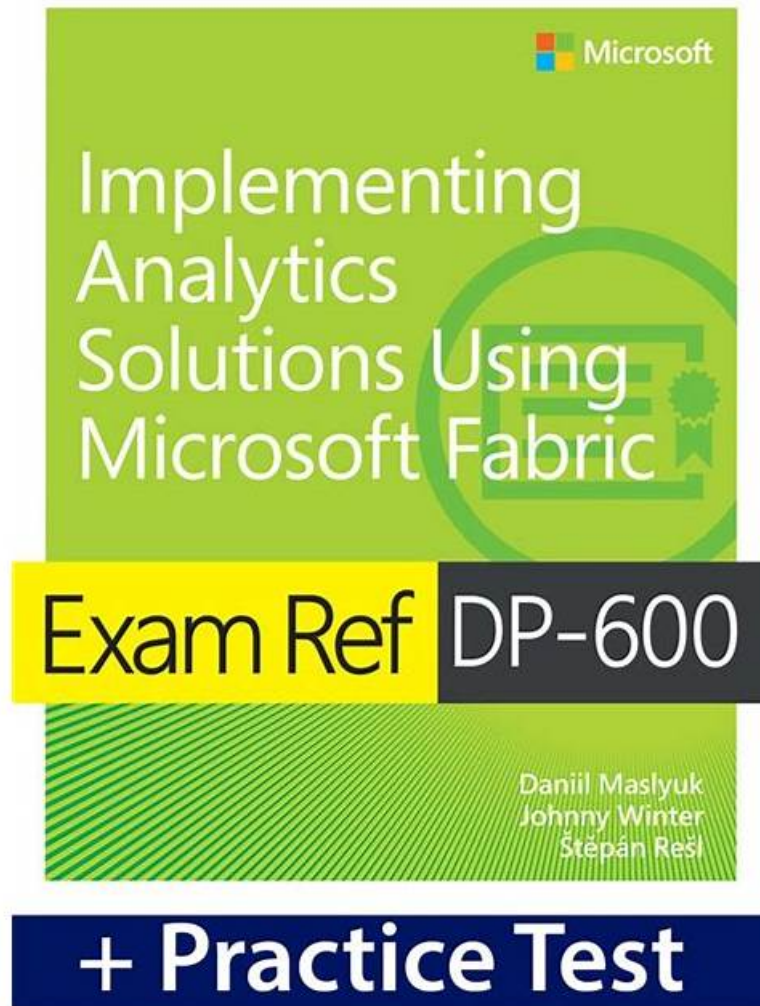


Pass-Sure Certification DP-600 Sample Questions Supply you Marvelous Exam Engine for DP-600: Implementing Analytics Solutions Using Microsoft Fabric to Prepare casually



P.S. Free & New DP-600 dumps are available on Google Drive shared by ExamDiscuss: <https://drive.google.com/open?id=1mQ7IWJPGGrTldbSRfbGYgwenWdUmYbhY1>

In the process of using DP-600 study question if the clients encounter the difficulties, the obstacles and the doubts they could contact our online customer service staff in the whole day. Our service team will update the DP-600 certification file periodically and provide one-year free update. Have known these advantages you may be curious to further understand the detailed information about our DP-600 training braindump and we list the detailed characteristics and functions of our DP-600 exam questions on the web for you to know.

If you are interested in purchasing valid and professional test prep materials, our DP-600 exam questions will be our wise choice. To know our questions details and format we provide free PDF demo of our DP-600 exam questions for your reference before purchasing. You will have a better understanding for your products. You will find our DP-600 Exam Guide torrent is accurate and helpful and then you will purchase our DP-600 training braindump happily. We provide free demo of DP-600 study guide download before purchasing.

>> Certification DP-600 Sample Questions <<

Microsoft Authoritative Certification DP-600 Sample Questions – Pass DP-600 First Attempt

You may feel astonished and doubtful about this figure; but we do make our DP-600 exam dumps well received by most customers. Better still, the 98-99% pass rate has helped most of the candidates get the certification successfully, which is far beyond that of others in this field. In recent years, supported by our professional expert team, our DP-600 test braindumps have grown up and have made huge progress. We pay emphasis on variety of situations and adopt corresponding methods to deal with. More successful cases of passing the DP-600 Exam can be found and can prove our powerful strength. As a matter of fact, since the establishment, we have won wonderful feedback and ceaseless business, continuously working on developing our DP-600 test prep. We have been specializing DP-600 exam dumps many years and have a great deal of long-term old clients, and we would like to be a reliable cooperator on your learning path and in your further development.

Microsoft DP-600 Exam Syllabus Topics:

Topic	Details
Topic 1	<ul style="list-style-type: none">• Prepare data: This section of the exam measures the skills of engineers and covers essential data preparation tasks. It includes establishing data connections and discovering sources through tools like the OneLake data hub and the real-time hub. Candidates must demonstrate knowledge of selecting the appropriate storage type—lakehouse, warehouse, or eventhouse—depending on the use case. It also includes implementing OneLake integrations with Eventhouse and semantic models. The transformation part involves creating views, stored procedures, and functions, as well as enriching, merging, denormalizing, and aggregating data. Engineers are also expected to handle data quality issues like duplicates, missing values, and nulls, along with converting data types and filtering. Furthermore, querying and analyzing data using tools like SQL, KQL, and the Visual Query Editor is tested in this domain.
Topic 2	<ul style="list-style-type: none">• Implement and manage semantic models: This section of the exam measures the skills of architects and focuses on designing and optimizing semantic models to support enterprise-scale analytics. It evaluates understanding of storage modes and implementing star schemas and complex relationships, such as bridge tables and many-to-many joins. Architects must write DAX-based calculations using variables, iterators, and filtering techniques. The use of calculation groups, dynamic format strings, and field parameters is included. The section also includes configuring large semantic models and designing composite models. For optimization, candidates are expected to improve report visual and DAX performance, configure Direct Lake behaviors, and implement incremental refresh strategies effectively.
Topic 3	<ul style="list-style-type: none">• Maintain a data analytics solution: This section of the exam measures the skills of administrators and covers tasks related to enforcing security and managing the Power BI environment. It involves setting up access controls at both workspace and item levels, ensuring appropriate permissions for users and groups. Row-level, column-level, object-level, and file-level access controls are also included, alongside the application of sensitivity labels to classify data securely. This section also tests the ability to endorse Power BI items for organizational use and oversee the complete development lifecycle of analytics assets by configuring version control, managing Power BI Desktop projects, setting up deployment pipelines, assessing downstream impacts from various data assets, and handling semantic model deployments using XMLA endpoint. Reusable asset management is also a part of this domain.

Microsoft Implementing Analytics Solutions Using Microsoft Fabric Sample Questions (Q130-Q135):

NEW QUESTION # 130

You have a Fabric warehouse that contains a table named Staging.Sales. Staging.Sales contains the following columns.

Name	Data type	Nullable
ProductID	Integer	No
ProductName	Varchar(30)	No
SalesDate	Datetime2(6)	No
WholesalePrice	Decimal(18, 2)	Yes
Amount	Decimal(18, 2)	Yes

You need to write a T-SQL query that will return data for the year 2023 that displays ProductID and ProductName and has a summarized Amount that is higher than 10,000. Which query should you use?

- A.

```
SELECT ProductID, ProductName, SUM(Amount) AS TotalAmount
FROM Staging.Sales
WHERE DATEPART(YEAR, SaleDate) = '2023'
GROUP BY ProductID, ProductName
HAVING TotalAmount > 10000
```
- B.

```
SELECT ProductID, ProductName, SUM(Amount) AS TotalAmount
FROM Staging.Sales
WHERE DATEPART(YEAR, SaleDate) = '2023' AND SUM(Amount) > 10000
```
- C.

```
SELECT ProductID, ProductName, SUM(Amount) AS TotalAmount
FROM Staging.Sales
WHERE DATEPART(YEAR, SaleDate) = '2023'
GROUP BY ProductID, ProductName
HAVING SUM(Amount) > 10000
```
- D.

```
SELECT ProductID, ProductName, SUM(Amount) AS TotalAmount
FROM Staging.Sales
GROUP BY ProductID, ProductName
HAVING DATEPART(YEAR, SaleDate) = '2023' AND SUM(Amount) > 10000
```

Answer: D

Explanation:

The correct query to use in order to return data for the year 2023 that displays ProductID, ProductName, and has a summarized Amount greater than 10,000 is Option B.

The reason is that it uses the GROUP BY clause to organize the data by ProductID and ProductName and then filters the result using the HAVING clause to only include groups where the sum of Amount is greater than 10,000. Additionally, the DATEPART(YEAR, SaleDate) = '2023' part of the HAVING clause ensures that only records from the year 2023 are included. Reference = For more information, please visit the official documentation on T-SQL queries and the GROUP BY clause at T-SQL GROUP BY.

NEW QUESTION # 131

Note: This section contains one or more sets of questions with the same scenario and problem. Each question presents a unique solution to the problem. You must determine whether the solution meets the stated goals.

More than one solution in the set might solve the problem. It is also possible that none of the solutions in the set solve the problem. After you answer a question in this section, you will NOT be able to return. As a result, these questions do not appear on the Review Screen.

Your network contains an on-premises Active Directory Domain Services (AD DS) domain named contoso.com that syncs with a Microsoft Entra tenant by using Microsoft Entra Connect.

You have a Fabric tenant that contains a semantic model.

You enable dynamic row-level security (RLS) for the model and deploy the model to the Fabric service.

You query a measure that includes the username () function, and the query returns a blank result.

You need to ensure that the measure returns the user principal name (UPN) of a user.

Solution: You create a role in the model.

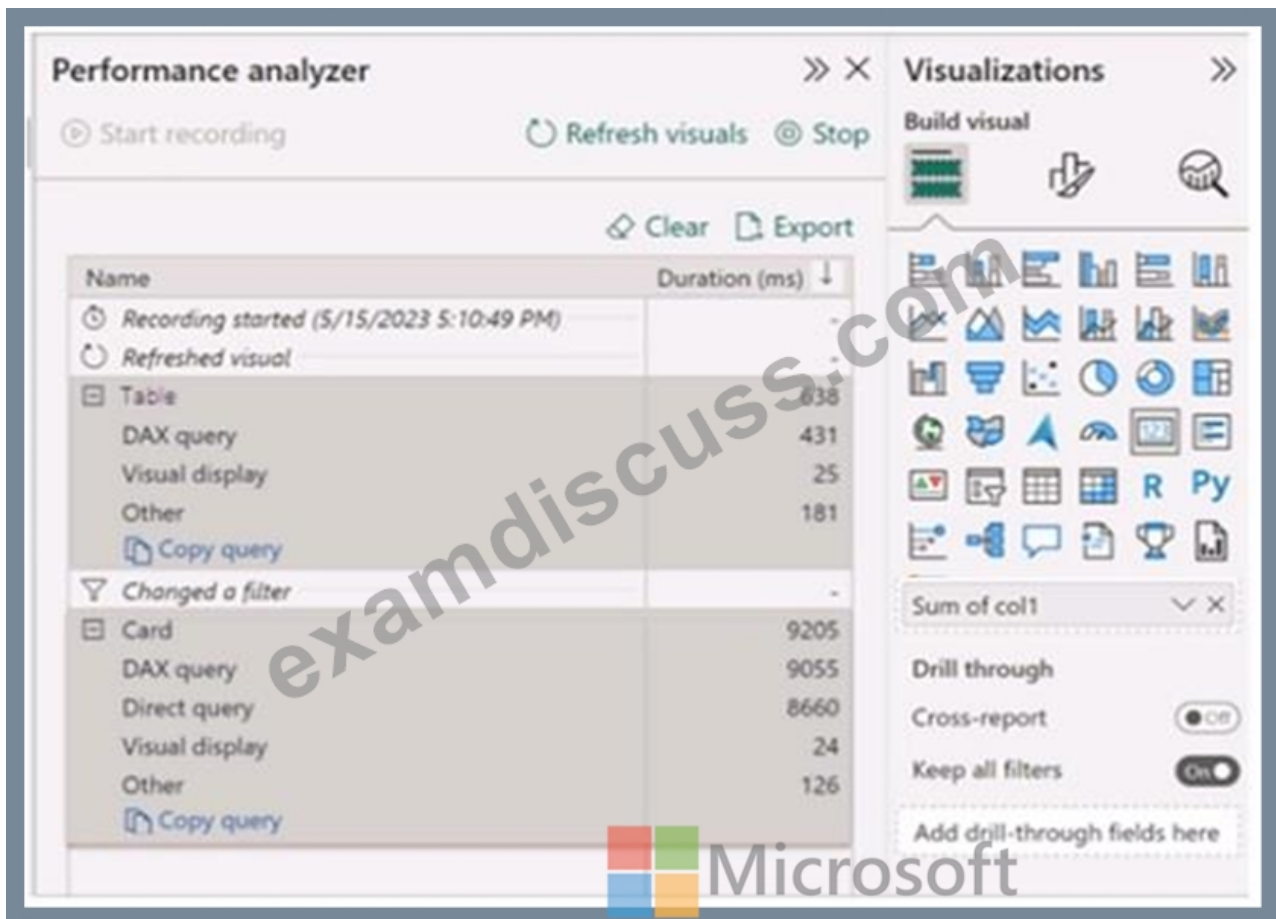
Does this meet the goal?

- A. No
- B. Yes

Answer: A

NEW QUESTION # 132

You have a Microsoft Power BI report and a semantic model that uses Direct Lake mode. From Power BI Desktop, you open Performance analyzer as shown in the following exhibit.



Use the drop-down menus to select the answer choice that completes each statement based on the information presented in the graphic. NOTE: Each correct selection is worth one point.

Answer Area

The Direct Lake fallback behavior is set to [answer choice].

DirectQueryOnly

Automatic

DirectLakeOnly

DirectQueryOnly

The query for the table visual is executed by using [answer choice].

the composite model

the composite model

Direct Lake

DirectQuery

Answer:

Explanation:

Answer Area

The Direct Lake fallback behavior is set to [answer choice].

DirectQueryOnly

Automatic

DirectLakeOnly

DirectQueryOnly

The query for the table visual is executed by using [answer choice].

the composite model

the composite model

Direct Lake

DirectQuery

NEW QUESTION # 133

You have a Fabric tenant that contains 30 CSV files in OneLake. The files are updated daily.

You create a Microsoft Power BI semantic model named Modell that uses the CSV files as a data source. You configure

incremental refresh for Model 1 and publish the model to a Premium capacity in the Fabric tenant. When you initiate a refresh of Model1, the refresh fails after running out of resources. What is a possible cause of the failure?

- A. Query folding is NOT occurring.
- **B. The data type of the column used to partition the data has changed.**
- C. Only refresh complete days is selected.
- D. XMLA Endpoint is set to Read Only.
- E. Query folding is occurring.

Answer: B

Explanation:

A possible cause for the failure is that query folding is NOT occurring (D). Query folding helps optimize refresh by pushing down the query logic to the source system, reducing the amount of data processed and transferred, hence conserving resources. References = The Power BI documentation on incremental refresh and query folding provides detailed information on this topic.

NEW QUESTION # 134

You have a Fabric tenant that contains a complex semantic model. The model is based on a star schema and contains many tables, including a fact table named Sales.

You need to create a diagram of the model. The diagram must contain only the Sales table and related tables.

What should you use from Microsoft Power BI Desktop?

- **A. Model view**
- B. DAX query view
- C. data categories
- D. Data view

Answer: A

Explanation:

In the Model view, it is possible to analyze the semantic model and create new layouts.

NEW QUESTION # 135

.....

As we all know, the influence of DP-600 exam guides even have been extended to all professions and trades in recent years. Passing the DP-600 exam is not only for obtaining a paper certification, but also for a proof of your ability. Most people regard Microsoft certification as a threshold in this industry, therefore, for your convenience, we are fully equipped with a professional team with specialized experts to study and design the most applicable DP-600 exam prepare. We have organized a team to research and study question patterns pointing towards various learners. Our company keeps pace with contemporary talent development and makes every learners fit in the needs of the society. Based on advanced technological capabilities, our DP-600 Study Materials are beneficial for the masses of customers. Our experts have plenty of experience in meeting the requirement of our customers and try to deliver satisfied DP-600 exam guides to them. Our DP-600 exam prepare is definitely better choice to help you go through the test.

DP-600 Exam Engine: <https://www.examdisscuss.com/Microsoft/exam/DP-600/>

- DP-600 Valid Test Preparation □ DP-600 Certification Training □ DP-600 Valid Test Sims □ Enter ➡ www.prep4away.com □ and search for □ DP-600 □ to download for free □ Pass DP-600 Guide
- Reliable Study DP-600 Questions □ DP-600 Valid Mock Test □ Valid Study DP-600 Questions □ Search for ✓ DP-600 □ ✓ □ and download it for free immediately on 【 www.pdfvce.com 】 □ DP-600 Valid Test Sims
- DP-600 Valid Test Preparation □ DP-600 Valid Test Sims □ DP-600 Dump □ Search on 【 www.easy4engine.com 】 for □ DP-600 □ to obtain exam materials for free download □ New DP-600 Exam Book
- DP-600 Visual Cert Exam □ DP-600 Latest Test Fee □ DP-600 Latest Test Fee □ Open (www.pdfvce.com) and search for { DP-600 } to download exam materials for free □ Latest DP-600 Test Preparation
- DP-600 Valid Test Preparation □ DP-600 Latest Exam Pdf □ DP-600 Valid Test Preparation □ Search on ⇒ www.pdfdumps.com ⇐ for ➡ DP-600 □ to obtain exam materials for free download □ DP-600 New Test Bootcamp
- Latest DP-600 Exam Materials: Implementing Analytics Solutions Using Microsoft Fabric give you the most helpful Training Dumps 📖 Immediately open [www.pdfvce.com] and search for ▷ DP-600 ◁ to obtain a free download □ Valid Study

DP-600 Questions

- [illegible]

BTW, DOWNLOAD part of ExamDiscuss DP-600 dumps from Cloud Storage: <https://drive.google.com/open?id=1mQ7IWJPGfTldbSRfbGYgwenWdUmYbhY1>