

# JPTestKing FCSS\_SASE\_AD-25認証資格/すぐにダウンロード



無料でクラウドストレージから最新のJPTestKing FCSS\_SASE\_AD-25 PDFダンプをダウンロードする：<https://drive.google.com/open?id=1Lts8WAugPuGsul3gtpFkWpUI8cRh73m>

Fortinetシラバスの変更と理論と実践の最新の開発状況に応じて、FCSS\_SASE\_AD-25試験のブレインダンプが改訂および更新されます。FCSS\_SASE\_AD-25試験トレントは、経験豊富な専門家によって高品質で精巧にまとめられています。FCSS\_SASE\_AD-25ガイドの質問の内容は簡単に習得でき、重要な情報を簡素化します。より重要な情報を少ない回答と質問で伝えるため、学習は簡単で効率的です。この言語は理解しやすいため、学習者がFCSS\_SASE\_AD-25試験に合格して合格するための障害はありません。

FCSS\_SASE\_AD-25試験問題の継続的な刷新により、当社は大きな市場シェアを占めています。強力な研究センターを構築し、FCSS\_SASE\_AD-25トレーニングガイドでより良い仕事をするために強力なチームを所有しています。これまで、FCSS\_SASE\_AD-25学習教材に関する多くの特許を取得しています。一方で、当社Fortinetは改修の恩恵を受けています。お客様は当社の製品を選択する可能性が高くなります。一方、私たちが投資したお金は有意義なものであり、FCSS\_SASE\_AD-25試験の新しい学習スタイルを刷新するのに役立ちます。

>> FCSS\_SASE\_AD-25認証資格 <<

## FCSS\_SASE\_AD-25真実試験 & FCSS\_SASE\_AD-25対応問題集

JPTestKingのFortinetのFCSS\_SASE\_AD-25試験トレーニング資料は全てのオンラインのトレーニング資料で一番よいものです。我々の知名度はとても高いです。これは受験生の皆さんが資料を利用した後の結果です。JPTestKingのFortinetのFCSS\_SASE\_AD-25試験トレーニング資料を選んだら、100パーセントの成功率を保証します。もし失敗だったら、我々は全額で返金します。受験生の皆さんの重要な利益が保障できるようにJPTestKingは絶対信頼できるものです。

### Fortinet FCSS\_SASE\_AD-25 認定試験の出題範囲:

トピック	出題範囲
トピック 1	<ul style="list-style-type: none"><li>Analytics and Monitoring: This section of the exam measures the skills of Security Analysts and emphasizes the monitoring and reporting aspects of FortiSASE. Candidates are expected to configure dashboards, logging settings, and analyze reports for user traffic and security issues. Additionally, they must use FortiSASE logs to identify potential threats and provide insights into incidents or abnormal behavior. The focus is on leveraging analytics for operational visibility and strengthening the organization's security posture.</li></ul>

トピック 2	<ul style="list-style-type: none"> <li>• SASE Architecture and Components: This section of the exam measures the skills of Network Engineers and introduces the fundamentals of SASE within enterprise environments. Candidates are expected to understand the SASE architecture, identify FortiSASE components, and build deployment cases for real-world scenarios. The content emphasizes how SASE can be integrated into a hybrid network, showcasing secure design principles and the use of FortiSASE capabilities to support business and security objectives.</li> </ul>
トピック 3	<ul style="list-style-type: none"> <li>• SASE Deployment: This section of the exam measures the knowledge of Implementation Consultants and focuses on the practical aspects of deploying FortiSASE. Candidates will explore user onboarding methods, configuration of administration settings, and the application of security posture checks with compliance rules. The exam also includes key functions such as SIA, SSA, and SPA, alongside the design of security profiles that perform effective content inspection. By combining these tasks, learners demonstrate readiness to roll out secure and scalable deployments.</li> </ul>
トピック 4	<ul style="list-style-type: none"> <li>• Advanced FortiSASE Solutions: This section of the exam measures the expertise of Solution Architects and validates the ability to work with advanced FortiSASE features. It covers deployment of SD-WAN using FortiSASE, implementation of Zero Trust Network Access (ZTNA), and the overall role of FortiSASE in optimizing enterprise connectivity. The section highlights how these advanced solutions improve flexibility, enforce zero-trust principles, and extend security controls across distributed networks and cloud systems.</li> </ul>

## Fortinet FCSS - FortiSASE 25 Administrator 認定 FCSS\_SASE\_AD-25 試験問題 (Q14-Q19):

### 質問 # 14

Refer to the exhibits.

**Network diagram**

FortiClient 100.65.80.2/20

FortiSASE POP 10.11.11.10/24

FortiGate hub tunnel interface 10.11.11.1/24

Server 10.160.160.3/24

Zero Trust Tags FortiSASE-Compliant

**Private access policy on FortiSASE**

To hubs From hubs

+ Create Edit Delete Search

<input type="checkbox"/>	Name	Profile Group	Source	Destination	Action	User
<input checked="" type="checkbox"/>	Custom 4					
<input type="checkbox"/>	Non-Compliant-SPA	FortiSASE-Non-Compliant		All Private Access Traffic	Deny	All VPN Users
<input type="checkbox"/>	Allow-All Private Traffic	Default	FortiSASE-Compliant	All Private Access Traffic	Accept	All VPN Users

# BGP route information on FortiSASE

LEARNED BGP ROUTES (TO\_HUB/VANCOUVER - CANADA)

Prefix	Next Hop	Learned From
10.160.160.0/24	10.11.11.1	10.11.11.1
100.65.17.0/24	0.0.0.0	0.0.0.0
100.65.32.0/20	0.0.0.0	0.0.0.0
100.65.176.0/20	0.0.0.0	0.0.0.0
100.65.17.0/24	0.0.0.0	0.0.0.0
100.65.32.0/20	0.0.0.0	0.0.0.0
100.65.176.0/20	0.0.0.0	0.0.0.0

**Advertised routes on Hub**

```
# get router info bgp neighbors 10.11.11.10 advertised-routes
VRF: 0 BGP table version is 4, local router ID is 10.1.0.254
Status codes: s suppressed, d damped, h history, * valid, > best, i - internal
Origin codes: i - IGP, e - EGP, ? - incomplete
Network          Next Hop          Metric      LocPrf Weight RouteTag Path
*>i 10.12.11.1/32 10.11.11.13      100         0         0 i <-/1>
*>i 10.12.11.2/32 10.11.11.12      100         0         0 i <-/1>
*>i 10.12.11.4/32 10.11.11.11      100         0         0 i <-/1>
*>i 10.160.160.0/24 10.11.11.1       100 32768     0 i <-/1>
*>i 100.65.17.0/24 10.11.11.11      100         0         0 i <-/1>
*>i 100.65.18.0/24 10.11.11.13      100         0         0 i <-/1>
*>i 100.65.20.0/24 10.11.11.12      100         0         0 i <-/1>
*>i 100.65.32.0/20 10.11.11.11      100         0         0 i <-/1>
*>i 100.65.48.0/20 10.11.11.12      100         0         0 i <-/1>
*>i 100.65.128.0/20 10.11.11.12     100         0         0 i <-/1>
*>i 100.65.144.0/20 10.11.11.13     100         0         0 i <-/1>
*>i 100.65.160.0/20 10.11.11.13     100         0         0 i <-/1>
*>i 100.65.176.0/20 10.11.11.11     100         0         0 i <-/1>
```

A FortiSASE administrator has configured FortiSASE as a spoke to a FortiGate hub. The tunnel is up to the FortiGate hub. However, the remote FortiClient is not able to access the web server hosted behind the FortiGate hub. Based on the exhibits, what is the reason for the access failure?

- A. The hub is not advertising the required routes.
- B. The server subnet BGP route was not received on FortiSASE.
- C. A private access policy has denied the traffic because of failed compliance
- **D. The hub firewall policy does not include the FortiClient address range.**

正解: D

## 質問 # 15

Refer to the exhibits.

Managed Endpoints

Endpoint	ZTNA Tags (Detailed)	Management Connection	Software OS	FortiClient Version
Jumpbox	FortiSASE-Compliant	Online	Microsoft Windows 11 Professional Edition, 64-bit (build 26100)	7.2.8.1140
Windows-AD	FortiSASE-Compliant FortiSASE-Non-Compliant	Online	Microsoft Windows Server 2019 Datacenter Edition, 64-bit (build 17763)	7.2.6.1076

## ZTNA Tagging Rules



Name: FortiSASE\_Compliant

Enabled:

When the following rules match

+ Create Edit Delete

Type	Parameters	Matching Criteria
Windows		
OS Version	Windows 11 Windows Server 2019	At least one parameter must pass

Apply the following tag

Tag Name: FortiSASE\_Compliant

Name: FortiSASE-Non-Compliant

Enabled:

When the following rules match

+ Create Edit Delete

Type	Parameters	Matching Criteria
Windows		
AntiVirus	AV Software is installed and running	All parameters must pass

Apply the following tag

Tag Name: FortiSASE-Non-Compliant

### Secure Internet Access Policy

Name	Profile Group	Source	Destination	Action	User
System defined					
Custom					
Non-Compliant		FortiSASE-Non-Compliant	All Internet Traffic	Deny	All VPN Users
Web Traffic	SIA	FortiSASE-Compliant	All Internet Traffic	Accept	Remote_SIA_Users

User Group: Remote\_SIA\_Users  
Members: user1@fortinettraining.lab, user2@fortinettraining.lab

Jumpbox and Windows-AD are endpoints from the same remote location. Jumpbox can access the internet through FortiSASE, while Windows-AD can no longer access the internet.

Based on the information in the exhibits, which reason explains the outage on Windows-AD?

- A. The remote VPN user on Windows-AD no longer matches any VPN policy.
- B. Windows-AD is excluded from FortiSASE management.
- C. The device posture for Windows-AD has changed.
- D. The FortiClient version installed on Windows AD does not match the expected version on FortiSASE.

正解: C

解説:

The Windows-AD endpoint now has both "FortiSASE-Compliant" and "FortiSASE-Non-Compliant" tags due to failing the antivirus software check. As a result, the Secure Internet Access Policy matches the "Non-Compliant" rule, which is set to Deny, causing the device to lose internet access.

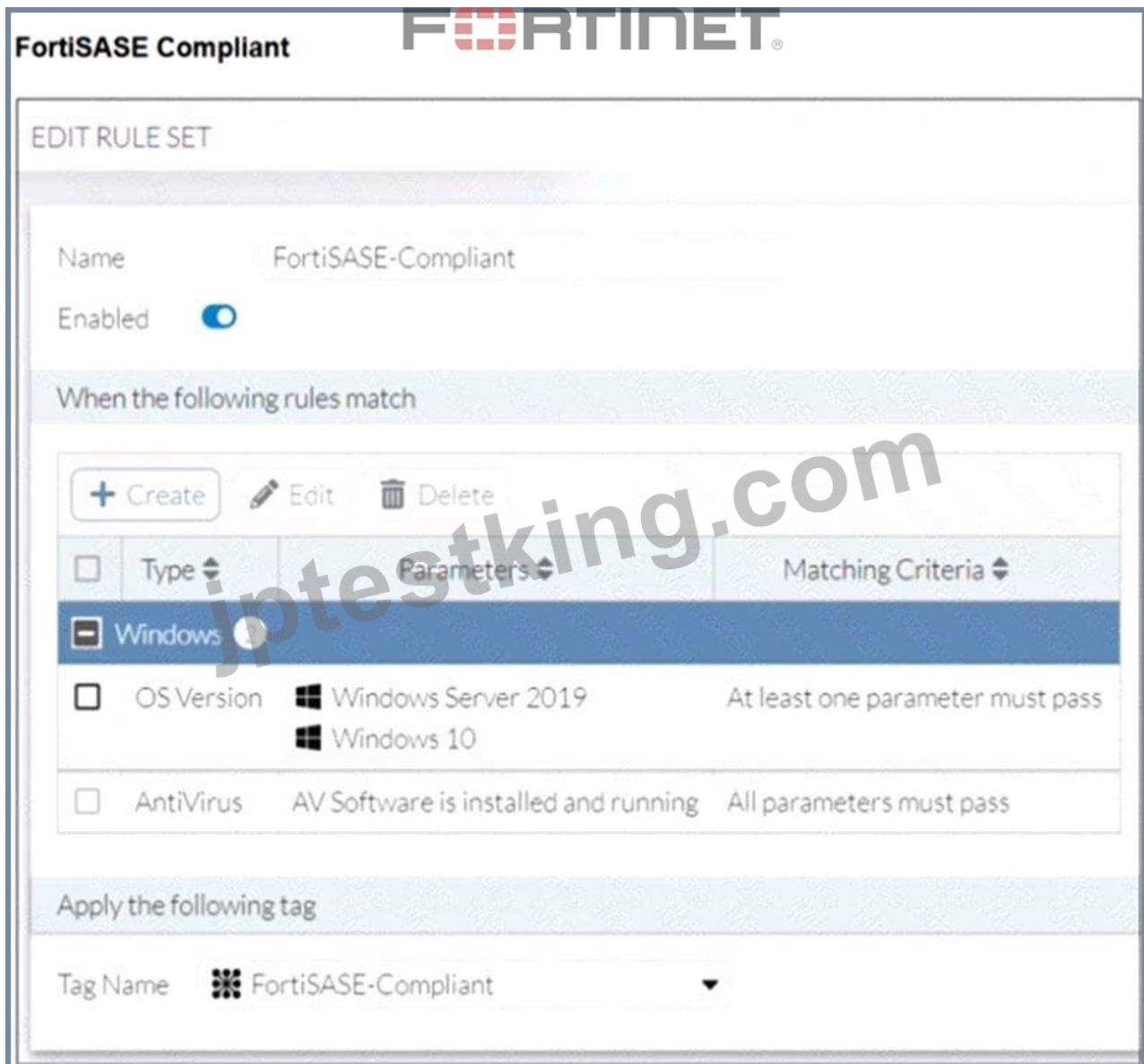
#### 質問 # 16

Refer to the exhibits.

The screenshot shows the configuration page for a FortiSASE Non-Compliant rule set. The rule is named "FortiSASE-Non-Compliant" and is enabled. It is triggered when the following rules match:

Type	Parameters	Matching Criteria
Windows		
AntiVirus	AV Software is installed and running	All parameters must pass

The "AntiVirus" rule is currently failing, indicated by a red "NOT" icon. The rule set is configured to apply the tag "FortiSASE-Non-Compliant".



Antivirus is installed on a Windows 10 endpoint, but the windows application firewall is stopping it from running. What will the endpoint security posture check be?

- A. FortiClient will tag the endpoint as FortiSASE-Non-Compliant.
- B. FortiClient will be unmanaged from FortiSASE due to failed compliance.
- C. FortiClient will prompt the user to enable antivirus.
- D. FortiClient will trigger network lockdown on the endpoint.

正解: A

解説:

Although the antivirus is installed, it is not running due to the Windows application firewall blocking it. According to the FortiSASE-Non-Compliant rule, antivirus software must be both installed and running. Since this condition fails, FortiClient assigns the FortiSASE-Non-Compliant tag to the endpoint.

質問 # 17

Which two deployment methods are used to connect a FortiExtender as a FortiSASE LAN extension? (Choose two.)

- A. Enable Control and Provisioning Wireless Access Points (CAPWAP) access on the FortiSASE portal.
- B. Configure an IPsec tunnel on FortiSASE to connect to FortiExtender.
- C. Enter the FortiSASE domain name in the FortiExtender GUI as a static discovery server
- D. Connect FortiExtender to FortiSASE using FortiZTP

正解: C、D

解説:

There are two deployment methods used to connect a FortiExtender as a FortiSASE LAN extension:

Connect FortiExtender to FortiSASE using FortiZTP:

FortiZero Touch Provisioning (FortiZTP) simplifies the deployment process by allowing FortiExtender to automatically connect and configure itself with FortiSASE.

This method requires minimal manual configuration, making it efficient for large-scale deployments.

Enter the FortiSASE domain name in the FortiExtender GUI as a static discovery server:

Manually configuring the FortiSASE domain name in the FortiExtender GUI allows the extender to discover and connect to the FortiSASE infrastructure.

This static discovery method ensures that FortiExtender can establish a connection with FortiSASE using the provided domain name.

FortiOS 7.2 Administration Guide: Details on FortiExtender deployment methods and configurations.

FortiSASE 23.2 Documentation: Explains how to connect and configure FortiExtender with FortiSASE using FortiZTP and static discovery.

### 質問 # 18

When accessing the FortiSASE portal for the first time, an administrator must select data center locations for which three FortiSASE components? (Choose three.)

- A. Logging
- B. Authentication
- C. SD-WAN hub
- D. Points of presence
- E. Endpoint management

正解: A、D、E

解説:

When accessing the FortiSASE portal for the first time, an administrator must select data center locations for the following FortiSASE components:

Endpoint Management:

The data center location for endpoint management ensures that endpoint data and policies are managed and stored within the chosen geographical region.

Points of Presence (PoPs):

Points of Presence (PoPs) are the locations where FortiSASE services are delivered to users. Selecting PoP locations ensures optimal performance and connectivity for users based on their geographical distribution.

Logging:

The data center location for logging determines where log data is stored and managed. This is crucial for compliance and regulatory requirements, as well as for efficient log analysis and reporting.

FortiOS 7.2 Administration Guide: Details on initial setup and configuration steps for FortiSASE.

FortiSASE 23.2 Documentation: Explains the importance of selecting data center locations for various FortiSASE components.

### 質問 # 19

.....

FCSS\_SASE\_AD-25学習ガイドは、99%以上の合格保証をJPTestKing提供します。そして、他のお客様と同じようにFCSS\_SASE\_AD-25試験に合格すると信じています。同時に、学習を続けたい場合は、FCSS\_SASE\_AD-25ガイドドキュメントが1年以内の無料アップデートと1年以上の割引のメリットを提供します。それまでの間、古い顧客として、他の対象テスト製品を購入するか、既存のFCSS\_SASE\_AD-25学習テストを更新し続けるかどうかにより多くのメリットをFCSS - FortiSASE 25 Administrator享受できます。

**FCSS\_SASE\_AD-25真実試験:** [https://www.jpctestking.com/FCSS\\_SASE\\_AD-25-exam.html](https://www.jpctestking.com/FCSS_SASE_AD-25-exam.html)

- 最新のFCSS\_SASE\_AD-25認証資格 - 合格スムーズFCSS\_SASE\_AD-25真実試験 | 便利なFCSS\_SASE\_AD-25対応問題集  最新▶ FCSS\_SASE\_AD-25 ◀問題集ファイルは  [www.xhs1991.com](http://www.xhs1991.com) にて検索  
FCSS\_SASE\_AD-25過去問無料
- FCSS\_SASE\_AD-25試験番号  FCSS\_SASE\_AD-25復習対策  FCSS\_SASE\_AD-25試験番号  ✨  
[www.goshiken.com](http://www.goshiken.com)  ✨ を開き、《FCSS\_SASE\_AD-25》を入力して、無料でダウンロードしてください

#### FCSS\_SASE\_AD-25受験資格

- 最新FCSS\_SASE\_AD-25 | 完璧なFCSS\_SASE\_AD-25認証資格試験 | 試験の準備方法FCSS - FortiSASE 25 Administrator 真実試験 □ 今すぐ 《 [www.shikenpass.com](http://www.shikenpass.com) 》で「FCSS\_SASE\_AD-25」を検索して、無料でダウンロードしてくださいFCSS\_SASE\_AD-25一発合格
- FCSS\_SASE\_AD-25復習対策 □ FCSS\_SASE\_AD-25過去問無料 □ FCSS\_SASE\_AD-25トレーニングサンプル □ 今すぐ[ [www.goshiken.com](http://www.goshiken.com) ]を開き、➡FCSS\_SASE\_AD-25 □□□を検索して無料でダウンロードしてくださいFCSS\_SASE\_AD-25日本語版受験参考書
- 真実的なFCSS\_SASE\_AD-25認証資格試験-試験の準備方法-便利なFCSS\_SASE\_AD-25真実試験 □ 時間限定無料で使える ➡ FCSS\_SASE\_AD-25 □の試験問題は □ [www.jpshiken.com](http://www.jpshiken.com) □サイトで検索FCSS\_SASE\_AD-25過去問題
- FCSS\_SASE\_AD-25日本語版 ↗ FCSS\_SASE\_AD-25トレーニングサンプル □ FCSS\_SASE\_AD-25日本語版と英語版 □▷ [www.goshiken.com](http://www.goshiken.com) ◁にて限定無料の【FCSS\_SASE\_AD-25】問題集をダウンロードせよFCSS\_SASE\_AD-25日本語版
- FCSS\_SASE\_AD-25過去問題 □ FCSS\_SASE\_AD-25日本語版 □ FCSS\_SASE\_AD-25日本語版と英語版 □ □最新➤ FCSS\_SASE\_AD-25 □問題集ファイルは“[www.mogixam.com](http://www.mogixam.com)”にて検索FCSS\_SASE\_AD-25日本語版
- 真実的なFCSS\_SASE\_AD-25認証資格試験-試験の準備方法-便利なFCSS\_SASE\_AD-25真実試験 □ ➡ [www.goshiken.com](http://www.goshiken.com) □を開き、（FCSS\_SASE\_AD-25）を入力して、無料でダウンロードしてくださいFCSS\_SASE\_AD-25参考書内容
- FCSS\_SASE\_AD-25トレーニングサンプル □ FCSS\_SASE\_AD-25受験資格 □ FCSS\_SASE\_AD-25認定資格試験 □ サイト➡ [www.it-passports.com](http://www.it-passports.com) □で □ FCSS\_SASE\_AD-25 □問題集をダウンロードFCSS\_SASE\_AD-25問題集無料
- FCSS\_SASE\_AD-25予想試験 □ FCSS\_SASE\_AD-25日本語版と英語版 □ FCSS\_SASE\_AD-25試験資料 \* 今すぐ▶ [www.goshiken.com](http://www.goshiken.com) ◀で □ FCSS\_SASE\_AD-25 □を検索して、無料でダウンロードしてくださいFCSS\_SASE\_AD-25受験資格
- 正確的なFortinet FCSS\_SASE\_AD-25認証資格 - 合格スムーズFCSS\_SASE\_AD-25真実試験 | 素晴らしいFCSS\_SASE\_AD-25対応問題集 □ ウェブサイト“[www.jpctestking.com](http://www.jpctestking.com)”を開き、“FCSS\_SASE\_AD-25”を検索して無料でダウンロードしてくださいFCSS\_SASE\_AD-25学習範囲
- [www.stes.tyc.edu.tw](http://www.stes.tyc.edu.tw), [www.stes.tyc.edu.tw](http://www.stes.tyc.edu.tw), [monicapkxb838468.blogspot.com](http://monicapkxb838468.blogspot.com), [socialaffluent.com](http://socialaffluent.com), [tamzincfxs956436.blogozz.com](http://tamzincfxs956436.blogozz.com), [seobookmarkpro.com](http://seobookmarkpro.com), [bookmarkprobe.com](http://bookmarkprobe.com), [safiyaggrf811006.wikinstructions.com](http://safiyaggrf811006.wikinstructions.com), [turill.com](http://turill.com), [bookmarkport.com](http://bookmarkport.com), [Disposable vapes](http://Disposable vapes)

無料でクラウドストレージから最新のJPTestKing FCSS\_SASE\_AD-25 PDFダンプをダウンロードする：<https://drive.google.com/open?id=1Lts8WAugPuGsuI3gtpFkWpUI8cRh73m>