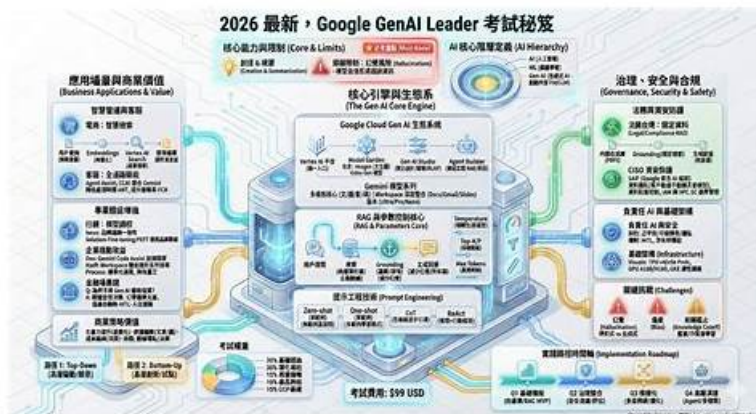


Google Generative-AI-Leader 證照資訊 & Generative-AI-Leader 熱門題庫



從Google Drive中免費下載最新的KaoGuTi Generative-AI-Leader PDF版考試題庫：<https://drive.google.com/open?id=1742DhDUxuXcpcQYqHV6AXQjoKRllWsAZ>

KaoGuTi 能夠消除考生對考試失敗的憂慮；讓考生安心輕鬆通過 Generative-AI-Leader 考試，把考生通過考試當作自己的事情來對待，這是我們考題網對廣大考生最貼心的服務。考生需要是多做我們的 Google Generative-AI-Leader 考古題，將特別需要記憶或比較的題型做標註，這不僅能檢測出自己理解的多，也能在 Generative-AI-Leader 考試前作最快速的瀏覽，增加內容的熟悉度，有效提高學習效率。

Google Generative-AI-Leader 考試大綱：

主題	簡介
主題 1	<ul style="list-style-type: none"> • Fundamentals of Generative AI: This section of the exam measures the skills of AI Engineers and focuses on the foundational concepts of generative AI. It covers the basics of artificial intelligence, natural language processing, machine learning approaches, and the role of foundation models. Candidates are expected to understand the machine learning lifecycle, data quality, and the use of structured and unstructured data. The section also evaluates knowledge of business use cases such as text, image, code, and video generation, along with the ability to identify when and how to select the right model for specific organizational needs.
主題 2	<ul style="list-style-type: none"> • Business Strategies for a Successful Generative AI Solution: This section of the exam measures the skills of Cloud Architects and evaluates the ability to design, implement, and manage enterprise-level generative AI solutions. It covers the decision-making process for selecting the right solution, integrating AI into an organization, and measuring business impact. A strong emphasis is placed on secure AI practices, highlighting Google’s Secure AI Framework and cloud security tools, as well as the importance of responsible AI, including fairness, transparency, privacy, and accountability.
主題 3	<ul style="list-style-type: none"> • Google Cloud’s Generative AI Offerings: This section of the exam measures the skills of Cloud Architects and highlights Google Cloud’s strengths in generative AI. It emphasizes Google’s AI-first approach, enterprise-ready platform, and open ecosystem. Candidates will learn about Google’s AI infrastructure, including TPUs, GPUs, and data centers, and how the platform provides secure, scalable, and privacy-conscious solutions. The section also explores prebuilt AI tools such as Gemini, Workspace integrations, and AgentSpace, while demonstrating how these offerings enhance customer experience and empower developers to build with Vertex AI, RAG capabilities, and agent tooling.
主題 4	<ul style="list-style-type: none"> • Techniques to Improve Generative AI Model Output: This section of the exam measures the skills of AI Engineers and focuses on improving model reliability and performance. It introduces best practices to address common foundation model limitations such as bias, hallucinations, and data dependency, using methods like retrieval-augmented generation, prompt engineering, and human-in-the-loop systems. Candidates are also tested on different prompting techniques, grounding approaches, and the ability to configure model settings such as temperature and token count to optimize results.

選擇Generative-AI-Leader證照資訊 - 跟Google Cloud Certified - Generative AI Leader Exam考試難題說再見

KaoGuTi提供的產品品質是非常好的，而且更新的速度也是最快的。如果你購買了我們提供的Google Generative-AI-Leader認證考試相關的培訓資料，你是可以成功地通過Google Generative-AI-Leader認證考試。

最新的 Google Cloud Certified Generative-AI-Leader 免費考試真題 (Q86-Q91):

問題 #86

A sales manager wants to responsibly use generative AI (gen AI) to increase efficiency with their existing tasks. They want to allow the sales team to focus on building customer relationships and closing deals. How should the sales team use gen AI?

- A. To analyze customer interactions on social media and automatically generate sales pitches tailored to their public profiles.
- B. To automate creative content like blog posts and social media updates to attract new leads.
- C. To replace the sales team's CRM system with a more intuitive and user-friendly interface.
- **D. To draft emails and provide real-time insights about customer needs.**

答案: D

解題說明:

The strategic goal is to boost sales efficiency by shifting the team's focus to high-value activities (relationships and closing deals) by automating repetitive administrative tasks.

Option C directly addresses this goal by leveraging Gen AI's core capabilities for text generation and summarization/analysis:

Drafting emails automates a major time sink for sales reps (a common, repetitive task).

Providing real-time insights automates the labor-intensive research and manual data analysis required to understand customer needs, giving the rep instant, actionable context.

Options A and D are less direct solutions for improving sales efficiency: Option A is an expensive, high-risk platform replacement, not an efficiency use case. Option D describes marketing tasks, which, while related, are not the primary, day-to-day tasks that sales reps perform to clear their schedules for relationship building. Therefore, Gen AI's most effective role in sales is as a productivity assistant for drafting and quick research.

(Reference: Google Cloud documentation on sales enablement use cases emphasizes that Gen AI's role is to automate administrative and time-consuming tasks like drafting outreach messages and synthesizing customer information to enhance seller productivity, allowing them to focus on revenue-generating activities.)

問題 #87

A company is developing a generative AI application to analyze customer feedback collected through online surveys. Stakeholders are concerned about potential privacy risks associated with this data, as the feedback contains personally identifiable information (PII). They need to mitigate these risks before using the data to train the AI model. What action should the company prioritize?

- A. Focusing on collecting only quantitative feedback data in future surveys.
- B. Implementing strong access controls to limit which teams can view the raw survey data.
- **C. Applying data anonymization techniques to remove or obscure sensitive data.**
- D. Ensuring that the AI model is trained on a large and diverse dataset.

答案: C

解題說明:

The problem is the existence of Personally Identifiable Information (PII) within the customer feedback data, which introduces privacy risks for the development and training of the generative AI model. The goal is to mitigate these risks before using the data to train the AI model.

According to Google's Responsible AI and data handling best practices, when sensitive data like PII is present in a dataset intended for model training, the most critical step to prioritize is data minimization and privacy protection at the source. This is often achieved through anonymization or de-identification.

Applying data anonymization techniques (D) directly addresses the risk by removing or obscuring the sensitive data elements. This prevents the PII from being embedded into the model's parameters during training, thereby eliminating the risk of data leakage or

privacy violations in the AI application's outputs. This is a crucial early step in the ML lifecycle for datasets containing sensitive information.

問題 #88

A user asks a generative AI model about the scientific accuracy of a popular science fiction movie. The model confidently states that humans can indeed travel faster than light, referencing specific but entirely fictional theories and providing made-up explanations of how this is achieved according to the movie's "established science." The model presents this information as factual, without indicating that it originates from a fictional work. What type of model limitation is this?

- A. Data dependency
- B. Bias
- C. Hallucination
- D. Knowledge cutoff

答案： C

解題說明：

The limitation described is the AI model generating a false or misleading response (humans traveling faster than light is scientifically impossible/unproven) and presenting it as fact (confidently stating a fictional theory is real) without the ability to indicate its uncertainty or the source's fictional nature. This is the definition of a Hallucination in generative AI. AI Hallucinations occur when a Large Language Model (LLM) generates outputs that are factually incorrect, irrelevant, or nonsensical, despite being linguistically fluent and seemingly plausible. They arise because the model is designed to predict the most statistically probable next word or token based on its training data, even when it lacks information or when its training data contains a mixture of fact and fiction. The model is overconfident in its generated response, a behavior that diminishes user trust and reliability, especially in applications where factual accuracy is critical.

問題 #89

A large e-commerce company with a vast and frequently updated product catalog finds that customers struggle to find products on their website, and support agents spend too much time finding detailed product information. The company wants to improve search accuracy and efficiency for both customers and support.

What Google Cloud solution should they use?

- A. Vertex AI Model Garden
- B. Vertex AI Natural Language API
- C. Vertex AI Conversation
- D. Pre-built RAG with Vertex AI Search

答案： D

解題說明：

This scenario strongly points to the need for accurate and up-to-date information retrieval from a product catalog. Pre-built RAG (Retrieval-Augmented Generation) combined with Vertex AI Search is the ideal solution. Vertex AI Search can index the product catalog, and RAG can then use this indexed data to ground the responses of a generative AI model, ensuring that both customer searches and support agent queries retrieve precise and relevant product information.

問題 #90

A company wants a generative AI platform that provides the infrastructure, tools, and pre-trained models needed to build, deploy, and manage its generative AI solutions. Which Google Cloud offering should the company use?

- A. BigQuery
- B. Google Kubernetes Engine (GKE)
- C. Google Cloud Storage
- D. Vertex AI

答案： D

解題說明：

Vertex AI is Google Cloud's unified machine learning platform that provides end-to-end support for the ML lifecycle, including access to pre-trained models (foundation models), tools for fine-tuning, deployment, and management of generative AI solutions. BigQuery is a data warehouse, GKE is for container orchestration, and Cloud Storage is for object storage; while they might be components used with Vertex AI, they are not the comprehensive generative AI platform themselves.

問題 #91

.....

Generative-AI-Leader 考試是一個Google 的認證考試，通過了一些Google認證考試的IT人士是受很多IT行業歡迎的。所以越來越多的人參加Generative-AI-Leader認證考試，但是通過Generative-AI-Leader認證考試並不是很簡單的。如果你沒有參加一些專門的相關培訓是需要花很多時間和精力來為考試做準備的。現在KaoGuTi可以幫你節約省很多寶貴的時間和精力。

Generative-AI-Leader熱門題庫: https://www.kaoguti.com/Generative-AI-Leader_exam-pdf.html

- Generative-AI-Leader最新題庫資源 □ Generative-AI-Leader資訊 □ Generative-AI-Leader PDF □ ✓
www.newdumpspdf.com □ ✓ □ 網站搜索 □ Generative-AI-Leader □ 並免費下載Generative-AI-Leader最新題庫資源
- 最新的Google Generative-AI-Leader證照資訊是行業領先材料&權威的Generative-AI-Leader: Google Cloud Certified - Generative AI Leader Exam □ 進入 □ www.newdumpspdf.com □ 搜尋 { Generative-AI-Leader } 免費下載Generative-AI-Leader考古題推薦
- 最受歡迎的Generative-AI-Leader證照資訊，覆蓋大量的Google認證Generative-AI-Leader考試知識點 □ ▶ www.newdumpspdf.com ◀ 上的【Generative-AI-Leader】免費下載只需搜尋Generative-AI-Leader認證指南
- 熱門的Generative-AI-Leader證照資訊和資格考試領先提供者和實踐中的Generative-AI-Leader熱門題庫 □ { www.newdumpspdf.com } 上的 { Generative-AI-Leader } 免費下載只需搜尋Generative-AI-Leader考試重點
- Generative-AI-Leader資訊 □ Generative-AI-Leader認證資料 □ Generative-AI-Leader最新題庫資源 □ ▶ www.pdfexamdumps.com □ 網站搜索【Generative-AI-Leader】並免費下載Generative-AI-Leader試題
- 最新的Google Generative-AI-Leader證照資訊是行業領先材料&權威的Generative-AI-Leader: Google Cloud Certified - Generative AI Leader Exam □ 在《www.newdumpspdf.com》網站下載免費 ➡ Generative-AI-Leader □ □ □ 題庫收集Generative-AI-Leader考試重點
- 熱門的Generative-AI-Leader證照資訊和資格考試領先提供者和實踐中的Generative-AI-Leader熱門題庫 □ 到 ➡ www.newdumpspdf.com □ 搜索《Generative-AI-Leader》輕鬆取得免費下載Generative-AI-Leader考試備考經驗
- Generative-AI-Leader認證題庫 □ 最新Generative-AI-Leader題庫 □ Generative-AI-Leader認證題庫 □ 在（www.newdumpspdf.com）上搜索“Generative-AI-Leader”並獲取免費下載Generative-AI-Leader最新題庫資源
- Generative-AI-Leader認證資料 □ Generative-AI-Leader考試重點 □ Generative-AI-Leader題庫資料 □ 到 { www.kaoguti.com } 搜索（Generative-AI-Leader）輕鬆取得免費下載Generative-AI-Leader認證
- Generative-AI-Leader PDF □ Generative-AI-Leader參考資料 □ Generative-AI-Leader考試重點 □ 透過 > www.newdumpspdf.com ◀ 輕鬆獲取 { Generative-AI-Leader } 免費下載Generative-AI-Leader認證
- 最實用的Generative-AI-Leader認證考古試題及參考答案 □ 到 ➡ www.newdumpspdf.com □ 搜索 □ Generative-AI-Leader □ 輕鬆取得免費下載Generative-AI-Leader PDF
- www.yuliancaishang.com, sociallawy.com, bookmarkfame.com, emilialyz533410.theideasblog.com, natural-bookmark.com, zaynabugdu683401.wikiap.com, caoimhensyt557998.livebloggs.com, pennybnxn006702.bloggactivo.com, reganaiaaw840983.verybigblog.com, extrabookmarking.com, Disposable vapes

順便提一下，可以從雲存儲中下載KaoGuTi Generative-AI-Leader考試題庫的完整版：<https://drive.google.com/open?id=1742DhDUxuXcpcQYqHV6AXQjoKRllWsAZ>