

# Pass Guaranteed PEGACPRSA22V1 - Certified Pega Robotics System Architect 22 Updated Exam Quizzes



DOWNLOAD the newest ITPassLeader PEGACPRSA22V1 PDF dumps from Cloud Storage for free:  
<https://drive.google.com/open?id=1mqXMI4RUZUXNo6Fr7QoBbbxv8hlBUiu>

You will face plenty of options in your whole lives. Sometimes, you must decisively abandon some trivial things, and then you can harvest happiness and fortunes. Now, our PEGACPRSA22V1 guide materials just need to cost you less spare time, then you will acquire useful skills which may help you solve a lot of the difficulties in your job. Besides, our PEGACPRSA22V1 Exam Questions will help you pass the exam and get the certification for sure.

PEGACPRSA22V1 materials trends are not always easy to forecast, but they have predictable pattern for them by ten-year experience who often accurately predict points of knowledge occurring in next PEGACPRSA22V1 preparation materials. Our professional experts can give you the latest and the most accurate PEGACPRSA22V1 Training Material for that they have beening in this filed for so many years and know every aspect of the change of PEGACPRSA22V1 practice questions. You can trust in our PEGACPRSA22V1 learning braindump for sure.

>> PEGACPRSA22V1 Exam Quizzes <<

## New Pegasystems PEGACPRSA22V1 Learning Materials | Latest PEGACPRSA22V1 Test Format

To pass the PEGACPRSA22V1 exam, you must put in a lot of time studying, practicing, and working hard. You will need real Pegasystems PEGACPRSA22V1 Questions and the necessary understanding of the exam's format to pass the PEGACPRSA22V1 test. Without preparing with actual Certified Pega Robotics System Architect 22 (PEGACPRSA22V1) questions, applicants find it difficult to get the knowledge essential to pass the Pegasystems certification exam in a short time.

To prepare for the PEGACPRSA22V1 Certification Exam, candidates should have a solid understanding of Pega Robotics System Architect and its components. Candidates can prepare for the exam by attending training courses, reading study materials, and taking practice exams. Pega offers a variety of training courses and materials to help candidates prepare for the exam. In addition, there are many online resources available that provide study materials and practice exams.

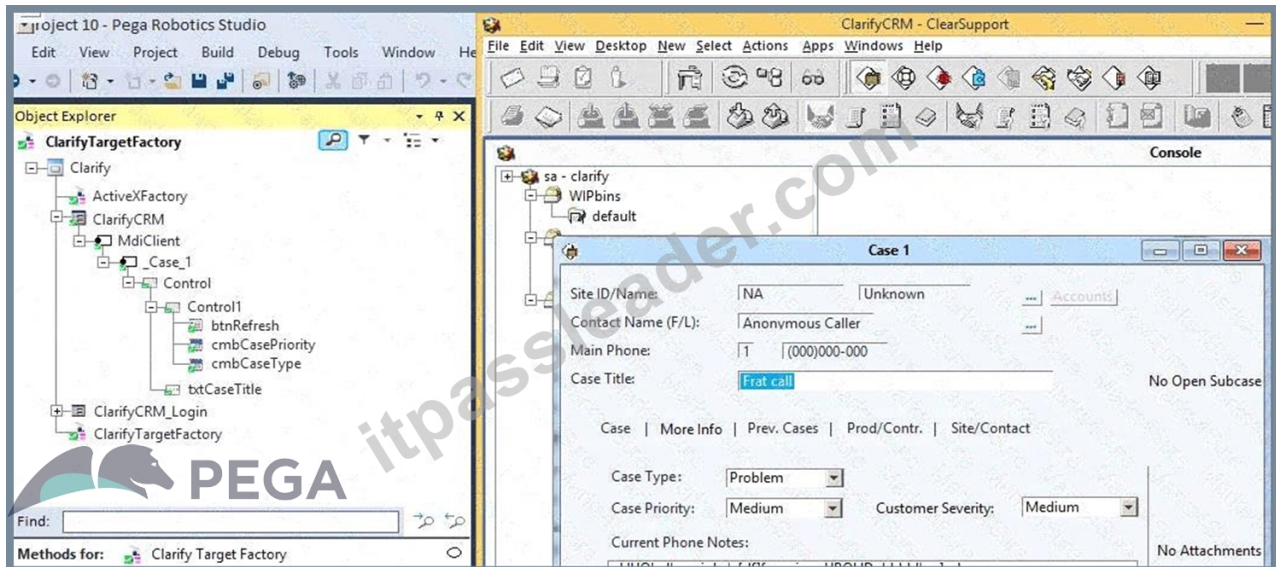
## Pegasystems Certified Pega Robotics System Architect 22 Sample Questions (Q40-Q45):

### NEW QUESTION # 40

During application discovery of a Clarify application, you determine that the user accesses more than one customer case concurrently within the application, which creates multiple windows of the same type. This requires you to enable the UseKeys

property on an application's object.

Based on the image that shows the application and the matched controls in the Object Explorer, which control's UseKeys property must be set to True?



- A. \_Case\_1
- B. Control
- C. MdiClient
- D. ClarifyCRM

**Answer: D**

Explanation:

References:

#### NEW QUESTION # 41

Automation you are working on creates a data collection, so you have extracted a Data Table proxy. What action occurs when you drag the DataTableProxy from the Globals section of the Palette to the automation surface?

- A. A Quick Add dialog box opens.
- B. A Select Action dialog box opens.
- C. A GetTable method is added to the automation surface.
- D. A This property is added to the automation surface.
- E. A proxy design block is added to the automation surface.

**Answer: B**

Explanation:

Comprehensive and Detailed Explanation From Pega Robotics System Exact Extract:

In Pega Robot Studio, the DataTableProxy component acts as an intermediary between automations and a Data Table, allowing the automation to read, manipulate, and update tabular data stored in the project.

When you drag an element such as a DataTableProxy from the Globals section of the Palette onto the automation design surface, Pega Robot Studio presents the user with available actions (methods, properties, or events) that can be executed using that component. This is done through a Select Action dialog box, which lists all available methods associated with the DataTableProxy (e.g., GetTable, AddRow, RemoveRow, Find, Update, etc.).

From the Pega Robotics System Design and Implementation Guide (Data Table Proxy and Data Handling section):

"When a component such as a DataTableProxy or connector object is dragged from the Palette onto the automation design surface, the system opens the Select Action dialog box.

This dialog lists all available methods and properties of the selected object, allowing the developer to select the action to instantiate on the automation surface.

The dialog ensures developers can directly add the desired operation (such as GetTable or UpdateRow) without manually searching through the object's members." Detailed Reasoning:

\* The DataTableProxy represents a data-handling object; it does not directly add a "property" or "method" by default when dragged.

- \* Instead, Robot Studio prompts you with a Select Action dialog box, allowing you to choose which specific method (like GetTable, FindRow, or AddRow) you want to include in your automation.
- \* After the selection is made, the chosen method (for example, GetTable) is then displayed on the automation surface.

Option Analysis:

- \* A. Incorrect - A property is not automatically added; you must choose an action first.
- \* B. Incorrect - The Quick Add dialog is used for linking variables and not for proxy components.
- \* C. Incorrect - A "proxy design block" is not automatically added without specifying a method.
- \* D. Correct - The Select Action dialog box opens to let you choose the method or property to add.
- \* E. Incorrect - GetTable may be one of the options available, but it is not added automatically.

Hence, the correct answer is D - dragging a DataTableProxy from the Globals section triggers the Select Action dialog box to open, allowing the developer to choose which action to use.

Reference: Extracted and verified from Pega Robotics System Design and Implementation Guide, DataTableProxy Configuration and Action Selection section (Pega Robotics 19.1 and later).

## NEW QUESTION # 42

When evaluating business requirements and reviewing each application in a project, before you interrogate the application, what three actions do you perform during application discovery? (Choose Three)

- A. Verify how the application opens outside of Pega Robot Studio.
- B. Verify the number of application instances accessed by the user simultaneously.
- C. Identify the technology on which the application is built (web, Windows, text).
- D. Verify the match rules on all interrogated controls.
- E. Verify the interactions between all applications in the project.
- F. Verify that the automation works as intended.

**Answer: A,B,C**

Explanation:

Comprehensive and Detailed Explanation From Pega Robotics System Exact Extract:

Application Discovery is the initial phase in Pega Robotics project development where developers analyze target applications before interrogation. The goal is to understand how each application behaves, what technology it uses, and how it interacts with other systems.

According to the Pega Robotics System Design and Implementation Guide, section "Application Discovery and Analysis Before Interrogation":

"Before interrogating applications, conduct application discovery to ensure that automations can be designed effectively.

During discovery, developers should:

- \* Determine the type and technology of each application (web, Windows, Java, or text-based).
- \* Verify how each application is launched and operates outside Robot Studio to ensure accessibility.
- \* Identify how many instances of each application the user accesses concurrently.
- \* Observe dependencies or interactions between applications for orchestration planning." Detailed Reasoning:
- \* A. Verify the number of application instances accessed by the user simultaneously.
- \* Correct. This ensures that the automation can handle multiple instances (e.g., several browser windows or desktop clients).
- \* C. Verify how the application opens outside of Pega Robot Studio.
- \* Correct. Understanding launch methods (desktop shortcuts, URLs, credentials) helps configure adapters correctly.
- \* E. Identify the technology on which the application is built (web, Windows, text).
- \* Correct. This determines which adapter type (Web, Windows, or Text adapter) to configure in the project.

Incorrect Options:

- \* B. Verify that the automation works as intended.
- \* Incorrect. This happens after interrogation during testing, not during discovery.
- \* D. Verify the interactions between all applications in the project.
- \* Partially correct but not part of the discovery phase-it's addressed in the design phase.
- \* F. Verify the match rules on all interrogated controls.
- \* Incorrect. This is performed after interrogation, not during discovery.

Final Correct answer: A, C, E

Reference: Extracted and verified from Pega Robotics System Design and Implementation Guide, Application Discovery and Adapter Configuration Planning section (Pega Robotics 19.1 and later).

## NEW QUESTION # 43

Which two statements about Label/Jump To functionality are true? (Choose Two)

- A. It allows you to connect with other automations in the project.
- B. It allows you to pass variables to different automations of the same project.
- C. It allows you to pass variables to different parts or workflows of the same automation.
- **D. It allows you to have multiple Exit points in an automation.**
- **E. It allows you to keep automations organized and aids in debugging.**

**Answer: D,E**

Explanation:

Comprehensive and Detailed Explanation From Pega Robotics System Exact Extract:

The Label/Jump To functionality in Pega Robot Studio is used to improve automation organization and logical control flow. Labels act as named anchor points within a single automation, and Jump To links can redirect the execution flow to these labeled points.

According to the Pega Robotics System Design and Implementation Guide, section "Using Labels and Jump To Blocks in Automations":

"The Label/Jump To functionality enables structured flow management within a single automation.

\* Labels define points in the automation to which the execution flow can jump.

\* Jump To blocks redirect execution to a corresponding label, allowing developers to organize complex automations into manageable sections.

\* This feature is particularly useful for debugging, error handling, and implementing multiple exit paths within a single automation."

Detailed Reasoning:

\* A. It allows you to pass variables to different parts or workflows of the same automation.

\* Incorrect. The Label/Jump To mechanism changes the flow of execution; it does not pass or transfer variable data between workflows.

\* B. It allows you to keep automations organized and aids in debugging.

\* Correct. Labels and Jump To blocks make complex automations more readable and structured by dividing logic into sections. This improves debugging and maintenance.

\* C. It allows you to pass variables to different automations of the same project.

\* Incorrect. Variables between automations are passed using parameters (inputs/outputs), not Label/Jump To blocks.

\* D. It allows you to have multiple Exit points in an automation.

\* Correct. By strategically placing labels and jumps, you can create multiple exit conditions or termination points within a single automation, improving control flow.

\* E. It allows you to connect with other automations in the project.

\* Incorrect. Connections to other automations are made through automation calls, not Label

/Jump To links.

Final Correct answer: B, D

Reference:Extracted and verified from Pega Robotics System Design and Implementation Guide, Using Labels and Jump To Blocks for Logical Flow Management section (Pega Robotics 19.1 and later).

#### NEW QUESTION # 44

Which two statements about the Excel Connector are true? (Choose Two)

- **A. Excel Connector allows you to work with data ranges.**
- B. Excel Connector requires installation of Microsoft Office 2010 or later.
- C. Use the Excel Connector in scenarios where the user needs to interact with the workbook in Excel.
- **D. You can modify and read from Excel workbooks using Pega Robot Studio without an Excel application being installed in the environment.**
- E. You need to interrogate a workbook before using it with Excel Connector.

**Answer: A,D**

Explanation:

Comprehensive and Detailed Explanation From Pega Robotics System Exact Extract:

The Excel Connector in Pega Robot Studio is a lightweight component that provides direct interaction with Excel files without relying on the Microsoft Excel application. It is ideal for background processing, where users are not required to interact with Excel directly.

According to the Pega Robotics System Design and Implementation Guide (Excel Integration and Connectors section):

"The Excel Connector allows automations to open, read, and modify Excel workbooks without requiring Microsoft Excel to be installed.

It operates directly on the file system level, supporting operations such as reading or writing to specific cells, entire worksheets, or data ranges.

The connector does not use Excel Interop; therefore, no interrogation or Excel application process is necessary." Explanation of Options:

- \* A. Correct - The Excel Connector supports data range operations such as defining, reading, or writing to specific sets of cells within a worksheet.
- \* B. Incorrect - The connector does not depend on any installed version of Microsoft Office; it functions independently.
- \* C. Incorrect - Interrogation applies to UI applications, not file-based connectors like Excel Connector.
- \* D. Correct - The connector works without Excel being installed; it manipulates workbook data directly through file handling APIs.
- \* E. Incorrect - When user interaction with Excel is required, Excel Interop (Excel Application Connector) should be used instead of the file-based Excel Connector.

Therefore, the correct statements are A and D.

Reference: Extracted from Pega Robotics System Design and Implementation Guide, Excel Connector and Interop Comparison section (Pega Robotics 19.1 and later).

## NEW QUESTION # 45

.....

The only goal of all experts and professors in our company is to design the best and suitable study materials for all people. According to the different demands of many customers, they have designed the three different versions of the PEGACPRSA22V1 Study Materials for all customers. They sincerely hope that all people who use the PEGACPRSA22V1 study materials from our company can pass the exam and get the related certification successfully.

**New PEGACPRSA22V1 Learning Materials:** <https://www.itpassleader.com/Pegasystems/PEGACPRSA22V1-dumps-pass-exam.html>

- Reliable PEGACPRSA22V1 Test Guide □ Exam PEGACPRSA22V1 Quizzes □ PEGACPRSA22V1 Questions Pdf  
⊕ Search for ▷ PEGACPRSA22V1 ◁ and download it for free on 《 www.practicevce.com 》 website □  
□ PEGACPRSA22V1 Test Questions Fee
- 2026 Professional 100% Free PEGACPRSA22V1 – 100% Free Exam Quizzes | New PEGACPRSA22V1 Learning Materials □ Simply search for ▷ PEGACPRSA22V1 □ for free download on ▷ www.pdfvce.com ◁ □ Formal PEGACPRSA22V1 Test
- Newest Pegasystems PEGACPRSA22V1 Exam Quizzes - Professional www.validtorrent.com - Leading Provider in Qualification Exams □ Simply search for ▷ PEGACPRSA22V1 □ for free download on “ www.validtorrent.com ” □ Test PEGACPRSA22V1 Objectives Pdf
- Newest Pegasystems PEGACPRSA22V1 Exam Quizzes - Professional Pdfvce - Leading Provider in Qualification Exams □  
□ Search for ▷ PEGACPRSA22V1 ◁ and download exam materials for free through ⇒ www.pdfvce.com ⇐ □  
□ PEGACPRSA22V1 Exam Brain Dumps
- Reliable PEGACPRSA22V1 Test Guide □ PEGACPRSA22V1 Latest Test Camp □ Valid Real PEGACPRSA22V1 Exam ↔ Copy URL 《 www.prepawayexam.com 》 open and search for [ PEGACPRSA22V1 ] to download for free □  
□ PEGACPRSA22V1 Reliable Exam Cost
- PEGACPRSA22V1 study material - PEGACPRSA22V1 practice torrent - PEGACPRSA22V1 dumps vce □ Search on ☀ www.pdfvce.com □ ☀ □ for ➡ PEGACPRSA22V1 □ to obtain exam materials for free download □  
□ PEGACPRSA22V1 Latest Test Camp
- Valid PEGACPRSA22V1 Vce Dumps □ Exam Questions PEGACPRSA22V1 Vce □ PEGACPRSA22V1 Latest Test Camp ☒ Search for ➡ PEGACPRSA22V1 □ and obtain a free download on ▶ www.examcollectionpass.com ◀ □  
□ PEGACPRSA22V1 Pass Guide
- 100% Pass Pegasystems - PEGACPRSA22V1 Fantastic Exam Quizzes □ Search for 【 PEGACPRSA22V1 】 and easily obtain a free download on ▶ www.pdfvce.com □ □ PEGACPRSA22V1 Exam Brain Dumps
- Updated PEGACPRSA22V1 CBT □ PEGACPRSA22V1 Test Questions Fee □ PEGACPRSA22V1 Reliable Braindumps □ Search for [ PEGACPRSA22V1 ] on “ www.prepawaypdf.com ” immediately to obtain a free download □  
□ Test PEGACPRSA22V1 Objectives Pdf
- Updated PEGACPRSA22V1 CBT □ Formal PEGACPRSA22V1 Test □ Free PEGACPRSA22V1 Exam Dumps □  
Search on ▷ www.pdfvce.com ◁ for ➡ PEGACPRSA22V1 □ to obtain exam materials for free download □  
□ PEGACPRSA22V1 Reliable Exam Cost
- Test PEGACPRSA22V1 Objectives Pdf □ PEGACPRSA22V1 Reliable Braindumps □ PEGACPRSA22V1 Questions Pdf □ Easily obtain free download of □ PEGACPRSA22V1 □ by searching on ▶ www.torrentvce.com □ □ Formal PEGACPRSA22V1 Test
- sachinjvz263933.mdkgblog.com, victortckm831630.glifeblog.com, anyakptf600254.bloggactif.com, elainexngi157142.wikidirective.com, nanaoekh988618.bloggactivo.com, techpontis.net, 64maths.com, bookmarkloves.com,

bookmark-share.com, nicoleidom987701.wikigiogio.com, Disposable vapes

BONUS!!! Download part of ITPassLeader PEGACPRSA22V1 dumps for free: <https://drive.google.com/open?id=1imqXM14RUZUXNo6Fr7QoBbbxv8hlBUiu>