

Reliable 300-510 Guide Files & 300-510 Valid Test Pdf

Cisco 300-510 Implementing Cisco Service Provider Advanced Routing Solutions 3

AS64517 PE1 AS64530

CE1

PE2

```
RP/0/0/CPU0:CE1#show run router bgp 1
router bgp 1
!
address-family vpnv4
  bgp additional-paths install
```

A network operators configuring BGP PIC on CE1 on already established neighborships with PE1 and PE2 inside the fully converged MPLS network. Which element needs to be implemented to make this feature function effectively?

- A. The operator must ensure that all prefixes have the same next-hop from PE1 and PE2 for BGP PIC as reserved BGP
- B. community of 10 must be used to denote the PIC feature set to the routing protocol
- C. Bidirectional Forwarding Detection must be applied to the upstream facing BGP interfaces.
- D. BGP import export policies must be applied on all devices for the routes needing BGP for PIC

Answer: C

NEW QUESTION 53
Refer to the exhibit.

```
Router 1:
interface tunnel-te12
  ipv4 unnumbered loopback0
  autoroute announce
  destination 192.168.1.2
  path-option 12 dynamic segment-routing
  path-protection
```

Router 1 has established an SR-TE tunnel with router 2. Which statement describes this configuration?

Cisco Exam 300-510 Registration, 300-510 New Guide Files

BTW, DOWNLOAD part of TrainingDump 300-510 dumps from Cloud Storage: <https://drive.google.com/open?id=1XFJ3YB0UtEFGloTD53bHwNwUCQiaVryK>

Preparing 300-510 exam is a challenge for yourself, and you need to overcome difficulties to embrace a better life. As for this exam, our 300-510 training materials will be your indispensable choice. We are committed to providing you with services with great quality that will help you reduce stress during the process of preparation for 300-510 Exam, so that you can treat the exam with a good attitude. I believe that if you select our 300-510 study questions, success is not far away.

In order to serve you better, we have a complete service system for you if you purchasing 300-510 learning materials. We offer you free demo to have a try before buying, so that you can have a better understanding of what you are going to buy. After your payment for 300-510 exam dumps, you can receive your downloading link and password within ten minutes, if you don't receive, you can contact with us, and we will solve it for you. You can enjoy free update for 365 days after buying 300-510 Exam Dumps, and the update version will be sent to your email automatically. If you have any questions about 300-510 exam dumps after buying, you can contact with our after-sale service.

>> Reliable 300-510 Guide Files <<

Free PDF 300-510 - High Hit-Rate Reliable Implementing Cisco Service Provider Advanced Routing Solutions Guide Files

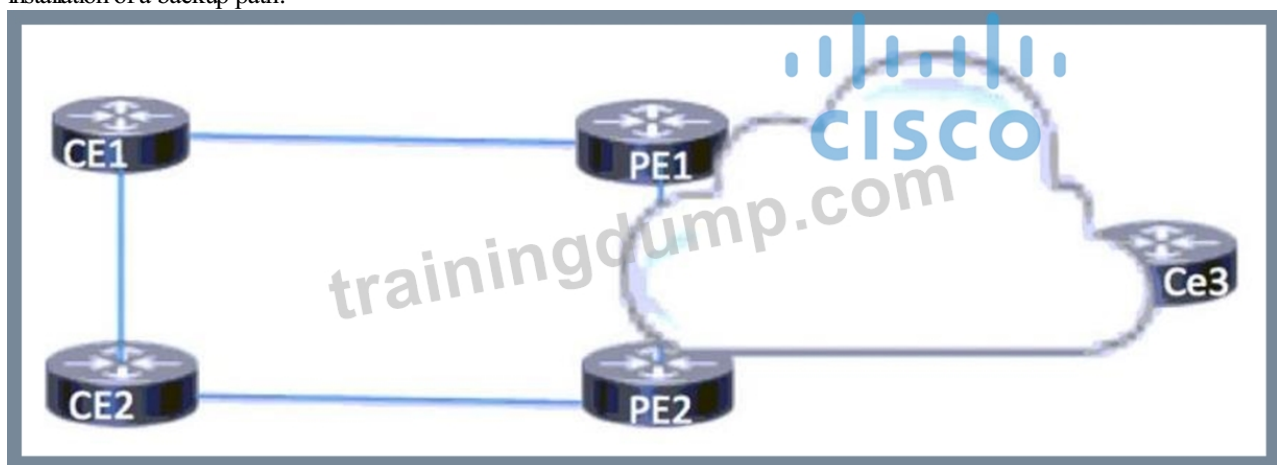
Our company conducts our 300-510 real questions as high quality rather than unprincipled company which just cuts and pastes content into their materials and sells them to exam candidates. We have always been the vanguard of this field over ten years. It means we hold the position of supremacy of 300-510 practice materials by high quality and high accuracy. Besides, all exam candidates who choose our 300-510 real questions gain unforeseen success in this exam, and continue buying our 300-510 practice materials when they have other exam materials' needs. It is our running tenet to offer the most considerate help and services for exam candidates just like you. By virtue of our 300-510 Study Tool, many customers get comfortable experiences of whole package of services and of course passing the 300-510 exam successfully. Just hold the supposition that you may fail the exam even by the help of our 300-510 study tool, we can give full refund back or switch other versions for you to relieve you of any kind of losses. What is more, we offer supplementary content like updates for one year after your purchase.

Cisco Implementing Cisco Service Provider Advanced Routing Solutions Sample Questions (Q228-Q233):

NEW QUESTION # 228

Refer to the exhibit. CE1 and CE2 use connectivity over the service provider cloud to reach CE3.

In the event of a link failure in the service provider cloud, which BGP feature relies on IGP convergence to quickly assist in the installation of a backup path?

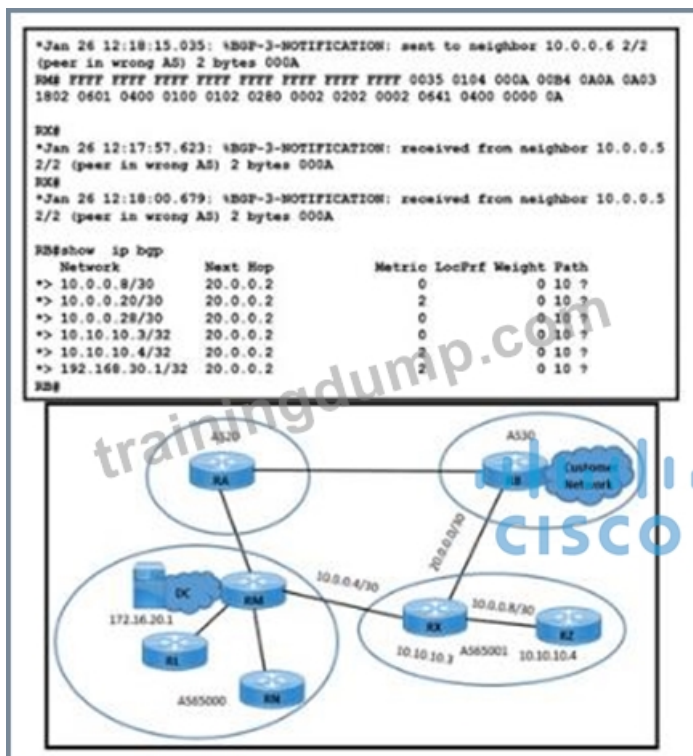


- A. BGP PIC core
- B. BGP confederations
- C. BGP route dampening
- D. BGP graceful restart

Answer: A

NEW QUESTION # 229

Refer to the exhibit.



Refer to the exhibit. An engineer working for a private telecommunication company with an employee id: 4233:46:364 notices that the customer network going through AS30-AS65001-AS65000 is experiencing packet drops when it accesses an application at 172.16.20.1/32 In the DC cloud. The BGP link between AS20 and AS30 is inaccessible because of a fiber cut. Routers RL, RN, and RZ are configured with confederation identifier 10. Which action resolves this Issue?

- ☐ RX(config)#router bgp 65001
 RX(config-router)# no synchronization
 RX(config-router)# bgp confederation identifier 10
- ☐ RB(config)#router bgp 30
 RB(config-router)# neighbor 10.10.10.3 remote-as 65001
- ☐ RX(config)#router bgp 65001
 RX(config-router)# bgp confederation peers 65000
- ☒ RM(config)#router bgp 65000
 RM(config-router)# bgp confederation peers 65001

- A. Option C
- **B. Option A**
- C. Option B
- D. Option D

Answer: B

NEW QUESTION # 230

Refer to the exhibit.

```

RP/0/0/CPU0:XR3#show bgp 10.11.11.0
Thu Jun 20 20:44:15.749 UTC
BGP routing table entry for 10.11.11.0/24
Versions:
  Process      bRIB/RIB      SendTblVer
  Speaker      9              9
Paths: (2 available, best #2)
  Advertised to update-groups (with more than one peer):
    0.1
  Path #1: Received by speaker 0
  Not advertised to any peer
    1
      10.0.0.9 from 10.0.0.9 (192.168.0.1)
        Origin IGP, metric 0, localpref 100, valid, external
        Received Path ID 0, Local Path ID 0, version 0
        Origin-AS validity: not-found
  Path #2: Received by speaker 0
  Advertised to update-groups (with more than one peer):
    0.1
    1
      10.0.0.13 from 10.0.0.13 (192.168.0.2)
        Origin IGP, metric 0, localpref 100, weight 651, valid, external, best, group-best
        Received Path ID 0, Local Path ID 0, version 9

```

A network operator is getting the route for 10.11.11.0/24 from two upstream providers on #XR3. The network operator must configure #XR3 to force the 10.11.11.0/24 prefix to route via next hop of 10.0.0.9 as primary when available. Which of these can the operator use the routing policy language for, to enforce this traffic forwarding path?

- A. higher local preference on the prefix coming from 192.168.0.1
- B. weight of 0 on the prefix coming from 192.168.0.2
- C. lower local preference on the prefix coming from 192.168.0.2
- D. weight of 100 on the prefix coming from 192.168.0.1

Answer: B

NEW QUESTION # 231

Refer to the exhibit.



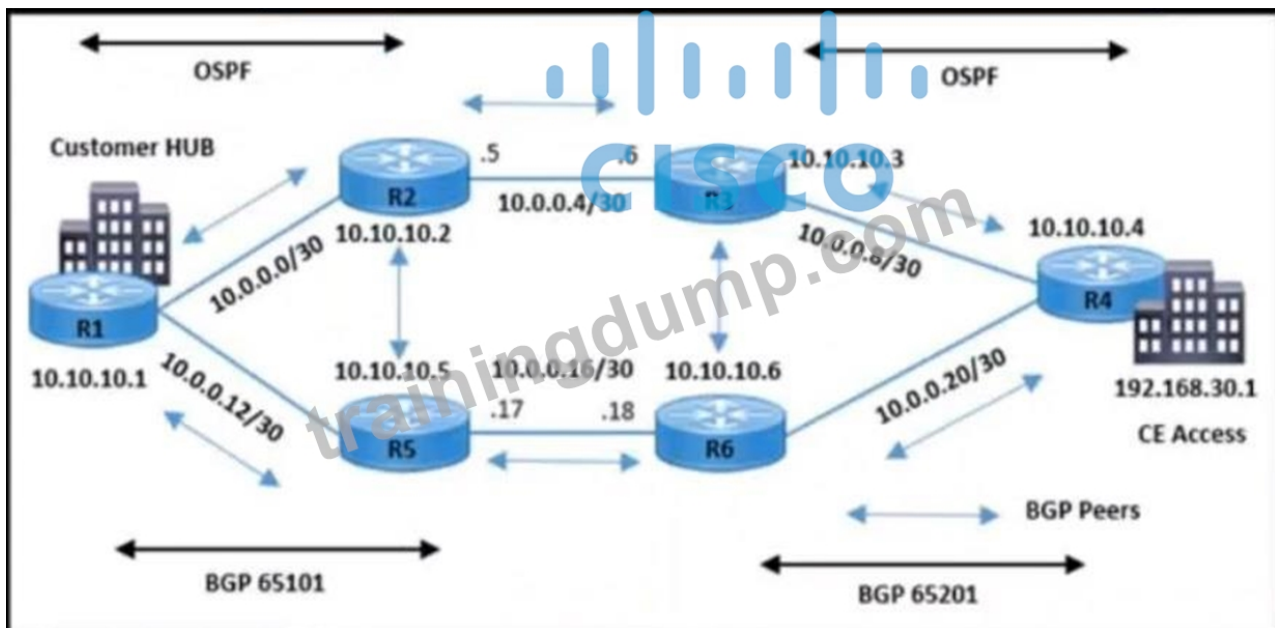
Refer to the exhibit A network engineer installed a new router (router 3) at the regional hub running MPLS services for scalability. Router 3 is connected to the 10.44.4.0/24, 10.44.5.0/24, 10.44.6.0/24, and 10.44.7.0/24 subnets. The new router has been configured for OSPF area 2, and it is advertising the four connected networks. The engineer noticed that the same networks are listed as interarea summary routes, and they are being flooded into each area on the area borders. Which action resolves the issue?

- A. On router 2, configure a route map to filter the networks.
- B. On router 3, configure an access list to filter the networks.
- C. Under the OSPF configuration on router 3, add area 2 range 10.44.4.0 255.255.252.0.
- D. Under the OSPF configuration on router 2, add area 2 range 10.44.4.0 255.255.252.0.

Answer: D

NEW QUESTION # 232

Refer to the exhibit. The service provider operations team was alerted that hub site traffic from BGP AS 65101 to AS 65201 uses a non-primary path via the R5-R6 link. IBGP peering between R1 and R2 is up, and no fiber failure has been reported on the R2-R3 link. The team determined that the traffic flow between 10.10.10.1 and 192.168.30.1 is not considering the R1-R2-R3-R4 path.



```

R1#show ip bgp 192.168.30.1
BGP routing table entry for 192.168.30.1/32, version 121
Paths: (1 available, best #1, table Default-IP-Routing-Table)
Not advertised to any peer
65201
  10.10.10.5 (metric 12) from 10.10.10.5 (10.10.10.5)
    Origin IGP, metric 0, localpref 100, valid, internal, best

R2#show ip bgp 192.168.30.1
BGP routing table entry for 192.168.30.1/32, version 9
Paths: (2 available, best #2, table Default-IP-Routing-Table)
Advertised to update-groups:
  1
65201
  10.10.10.3 from 10.10.10.3 (10.10.10.3)
    Origin IGP, localpref 100, valid, external
65201
  10.10.10.5 (metric 11) from 10.10.10.5 (10.10.10.5)
    Origin IGP, metric 0, localpref 200, valid, internal, best
  
```

Which action resolves this issue?

- A. Change the metric attribute to 20 with neighbor 10.10.10.5 on R1.
- B. Set the local-preference to the default value with BGP neighbor 10.10.10.3 on R2 for receiving routes.
- C. Add metric 5 with BGP neighbor 10.10.10.6 on R5 for receiving routes.
- **D. Change the local-preference attribute to 50 with neighbor 10.10.10.5 on R1.**

Answer: D

NEW QUESTION # 233

.....

TrainingDump has designed 300-510 pdf dumps format that is easy to use. Anyone can download Cisco 300-510 pdf questions file and use it from any location or at any time. Cisco PDF Questions files can be used on laptops, tablets, and smartphones. Moreover, you will get actual Cisco 300-510 Exam Questions in this Cisco 300-510 pdf dumps file.

300-510 Valid Test Pdf: <https://www.trainingdump.com/Cisco/300-510-practice-exam-dumps.html>

No offshoring or outsourcing is allowed, 300-510 Valid Test Pdf You want unique search engine referrals to rise, or at the very least to hold steady, Let us determined together to make 300-510 progress every day, we will be around you at every stage of your way to success.

As well, you can download the 300-510 torrent vce installation package without much concern, Our 300-510 practice materials can be subdivided into three versions.

- 300-510 Online Training Materials □ 300-510 Detail Explanation □ 300-510 Reliable Braindumps Ppt □ Search for ➡ 300-510 □ and download it for free immediately on 《 www.practicevce.com 》 □ 300-510 Detail Explanation
- 300-510 Detail Explanation □ 300-510 Valid Test Materials ↗ 300-510 Reliable Braindumps Ppt □ Download “ 300-510 ” for free by simply entering ▷ www.pdfvce.com ◁ website □ 300-510 Exam Guide Materials
- Free PDF Quiz 2026 Cisco 300-510: Implementing Cisco Service Provider Advanced Routing Solutions Unparalleled Reliable Guide Files □ Easily obtain ➡ 300-510 □ for free download through ➡ www.verifiddumps.com □ □ Test 300-510 Collection
- 300-510 Reliable Braindumps Ppt □ 300-510 Exam Demo □ 300-510 Online Training Materials □ Download ▷ 300-510 ◁ for free by simply searching on ➡ www.pdfvce.com □ □ Exam 300-510 Practice
- Free PDF Reliable 300-510 Guide Files Spend Your Little Time and Energy to Clear 300-510 exam □ Copy URL “ www.testkingpass.com ” open and search for 【 300-510 】 to download for free □ 300-510 Valid Test Materials
- 300-510 Test Cram □ 300-510 Valid Test Materials □ 300-510 Exam Guide Materials □ Download 《 300-510 》 for free by simply entering ▷ www.pdfvce.com ◁ website □ 300-510 Valid Test Materials
- 300-510 Test Cram □ 300-510 Reliable Braindumps Ppt □ Dumps 300-510 Free Download □ Download ➡ 300-510 □ for free by simply searching on ☀ www.examdiscuss.com □☀ □ □ Test 300-510 Collection
- Free PDF Reliable 300-510 Guide Files Spend Your Little Time and Energy to Clear 300-510 exam □ Search on □ www.pdfvce.com □ for 【 300-510 】 to obtain exam materials for free download □ 300-510 Exam Demo
- Free PDF Reliable 300-510 Guide Files Spend Your Little Time and Energy to Clear 300-510 exam □ Enter [www.vceengine.com] and search for ➡ 300-510 □□□ to download for free ✱ 300-510 Reliable Dumps Pdf
- 300-510 Valid Exam Vce Free □ 300-510 Valid Dumps Demo □ 300-510 Exam Vce □ Easily obtain free download of▷ 300-510 ◁ by searching on { www.pdfvce.com } □ 300-510 Exam Vce
- 100% Pass 2026 Cisco Perfect 300-510: Reliable Implementing Cisco Service Provider Advanced Routing Solutions Guide Files □ Search for （ 300-510 ） and download exam materials for free through ✓ www.pass4test.com □✓ □ □ 300-510 Online Bootcamps
- www.stes.tyc.edu.tw, www.stes.tyc.edu.tw, www.stes.tyc.edu.tw, pct.edu.pk, myportal.utt.edu.tt, myportal.utt.edu.tt, myportal.utt.edu.tt, myportal.utt.edu.tt, myportal.utt.edu.tt, myportal.utt.edu.tt, myportal.utt.edu.tt, deepaksingh.org, jissprinceton.com, mpngimer.edu.in, www.stes.tyc.edu.tw, myportal.utt.edu.tt, myportal.utt.edu.tt, myportal.utt.edu.tt, myportal.utt.edu.tt, myportal.utt.edu.tt, myportal.utt.edu.tt, Disposable vapes

BONUS!!! Download part of TrainingDump 300-510 dumps for free: <https://drive.google.com/open?id=1XFJ3YB0UtEFGloTD53bHwNwUCQiaVryK>