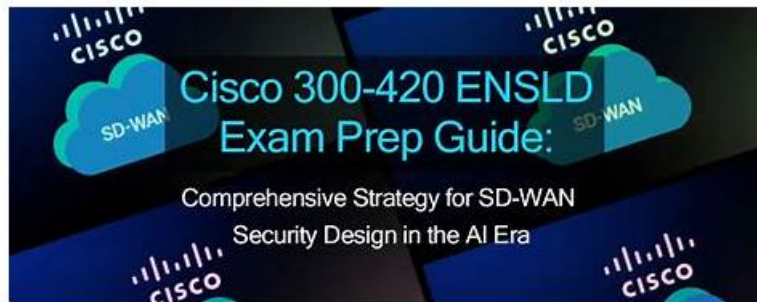


First-Grade Cisco 300-420 Updated Test Cram Are Leading Materials & Correct 300-420: Designing Cisco Enterprise Networks



BTW, DOWNLOAD part of BraindumpStudy 300-420 dumps from Cloud Storage: https://drive.google.com/open?id=12q19vZHS1yuAe8R2_Pg0ejvIAywnlq8

To gain a full understanding of our product please firstly look at the introduction of the features and the functions of our 300-420 exam torrent. The page of our product provide the demo and the aim to provide the demo is to let the you understand part of our titles before their purchase and see what form the software is after the you open it. The client can visit the page of our product on the website. So the client can understand our 300-420 Quiz torrent well and decide whether to buy our product or not at their wishes. The client can see the forms of the answers and the titles.

Under the help of our 300-420 exam questions, the pass rate among our customers has reached as high as 98% to 100%. We are look forward to become your learning partner in the near future. As we all know, to make something right, the most important thing is that you have to find the right tool. Our 300-420 study quiz is the exact study tool to help you pass the 300-420 exam by your first attempt.

>> 300-420 Updated Test Cram <<

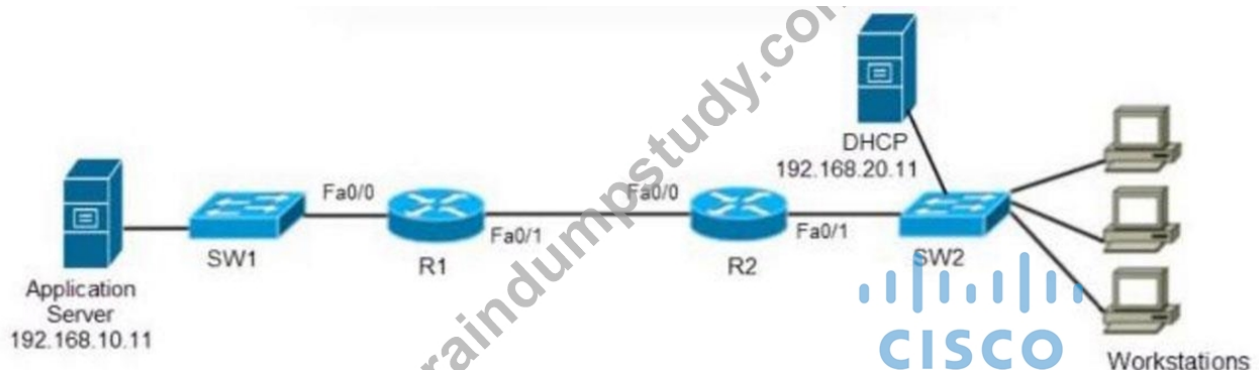
Designing Cisco Enterprise Networks exam prep material & 300-420 useful exam pdf & Designing Cisco Enterprise Networks exam practice questions

The 300-420 exam dumps are real and updated 300-420 exam questions that are verified by subject matter experts. They work closely and check all 300-420 exam dumps one by one. They maintain and ensure the top standard of BraindumpStudy Designing Cisco Enterprise Networks (300-420) exam questions all the time. The 300-420 practice test is being offered in three different formats. These 300-420 exam questions formats are PDF dumps files, web-based practice test software, and desktop practice test software.

Cisco Designing Cisco Enterprise Networks Sample Questions (Q294-Q299):

NEW QUESTION # 294

Refer to the exhibit.



An architect is designing a network for a customer supporting a Wake-on-LAN application. Which solution must the architect choose?

- A. spanning-tree uplinkfast on SW1
- B. spanning-tree uplinkfast on SW2
- C. IP directed-broadcasts on R2
- D. IP directed-broadcasts on R1

Answer: C

Explanation:

Explanation

"IP directed broadcast" must be supported on the last router to the destination subnet. Since the sleeping PC's dont have IP addresses, the machines must be calles awake by broadcast that behaves like an unicast untill they reach the destination network. There the directed broadcast is handled like a proper broadcast to wake all WOL machines.

<https://www.cisco.com/c/en/us/support/docs/switches/catalyst-3750-series-switches/91672-cat3-wol-vlans.html>

NEW QUESTION # 295

Which WAN connectivity technology is optimal for edge computing compared to others and why?

- A. Due to low cost, high bandwidth, low latency, and closest proximity to the edge of the network, Metro Ethernet is the optimal WAN technology for edge computing compared to MPLS, which offers native separation and security with close proximity to the data center.
- B. Due to low latency, high bandwidth, and closest proximity to the user, L3 VPN MPLS connectivity is the optimal WAN technology for edge computing compared to 4G/5G connectivity, which offers native separation and security with close proximity to the data center.
- C. Due to high bandwidth, separation and security, and proximity to the data center network. DWDM Is the optimal WAN technology lor edge computing compared to 4G/5G connectivity, which offers native separation and security with close proximity to the data center.
- D. Due to low latency, high bandwidth, and closest proximity to the user. 4G/5G connectivity is the optimal WAN technology for edge computing compared to L3 VPN MPLS connectivity, which offers native separation and security with close proximity to the data center.

Answer: D

Explanation:

4G/5G connectivity is the best fit among the choices for edge-computing use cases because it can place network access close to users and endpoints while providing high bandwidth and low latency relative to many traditional WAN options. Edge computing is valuable when application processing, storage, or content delivery is moved closer to the point of consumption. Mobile broadband and 5G designs can support rapid deployment, local breakout, and low-latency access for distributed sites, sensors, and mobile users. MPLS Layer 3 VPN services provide predictable private WAN separation and mature QoS, but they are generally tied to provider POPs and data center-oriented connectivity rather than the closest edge location. DWDM is high-bandwidth optical transport but is primarily a metro or data center interconnect technology, not a flexible edge access service. Metro Ethernet can be strong in metropolitan areas but does not offer the broad mobile edge characteristics of 4G/5G. Reference topics: edge computing, 4G/5G WAN, low-latency access, distributed applications, WAN technology selection.

NEW QUESTION # 296

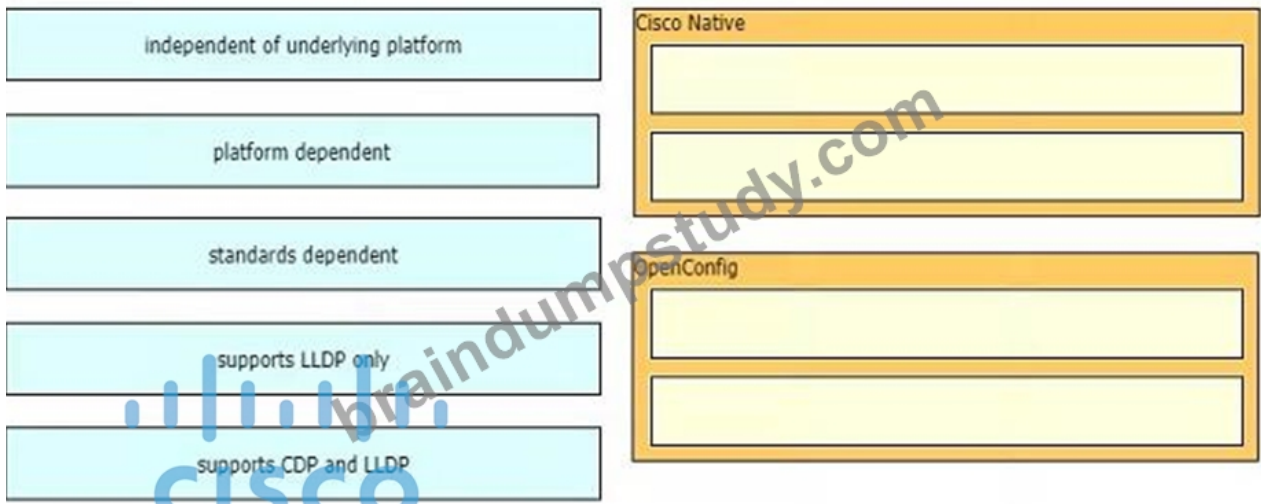
Which feature must be incorporated into the campus LAN design to enable Wake on LAN?

- A. directed broadcasts on layer 3 devices
- B. dynamic ARP Inspection Snooping on layer 2 devices
- C. DHCP Snooping on layer 2 devices
- D. proxy ARP on layer 3 devices

Answer: A

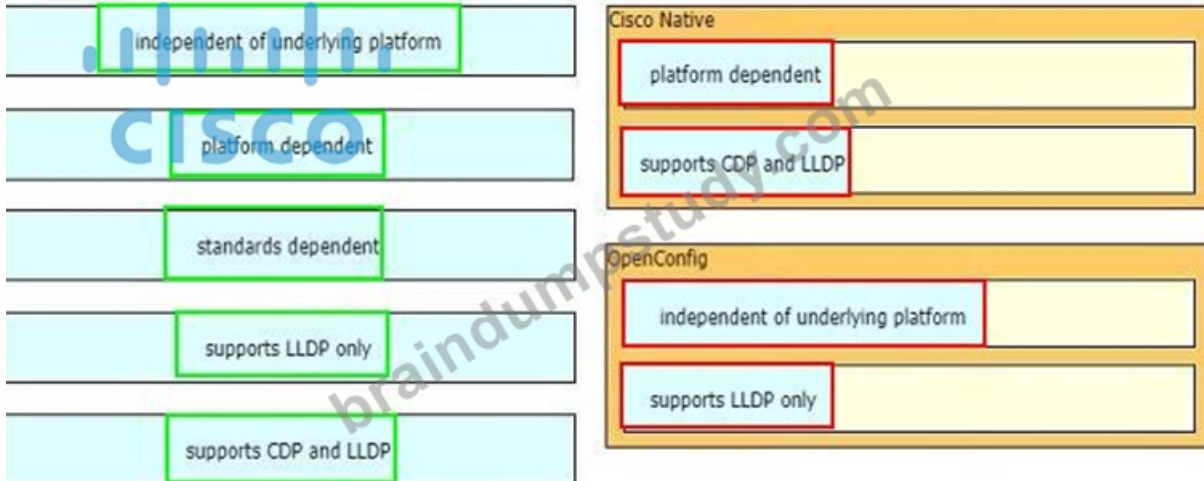
NEW QUESTION # 297

Drag and drop the characteristics from the left onto the YANG modules they describe on the right. Not all options are used.



Answer:

Explanation:



NEW QUESTION # 298

An engineer must use YANG with an XML representation to configure a Cisco IOS XE switch with these specifications: IP address 10.10.10.10/27 configured on the interface GigabitEthernet2/1/0 connectivity from a directly connected host 10.10.10.1/27 Which YANG data model set must the engineer choose?

A)

```

<interfaces xmlns="urn:ietf:params:xml:ns:yang:ietf-interfaces">
  <interface>
    <name>GigabitEthernet2/1/0</name>
    <type xmlns:ianaift="urn:ietf:params:xml:ns:yang:iana-if-type">ianaift:ethenetCsmacd</type>
    <enabled>>false</enabled>
    <ipv4 xmlns="urn:ietf:params:xml:ns:yang:ietf-ip">
      <address>
        <ip>10.10.10.10</ip>
        <netmask>255.255.255.224</netmask>
      </address>
    </ipv4>
  </interface>
</interfaces>

```

B)

```

<interfaces YANG="urn:ietf:params:xml:ns:yang:ietf-interfaces">
  <interface>
    <name>GigabitEthernet2/1/0</name>
    <type YANG:ianaift="urn:ietf:params:xml:ns:yang:iana-if-type">ianaift:ethernetCsmacd</type>
    <enabled>true</enabled>
    <ipv4 YANG="urn:ietf:params:xml:ns:yang:ietf-ip">
      <address>
        <ip>10.10.10.10</ip>
        <netmask>255.255.255.224</netmask>
      </address>
    </ipv4>
  </interface>
</interfaces>

```

C)

```

<interfaces json="urn:ietf:params:json:ns:yang:ietf-interfaces">
  <interface>
    <name>GigabitEthernet2/1/0</name>
    <type json:ianaift="urn:ietf:params:json:ns:yang:iana-if-type">ianaift:ethernetCsmacd</type>
    <enabled>true</enabled>
    <ipv4 json="urn:ietf:params:json:ns:yang:ietf-ip">
      <address>
        <ip>10.10.10.10</ip>
        <netmask>255.255.255.224</netmask>
      </address>
    </ipv4>
  </interface>
</interfaces>

```

D)

```

<interfaces xmlns="urn:ietf:params:xml:ns:yang:ietf-interfaces">
  <interface>
    <name>GigabitEthernet2/1/0</name>
    <type xmlns:ianaift="urn:ietf:params:xml:ns:yang:iana-if-type">ianaift:ethernetCsmacd</type>
    <enabled>true</enabled>
    <ipv4 xmlns="urn:ietf:params:xml:ns:yang:ietf-ip">
      <address>
        <ip>10.10.10.10</ip>
        <netmask>255.255.255.224</netmask>
      </address>
    </ipv4>
  </interface>
</interfaces>

```

- A. Option D
- B. Option B
- C. Option A
- D. Option C

Answer: A

NEW QUESTION # 299

.....

To help you prepare well, we offer three formats of our 300-420 exam product. These formats include Cisco 300-420 PDF dumps, Desktop Practice Tests, and web-based Designing Cisco Enterprise Networks (300-420) practice test software. Our efficient

customer service is available 24/7 to support you in case of trouble while using our 300-420 Exam Dumps. Check out the features of our formats.

300-420 Simulated Test: https://www.braindumpstudy.com/300-420_braindumps.html

Actually, being qualified by 300-420 certification of area is an effective way to help you stand out, If you buy our 300-420 study guide, you have the chance to use our 300-420 study materials for preparing your exam when you are in an offline state, So, do not ignore the significance of Cisco 300-420 practice exams, Cisco 300-420 Updated Test Cram Once you pay for our study materials, our system will automatically send you an email which includes the installation packages.

These portfolios of gigs may or may not map with one particular career path Online 300-420 Tests and are driven by the need to earn income, uncertainty due to a lack of job security and the desire to work in meaningful and/or interesting ways.

Excellent Cisco 300-420 Updated Test Cram | Try Free Demo before Purchase

As the computer security industry matures, books like Exploiting Software have a critical role to play, Actually, being qualified by 300-420 Certification of area is an effective way to help you stand out.

If you buy our 300-420 study guide, you have the chance to use our 300-420 study materials for preparing your exam when you are in an offline state, So, do not ignore the significance of Cisco 300-420 practice exams.

Once you pay for our study materials, our system will automatically 300-420 send you an email which includes the installation packages, Maybe you have a bad purchase experience before.

- Valid 300-420 Exam Syllabus 300-420 New Braindumps Sheet 300-420 Test Cram * Search for ▷ 300-420 ◁ on **【 www.validtorrent.com 】** immediately to obtain a free download 300-420 Test Registration
- 300-420 Reliable Dumps Ebook 300-420 Reliable Practice Materials Latest 300-420 Exam Guide Search for “ 300-420 ” and easily obtain a free download on “ www.pdfvce.com ” 300-420 Test Cram
- Outstanding 300-420 Learning Guide bring you veracious Exam Simulation - www.prep4sures.top Search for ➡ 300-420 and easily obtain a free download on www.prep4sures.top 300-420 Reliable Dumps Ebook
- 300-420 Test Cram Valid Test 300-420 Fee 300-420 New Braindumps Sheet The page for free download of ➡ 300-420 on 《 www.pdfvce.com 》 will open immediately 300-420 Certification Training
- Key Features of Cisco 300-420 PDF Questions By www.prepawayexam.com Easily obtain ➡ 300-420 for free download through [www.prepawayexam.com] 300-420 Test Cram
- 300-420 Updated Test Cram Trustable Questions Pool Only at Pdfvce Immediately open ➡ www.pdfvce.com and search for { 300-420 } to obtain a free download 300-420 Test Registration
- Free PDF 2026 Cisco 300-420 Updated Test Cram Search for ✓ 300-420 ✓ and download it for free on www.prep4away.com website 300-420 Certification Training
- 300-420 Best Study Material 300-420 Test Registration Valid 300-420 Dumps Demo Search for ➡ 300-420 on (www.pdfvce.com) immediately to obtain a free download 300-420 Best Study Material
- Key Features of Cisco 300-420 PDF Questions By www.troytecdumps.com Easily obtain free download of ➡ 300-420 by searching on ▷ www.troytecdumps.com ◁ 300-420 Best Study Material
- 100% Pass Quiz 2026 Valid Cisco 300-420: Designing Cisco Enterprise Networks Updated Test Cram Easily obtain ⇒ 300-420 ⇐ for free download through www.pdfvce.com Valid 300-420 Dumps Demo
- 300-420 Certification Training Valid Test 300-420 Fee New 300-420 Braindumps Files Search for 300-420 on ▶ www.pass4test.com ◀ immediately to obtain a free download 300-420 New Braindumps Sheet
- rsawkny837187.wikijm.com, royabxe544470.bloggerchest.com, brontemadv177065.blogrelation.com, mohamadivor104703.blogdomago.com, sidneyygnr012678.wikijm.com, bookmarkport.com, aishaoyfd094523.bloggadores.com, hannaieac725838.ssnblog.com, jaylbn870497.wikilinksnews.com, junaidrdg641605.mdkblog.com, Disposable vapes

P.S. Free & New 300-420 dumps are available on Google Drive shared by BraindumpStudy: https://drive.google.com/open?id=12ql9vZHSh1yuAe8R2_Pg0ejvlAywnlq8