

Latest 300-410 Braindumps Questions, 300-410 Vce Free



Braindump2go Guarantee All Exams 100% Pass
One Time!

> Vendor: Cisco

> Exam Code: 300-410

> Exam Name: Implementing Cisco Enterprise Advanced Routing and Services (ENARSI)

> New Updated Questions from Braindump2go

> (Updated in February/2023)

[Visit Braindump2go and Download Full Version 300-410 Exam Dumps](#)

QUESTION 354

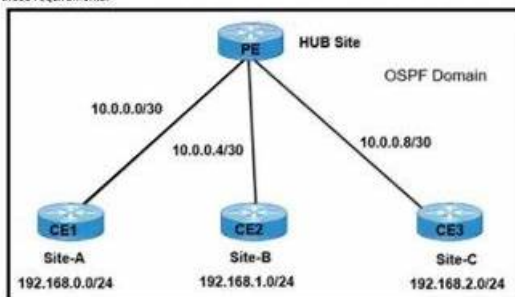
What is the function of BFD?

- A. It provides uniform failure detection regardless of media type.
- B. It creates high CPU utilization on hardware deployments.
- C. It negotiates to the highest version if the neighbor version differs.
- D. It provides uniform failure detection on the same media type.

Answer: A

QUESTION 355

Refer to the exhibit. A network engineer must establish communication between three different customer sites with these requirements:



* Site-A: must be restricted to access to any users at Site-B or Site-C.

* Site-B and Site-C: must be able to communicate between sites and share routes using OSPF.

[300-410 Exam Dumps](#) [300-410 Exam Questions](#) [300-410 PDF Dumps](#) [300-410 VCE Dumps](#)

<https://www.braindump2go.com/300-410.html>

BTW, DOWNLOAD part of Pass4SureQuiz 300-410 dumps from Cloud Storage: <https://drive.google.com/open?id=1KWJ0BB5gmjIHQ5frfy9y0L56-e4X-I0>

Do you want to find a job that really fulfills your ambitions? That's because you haven't found an opportunity to improve your ability to lay a solid foundation for a good career. Our 300-410 learning materials are carefully compiled by industry experts based on the examination questions and industry trends in the past few years. The knowledge points are comprehensive and focused. You don't have to worry about our learning from 300-410 Exam Question. We assure you that our 300-410 learning materials are easy to understand and use the fewest questions to convey the most important information.

Cisco 300-410 certification is an essential credential for IT professionals who want to advance their careers in enterprise networking. Implementing Cisco Enterprise Advanced Routing and Services certification demonstrates that the candidate has the skills and knowledge required to design, implement, and troubleshoot complex enterprise network solutions using Cisco technologies. With the rapid growth of cloud computing, IoT, and other emerging technologies, the demand for skilled enterprise network professionals is only increasing, and the Cisco 300-410 Certification can help IT professionals stand out in a competitive job market.

>> Latest 300-410 Braindumps Questions <<

300-410 Vce Free & Valid 300-410 Test Discount

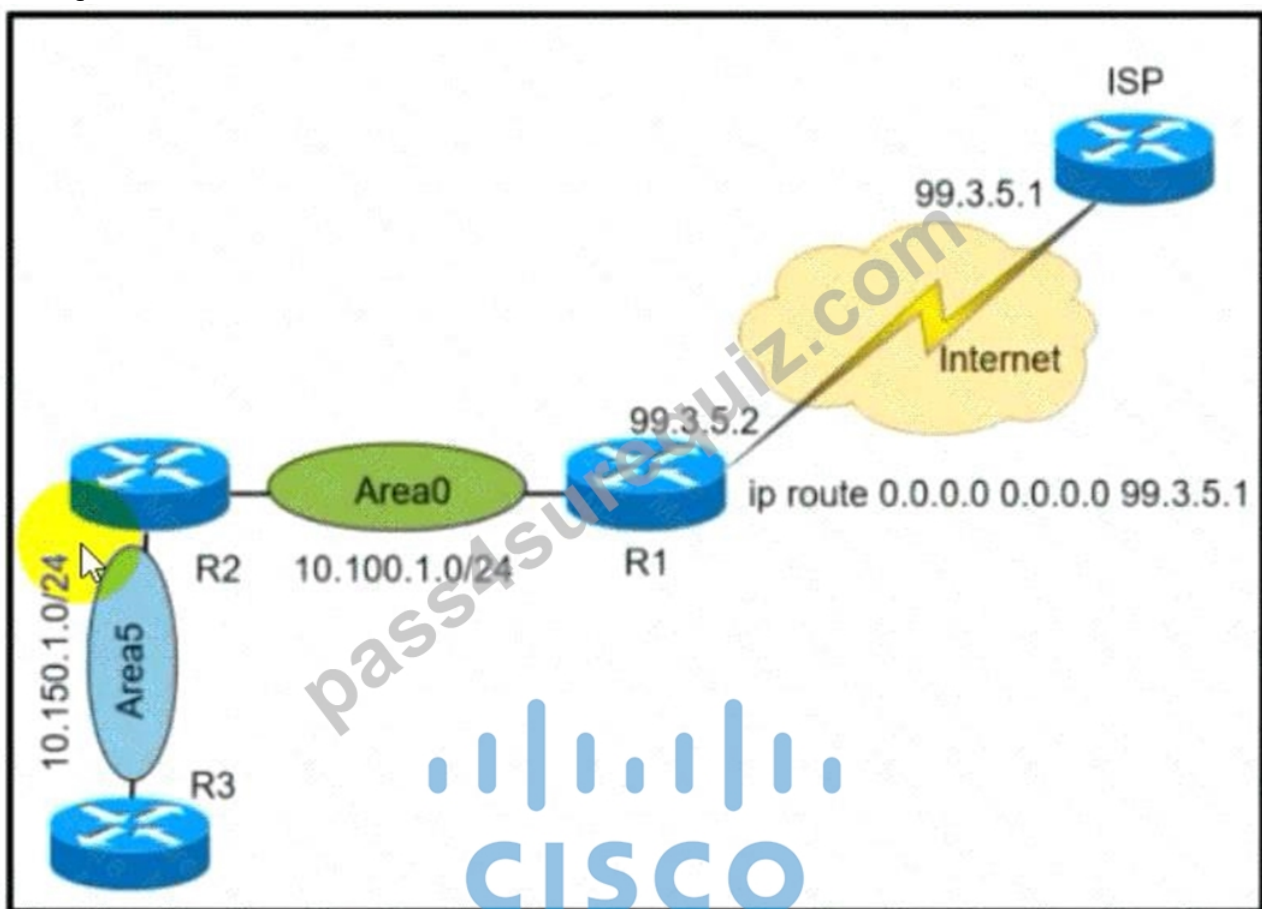
All these three 300-410 real dumps formats contain the actual and updated Implementing Cisco Enterprise Advanced Routing and

Services 300-410 exam questions that will surely repeat in the upcoming 300-410 exam and you can easily pass it with good scores. Today is the best time to learn new in-demand skills and upgrade your knowledge. Yes, you can do this easily. Just enroll in the Implementing Cisco Enterprise Advanced Routing and Services 300-410 Exam and start preparation with Implementing Cisco Enterprise Advanced Routing and Services 300-410 exam dumps. The updated, real, and verified Cisco Dumps are ready for download. Just pay affordable Implementing Cisco Enterprise Advanced Routing and Services 300-410 exam dumps charges and get the exam dumps file in your mailbox and start Pass4SureQuiz 300-410 exam preparation.

Cisco 300-410 exam, also known as Implementing Cisco Enterprise Advanced Routing and Services, is designed for IT professionals who are interested in advancing their knowledge and skills in enterprise networking. Implementing Cisco Enterprise Advanced Routing and Services certification exam is part of the CCNP Enterprise track and focuses on advanced routing technologies and services such as BGP, OSPF, and PBR. Passing 300-410 Exam will demonstrate your ability to configure, troubleshoot, and optimize complex enterprise networks.

Cisco Implementing Cisco Enterprise Advanced Routing and Services Sample Questions (Q64-Q69):

NEW QUESTION # 64



Refer to the exhibit. A network administrator redistributed the default static route into OSPF toward all internal routers to reach to Internet. Which set of commands restores reachability to the Internet by internal routers?

- A. router ospf 1 redistribute static subnets
- B. router ospf 1 network 0.0.0.0 0.0.0.0 area 0
- C. router ospf 1 default-information originate
- D. router ospf 1 redistribute connected 0.0.0.0

Answer: C

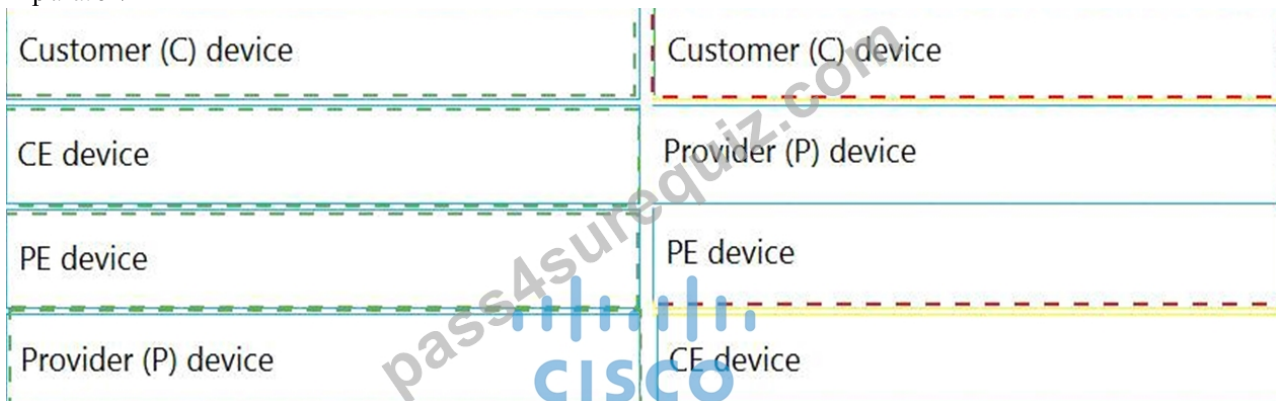
NEW QUESTION # 65

Drag and drop the MPLS VPN device types from the left onto the definitions on the right.

Customer (C) device	device in the core of the provider network that switches MPLS packets
CE device	device that attaches and detaches the VPN labels to the packets in the provider network
PE device	device in the enterprise network that connects to other customer devices
Provider (P) device	device at the edge of the enterprise network that connects to the SP network

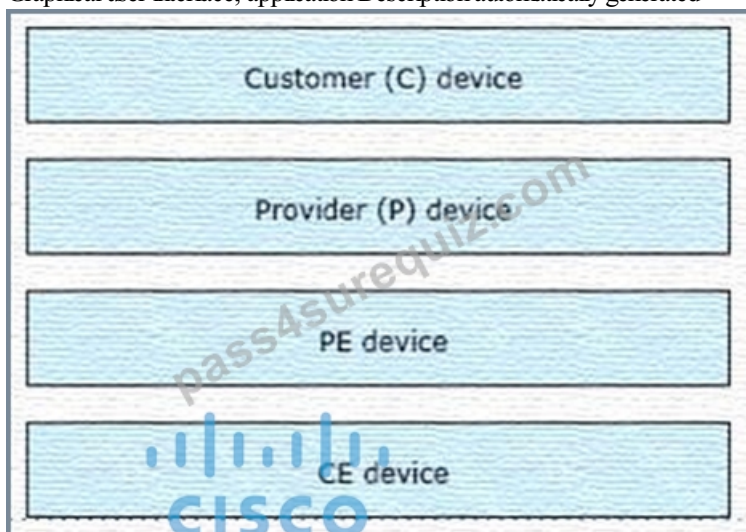
Answer:

Explanation:



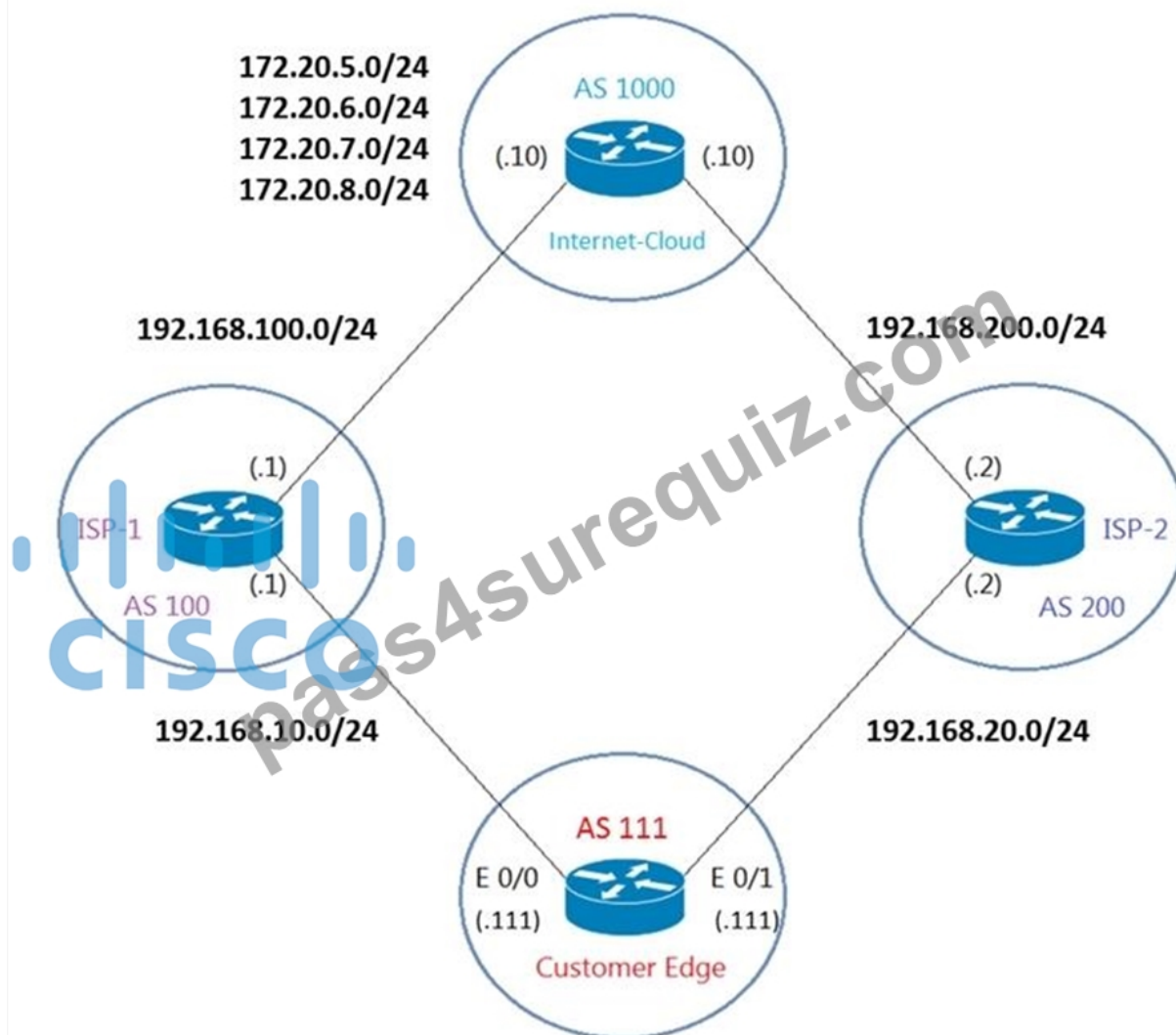
Explanation

Graphical user interface, application Description automatically generated



NEW QUESTION # 66

Refer to Exhibit. AS 111 wanted to use AS 200 as the preferred path for 172.20.5.0/24 and AS 100 as the backup. After the configuration, AS 100 is not used for any other routes. Which configuration resolves the issue?



Customer-Edge

```
ip prefix-list PLIST1 permit 172.20.5.0/24
!
route-map SETLP permit 10
  match ip address prefix-list PLIST1
  set local-preference 90
!
router bgp 111
  neighbor 192.168.10.1 remote-as 100
  neighbor 192.168.10.1 route-map SETLP in
  neighbor 192.168.20.2 remote-as 200
```

- A. route-map SETLP permit 10
match ip address prefix-list PLIST1
set local-preference 99
route-map SETLP permit 20
- B. route-map SETLP permit 10
match ip address prefix-list PLIST1
set local-preference 110

- route-map SETLP permit 20
- C. router bgp 111
no neighbor 192.169.10.1 route-map SETLP in
neighbor 192.168.10.1 route-map SETLP out
- D. router bgp 111
no neighbor 192.168.10.1 route-map SETLP in
neighbor 192.168.20.2 route-map SETLP in

Answer: A

Explanation:

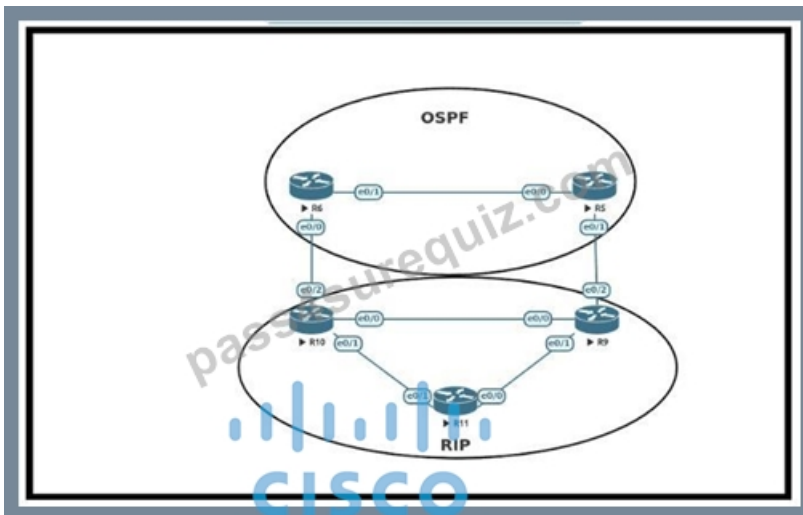
There is an implicit deny all at the end of any route-map so all other traffic that does not match

172.20.5.0/24 would be dropped. Therefore we have to add a permitsequence at the end of the route-map to allow other traffic.

The default value of Local Preference is 100 and higher value is preferred so we have to set the local preference of AS100 lower than that of AS200.

NEW QUESTION # 67

Refer to the exhibit.



An engineer must configure OSPF with R9 and R10 and configure redistribution between OSPF and RIP causing a routing loop. Which configuration on R9 and R10 meets this objective?

```
router ospf 1
 redistribute rip subnets tag 20
!
route-map deny_tag20 permit 10
 match tag 20
route-map deny_tag20 permit 20
!
router ospf 1
 distribute-list route-map deny_tag20 in
```

- A.

```
router ospf 1
 redistribute rip subnets tag 20
```

```
route-map deny_tag20 deny 10
 match tag 20
route-map deny_tag20 permit 20
```

```
router ospf 1
 distribute-list route-map deny_tag20 in
```

- B.

```
router ospf 1
 redistribute rip subnets tag 20
 !
route-map deny_tag20 deny 10
 match tag 20
route-map deny_tag20 deny 20
 !
router ospf 1
 distribute-list route-map deny_tag20 in
```

- C.

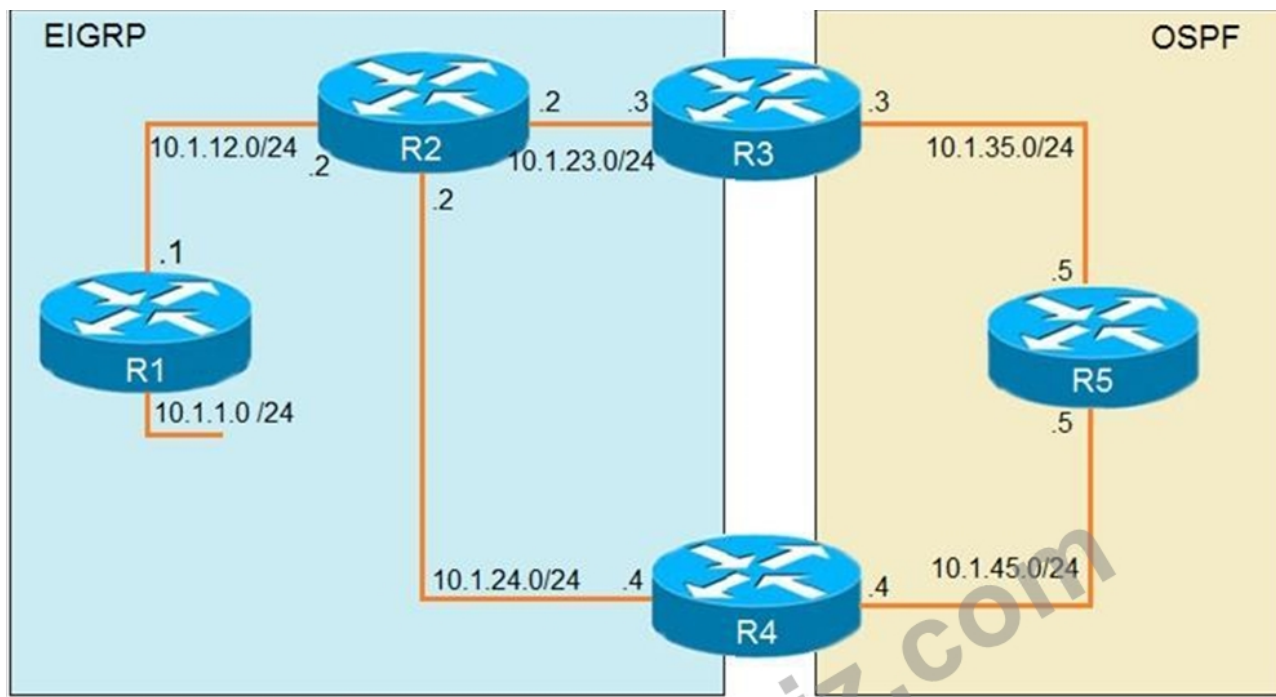
```
router ospf 1
 redistribute rip subnets tag 20
 !
route-map deny_tag20 deny 10
 match tag 20
route-map deny_tag20 permit 20
 !
router rip 1
 distribute-list route-map deny_tag20 in
```

- D.

Answer: B

NEW QUESTION # 68

Refer to the exhibit. The output of the trace route from R5 shows a loop in the network. Which configuration prevents this loop?



```

R1
router eigrp 1
 redistribute connected
 network 10.1.12.1 0.0.0.0

R3
router ospf 1
 redistribute eigrp 1 subnets
 network 10.1.35.3 0.0.0.0 area 0

R4
router eigrp 1
 redistribute ospf 1 metric 2000000 1 255 1 1500
!
router ospf 1
 network 10.1.45.4 0.0.0.0 area 0

R5#traceroute 10.1.1.1

Type escape sequence to abort.
Tracing the route to 10.1.1.1

 0 10.1.35.3 80 msec 44 msec 20 msec
 1 10.1.23.2 44 msec 104 msec 64 msec
 2 10.1.24.4 44 msec 64 msec 40 msec
 3 10.1.45.5 24 msec 40 msec 20 msec
 4 10.1.35.3 92 msec 144 msec 148 msec
 5 10.1.23.2 108 msec 76 msec 80 msec
 <output truncated>
  
```

- A.

```

R3
router eigrp 1
 redistribute OSPF 1 route-map SET-TAG
!
route-map SET-TAG permit 10
 set tag 1

R4
router eigrp 1
 redistribute ospf 1 metric 2000000 1 255 1 1500 route-map FILTER-TAG
 network 10.1.24.4 0.0.0.0
!
route-map FILTER-TAG deny 10
 match tag 1
!
route-map FILTER-TAG permit 20

```

```

R3
router ospf 1
 redistribute eigrp 1 subnets route-map SET-TAG

```

```

route-map SET-TAG deny 10
 set tag 1

```

```

R4
router eigrp 1
 redistribute ospf 1 metric 2000000 1 255 1 1500 route-map FILTER-TAG
!
route-map FILTER-TAG deny 10

```

- B. match tag 1
- C.

R3

```
router ospf 1
 redistribute eigrp 1 subnets route-map SET-TAG
```

```
route-map SET-TAG permit 10
 set tag 1
```

R4

```
router eigrp 1
 redistribute ospf 1 metric 2000000 1 255 1 1500 route-map FILTER-TAG
```

```
route-map FILTER-TAG deny 10
 match tag 1
```

```
route-map FILTER-TAG permit 20
```



- D.

Answer: C

Explanation:

The reason for the loop is that R2 is forwarding the packets destined to 10.1.1.1 to R4, instead of R1. This is because in the redistribute OSPF statement, BW metric has a higher value and delay has a value of 1. So, R2 chooses R4 over R1 for 10.1.1.0/24 subnet causing a loop.

Now, R5 learns 10.1.1.0/24 from R3 and advertises the same route to R4, that R4 redistributes back in EIGRP. If R3 sets a tag of 1 while redistributing EIGRP in OSPF, and R4 denies all the OSPF routes with tag 1 while redistributing, it will not advertise 10.1.1.0/24 back into EIGRP.

Hence, the loop will be broken.

NEW QUESTION # 69

.....

300-410 Vce Free: <https://www.pass4surequiz.com/300-410-exam-quiz.html>

- Exam Questions 300-410 Vce ☐ New 300-410 Test Blueprint ☐ Exam Questions 300-410 Vce ☐ Search for 《 300-410 》 and download it for free immediately on ☐ www.pass4test.com ☐ Valid Test 300-410 Bootcamp
- 300-410 Reliable Dumps Pdf ☐ 300-410 Certificate Exam ☐ 300-410 Certification Book Torrent ☐ Search for ► 300-410 ◀ and download it for free on ► www.pdfvce.com ☐ website ☐ 300-410 Latest Exam Simulator
- 300-410 Valid Dumps Free ☐ Premium 300-410 Files ☐ 300-410 Certification Book Torrent ☐ Search for ► 300-410 ☐ and download it for free immediately on ⇒ www.testkingpass.com ⇐ 300-410 Latest Material

- 2026 Latest Pass4SureQuiz 300-410 PDF Dumps and 300-410 Exam Engine Free Share: <https://drive.google.com/open?id=1KWJ0BB5gmglIHQ5fRfY9y0L56-e4X-I0>

2026 Latest Pass4SureQuiz 300-410 PDF Dumps and 300-410 Exam Engine Free Share: <https://drive.google.com/open?id=1KWJ0BB5gmglIHQ5fRfY9y0L56-e4X-I0>