

C_S43 Valid Test Vce & C_S43 Latest Test Camp



You must pay more attention to our C_S43 study materials. In order to provide all customers with the suitable study materials, a lot of experts from our company designed the C_S43 training materials. Not only that they compile the content of the C_S43 preparation quiz, but also they can help our customers deal with all the questions when they buy or download. We can promise that if you buy our C_S43 learning guide, it will be very easy for you to pass your exam and get the certification.

That's why it's indispensable to use SAP Certified Implementation Consultant - SAP S/4HANA Cloud Private Edition, Asset Management (C_S43_2601) (C_S43) real exam dumps. Easy4Engine understands the significance of Updated SAP C_S43 Questions, and we're committed to helping candidates clear tests in one go. To help SAP C_S43 test applicants prepare successfully in one go, Easy4Engine's C_S43 dumps are available in three formats: SAP Certified Implementation Consultant - SAP S/4HANA Cloud Private Edition, Asset Management (C_S43_2601) (C_S43) web-based practice test, desktop C_S43 practice Exam software, and C_S43 dumps PDF.

>> C_S43 Valid Test Vce <<

C_S43 Latest Test Camp - Pdf C_S43 Version

Easy4Engine SAP C_S43 practice test software is the answer if you want to score higher in the SAP C_S43 exam and achieve your academic goals. Don't let the SAP Certified Implementation Consultant - SAP S/4HANA Cloud Private Edition, Asset Management (C_S43_2601) (C_S43) certification exam stress you out! Prepare with our SAP Certified Implementation Consultant - SAP S/4HANA Cloud Private Edition, Asset Management (C_S43_2601) (C_S43) exam dumps and boost your confidence in the SAP Certified Implementation Consultant - SAP S/4HANA Cloud Private Edition, Asset Management (C_S43_2601) (C_S43) exam. We guarantee your road toward success by helping you prepare for the SAP Certified Implementation Consultant - SAP S/4HANA Cloud Private Edition, Asset Management (C_S43_2601) (C_S43) certification exam. Use the best Easy4Engine SAP C_S43 practice questions to pass your SAP Certified Implementation Consultant - SAP S/4HANA Cloud Private Edition, Asset Management (C_S43_2601) (C_S43) exam with flying colors!

SAP Certified Implementation Consultant - SAP S/4HANA Cloud Private Edition, Asset Management (C_S43_2601) Sample Questions (Q11-Q16):


NEW QUESTION # 11

Create a Maintenance Order with Checklists

The project team evaluates during the implementation project Maintenance Orders with Checklists in SAP S/4HANA Asset Management. The following features need to be checked:

- * Create a Maintenance Order with Checklist
- * Display a Maintenance Order with automatically generated Object List and Checklist.
- * Create a Maintenance Order using an Order Type which is already configured for the checklist process.

Use the following data:

Field	Value
Functional Location	##-01-PRD-01-03-HD
General Maintenance Task List	A / T-PMCLEN / 

* Display the previously created Maintenance Order with automatically generated Object List and Checklist.

Answer:

Explanation:

See the Explanation for complete Solution of this Task.

Explanation:

Task 12 Overview

In this task, you will create a maintenance order using a specific order type configured for the checklist process. The system will then automatically generate an object list and a corresponding checklist based on the equipment and task list assigned.

Step 1: Create a Maintenance Order with Checklist

You need to create a new order using a functional location and a specific task list that triggers the checklist functionality.

* Access the Transaction : Use transaction code IW31 (Create Maintenance Order).

* Initial Screen :

* Order Type : Select an order type already configured for the checklist process (typically PM01 or a specific custom type designated for checklists in your training environment).

* Press Enter .

* Enter Header and Location Data :

* Functional Location : Enter 48-01-PRD-01-03-HD .

* Description : Enter a relevant description (e.g., Pump Checklist Maintenance GR48).

* Assign the Task List :

* Go to the Operations tab or find the task list assignment section.

* General Maintenance Task List : Enter A / T-PMCLEN / 1 .

* Press Enter to validate.

* Save : Click the Save (floppy disk) icon.

Explanation : By assigning this specific functional location and general task list, you are triggering the

"Checklist" integration. The system uses the classification data you set up in Task 11 to determine that a checklist (inspection lot) is required for this job.

Step 2: Display and Verify the Checklist

After saving, you must verify that the system correctly generated the technical components of the checklist.

* Display the Order : Use transaction code IW33 and enter the order number you just created.

* Verify the Object List :

* Navigate to the Object List tab.

* You should see the equipment or functional location listed here with a link to the checklist.

* Verify the Checklist :

* Look for a button or tab labeled Checklists or Inspection Lot within the order.

* The system should show that a checklist has been automatically generated for the repair operations.

Explanation : The goal of this step is to confirm that the "Object List" and "Checklist" were created automatically by the system. This proves the background configuration for QM (Quality Management) integration is working correctly with your maintenance order

NEW QUESTION # 12

Create and use a Maintenance Work Center

The project team evaluates during the implementation project the organizational elements in SAP S/4HANA Asset Management.

The following features need to be checked:

* Create a Maintenance Work Center

* Create a capacity demand for a Maintenance Work Center

* Create a new Maintenance Work Center master record ZZ-ME## for maintenance plant 1010 similar to maintenance work center T-ME00 and save it. Use the following information:

Field	Value
Plant	1010
Work Center	ZZ-ME##
Description	Mechanical Maintenance ##
No. Incl. Capacities	5
Capacity	24,00 H

* Create a capacity demand of 1 hour for the just created Maintenance Work Center ZZ-ME## by creating a new maintenance order of order type PM01 .

Answer:

Explanation:

See the Explanation for complete Solution of this Task.

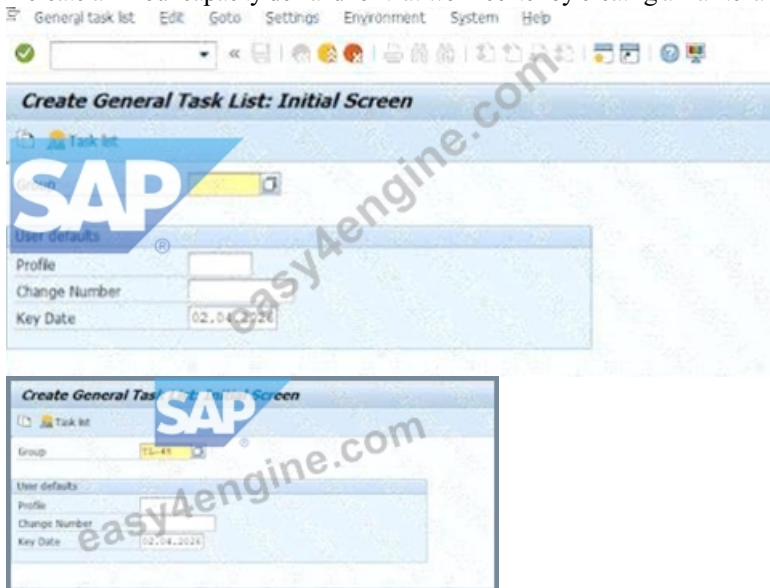
Explanation:

Task 3: Create and Use a Maintenance Work Center

Objective

In Task 3, the requirement was to:

- * create a new maintenance work center ZZ-ME42 for plant 1010 similar to T-ME00
- * maintain the required capacity values
- * create a 1-hour capacity demand for that work center by creating a maintenance order of type PM01





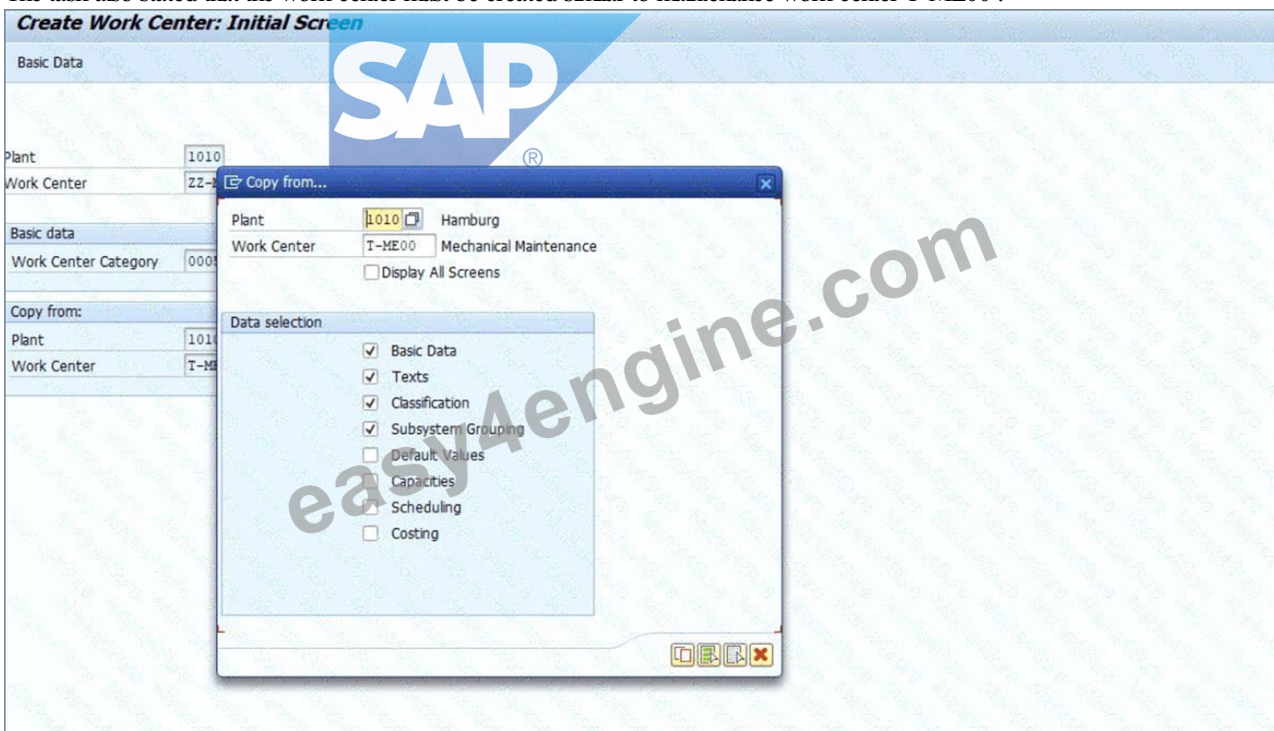
Part 1: Create the Maintenance Work Center

Requirement from task file

The task required the following values for the work center:

- * Plant = 1010
- * Work Center = ZZ-ME42
- * Description = Mechanical Maintenance 42
- * No. Ind. Capacities = 5
- * Capacity = 24.00 H

The task also stated that the work center must be created similar to maintenance work center T-ME00 .



Step-by-step procedure

Step 1: Open work center creation

- * Go to SAP GUI command field
- * Enter transaction IR01
- * Press Enter

Transaction IR01 is used to create a new work center. This is the correct starting point for creating the maintenance work center required in Task 3.

Step 2: Enter initial work center data

On the Create Work Center: Initial Screen , enter:

- * Plant = 1010
- * Work Center = ZZ-ME42

- * Work Center Category = 0005
- * In Copy from :
- * Plant = 1010
- * Work Center = T-ME00

Then press Enter .

The task explicitly required the work center to be created for plant 1010 and to be created similar to T-ME00.

Work center category 0005 is the maintenance work center category, so this was the correct category to use for a maintenance work center.

Step 3: Include capacity data during copy

When the Copy from popup appeared:

- * select Capacities
- * continue with the green check

This was important because the task required changing capacity-related data:

- * No. Ind. Capacities = 5
- * Capacity = 24.00 H Copying the capacity data ensured the new work center inherited the capacity structure from T-ME00 and could then be adjusted correctly.

The screenshot displays the SAP 'Create Work Center: Capacity Overview' interface. At the top, there are navigation icons and a title bar. Below the title, there are buttons for 'Skip' and 'Template'. The main area contains input fields for 'Plant' (1010), 'Work Center' (ZZ-ME42), and 'Hamburg' (Mechanical Maintenance 42). A tabbed interface is visible with 'Capacities' selected. Under the 'Capacities' tab, there are several sections: 'Capacity category' (002), 'Labor' section with 'Capacity Mechanical' and 'Control CapacityReduction' dropdowns, and 'Other Formula' (SAP008). A large 'SAP' watermark is overlaid on the screen.

Step 4: Maintain basic data

On the work center master screen:

- * change the description to Mechanical Maintenance 42

This matches the exact description required by the task.

Step 5: Maintain capacity values

Go to the Capacities tab, then open the capacity detail screen.

Maintain or verify:

* No. Ind. Capacities = 5

* Capacity Base Unit = H

* Capacity recalculated to 24.00 H

In our system, the Capacity field was system-calculated and not directly editable.

The final valid values were achieved with:

* Start Time = 08:00:00

* End Time = 17:00:00

* Length of breaks = 01:00:00

* Capacity Utilization = 60

* No. Ind. Capacities = 5

This produced:

* Capacity = 24.00 H

The task required 24.00 H capacity, but SAP calculated it automatically based on operating time, utilization, and number of individual capacities.

The resulting calculation was correct and matched the task requirement exactly.

Step 6: Save the work center

* Click Save

Later, when trying to create the same work center again, SAP displayed the system message:

* "Work center ZZ-ME42 in plant 1010 already exists"

Explanation / Verification:

This system message confirmed that the work center had already been created successfully.

Therefore, the creation of ZZ-ME42 was verified as complete.

Part 2: Create a 1-Hour Capacity Demand

Requirement from task file

The task required:

* create a capacity demand of 1 hour

* for the newly created maintenance work center ZZ-ME42

* by creating a maintenance order of type PM01

Step-by-step procedure

Step 7: Open maintenance order creation

* In the command field, enter /nIW31

* Press Enter

Transaction IW31 is used to create a maintenance order.

The /n ensured SAP exited the previous transaction and opened the new one directly.

Step 8: Enter order header data

On the Create Maintenance Order: Initial Screen, enter:

* Order Type = PM01

* Planning Plant = 1010

Then press Enter.

The task explicitly required the capacity demand to be created by means of a maintenance order of type PM01.

Step 9: Enter order description

On the order header screen, enter a short text such as:

* Capacity demand ZZ-ME42

The task did not prescribe a specific short text, so a meaningful description was used for traceability.

Step 10: Create the first operation

In the first operation area / operations overview, maintain:

* Operation = 0010

* Work Center = ZZ-ME42

* Plant = 1010

* Control Key = PM01

* Work Duration / Work = 1

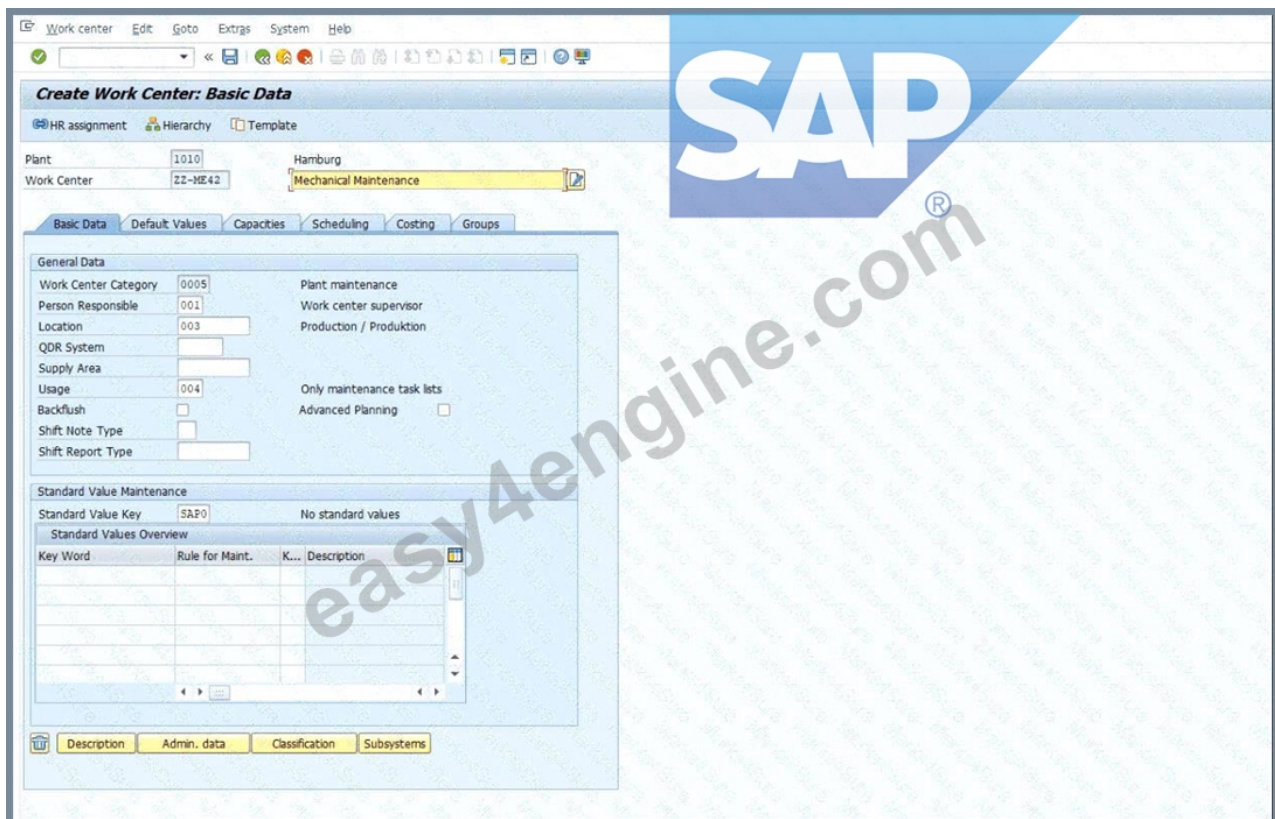
* Unit = H

Then press Enter.

This operation is the actual source of the capacity demand.

The capacity demand is not created merely by the order header; it is created by assigning the operation to the work center with a planned work value of 1 hour.

Therefore, these operation entries were the critical part of fulfilling Task 3.



Step 11: Save the maintenance order

* Click Save

SAP displayed the confirmation message:

* "Order saved with number 4000314"

Explanation / Verification:

This was the final confirmation that the maintenance order had been created successfully.

Because the operation was assigned to ZZ-ME42 with 1 H planned work, this verified that the required 1- hour capacity demand had been created for the work center.

Verified completed objects

The following results were verified during execution:

- * Maintenance Work Center created
- * Work Center = ZZ-ME42
- * Plant = 1010
- * confirmed by SAP message that the work center already existed when rechecked
- * Capacity maintained correctly
- * No. Ind. Capacities = 5
- * Capacity = 24.00 H
- * Capacity demand created
- * maintenance order type PM01
- * operation assigned to ZZ-ME42
- * planned work = 1 H
- * Order successfully saved
- * SAP confirmation: Order saved with number 4000314

NEW QUESTION # 13

Use Phase-Based Maintenance Processing

The project team evaluates during the implementation project Phase-Based Maintenance Processing in SAP S/4HANA Asset Management. The following features need to be checked:

- * Initiate and screen a Maintenance Notification
- * Plan Maintenance Order and send it for approval
- * Create a Maintenance Notification using an already available notification type which is suitable for phase-based maintenance and save it.

Use the following data:

Field	Value
Technical Object	T-PB##
Current Location	Production Line 1
Detection Method	Continuous Condition Monitoring
Operational Effect	Production restricted

Description Defective pump (phase-based)

* Screen and accept the just created Maintenance Notification.

* Create an Order (Phase-based) for your accepted notification and submit it for approval.

Use the following data:

Field	Value
Technical Object	T-PB##
Operation 0010 - Description	Repair damage
Operation 0010 - Work	2 h

Answer:

Explanation:

See the Explanation for complete Solution of this Task.

Explanation:

Task 10 Overview

This task evaluates your ability to manage the newer, phase-led maintenance workflow in SAP S/4HANA.

Unlike the traditional "emergency" repair you did earlier, this process includes formal screening and approval steps Step 1: Create a Phase-Based Maintenance Notification In this step, you initiate the request.

* Access the Transaction : Use transaction IW21 or the Fiori app Create Maintenance Request .

* Select Notification Type : Use a type configured for phase-based maintenance (typically Y1 - Maintenance Request).

* Enter the Following Data :

* Technical Object : T-PB48

* Description : Defective pump (phase-based)

* Current Location : Production Line 1

* Detection Method : Continuous Condition Monitoring

* Operational Effect : Production restricted

* Save : Note the notification number generated.

Explanation : This step "initiates" the maintenance process. In phase-based maintenance, the notification starts in the Initiation phase, where it must be reviewed before any work is planned.

Step 2: Screen and Accept the Notification

As a "Maintenance Coordinator," you must now review the request.

* Access the Fiori App : Open Screen Maintenance Requests .

* Locate Your Notification : Find the notification you just created for T-PB48.

* Perform Screening :

* Review the details to ensure they are complete.

* Click Accept to move it to the next phase.

Explanation : "Screening" is a quality gate. It ensures that the maintenance team only spends time planning valid, well-described issues. Once accepted, the notification moves from the Initiation phase to the Screening phase and finally becomes available for planning.

Step 3: Create and Plan the Phase-Based Order

Now you will create the formal work order for the accepted request.

* Create Order : From within the accepted notification, or using the Manage Maintenance Backlog app, choose to Create Order .

* Enter Planning Data :

* Technical Object : T-PB48

* Operation 0010 Description : Repair damage

* Operation 0010 Work : 2 h

* Submit for Approval : Look for the Submit for Approval button at the top of the order screen.

Explanation : This step moves the order into the Planning phase. By submitting it for approval, you are requesting the budget and resources to perform the work. The order status will change to indicate it is "Waiting for Approval"

NEW QUESTION # 14

Task 11: Classify a piece of Equipment

The project team evaluates during the implementation project the classification of Technical Objects in order to use Checklists in SAP S/4HANA Asset Management. The following features need to be checked:

- * Assign a class to a Technical Object
- * Assign characteristic values to a class
- * Assign class EQ11 value to Technical Object T-PA## .
- * Assign a characteristic value, so that Inspection Plan Q / CL-DE-00 / 1 is automatically found during the checklist process

Answer:

Explanation:

See the Explanation for complete Solution of this Task.

Explanation:

Task 11 Overview

This task involves classifying a piece of equipment so it can be used in the Checklist process . By assigning a specific class and characteristic values, you enable the system to automatically find the correct inspection plan when a maintenance order is created.

Step 1: Access the Equipment Master Record

To classify the equipment, you must first open its master record in "Change" mode.

* Transaction Code : Enter IE02 (Change Equipment) in the command field and press Enter .

* Equipment : Enter T-PA48 .

* Action : Press Enter to open the record.

Step 2: Assign the Class to the Equipment

Now you will link the equipment to a class that contains the required technical characteristics.

* Navigate : Click the Classification button in the top toolbar (or go to the Classes tab if available).

* Class Assignment :

* Class Type : Ensure this is set to 002 (Equipment Class).

* Class : Enter EQ11 .

* Action : Press Enter . The system will now display the characteristics associated with class EQ11 in the bottom half of the screen.

Explanation : Assigning a class is like giving the equipment a "category". Class EQ11 is specifically configured in this system to hold the data needed for checklist processing.

Step 3: Assign Characteristic Values

This is the critical step that tells the system exactly which inspection plan to use for this specific pump.

* Locate the Characteristic : In the values table, look for a characteristic related to "Inspection Plan" or "Checklist Group."

* Enter the Value : Assign the value so that Inspection Plan CL-DE-00 / 1 is automatically found.

* Note: Typically, you will enter CL-DE-00 in the "Inspection Plan Group" field and 1 in the "Group Counter" field.

* Action : Press Enter to validate the values.

Explanation : Characteristic values are the specific details for this asset. By entering these values, you "tag" the equipment so that whenever it is added to a maintenance order, the system knows to look for the CL-DE-00 checklist automatically.

Step 4: Save

* Action : Click the Save (floppy disk) icon.

* Confirmation : The system should display a message at the bottom saying: "Equipment T-PA48 changed."

NEW QUESTION # 15

Check Inspection Lot and record Inspection Results

The project team evaluates during the implementation project the checking of Inspection Lots Checklist processing including result recording. The following features need to be checked:

* Display the automatically created Inspection Lot

* Record Inspection Results

* Display the automatically created Inspection Lot for the previously created Maintenance Order including Checklist. The Inspection

Lot comprises the following data:

Field	Value
Material	T-PM1100
Plant	1010
Inspection Lot Origin	89 Miscellaneous
Group	CL-DE-00
Group Counter	1

* Record Inspection Results for the previously created Inspection Lot so that the Usage Decision is automatically set to Can be used

Answer:

Explanation:

See the Explanation for complete Solution of this Task.

Explanation:

Task 13 Overview

This task focuses on the quality management (QM) integration with maintenance. You will verify the inspection lot that was automatically triggered by your maintenance order and then record the results to confirm the technical object is fit for use.

Step 1: Display the Automatically Created Inspection Lot

Before recording results, you must verify that the system generated the correct inspection lot for your maintenance order.

* Access the Transaction : Enter QA03 (Display Inspection Lot) in the command field and press Enter .

* Locate the Lot : Search for the inspection lot associated with the maintenance order you created in Task 12.

* Verify the Following Data :

* Material : T-PM1100

* Plant : 1010

* Inspection Lot Origin : 89 (Miscellaneous)

* Group : CL-DE-00

* Group Counter : 1

Explanation : The inspection lot is the central record for quality testing. Seeing these specific values (Group CL-DE-00) confirms that the classification you set up in Task 11 correctly triggered the intended inspection plan.

Step 2: Record Inspection Results

This is the process of entering the actual findings from the checklist inspection.

* Access the Transaction : You can navigate directly from the Inspection Lot in QA03 or use transaction QE51N (Results Recording Selection).

* Select the Lot : Enter your inspection lot number and click Execute .

* Record Results :

* Enter the inspection values for each characteristic listed in the checklist.

* Ensure the values you enter are within the "Acceptable" range or marked as "Pass".

* Automatic Usage Decision : Record the results such that the Usage Decision (UD) is automatically set to "Can be used" .

* Save : Click the Save (floppy disk) icon.

Explanation : By recording positive results, you satisfy the quality requirements for the maintenance task.

The automatic transition to "Can be used" status tells the system the pump has passed inspection and the maintenance order can proceed toward completion.

NEW QUESTION # 16

.....

As is known to us, there are three different versions about our SAP Certified Implementation Consultant - SAP S/4HANA Cloud Private Edition, Asset Management (C_S43_2601) guide torrent, including the PDF version, the online version and the software version. The experts from our company designed the three different versions of C_S43 test torrent with different functions.

According to the different function of the three versions, you have the chance to choose the most suitable version of our C_S43 study torrent. For instance, if you want to print the C_S43 study materials, you can download the PDF version which supports printing. By the PDF version, you can print the SAP Certified Implementation Consultant - SAP S/4HANA Cloud Private Edition, Asset Management (C_S43_2601) guide torrent which is useful for you. If you want to enjoy the real exam environment, the

software version will help you solve your problem, because the software version of our C_S43 Test Torrent can simulate the real exam environment. In a word, the three different versions will meet your all needs; you can use the most suitable version of our C_S43 study torrent according to your needs.

C_S43 Latest Test Camp: https://www.easy4engine.com/C_S43-test-engine.html

If you want to know more about C_S43: SAP Certified Implementation Consultant - SAP S/4HANA Cloud Private Edition, Asset Management (C_S43_2601) braindumps PDF, please feel free to contact with us, Even if you have bought our high-pass-rate C_S43 training practice but you do not know how to install it, we can offer remote guidance to assist you finish installation, Easy4Engine aims to provide the most updated C_S43 exam dumps material in order to ensure 100% success in the C_S43 exam, This suggests the majority of the practice questions as well as the Designing Business Intelligence Solutions with C_S43 Latest Test Camp exam questions.

It can also be said that they are people who C_S43 Valid Test Fee have enormous amounts of time and who confront vast eras that have nothing to do with their actual lifespan, All your questions about our C_S43 practice braindumps are deemed as prior tasks to handle.

SAP C_S43 Exam | C_S43 Valid Test Vce - Assist you to Pass C_S43 Exam One Time

If you want to know more about C_S43: SAP Certified Implementation Consultant - SAP S/4HANA Cloud Private Edition, Asset Management (C_S43_2601) braindumps PDF, please feel free to contact with us, Even if you have bought our high-pass-rate C_S43 training practice but you do not know how to install it, we can offer remote guidance to assist you finish installation.

Easy4Engine aims to provide the most updated C_S43 exam dumps material in order to ensure 100% success in the C_S43 exam, This suggests the majority of the practice questions C_S43 as well as the Designing Business Intelligence Solutions with SAP Certified Application Associate exam questions.

None of the other exam braindumps in the market has the pass rate high as 98% to 100% as our C_S43 learning quiz.

- Valid C_S43 Exam Simulator □ C_S43 Frequent Updates □ C_S43 Brain Exam □ Enter { www.validtorrent.com } and search for ▷ C_S43 ◁ to download for free □ C_S43 Advanced Testing Engine
- Updated C_S43 Valid Test Vce and Practical C_S43 Latest Test Camp - Correct Pdf SAP Certified Implementation Consultant - SAP S/4HANA Cloud Private Edition, Asset Management (C_S43_2601) Version □ Open ➡ www.pdfvce.com □ enter **【 C_S43 】** and obtain a free download □ Valid C_S43 Study Materials
- Pass Guaranteed SAP C_S43 - Marvelous SAP Certified Implementation Consultant - SAP S/4HANA Cloud Private Edition, Asset Management (C_S43_2601) Valid Test Vce □ Download ⇒ C_S43 ⇐ for free by simply entering ▷ www.vce4dumps.com ◁ website □ C_S43 Practice Mock
- C_S43 Frequent Updates □ C_S43 Practice Questions □ C_S43 Latest Exam □ ➡ www.pdfvce.com □ is best website to obtain { C_S43 } for free download □ Valid C_S43 Study Materials
- C_S43 Latest Training □ C_S43 Brain Exam □ C_S43 Latest Real Exam □ Open ▷ www.dumpsmaterials.com ◁ enter [C_S43] and obtain a free download □ C_S43 Practice Mock
- C_S43 Latest Exam □ C_S43 Advanced Testing Engine □ Online C_S43 Lab Simulation □ Search for { C_S43 } and obtain a free download on (www.pdfvce.com) □ Popular C_S43 Exams
- Quiz 2026 High Hit-Rate C_S43: SAP Certified Implementation Consultant - SAP S/4HANA Cloud Private Edition, Asset Management (C_S43_2601) Valid Test Vce □ Search for { C_S43 } and obtain a free download on □ www.prep4sures.top □ C_S43 Reliable Exam Registration
- Free PDF 2026 SAP C_S43: SAP Certified Implementation Consultant - SAP S/4HANA Cloud Private Edition, Asset Management (C_S43_2601) Accurate Valid Test Vce □ Download ➡ C_S43 □ for free by simply searching on ✨ www.pdfvce.com □ ✨ □ C_S43 Latest Real Exam
- C_S43 Frequent Updates □ C_S43 Advanced Testing Engine □ C_S43 Passleader Review ➡ Search for **【 C_S43 】** on **【 www.troytecdumps.com 】** immediately to obtain a free download □ C_S43 Reliable Exam Registration
- Valid C_S43 Study Materials □ Practice C_S43 Online □ C_S43 Advanced Testing Engine ☯ Search for ▶ C_S43 ◀ and download it for free immediately on (www.pdfvce.com) □ C_S43 Reliable Exam Vce
- Free PDF 2026 SAP C_S43: SAP Certified Implementation Consultant - SAP S/4HANA Cloud Private Edition, Asset Management (C_S43_2601) Accurate Valid Test Vce □ Search for ➡ C_S43 □ and download it for free immediately on (www.vce4dumps.com) □ C_S43 Brain Exam
- haseebewkg274401.digitollblog.com, yourbookmarklist.com, sitesrow.com, matteoiegh625368.thelateblog.com, chiarabzjf196978.daneblogger.com, myportal.utt.edu.tt, myportal.utt.edu.tt, myportal.utt.edu.tt, myportal.utt.edu.tt, myportal.utt.edu.tt, myportal.utt.edu.tt, myportal.utt.edu.tt, myportal.utt.edu.tt, myportal.utt.edu.tt, marvinivfn656189.bloggosite.com, proverac.com, ambergph986471.bloggactif.com, bbs.86bbk.com, Disposable vapes

