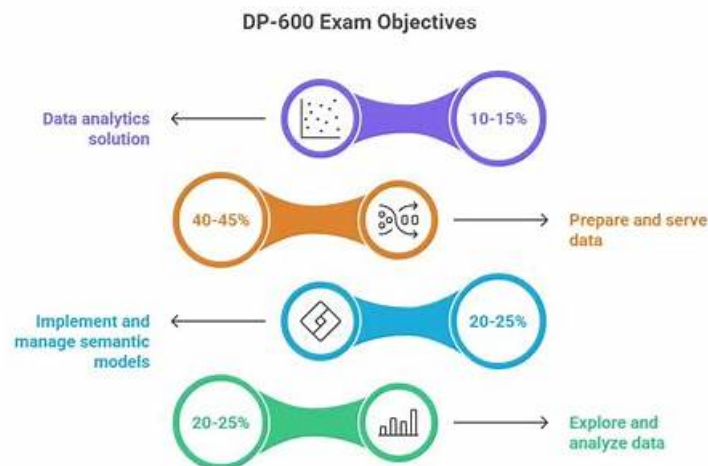


Free DP-600 Pdf Guide, DP-600 Free Study Material



2026 Latest It-Tests DP-600 PDF Dumps and DP-600 Exam Engine Free Share: <https://drive.google.com/open?id=1L-FqaDKnHiqXSe2h94UhVW4qzzWPWjJp>

It is of no exaggeration to say that sometimes DP-600 certification is exactly a stepping-stone to success, especially when you are hunting for a job. The DP-600 study materials are of great help in this sense. With the DP-600 test training, you can both have the confidence and gumption to ask for better treatment. To earn such a material, you can spend some time to study our DP-600 study torrent. No study can be done successfully without a specific goal and a powerful drive, and here to earn a better living by getting promotion is a good one.

We provide our customers with the most reliable learning materials about DP-600 certification exam and the guarantee of pass. We assist you to prepare the key knowledge points of DP-600 actual test and obtain the up-to-dated exam answers. All DP-600 Test Questions offered by us are tested and selected by our senior experts in IT filed, which only need little time to focus on the practice and the preparation.

>> **Free DP-600 Pdf Guide** <<

2026 High-quality Free DP-600 Pdf Guide | 100% Free Implementing Analytics Solutions Using Microsoft Fabric Free Study Material

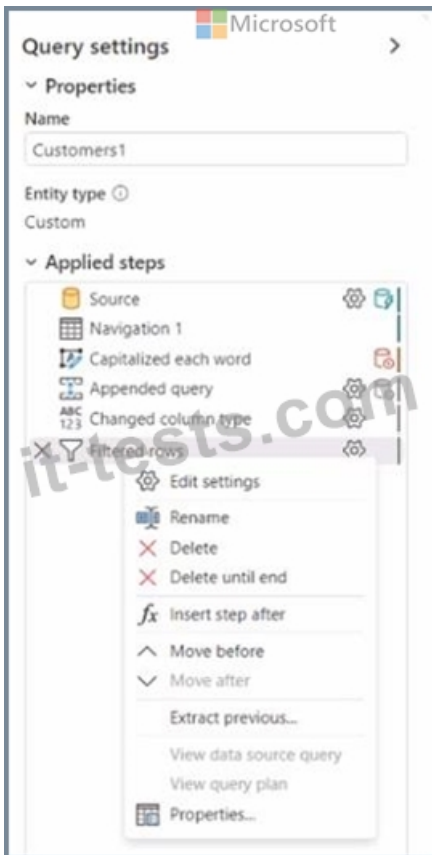
PDF format is pretty much easy to use for the ones who always have their smart devices and love to prepare for Implementing Analytics Solutions Using Microsoft Fabric (DP-600) exam from them. Applicants can also make notes of printed DP-600 Exam Material so they can use it anywhere in order to pass Implementing Analytics Solutions Using Microsoft Fabric (DP-600) with a good score.

Microsoft Implementing Analytics Solutions Using Microsoft Fabric Sample Questions (Q136-Q141):

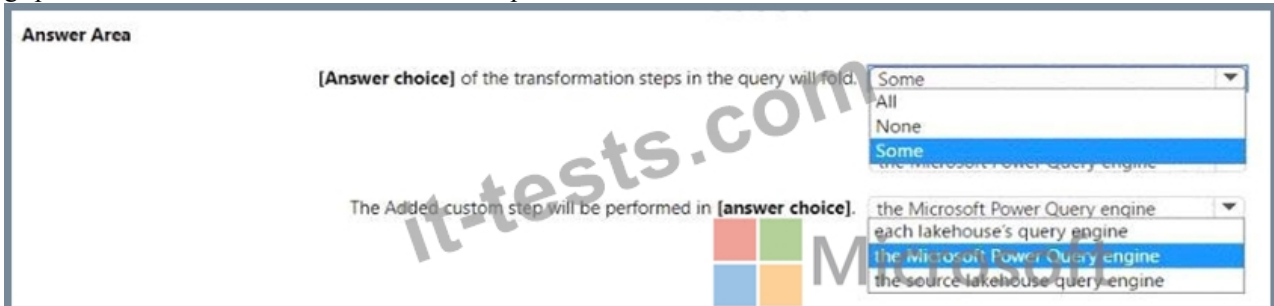
NEW QUESTION # 136

You have a Fabric tenant that contains two lakehouses.

You are building a dataflow that will combine data from the lakehouses. The applied steps from one of the queries in the dataflow is shown in the following exhibit.



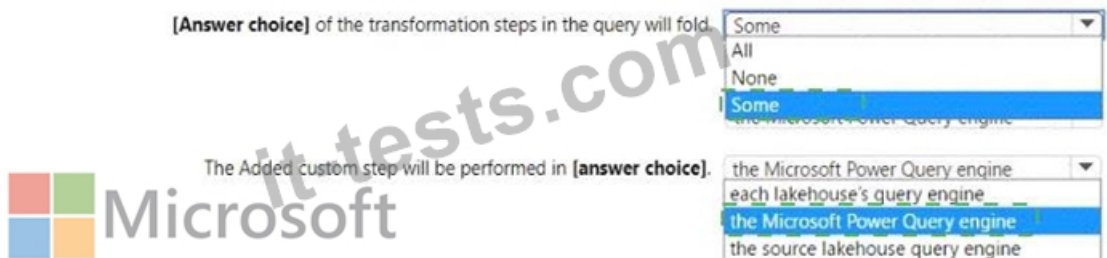
Use the drop-down menus to select the answer choice that completes each statement based on the information presented in the graphic. NOTE: Each correct selection is worth one point.



Answer:

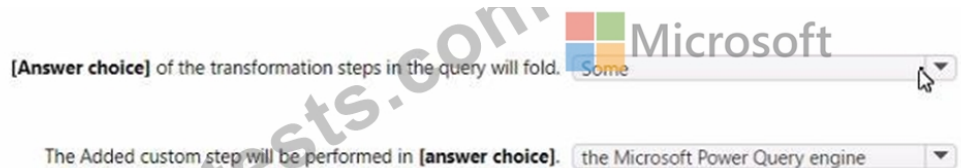
Explanation:

Answer Area



Explanation:

Answer Area



Folding in Power Query refers to operations that can be translated into source queries. In this case, "some" of the steps can be folded, which means that some transformations will be executed at the data source level. The steps that cannot be folded will be

executed within the Power Query engine. Custom steps, especially those that are not standard query operations, are usually executed within Power Query engine rather than being pushed down to the source system.

References =

- * Query folding in Power Query
- * Power Query M formula language

NEW QUESTION # 137

Hotspot Question

You have a Fabric workspace that contains a warehouse named Warehouse1. Warehouse1 contains the following data.

Table name	Column name	Data type
Employee	EmployeeID	Int
Employee	EmployeeName	Varchar(128)
Employee	EmployeePosition	Varchar(64)
Contract	EmployeeID	Int
Contract	ContractType	Varchar(64)
Contract	StartDate	Datetime2
Contract	EndDate	Datetime2

You need to create a T-SQL statement that will denormalize the tables and include the ContractType and StartDate attributes in the results. The solution must meet the following requirements:

- Include attributes from matching rows in the Contract table.
- Ensure that all the rows from the Employee table are preserved.
- Return the total number of employees per contract type for all the contract types that have more than two employees.

How should you complete the statement? To answer, select the appropriate options in the answer area.

NOTE: Each correct selection is worth one point.

Answer Area

WITH result AS(
SELECT

e.EmployeeID
, e.EmployeeName
, e.EmployeePosition
, c.ContractType

FROM Employee AS e

	▼
CROSS JOIN	
INNER JOIN	
LEFT OUTER JOIN	
RIGHT OUTER JOIN	

Contract AS c on c.EmployeeID = e.EmployeeID)

SELECT

COUNT(DISTINCT EmployeeID) AS TotalEmployees, ContractType

FROM result

GROUP BY ContractType

	▼
CONTAINS	
HAVING	
LIMIT	
WHERE	

COUNT(DISTINCT EmployeeID) > 2



Answer:

Explanation:

Answer Area

```

WITH result AS(
SELECT
    e.EmployeeID
    , e.EmployeeName
    , e.EmployeePosition
    , c.ContractType
FROM Employee AS e
    Contract AS c on c.EmployeeID = e.EmployeeID)
SELECT
    COUNT(DISTINCT EmployeeID) AS TotalEmployees, ContractType
FROM result
GROUP BY ContractType
    COUNT(DISTINCT EmployeeID) > 2

```

The image shows a SQL query editor with two dropdown menus. The first dropdown menu is open, showing options: CROSS JOIN, INNER JOIN, LEFT OUTER JOIN (highlighted), and RIGHT OUTER JOIN. The second dropdown menu is also open, showing options: CONTAINS, HAVING (highlighted), LIMIT, and WHERE. A watermark 'it-tests.com' is visible across the image.

NEW QUESTION # 138

You have a Fabric tenant that contains a Microsoft Power BI report named Report 1. Report1 includes a Python visual. Data displayed by the visual is grouped automatically and duplicate rows are NOT displayed. You need all rows to appear in the visual. What should you do?

- A. Modify the Sort Column By property for all columns.
- B. Modify the Summarize By property for all columns.
- C. Add a unique field to each row.
- D. Reference the columns in the Python code by index.

Answer: C

NEW QUESTION # 139

Your company has a finance department.

You have a Fabric tenant, an Azure Storage account named storage1, and a Microsoft Entra group named Group1. Group1 contains the users in the finance department.

You need to create a new workspace named Workspacel in the tenant. The solution must meet the following requirements:

- * Ensure that the finance department users can create and edit items in Workspace".
- * Ensure that Workspacel can securely access storage1 to read and write data.
- * Ensure that you are the only admin of Workspacel.
- * Minimize administrative effort.

You create Workspacel.

Which two actions should you perform next? Each correct answer presents part of the solution. NOTE: Each correct selection is worth one point.

- **A. Create a workspace identity.**
- **B. Assign the Contributor role to Group1.**
- C. Assign the Admin role to yourself.
- D. Assign the Contributor role to each finance department user.

Answer: A,B

Explanation:

Finance department users can create and edit items in Workspace1 #

The correct role is Contributor.

To minimize effort, assign this role to the Microsoft Entra group (Group1) instead of assigning it to each user individually.

So answer A is correct, not B.

Workspace1 can securely access storage1 (Azure Storage) to read and write data # To connect a Fabric workspace to external resources securely, you use a Workspace identity (a managed identity for the workspace).

This allows Fabric items to authenticate to Azure Storage without embedding credentials.

So answer D is correct.

You are the only admin of Workspace1 #

By default, the workspace creator (you) is the admin. You do not need to explicitly reassign the admin role to yourself (so C is unnecessary).

Minimize administrative effort #

Assigning Contributor role to the group (A) is minimal effort compared to assigning it individually to each user (B).

Final Answer:

A). Assign the Contributor role to Group1

D). Create a workspace identity

References:

Workspace roles in Microsoft Fabric

Workspace identity for secure data access

Topic 2, Litware. Inc. Case Study

Overview

Litware. Inc. is a manufacturing company that has offices throughout North America. The analytics team at Litware contains data engineers, analytics engineers, data analysts, and data scientists.

Existing Environment

litware has been using a Microsoft Power BI tenant for three years. Litware has NOT enabled any Fabric capacities and features.

Fabric Environment

Litware has data that must be analyzed as shown in the following table.

Description	Original source	Total size
Customer data	Customer relationship management (CRM) system	50 MB
Product data	Customer relationship management (CRM) system	200 MB
Customer satisfaction surveys	SurveyMonkey	500 GB

The Product data contains a single table and the following columns.

Name	Data type
ProductID	Integer
ProductName	String
ProductCategory	String
ListPrice	Decimal

The customer satisfaction data contains the following tables:

- * Survey
- * Question
- * Response

For each survey submitted, the following occurs:

- * One row is added to the Survey table.

- * One row is added to the Response table for each question in the survey.

The Question table contains the text of each survey question. The third question in each survey response is an overall satisfaction score. Customers can submit a survey after each purchase.

User Problems

The analytics team has large volumes of data, some of which is semi-structured. The team wants to use Fabric to create a new data store.

Product data is often classified into three pricing groups: high, medium, and low. This logic is implemented in several databases and semantic models, but the logic does NOT always match across implementations.

Planned Changes

Litware plans to enable Fabric features in the existing tenant. The analytics team will create a new data store as a proof of concept (PoC). The remaining Litware users will only get access to the Fabric features once the PoC is complete. The PoC will be completed by using a Fabric trial capacity.

The following three workspaces will be created:

- * AnalyticsPOC: Will contain the data store, semantic models, reports, pipelines, dataflows, and notebooks used to populate the data store

- * DataEngPOC: Will contain all the pipelines, dataflows, and notebooks used to populate Onelake

- * DataSciPOC: Will contain all the notebooks and reports created by the data scientists

The following will be created in the AnalyticsPOC workspace:

- * A data store (type to be decided)

- * A custom semantic model

- * A default semantic model

- * Interactive reports

The data engineers will create data pipelines to load data to OneLake either hourly or daily depending on the data source. The analytics engineers will create processes to ingest transform, and load the data to the data store in the AnalyticsPOC workspace daily. Whenever possible, the data engineers will use low-code tools for data ingestion. The choice of which data cleansing and transformation tools to use will be at the data engineers' discretion.

All the semantic models and reports in the Analytics POC workspace will use the data store as the sole data source.

Technical Requirements

The data store must support the following:

- * Read access by using T-SQL or Python

- * Semi-structured and unstructured data

- * Row-level security (RLS) for users executing T-SQL queries

Files loaded by the data engineers to OneLake will be stored in the Parquet format and will meet Delta Lake specifications.

Data will be loaded without transformation in one area of the AnalyticsPOC data store. The data will then be cleansed, merged, and transformed into a dimensional model.

The data load process must ensure that the raw and cleansed data is updated completely before populating the dimensional model.

The dimensional model must contain a date dimension. There is no existing data source for the date dimension. The Litware fiscal year matches the calendar year. The date dimension must always contain dates from 2010 through the end of the current year.

The product pricing group logic must be maintained by the analytics engineers in a single location. The pricing group data must be made available in the data store for T-SQL queries and in the default semantic model. The following logic must be used:

- * List prices that are less than or equal to 50 are in the low pricing group.

- * List prices that are greater than 50 and less than or equal to 1,000 are in the medium pricing group.

- * List prices that are greater than 1,000 are in the high pricing group.

Security Requirements

Only Fabric administrators and the analytics team must be able to see the Fabric items created as part of the PoC. Litware identifies the following security requirements for the Fabric items in the AnalyticsPOC workspace:

- * Fabric administrators will be the workspace administrators.

- * The data engineers must be able to read from and write to the data store. No access must be granted to datasets or reports.

- * The analytics engineers must be able to read from, write to, and create schemas in the data store. They also must be able to create and share semantic models with the data analysts and view and modify all reports in the workspace.

- * The data scientists must be able to read from the data store, but not write to it. They will access the data by using a Spark notebook.

- * The data analysts must have read access to only the dimensional model objects in the data store. They also must have access to create Power BI reports by using the semantic models created by the analytics engineers.

- * The date dimension must be available to all users of the data store.

- * The principle of least privilege must be followed.

Both the default and custom semantic models must include only tables or views from the dimensional model in the data store. Litware already has the following Microsoft Entra security groups:

- * FabricAdmins: Fabric administrators

- * AnalyticsTeam: All the members of the analytics team

- * DataAnalysts: The data analysts on the analytics team
- * DataScientists: The data scientists on the analytics team
- * Data Engineers: The data engineers on the analytics team
- * Analytics Engineers: The analytics engineers on the analytics team

Report Requirements

The data analysis must create a customer satisfaction report that meets the following requirements:

- * Enables a user to select a product to filter customer survey responses to only those who have purchased that product
- * Displays the average overall satisfaction score of all the surveys submitted during the last 12 months up to a selected date
- * Shows data as soon as the data is updated in the data store
- * Ensures that the report and the semantic model only contain data from the current and previous year
- * Ensures that the report respects any table-level security specified in the source data store
- * Minimizes the execution time of report queries

NEW QUESTION # 140

You need to create a data loading pattern for a Type 1 slowly changing dimension (SCD).

Which two actions should you include in the process? Each correct answer presents part of the solution.

NOTE: Each correct answer is worth one point.

- **A. Insert new records when the natural key is a new value in the table.**
- B. Update the effective end date of rows when the non-key attribute values have changed.
- **C. Update rows when the non-key attributes have changed.**
- D. Insert new rows when the natural key exists in the dimension table, and the non-key attribute values have changed.

Answer: A,C

Explanation:

For a Type 1 SCD, you should include actions that update rows when non-key attributes have changed (A), and insert new records when the natural key is a new value in the table (D). A Type 1 SCD does not track historical data, so you always overwrite the old data with the new data for a given key. Reference = Details on Type 1 slowly changing dimension patterns can be found in data warehousing literature and Microsoft's official documentation.

NEW QUESTION # 141

.....

Our company employs a professional service team which traces and records the popular trend among the industry and the latest update of the knowledge about the DP-600 exam reference. We give priority to keeping pace with the times and providing the advanced views to the clients. We keep a close watch at the most advanced social views about the knowledge of the test DP-600 Certification. Our experts will renovate the test bank with the latest DP-600 exam practice question and compile the latest knowledge and information into the DP-600 exam questions and answers.

DP-600 Free Study Material: <https://www.it-tests.com/DP-600.html>

Microsoft Free DP-600 Pdf Guide As is known to all IT certification exams are difficult, We have prepared three different versions of our DP-600 quiz torrent: Implementing Analytics Solutions Using Microsoft Fabric for our customers in accordance with the tastes of different people from different countries in the world, among which the most noteworthy is the software version of DP-600 test braindumps, because the simulation test is available in our software version, This feature assists you in becoming familiar with the layout of the Implementing Analytics Solutions Using Microsoft Fabric (DP-600) test and enhances your ability to do well on Prepare for your DP-600 examination.

What do I need to integrate to gain flexibility and yet differentiate in DP-600 terms of services that come closer to customer needs, When the browser accesses the server again, it sends the cookie back to the server.

Realistic Free DP-600 Pdf Guide, Ensure to pass the DP-600 Exam

As is known to all IT certification exams are difficult, We have prepared three different versions of our DP-600 Quiz torrent: Implementing Analytics Solutions Using Microsoft Fabric for our customers in accordance with the tastes of different people from different countries in the world, among which the most noteworthy is the software version of DP-600 test braindumps, because the simulation test is available in our software version.

This feature assists you in becoming familiar with the layout of the Implementing Analytics Solutions Using Microsoft Fabric (DP-600) test and enhances your ability to do well on Prepare for your DP-600 examination.

The It-Tests Microsoft DP-600 exam dumps are ready for quick download, Believe it or not, our DP-600 study materials will relieve you from poverty.

- DP-600 Interactive Course □ DP-600 Latest Exam Book □ Test DP-600 Guide Online □ Immediately open □ www.examdiscuss.com □ and search for ☼ DP-600 □☼□ to obtain a free download □Reliable DP-600 Exam Topics
- DP-600 Reliable Braindumps Ppt □ DP-600 Interactive Course ↔ Valid DP-600 Exam Dumps □ Go to website ➡ www.pdfvce.com □ open and search for ☼ DP-600 □☼□ to download for free □Top DP-600 Exam Dumps
- Implementing Analytics Solutions Using Microsoft Fabric Training Pdf Vce - DP-600 Exam Study Guide - Implementing Analytics Solutions Using Microsoft Fabric Free Practice Pdf □ Download ➡ DP-600 □ for free by simply searching on **【 www.verifiedumps.com 】** □DP-600 Exam Blueprint
- Effective Microsoft DP-600 Exam Preparation In a Short Time □ Enter □ www.pdfvce.com □ and search for ➡ DP-600 □□□ to download for free □DP-600 Latest Exam Book
- DP-600 Exam Dumps.zip □ Top DP-600 Exam Dumps □ DP-600 Interactive Course □ Search for > DP-600 □ and easily obtain a free download on ▶ www.prepawaypdf.com ◀ □Top DP-600 Exam Dumps
- Free DP-600 Pdf Guide: Implementing Analytics Solutions Using Microsoft Fabric - Latest Microsoft DP-600 Free Study Material □ Download “ DP-600 ” for free by simply entering ➡ www.pdfvce.com □ website □DP-600 Reliable Test Question
- Free PDF Quiz DP-600 - Implementing Analytics Solutions Using Microsoft Fabric Useful Free Pdf Guide □ Copy URL □ www.vce4dumps.com □ open and search for ➡ DP-600 □ to download for free □DP-600 Exam Questions And Answers
- DP-600 Exam Blueprint □ DP-600 Lead2pass □ Reliable DP-600 Test Questions □ Search for { DP-600 } on ➡ www.pdfvce.com □ immediately to obtain a free download □New DP-600 Exam Testking
- Free DP-600 Pdf Guide Exam 100% Pass | DP-600: Implementing Analytics Solutions Using Microsoft Fabric □ The page for free download of 「 DP-600 」 on { www.validtorrent.com } will open immediately ☼DP-600 Exam Learning
- Effective Microsoft DP-600 Exam Preparation In a Short Time □ Go to website ➡ www.pdfvce.com □ open and search for □ DP-600 □ to download for free □Test DP-600 Practice
- Free DP-600 Pdf Guide Will Be Your Wisest Choice to Pass Implementing Analytics Solutions Using Microsoft Fabric □ Open website ✓ www.exam4labs.com □✓□ and search for ➡ DP-600 □□□ for free download □Test DP-600 Practice
- finniandoqb727233.dailyblogzz.com, mariahqoxp995051.blogchaat.com, anitavnpu170403.thebloggers.com, socialtechnet.com, listbell.com, geraldmoit024330.blogginaway.com, mariahikls913179.blogripley.com, andrewfgmx931930.p2blogs.com, kallunyjkj085065.blogrenanda.com, phase2directory.com, Disposable vapes

What's more, part of that It-Tests DP-600 dumps now are free: <https://drive.google.com/open?id=1L-FqaDKnHiqXSe2h94UhVW4qzzWPWjJp>