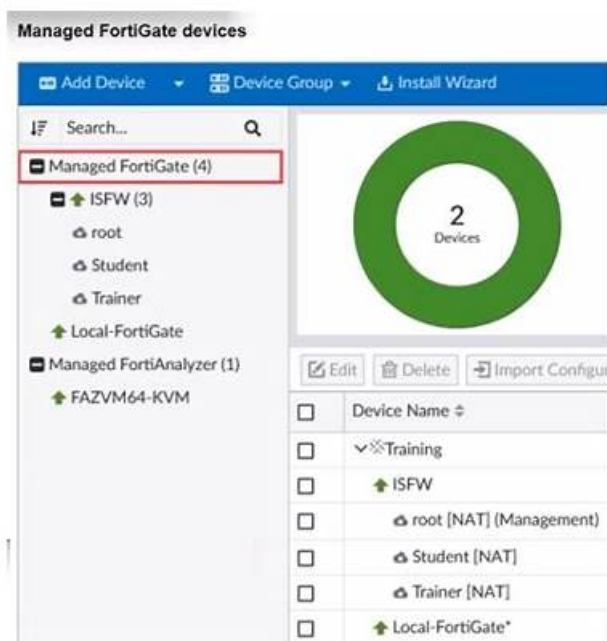
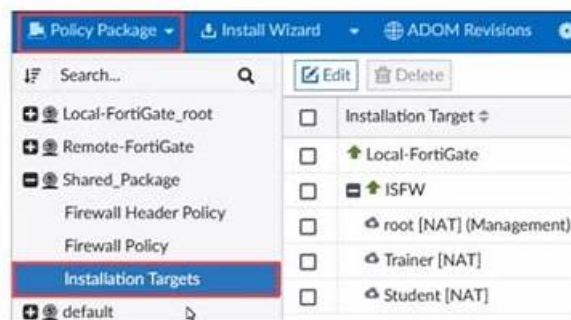


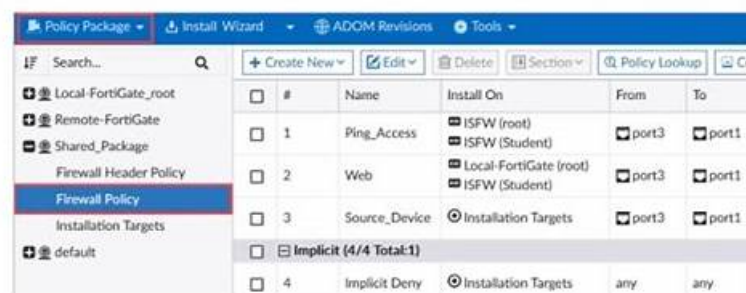
Fortinet FCP_FMG_AD-7.4 Questions: Turn Your Exam Fear into Confidence [2026]



FortiManager policy package



FortiManager policy package



P.S. Free 2026 Fortinet FCP_FMG_AD-7.4 dumps are available on Google Drive shared by ValidExam
<https://drive.google.com/open?id=102jZNumQ6gi4CvDzP2-O88UcD1uCW1Mi>

Our website platform has no viruses and you can download FCP_FMG_AD-7.4 test guide at ease. If you encounter difficulties in installation or use of FCP_FMG_AD-7.4 exam torrent, we will provide you with remote assistance from a dedicated expert to help you and provide 365 days of free updates that you do not have to worry about what you missed. Whether you are a worker or student, you will save much time to do something whatever you want. It only needs 5-10 minutes after you pay for our FCP_FMG_AD-7.4 learn torrent that you can learn it to prepare for your exam. Actually, if you can guarantee that your effective learning time with FCP_FMG_AD-7.4 test preps are up to 20-30 hours, you can pass the exam.

Fortinet FCP_FMG_AD-7.4 Exam Syllabus Topics:

| Topic | Details |
|---------|--|
| Topic 1 | <ul style="list-style-type: none">• Device Manager: In this domain, the focus is on how to register devices within ADOMs, implement configuration changes using scripts, and troubleshoot using the revision history. |
| Topic 2 | <ul style="list-style-type: none">• Policy and Objects: This section deals with how to manage policies and objects, oversee ADOM revisions, configure workspace mode, and conduct policy imports and installations. |
| Topic 3 | <ul style="list-style-type: none">• Administration: This section covers how to understand FortiManager capabilities, perform initial configurations, and set up administrative domains (ADOMs). |
| Topic 4 | <ul style="list-style-type: none">• Troubleshooting: This section covers how to familiarize with FortiManager deployment scenarios and troubleshoot issues related to imports, installations, device-level, ADOM-level, and system-level concerns. |
| Topic 5 | <ul style="list-style-type: none">• Advanced Configuration: This domain explains FortiManager's high availability (HA), configures FortiGuard services and works with the global database ADOM. |

>> FCP_FMG_AD-7.4 Exam Book <<

Latest Test FCP_FMG_AD-7.4 Experience & FCP_FMG_AD-7.4 Official Cert Guide

FCP_FMG_AD-7.4 practice exam will provide you with wholehearted service throughout your entire learning process. This means that unlike other products, the end of your payment means the end of the entire transaction our Fortinet FCP_FMG_AD-7.4 Learning Materials will provide you with perfect services until you have successfully passed the FCP - FortiManager 7.4 Administrator FCP_FMG_AD-7.4 exam.

Fortinet FCP - FortiManager 7.4 Administrator Sample Questions (Q58-Q63):

NEW QUESTION # 58

Refer to the exhibit.

Create New Script

Script Name

Routing

Comments

Type

CLI Script

Run script on

Device Database

Script details

Search...

1 config router prefix-list

2 edit public

3 config rule

4 edit 1

5 set prefix 0.0.0.0/0

6 set action permit

7 next

8 edit 2

9 set prefix 8.8.8.8/32

10 set action deny

11 end

Revert All Changes

Advanced Device Filters >

Which two results occur if the script is run using the Device Database option? (Choose two.)

- A. The successful execution of a script on the Device Database creates a new revision history.
- B. You must install these changes on a managed device using the Install Wizard.
- C. The device Config Status is tagged as Modified.
- D. The script history shows successful installation of the script on the remote FortiGate device.

Answer: B,C

NEW QUESTION # 59

Refer to the exhibit.

Import Device - Local-FortiGate - Interface Mapping & Policy (2/5)

Create a new policy package for import.

Policy Package Name: Local-FortiGate

Folder: root

Policy Selection: Import All (3) **Select Policies to Import**

Firewall Policy (2) **x**

Select

Object Selection: Import only policy dependent objects **Import all objects**

An administrator is importing a new device into FortiManager and has selected the options shown in the exhibit. What will happen if the administrator makes changes and then installs the modified policy package on this managed FortiGate?

- A. Policies not imported are deleted on the managed FortiGate during the installation.
- B. Policies not imported are marked as modified for future import attempts.
- C. Policies not imported prompt a confirmation before being deleted.
- D. Policies not imported remain untouched on the managed FortiGate.

Answer: A

Explanation:

When importing a device into FortiManager, if certain policies are not imported and then changes are made to the imported policies, the next time the policy package is installed on the managed FortiGate, any policies that were not imported will be removed from the FortiGate. FortiManager expects the managed FortiGate to match the imported policy package exactly, so any discrepancies (such as unimported policies) will be removed to ensure synchronization.

NEW QUESTION # 60

Refer to the exhibit.

FortiManager log

-----Executing time: -----

Starting log (Run on device)

Local-FortiGate \$ config user local
Local-FortiGate (local) \$ edit student
Local-FortiGate (student) \$ set type ldap
Local-FortiGate (student) \$ set status enable
Local-FortiGate (student) \$ next

Attribute 'ldap-server' MUST be set.

Command fail. Return code 1

Local-FortiGate (local) \$ end

Local-FortiGate \$ config firewall policy

Local-FortiGate (policy) \$ edit 2

Local-FortiGate (2) \$ set srcintf port3

Local-FortiGate (2) \$ set dstintf port1

Local-FortiGate (2) \$ set srcaddr all

Local-FortiGate (2) \$ set dstaddr all

Local-FortiGate (2) \$ set action accept

Local-FortiGate (2) \$ set schedule always

Local-FortiGate (2) \$ set service ALL

Local-FortiGate (2) \$ set users student

entry not found in datasource

value parse error before 'student'

Command fail. Return code -3

Local-FortiGate (2) \$ set nat enable

Local-FortiGate (2) \$ next

Local-FortiGate (policy) \$ end

Local-FortiGate \$

-----End of Log-----

What can you conclude from the failed installation log shown in the exhibit?

- A. Policy ID 2 is installed without the remote user student.
- B. Policy ID 2 will not be installed.
- C. Policy ID 2 is installed in the disabled state.
- D. Policy ID 2 is installed without a source address.

Answer: A

Explanation:

From the log provided in the exhibit, several conclusions can be drawn regarding the installation of Policy ID 2:

* The installation process fails when attempting to set the LDAP user "student". The log shows:

* "Attribute 'ldap-server' MUST be set.": This error indicates that when setting up the LDAP user configuration, a mandatory field (ldap-server) is missing. As a result, the configuration could not be completed for the user.

* "entry not found in datasource" and "value parse error before 'student'": These errors confirm that the user "student" could not be properly added due to a configuration issue (such as the missing LDAP server).

Because of these errors, while other configuration elements (such as source and destination interfaces, actions, and services) are properly set, the user configuration for "student" is not applied.

Evaluation of the answer options:

* A. Policy ID 2 is installed in the disabled state.

* This is false. There is no indication in the log that Policy ID 2 is disabled.

* B. Policy ID 2 is installed without the remote user student.

* This is true. Due to the failure in setting the "student" user (as indicated by the errors), the policy will be installed without that user being properly configured.

* C. Policy ID 2 will not be installed.

* This is false. The policy is installed, but the user configuration failed. The rest of the policy configuration appears to have proceeded without critical errors that would prevent the installation.

* D. Policy ID 2 is installed without a source address.

* This is false. The log shows that the source address is properly set to "all" (set srcaddr all), so this is not the cause of the issue.

From the log exhibit, we see errors related to the "ldap-server" attribute not being set and an error with the entry "student" not being found in the datasource. This indicates that Policy ID 2 will not be installed due to missing or incorrect data required for successful installation. The "Command fail. Return code -3" confirms the installation failure, so the correct answer is C.

Options A, B, and D are incorrect because:

* A suggests the policy is installed in a disabled state, which isn't supported by the log.

* B and D suggest partial installation, but the error messages indicate a complete failure to install Policy ID 2.

FortiManager References:

* Refer to FortiManager 7.4 Troubleshooting Guide: Common Errors and Log Interpretation.

NEW QUESTION # 61

Exhibit.



```
FortiManager # config system global
(global)# set workspace-mode normal
(global)# end
FortiManager #
```

Given the configuration shown in the exhibit, what are two results from this configuration? (Choose two.)

- A. Concurrent read-write access to an ADOM is disabled.
- B. You can validate administrator login attempts through external servers.
- C. The same administrator can lock more than one ADOM at the same time.
- D. Two or more administrators can make configuration changes at the same time, in the same ADOM.

Answer: A,C

NEW QUESTION # 62

Refer to the exhibit.

Category

Name: LOCAL_SUBNET

Color:

Type: Subnet

IP/Netmask: 192.168.1.0/255.255.255.0

Interface: any

Static Route Configuration: ☐

Comments

Add To Groups

Advanced Options >

Per-Device Mapping ▾

| <input type="checkbox"/> Mapped Device # | Details # |
|--|---|
| <input checked="" type="checkbox"/> Local-FortiGate [root] | IP/Netmask: 192.168.1.0.255.255.255.240 |

An administrator has created a firewall address object that is used in multiple policy packages for multiple FortiGate devices in an ADOM.

After the installation operation is performed, which IP/netmask is shown on FortiManager for this firewall address object for devices without a Per-Device Mapping set?

- A. 192.168.1.0/28
- B. 192.168.1.0/24
- C. FortiManager replaces the address object to none.
- D. FortiManager generates an error for each FortiGate without a per-device mapping defined for that object.

Answer: A

NEW QUESTION # 63

.....

If you want to through the Fortinet FCP_FMG_AD-7.4 certification exam to make a stronger position in today's competitive IT industry, then you need the strong expertise knowledge and the accumulated efforts. And pass the Fortinet FCP_FMG_AD-7.4 exam is not easy. Perhaps through Fortinet FCP_FMG_AD-7.4 exam you can promote yourself to the IT industry. But it is not necessary to spend a lot of time and effort to learn the expertise. You can choose ValidExam's Fortinet FCP_FMG_AD-7.4 Exam Training materials. This is training product that specifically made for IT exam. With it you can pass the difficult Fortinet FCP_FMG_AD-7.4 exam effortlessly.

Latest Test FCP_FMG_AD-7.4 Experience: https://www.validexam.com/FCP_FMG_AD-7.4-latest-dumps.html

- FCP_FMG_AD-7.4 valid prep cram - FCP_FMG_AD-7.4 sure pass download ☐ Search on ➡ www.prep4sures.top ☐ ☐ ☐ for > FCP_FMG_AD-7.4 < to obtain exam materials for free download ☐ Valid FCP_FMG_AD-7.4 Test Pass4sure
- Pass FCP_FMG_AD-7.4 Exam with Fortinet's Exam Questions and Achieve 100% Success on Your First Try ☐ Immediately open ➡ www.pdfvce.com ☐ ☐ ☐ and search for 「 FCP_FMG_AD-7.4 」 to obtain a free download ☐ Real FCP_FMG_AD-7.4 Dumps
- FCP_FMG_AD-7.4 Online Version ☐ Test FCP_FMG_AD-7.4 King ☐ FCP_FMG_AD-7.4 Valid Exam Objectives ☐ Easily obtain free download of ➡ FCP_FMG_AD-7.4 ☐ by searching on ☐ www.examdisscuss.com ☐ ☐ Reliable FCP_FMG_AD-7.4 Exam Labs
- Interactive FCP_FMG_AD-7.4 Course ☐ FCP_FMG_AD-7.4 Pass4sure ☐ Real FCP_FMG_AD-7.4 Dumps ☐ Open website 【 www.pdfvce.com 】 and search for ➡ FCP_FMG_AD-7.4 ☐ for free download ☐ Test FCP_FMG_AD-7.4 King
- Valid FCP_FMG_AD-7.4 Test Online ☐ Test FCP_FMG_AD-7.4 King ☐ FCP_FMG_AD-7.4 Related Exams ☐ Simply search for ☐ FCP_FMG_AD-7.4 ☐ for free download on ➡ www.pdfdumps.com ☐ ☐ FCP_FMG_AD-7.4 Test Study Guide
- FCP_FMG_AD-7.4 Related Exams ☐ FCP_FMG_AD-7.4 Pass Guaranteed ☐ FCP_FMG_AD-7.4 Valid Exam Objectives ☐ Search for { FCP_FMG_AD-7.4 } and download it for free on ➡ www.pdfvce.com ☐ website ☐ FCP_FMG_AD-7.4 Test Study Guide
- Test FCP_FMG_AD-7.4 King ☐ Vce FCP_FMG_AD-7.4 Test Simulator ☐ FCP_FMG_AD-7.4 Latest Test Prep ☐ ☐ Open 「 www.prep4away.com 」 and search for > FCP_FMG_AD-7.4 < to download exam materials for free ☐ Real

FCP_FMG_AD-7.4 Dumps

- Pdfvce Fortinet FCP_FMG_AD-7.4 exam practice questions and answers □ Search for (FCP_FMG_AD-7.4) on ⇒ www.pdfvce.com ⇐ immediately to obtain a free download □ Reliable FCP_FMG_AD-7.4 Exam Labs
- FCP_FMG_AD-7.4 Test Study Guide □ Reliable FCP_FMG_AD-7.4 Exam Labs 罫 FCP_FMG_AD-7.4 Pass Guaranteed □ Enter ➡ www.prep4sures.top □□□ and search for □ FCP_FMG_AD-7.4 □ to download for free ⇨ FCP_FMG_AD-7.4 Pass4sure
- FCP_FMG_AD-7.4 Torrent Pdf- FCP_FMG_AD-7.4 Latest Vce - FCP_FMG_AD-7.4 Valid Study Material □ Search for ➡ FCP_FMG_AD-7.4 □ and download it for free on □ www.pdfvce.com □ website ♡ FCP_FMG_AD-7.4 Valid Exam Objectives
- Pass FCP_FMG_AD-7.4 Exam with Fortinet's Exam Questions and Achieve 100% Success on Your First Try ♣ Download ➡ FCP_FMG_AD-7.4 □ for free by simply entering “ www.prepawaypdf.com ” website □ Real FCP_FMG_AD-7.4 Dumps
- penstribeachademy.com, shortcourses.russellcollege.edu.au, www.stes.tyc.edu.tw, www.stes.tyc.edu.tw, lms.ait.edu.za, study.stcs.edu.np, ncon.edu.sa, github.com, gesapuntesacademia.es, www.stes.tyc.edu.tw, Disposable vapes

BONUS!!! Download part of ValidExam FCP_FMG_AD-7.4 dumps for free: <https://drive.google.com/open?id=102jZNumQ6gi4CvDzP2-O88UcD1uCW1Mi>